

Wilo-Jet-WJ



de Einbau- und Betriebsanleitung
en Installation and operating instructions
fr Notice de montage et de mise en service
nl Inbouw- en bedieningsvoorschriften
es Instrucciones de instalación y funcionamiento

it Istruzioni di montaggio, uso e manutenzione
cs Návod k montáži a obsluze
ru Инструкция по монтажу и эксплуатации
el Οδηγίες εγκατάστασης και λειτουργίας
tr Montaj ve kullanma kılavuzu

Fig. 1

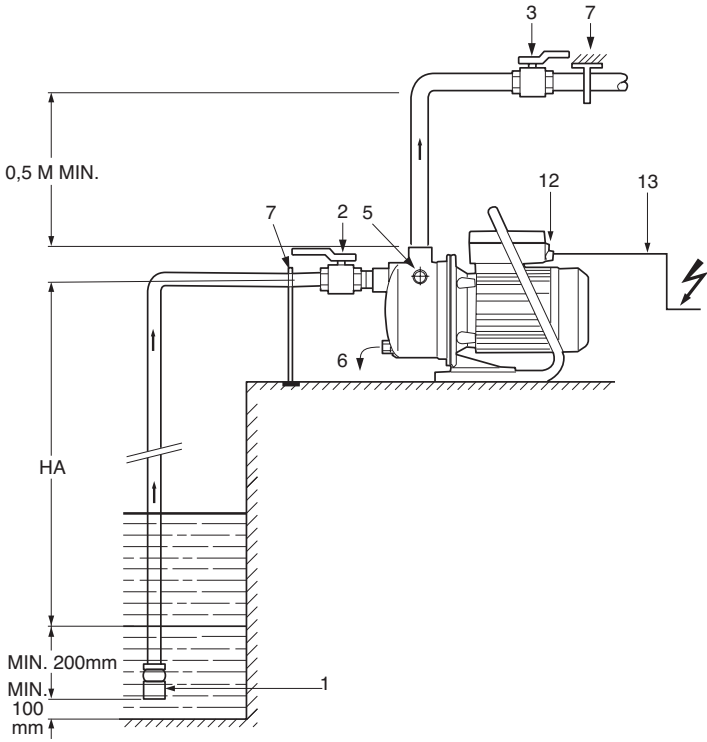


Fig. 2

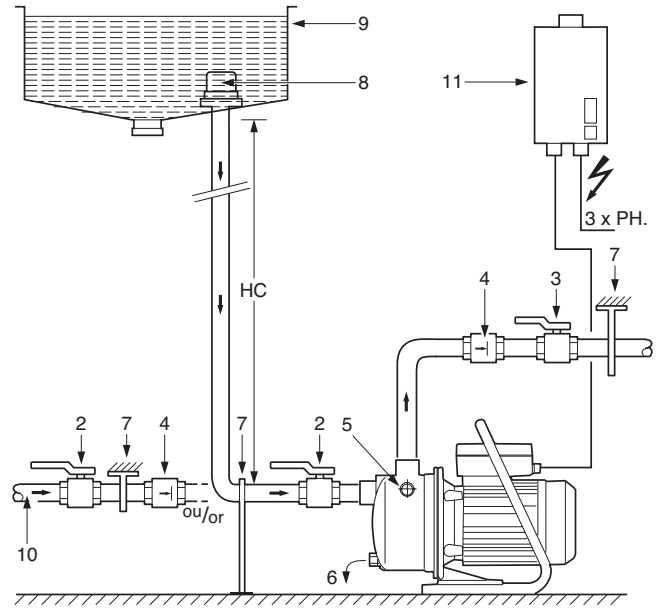
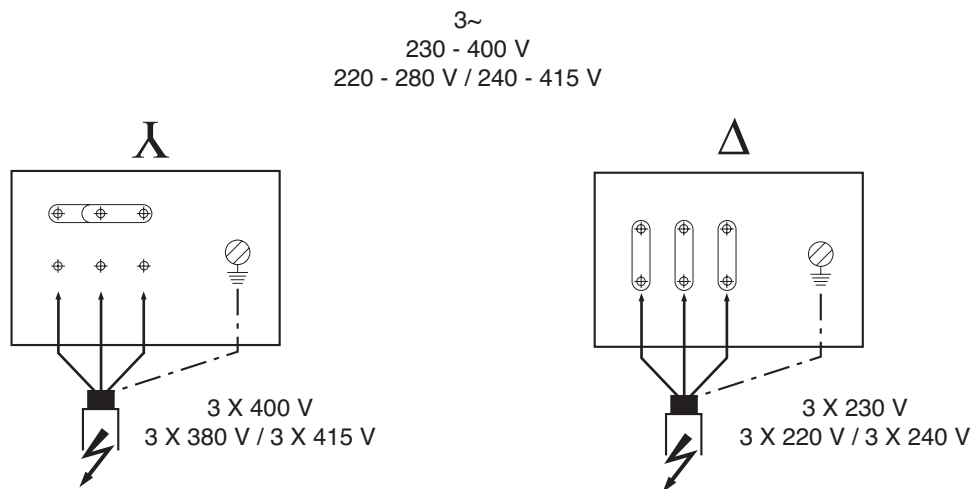


Fig. 3



1. General

Installation and service by qualified personnel only

1.1 Application

With the Jet-pump WILO offers an inexpensive water supply unit in the fields of home, hobby and garden. The pumps are suitable for:

- watering and sprinkling from ponds, creeks and bores,
- draining of tanks and containers,
- dewatering of flooded basements.

The pump works self-priming (e.g. from bores) or with flooded suction (e.g. from open tanks).

It must not be connected directly to public water supply systems.

1.2 Product Information

1.2.1 Technical Data

Suitable media: Water without solid particles, domestic, cold, cooling and rain water. Use of other media requires WILO's consent.

- Temperature min./max. + 5 °C to + 35 °C
- Environment temperature min./max. 0...40 °C
- Maximum suction lift 8 m
- Single-phase (EM): 2850 l/min (50 Hz)
- Three-phase (DM): 3450 l/min (60 Hz)
- Size suction/discharge ports: G1"
- Max. working pressure 6 bar
- Insulation class 130
- Protection index IP 44
- Electrical connection

1 ~ 230 V ±6%, 50 Hz /	
3 ~ 400 V ±6%, 50 Hz /	
1 ~ 220-240 V ±6%, 60 Hz	
3 ~ 220-254/380-440 V	
±6%, 60 Hz	

When ordering spare parts, please state all name plate data.

2. Safety

These instructions contain basic rules on safety which must be strictly adhered to. It is therefore imperative for the Installer and the Operator to carefully read these instructions prior to installation and commissioning. Please observe, not only the safety directions under the main heading Safety Rules, but also those added and specially marked under the ensuing headers.

2.1 Safety marks contained in these Instructions



Danger from general causes. Safety references contained which, if not complied with, may cause death or severe physical injury to persons.



Danger from electrical causes



ATTENTION! Safety references which, if not complied with, may result in damage to the plant or its function.

2.2 Personnel qualification

Only suitably qualified personnel may work on this equipment.

2.3 Dangers from non-observance of safety hints

Non-observance of safety reference may cause bodily harm to persons or damage to the plant.

Failure to comply with safety reference could invalidate warranty and/or damage claims.

In detail, non-compliance may, for example, cause the following dangerous possibilities:

- Failure of vital plant functions or damage to the pump,
- Causing personal injury due to electrical and/or mechanical causes.

2.4 Safety reference for the Operator

Local regulations for the prevention of accidents must be observed.

This appliance can be used by children aged from 8 years and above and persons with reduced physical, sensory or mental capabilities or lack of experience and knowledge if they have been given supervision or instruction concerning use of the appliance in a safe way and understand the hazards involved. Children shall not play with the appliance. Cleaning and user maintenance shall not be made by children without supervision. Danger from electrical energy must be excluded (conforming to local or general regulations such as IEG, 881, VDE etc.).

2.5 Safety reference for Inspections and Installation work

It is the Operator's responsibility to ensure that inspections and installation work are carried out by authorized and qualified personnel only, having themselves made fully conversant with these instructions.

Work must principally be carried out only with the plant switched off and at complete standstill.

2.6 Arbitrary alterations and spare part procurement

Any alterations to the plant are only permitted in agreement with the manufacturers. Original spare parts and authorized accessories serve safety and reliability. The use of unauthorized parts could invalidate any claims for consequential damages.

2.7 Abnormal Operating Conditions

Operational safety of the plant is only ensured if used in accordance with Chapter 1 of these instructions. The limits stated there must not be exceeded under any circumstances.

3. Transport and Storage



ATTENTION! The pump must not be subjected to temperatures outside the limits of 0 °C to + 40 °C.

If the equipment delivered is to be installed at some later time, store it in a dry place and protect it from impacts and all external influences (moisture, frost, etc.).

Handle the pump carefully so as not to alter the geometry and the alignment of the hydraulic unit.

Never suspend the pump from the power cord.

4. Description of Product and Accessories

All WJ-series pumps are self-priming. All parts in contact with the medium being handled are of corrosion-resistant steel. Single-phase motors have built-in thermal contacts, switching off the

motor on overload and on again after a cooling down period. A mechanical seal separates the pump housing from the motor.



ATTENTION! The pump must not run dry.

Warranty does not cover damages to the pump due to dryrunning.

4.1 Description of WJ-Series Pump

Series WJ pumps are portable for mobile application. Single phase pumps have a carrying grip and are supplied complete with power cable, plug and ON/OFF switch.

Standard-Installations

- Figure 1: Pump in suction
- Figure 2: Pump under pressure on storage tank or on town water supply with dry-running protection system.

Legend for Installation samples (see figures 1 and 2):

- Pos. 1 Strainer-foot valve
(maximum passing section 1 mm)
- Pos. 2 Pump suction valve
- Pos. 3 Pump discharge valve
- Pos. 4 Non-return valve
- Pos. 5 Filling plug
- Pos. 6 Draining plug
- Pos. 7 Pipe supports
- Pos. 8 Strainer
- Pos. 9 Storage tank
- Pos. 10 Town water supply
- Pos. 11 3~ motor protection relay
- Pos. 12 OFF/ON switch for single phase motor
(red indicator light)
- Pos. 13 Power plug (1~ -Motor)

4.2 Scope of supply

- Jet Pump (WJ)
- Installation and Operation instructions.

4.3 Accessories

- Suction kit,
- Isolating valves,
- Non-return valves,
- Strainer-foot valve,
- Bladder tank,
- Vibrationless sleeves,
- Motor protection relay,
- Dry running protection (ME kit),
- On-off control device...

The use of new accessories is recommended.

5. Sitting/Installation

5.1 Installation

The pump must be operated in strict compliance with local water supply regulations.

Requirements on installation location:

- easy to reach
- well vented, dry and frostfree
- Installation on a concrete socket or directly on a smooth and horizontal floor, by use of 2 screws $\varnothing 8\text{mm}$.

It is the Operators responsibility to take all preventive measures (e. g. provision of alarm systems, standby pump, etc.) to avoid consequential damages such as flooding due to pump failure.

- Suction and discharge piping to be provided on

site by others.

- When using solid pipe connections the pump must be firmly fixed to the floor.
- If not firmly fixed, flexible connectors must at least be used for suction and discharge ports.
- The suction pipe must be fully airtight and be installed free of stress, steadily rising towards the pump.
- Suction lifts above 5 metres require a suction pipe size of not less than 1^{1/4}".
- Discharge pipe connections must be free of stress on the pump.



ATTENTION! In order to ensure proper operation a static discharge head of 30 cm is required; the discharge pipe must thus be installed with a rise of at least 30 cm.

- A foot valve is required at the end of the suction line. It must be located not less than 30 cm below the lowest water level. Recommended is the use of a suction hose set (optional extra) consisting of suction hose, suction strainer and foot valve.

5.2 Electrical connection



ATTENTION! Connections and checks should be carried out by a qualified electrician, in compliance with current local standards.

The power supply of the pump must include a circuit having a residual current difference device (earth fault breaker) acting at no more than 30 mA.

In case of cord damaged, make it replace by a qualified electrician.

- See name plate of the motor for electrical characteristics (frequency, voltage, nominal current).
- Means for disconnection must be incorporated in the fixed wiring in accordance with the wiring rules
- Single-phase motor
The single-phase motors have an integrated thermal protection. If an extension is added to the cord supplied with the motor, it must comply with the applicable standards: 3 conductors (2 phases + earth).
- Three-phase motors
The electrical connection must be as shown by the diagram inside the cover of the terminal box (see Fig. 3). Use an electrical cable conforming with the standard in force (H07 RNF 4G1mm² external diameter: 10mm max): 4 conductors (3 phases + earth).
- The motors must be protected by a circuit-breaker set to the current mentioned on the name plate of the motor. Provide a fuse disconnecting switch (type aM) to protect the mains supply.



ATTENTION! DO NOT FORGET TO CONNECT THE EARTH.

A connection error would damage the motor. The power cable must never touch the pipe or the pump ; make sure that it is sheltered from any humidity.

6. Commissioning

- Check to ensure that a sufficiently high water level is available in the open break tank or bore. Dry-running of the pump must be prevented as it will lead to destruction of the mechanical seal.
- Fill pump and suction line via the fill plug. Only a filled pump has self-priming capacity.
- Open discharge isolating valve(s) to allow free air evacuation from the suction pipe.
- Three-phase motors require a rotation check: Briefly switch on the pump and check whether actual direction of rotation corresponds with the arrow on the fan hood of the motor. If necessary, change any two supply phases.
- Never use the power supply cable for lifting, transporting or fixing of the pump.
- The pump must not be subjected to direct water spray.

7. Maintenance



Isolate from power supply before checking the pump!

In principle, damage to the connecting cable should only be repaired by a qualified electrician.

To ensure highest operational safety and reliability at lowest possible cost the following routine checks are recommended:

- Check on diaphragm vessel pressure (at least 1.4 bar on standard settings of pressure switch).
- Check pump for leaks.

On danger of freezing it is necessary to completely drain the pump using the drain plug at the bottom of the pump housing.

For prolonged standdown periods (e. g. winter shutdown) the pump needs thorough scouring, complete draining and dry storage.

On re-commissioning check for free rotation by briefly switching-on the pump. Then re-fill with water.

8. Faults, Causes and Remedies

Défauts	Causes	Remèdes
Pump does not run	Interruption of the current, short circuit, Insulation fault in the motor coil	Check power supply, Call on expert to check cable and motor
	Pump is blocked due to foreign matters (1)	<ul style="list-style-type: none"> – Switch off the pump voltage and secure against reoperation. – Close the shut-off fittings at the back and front of the pump. – Remove foreign bodies from the pump
	Protective motor switch activated (1 ~ -Motor)	Let the pump/motor cooling
Motor overheats	Too low voltage	Check voltage on terminals of the motor. It should be within $\pm 6\%$ (50 Hz), resp. $\pm 6\%$ (60 Hz) of the rated voltage
	Pump is blocked due to foreign matters	(see 1)
	Ambient temperature above $+40\text{ °C}$	The motor is aimed at operating at a maximum ambient temperature of $+40\text{ °C}$
	Altitude $> 1000\text{ m}$	Motor is planned to operate at an altitude $\leq 1000\text{ m}$
Thermal relay	Value of the thermal relay (3 ~ -Motor) is too low	Check the current with an ammeter or put the value switches off of the current rating mentioned on the motor data plate
	Voltage is too low	Check the adequate cross-section of the electrical cable conductors
	A phase is cut	Check it and change the electrical cable if necessary
	Thermal relay of the circuit-breaker is defective	replace it
	Motor is defective	replace it
Pump runs, but no delivery or it transports too little	Pump is blocked due to foreign matters	(see 1)
	Pump is empty	Fill the pump
	Air in suction pipes	Check tightness of the whole pipe up to the pump and make it tight
	Suction pipe obstructed	Clean all the pipes
	Wrong rotating direction(3 ~ -Motor)	Cross two phase wires
Pump vibrates	Loose on its foundation	Check and completely tighten the nuts of the stud bolts
	Pump is blocked due to foreign matters	(see 1)
	Bad electrical connection	Check the connections to the pump motor

A blockage of the pump can in most cases be remedied by removing the suction connection and scouring the pump backwards under pressure. Switch-on pump several times for 2 secs during scouring. If the fault cannot be located or rectified, please contact your nearest WIL0 representative.

Wilo – International (Subsidiaries)

Argentina

WILO SALMSON
Argentina S.A.
C1295ABI Ciudad
Autónoma de Buenos Aires
T + 54 11 4361 5929
info@salmson.com.ar

Australia

WILO Australia Pty Limited
Murrarie, Queensland,
4172
T +61 7 3907 6900
chris.dayton@wilo.com.au

Austria

WILO Pumpen
Österreich GmbH
2351 Wiener Neudorf
T +43 507 507-0
office@wilo.at

Azerbaijan

WILO Caspian LLC
1014 Baku
T +994 12 5962372
info@wilo.az

Belarus

WILO Bel OOO
220035 Minsk
T +375 17 2535363
wilo@wilo.by

Belgium

WILO SA/NV
1083 Ganshoren
T +32 2 4823333
info@wilo.be

Bulgaria

WILO Bulgaria Ltd.
1125 Sofia
T +359 2 9701970
info@wilo.bg

Brazil

WILO Brasil Ltda
Jundiaí – São Paulo – Brasil
ZIP Code: 13.213-105
T + 55 11 2923 (WILO) 9456
wilo@wilo-brasil.com.br

Canada

WILO Canada Inc.
Calgary, Alberta T2A 5L4
T +1 403 2769456
bill.lowe@wilo-na.com

China

WILO China Ltd.
101300 Beijing
T +86 10 58041888
wilobj@wilo.com.cn

Croatia

Wilo Hrvatska d.o.o.
10430 Samobor
T +38 51 3430914
wilo-hrvatska@wilo.hr

Czech Republic

WILO CS, s.r.o.
25101 Cestlice
T +420 234 098711
info@wilo.cz

Denmark

WILO Danmark A/S
2690 Karlslunde
T +45 70 253312
wilo@wilo.dk

Estonia

WILO Eesti OÜ
12618 Tallinn
T +372 6 509780
info@wilo.ee

Finland

WILO Finland OY
02330 Espoo
T +358 207401540
wilo@wilo.fi

France

WILO S.A.S.
78390 Bois d'Arcy
T +33 1 30050930
info@wilo.fr

Great Britain

WILO (U.K.) Ltd.
Burton Upon Trent
DE14 2WJ
T +44 1283 523000
sales@wilo.co.uk

Greece

WILO Hellas AG
14569 Anixi (Attika)
T +302 10 6248300
wilo.info@wilo.gr

Hungary

WILO Magyarország Kft
2045 Törökbálint
(Budapest)
T +36 23 889500
wilo@wilo.hu

India

WILO India Mather and Platt
Pumps Ltd.
Pune 411019
T +91 20 27442100
services@matherplatt.com

Indonesia

WILO Pumps Indonesia
Jakarta Selatan 12140
T +62 21 7247676
citrawilo@cbn.net.id

Ireland

WILO Ireland
Limerick
T +353 61 227566
sales@wilo.ie

Italy

WILO Italia s.r.l.
20068 Peschiera Borromeo
(Milano)
T +39 25538351
wilo.italia@wilo.it

Kazakhstan

WILO Central Asia
050002 Almaty
T +7 727 2785961
info@wilo.kz

Korea

WILO Pumps Ltd.
618-220 Gangseo, Busan
T +82 51 950 8000
wilo@wilo.co.kr

Latvia

WILO Baltic SIA
1019 Riga
T +371 6714-5229
info@wilo.lv

Lebanon

WILO LEBANON SARL
Jdeideh 1202 2030
Lebanon
T +961 1 888910
info@wilo.com.lb

Lithuania

WILO Lietuva UAB
03202 Vilnius
T +370 5 2136495
mail@wilo.lt

Morocco

WILO MAROC SARL
20600 CASABLANCA
T + 212 (0) 5 22 66 09
24/28
contact@wilo.ma

The Netherlands

WILO Nederland b.v.
1551 NA Westzaan
T +31 88 9456 000
info@wilo.nl

Norway

WILO Norge AS
0975 Oslo
T +47 22 804570
wilo@wilo.no

Poland

WILO Polska Sp. z o.o.
05-506 Lesznowola
T +48 22 7026161
wilo@wilo.pl

Portugal

Bombas Wilo-Salmson
Portugal Lda.
4050-040 Porto
T +351 22 2080350
bombas@wilo.pt

Romania

WILO Romania s.r.l.
077040 Com. Chiajna
Jud. Ilfov
T +40 21 3170164
wilo@wilo.ro

Russia

WILO Rus ooo
123592 Moscow
T +7 495 7810690
wilo@wilo.ru

Saudi Arabia

WILO ME – Riyadh
Riyadh 11465
T +966 1 4624430
wshoula@wataniaind.com

Serbia and Montenegro

WILO Beograd d.o.o.
11000 Beograd
T +381 11 2851278
office@wilo.rs

Slovakia

WILO CS s.r.o., org. Zložka
83106 Bratislava
T +421 2 33014511
info@wilo.sk

Slovenia

WILO Adriatic d.o.o.
1000 Ljubljana
T +386 1 5838130
wilo.adriatic@wilo.si

South Africa

Salmson South Africa
1610 Edenvale
T +27 11 6082780
errol.cornelius@
salmson.co.za

Spain

WILO Ibérica S.A.
28806 Alcalá de Henares
(Madrid)
T +34 91 8797100
wilo.iberica@wilo.es

Sweden

WILO Sverige AB
35246 Växjö
T +46 470 727600
wilo@wilo.se

Switzerland

EMB Pumpen AG
4310 Rheinfelden
T +41 61 83680-20
info@emb-pumpen.ch

Taiwan

WILO Taiwan Company Ltd.
Sanhong Dist., New Taipei
City 24159
T +886 2 2999 8676
nelson.wu@wilo.com.tw

Turkey

WILO Pompa Sistemleri
San. ve Tic. A.Ş.,
34956 Istanbul
T +90 216 2509400
wilo@wilo.com.tr

Ukraine

WILO Ukraina t.o.w.
01033 Kiev
T +38 044 2011870
wilo@wilo.ua

United Arab Emirates

WILO Middle East FZE
Jebel Ali Free Zone–South
PO Box 262720 Dubai
T +971 4 880 91 77
info@wilo.ae

USA

WILO USA LLC
Rosemont, IL 60018
T +1 866 945 6872
info@wilo-usa.com

Vietnam

WILO Vietnam Co Ltd.
Ho Chi Minh City, Vietnam
T +84 8 38109975
nkminh@wilo.vn

wilo

Pioneering for You

WILO SE
Nortkirchenstraße 100
D-44263 Dortmund
Germany
T +49(0)231 4102-0
F +49(0)231 4102-7363
wilo@wilo.com
www.wilo.com