



Wilo-S1R-h digital (Star-Z20/...-Z25/...)

- D** Einbau- und Betriebsanleitung
- GB** Installation and operating instructions
- F** Notice de montage et de mise en service
- I** Istruzioni di montaggio, uso e manutenzione

D	Einbau- und Betriebsanleitung	3
GB	Installation and operating instructions	14
F	Notice de montage et de mise en service	25
I	Istruzioni di montaggio, uso e manutenzione	36

1 General

About this document

The language of the original operating instructions is German. All other languages of these instructions are translations of the original operating instructions.

These installation and operating instructions are an integral part of the product. They must be kept readily available at the place where the product is installed. Strict adherence to these instructions is a precondition for the proper use and correct operation of the product.

These installation and operating instructions correspond to the relevant version of the product and the underlying safety standards valid at the time of going to print.

EC declaration of conformity

A copy of the EC declaration of conformity is a component of these operating instructions.

If a technical modification is made on the designs named there without our agreement, this declaration loses its validity.

2 Safety

The safety instructions of the installation and operating instructions of the pump must be observed for all work on the SIR-h.

- Electrical devices may be connected and installed only by an electrician.
- Tampering with and modifying the device will void the warranty.
- Observe national regulations and the relevant safety regulations for accident prevention.
- Switch-off commands have priority above switch-on commands.

2.1 Indication of instructions in the operating instructions

Symbols:

General danger symbol



Danger due to electrical voltage



Useful note:



Signal words:

DANGER!

Acutely dangerous situation

Non-observance results in death or the most serious of injuries.

WARNING!

The user can suffer (serious) injuries. 'Warning' implies that (serious) injury to persons is probable if this information is disregarded.

CAUTION!

There is a risk of damaging the product/unit. 'Caution' implies that damage to the product is likely if this information is disregarded.

NOTE: Useful information on handling the product. It draws attention to possible problems.

3 Transport and interim storage



CAUTION! Risk of damage!

Incorrect transport and interim storage can cause damage to the product.

- **The device is to be protected against moisture and mechanical damage.**
- **Electronic components must not be exposed to temperatures outside the range of -10°C to $+55^{\circ}\text{C}$.**

4 Intended use

Retrofittable Wilo plug-in module S1R-h for time-dependent programmable deactivation of Wilo secondary hot water circulation pumps with AC motors of the types Star-Z 20, Star-Z 25. Programming is performed on the digital time switch with day/week program and battery backup.

Correct use of the pump/installation also includes following these instructions.

Any use going over and beyond the intended use is considered to be improper.

5 Product information

5.1 Technical data

Connected voltage	1~230 V, 50 Hz		
Protection class	IP 42		
Air temperature [$^{\circ}\text{C}$] *	20	30	40
Fluid temperature [$^{\circ}\text{C}$] *	90	80	70

* Permissible ambient temperatures as a function of the fluid temperature at the pump

5.2 Scope of delivery

Plug-in module S1R-h with installation kit:

1 module base including PG screwed connection

1 module cover

2 module fastening screws M4x16

1 earthing screw M4x14

1 earthing sleeve

1 gasket

1 module cover screw

Installation and operating instructions

6 Description and function

The retrofittable plug-in module is used for time-dependent programmable deactivation of Wilo secondary hot water circulation pumps with AC motors (1~230 V, 50 Hz). Programming is performed on the digital time switch with day/week program and battery backup.

7 Installation and electrical connection

If the product is delivered in single components, these are to be assembled in accordance with these installation and operating instructions and all protective equipment is to be activated. Non-observance of the information and warnings regarding mounting and installation will impair the safety of the product/personnel and will void the given explanations regarding safety.



DANGER! Risk of fatal injury!

Incorrect installation and inexpert electrical connection can pose a risk of fatal injury.

- **The installation and electrical connection may only be carried out by qualified personnel in accordance with the applicable regulations!**
- **Accident prevention regulations must be observed!**
- **Observe the installation and operating instructions for the pump.**



WARNING! Risk of burns!

Depending on the operating status of the installation, the entire pump can become very hot. Touching the pump can cause burns.

Before working on the pump, let it cool down to room temperature.

7.1 Preparing for installation

Before starting work, check that the installation kit is complete. If it is not complete, please contact Wilo customer service.

- Check the current type and voltage of the mains connection.
- Disconnect the mains connection to the pump and secure it against being switched back on without authorisation.

7.2 Installation (Fig. 1-9)

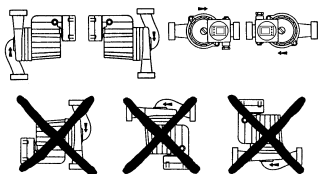


NOTE:

Deviating representations of the time switch below have no effect on the description for conversion to the time switch module S1R-h.

The time switch is programmed and adjusted in accordance with the separately included operating instructions.

Fig. 1:



Comply with permissible installation positions.

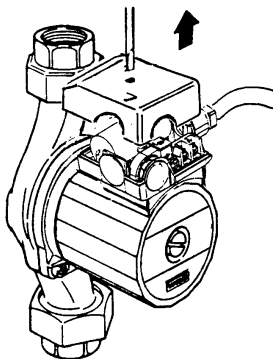


NOTE:

Turn the motor head by 180° if necessary.

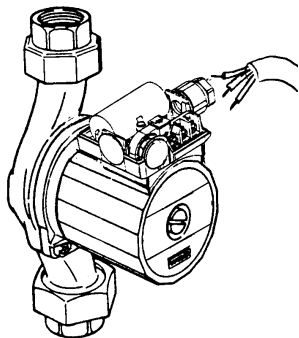
See the installation and operating instructions for the pump.

Fig. 2:



- Loosen the fastening screw of the terminal box cover.
- Remove the terminal box.

Fig. 3:

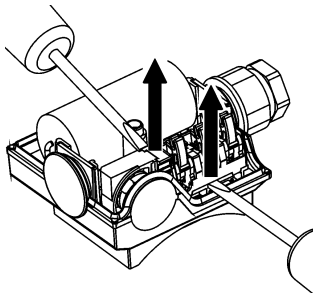


- Undo the PG screwed connection.
- Release the mains connection cable **L**, **N** and **PE** and pull it out of the PG screwed connection.



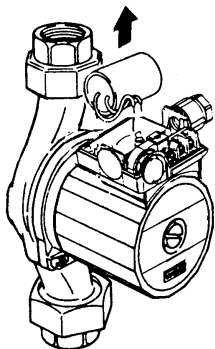
DANGER! Danger of electric shock!
The capacitor is live.
Let it discharge for at least 2 minutes for safety reasons.

Fig. 4:



- Carefully lift and remove the cover cap (⊥ ⊥) for the capacitor connection.

Fig. 5:

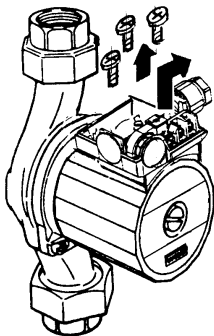


- Pull out the capacitor connection wires and remove the capacitor.

**NOTE:**

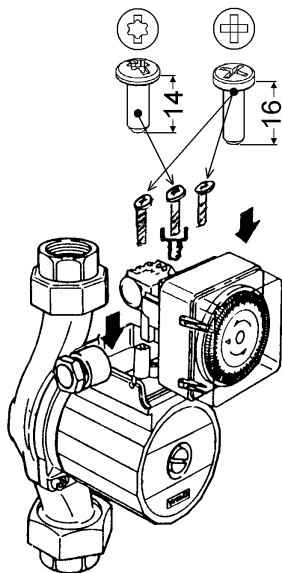
Set the capacitor aside for further use in the S1R-h.

Fig. 6:



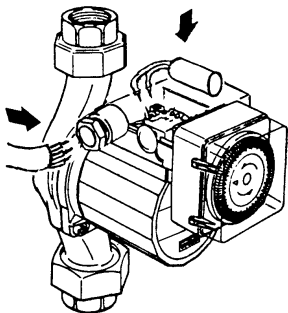
- Loosen the two module fastening screws and the earthing screw and carefully pull the module up and off of the motor head.

Fig. 7:



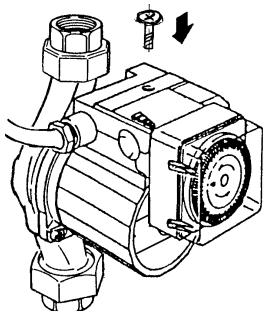
- Put the time switch module together with the accompanying base.
- Push the accompanying gasket beneath the module over the contact block and push it all the way to the bottom.
- Now carefully insert the pre-mounted module into the contact chamber block of the motor head, push it in firmly and make sure it sits correctly.
- Insert the earthing sleeve into the opening provided (**E↑**) and screw in the earthing screw.
- Screw in the two fastening screws into the available opening on the base next to (**E↑**) and tighten them with a screwdriver.

Fig. 8:



- Insert the capacitor into the recess of the terminal box.
- Align the connecting wires of the capacitor so that they can be easily inserted into the two sockets (↑ ↓).
- Position the wires properly.
- Insert the mains cable through the PG screwed connection and connect it to the terminals **L**, **N**, and the earthing screw (**E**↑).
- Tighten the PG screwed connection again.

Fig. 9:

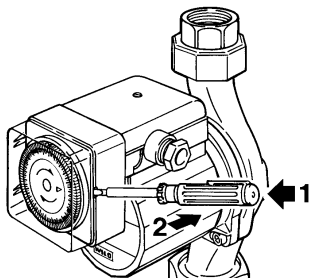


- Put on the supplied module cover including the fastening screw and tighten the screw.
- Reconnect the mains connection to the pump.

8 Commissioning/adjustment

May be performed by the operator!

Fig. 10:



- Carefully open the transparent cover with a screwdriver.



NOTE:

Program and adjust the time switch in accordance with the separately included operating instructions.

- Close the transparent cover

9 Disposal

Proper disposal and recycling of this product prevents damage to the environment and risks to personal health.

1. Use public or private disposal organisations when disposing of all or part of the product.
2. For more information on proper disposal, please contact your local council or waste disposal office or the supplier from whom you obtained the product.

Subject to change without prior notice!

D EG – Konformitätserklärung
GB EC – Declaration of conformity
F Déclaration de conformité CE

*(gemäß 2004/108/EG Anhang IV.2 und 2006/95/EG Anhang III.B,
according 2004/108/EC annex IV.2 and 2006/95/EC annex III.B,
conforme 2004/108/CE appendice IV.2 et 2006/95/CE appendice III B)*

Hiermit erklären wir, dass die Bauarten der Baureihe : **S1R-h**

Herewith, we declare that this product:

Par le présent, nous déclarons que cet agrégat :

in der gelieferten Ausführung folgenden einschlägigen Bestimmungen entspricht:
in its delivered state complies with the following relevant provisions:
est conforme aux dispositions suivants dont il relève:

Elektromagnetische Verträglichkeit – Richtlinie **2004/108/EG**
Electromagnetic compatibility – directive
Compatibilité électromagnétique – directive

Niederspannungsrichtlinie **2006/95/EG**
Low voltage directive
Directive basse-tension

Angewendete harmonisierte Normen, insbesondere: **EN 60730-1**
Applied harmonized standards, in particular: **EN 60730-2-7**
Normes harmonisées, notamment:

Bei einer mit uns nicht abgestimmten technischen Änderung der oben genannten Bauarten, verliert diese Erklärung ihre Gültigkeit.
If the above mentioned series are technically modified without our approval, this declaration shall no longer be applicable.
Si les gammes mentionnées ci-dessus sont modifiées sans notre approbation, cette déclaration perdra sa validité.

Dortmund, 19.04.2010

i. V.

Erwin Prieß
Quality Manager



WILO SE
Nortkirchenstraße 100
44263 Dortmund
Germany

<p>NL EG-verklaring van overeenstemming Hiermede verklaren wij dat dit aggregaat in de geleverde uitvoering voldoet aan de volgende bepalingen: Elektromagnetische compatibiliteit 2004/108/EG EG-laagspanningsrichtlijn 2006/95/EG gebruikte geharmoniseerde normen, in het bijzonder: zie vorige pagina</p>	<p>I Dichiarazione di conformità CE Con la presente si dichiara che i presenti prodotti sono conformi alle seguenti disposizioni e direttive rilevanti: Compatibilità elettromagnetica 2004/108/EG Direttiva bassa tensione 2006/95/EG norme armonizzate applicate, in particolare: vedi pagina precedente</p>
<p>E Declaración de conformidad CE Por la presente declaramos la conformidad del producto en su estado de suministro con las disposiciones pertinentes siguientes: Directiva sobre compatibilidad electromagnética 2004/108/EG Directiva sobre equipos de baja tensión 2006/95/EG normas armonizadas adoptadas, especialmente: véase página anterior</p>	<p>P Declaração de Conformidade CE Pela presente, declaramos que esta unidade no seu estado original, está conforme os seguintes requisitos: Compatibilidade electromagnética 2004/108/EG Directiva de baixa voltagem 2006/95/EG normas harmonizadas aplicadas, especialmente: ver página anterior</p>
<p>S CE- försäkran Härmed förklarar vi att denna maskin i levererat utförande motsvarar följande tillämpliga bestämmelser: EG-Elektromagnetisk kompatibilitet – riktlinje 2004/108/EG EG-Lågspänningsdirektiv 2006/95/EG tillämpade harmoniserade normer, i synnerhet: se föregående sida</p>	<p>N EU-Overensstemmelseserklæring Vi erklærer hermed at denne enhet i utførelse som levert er i overensstemmelse med følgende relevante bestemmelser: EG-EMV-Elektromagnetisk kompatibilitet 2004/108/EG EG-Lavspenningsdirektiv 2006/95/EG anvendte harmoniserte standarder, særlig: se forrige side</p>
<p>FIN CE-standardinmukaisuuslause Ilmoitamme täten, että tämä laite vastaa seuraavia asiaankuuluvia määräyksiä: Sähkömagneettinen soveltuvuus 2004/108/EG Matalajännite direktiivit: 2006/95/EG käytetyt yhteensovitettut standardit, erityisesti: katso edellinen sivu.</p>	<p>DK EF-overensstemmelseserklæring Vi erklærer hermed, at denne enhed ved levering overholder følgende relevante bestemmelser: Elektromagnetisk kompatibilitet: 2004/108/EG Lavvolts-direktiv 2006/95/EG anvendte harmoniserede standarder, særligt: se forrige side</p>
<p>H EK-megfelelőeségi nyilatkozat Ezennel kijelentjük, hogy az berendezés megfelel az alábbi irányelveknek: Elektromágneses összeférhetőség irányelv: 2004/108/EK Kisfeszültségű berendezések irányelv: 2006/95/EK alkalmazott harmonizált szabványoknak, különösen: lásd az előző oldalt</p>	<p>CZ Prohlášení o shodě ES Prohlašujeme tímto, že tento agregát v dodaném provedení odpovídá následujícím příslušným ustanovením: Směrnice o elektromagnetické kompatibilitě 2004/108/ES Směrnice pro nízké napětí 2006/95/ES použité harmonizační normy, zejména: viz předchozí strana</p>
<p>PL Deklaracja Zgodności WE Niniejszym deklarujemy z pełną odpowiedzialnością, że dostarczony wyrób jest zgodny z następującymi dokumentami: dyrektywą dot. kompatybilności elektromagnetycznej 2004/108/WE dyrektywą niskonapięciową 2006/95/WE stosowanymi normami zharmonizowanymi, a w szczególności: patrz poprzednia strona</p>	<p>RUS Декларация о соответствии Европейским нормам Настоящим документом заявляем, что данный агрегат в его объеме поставки соответствует следующим нормативным документам: Электромагнитная устойчивость 2004/108/EG Директивы по низковольтному напряжению 2006/95/EG Используемые согласованные стандарты и нормы, в частности: см. предыдущую страницу</p>

GR
Δήλωση συμμόρφωσης της ΕΕ
Δηλώνουμε ότι το προϊόν αυτό ο' αυτή την κατάσταση παράδοσης ικανοποιεί τις ακόλουθες διατάξεις:
Ηλεκτρομαγνητική συμβατότητα ΕΚ-2004/108/ΕΚ
Οδηγία χαμηλής τάσης ΕΚ-2006/95/ΕΚ
Εναρμονισμένα χρησιμοποιούμενα πρότυπα, ιδιαίτερα:
Βλέπε προηγούμενη σελίδα

RO
EC-Declarație de conformitate
Prin prezenta declarăm că acest produs așa cum este livrat, corespunde cu următoarele prevederi aplicabile:
Compatibilitatea electromagneticeă – directiva 2004/108/EG
Directiva privind tensiunea joasă 2006/95/EG
standarde armonizate aplicate, îndeosebi:
vezi pagina precedentă

LV
EC - atbilstības deklarācija
Ar šo mēs apliecinām, ka šis izstrādājums atbilst sekojošiem noteikumiem:
Elektromagnētiskās savietojamības direktīva 2004/108/EK
Zemsprieguma direktīva 2006/95/EK
piemēroti harmonizēti standarti, tai skaitā:
skatīt iepriekšējo lappusi

SK
ES vyhlásenie o zhode
Týmto vyhlasujeme, že konštrukcie tejto konštrukčnej série v dodanom vyhotovení vyhovujú nasledujúcim príslušným ustanoveniam:
Elektromagnetická zhoda – smernica 2004/108/ES
Nízkonapäťové zariadenia – smernica 2006/95/ES
používané harmonizované normy, najmä:
pozri predchádzajúcu stranu

BG
EO-Декларация за съответствие
Декларираме, че продуктът отговаря на следните изисквания:
Електромагнитна съвместимост – директива 2004/108/EO
Директива ниско напрежение 2006/95/EO
Хармонизирани стандарти:
вж. предната страница

TR
CE Uygunluk Teyid Belgesi
Bu cihazın teslim edildiği şekliyle aşağıdaki standartlara uygun olduğunu teyid ederiz:
Elektromanyetik Uyumluluk 2004/108/EG
Alçak gerilim yönetmeliği 2006/95/EG
kısımın kullanılan standartlar için:
bkz. bir önceki sayfa

EST
EÜ vastavusdeklaratsioon
Käesolevaga tõendame, et see toode vastab järgmistele asjakohastele direktiividele:
Elektromagnetilise ühilduvuse direktiiv 2004/108/EÜ
Madalpinge direktiiv 2006/95/EÜ
kohaldatud harmoneeritud standardid, eriti:
vt eelmist lk

LT
EB atitikties deklaracija
Šiuo pažymima, kad šis gaminys atitinka šias normas ir direktivas:
Elektromagnetinio suderinamumo direktyvą 2004/108/EB
Žemos įtampos direktyvą 2006/95/EB
pritaikytus vieningus standartus, o būtent:
žr. ankstesniame puslapyje

SLO
ES – izjava o skladnosti
Izjavljamo, da dobavljene vrste izvedbe te serije ustrezajo sledečim zadevnim določilom:
Direktiva o elektromagnetni združljivosti 2004/108/ES
Direktiva o nizki napetosti 2006/95/ES
uporabljeni harmonizirani standardi, predvsem:
glejte prejšnjo stran

M
Dikjarazzjoni ta' konformità KE
B'dan il-mezz, niddikjaraw li l-prodott tas-serje jissodisfaw id-dispożizzjonijiet rilevanti li ġejjin:
Kompatibbiltà elettromanjetika – Direttiva 2004/108/KE
Vultaġġ baxx – Direttiva 2006/95/KE
kif ukoll standards armonizzati b'mod partikolari:
ara l-paġna ta' qabel



WILO SE
Nortkirchenstraße 100
44263 Dortmund
Germany

WILO

WILO SE
 Nortkirchenstraße 100
 44263 Dortmund
 Germany
 T 0231 4102-0
 F 0231 4102-7363
 wilo@wilo.com
 www.wilo.de

Wilo – International (Subsidiaries)

Argentina

WILO SALMSON
 Argentina S.A.
 C1295ABI Ciudad
 Autónoma de Buenos Aires
 T + 54 11 4361 5929
 info@salmson.com.ar

Austria

WILO Pumpen
 Österreich GmbH
 1230 Wien
 T +43 507 507-0
 office@wilo.at

Azerbaijan

WILO Caspian LLC
 1065 Baku
 T +994 12 5962372
 info@wilo.az

Belarus

WILO Bel OOO
 220035 Minsk
 T +375 17 2503393
 wilo@wilo.by

Belgium

WILO SA/ NV
 1083 Ganshoren
 T +32 2 4823333
 info@wilo.be

Bulgaria

WILO Bulgaria Ltd.
 1125 Sofia
 T +359 2 9701970
 info@wilo.bg

Canada

WILO Canada Inc.
 Calgary, Alberta T2A 5L4
 T +1 403 2769456
 bill.lowe@wilo-na.com

China

WILO China Ltd.
 101300 Beijing
 T +86 10 58041888
 wilo@wilo.com.cn

Croatia

WILO Hrvatska d.o.o.
 10090 Zagreb
 T +38 51 3430914
 wilo-hrvatska@wilo.hr

Czech Republic

WILO Praha s.r.o.
 25101 Cestlice
 T +420 234 098711
 info@wilo.cz

Denmark

WILO Danmark A/S
 2690 Karlslunde
 T +45 70 253312
 wilo@wilo.dk

Estonia

WILO Eesti OÜ
 12618 Tallinn
 T +372 6509780
 info@wilo.ee

Finland

WILO Finland OY
 02330 Espoo
 T +358 207401540
 wilo@wilo.fi

France

WILO S.A.S.
 78390 Bois d'Arcy
 T +33 1 30050930
 info@wilo.fr

Great Britain

WILO (U.K.) Ltd.
 DE14 2WJ Burton-
 Upon-Trent
 T +44 1283 523000
 sales@wilo.co.uk

Greece

WILO Hellas AG
 14569 Anixi (Attika)
 T +302 10 6248300
 wilo.info@wilo.gr

Hungary

WILO Magyarország Kft
 2045 Torökbalánt
 (Budapest)
 T +36 23 889500
 wilo@wilo.hu

India

WILO India Mather and
 Platt Pumps Ltd.
 Pune 411019
 T +91 20 27442100
 service@
 pun.matherplatt.co.in

Indonesia

WILO Pumps Indonesia
 Jakarta Selatan 12140
 T +62 21 7247676
 citrawilo@cbn.net.id

Ireland

WILO Engineering Ltd.
 Limerick
 T +353 61 227566
 sales@wilo.ie

Italy

WILO Italia s.r.l.
 20068 Peschiera Borromeo
 (Milano)
 T +39 25538351
 wilo.italia@wilo.it

Kazakhstan

WILO Central Asia
 050002 Almaty
 T +7 727 2785961
 in.pak@wilo.kz

Korea

WILO Pumps Ltd.
 621-807 Gimhae
 Gyeongnam
 T +82 55 3405890
 wilo@wilo.co.kr

Latvia

WILO Baltic SIA
 1019 Riga
 T +371 67 145229
 mail@wilo.lv

Lebanon

WILO SALMSON
 Lebanon
 12022030 El Metn
 T +961 4 722280
 wsl@cyberia.net.lb

Lithuania

WILO Lietuva UAB
 03202 Vilnius
 T +370 5 2136495
 mail@wilo.lt

The Netherlands

WILO Nederland b.v.
 1551 NA Westzaan
 T +31 88 9456 000
 info@wilo.nl

Norway

WILO Norge AS
 0975 Oslo
 T +47 22 804570
 wilo@wilo.no

Poland

WILO Polska Sp. z o.o.
 05-090 Raszyn
 T +62 22 7026161
 wilo@wilo.pl

Portugal

Bombas Wilo-Salmson
 Portugal Lda.
 4050-040 Porto
 T +351 22 2080350
 bombas@wilo.pt

Romania

WILO Romania s.r.l.
 077040 Com. Chiajna Jud.
 Ilfov
 T +40 21 3170164
 wilo@wilo.ro

Russia

WILO Rus ooo
 123592 Moscow
 T +7 495 7810690
 wilo@wilo.ru

Saudi Arabia

WILO ME – Riyadh
 Riyadh 11465
 T +966 1 4624430
 wshoula@wataniand.com

Serbia and Montenegro

WILO Beograd d.o.o.
 11000 Beograd
 T +381 11 2851278
 office@wilo.co.yu

Slovakia

WILO Slovakia s.r.o.
 82008 Bratislava 28
 T +421 2 45520122
 wilo@wilo.sk

Slovenia

WILO Adriatic d.o.o.
 1000 Ljubljana
 T +386 1 5838130
 wilo.adriatic@wilo.si

South Africa

Salmson South Africa
 1610 Edenvale
 T +27 11 6082780
 errof.comelius@
 salmson.co.za

Spain

WILO Ibérica S.A.
 28806 Alcalá de Henares
 (Madrid)
 T +34 91 8797100
 wilo.iberica@wilo.es

Sweden

WILO Sverige AB
 35246 Växjö
 T +46 470 727600
 wilo@wilo.se

Switzerland

EMB Pumpen AG
 4310 Rheinfelden
 T +41 61 83680-20
 info@emb-pumpen.ch

Taiwan

WILO-EMU Taiwan Co. Ltd.
 110 Taipei
 T +886 227 391655
 nelson.wu@
 wiloemotaiwan.com.tw

Turkey

WILO Pompa Sistemleri
 San. ve Tic. A.Ş.
 34530 Istanbul
 T +90 216 6610211
 wilo@wilo.com.tr

Ukraine

WILO Ukraina t.o.w.
 01033 Kiev
 T +38 044 2011870
 wilo@wilo.ua

United Arab Emirates

WILO Middle East FZE
 Jebel Ali – Dubai
 T +971 4 886 4771
 info@wilo.com.sa

USA

WILO-EMU USA LLC
 Thomasville,
 Georgia 31792
 T +1 229 5480097
 info@wilo-emu.com

WILO USA LLC

Melrose Park, Illinois 60160
 T +1 708 3389456
 mike.easterley@
 wilo-na.com

Vietnam

WILO Vietnam Co Ltd.
 Ho Chi Minh City, Vietnam
 T +84 8 38109975
 nkminh@wilo.vn

Wilo – International (Representation offices)

Algeria

Bad Ezzouar, Dar El Beida
 T +213 21 247979

Armenia

375001 Yerevan
 T +374 10 544336

Bosnia and Herzegovina

71000 Sarajevo
 T +387 33 714510

Georgia

0179 Tbilisi
 T +995 32 306375

Macedonia

1000 Skopje
 T +389 2 3122058

Mexico

07300 Mexico
 T +52 55 55863209

Moldova

2012 Chisinau
 T +373 2 223501

Rep. Mongolia

Ulaanbaatar
 T +976 11 314843

Tajikistan

734025 Dushanbe
 T +992 37 2232908

Turkmenistan

744000 Ashgabat
 T +993 12 345838

Uzbekistan

100015 Tashkent
 T +998 71 1206774

November 2009

WILO

WILO SE
 Nordkirchenstraße 100
 44263 Dortmund
 Germany
 T 0231 4102-0
 F 0231 4102-7363
 wilo@wilo.com
 www.wilo.de

Wilo-Vertriebsbüros in Deutschland

G1 Nord

WILO SE
 Vertriebsbüro Hamburg
 Beim Strohhaus 27
 20097 Hamburg
 T 040 5559490
 F 040 5559494
 hamburg.anfragen@wilo.com

G3 Ost

WILO SE
 Vertriebsbüro Dresden
 Frankenring 8
 01723 Kesselsdorf
 T 035204 7050
 F 035204 70570
 dresden.anfragen@wilo.com

G5 Süd-West

WILO SE
 Vertriebsbüro Stuttgart
 Hertichstraße 10
 71229 Leonberg
 T 07152 94710
 F 07152 947141
 stuttgart.anfragen@wilo.com

G7 West

WILO SE
 Vertriebsbüro Düsseldorf
 Westring 19
 40721 Hilden
 T 02103 90920
 F 02103 909215
 duesseldorf.anfragen@wilo.com

G2 Nord-Ost

WILO SE
 Vertriebsbüro Berlin
 Juliusstraße 52-53
 12051 Berlin-Neukölln
 T 030 6289370
 F 030 62893770
 berlin.anfragen@wilo.com

G4 Süd-Ost

WILO SE
 Vertriebsbüro München
 Adams-Lehmann-Straße 44
 80797 München
 T 089 4200090
 F 089 42000944
 muenchen.anfragen@wilo.com

G6 Mitte

WILO SE
 Vertriebsbüro Frankfurt
 An den drei Hasen 31
 61440 Oberursel/Ts.
 T 06171 70460
 F 06171 704665
 frankfurt.anfragen@wilo.com

Kompetenz-Team Gebäudetechnik

WILO SE
 Nordkirchenstraße 100
 44263 Dortmund
 T 0231 4102-7516
 T 01805 R-U-F-W-I-L-O*
 7-8-3-9-4-5-6
 F 0231 4102-7666

Erreichbar Mo-Fr von 7-18 Uhr.

- Antworten auf
 - Produkt- und Anwendungsfragen
 - Liefertermine und Lieferzeiten
- Informationen über Ansprechpartner vor Ort
- Versand von Informationsunterlagen

Kompetenz-Team Kommune Bau + Bergbau

WILO EMU GmbH
 Heimgartenstraße 1
 95030 Hof
 T 09281 974-550
 F 09281 974-551

Werkkundendienst Gebäudetechnik Kommune Bau + Bergbau Industrie

WILO SE
 Nordkirchenstraße 100
 44263 Dortmund
 T 0231 4102-7900
 T 01805 W-I-L-O-K-D*
 9-4-5-6-5-3
 F 0231 4102-7126
 kundendienst@wilo.com

Erreichbar Mo-So von
 7-18 Uhr.
 In Notfällen täglich
 auch von
 18-7 Uhr.

- Kundendienst-
Anforderung
- Werksreparaturen
- Ersatzteilfragen
- Inbetriebnahme
- Inspektion
- Technische Service-
Beratung
- Qualitätsanalyse

Wilo-International

Österreich

Zentrale Wien:
 WILO Pumpen
 Österreich GmbH
 Eitnergasse 13
 1230 Wien
 T +43 507 507-0
 F +43 507 507-15

Vertriebsbüro Salzburg:
 Gnigler Straße 56
 5020 Salzburg
 T +43 507 507-13
 F +43 507 507-15

Vertriebsbüro
 Oberösterreich:
 Trattnachtalstraße 7
 4710 Grieskirchen
 T +43 507 507-26
 F +43 507 507-15

Schweiz

EMB Pumpen AG
 Gerstenweg 7
 4310 Rheinfelden
 T +41 61 83680-20
 F +41 61 83680-21

Standorte weiterer Tochtergesellschaften

Argentinien,
 Aserbaidschan, Belarus,
 Belgien, Bulgarien, China,
 Dänemark, Estland,
 Finnland, Frankreich,
 Griechenland,
 Großbritannien, Indien,
 Indonesien, Irland, Italien,
 Kanada, Kasachstan, Korea,
 Kroatien, Lettland, Libanon,
 Litauen, Niederlande,
 Norwegen, Polen, Portugal,
 Rumänien, Russland,
 Saudi-Arabien, Schweden,
 Serbien und Montenegro,
 Slowakei, Slowenien,
 Spanien, Südafrika, Taiwan,
 Tschechien, Türkei,
 Ukraine, Ungarn, USA,
 Vereinigte Arabische
 Emirate, Vietnam

Die Adressen finden Sie
 unter www.wilo.com.

Stand Januar 2010

* 0,14 €/Min. aus dem Festnetz,
 Mobilfunk max. 0,42 €/Min.