

Wilo-DrainLift MINI3 **Wilo-DrainLift MINI5**

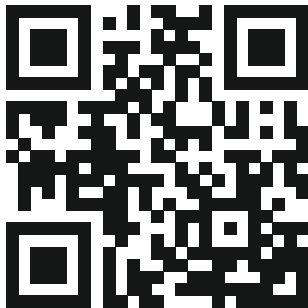
Emergency drain connection



en Installation instructions



DrainLift MINI3
<https://qr.wilo.com/458>



DrainLift MINI5
<https://qr.wilo.com/459>

Table of contents

1 Safety 4

1.1 Personnel qualifications..... 4

1.2 Personal protective equipment 4

1.3 Installation 4

1.4 Copyright 4

2 Product description 4

2.1 Product description 4

2.2 Scope of delivery..... 4

3 Installation..... 4

3.1 Installing the emergency drain 4

3.2 Function test 6

1 Safety

1.1 Personnel qualifications

- Persons aged 16 and over
- Assembly instructions are read and understood.

1.2 Personal protective equipment

- Safety gloves (EN 388): uvex phynomic wet
- Safety glasses (EN 166): uvex skyguard NT

Additionally, when handling used products:

- Respiratory mask (EN 149): Half mask 3M series 6000 with filter 6055 A2

The aforementioned branded products constitute non-binding suggestions. Similar products from other brands can also be used. WILO SE does not assume any liability for the aforementioned products.

1.3 Installation



DANGER

Danger of bacterial infection!

In used systems, germs and bacteria can form in the tank and at the connection port. To avoid a bacterial infection, note the following:

- Wear additional protective equipment.
- Drain the lifting unit completely.
- Clean and disinfect the lifting unit and connection port.
- Ventilate the room properly.
- Wipe up drips immediately.
- Clean and disinfect tools after use.

- Wear protective equipment:
- Disconnect the product from the power supply (pull plug) and secure it against being switched on again without authorisation (switch off fuse).
- Check connections for impermeability.

1.4 Copyright

WILO SE © 2025

The reproduction, distribution and utilisation of this document in addition to communication of its contents to others without express consent is prohibited. Offenders will be held liable for payment of damages. All rights reserved.

2 Product description

2.1 Product description

The tank has a connection for an emergency drain. If the system fails, empty the tank manually via the emergency drain. To do this, install a diaphragm hand pump at the drainage point.

Restricted functionality for units with WC connection

The emergency drain function is not guaranteed for lifting units with a WC connection. Due to the small diameter of the hose, solids in the tank can clog the emergency drain.

2.2 Scope of delivery

The “Emergency drain” kit consists of the following components:

- Hose 12x2 mm, length: 1 m, part number: 003-593
- 16 mm hose clamp with one ear, part number: 003-594

The components of the DrainLift MINI5 lifting units are located in bag “A” (499-901).

NOTICE! For the DrainLift MINI3 lifting units, order the “Emergency drain” kit as an accessory.

3 Installation

3.1 Installing the emergency drain

Observe the following points for the connection:

- Tighten the connection on the tank and the diaphragm hand pump.
- Connect the open end of the hose to a diaphragm hand pump. The diaphragm hand pump is to be provided by the customer.
- Required tools:
 - 7 mm drill: Open the drain port of the tank.
 - Ear clamp pliers: for attaching the hose to the drain port with the hose clamp with one ear.

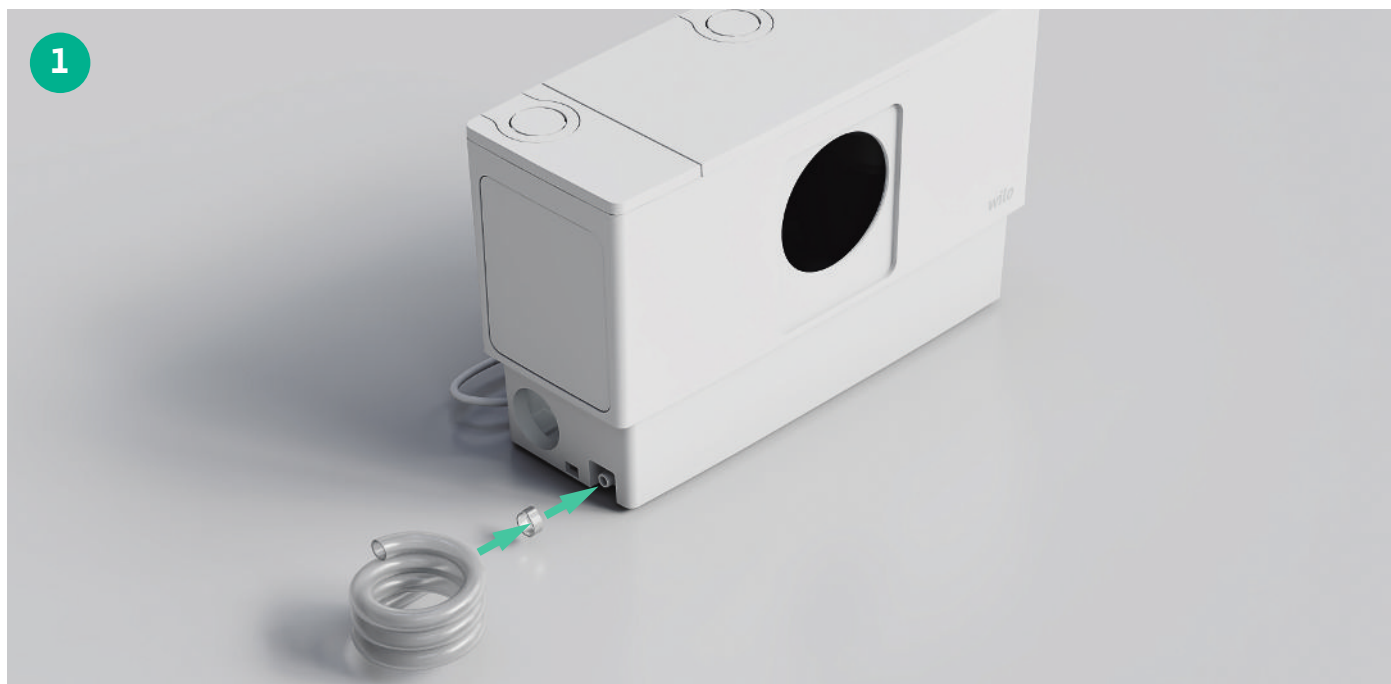


Fig. 1: Overview of components

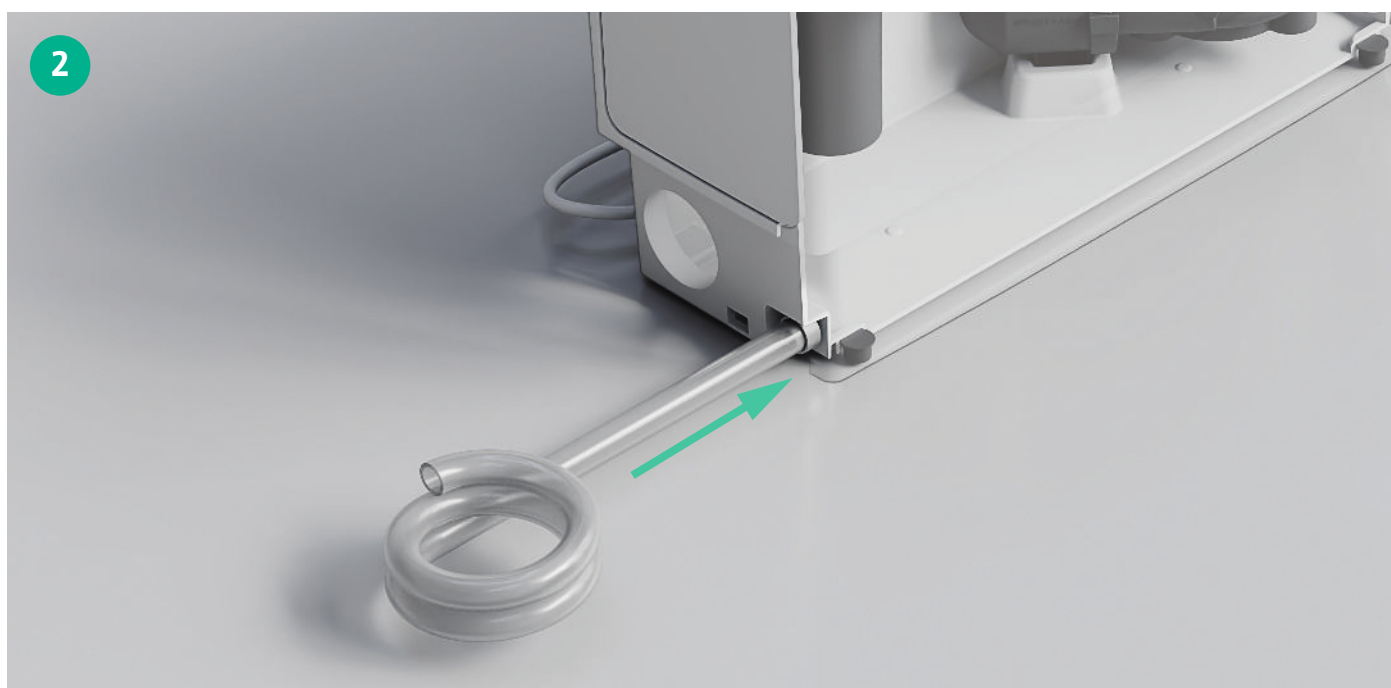


Fig. 2: Hose connected

- ✓ System is voltage-free.
 - ✓ For used systems: Tank emptied, cleaned and disinfected.
 - ✓ Protective equipment put on.
 - ✓ Assembly instructions for the lifting unit are available.
1. Drill out the connection for the emergency drain on the tank.
CAUTION! Carefully drill out the connection port. A pump or level sensor is located behind the connection port. The components behind it could be damaged.
 2. Deburr the inside edge of the connection port.
 3. Remove drilling chips.
 4. Slide the hose clamp with two ears onto the hose.
 5. Push the hose onto the drain port as far as it will go.
 6. Slide the hose clamp with two ears onto the drain port.
 7. Attach the hose to the drain port using the hose clamp with two ears.
 8. Lay the hose to the diaphragm hand pump.
CAUTION! Observe the bending radius. Allow no kinks in the hose.
 9. Connect the hose to the diaphragm hand pump.

- ▶ Emergency drain mounted.

3.2 Function test

After the lifting unit has been completely installed, carry out a function test on the emergency drain.

1. Fill the tank with water up to 2 cm below the top edge.
⇒ Check drain port connection for impermeability.
2. Drain the tank using the diaphragm hand pump.
⇒ Check the connection on the diaphragm hand pump for impermeability.
▶ All connections impermeable, tank can be drained: Function test passed.





Pioneering for You



Local contact at
www.wilo.com/contact

WILO SE
Wilopark 1
44263 Dortmund
Germany
T +49 (0)231 4102-0
T +49 (0)231 4102-7363
wilo@wilo.com
www.wilo.com