

## Wilo-DrainLift MINI3-XS/WC Wilo-DrainLift MINI5-XS/WC

WC connection modification



**en**    Installation instructions



DrainLift MINI3  
<https://qr.wilo.com/458>



DrainLift MINI5  
<https://qr.wilo.com/459>

Table of contents

**1 Safety ..... 4**

1.1 Personnel qualifications..... 4

1.2 Personal protective equipment ..... 4

1.3 Modification work..... 4

1.4 Copyright ..... 4

**2 Product description ..... 5**

**3 Modification ..... 5**

3.1 Preparatory tasks ..... 5

3.2 Modifying the WC connection ..... 6

3.3 Final tasks ..... 8

## 1 Safety

### 1.1 Personnel qualifications

- Persons aged 16 and over
- Assembly instructions are read and understood.

### 1.2 Personal protective equipment

- Safety gloves (EN 388): uvex phynomic wet
- Safety glasses (EN 166): uvex skyguard NT

#### Additionally, when handling used products:

- Respiratory mask (EN 149): Half mask 3M series 6000 with filter 6055 A2

The aforementioned branded products constitute non-binding suggestions. Similar products from other brands can also be used. WILO SE does not assume any liability for the aforementioned products.

### 1.3 Modification work



#### DANGER

##### Danger of bacterial infection!

In used systems, germs and bacteria can form in the tank and at the connection port. To avoid a bacterial infection, note the following:

- Wear additional protective equipment.
- Drain the lifting unit completely.
- Clean and disinfect the lifting unit and connection port.
- Ventilate the room properly.
- Wipe up drips immediately.
- Clean and disinfect tools after use.

- Wear protective equipment:
- Disconnect the product from the power supply (pull plug) and secure it against being switched on again without authorisation (switch off fuse).
- Fingers can be crushed when installing the blanking cover on the WC connection and inserting the pump. Perform work carefully.
- Check the blanking cover on the WC connection for impermeability.

### 1.4 Copyright

WILO SE © 2025

The reproduction, distribution and utilisation of this document in addition to communication of its contents to others without express consent is prohibited. Offenders will be held liable for payment of damages. All rights reserved.

## 2 Product description

At the factory, the WC connection of the DrainLift MINI3-XS/WC and MINI5-XS/WC lifting units is positioned on the front. If required, install the WC connection laterally:

- DrainLift MINI3-XS/WC: WC connection right-hand side
- DrainLift MINI5-XS/WC: WC connection left-hand side

To close the open WC connection, remove the blanking cover from the lateral WC connection and fit it to the open WC connection. A stationary ring with bayonet coupling fixes the blanking cover to the tank.

## 3 Modification

### 3.1 Preparatory tasks

#### DrainLift MINI3-XS/WC

- ✓ System is voltage-free.
  - ✓ Clean tank, disinfect if necessary.
  - ✓ Assembly instructions for the lifting unit are available.
1. Remove the cover.
  2. Remove the pump.
    - ▶ System is prepared for modification.

#### DrainLift MINI5-XS/WC

- ✓ System is voltage-free.
  - ✓ Clean tank, disinfect if necessary.
  - ✓ Assembly instructions for the lifting unit are available.
1. Remove the cover.
  2. Pull the connection cable from the pump.
  3. Remove the maintenance unit.
    - ▶ System is prepared for modification.

### 3.2 Modifying the WC connection

Starting situation WC connection open at the front, closed laterally.  
Bar on the stationary ring vertical.

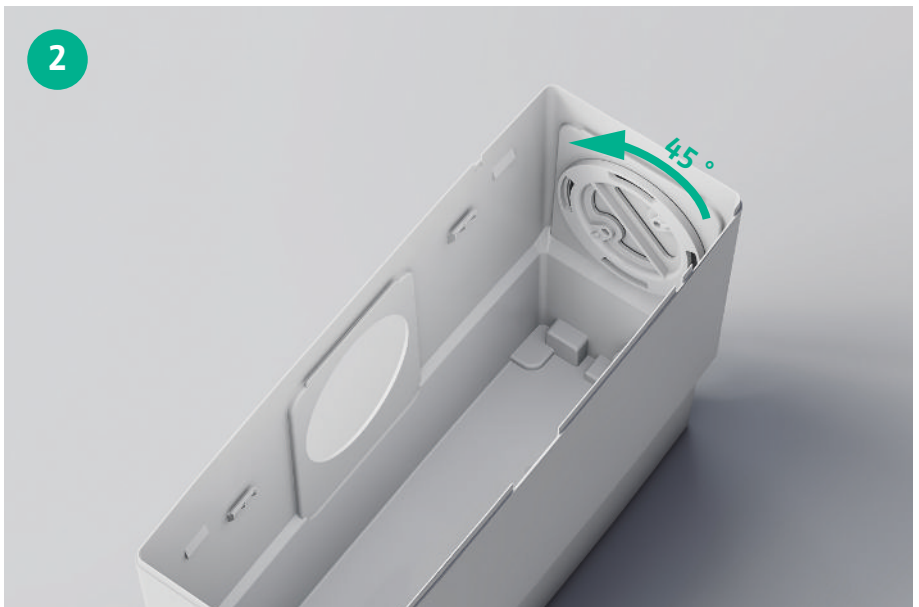
**NOTICE!** In order to better visualise the process, the work steps are depicted with an empty tank.

1



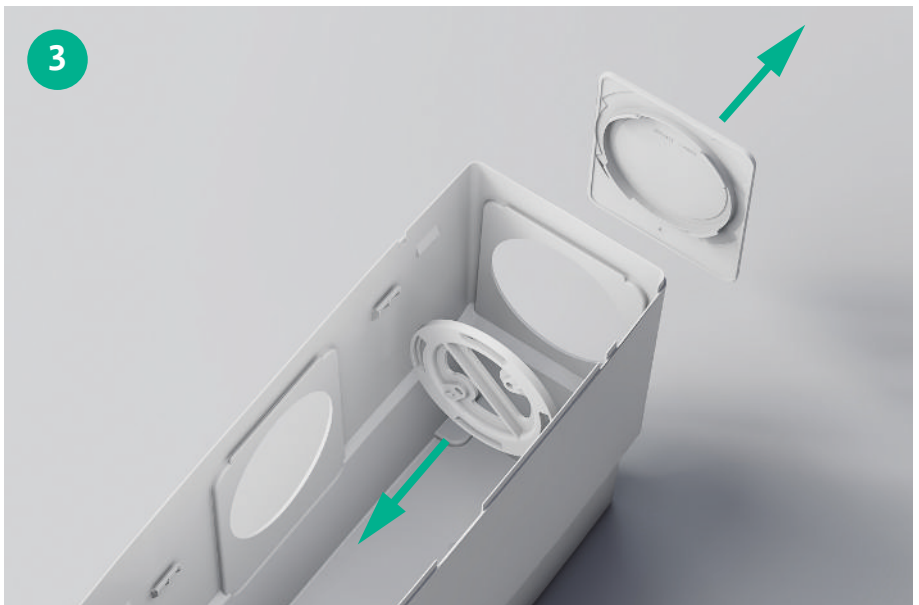
Loosen the blanking cover: Rotate the stationary ring 45° to the left.  
Bar on the stationary ring at an angle.

2

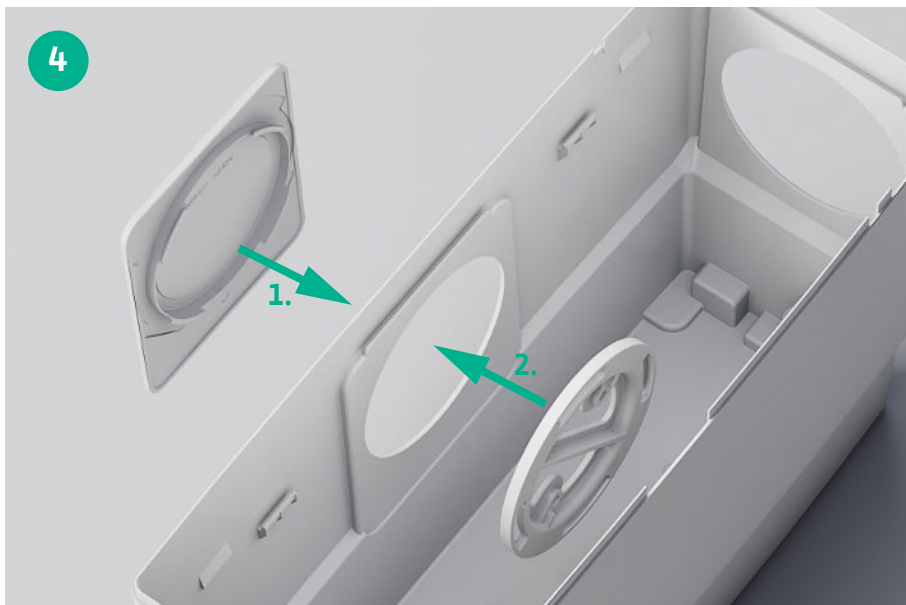


Open the side lock: Remove the stationary ring and push the blanking cover out

3



Close the opening at the front: Press the blanking cover onto the opening and fit the stationary ring.  
Bar on the stationary ring diagonal.



Fix the blanking cover: Turn the stationary ring 45° to the right.



Blanking cover affixed: Bar on stationary ring vertical.



### 3.3 Final tasks

#### DrainLift MINI3-XS/WC

- ✓ Assembly instructions for the lifting unit are available.
- 1. Insert the pump.
- 2. Put on the cover.
  - ▶ WC connection is modified.
  - ▶ Refer to the assembly instructions for the lifting unit for all further assembly steps.

#### DrainLift MINI5-XS/WC

- ✓ Assembly instructions for the lifting unit are available.
- 1. Reinstall the maintenance unit.
- 2. Plug the connection cable for the pump back in.
- 3. Put on the cover.
  - ▶ WC connection is modified.
  - ▶ Refer to the assembly instructions for the lifting unit for all further assembly steps.









Pioneering for You



Local contact at  
[www.wilo.com/contact](http://www.wilo.com/contact)

WILO SE  
Wilopark 1  
44263 Dortmund  
Germany  
T +49 (0)231 4102-0  
T +49 (0)231 4102-7363  
[wilo@wilo.com](mailto:wilo@wilo.com)  
[www.wilo.com](http://www.wilo.com)