

Wilo-DrainLift MINI5-XS/C **Wilo-DrainLift MINI5-XS/WC**

Installing the depth suction



en Installation instructions



DrainLift MINI5
<https://qr.wilo.com/459>

Table of contents

- 1 Safety 4**
 - 1.1 Personnel qualifications..... 4
 - 1.2 Personal protective equipment 4
 - 1.3 Installation 4
 - 1.4 Copyright 4
- 2 Product description 4**
- 3 Installation..... 4**
 - 3.1 Preparatory tasks 4
 - 3.2 Installing the depth suction 5
 - 3.3 Final tasks 7

1 Safety

1.1 Personnel qualifications

- Persons aged 16 and over
- Assembly instructions are read and understood.

1.2 Personal protective equipment

- Safety gloves (EN 388): uvex phynomic wet
- Safety glasses (EN 166): uvex skyguard NT

Additionally, when handling used products:

- Respiratory mask (EN 149): Half mask 3M series 6000 with filter 6055 A2

The aforementioned branded products constitute non-binding suggestions. Similar products from other brands can also be used. WILO SE does not assume any liability for the aforementioned products.

1.3 Installation



DANGER

Danger of bacterial infection!

In used systems, germs and bacteria can form in the tank and at the connection port. To avoid a bacterial infection, note the following:

- Wear additional protective equipment.
- Drain the lifting unit completely.
- Clean and disinfect the lifting unit and connection port.
- Ventilate the room properly.
- Wipe up drips immediately.
- Clean and disinfect tools after use.

- Wear protective equipment:
- Disconnect the product from the power supply (pull plug) and secure it against being switched on again without authorisation (switch off fuse).

1.4 Copyright

WILO SE © 2025

The reproduction, distribution and utilisation of this document in addition to communication of its contents to others without express consent is prohibited. Offenders will be held liable for payment of damages. All rights reserved.

2 Product description

The maximum inlet height set in the factory is 95 mm (3.7 in). The depth suction reduces the maximum inlet height to 65 mm (2.6 in).

Restriction for the “Silent mode” operating mode

Depth suction and the “Silent mode” operating mode cannot be combined. As soon as the lifting unit is operating with a depth suction, the “Silent mode” operating mode is **no longer** available.

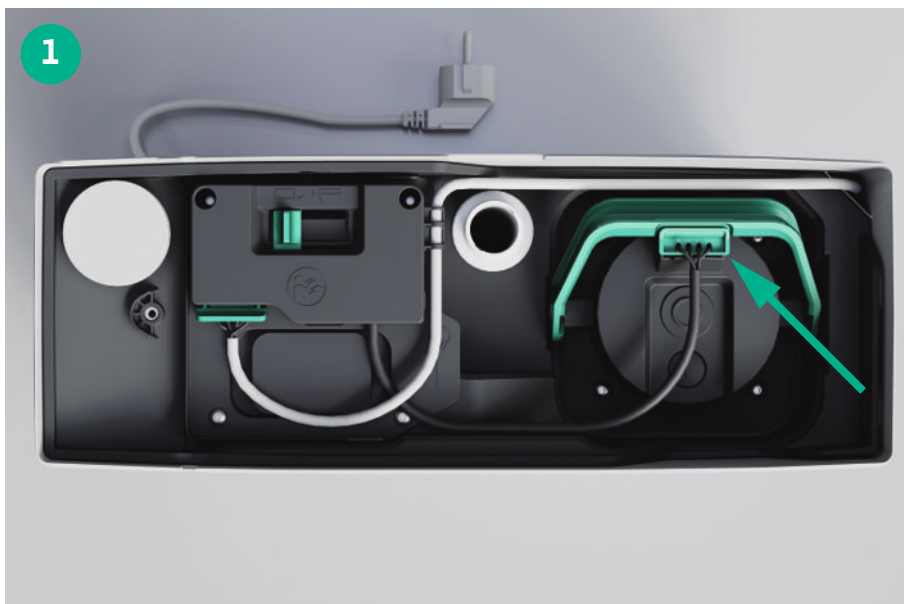
3 Installation

3.1 Preparatory tasks

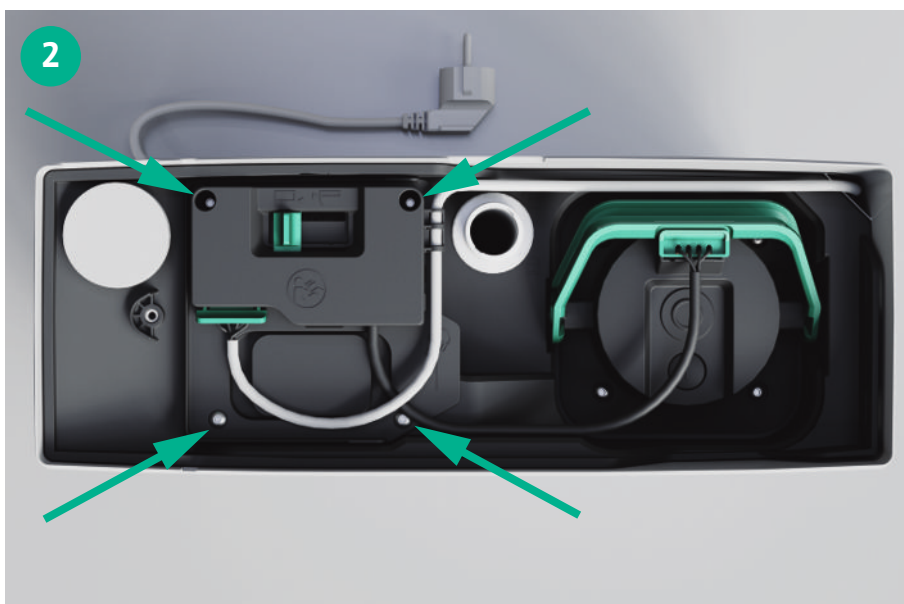
- ✓ System is voltage-free.
 - ✓ Clean tank, disinfect if necessary.
 - ✓ Tools are available: Screwdriver for Torx screws, size TX20
 - ✓ Material available:
 - O-ring (049-051), bag A (499-901)
 - Extension (499-040), bag A (499-901)
 - ✓ Assembly instructions for the lifting unit are available.
1. Remove the cover.
 - ▶ System is prepared for modification.

3.2 Installing the depth suction

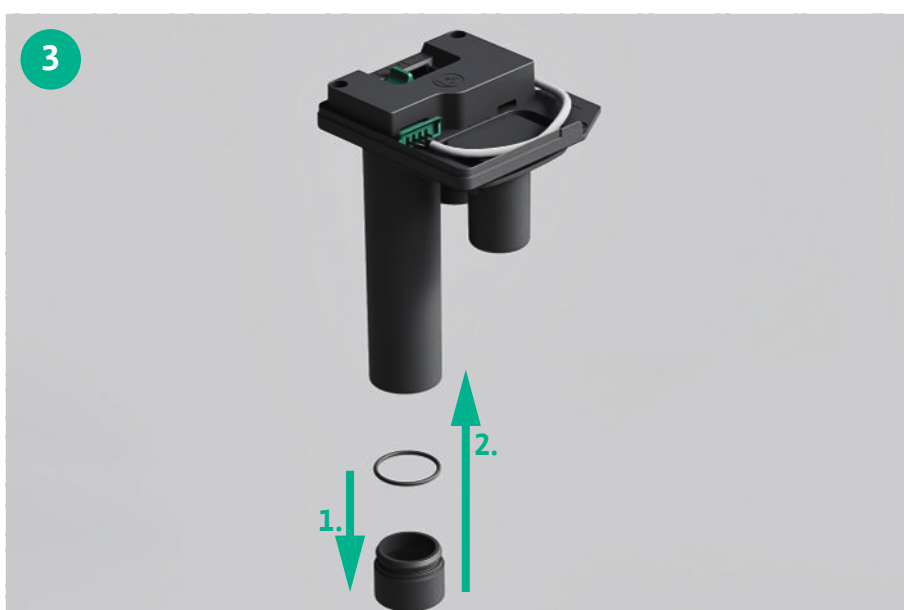
Pull the plug from the pump.



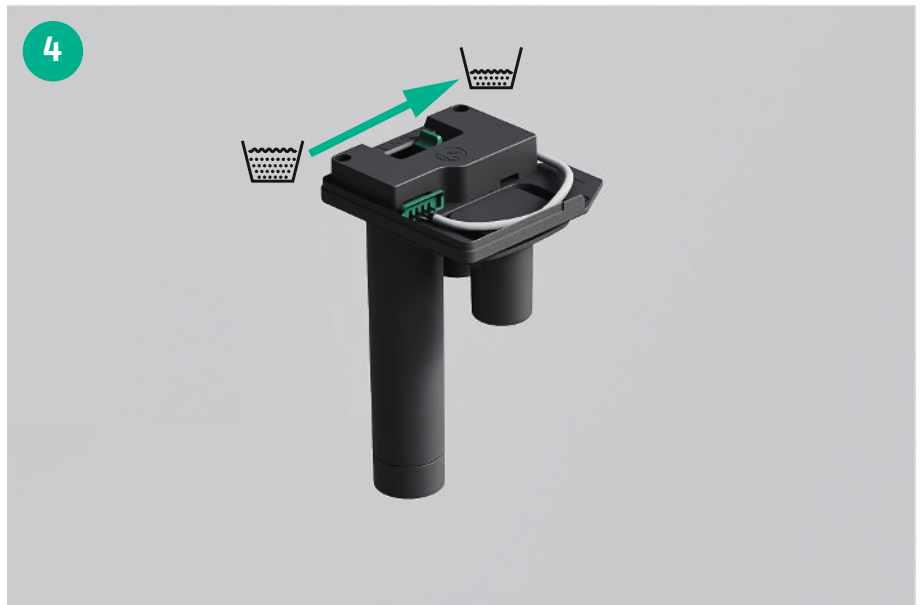
Unscrew the four screws (TX20) and remove the maintenance unit.



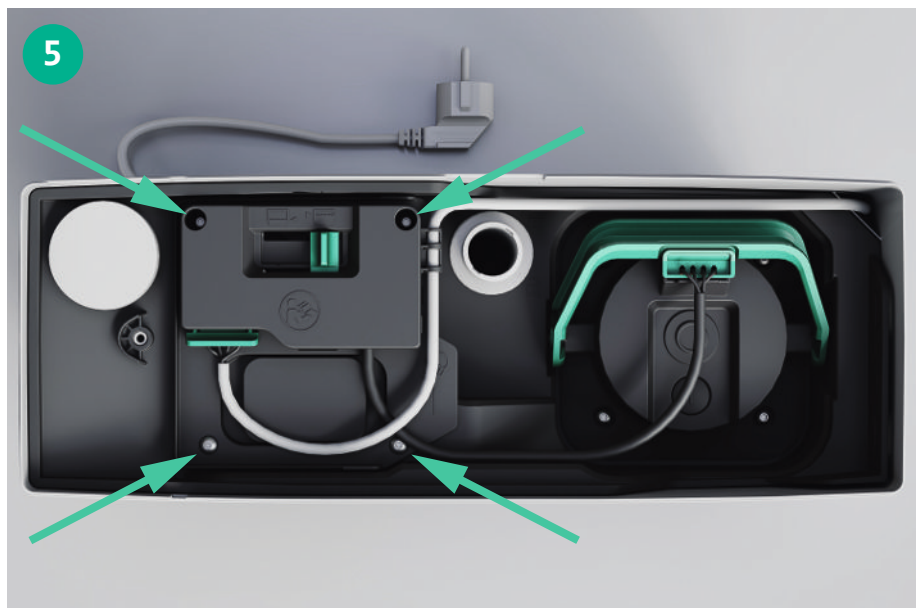
1. Fit the O-ring (049-051) onto the extension (499-040).
2. Insert the extension (499-040) into the pipe.



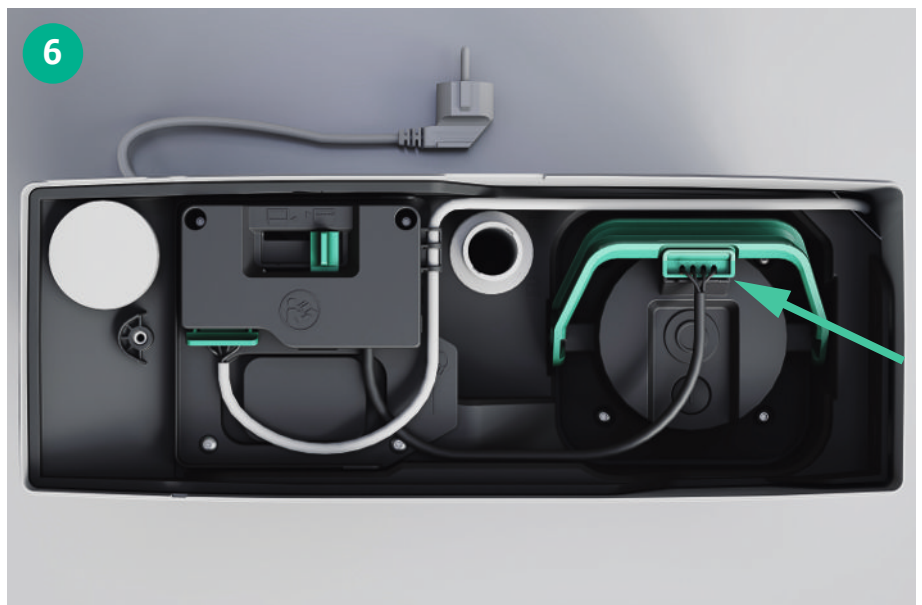
Adjust the sliding switch.



Insert the maintenance unit and fix it with the four screws.



Insert the plug into the pump.



3.3 Final tasks

- ✓ Assembly instructions for the lifting unit are available.
- 1. Put on the cover.
 - ▶ Depth suction is installed.
 - ▶ Refer to the assembly instructions for the lifting unit for all further assembly steps.



1. **Introduction** (10 minutes)

2. **Background** (10 minutes)

3. **Methodology** (10 minutes)

4. **Results** (10 minutes)

5. **Conclusion** (10 minutes)

6. **References** (10 minutes)

7. **Appendix** (10 minutes)

8. **Summary** (10 minutes)

9. **Q&A** (10 minutes)

10. **Final Remarks** (10 minutes)

11. **Thank You** (10 minutes)

12. **End of Presentation** (10 minutes)

13. **Feedback** (10 minutes)

14. **Next Steps** (10 minutes)

15. **Conclusion** (10 minutes)

16. **References** (10 minutes)

17. **Appendix** (10 minutes)

18. **Summary** (10 minutes)

19. **Q&A** (10 minutes)

20. **Final Remarks** (10 minutes)

21. **Thank You** (10 minutes)

22. **End of Presentation** (10 minutes)

23. **Feedback** (10 minutes)

24. **Next Steps** (10 minutes)

25. **Conclusion** (10 minutes)

26. **References** (10 minutes)

27. **Appendix** (10 minutes)

28. **Summary** (10 minutes)

29. **Q&A** (10 minutes)

30. **Final Remarks** (10 minutes)

31. **Thank You** (10 minutes)

32. **End of Presentation** (10 minutes)

33. **Feedback** (10 minutes)

34. **Next Steps** (10 minutes)

35. **Conclusion** (10 minutes)









Pioneering for You



Local contact at
www.wilo.com/contact

WILO SE
Wilopark 1
44263 Dortmund
Germany
T +49 (0)231 4102-0
T +49 (0)231 4102-7363
wilo@wilo.com
www.wilo.com