

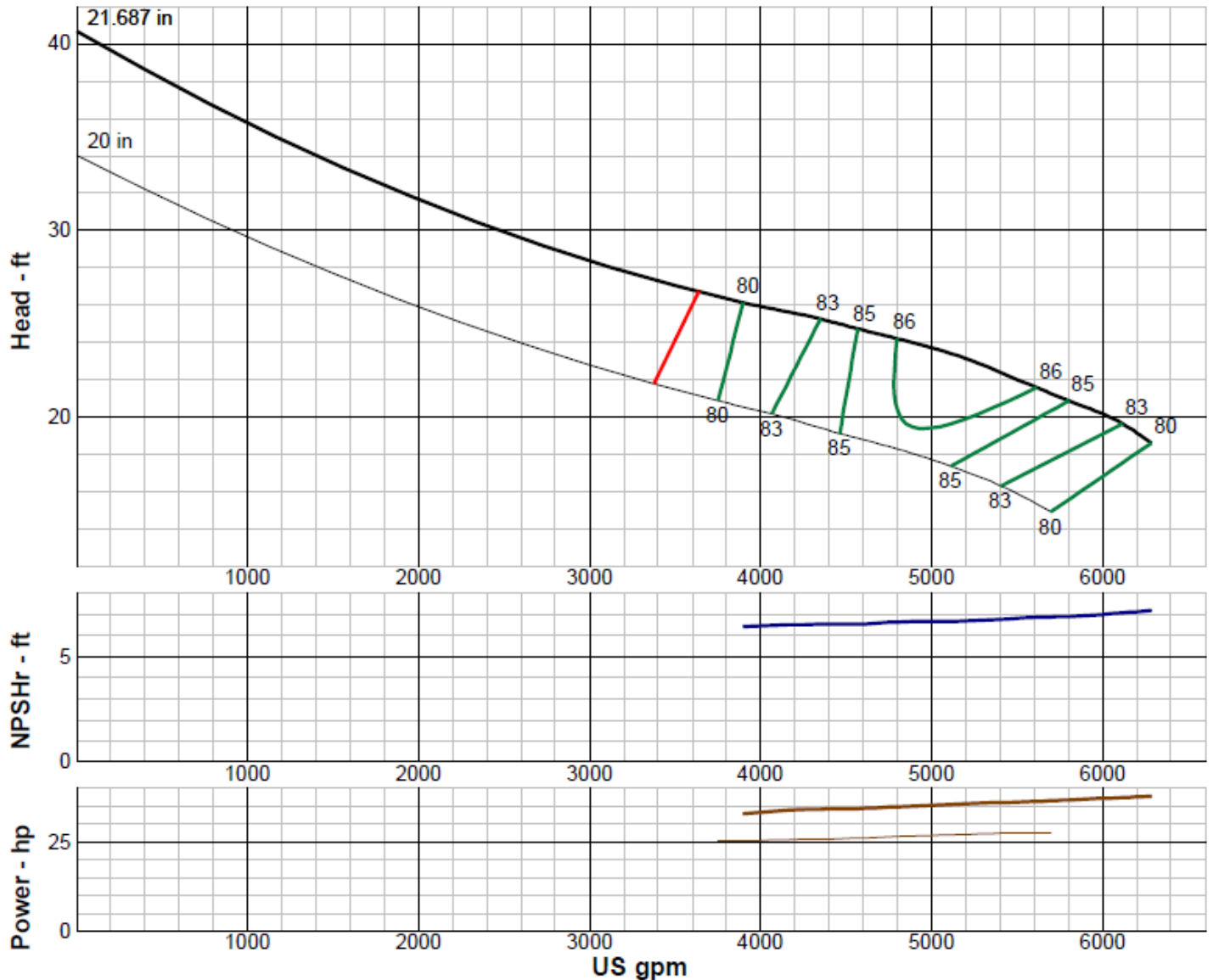
Wilo-Vertical Turbine Pump Curve

Single Stage Performance

wilo®

W30LC

490 RPM



IMPELLER DATA

IMPELLER NUMBER	0192	Minimum submergence above eye of bottom impeller: 60 IN.
TYPE	ENCLOSED	
THRUST FACTOR	K=67.50	
EYE AREA	175 SQ. IN.	
WEIGHT	440 LB.	

EFFICIENCY CORRECTION

NUMBER OF BOWLS:	1	2	3		
CHANGE AS FOLLOWS:	-2	0	+1		
CHANGE IN EFFICIENCY MAY AFFECT BOTH HEAD AND HORSEPOWER.					

PUMP MATERIAL EFFICIENCY CORRECTION

	DUCTILE	BRONZE	NI-R	STAINLESS
IMPELLER MATERIAL:	-1	0	-1	-1
BOWL MATERIAL:	-1	-1	-1	-2

FLANGED BOWL DATA

BOWL NUMBER	0235
BOWL MAX. DIAMETER	30.000 IN.
BOWL MIN. DIAMETER	30.000 IN.
MAX. NO. STAGES	5
ONE STAGE WEIGHT	4500 LB.
ADD STAGE WEIGHT	2000 LB.
STD. SHAFT DIA.	3.250 IN.
STD. LATERAL	1.375 IN.
DISCHARGE SIZE	N/A
DISCHARGE CONNECTION	FLG.
SUCTION BELL DIA.	33.250 IN.
SUCTION CONNECTION	BELL
MAX. SPHERE SIZE	2.500 IN
MAX. OPERATIONAL P.S.I.	250 (SPECIAL)

Performance based on pumping clean, fresh water at a temperature not over 85°F., free of gas, air or abrasives and with bowls properly adjusted and submerged. Performance curve reflects Hydraulic Institute tolerances and guidelines.

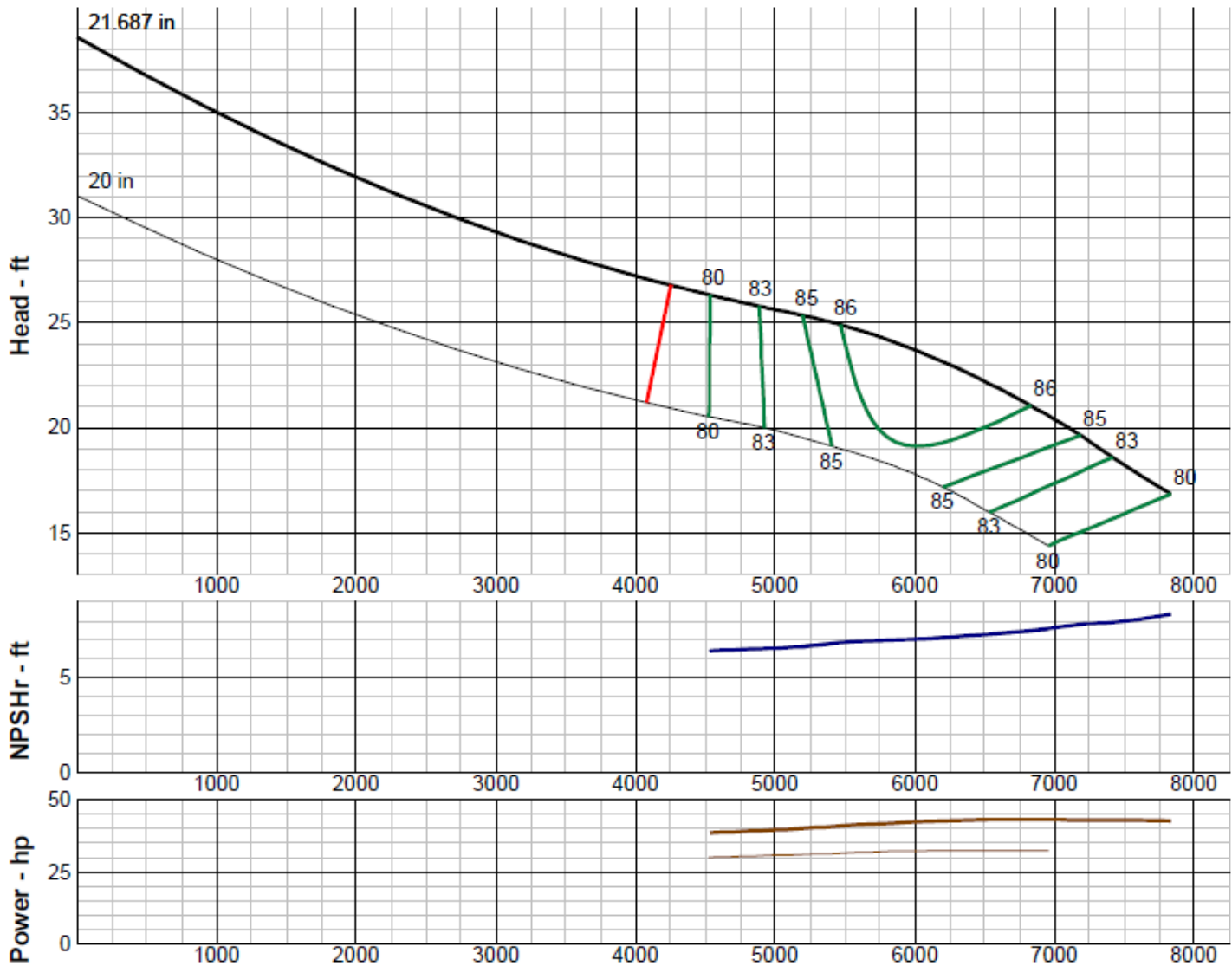
Wilo-Vertical Turbine Pump Curve

Single Stage Performance

wilo®

W30MC

490 RPM



IMPELLER DATA

IMPELLER NUMBER	0193	Minimum submergence above eye of bottom impeller: 50 IN.
TYPE	ENCLOSED	
THRUST FACTOR	K=67.50	
EYE AREA	175 SQ. IN.	
WEIGHT	440 LB.	

EFFICIENCY CORRECTION

NUMBER OF BOWLS:	1	2			
CHANGE AS FOLLOWS:	-2	0			
CHANGE IN EFFICIENCY MAY AFFECT BOTH HEAD AND HORSEPOWER.					

PUMP MATERIAL EFFICIENCY CORRECTION

	DUCTILE	BRONZE	NI-R	STAINLESS
IMPELLER MATERIAL:	-1	0	-1	-1
BOWL MATERIAL:	-1	-1	-1	-2

FLANGED BOWL DATA

BOWL NUMBER	0235
BOWL MAX. DIAMETER	30,000 IN.
BOWL MIN. DIAMETER	30,000 IN.
MAX. NO. STAGES	5
ONE STAGE WEIGHT	4500 LB.
ADD STAGE WEIGHT	2000 LB.
STD. SHAFT DIA.	3.250 IN.
STD. LATERAL	1.375 IN.
DISCHARGE SIZE	N/A
DISCHARGE CONNECTION	BELL
SUCTION BELL DIA.	33.250 IN.
SUCTION CONNECTION	BELL
MAX. SPHERE SIZE	2.500 IN
MAX. OPERATIONAL P.S.I.	250 (SPECIAL)

Performance based on pumping clean, fresh water at a temperature not over 85°F., free of gas, air or abrasives and with bowls properly adjusted and submerged. Performance curve reflects Hydraulic Institute tolerances and guidelines.

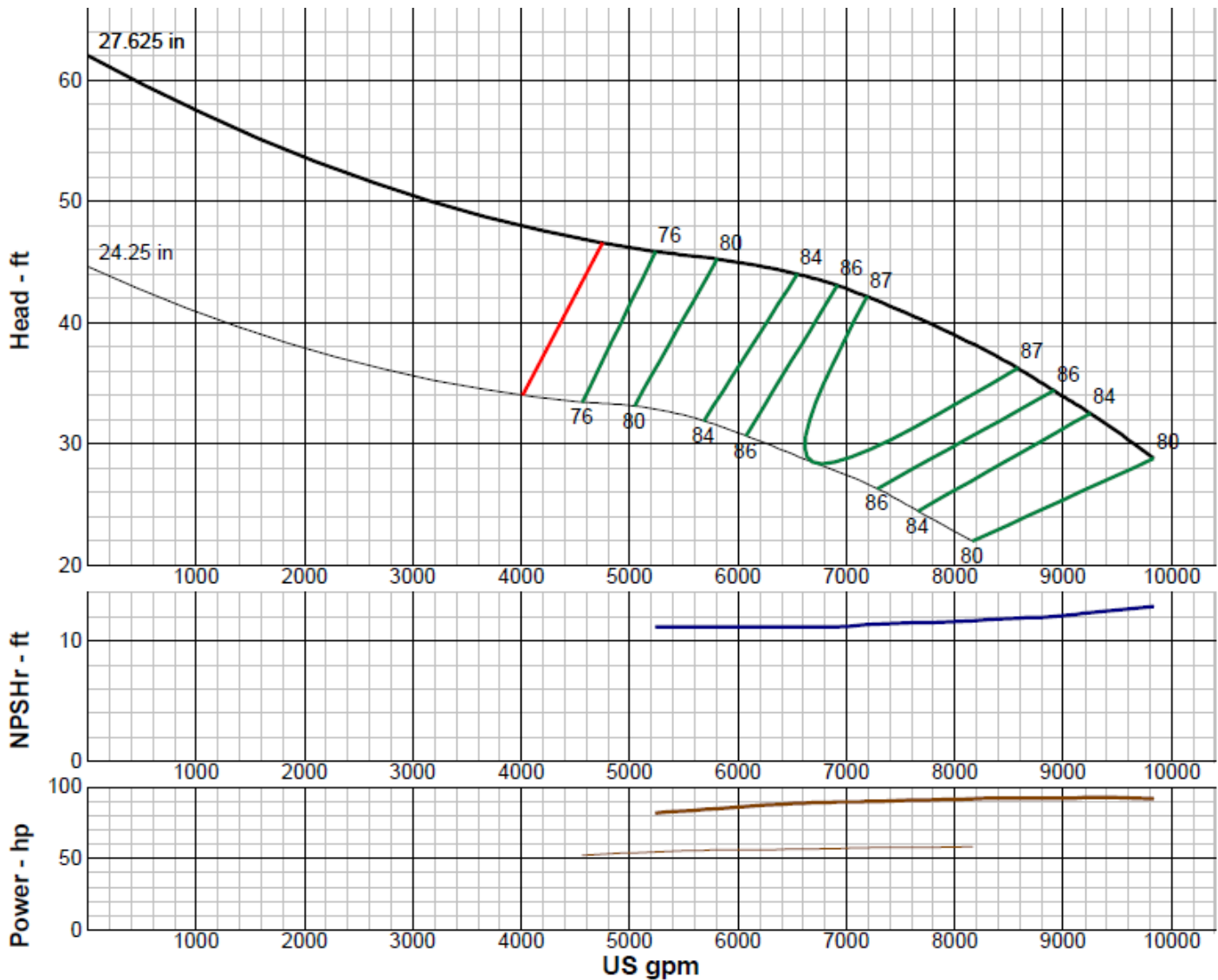
Wilo-Vertical Turbine Pump Curve

Single Stage Performance

wilo®

W36LC

490 RPM



IMPELLER DATA

IMPELLER NUMBER	1927	Minimum submergence above eye of bottom impeller: 65 IN.
TYPE	ENCLOSED	
THRUST FACTOR	K=94.50	
EYE AREA	215 SQ. IN.	
WEIGHT	440 LB.	

EFFICIENCY CORRECTION

NUMBER OF BOWLS:	1	2	3		
CHANGE AS FOLLOWS:	-2	-1	0		
CHANGE IN EFFICIENCY MAY AFFECT BOTH HEAD AND HORSEPOWER.					

PUMP MATERIAL EFFICIENCY CORRECTION

	DUCTILE	BRONZE	NI-R	STAINLESS
IMPELLER MATERIAL:	-1	0	-1	-1
BOWL MATERIAL:	-1	-1	-1	-2

FLANGED BOWL DATA

BOWL NUMBER	1909
BOWL MAX. DIAMETER	36.000 IN.
BOWL MIN. DIAMETER	36.000 IN.
MAX. NO. STAGES	2
ONE STAGE WEIGHT	4500 LB.
ADD STAGE WEIGHT	2000 LB.
STD. SHAFT DIA.	3.250 IN.
STD. LATERAL	1.250 IN.
DISCHARGE SIZE	N/A
DISCHARGE CONNECTION	FLG.
SUCTION BELL DIA.	42.000 IN.
SUCTION CONNECTION	BELL
MAX. SPHERE SIZE	2.500 IN
MAX. OPERATIONAL P.S.I.	200 (SPECIAL)

Performance based on pumping clean, fresh water at a temperature not over 85°F., free of gas, air or abrasives and with bowls properly adjusted and submerged. Performance curve reflects Hydraulic Institute tolerances and guidelines.

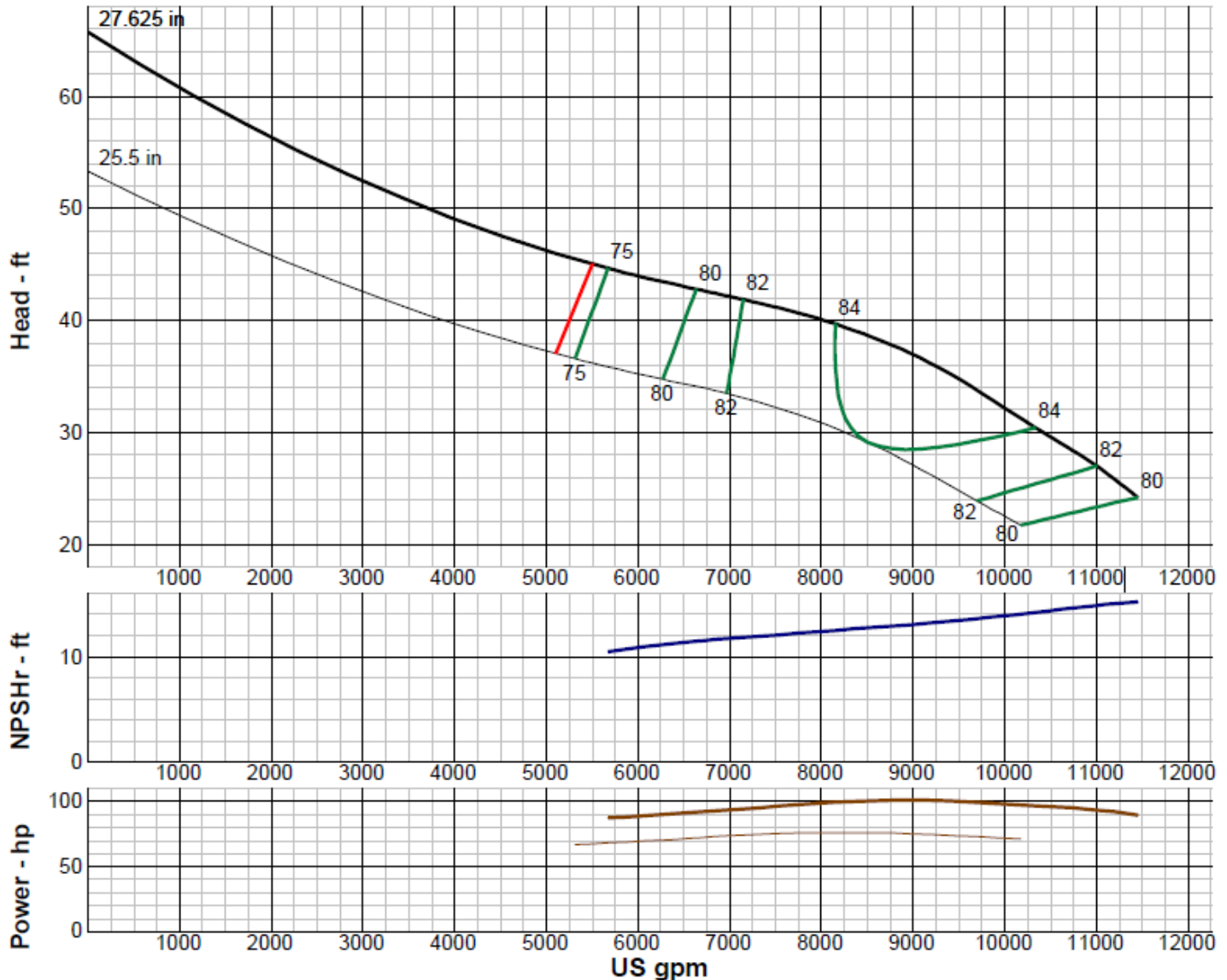
Wilo-Vertical Turbine Pump Curve

Single Stage Performance



W36MC

490 RPM



IMPELLER DATA

IMPELLER NUMBER	1936	Minimum submergence above eye of bottom impeller: 65 IN.
TYPE	ENCLOSED	
THRUST FACTOR	K=94.50	
EYE AREA	215 SQ. IN.	
WEIGHT	440 LB.	

EFFICIENCY CORRECTION

NUMBER OF BOWLS:	1	2	3		
CHANGE AS FOLLOWS:	-2	-1	0		
CHANGE IN EFFICIENCY MAY AFFECT BOTH HEAD AND HORSEPOWER.					

PUMP MATERIAL EFFICIENCY CORRECTION

	DUCTILE	BRONZE	NI-R	STAINLESS
IMPELLER MATERIAL:	-1	0	-1	-1
BOWL MATERIAL:	-1	-1	-1	-2

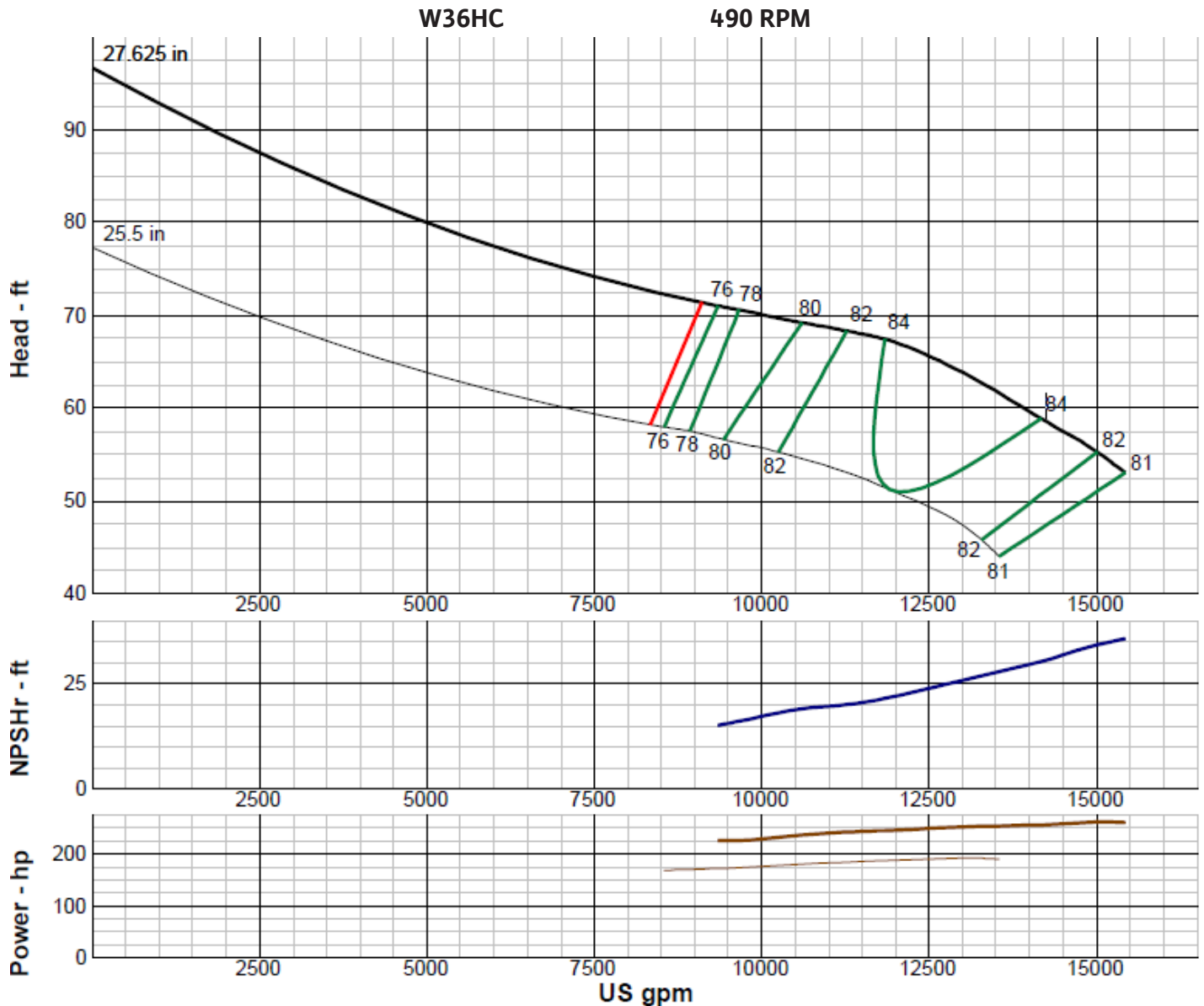
FLANGED BOWL DATA

BOWL NUMBER	1909
BOWL MAX. DIAMETER	36.000 IN.
BOWL MIN. DIAMETER	36.000 IN.
MAX. NO. STAGES	2
ONE STAGE WEIGHT	4500 LB.
ADD STAGE WEIGHT	2000 LB.
STD. SHAFT DIA.	3.250 IN.
STD. LATERAL	1.250 IN.
DISCHARGE SIZE	N/A
DISCHARGE CONNECTION	FLG.
SUCTION BELL DIA.	42.000 IN.
SUCTION CONNECTION	BELL
MAX. SPHERE SIZE	2.500 IN
MAX. OPERATIONAL P.S.I.	200 (SPECIAL)

Performance based on pumping clean, fresh water at a temperature not over 85°F., free of gas, air or abrasives and with bowls properly adjusted and submerged. Performance curve reflects Hydraulic Institute tolerances and guidelines.

Wilo-Vertical Turbine Pump Curve

Single Stage Performance



IMPELLER DATA		
IMPELLER NUMBER	1945	Minimum submergence above eye of bottom impeller: 65 IN.
TYPE	ENCLOSED	
THRUST FACTOR	K=94.50	
EYE AREA	215 SQ. IN.	
WEIGHT	440 LB.	

EFFICIENCY CORRECTION					
NUMBER OF BOWLS:	1	2	3		
CHANGE AS FOLLOWS:	-2	-1	0		
CHANGE IN EFFICIENCY MAY AFFECT BOTH HEAD AND HORSEPOWER.					

PUMP MATERIAL EFFICIENCY CORRECTION				
	DUCTILE	BRONZE	NI-R	STAINLESS
IMPELLER MATERIAL:	-1	0	-1	-1
BOWL MATERIAL:	-1	-1	-1	-2

FLANGED BOWL DATA	
BOWL NUMBER	1909
BOWL MAX. DIAMETER	36.000 IN.
BOWL MIN. DIAMETER	36.000 IN.
MAX. NO. STAGES	2
ONE STAGE WEIGHT	4500 LB.
ADD STAGE WEIGHT	2000 LB.
STD. SHAFT DIA.	3.250 IN.
STD. LATERAL	1.250 IN.
DISCHARGE SIZE	N/A
DISCHARGE CONNECTION	FLG.
SUCTION BELL DIA.	42.000 IN.
SUCTION CONNECTION	BELL
MAX. SPHERE SIZE	2.500 IN
MAX. OPERATIONAL P.S.I.	200 (SPECIAL)

Performance based on pumping clean, fresh water at a temperature not over 85°F., free of gas, air or abrasives and with bowls properly adjusted and submerged. Performance curve reflects Hydraulic Institute tolerances and guidelines.

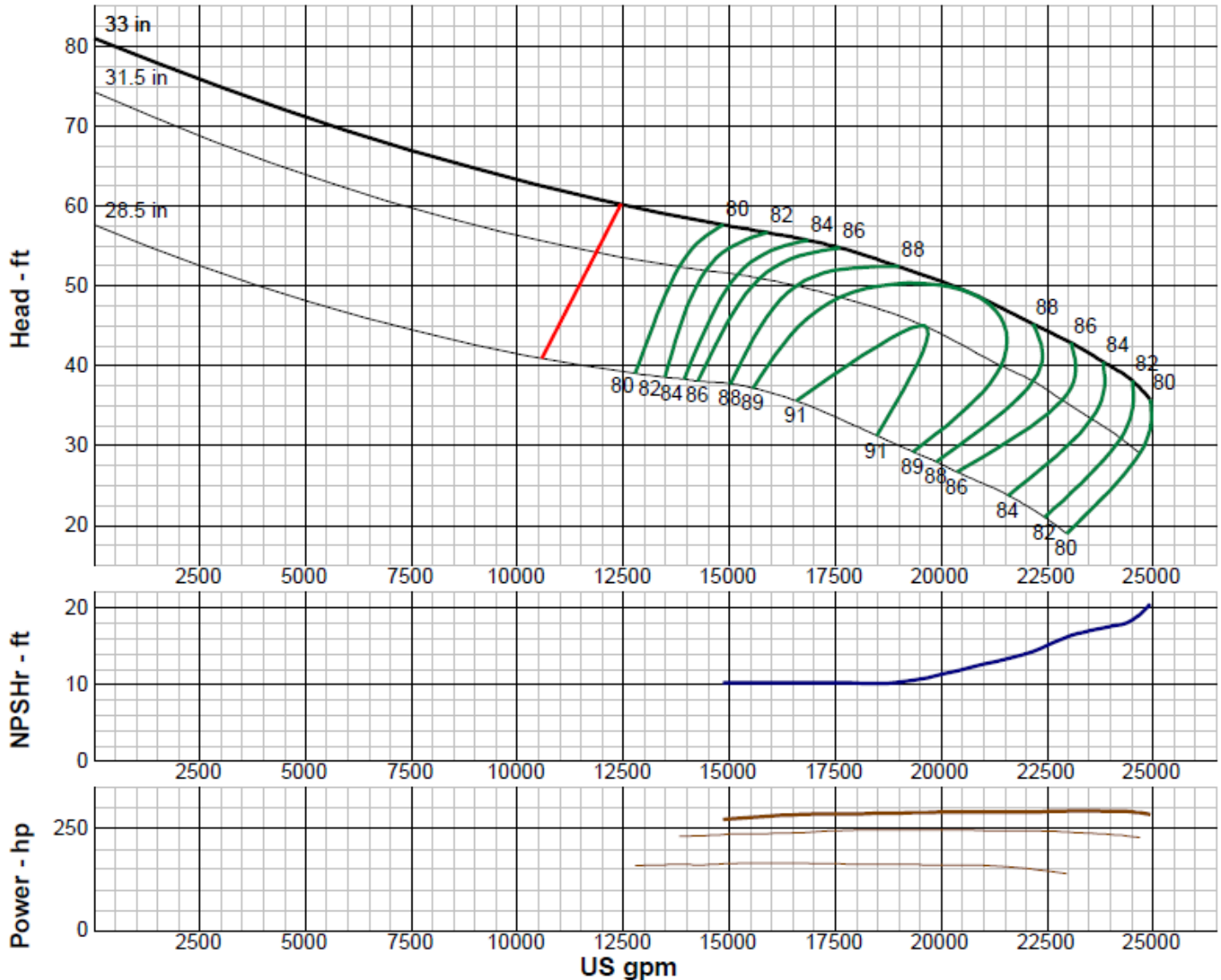
Wilo-Vertical Turbine Pump Curve

Single Stage Performance



W42MC

490 RPM



IMPELLER DATA

IMPELLER NUMBER	0244	Minimum submergence above eye of bottom impeller: 90 IN.
TYPE	ENCLOSED	
THRUST FACTOR	K=150.00	
EYE AREA	390 SQ. IN.	
WEIGHT	875 LB.	

EFFICIENCY CORRECTION

NUMBER OF BOWLS:	1	2			
CHANGE AS FOLLOWS:	-1	0			
CHANGE IN EFFICIENCY MAY AFFECT BOTH HEAD AND HORSEPOWER.					

PUMP MATERIAL EFFICIENCY CORRECTION

	DUCTILE	BRONZE	NI-R	STAINLESS
IMPELLER MATERIAL:	-1	0	-1	-1
BOWL MATERIAL:	-1	-1	-1	-2

FLANGED BOWL DATA

BOWL NUMBER	0242
BOWL MAX. DIAMETER	42.500 IN.
BOWL MIN. DIAMETER	42.500 IN.
MAX. NO. STAGES	3
ONE STAGE WEIGHT	5250 LB.
ADD STAGE WEIGHT	3550 LB.
STD. SHAFT DIA.	4.000 IN.
STD. LATERAL	1.125 IN.
DISCHARGE SIZE	N/A
DISCHARGE CONNECTION	FLG.
SUCTION BELL DIA.	48.000 IN.
SUCTION CONNECTION	BELL
MAX. SPHERE SIZE	3.500 IN
MAX. OPERATIONAL P.S.I.	200 (SPECIAL)

Performance based on pumping clean, fresh water at a temperature not over 85°F., free of gas, air or abrasives and with bowls properly adjusted and submerged. Performance curve reflects Hydraulic Institute tolerances and guidelines.

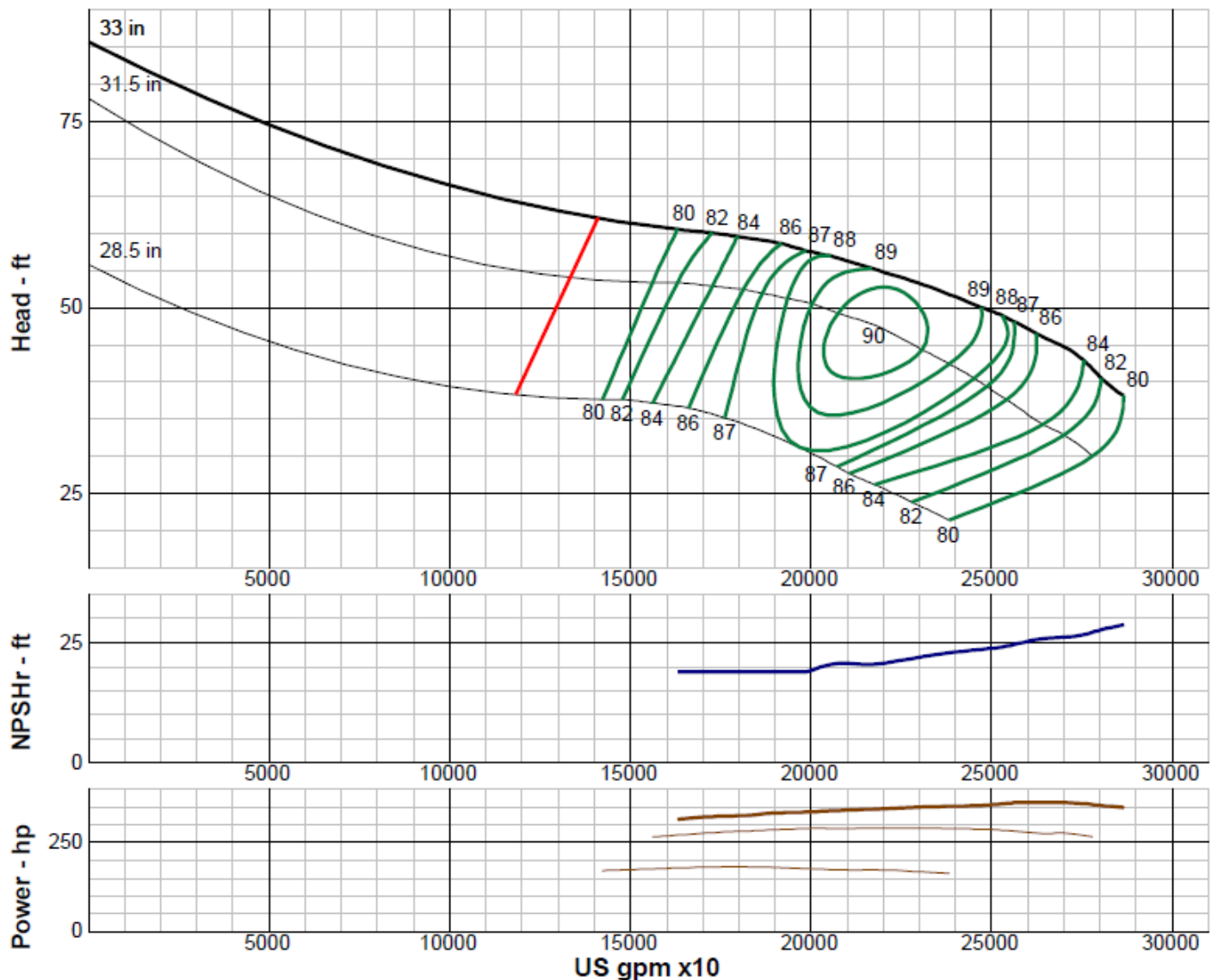
Wilo-Vertical Turbine Pump Curve

Single Stage Performance

wilo®

W42HC

490 RPM



IMPELLER DATA

IMPELLER NUMBER	0244	Minimum submergence above eye of bottom impeller: 90 IN.
TYPE	ENCLOSED	
THRUST FACTOR	K=150.00	
EYE AREA	390 SQ. IN.	
WEIGHT	875 LB.	

EFFICIENCY CORRECTION

NUMBER OF BOWLS:	1	2			
CHANGE AS FOLLOWS:	-1	0			
CHANGE IN EFFICIENCY MAY AFFECT BOTH HEAD AND HORSEPOWER.					

PUMP MATERIAL EFFICIENCY CORRECTION

	DUCTILE	BRONZE	NI-R	STAINLESS
IMPELLER MATERIAL:	-1	0	-1	-1
BOWL MATERIAL:	-1	-1	-1	-2

FLANGED BOWL DATA

BOWL NUMBER	0242
BOWL MAX. DIAMETER	42.500 IN.
BOWL MIN. DIAMETER	42.500 IN.
MAX. NO. STAGES	3
ONE STAGE WEIGHT	5250 LB.
ADD STAGE WEIGHT	3550 LB.
STD. SHAFT DIA.	4.000 IN.
STD. LATERAL	1.125 IN.
DISCHARGE SIZE	N/A
DISCHARGE CONNECTION	FLG.
SUCTION BELL DIA.	48.000 IN.
SUCTION CONNECTION	BELL
MAX. SPHERE SIZE	3.500 IN
MAX. OPERATIONAL P.S.I.	200 (SPECIAL)

Performance based on pumping clean, fresh water at a temperature not over 85°F., free of gas, air or abrasives and with bowls properly adjusted and submerged. Performance curve reflects Hydraulic Institute tolerances and guidelines.