

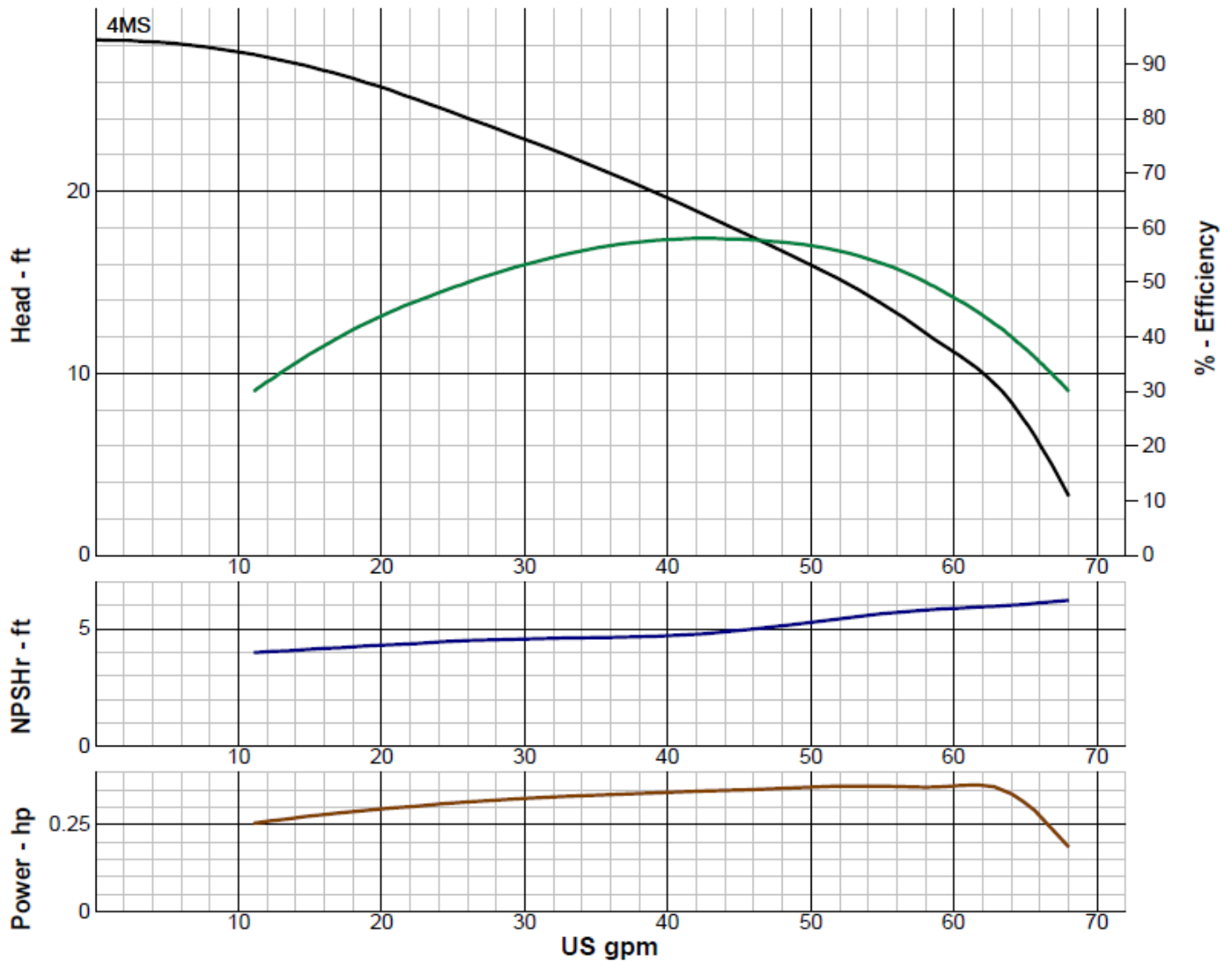
Wilo-Vertical Turbine Pump Curve

Single Stage Performance

wilo®

W4MS

3450 RPM



IMPELLER DATA

IMPELLER NUMBER	3607	Minimum submergence above eye of bottom impeller: 7 IN.
TYPE	SEMI-OPEN	
THRUST FACTOR	K=1.56	
EYE AREA	2.46 SQ. IN.	
WEIGHT	1.00 LB.	

EFFICIENCY CORRECTION

NUMBER OF BOWLS:	1	2	3	4	
CHANGE AS FOLLOWS:	-3	-2	-1	0	
CHANGE IN EFFICIENCY MAY AFFECT BOTH HEAD AND HORSEPOWER.					

PUMP MATERIAL EFFICIENCY CORRECTION

	DUCTILE	BRONZE	NI-R	STAINLESS
IMPELLER MATERIAL:	-1	0	-1	-4
BOWL MATERIAL:	-1	-1	-1	-8

FLANGED BOWL DATA

BOWL NUMBER	3031
BOWL MAX. DIAMETER	3.625 IN.
BOWL MIN. DIAMETER	3.625 IN.
MAX. NO. STAGES	12
ONE STAGE WEIGHT	35 LB.
ADD STAGE WEIGHT	10 LB.
STD. SHAFT DIA.	0.750 IN.
STD. LATERAL	0.375 IN.
DISCHARGE SIZE	2.50 - 3.00 IN.
SUCTION CONNECTION	THD.
MAX. SPHERE SIZE	0.125
MAX. OPERATIONAL P.S.I.	360 (SPECIAL)

Performance based on pumping clean, fresh water at a temperature not over 85°F., free of gas, air or abrasives and with bowls properly adjusted and submerged. Performance curve reflects Hydraulic Institute tolerances and guidelines.

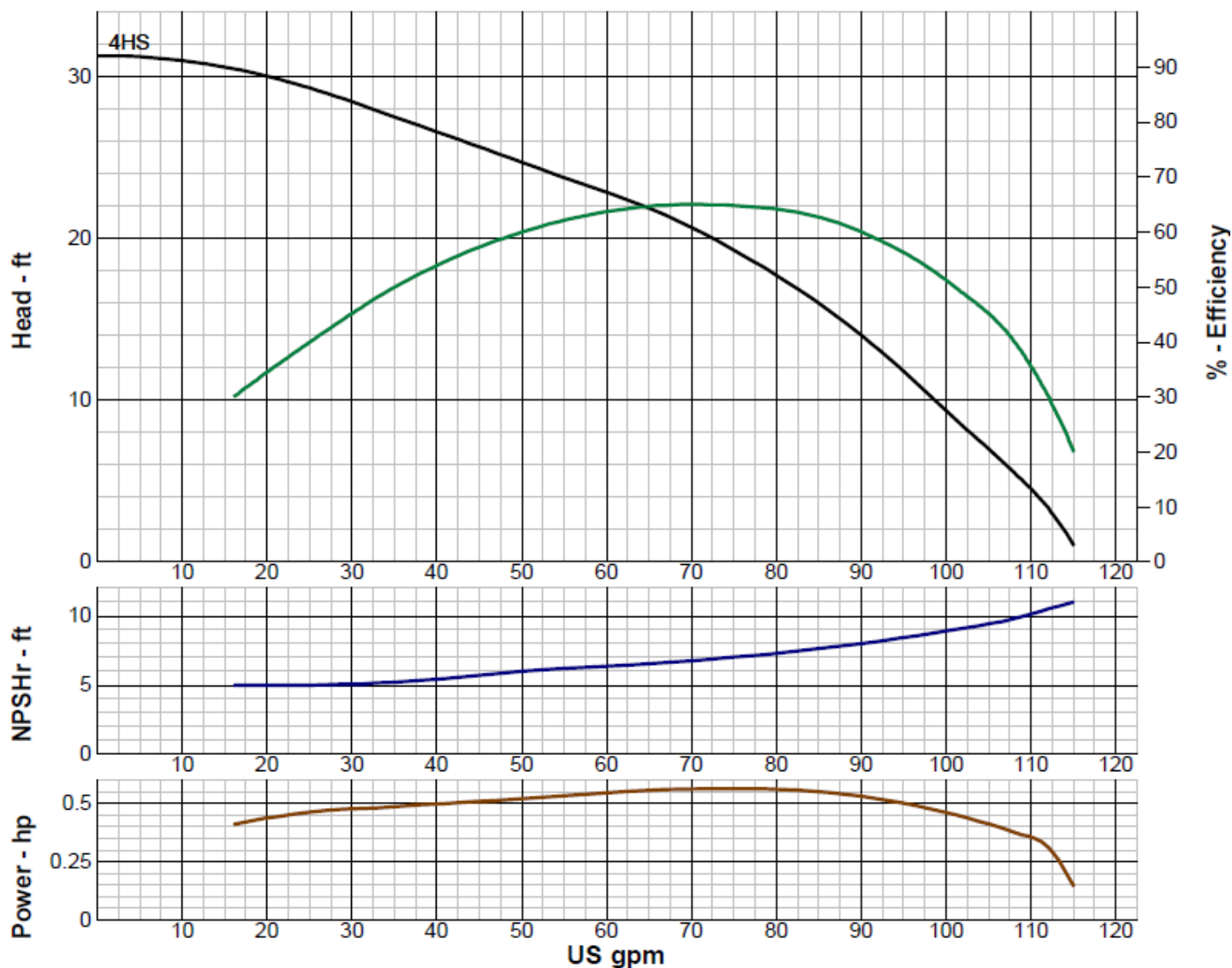
Wilo-Vertical Turbine Pump Curve

Single Stage Performance



W4HS

3450 RPM



IMPELLER DATA

IMPELLER NUMBER	3607	Minimum submergence above eye of bottom impeller: 7 IN.
TYPE	SEMI-OPEN	
THRUST FACTOR	K=1.50	
EYE AREA	2.46 SQ. IN.	
WEIGHT	1.00 LB.	

EFFICIENCY CORRECTION

NUMBER OF BOWLS:	1	2	3	4	
CHANGE AS FOLLOWS:	-3	-2	-1	0	
CHANGE IN EFFICIENCY MAY AFFECT BOTH HEAD AND HORSEPOWER.					

PUMP MATERIAL EFFICIENCY CORRECTION

	DUCTILE	BRONZE	NI-R	STAINLESS
IMPELLER MATERIAL:	-1	0	-1	-4
BOWL MATERIAL:	-1	-1	-1	-8

FLANGED BOWL DATA

BOWL NUMBER	3031
BOWL MAX. DIAMETER	3.625 IN.
BOWL MIN. DIAMETER	3.625 IN.
MAX. NO. STAGES	12
ONE STAGE WEIGHT	35 LB.
ADD STAGE WEIGHT	10 LB.
STD. SHAFT DIA.	0.750 IN.
STD. LATERAL	0.375 IN.
DISCHARGE SIZE	2.50 - 3.00 IN.
SUCTION CONNECTION	THD.
MAX. SPHERE SIZE	0.125
MAX. OPERATIONAL P.S.I.	360 (SPECIAL)

Performance based on pumping clean, fresh water at a temperature not over 85°F., free of gas, air or abrasives and with bowls properly adjusted and submerged. Performance curve reflects Hydraulic Institute tolerances and guidelines.

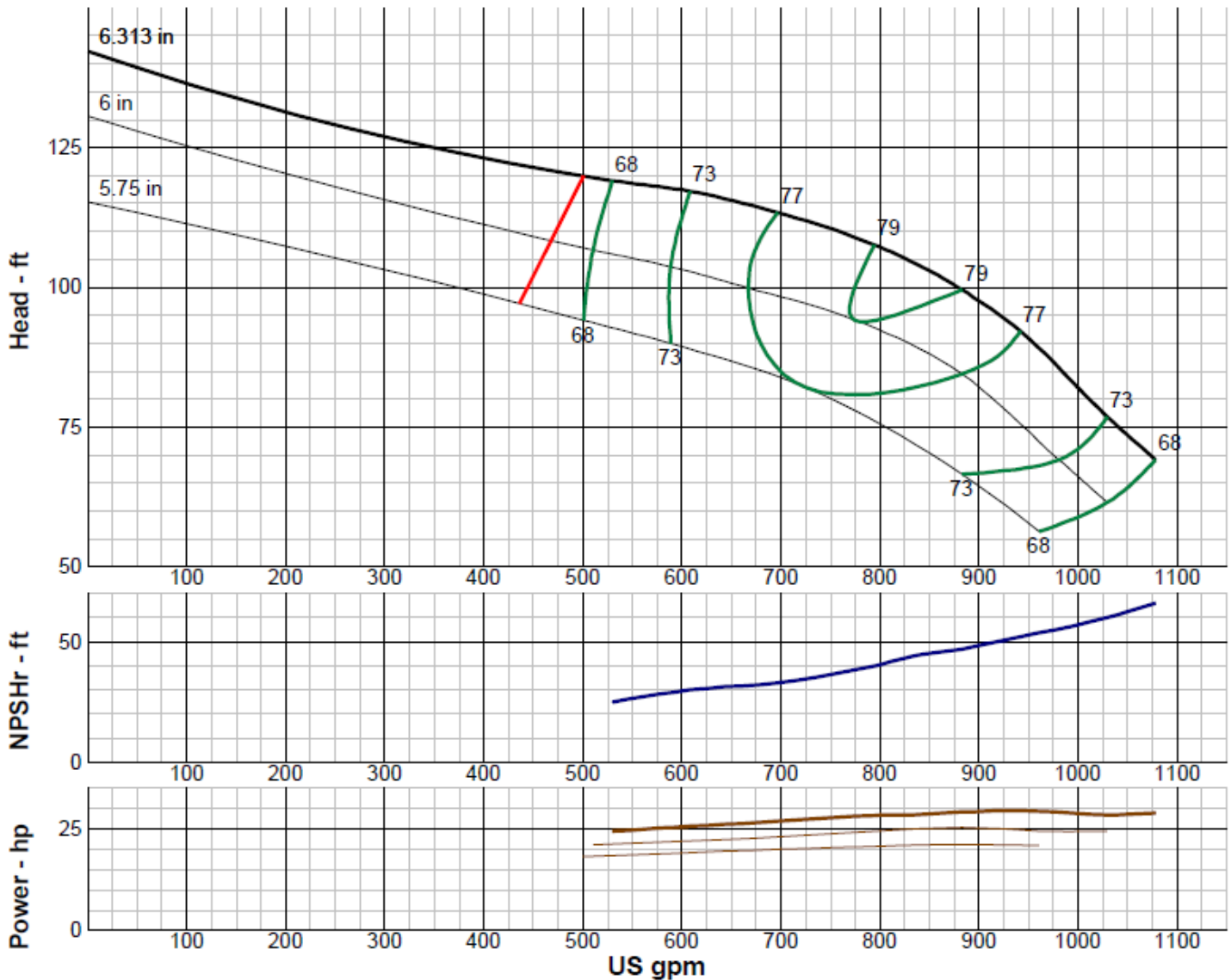
Wilo-Vertical Turbine Pump Curve

Single Stage Performance

wilo®

W8EHS

3450 RPM



IMPELLER DATA

IMPELLER NUMBER	2981	Minimum submergence above eye of bottom impeller: 24 IN.
TYPE	SEMI-OPEN	
THRUST FACTOR	K=5.40	
EYE AREA	8.48 SQ. IN.	
WEIGHT	3.25 LB.	

EFFICIENCY CORRECTION

NUMBER OF BOWLS:	1	2	3	4	
CHANGE AS FOLLOWS:	-3	-2	-1	0	
CHANGE IN EFFICIENCY MAY AFFECT BOTH HEAD AND HORSEPOWER.					

PUMP MATERIAL EFFICIENCY CORRECTION

	DUCTILE	BRONZE	NI-R	STAINLESS
IMPELLER MATERIAL:	-2	0	-1	-5
BOWL MATERIAL:	-2	-2	-2	-4

FLANGED BOWL DATA

BOWL NUMBER	2883
BOWL MAX. DIAMETER	7.938 IN.
BOWL MIN. DIAMETER	7.500 IN.
MAX. NO. STAGES	5
ONE STAGE WEIGHT	130 LB.
ADD STAGE WEIGHT	30 LB.
STD. SHAFT DIA.	1.188 IN.
STD. LATERAL	0.375 IN.
DISCHARGE SIZE	5 - 6 IN.
SUCTION CONNECTION	THD.
MAX. SPHERE SIZE	0.625
MAX. OPERATIONAL P.S.I.	692 (SPECIAL)

Performance based on pumping clean, fresh water at a temperature not over 85°F., free of gas, air or abrasives and with bowls properly adjusted and submerged. Performance curve reflects Hydraulic Institute tolerances and guidelines.

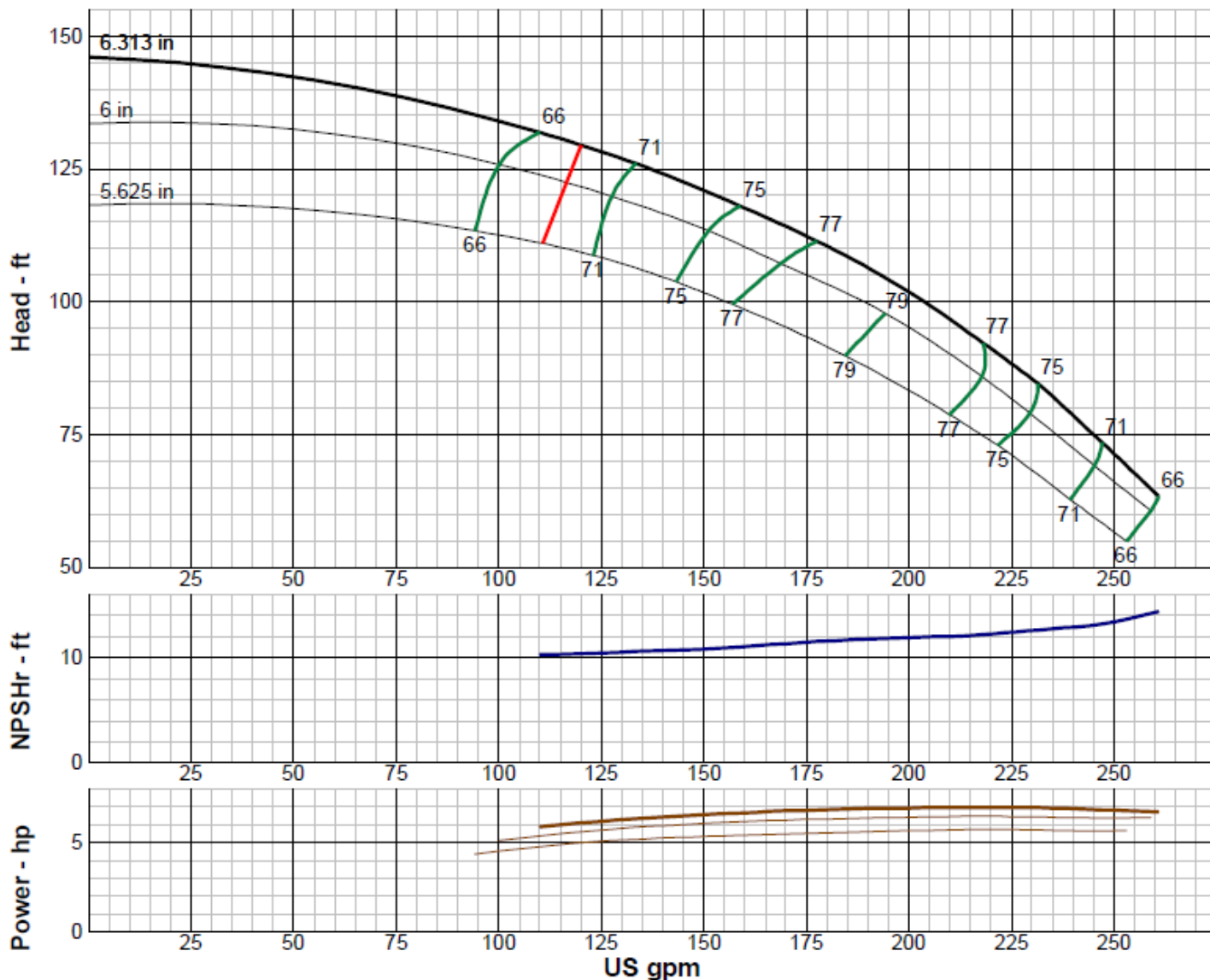
Wilo-Vertical Turbine Pump Curve

Single Stage Performance

wilo®

W8JS

3450 RPM



IMPELLER DATA

IMPELLER NUMBER	3692	Minimum submergence above eye of bottom impeller: 18 IN.
TYPE	SEMI-OPEN	
THRUST FACTOR	K=3.52	
EYE AREA	3.18 SQ. IN.	
WEIGHT	3.55 LB.	

EFFICIENCY CORRECTION

NUMBER OF BOWLS:	1	2	3	4	
CHANGE AS FOLLOWS:	-4	-2	0	0	
CHANGE IN EFFICIENCY MAY AFFECT BOTH HEAD AND HORSEPOWER.					

PUMP MATERIAL EFFICIENCY CORRECTION

	DUCTILE	BRONZE	NI-R	STAINLESS
IMPELLER MATERIAL:	-2	0	-1	-5
BOWL MATERIAL:	-2	-2	-2	-4

FLANGED BOWL DATA

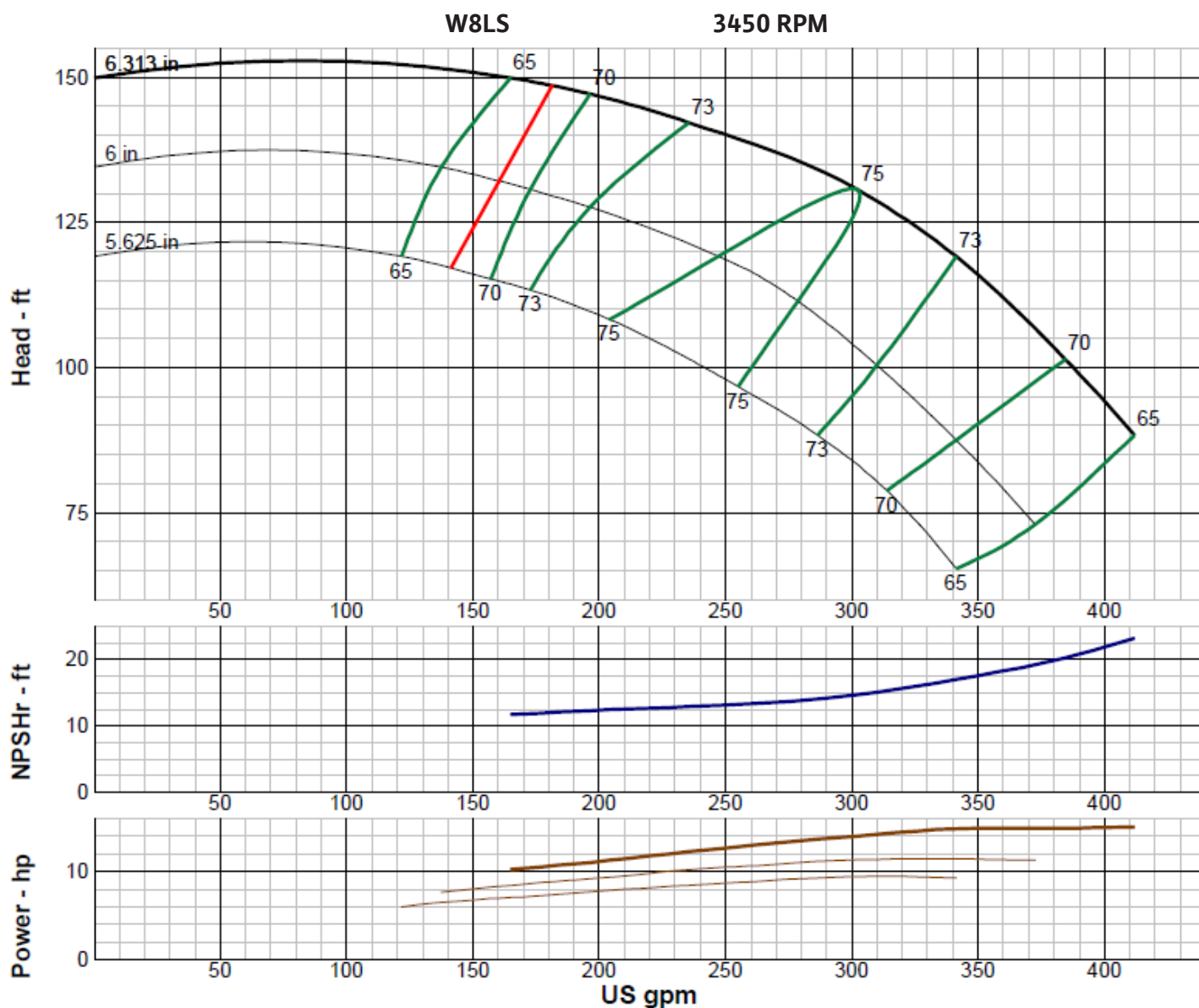
BOWL NUMBER	3629
BOWL MAX. DIAMETER	7.813 IN.
BOWL MIN. DIAMETER	7.500 IN.
MAX. NO. STAGES	15
ONE STAGE WEIGHT	130 LB.
ADD STAGE WEIGHT	30 LB.
STD. SHAFT DIA.	1.000 IN.
STD. LATERAL	0.438 IN.
DISCHARGE SIZE	5 - 6 IN.
SUCTION CONNECTION	THD.
MAX. SPHERE SIZE	0.250
MAX. OPERATIONAL P.S.I.	692 (SPECIAL)

Performance based on pumping clean, fresh water at a temperature not over 85°F., free of gas, air or abrasives and with bowls properly adjusted and submerged. Performance curve reflects Hydraulic Institute tolerances and guidelines.

Wilo-Vertical Turbine Pump Curve

Single Stage Performance

wilo®



IMPELLER DATA

IMPELLER NUMBER	3641	Minimum submergence above eye of bottom impeller: 18 IN.
TYPE	SEMI-OPEN	
THRUST FACTOR	K=3.34	
EYE AREA	4.64 SQ. IN.	
WEIGHT	4.25 LB.	

EFFICIENCY CORRECTION

NUMBER OF BOWLS:	1	2	3	4	
CHANGE AS FOLLOWS:	-4	-2	0	0	
CHANGE IN EFFICIENCY MAY AFFECT BOTH HEAD AND HORSEPOWER.					

PUMP MATERIAL EFFICIENCY CORRECTION

	DUCTILE	BRONZE	NI-R	STAINLESS
IMPELLER MATERIAL:	-2	0	-1	-5
BOWL MATERIAL:	-2	-2	-2	-4

FLANGED BOWL DATA

BOWL NUMBER	3629
BOWL MAX. DIAMETER	7.813 IN.
BOWL MIN. DIAMETER	7.500 IN.
MAX. NO. STAGES	12
ONE STAGE WEIGHT	130 LB.
ADD STAGE WEIGHT	30 LB.
STD. SHAFT DIA.	1.000 IN.
STD. LATERAL	0.438 IN.
DISCHARGE SIZE	5 - 6 IN.
SUCTION CONNECTION	THD.
MAX. SPHERE SIZE	0.250
MAX. OPERATIONAL P.S.I.	692 (SPECIAL)

Performance based on pumping clean, fresh water at a temperature not over 85°F., free of gas, air or abrasives and with bowls properly adjusted and submerged. Performance curve reflects Hydraulic Institute tolerances and guidelines.

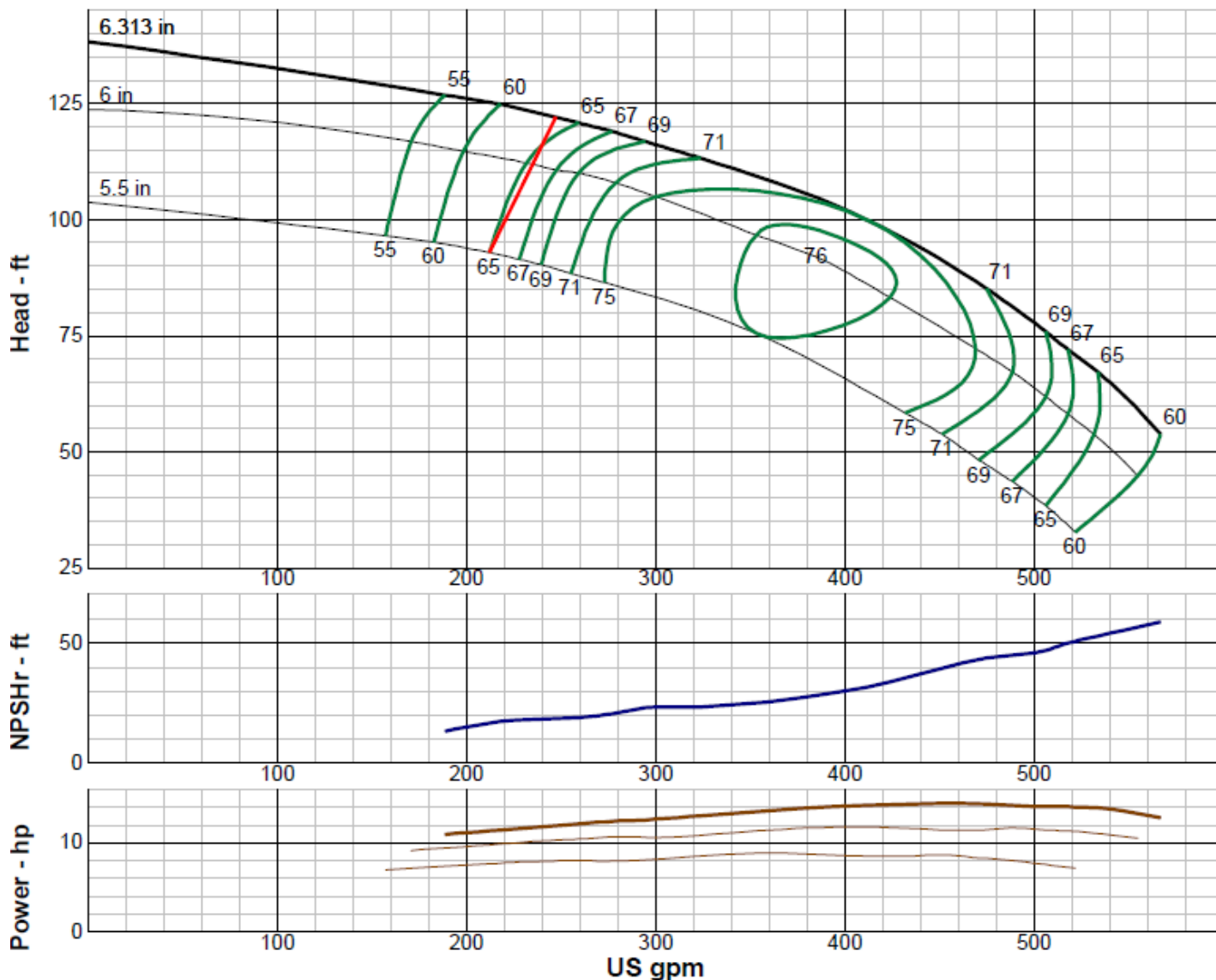
Wilo-Vertical Turbine Pump Curve

Single Stage Performance

wilo®

W8KS

3450 RPM



IMPELLER DATA

IMPELLER NUMBER	3693	Minimum submergence above eye of bottom impeller: 20 IN.
TYPE	SEMI-OPEN	
THRUST FACTOR	K=4.42	
EYE AREA	6.60 SQ. IN.	
WEIGHT	3.75 LB.	

EFFICIENCY CORRECTION

NUMBER OF BOWLS:	1	2	3		
CHANGE AS FOLLOWS:	-4	-2	0		
CHANGE IN EFFICIENCY MAY AFFECT BOTH HEAD AND HORSEPOWER.					

PUMP MATERIAL EFFICIENCY CORRECTION

	DUCTILE	BRONZE	NI-R	STAINLESS
IMPELLER MATERIAL:	-2	0	-1	-5
BOWL MATERIAL:	-2	-2	-2	-4

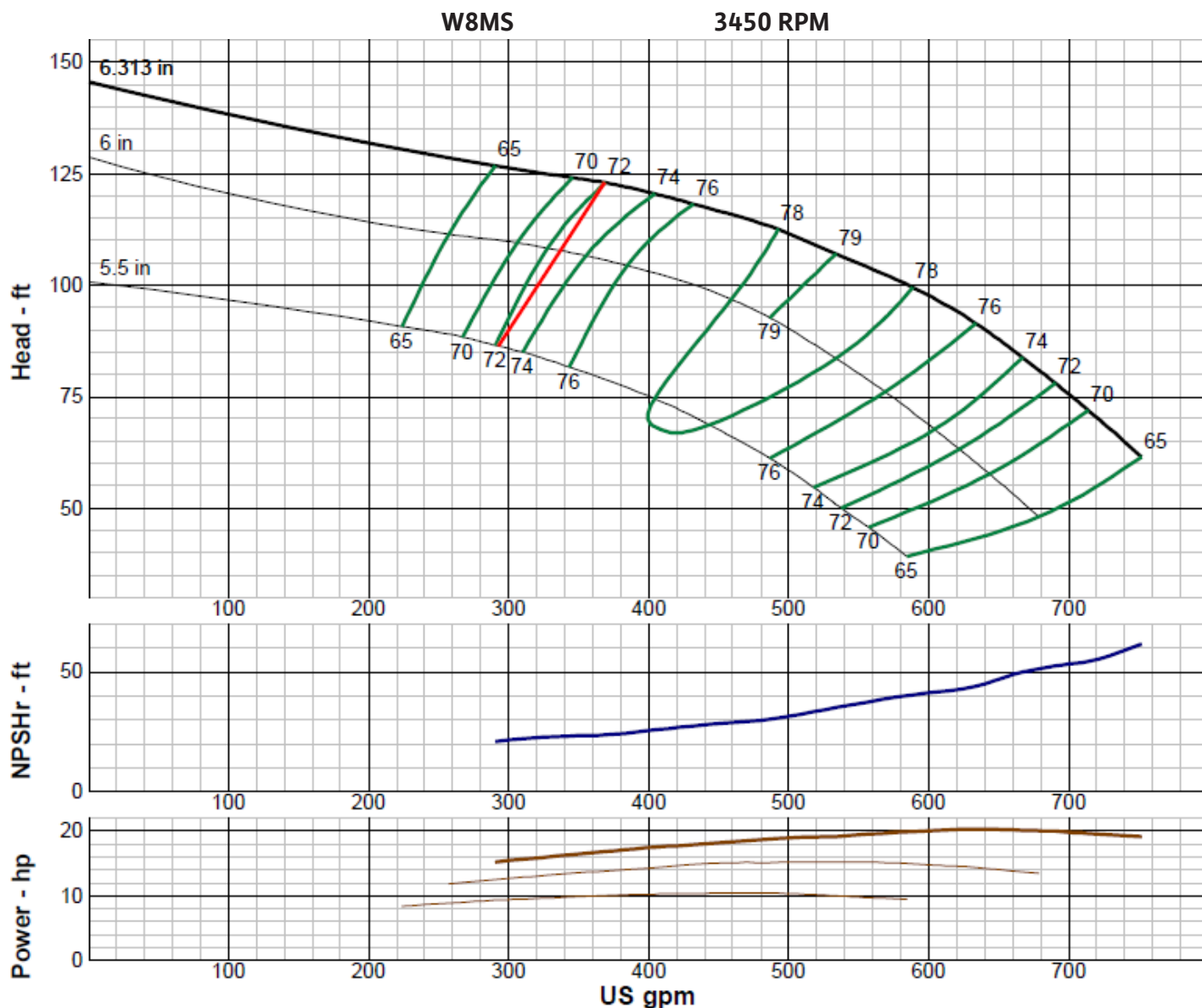
FLANGED BOWL DATA

BOWL NUMBER	3591
BOWL MAX. DIAMETER	7.938 IN.
BOWL MIN. DIAMETER	7.500 IN.
MAX. NO. STAGES	10
ONE STAGE WEIGHT	130 LB.
ADD STAGE WEIGHT	30 LB.
STD. SHAFT DIA.	1.000 IN.
STD. LATERAL	0.438 IN.
DISCHARGE SIZE	5 - 6 IN.
SUCTION CONNECTION	THD.
MAX. SPHERE SIZE	0.375
MAX. OPERATIONAL P.S.I.	692 (SPECIAL)

Performance based on pumping clean, fresh water at a temperature not over 85°F., free of gas, air or abrasives and with bowls properly adjusted and submerged. Performance curve reflects Hydraulic Institute tolerances and guidelines.

Wilo-Vertical Turbine Pump Curve

Single Stage Performance



IMPELLER DATA

IMPELLER NUMBER	3590	Minimum submergence above eye of bottom impeller: 24 IN.
TYPE	SEMI-OPEN	
THRUST FACTOR	K=4.28	
EYE AREA	6.60 SQ. IN.	
WEIGHT	4.125 LB.	

EFFICIENCY CORRECTION

NUMBER OF BOWLS:	1	2	3	4	5
CHANGE AS FOLLOWS:	-4	-3	-2	-1	0
CHANGE IN EFFICIENCY MAY AFFECT BOTH HEAD AND HORSEPOWER.					

PUMP MATERIAL EFFICIENCY CORRECTION

	DUCTILE	BRONZE	NI-R	STAINLESS
IMPELLER MATERIAL:	-2	0	-1	-5
BOWL MATERIAL:	-2	-2	-2	-4

FLANGED BOWL DATA

BOWL NUMBER	3591
BOWL MAX. DIAMETER	7.938 IN.
BOWL MIN. DIAMETER	7.500 IN.
MAX. NO. STAGES	7
ONE STAGE WEIGHT	130 LB.
ADD STAGE WEIGHT	30 LB.
STD. SHAFT DIA.	1.000 IN.
STD. LATERAL	0.438 IN.
DISCHARGE SIZE	5 - 6 IN.
SUCTION CONNECTION	THD.
MAX. SPHERE SIZE	0.375
MAX. OPERATIONAL P.S.I.	692 (SPECIAL)

Performance based on pumping clean, fresh water at a temperature not over 85°F., free of gas, air or abrasives and with bowls properly adjusted and submerged. Performance curve reflects Hydraulic Institute tolerances and guidelines.

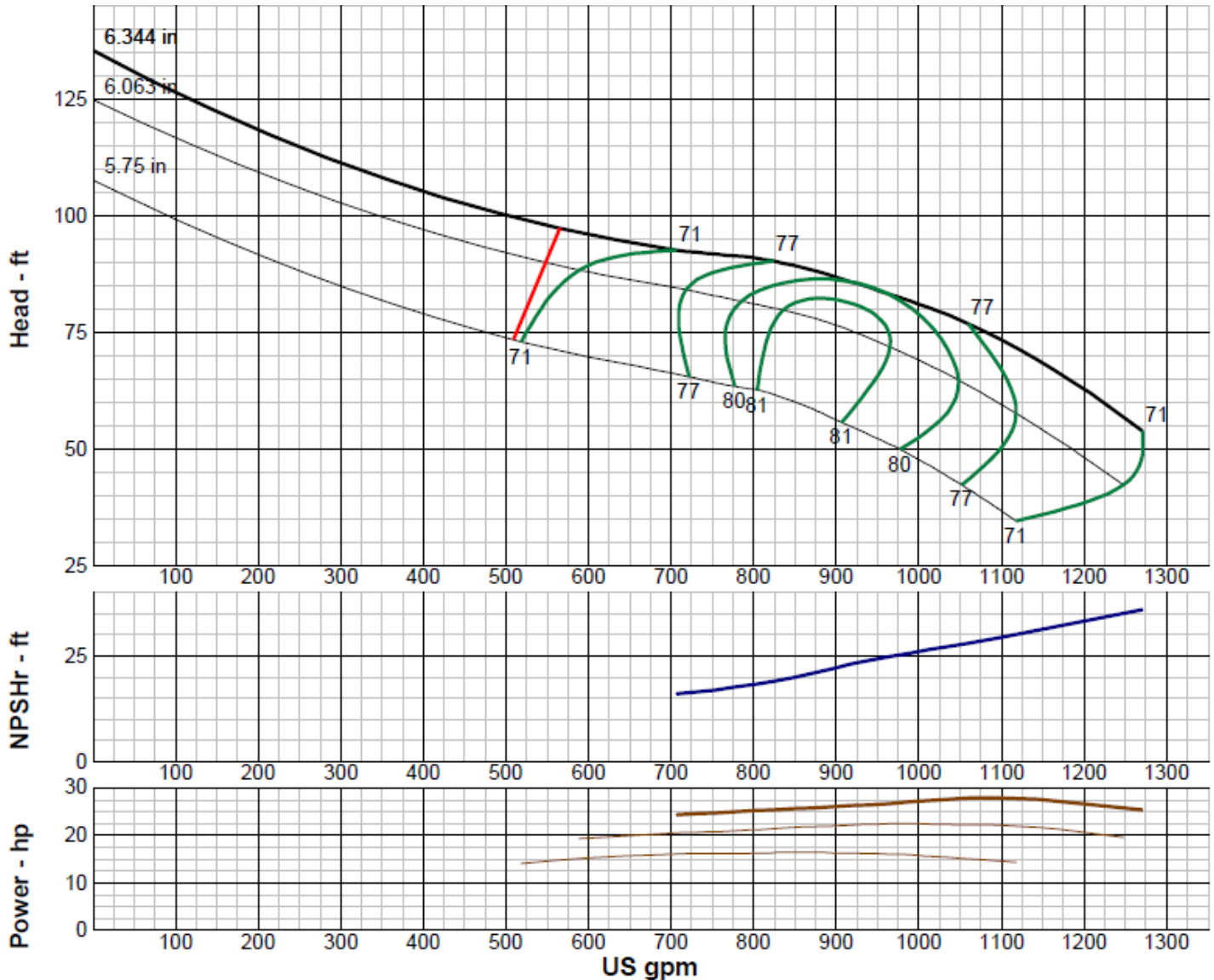
Wilo-Vertical Turbine Pump Curve

Single Stage Performance

wilo®

W8YS

3450 RPM



IMPELLER DATA

IMPELLER NUMBER	5506	Minimum submergence above eye of bottom impeller: 30 IN.
TYPE	SEMI-OPEN	
THRUST FACTOR	K=8.00	
EYE AREA	15.9 SQ. IN.	
WEIGHT	5.00 LB.	

EFFICIENCY CORRECTION

NUMBER OF BOWLS:	1	2	3	4	
CHANGE AS FOLLOWS:	-3	-2	-1	0	
CHANGE IN EFFICIENCY MAY AFFECT BOTH HEAD AND HORSEPOWER.					

PUMP MATERIAL EFFICIENCY CORRECTION

	DUCTILE	BRONZE	NI-R	STAINLESS
IMPELLER MATERIAL:	-2	0	-1	-5
BOWL MATERIAL:	-2	-2	-2	-4

FLANGED BOWL DATA

BOWL NUMBER	5503
BOWL MAX. DIAMETER	7.938 IN.
BOWL MIN. DIAMETER	7.500 IN.
MAX. NO. STAGES	9
ONE STAGE WEIGHT	139 LB.
ADD STAGE WEIGHT	39 LB.
STD. SHAFT DIA.	1.188 IN.
STD. LATERAL	0.375 IN.
DISCHARGE SIZE	5 - 6 IN.
SUCTION CONNECTION	THD.
MAX. SPHERE SIZE	1.125
MAX. OPERATIONAL P.S.I.	692 (SPECIAL)

Performance based on pumping clean, fresh water at a temperature not over 85°F., free of gas, air or abrasives and with bowls properly adjusted and submerged. Performance curve reflects Hydraulic Institute tolerances and guidelines.

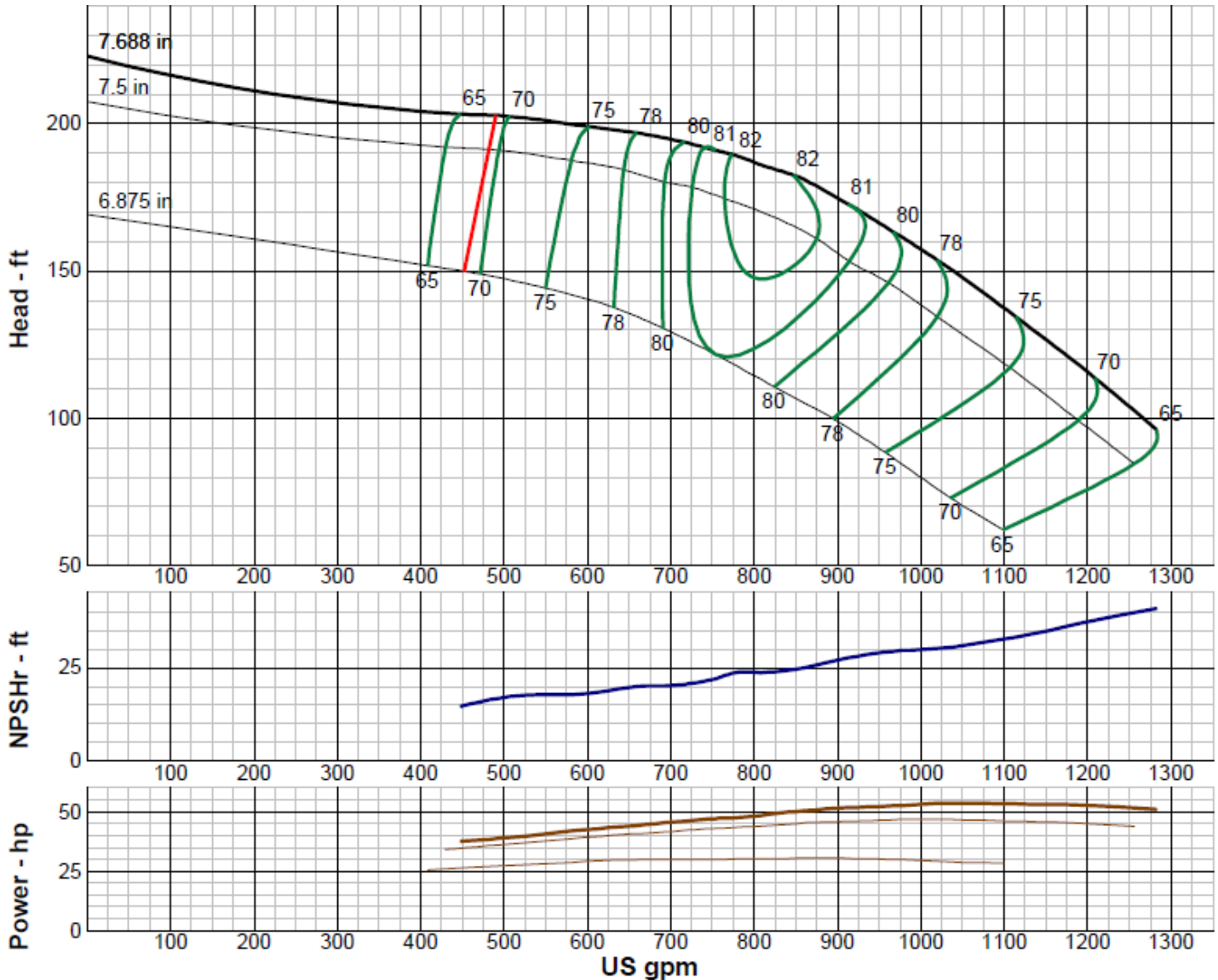
Wilo-Vertical Turbine Pump Curve

Single Stage Performance

wilo®

W10LS

3450 RPM



IMPELLER DATA

IMPELLER NUMBER	3103	Minimum submergence above eye of bottom impeller: 38 IN.
TYPE	SEMI-OPEN	
THRUST FACTOR	K=7.50	
EYE AREA	11.7 SQ. IN.	
WEIGHT	6.25 LB.	

EFFICIENCY CORRECTION

NUMBER OF BOWLS:	1	2	3	4	
CHANGE AS FOLLOWS:	-4	-2	-1	0	
CHANGE IN EFFICIENCY MAY AFFECT BOTH HEAD AND HORSEPOWER.					

PUMP MATERIAL EFFICIENCY CORRECTION

	DUCTILE	BRONZE	NI-R	STAINLESS
IMPELLER MATERIAL:	-2	0	-1	-2
BOWL MATERIAL:	-2	-2	-2	-3

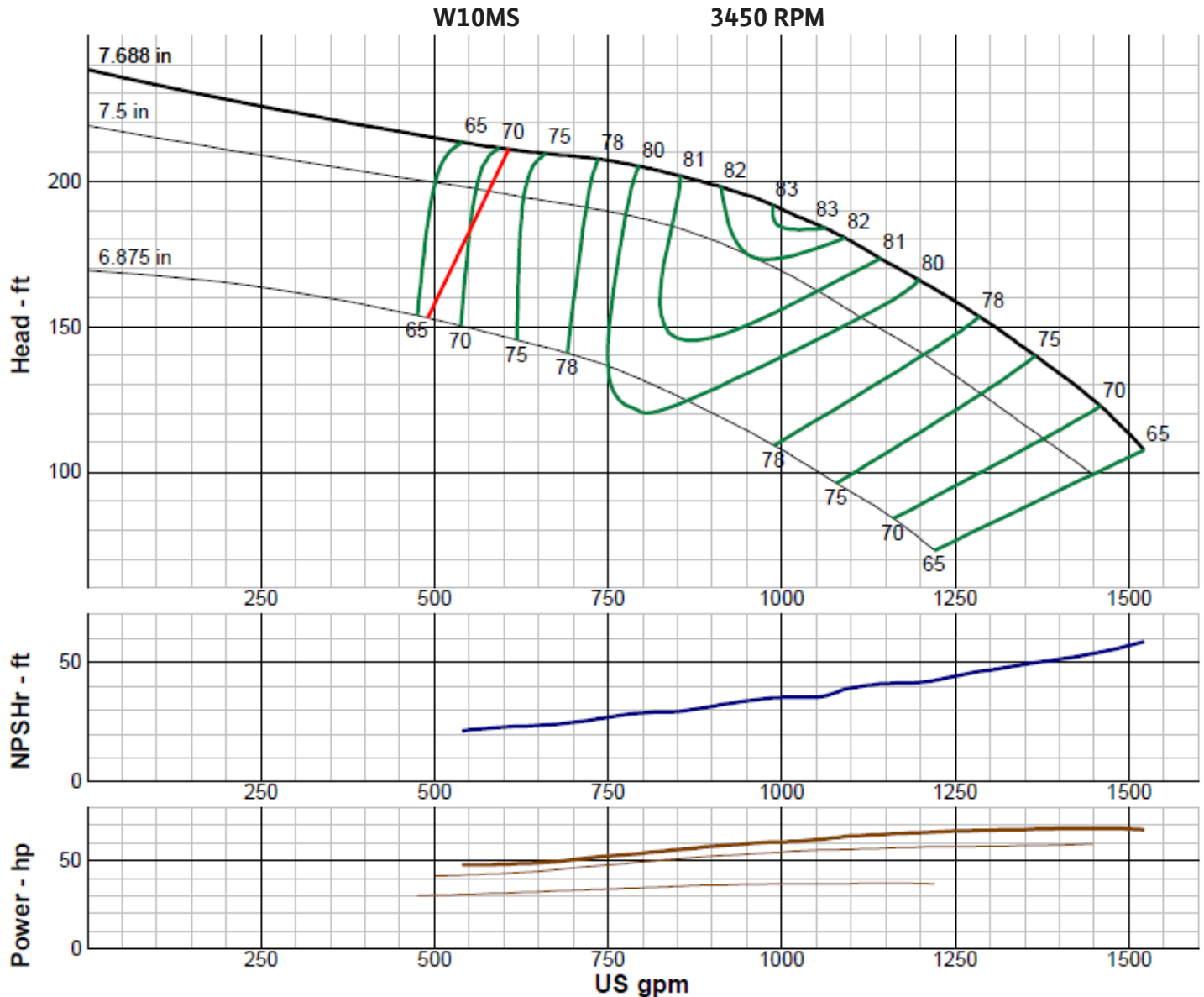
FLANGED BOWL DATA

BOWL NUMBER	3098
BOWL MAX. DIAMETER	9.500 IN.
BOWL MIN. DIAMETER	7.250 IN.
MAX. NO. STAGES	10
ONE STAGE WEIGHT	139 LB.
ADD STAGE WEIGHT	55 LB.
STD. SHAFT DIA.	1.500 IN.
STD. LATERAL	0.500 IN.
DISCHARGE SIZE	6 - 8 IN.
SUCTION CONNECTION	THD.
MAX. SPHERE SIZE	0.500
MAX. OPERATIONAL P.S.I.	595 (SPECIAL)

Performance based on pumping clean, fresh water at a temperature not over 85°F., free of gas, air or abrasives and with bowls properly adjusted and submerged. Performance curve reflects Hydraulic Institute tolerances and guidelines.

Wilo-Vertical Turbine Pump Curve

Single Stage Performance



IMPELLER DATA

IMPELLER NUMBER	3099	Minimum submergence above eye of bottom impeller: 38 IN.
TYPE	SEMI-OPEN	
THRUST FACTOR	K=7.50	
EYE AREA	11.7 SQ. IN.	
WEIGHT	5.75 LB.	

EFFICIENCY CORRECTION

NUMBER OF BOWLS:	1	2	3	4	
CHANGE AS FOLLOWS:	-4	-2	-1	0	
CHANGE IN EFFICIENCY MAY AFFECT BOTH HEAD AND HORSEPOWER.					

PUMP MATERIAL EFFICIENCY CORRECTION

	DUCTILE	BRONZE	NI-R	STAINLESS
IMPELLER MATERIAL:	-2	0	-1	-2
BOWL MATERIAL:	-2	-2	-2	-3

FLANGED BOWL DATA

BOWL NUMBER	3098
BOWL MAX. DIAMETER	9.500 IN.
BOWL MIN. DIAMETER	9.250 IN.
MAX. NO. STAGES	8
ONE STAGE WEIGHT	230 LB.
ADD STAGE WEIGHT	55 LB.
STD. SHAFT DIA.	1.500 IN.
STD. LATERAL	0.625 IN.
DISCHARGE SIZE	6 - 8 IN.
SUCTION CONNECTION	THD.
MAX. SPHERE SIZE	0.500
MAX. OPERATIONAL P.S.I.	595 (SPECIAL)

Performance based on pumping clean, fresh water at a temperature not over 85°F., free of gas, air or abrasives and with bowls properly adjusted and submerged. Performance curve reflects Hydraulic Institute tolerances and guidelines.

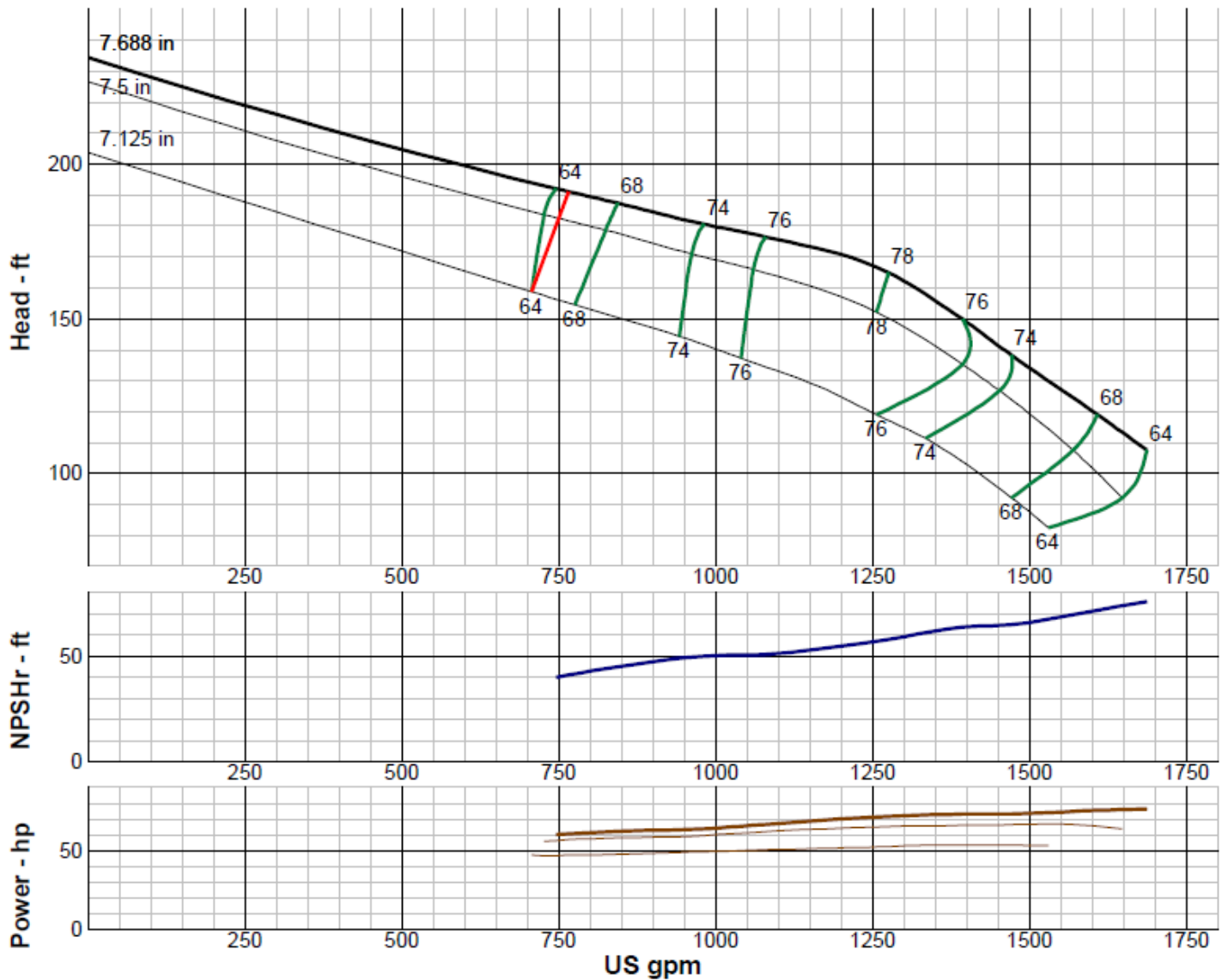
Wilo-Vertical Turbine Pump Curve

Single Stage Performance



W10HS

3450 RPM



IMPELLER DATA

IMPELLER NUMBER	2969	Minimum submergence above eye of bottom impeller: 39 IN.
TYPE	SEMI-OPEN	
THRUST FACTOR	K=9.20	
EYE AREA	14.9 SQ. IN.	
WEIGHT	5.25 LB.	

EFFICIENCY CORRECTION

NUMBER OF BOWLS:	1	2	3	4	
CHANGE AS FOLLOWS:	-4	-2	-1	0	
CHANGE IN EFFICIENCY MAY AFFECT BOTH HEAD AND HORSEPOWER.					

PUMP MATERIAL EFFICIENCY CORRECTION

	DUCTILE	BRONZE	NI-R	STAINLESS
IMPELLER MATERIAL:	-2	0	-1	-2
BOWL MATERIAL:	-2	-2	-2	-3

FLANGED BOWL DATA

BOWL NUMBER	2968
BOWL MAX. DIAMETER	9.500 IN.
BOWL MIN. DIAMETER	9.250 IN.
MAX. NO. STAGES	7
ONE STAGE WEIGHT	230 LB.
ADD STAGE WEIGHT	55 LB.
STD. SHAFT DIA.	1.500 IN.
STD. LATERAL	0.625 IN.
DISCHARGE SIZE	6 - 8 IN.
SUCTION CONNECTION	THD.
MAX. SPHERE SIZE	0.500
MAX. OPERATIONAL P.S.I.	595 (SPECIAL)

Performance based on pumping clean, fresh water at a temperature not over 85°F., free of gas, air or abrasives and with bowls properly adjusted and submerged. Performance curve reflects Hydraulic Institute tolerances and guidelines.

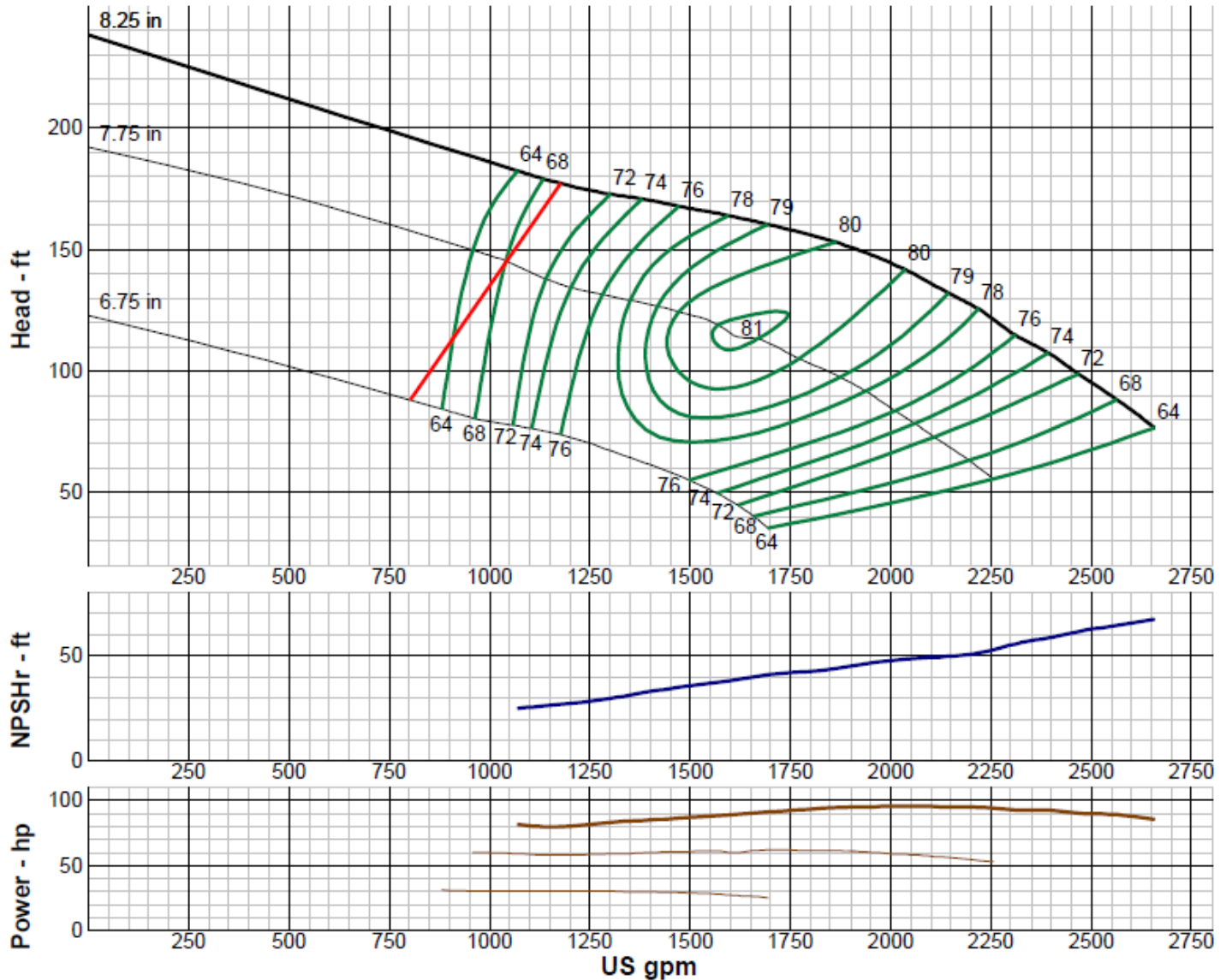
Wilo-Vertical Turbine Pump Curve

Single Stage Performance

wilo®

W10YS

3450 RPM



IMPELLER DATA

IMPELLER NUMBER	3542	Minimum submergence above eye of bottom impeller: 40 IN.
TYPE	SEMI-OPEN	
THRUST FACTOR	K=11.40	
EYE AREA	19.4 SQ. IN.	
WEIGHT	7.25 LB.	

EFFICIENCY CORRECTION

NUMBER OF BOWLS:	1	2	3	4	
CHANGE AS FOLLOWS:	-4	-2	-1	0	
CHANGE IN EFFICIENCY MAY AFFECT BOTH HEAD AND HORSEPOWER.					

PUMP MATERIAL EFFICIENCY CORRECTION

	DUCTILE	BRONZE	NI-R	STAINLESS
IMPELLER MATERIAL:	-2	0	-1	-2
BOWL MATERIAL:	-2	-2	-2	-3

FLANGED BOWL DATA

BOWL NUMBER	3541
BOWL MAX. DIAMETER	9.875 IN.
BOWL MIN. DIAMETER	9.500 IN.
MAX. NO. STAGES	8
ONE STAGE WEIGHT	250 LB.
ADD STAGE WEIGHT	60 LB.
STD. SHAFT DIA.	1.688 IN.
STD. LATERAL	0.750 IN.
DISCHARGE SIZE	6 - 8 IN.
DISCHARGE CONNECTION	THD. - FLG.
SUCTION SIZE	6 - 8 IN.
SUCTION CONNECTION	THD.
MAX. SPHERE SIZE	0.875
MAX. OPERATIONAL P.S.I.	455 (SPECIAL)

Performance based on pumping clean, fresh water at a temperature not over 85°F., free of gas, air or abrasives and with bowls properly adjusted and submerged. Performance curve reflects Hydraulic Institute tolerances and guidelines.