

Pioneering for You

wilo



# Maximum energy efficiency and operational reliability in the arena

Smart glanded in-line pump Wilo Stratos GIGA2.0-I

Due to their size and irregular use, arenas pose a particular challenge for heating, cooling and air-conditioning technology. The pumps and pump systems used consume a lot of energy and must adapt permanently to fluctuating demand before, during and after events to ensure energy-efficient operation. It is very important to ensure a high level of operational reliability so that no faults or even a breakdown occur during an event.

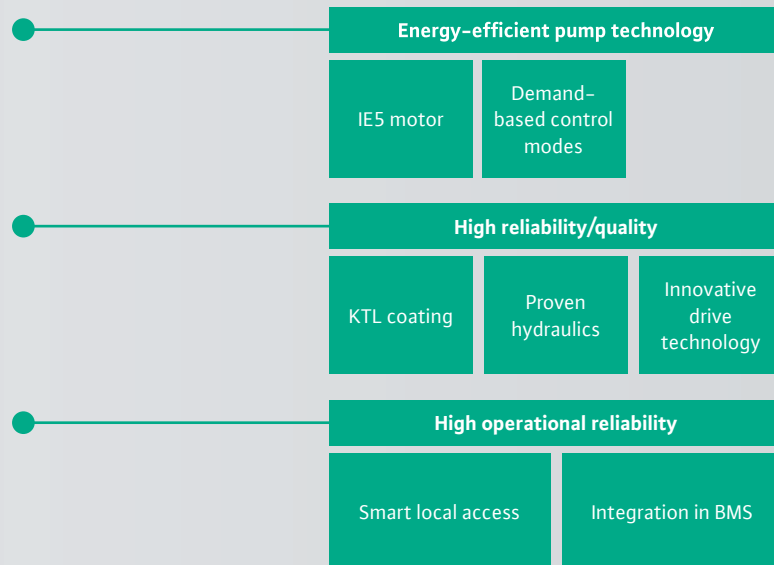
The Wilo-Stratos GIGA2.0-I features IE5 motor technology which allow for high energy efficiency. Its innovative control functions ensure a demand-based supply with maximum energy efficiency. The modern drive technology in connection with the proven pump hydraulics offers high reliability.

The smart glanded pump stands out with a high connectivity level. It offers a wide range of communication interfaces for transmitting and monitoring your operating data – within the building automation system, with local access via Bluetooth.



# Wilo-Stratos GIGA2.0-I

## Smart Glanded In-Line Pump

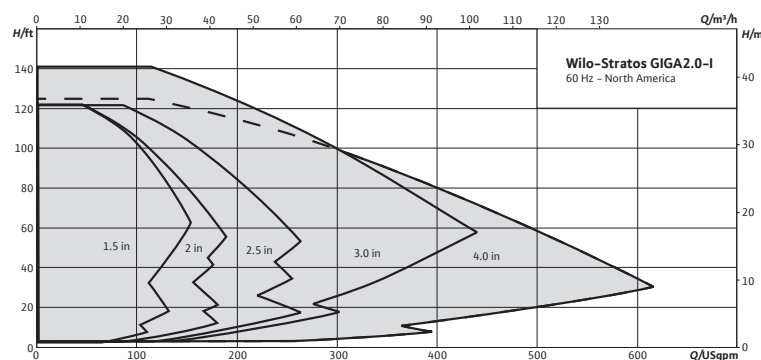


### Technical Data

- Permitted temperature range of the fluid:  $-4^{\circ}\text{F}$  to  $250^{\circ}\text{F}$
- Ambient temperature up to  $122^{\circ}\text{F}$
- Flange Size: DN 40 to DN 100 (1.5" – 4")
- Max. Operating Pressure: 175 PSI at  $-4^{\circ}\text{F}$  to  $250^{\circ}\text{F}$
- Mains Connections: 3~ 480 V, 50/60 Hz
- Compliance with electromagnetic compatibility in accordance with EN 61800-3:2018 without additional measures

### Materials

- Pump Housing and Lantern: EN-GJL-250, Cathaporetic coating
- Impeller: PPS-GF40
- Mechanical Seal: Q1Q1X4GG



### Equipment

- Highly efficient IE5 motor in accordance with IEC 60034-30-2
- Rotatable, graphic colour display, application-guided setting assistant
- Integrated motor protection