

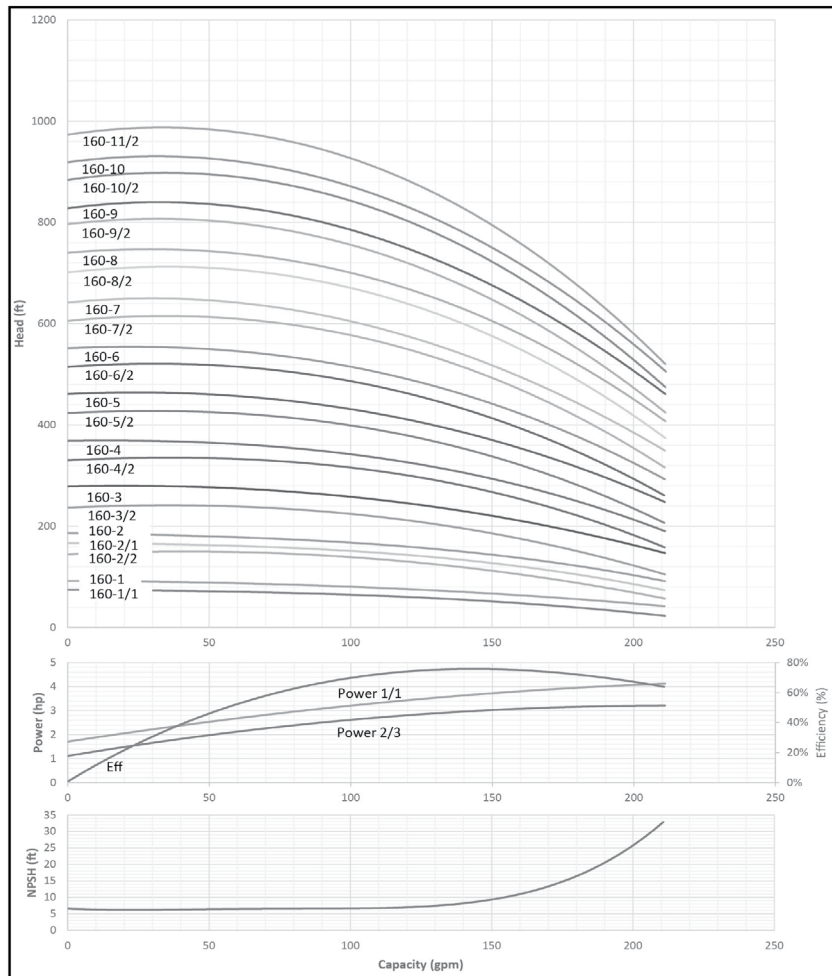
Submittal Data Sheet

MVI - Vertical Multistage Pumps



A WILO BRAND

MVI 160								
	Project:							
	Engineer:							
	Contractor:							
	Submitted By:				Date:			
	Approved By:				Date:			
Tag #	Model #	Flow	Head	HP	Cycle	Phase	Voltage	RPM
					60HZ			



- ### Applications
- Water supply & pressure boosting
 - Industrial circulation systems
 - Cooling water circulation systems
 - Process water
 - Washing systems
 - Irrigation

Materials of Construction

	AISI 304 Stainless Steel Model	AISI 316 stainless steel Model
Pump Volute, Impeller, Outer Sleeve, Cover, Seal Chamber	AISI 304 stainless steel	AISI 316 stainless steel
Shaft	AISI 431 stainless steel	AISI 316 stainless steel
Pedestal	ASTM 65-45-12 Cast Iron	
Flanges	ASTM 65-45-12 Cast Iron	
Baseplate	ASTM 25B Cast Iron	
Mechanical Seal	EPDM or Viton	
O-ring	EPDM or Viton	

Technical Data

Certification	NSF/ANSI 61 & 372 Certified
Liquid Temp Range	5 °F to 248 °F; determined by liquid type
Power Supply	1-115/208-230/460V, 3-208-230/460V, 3-575V
Ambient temperature	32 °F to 104 °F
Flange Connection	2-1/2" ANSI CLASS 150 for MVI 160-1/1 - 160-5 2-1/2" ANSI CLASS 300 for MVI 160-6/2 - 160-11/2
Max Operating Pressure	232 PSI for MVI 160-1/1 - MVI 160-5 435 PSI for MVI 160-6/2 - MVI 160-11/2
Protection Class	IP 55

Approval Stamp

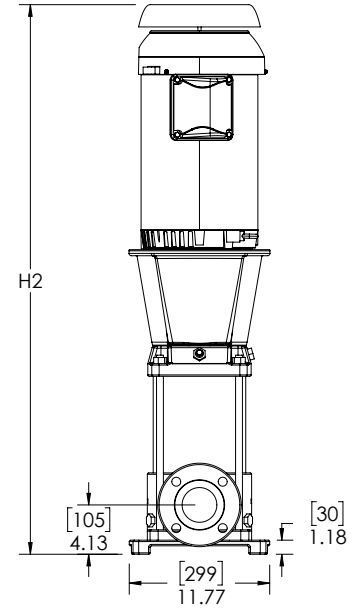
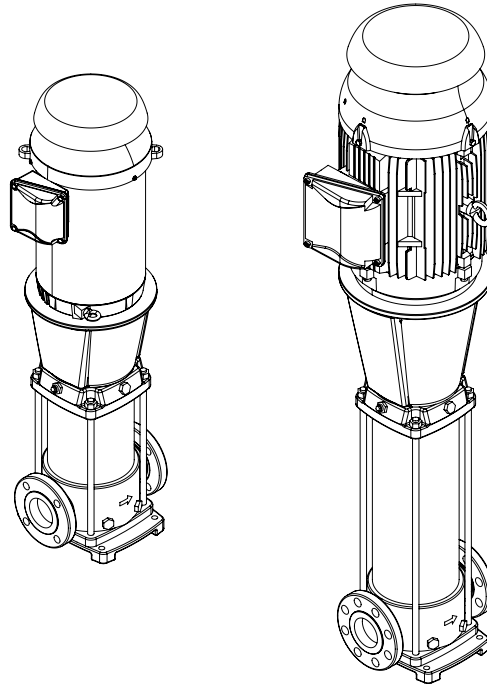
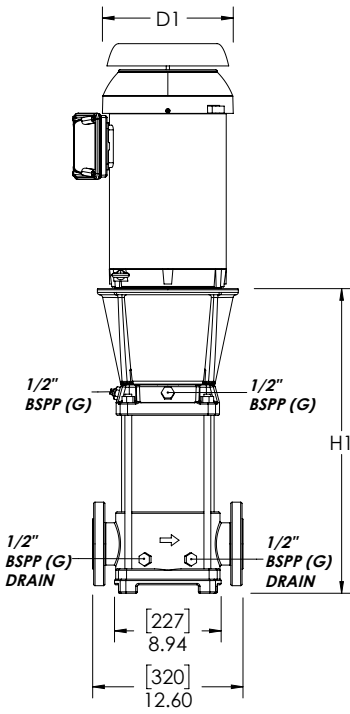
Submittal Data Sheet

MVI - Vertical Multistage Pumps



A WILO BRAND

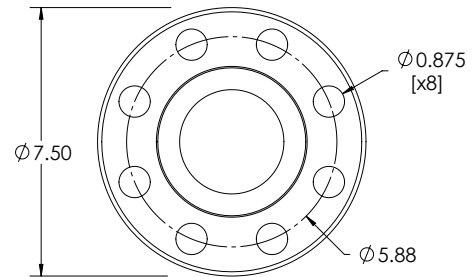
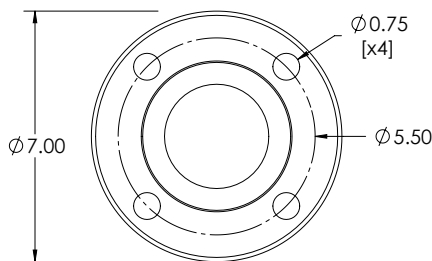
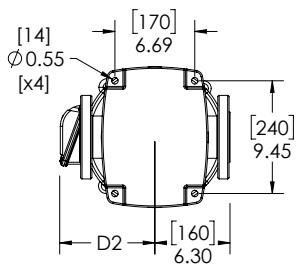
Dimensions, Weights & Electrical Data



note:
Refer to the flow arrow
on the pump volute
for the direction of flow.

MVI 160-1/1 - 160-5
2.5" - 150# ANSI
SUCTION &
DISCHARGE

MVI 160-6/2 - 160-11/2
2.5" - 300# ANSI
SUCTION &
DISCHARGE



Submittal Data Sheet

Scot MVI – Vertical Multistage Pumps



A WILO BRAND

Dimensions, Weights & Electrical Data

Dimensions and Weights											TEFC Motor Data					
		H ₁		H ₂		D ₁		D ₂				115/208-230				
		Dimensions-inches (mm)								Weight		P2	Frame	Phase	FLA	
Model	in	mm	in	(mm)	in	(mm)	in	(mm)	in	(mm)	lbs	kg	[HP]	[~]	[A]	
MVI 160-1/1	20.0	509	33.7	856	8.6	218	6.9	174	183	83			3	182TC	1	29/15-14.5

Dimensions and Weights											TEFC Motor Data					
		H ₁		H ₂		D ₁		D ₂				208-230/460 V				
		Dimensions-inches (mm)								Weight		P2	Frame	Phase	FLA	
Model	in	mm	in	(mm)	in	(mm)	in	(mm)	in	(mm)	lbs	kg	[HP]	[~]	[A]	
MVI 160-1/1	20.0	509	34.9	886	10.1	256	6.7	170	186	84			3	182/4TC	3	8.12-7.34/3.67
MVI 160-1	20.0	509	36.4	926	10.1	256	6.7	170	201	91			5	182/4TC	3	13.1-11.8/5.90
MVI 160-2/2	22.8	579	41.7	1059	11.0	279	8.0	203	261	118			7.5	213/5TC	3	19.2-17.3/8.67
MVI 160-2/1	22.8	579	41.7	1059	11.0	279	8.0	203	261	118			7.5	213/5TC	3	19.2-17.3/8.67
MVI 160-2	22.8	579	41.7	1059	11.0	279	8.0	203	261	118			7.5	213/5TC	3	19.2-17.3/8.67
MVI 160-3/2	25.5	648	45.9	1167	11.0	279	8.0	203	292	133			10	213/5TC	3	25.4-23.0/11.5
MVI 160-3	29.7	754	50.2	1275	13.2	335	9.4	240	336	153			15	254/6TC	3	38.5-34.8/17.4
MVI 160-4/2	32.4	823	53.0	1345	13.2	335	9.4	240	343	156			15	254/6TC	3	38.5-34.8/17.4
MVI 160-4	32.4	823	53.0	1345	13.2	335	9.4	240	343	156			15	254/6TC	3	38.5-34.8/17.4
MVI 160-5/2	35.2	894	56.6	1438	13.2	335	9.4	240	391	177			20	254/6TC	3	50.2-45.4/22.7
MVI 160-5	35.2	894	56.6	1438	13.2	335	9.4	240	391	177			20	254/6TC	3	50.2-45.4/22.7
MVI 160-6/2	37.9	963	62.0	1575	14.2	360	11.1	282	557	253			25	284TSC	3	63.0-57.6/28.8
MVI 160-6	37.9	963	62.0	1575	14.2	360	11.1	282	558	253			25	284TSC	3	63.0-57.6/28.8
MVI 160-7/2	40.7	1034	66.3	1683	14.2	360	11.1	282	584	265			30	286TSC	3	76.7-68.4/34.2
MVI 160-7	40.7	1034	66.3	1683	14.2	360	11.1	282	584	265			30	286TSC	3	76.7-68.4/34.2
MVI 160-8/2	43.4	1103	69.0	1753	14.2	360	11.1	282	591	268			30	286TSC	3	76.7-68.4/34.2
MVI 160-8	43.4	1103	70.4	1789	15.8	402	12.6	320	718	326			40	324TSC	3	101-92.6/46.3
MVI 160-9/2	46.2	1173	73.2	1859	15.8	402	12.6	320	724	329			40	324TSC	3	101-92.6/46.3
MVI 160-9	46.2	1173	73.2	1859	15.8	402	12.6	320	724	329			40	324TSC	3	101-92.6/46.3
MVI 160-10/2	49.0	1244	76.0	1929	15.8	402	12.6	320	730	331			40	324TSC	3	101-92.6/46.3
MVI 160-10	49.0	1244	76.0	1929	15.8	402	12.6	320	730	331			40	324TSC	3	101-92.6/46.3
MVI 160-11/2	51.7	1313	78.7	1999	15.8	402	12.6	320	736	334			40	324TSC	3	101-92.6/46.3

Submittal Data Sheet

Scot MVI – Vertical Multistage Pumps



A WILO BRAND

Dimensions, Weights & Electrical Data

Dimensions and Weights											TEFC Motor Data			
Model	H ₁		H ₂		D ₁		D ₂		Weight		P2	Frame	Phase	575V
	in	mm	in	(mm)	in	(mm)	in	(mm)	lbs	kg				FLA
Dimensions—inches (mm)											[HP]		[~]	[A]
MVI 160-1/1	20.0	509	33.0	839	8.9	226	7.6	192	202	92	3	182/4TC	3	2.9
MVI 160-1	20.0	509	34.5	876	8.9	226	7.6	192	205	93	5	184TC	3	4.72
MVI 160-2/2	22.8	579	39.4	1001	11.0	279	8.0	203	261	118	7.5	213/5TC	3	6.94
MVI 160-2/1	22.8	579	39.4	1001	11.0	279	8.0	203	261	118	7.5	213/5TC	3	6.94
MVI 160-2	22.8	579	39.4	1001	11.0	279	8.0	203	261	118	7.5	213/5TC	3	6.94
MVI 160-3/2	25.5	648	43.7	1110	11.0	279	8.0	203	296	135	10	213/5TC	3	9.2
MVI 160-3	29.7	754	47.9	1216	11.0	279	8.0	203	317	144	15	254/6TC	3	9.2
MVI 160-4/2	32.4	823	50.6	1285	11.0	279	8.0	203	324	147	15	254/6TC	3	9.2
MVI 160-4	32.4	823	50.6	1285	11.0	279	8.0	203	324	147	15	254/6TC	3	9.2
MVI 160-5/2	35.2	894	54.5	1384	13.2	335	9.4	240	392	178	20	254/6TC	3	18.2
MVI 160-5	35.2	894	54.5	1384	13.2	335	9.4	240	392	178	20	254/6TC	3	18.2
MVI 160-6/2	37.9	963	61.2	1555	14.2	360	11.1	282	568	258	25	284/6TSC	3	23
MVI 160-6	37.9	963	61.2	1555	14.2	360	11.1	282	569	258	25	284/6TSC	3	23
MVI 160-7/2	40.7	1034	64.0	1625	14.2	360	11.1	282	594	270	30	284/6TSC	3	27.4
MVI 160-7	40.7	1034	64.0	1625	14.2	360	11.1	282	594	270	30	284/6TSC	3	27.4
MVI 160-8/2	43.4	1103	66.7	1695	14.2	360	11.1	282	601	273	30	284/6TSC	3	27.4
MVI 160-8	43.4	1103	69.3	1760	15.8	402	12.6	320	749	340	40	324/6TSC	3	37
MVI 160-9/2	46.2	1173	72.1	1830	15.8	402	12.6	320	755	343	40	324/6TSC	3	37
MVI 160-9	46.2	1173	72.1	1830	15.8	402	12.6	320	755	343	40	324/6TSC	3	37
MVI 160-10/2	49.0	1244	74.8	1900	15.8	402	12.6	320	761	345	40	324/6TSC	3	37
MVI 160-10	49.0	1244	74.8	1900	15.8	402	12.6	320	761	345	40	324/6TSC	3	37
MVI 160-11/2	51.7	1313	77.6	1970	15.8	402	12.6	320	767	348	40	324/6TSC	3	37