


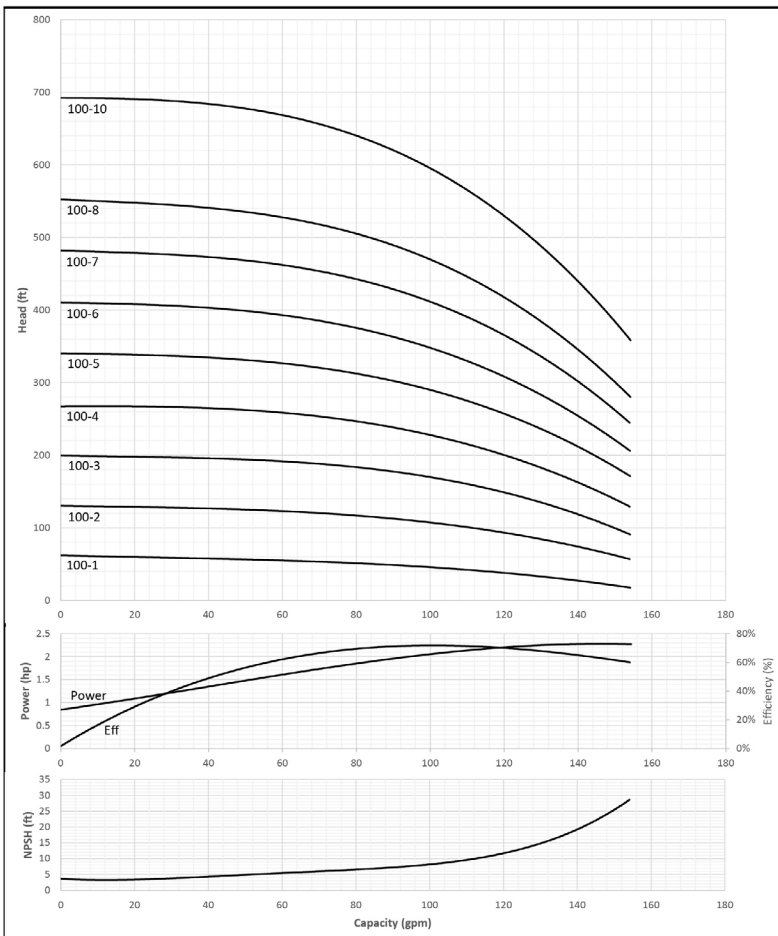
# Submittal Data Sheet

## MVI - Vertical Multistage Pumps



A WILO BRAND

MVI 100								
		Project:						
		Engineer:						
		Contractor:						
		Submitted By:				Date:		
		Approved By:				Date:		
Tag #	Model #	Flow	Head	HP	Cycle	Phase	Voltage	RPM
					60HZ			



- ### Applications
- Water supply & pressure boosting
  - Industrial circulation systems
  - Cooling water circulation systems
  - Process water
  - Washing systems
  - Irrigation

### Materials of Construction

	AISI 304 Stainless Steel Model	AISI 316 stainless steel Model
Pump Volute, Impeller, Outer Sleeve, Cover, Seal Chamber	AISI 304 stainless steel	AISI 316 stainless steel
Shaft	AISI 431 stainless steel	AISI 316 stainless steel
Pedestal	ASTM 65-45-12 Cast Iron	
Flanges	ASTM 65-45-12 Cast Iron	
Baseplate	ASTM 25B Cast Iron	
Mechanical Seal	EPDM or Viton	
O-ring	EPDM or Viton	

### Technical Data

Certification	NSF/ANSI 61 & 372 Certified
Liquid Temp Range	5 °F to 248 °F; determined by liquid type
Power Supply	1~115/208-230/460V, 3~208-230/460V, 3~575V
Ambient temperature	32 °F to 104 °F
Flange Connection	2" ANSI CLASS 300
Max Operating Pressure	232 PSI for MVI 100-1 - MVI 100-7 363 PSI for MVI 100-8 - MVI 100-10
Protection Class	IP 55

Approval Stamp

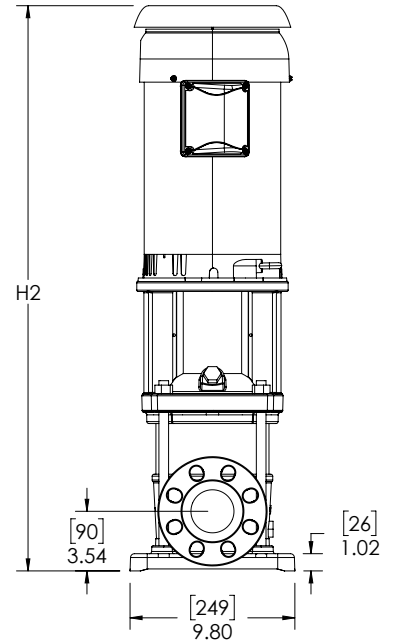
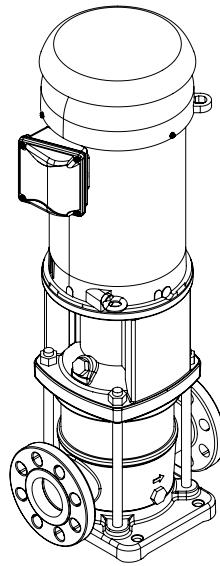
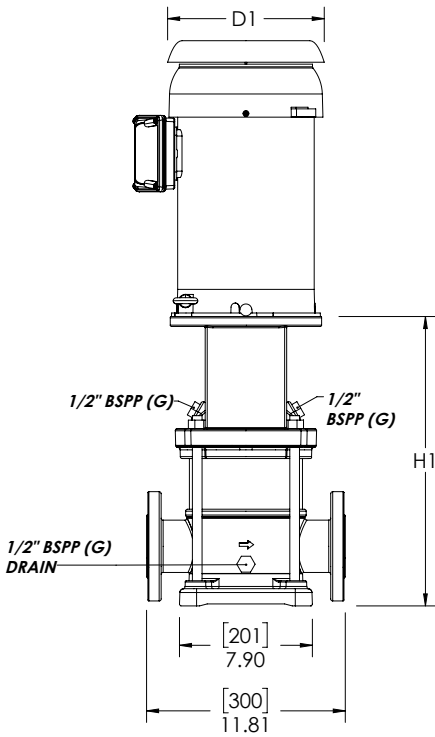
# Submittal Data Sheet

## MVI - Vertical Multistage Pumps



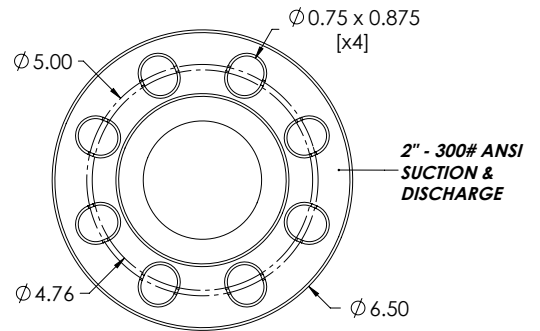
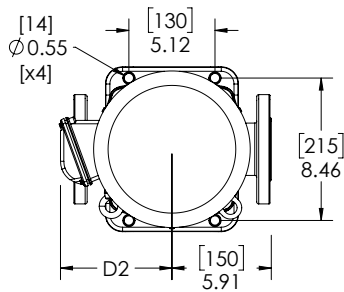
A WILO BRAND

### Dimensions, Weights & Electrical Data



**note:**  
Direction of flow  
is from left to right  
when viewing the  
drain port.

Refer to the flow arrow  
on the pump volute.



# Submittal Data Sheet

## Scot MVI – Vertical Multistage Pumps



A WILO BRAND

### Dimensions, Weights & Electrical Data

Dimensions and Weights										
Model	H <sub>1</sub>		H <sub>2</sub>		D <sub>1</sub>		D <sub>2</sub>		Weight	
	Dimensions—inches (mm)									
	in	mm	in	(mm)	in	(mm)	in	(mm)	lbs	kg
MVI 100-1	17.2	437	30.9	784	8.6	218	6.9	174	156	71

TEFC Motor Data			
115/208-230			
P2	Frame	Phase	FLA
[HP]		[~]	[A]
3	182TC	1	29/15-14.5

Dimensions and Weights										
Model	H <sub>1</sub>		H <sub>2</sub>		D <sub>1</sub>		D <sub>2</sub>		Weight	
	Dimensions—inches (mm)									
	in	mm	in	(mm)	in	(mm)	in	(mm)	lbs	kg
MVI 100-1	17.2	437	32.0	814	10.1	256	6.7	170	159	72
MVI 100-2	17.2	437	33.6	854	10.1	256	6.7	170	175	80
MVI 100-3	19.5	496	38.4	976	11.0	279	8.0	203	238	108
MVI 100-4	21.3	541	41.7	1059	11.0	279	8.0	203	266	121
MVI 100-5	25.7	653	46.2	1174	13.2	335	9.4	240	302	137
MVI 100-6	27.5	697	48.0	1219	13.2	335	9.4	240	305	138
MVI 100-7	29.2	743	50.7	1287	13.2	335	9.4	240	349	158
MVI 100-8	31.0	788	52.5	1332	13.2	335	9.4	240	352	160
MVI 100-10	33.8	859	57.9	1470	14.2	360	11.1	282	511	232

TEFC Motor Data			
208-230/460 V			
P2	Frame	Phase	FLA
[HP]		[~]	[A]
3	182/4TC	3	8.12-7.34/3.67
5	182/4TC	3	13.1-11.8/5.90
7.5	213/5TC	3	19.2-17.3/8.67
10	213/5TC	3	25.4-23.0/11.5
15	254/6TC	3	38.5-34.8/17.4
15	254/6TC	3	38.5-34.8/17.4
20	254/6TC	3	50.2-45.4/22.7
20	254/6TC	3	50.2-45.4/22.7
25	284TSC	3	63.0-57.6/28.8

Dimensions and Weights										
Model	H <sub>1</sub>		H <sub>2</sub>		D <sub>1</sub>		D <sub>2</sub>		Weight	
	Dimensions—inches (mm)									
	in	mm	in	(mm)	in	(mm)	in	(mm)	lbs	kg
MVI 100-1	17.2	437	30.2	767	8.9	226	7.6	192	175	80
MVI 100-2	17.2	437	31.7	804	8.9	226	7.6	192	179	81
MVI 100-3	19.5	496	36.2	918	11.0	279	8.0	203	238	108
MVI 100-4	21.3	541	39.5	1003	11.0	279	8.0	203	270	123
MVI 100-5	25.7	653	43.9	1115	11.0	279	8.0	203	283	128
MVI 100-6	27.5	697	45.7	1160	11.0	279	8.0	203	286	130
MVI 100-7	29.2	743	48.5	1233	13.2	335	9.4	240	350	159
MVI 100-8	31.0	788	50.3	1278	13.2	335	9.4	240	353	160
MVI 100-10	33.8	859	57.1	1450	14.2	360	11.1	282	522	237

TEFC Motor Data			
575V			
P2	Frame	Phase	FLA
[HP]		[~]	[A]
3	182/4TC	3	2.9
5	184TC	3	4.72
7.5	213/5TC	3	6.94
10	213/5TC	3	9.2
15	254/6TC	3	9.2
15	254/6TC	3	9.2
20	254/6TC	3	18.2
20	254/6TC	3	18.2
25	284/6TSC	3	23