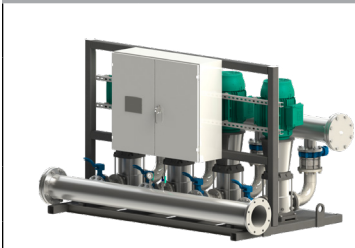


Submittal Data Sheet

Wilco-CO MVI - NSF 61/372 Pressure Boosting System

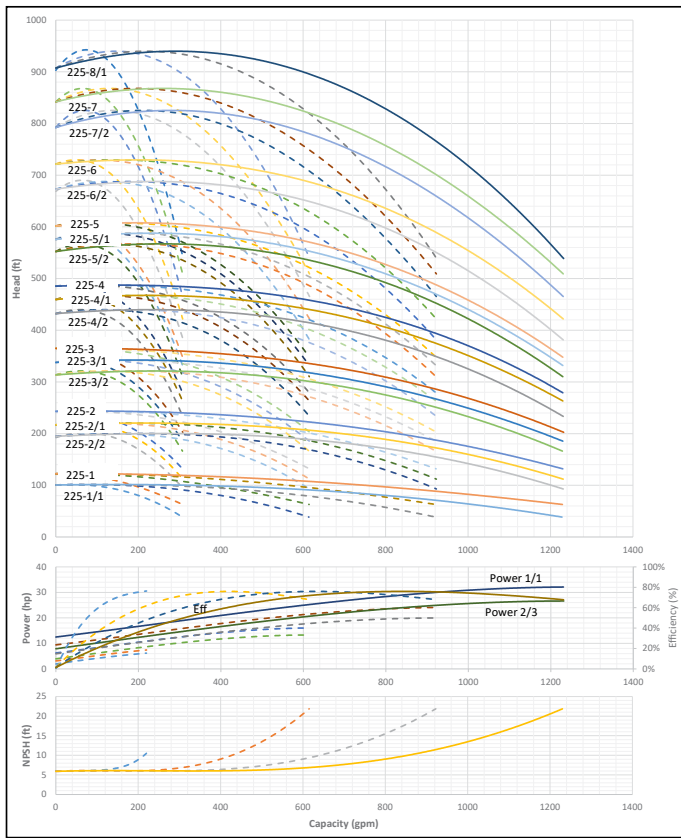


CO4 MVI-1SB-225



Project:	
Engineer:	
Contractor:	
Submitted By:	Date:
Approved By:	Date:

Tag #	Model #	Flow	BOOST PSI	Min. Inlet PSI	HP/Pump	Phase	Voltage	RPM
	CO4 MVI-1SB-225				1			3600



Applications

- Water Supply
- Pressure Boosting
- Agriculture
- Cooling Circuits
- Washing / Sprinkling Systems
- Condensate Return

Materials of Construction

Volute	AISI 304 Stainless Steel with Cast Iron ANSI flanges
Impeller	AISI 304 Stainless Steel
Shaft	ANSI 431 Stainless Steel
Elastomers	EPDM
Manifold	AISI 304 Stainless Steel
Suction Isolation Valves	150# Cast Iron Wafer Butterfly, All Stainless Steel Wetted Components
Discharge Isolation Valve	150# Cast Iron Wafer Butterfly, All Stainless Steel Wetted Components or 300# 304SS Ball Valve
Check Valve	Wafer Style, 316 Stainless Steel internals, non-slam, plunger type with EPDM seal/ cast iron body
Mechanical Seal	Frame and Springs 304SS
Pressure Transducers	¼" MNPT, 316 Stainless Steel
Pressure Gauges	¼" MNPT, 304 Stainless Steel Housing with 316 Stainless Steel wetted parts
System Base	Epoxy Coated A-500 Steel Tubing and A36 C-Channel/Plates

Technical Data - Operational Ranges

Liquid Temp Range	5°F to 248°F (Min. 32 °F for Domestic Water)
Ambient Temp Range	+32°F to +104 °F

Technical Data - Panel

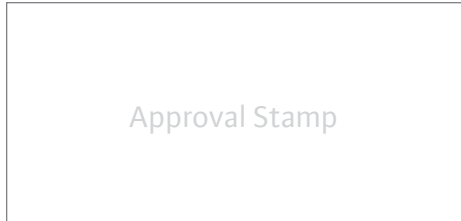
Liquid Temp Range	208-230/460-3 or 575-3
Enclosure	NEMA 3R up to 20 HP NEMA 12 for 25 HP and above (NEMA 4 and 4X available upon request)
Standard	Meets UL 508A
Variable Frequency Drives	Danfoss FC-101: • 1 HP to 3 HP 208-230V-1 IN / 208-230V-3 OUT • 1 HP to 60 HP 208-230V-3 • 1 HP to 100 HP 460V-3 • 1 HP to 100 HP 575V-3

Technical Data - PLC

User Interface	7" Diagonal Color LCD Touchscreen
Display Resolution	800 x 480 Pixels
Supply Voltage	24VDC
Max. Current Consumption	320mA@24V
Number of Analog Inputs	4
Number of Analog Outputs	4
Number of Digital Inputs	18
Number of Digital Outputs	17
Onboard Communications	Modbus Protocol (Optional Gateways for BACnet, LonWorks, and CANbus)
Ethernet Port	RJ45 port capable of transmitting data 10/100Mbps
Additional Ports	2.0 USB Port; Micro-SD Port

Motor Data

Power Supply	208-230, 460, 575-3
Motor Enclosure	Totally Enclosed Fan Cooled (TEFC)
Motor Efficiency	Nema Premium Efficiency - Meets NEMA 12-12 Rule
Enclosure Construction	Rolled Steel / Cast Iron
Motor Protection Index	IP54
Insulation Class	F



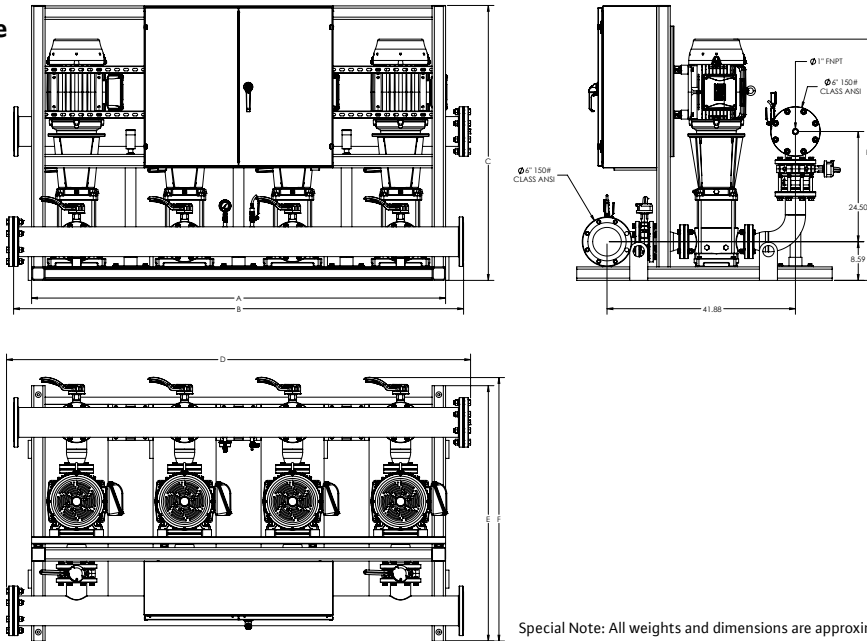
Submittal Data Sheet

Wilo-CO MVI - NSF 61/372 Pressure Boosting System



CO4 MVI-1SB-225

150# Discharge



Special Note: All weights and dimensions are approximate and should not be used as exact rough-in dimensions

CO4 MVI-1SB-225

Model	Article	HP	Voltage	Phase	System Header Size (ANSI)	Pmax (PSI)	Dimensions - Inches (In)							System Weight (Lbs)	TEFC Motor Data (Per Motor)	
							A (in)	B (in)	C (in)	D (in)	E (in)	F (in)	H (in)		Motor FLA (per pump)	System FLA
							(A)									
CO4 MVI-1SB-225-1/1	3355001	7.5	208V-230V	~3	6" 150#	232	67.25	75.25	61.1	78.38	56.76	58.62	42	2801.5	19.2-17.3	85-73
CO4 MVI-1SB-225-1	3355002	7.5	208V-230V	~3	6" 150#	232	67.25	75.25	61.1	78.38	56.76	58.62	42	2801.62	19.2-17.3	85-73
CO4 MVI-1SB-225-2/2	3355003	15	208V-230V	~3	6" 150#	232	92	100	61.1	103.13	56.76	58.62	53.61	3756.35	38.5-34.8	165-153.8
CO4 MVI-1SB-225-2/1	3355004	15	208V-230V	~3	6" 150#	232	92	100	61.1	103.13	56.76	58.62	53.61	3756.43	38.5-34.8	165-153.8
CO4 MVI-1SB-225-2	3355005	15	208V-230V	~3	6" 150#	232	92	100	61.1	103.13	56.76	58.62	53.61	3756.51	38.5-34.8	165-153.8
CO4 MVI-1SB-225-3/2	3355006	20	208V-230V	~3	6" 150#	232	92	100	91.1	103.13	56.76	58.62	56.76	3647.51	50.2-45.4	211.8
CO4 MVI-1SB-225-3/1	3355007	25	208V-230V	~3	6" 150#	232	92	100	91.1	103.13	56.76	60.63	59.02	3960.27	63.0-57.6	261
CO4 MVI-1SB-225-3	3355008	25	208V-230V	~3	6" 150#	232	92	100	91.1	103.13	56.76	60.63	59.02	3960.39	63.0-57.6	261
CO4 MVI-1SB-225-4/2	3355009	30	208V-230V	~3	6" 150#	232	92	100	103.1	103.13	56.76	60.63	62.17	4058.66	76.7-68.4	305
CO4 MVI-1SB-225-1/1	3355291	7.5	460V	~3	6" 150#	232	67.25	75.25	61.1	78.38	56.76	58.62	42	2497.19	8.67	45
CO4 MVI-1SB-225-1	3355292	7.5	460V	~3	6" 150#	232	67.25	75.25	61.1	78.38	56.76	58.62	42	2497.31	8.67	45
CO4 MVI-1SB-225-2/2	3355293	15	460V	~3	6" 150#	232	92	100	61.1	103.13	56.76	58.62	53.61	3756.35	17.4	74.6
CO4 MVI-1SB-225-2/1	3355294	15	460V	~3	6" 150#	232	92	100	61.1	103.13	56.76	58.62	53.61	3756.43	17.4	74.6
CO4 MVI-1SB-225-2	3355295	15	460V	~3	6" 150#	232	92	100	61.1	103.13	56.76	58.62	53.61	3756.51	17.4	74.6
CO4 MVI-1SB-225-3/2	3355296	20	460V	~3	6" 150#	232	92	100	61.1	103.13	56.76	58.62	56.76	3820.67	22.7	99.8
CO4 MVI-1SB-225-3/1	3355297	25	460V	~3	6" 150#	232	92	100	61.1	103.13	56.76	58.62	59.02	4133.43	28.8	118.2
CO4 MVI-1SB-225-3	3355298	25	460V	~3	6" 150#	232	92	100	61.1	103.13	56.76	58.62	59.02	4133.55	28.8	118.2
CO4 MVI-1SB-225-4/2	3355299	30	460V	~3	6" 150#	232	92	100	61.1	103.13	56.76	58.62	62.17	4209.71	34.2	139.4
CO4 MVI-1SB-225-1/1	3355581	7.5	575V	~3	6" 150#	232	67.25	75.25	61.1	78.38	56.76	58.62	42	2508.43	6.94	34.2
CO4 MVI-1SB-225-1	3355582	7.5	575V	~3	6" 150#	232	67.25	75.25	61.1	78.38	56.76	58.62	42	2508.55	6.94	34.2
CO4 MVI-1SB-225-2/2	3355583	15	575V	~3	6" 150#	232	92	100	69.1	103.13	56.76	58.61	53.61	3311.82	13.8	63.8
CO4 MVI-1SB-225-2/1	3355584	15	575V	~3	6" 150#	232	92	100	69.1	103.13	56.76	58.61	53.61	3311.9	13.8	63.8
CO4 MVI-1SB-225-2	3355585	15	575V	~3	6" 150#	232	92	100	69.1	103.13	56.76	58.61	53.61	3311.98	13.8	63.8
CO4 MVI-1SB-225-3/2	3355586	20	575V	~3	6" 150#	232	92	100	69.1	103.13	56.76	58.61	56.76	3376.14	18.2	86.6
CO4 MVI-1SB-225-3/1	3355587	25	575V	~3	6" 150#	232	92	100	91.1	103.13	56.76	60.63	59.02	3932.27	23	103.8
CO4 MVI-1SB-225-3	3355588	25	575V	~3	6" 150#	232	92	100	91.1	103.13	56.76	60.63	59.02	3932.39	23	103.8
CO4 MVI-1SB-225-4/2	3355589	30	575V	~3	6" 150#	232	92	100	91.1	103.13	56.76	60.63	62.17	4040.55	27.4	127

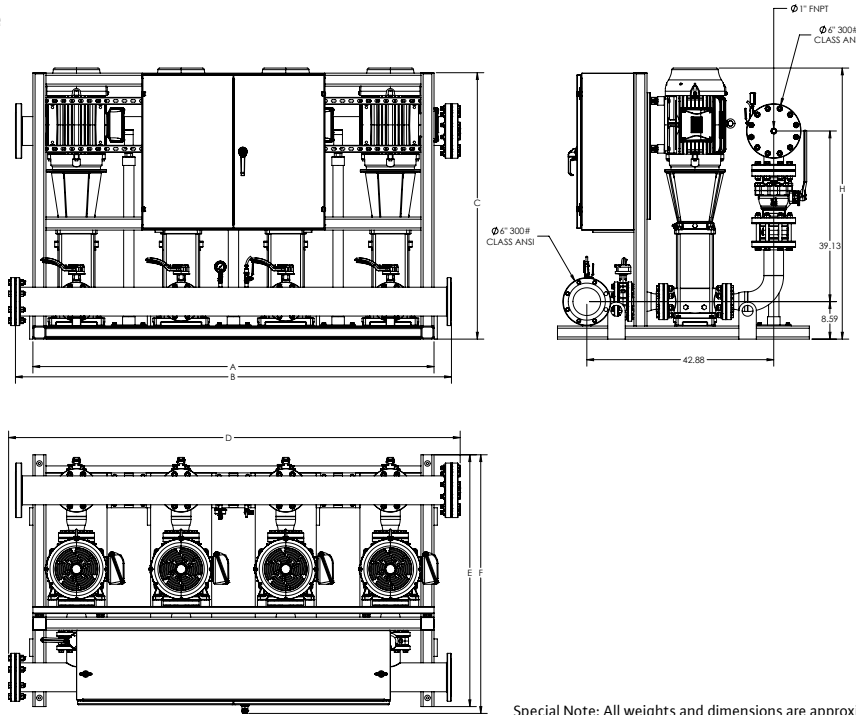
Submittal Data Sheet

Wilo-CO MVI - NSF 61/372 Pressure Boosting System



CO4 MVI-1SB-225

300# Discharge



Special Note: All weights and dimensions are approximate and should not be used as exact rough-in dimensions

CO4 MVI-1SB-225

TEFC Motor Data (Per Motor)

Model	Article	HP	Voltage	Phase	System Header Size (ANSI)	Pmax (PSI)	Dimensions - Inches (in)								System Weight (Lbs)	Motor FLA	System
							A (in)	B (in)	C (in)	D (in)	E (in)	F (in)	H (in)	(A)		FLA	
CO4 MVI-1SB-225-4/1	3355010	30	208V-230V	~3	6" 300#	435	92	100	103.1	103.57	57.76	59.32	62.17	4502.1	76.7-68.4	305	
CO4 MVI-1SB-225-4	3355011	30	208V-230V	~3	6" 300#	435	92	100	103.1	103.57	57.76	59.32	62.17	4502.18	76.7-68.4	305	
CO4 MVI-1SB-225-5/2	3355012	40	208V-230V	~3	6" 300#	435	101	109	103.1	112.57	57.76	60.28	67.87	5200.2	101-92.6	415.8	
CO4 MVI-1SB-225-5/1	3355013	40	208V-230V	~3	6" 300#	435	101	109	103.1	112.57	57.76	60.28	67.87	5200.2	101-92.6	415.8	
CO4 MVI-1SB-225-5	3355014	40	208V-230V	~3	6" 300#	435	101	109	103.1	112.57	57.76	60.28	67.87	5200.2	101-92.6	415.8	
CO4 MVI-1SB-225-4/1	3355300	30	460V	~3	6" 300#	435	92	100	61.1	103.57	57.76	57.76	62.17	4653.15	34.2	139.4	
CO4 MVI-1SB-225-4	3355301	30	460V	~3	6" 300#	435	92	100	61.1	103.57	57.76	57.76	62.17	4653.23	34.2	139.4	
CO4 MVI-1SB-225-5/2	3355302	40	460V	~3	6" 300#	435	101	109	91.1	112.57	57.76	60.28	67.87	5160.61	46.3	197.8	
CO4 MVI-1SB-225-5/1	3355303	40	460V	~3	6" 300#	435	101	109	91.1	112.57	57.76	60.28	67.87	5160.61	46.3	197.8	
CO4 MVI-1SB-225-5	3355304	40	460V	~3	6" 300#	435	101	109	91.1	112.57	57.76	60.28	67.87	5160.61	46.3	197.8	
CO4 MVI-1SB-225-6/2	3355305	50	460V	~3	6" 300#	435	101	109	91.1	112.57	57.76	60.28	71.02	5403.57	56.1	243.4	
CO4 MVI-1SB-225-6	3355306	50	460V	~3	6" 300#	435	101	109	91.1	112.57	57.76	60.28	71.02	5403.73	56.1	243.4	
CO4 MVI-1SB-225-7/2	3355307	50	460V	~3	6" 300#	435	101	109	91.1	112.57	57.76	60.28	74.17	5435.89	56.1	243.4	
CO4 MVI-1SB-225-7	3355308	60	460V	~3	6" 300#	435	121	129	92.1	132.57	57.76	61.4	77.9	6709.49	67	291	
CO4 MVI-1SB-225-8/1	3355309	60	460V	~3	6" 300#	435	121	129	92.1	132.57	57.76	61.4	81.05	6737.61	67	291	
CO4 MVI-1SB-225-4/1	3355590	30	575V	~3	6" 300#	435	92	100	91.1	103.57	57.76	59.28	62.17	4483.99	27.4	127	
CO4 MVI-1SB-225-4	3355591	30	575V	~3	6" 300#	435	92	100	91.1	103.57	57.76	59.28	62.17	4484.07	27.4	127	
CO4 MVI-1SB-225-5/2	3355592	40	575V	~3	6" 300#	435	101	109	91.1	112.57	57.76	60.28	67.87	5176.61	37	172.6	
CO4 MVI-1SB-225-5/1	3355593	40	575V	~3	6" 300#	435	101	109	91.1	112.57	57.76	60.28	67.87	5176.61	37	172.6	
CO4 MVI-1SB-225-5	3355594	40	575V	~3	6" 300#	435	101	109	91.1	112.57	57.76	60.28	67.87	5176.61	37	172.6	
CO4 MVI-1SB-225-6/2	3355595	50	575V	~3	6" 300#	435	101	109	103.1	112.57	57.76	60.28	71.02	5371.16	44.9	209	
CO4 MVI-1SB-225-6	3355596	50	575V	~3	6" 300#	435	101	109	103.1	112.57	57.76	60.28	71.02	5371.32	44.9	209	
CO4 MVI-1SB-225-7/2	3355597	50	575V	~3	6" 300#	435	101	109	103.1	112.57	57.76	60.28	74.17	5403.48	44.9	209	
CO4 MVI-1SB-225-7	3355598	60	575V	~3	6" 300#	435	121	129	104.1	132.57	56	59.64	77.9	6734.99	53.6	254.2	
CO4 MVI-1SB-225-8/1	3355599	60	575V	~3	6" 300#	435	121	129	104.1	132.57	56	59.64	81.05	6763.11	53.6	254.2	