

# Submittal Data Sheet

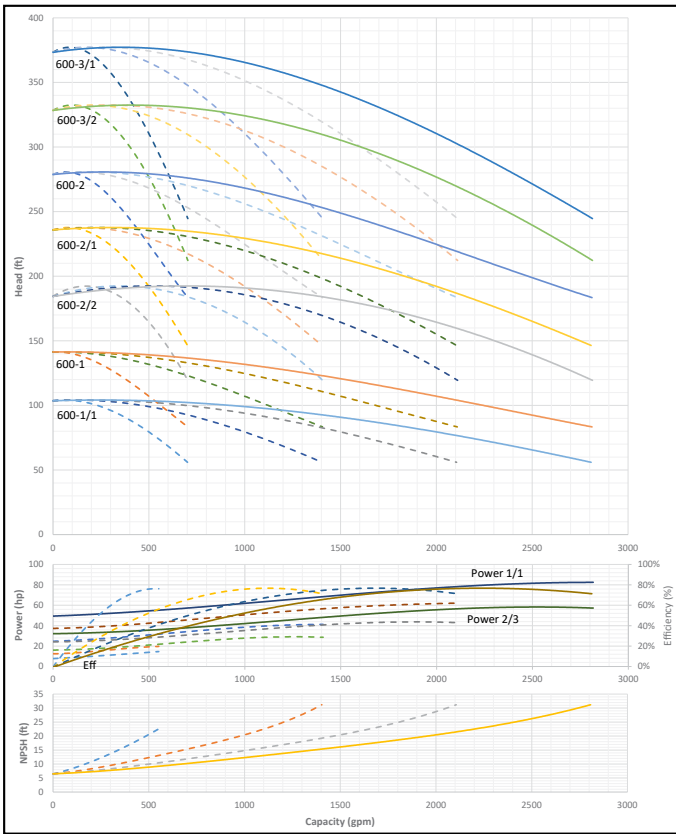
## Wilco-CO MVI - NSF 61/372 Pressure Boosting System



### CO4 MVI-600

|  |               |       |
|--|---------------|-------|
|  | Project:      |       |
|  | Engineer:     |       |
|  | Contractor:   |       |
|  | Submitted By: | Date: |
|  | Approved By:  | Date: |

| Tag # | Model #     | Flow | BOOST PSI | Min. Inlet PSI | HP/Pump | Phase | Voltage | RPM  |
|-------|-------------|------|-----------|----------------|---------|-------|---------|------|
|       | CO4 MVI-600 |      |           |                | 1       |       |         | 3600 |



#### Applications

- Water Supply
- Agriculture
- Washing / Sprinkling Systems
- Pressure Boosting
- Cooling Circuits
- Condensate Return

#### Materials of Construction

|                           |   |
|---------------------------|---|
| Volute                    | AISI 304 Stainless Steel with Cast Iron ANSI flanges  |
| Impeller                  | AISI 304 Stainless Steel  |
| Shaft                     | ANSI 431 Stainless Steel  |
| Elastomers                | EPDM  |
| Manifold                  | AISI 304 Stainless Steel  |
| Suction Isolation Valves  | 150# Cast Iron Wafer Butterfly, All Stainless Steel Wetted Components                             |
| Discharge Isolation Valve | 150# Cast Iron Wafer Butterfly, All Stainless Steel Wetted Components or 300# 304SS Ball Valve    |
| Check Valve               | Wafer Style, 316 Stainless Steel internals, non-slam, plunger type with EPDM seal/ cast iron body |
| Mechanical Seal           | Frame and Springs 304SS   |
| Pressure Transducers      | ¼" MNPT, 316 Stainless Steel  |
| Pressure Gauges           | ¼" MNPT, 304 Stainless Steel Housing with 316 Stainless Steel wetted parts                        |
| System Base               | Epoxy Coated A-500 Steel Tubing and A36 C-Channel/Plates  |

#### Technical Data - Operational Ranges

|                    |  |
|--------------------|--|
| Liquid Temp Range  | 5°F to 248°F (Min. 32 °F for Domestic Water) |
| Ambient Temp Range | +32°F to +104 °F                             |

#### Technical Data - Panel

|                           |  |
|---------------------------|--|
| Liquid Temp Range         | 208-230/460~3 or 575~3   |
| Enclosure                 | NEMA 3R up to 20 HP<br>NEMA 12 for 25 HP and above (NEMA 4 and 4X available upon request)  |
| Standard                  | Meets UL 508A  |
| Variable Frequency Drives | Danfoss FC-101:<br>• 1 HP to 3 HP 208-230V~1 IN / 208-230V~3 OUT<br>• 1 HP to 60 HP 208-230V~3<br>• 1 HP to 100 HP 460V~3<br>• 1 HP to 100 HP 575V~3 |

#### Technical Data - PLC

|                           |  |
|---------------------------|--|
| User Interface            | 7" Diagonal Color LCD Touchscreen                                    |
| Display Resolution        | 800 x 480 Pixels   |
| Supply Voltage            | 24VDC  |
| Max. Current Consumption  | 320mA@24V  |
| Number of Analog Inputs   | 4  |
| Number of Analog Outputs  | 4  |
| Number of Digital Inputs  | 18   |
| Number of Digital Outputs | 17   |
| Onboard Communications    | Modbus Protocol (Optional Gateways for BACnet, LonWorks, and CANbus) |
| Ethernet Port             | RJ45 port capable of transmitting data 10/100Mbps                    |
| Additional Ports          | 2.0 USB Port; Micro-SD Port  |

#### Motor Data

|                        |   |
|------------------------|---|
| Power Supply           | 208-230, 460, 575~3                             |
| Motor Enclosure        | Totally Enclosed Fan Cooled (TEFC)              |
| Motor Efficiency       | Nema Premium Efficiency - Meets NEMA 12-12 Rule |
| Enclosure Construction | Rolled Steel / Cast Iron                        |
| Motor Protection Index | IP54  |
| Insulation Class       | F   |

Approval Stamp

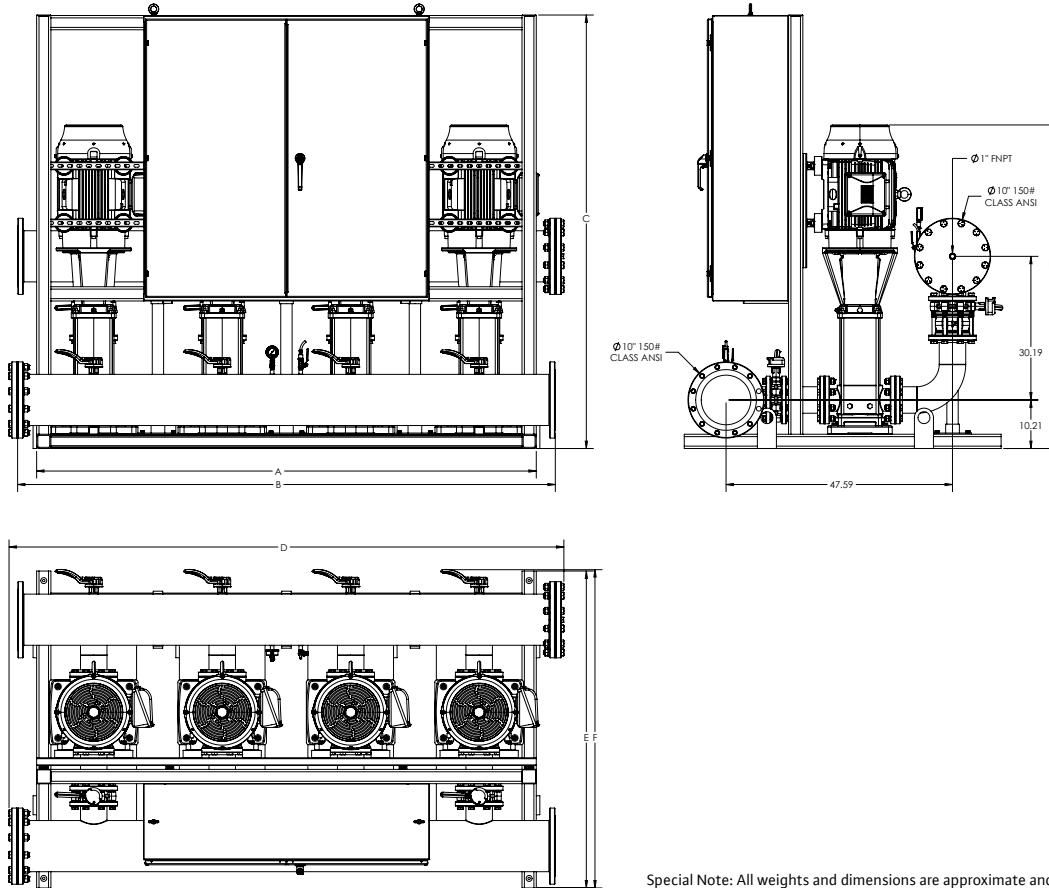
# Submittal Data Sheet

## Wilo-CO MVI - NSF 61/372 Pressure Boosting System



### CO4 MVI-600

#### 150# Discharge



Special Note: All weights and dimensions are approximate and should not be used as exact rough-in dimensions

### CO4 MVI-600

TEFC Motor Data  
(Per Motor)

| Model           | Article | HP | Voltage   | Phase | System Header Size (ANSI) | Pmax (PSI) | Dimensions - Inches (in) |     |       |        |       |       |       | System Weight (Lbs) | Motor FLA (per pump) |       | System FLA |
|-----------------|---------|----|-----------|-------|---------------------------|------------|--------------------------|-----|-------|--------|-------|-------|-------|---------------------|----------------------|-------|------------|
|                 |         |    |           |       |                           |            | A                        | B   | C     | D      | E     | F     | H     |                     | (A)                  |       |            |
| CO4 MVI-600-1/1 | 3353626 | 20 | 208V-230V | ~3    | 10" 150#                  | 232        | 96                       | 104 | 91.1  | 107.56 | 66.59 | 66.93 | 56.87 | 4345.89             | 50.2-45.4            | 211.8 |            |
| CO4 MVI-600-1   | 3353627 | 25 | 208V-230V | ~3    | 10" 150#                  | 232        | 96                       | 104 | 91.1  | 107.56 | 66.59 | 66.93 | 59.13 | 4659.29             | 63.0-57.6            | 261   |            |
| CO4 MVI-600-2/2 | 3353628 | 40 | 208V-230V | ~3    | 10" 150#                  | 232        | 105                      | 113 | 103.1 | 116.56 | 66.59 | 66.93 | 67.8  | 5517.15             | 101-92.6             | 415.8 |            |
| CO4 MVI-600-2/1 | 3353629 | 40 | 208V-230V | ~3    | 10" 150#                  | 232        | 105                      | 113 | 103.1 | 116.56 | 66.59 | 66.93 | 67.8  | 5517.15             | 101-92.6             | 415.8 |            |
| CO4 MVI-600-1/1 | 3354115 | 20 | 460V      | ~3    | 10" 150#                  | 232        | 96                       | 104 | 65.1  | 107.56 | 66.59 | 66.93 | 56.87 | 4525.21             | 22.7                 | 99.8  |            |
| CO4 MVI-600-1   | 3354116 | 25 | 460V      | ~3    | 10" 150#                  | 232        | 96                       | 104 | 65.1  | 107.56 | 66.59 | 66.93 | 59.13 | 4838.61             | 28.8                 | 118.2 |            |
| CO4 MVI-600-2/2 | 3354117 | 40 | 460V      | ~3    | 10" 150#                  | 232        | 105                      | 113 | 91.1  | 116.56 | 66.59 | 66.93 | 67.8  | 5475.3              | 46.3                 | 197.8 |            |
| CO4 MVI-600-2/1 | 3354118 | 40 | 460V      | ~3    | 10" 150#                  | 232        | 105                      | 113 | 91.1  | 116.56 | 66.59 | 66.93 | 67.8  | 5475.3              | 46.3                 | 197.8 |            |
| CO4 MVI-600-2   | 3354119 | 50 | 460V      | ~3    | 10" 150#                  | 232        | 105                      | 113 | 91.1  | 116.56 | 66.59 | 66.93 | 67.8  | 5687.26             | 56.1                 | 243.4 |            |
| CO4 MVI-600-3/2 | 3354120 | 60 | 460V      | ~3    | 10" 150#                  | 232        | 125                      | 133 | 92.1  | 136.56 | 66.59 | 66.8  | 77.66 | 7062.88             | 67                   | 291   |            |
| CO4 MVI-600-3/1 | 3354121 | 60 | 460V      | ~3    | 10" 150#                  | 232        | 125                      | 133 | 92.1  | 136.56 | 66.59 | 66.8  | 77.66 | 7063.56             | 67                   | 291   |            |
| CO4 MVI-600-1/1 | 3354604 | 20 | 575V      | ~3    | 10" 150#                  | 232        | 96                       | 104 | 75.1  | 107.56 | 66.59 | 66.93 | 56.87 | 4084.24             | 18.2                 | 86.6  |            |
| CO4 MVI-600-1   | 3354605 | 25 | 575V      | ~3    | 10" 150#                  | 232        | 96                       | 104 | 91.1  | 107.56 | 66.59 | 66.93 | 59.13 | 4631.29             | 23                   | 103.8 |            |
| CO4 MVI-600-2/2 | 3354606 | 40 | 575V      | ~3    | 10" 150#                  | 232        | 105                      | 113 | 91.1  | 116.56 | 66.59 | 66.93 | 67.8  | 5491.3              | 37                   | 172.6 |            |
| CO4 MVI-600-2/1 | 3354607 | 40 | 575V      | ~3    | 10" 150#                  | 232        | 105                      | 113 | 91.1  | 116.56 | 66.59 | 66.93 | 67.8  | 5491.3              | 37                   | 172.6 |            |
| CO4 MVI-600-2   | 3354608 | 50 | 575V      | ~3    | 10" 150#                  | 232        | 105                      | 113 | 103.1 | 116.56 | 66.59 | 66.93 | 67.8  | 5657.11             | 44.9                 | 209   |            |
| CO4 MVI-600-3/2 | 3354609 | 60 | 575V      | ~3    | 10" 150#                  | 232        | 125                      | 133 | 104.1 | 136.56 | 66.59 | 66.8  | 77.66 | 7096.6              | 53.6                 | 254.2 |            |
| CO4 MVI-600-3/1 | 3354610 | 60 | 575V      | ~3    | 10" 150#                  | 232        | 125                      | 133 | 104.1 | 136.56 | 66.59 | 66.8  | 77.66 | 7097.28             | 53.6                 | 254.2 |            |