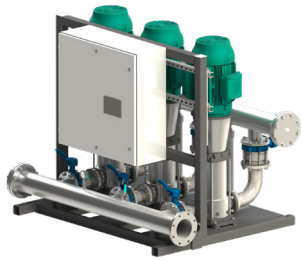


Submittal Data Sheet

Wilo-CO MVI - NSF 61/372 Pressure Boosting System

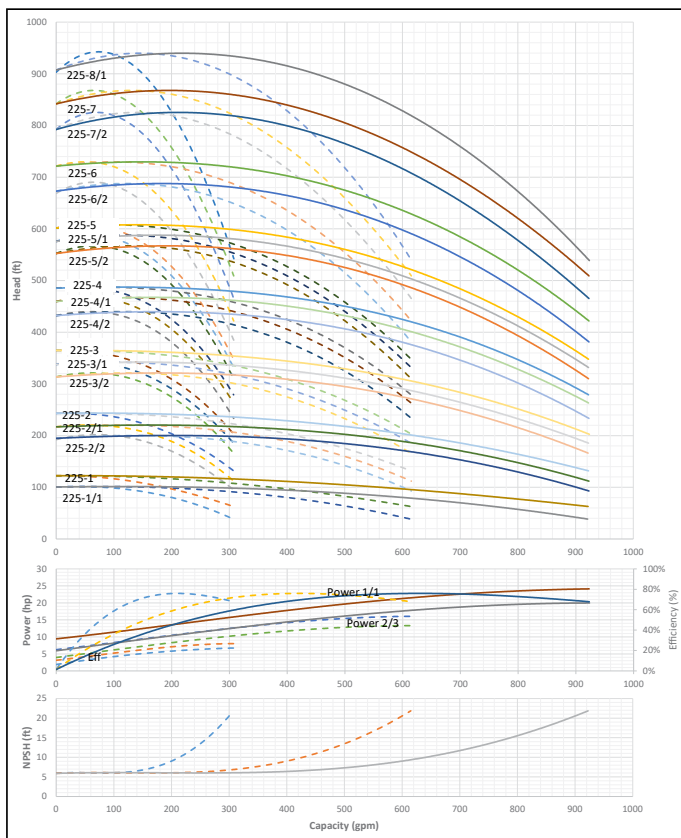


CO3 MVI-225



Project:	
Engineer:	
Contractor:	
Submitted By:	Date:
Approved By:	Date:

Tag #	Model #	Flow	BOOST PSI	Min. Inlet PSI	HP/Pump	Phase	Voltage	RPM
	CO3 MVI-225				1			3600



Applications	
• Water Supply	• Pressure Boosting
• Agriculture	• Cooling Circuits
• Washing / Sprinkling Systems	• Condensate Return

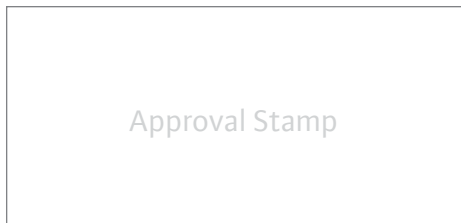
Materials of Construction	
Volute	AISI 304 Stainless Steel with Cast Iron ANSI flanges
Impeller	AISI 304 Stainless Steel
Shaft	ANSI 431 Stainless Steel
Elastomers	EPDM
Manifold	AISI 304 Stainless Steel
Suction Isolation Valves	150# Cast Iron Wafer Butterfly, All Stainless Steel Wetted Components
Discharge Isolation Valve	150# Cast Iron Wafer Butterfly, All Stainless Steel Wetted Components or 300# 304SS Ball Valve
Check Valve	Wafer Style, 316 Stainless Steel internals, non-slam, plunger type with EPDM seal/ cast iron body
Mechanical Seal	Frame and Springs 304SS
Pressure Transducers	¼" MNPT, 316 Stainless Steel
Pressure Gauges	¼" MNPT, 304 Stainless Steel Housing with 316 Stainless Steel wetted parts
System Base	Epoxy Coated A-500 Steel Tubing and A36 C-Channel/Plates

Technical Data - Operational Ranges	
Liquid Temp Range	5°F to 248°F (Min. 32 °F for Domestic Water)
Ambient Temp Range	+32°F to +104 °F

Technical Data - Panel	
Liquid Temp Range	208-230/460-3 or 575-3
Enclosure	NEMA 3R up to 20 HP NEMA 12 for 25 HP and above (NEMA 4 and 4X available upon request)
Standard	Meets UL 508A
Variable Frequency Drives	Danfoss FC-101: • 1 HP to 3 HP 208-230V-1 IN / 208-230V-3 OUT • 1 HP to 60 HP 208-230V-3 • 1 HP to 100 HP 460V-3 • 1 HP to 100 HP 575V-3

Technical Data - PLC	
User Interface	7" Diagonal Color LCD Touchscreen
Display Resolution	800 x 480 Pixels
Supply Voltage	24VDC
Max. Current Consumption	320mA@24V
Number of Analog Inputs	4
Number of Analog Outputs	4
Number of Digital Inputs	18
Number of Digital Outputs	17
Onboard Communications	Modbus Protocol (Optional Gateways for BACnet, LonWorks, and CANbus)
Ethernet Port	RJ45 port capable of transmitting data 10/100Mbps
Additional Ports	2.0 USB Port; Micro-SD Port

Motor Data	
Power Supply	208-230, 460, 575-3
Motor Enclosure	Totally Enclosed Fan Cooled (TEFC)
Motor Efficiency	Nema Premium Efficiency - Meets NEMA 12-12 Rule
Enclosure Construction	Rolled Steel/ Cast Iron
Motor Protection Index	IP54
Insulation Class	F



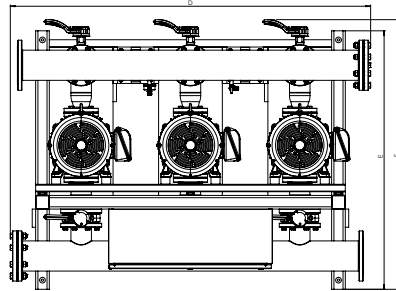
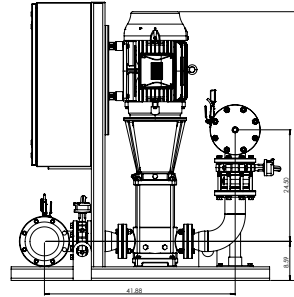
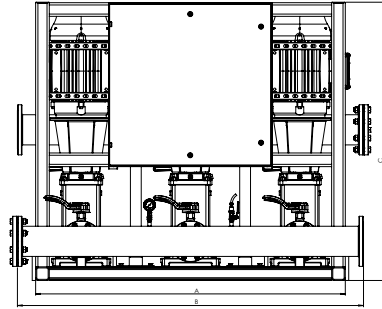
Submittal Data Sheet

Wilo-CO MVI - NSF 61/372 Pressure Boosting System



CO3 MVI-225

150# Discharge



Special Note: All weights and dimensions are approximate and should not be used as exact rough-in dimensions

CO3 MVI-225

TEFC Motor Data (Per Motor)

Model	Article	HP	Voltage	Phase	System Header Size (ANSI)	Pmax (PSI)	Dimensions - Inches (in)								System Weight (Lbs)	TEFC Motor Data (Per Motor)	
							A (in)	B (in)	C (in)	D (in)	E (in)	F (in)	H (in)	Motor FLA (per pump)		System FLA	
CO3 MVI-225-1/1	3353434	7.5	208V-230V	~3	6" 150#	232	51.5	59.5	61.1	62.63	56.76	59.16	41.92	1920.92	19.2-17.3	64-55	
CO3 MVI-225-1	3353435	7.5	208V-230V	~3	6" 150#	232	51.5	59.5	61.1	62.63	56.76	59.16	41.92	1921.01	19.2-17.3	64-55	
CO3 MVI-225-2/2	3353436	15	208V-230V	~3	6" 150#	232	68	76	61.1	79.13	56.76	59.16	53.53	2900.63	38.5-34.8	124-115.6	
CO3 MVI-225-2/1	3353437	15	208V-230V	~3	6" 150#	232	68	76	61.1	79.13	56.76	59.16	53.53	2900.69	38.5-34.8	124-115.6	
CO3 MVI-225-2	3353438	15	208V-230V	~3	6" 150#	232	68	76	61.1	79.13	56.76	59.16	53.53	2900.75	38.5-34.8	124-115.6	
CO3 MVI-225-3/2	3353439	20	208V-230V	~3	6" 150#	232	68	76	69.1	79.13	56.76	59.16	56.68	2707.64	50.2-45.4	159.1	
CO3 MVI-225-3/1	3353440	25	208V-230V	~3	6" 150#	232	68	76	69.1	79.13	56.76	59.16	58.94	2942.21	63.0-57.6	196	
CO3 MVI-225-3	3353441	25	208V-230V	~3	6" 150#	232	68	76	69.1	79.13	56.76	59.16	58.94	2942.3	63.0-57.6	196	
CO3 MVI-225-4/2	3353442	30	208V-230V	~3	6" 150#	232	68	76	87.1	79.13	56.79	60.64	62.09	3076.64	76.7-68.4	229	
CO3 MVI-225-1/1	3353923	7.5	460V	~3	6" 150#	232	51.5	59.5	61.1	62.63	56.76	59.16	41.92	1919.54	8.67	34	
CO3 MVI-225-1	3353924	7.5	460V	~3	6" 150#	232	51.5	59.5	61.1	62.63	56.76	59.16	41.92	1919.63	8.67	34	
CO3 MVI-225-2/2	3353925	15	460V	~3	6" 150#	232	68	76	61.1	79.13	56.76	59.16	53.53	2630.2	17.4	56.2	
CO3 MVI-225-2/1	3353926	15	460V	~3	6" 150#	232	68	76	61.1	79.13	56.76	59.16	53.53	2630.26	17.4	56.2	
CO3 MVI-225-2	3353927	15	460V	~3	6" 150#	232	68	76	61.1	79.13	56.76	59.16	53.53	2630.32	17.4	56.2	
CO3 MVI-225-3/2	3353928	20	460V	~3	6" 150#	232	68	76	61.1	79.13	56.76	59.16	56.68	2678.44	22.7	75.1	
CO3 MVI-225-3/1	3353929	25	460V	~3	6" 150#	232	68	76	61.1	79.13	56.76	59.16	58.94	3183.44	28.8	88.9	
CO3 MVI-225-3	3353930	25	460V	~3	6" 150#	232	68	76	61.1	79.13	56.76	59.16	58.94	3183.53	28.8	88.9	
CO3 MVI-225-4/2	3353931	30	460V	~3	6" 150#	232	68	76	61.1	79.13	56.76	59.16	62.09	3240.65	34.2	104.8	
CO3 MVI-225-1/1	3354412	7.5	575V	~3	6" 150#	232	51.5	59.5	61.1	62.63	56.76	59.16	41.92	1926.92	6.94	25.9	
CO3 MVI-225-1	3354413	7.5	575V	~3	6" 150#	232	51.5	59.5	61.1	62.63	56.76	59.16	41.92	1927.01	6.94	25.9	
CO3 MVI-225-2/2	3354414	15	575V	~3	6" 150#	232	68	76	61.1	79.13	56.76	59.16	53.53	2793.63	13.8	48.1	
CO3 MVI-225-2/1	3354415	15	575V	~3	6" 150#	232	68	76	61.1	79.13	56.76	59.16	53.53	2793.69	13.8	48.1	
CO3 MVI-225-2	3354416	15	575V	~3	6" 150#	232	68	76	61.1	79.13	56.76	59.16	53.53	2793.75	13.8	48.1	
CO3 MVI-225-3/2	3354417	20	575V	~3	6" 150#	232	68	76	61.1	79.13	56.76	59.16	56.68	2841.87	18.2	65.2	
CO3 MVI-225-3/1	3354418	25	575V	~3	6" 150#	232	68	76	69.1	79.13	56.76	59.16	58.94	2921.21	23	78.1	
CO3 MVI-225-3	3354419	25	575V	~3	6" 150#	232	68	76	69.1	79.13	56.76	59.16	58.94	2921.3	23	78.1	
CO3 MVI-225-4/2	3354420	30	575V	~3	6" 150#	232	68	76	69.1	79.13	56.76	59.16	62.09	3002.42	27.4	95.5	

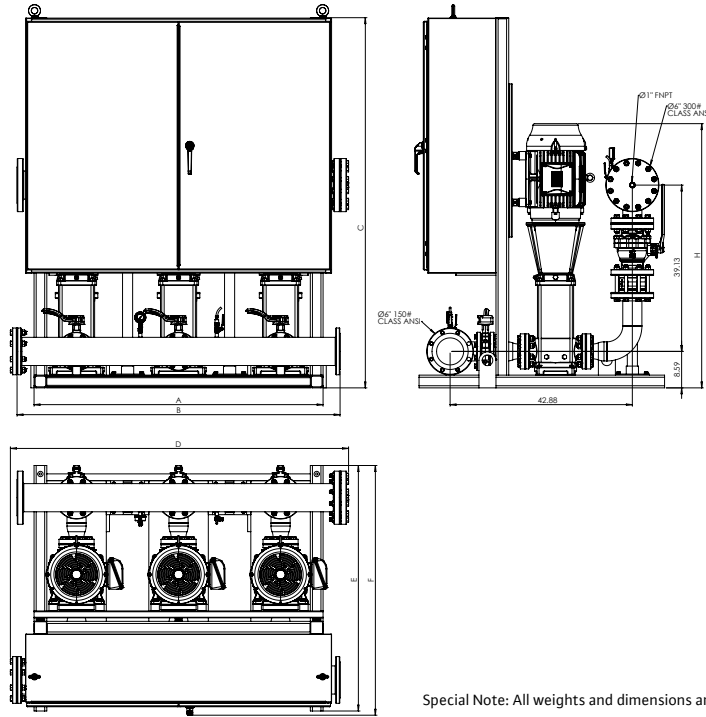
Submittal Data Sheet

Wilo-CO MVI - NSF 61/372 Pressure Boosting System



CO3 MVI-225

300# Discharge



Special Note: All weights and dimensions are approximate and should not be used as exact rough-in dimensions

CO3 MVI-225

TEFC Motor Data (Per Motor)

Model	Article	HP	Voltage	Phase	System Header Size (ANSI)	Pmax (PSI)	Dimensions - Inches (in)								System Weight (Lbs)	Motor FLA (per pump)	System FLA
							A (in)	B (in)	C (in)	D (in)	E (in)	F (in)	H (in)	(A)			
CO3 MVI-225-4/1	3353443	30	208V-230V	~3	6" 300#	435	68	76	87.1	79.57	57.76	58.75	62.09	3415.77	76.7-68.4	229	
CO3 MVI-225-4	3353444	30	208V-230V	~3	6" 300#	435	68	76	87.1	79.57	57.76	58.75	62.09	3415.83	76.7-68.4	229	
CO3 MVI-225-5/2	3353445	40	208V-230V	~3	6" 300#	435	74	82	87.1	85.57	57.76	59.74	67.79	3923.22	101-92.6	312.1	
CO3 MVI-225-5/1	3353446	40	208V-230V	~3	6" 300#	435	74	82	87.1	85.57	57.76	59.74	67.79	3923.22	101-92.6	312.1	
CO3 MVI-225-5	3353447	40	208V-230V	~3	6" 300#	435	74	82	87.1	85.57	57.76	59.74	67.79	3923.22	101-92.6	312.1	
CO3 MVI-225-4/1	3353932	30	460V	~3	6" 300#	435	68	76	61.1	79.57	57.76	57.76	62.09	3579.78	34.2	104.8	
CO3 MVI-225-4	3353933	30	460V	~3	6" 300#	435	68	76	61.1	79.57	57.76	57.76	62.09	3579.84	34.2	104.8	
CO3 MVI-225-5/2	3353934	40	460V	~3	6" 300#	435	74	82	69.1	85.57	57.76	57.76	67.79	3845.93	46.3	148.6	
CO3 MVI-225-5/1	3353935	40	460V	~3	6" 300#	435	74	82	69.1	85.57	57.76	57.76	67.79	3845.93	46.3	148.6	
CO3 MVI-225-5	3353936	40	460V	~3	6" 300#	435	74	82	69.1	85.57	57.76	57.76	67.79	3845.93	46.3	148.6	
CO3 MVI-225-6/2	3353937	50	460V	~3	6" 300#	435	74	82	69.1	85.57	57.76	57.76	70.94	4028.15	56.1	182.8	
CO3 MVI-225-6	3353938	50	460V	~3	6" 300#	435	74	82	69.1	85.57	57.76	57.76	70.94	4028.27	56.1	182.8	
CO3 MVI-225-7/2	3353939	50	460V	~3	6" 300#	435	74	82	69.1	85.57	57.76	57.76	74.09	4052.39	56.1	182.8	
CO3 MVI-225-7	3353940	60	460V	~3	6" 300#	435	86	94	71.1	97.57	57.76	57.76	76.82	4940.66	67	218.5	
CO3 MVI-225-8/1	3353941	60	460V	~3	6" 300#	435	86	94	74.1	97.57	57.76	57.76	79.97	4966.12	67	218.5	
CO3 MVI-225-4/1	3354421	30	575V	~3	6" 300#	435	68	76	69.1	79.57	57.76	57.76	62.09	3341.55	27.4	95.5	
CO3 MVI-225-4	3354422	30	575V	~3	6" 300#	435	68	76	69.1	79.57	57.76	57.76	62.09	3341.61	27.4	95.5	
CO3 MVI-225-5/2	3354423	40	575V	~3	6" 300#	435	74	82	69.1	85.57	57.76	57.76	67.79	3857.93	37	129.7	
CO3 MVI-225-5/1	3354424	40	575V	~3	6" 300#	435	74	82	69.1	85.57	57.76	57.76	67.79	3857.93	37	129.7	
CO3 MVI-225-5	3354425	40	575V	~3	6" 300#	435	74	82	69.1	85.57	57.76	57.76	67.79	3857.93	37	129.7	
CO3 MVI-225-6/2	3354426	50	575V	~3	6" 300#	435	74	82	89.1	85.57	57.76	59.75	70.94	4049.95	44.9	157	
CO3 MVI-225-6	3354427	50	575V	~3	6" 300#	435	74	82	89.1	85.57	57.76	59.75	70.94	4050.07	44.9	157	
CO3 MVI-225-7/2	3354428	50	575V	~3	6" 300#	435	74	82	89.1	85.57	57.76	59.75	74.09	4074.19	44.9	157	
CO3 MVI-225-7	3354429	60	575V	~3	6" 300#	435	86	94	87.1	97.57	57.76	60.75	76.82	5010.3	53.6	190.9	
CO3 MVI-225-8/1	3354430	60	575V	~3	6" 300#	435	86	94	91.1	97.57	57.76	60.75	79.97	5037.23	53.6	190.9	