

Submittal Data Sheet

Wilco-CO MVI – NSF 61/372 Pressure Boosting System

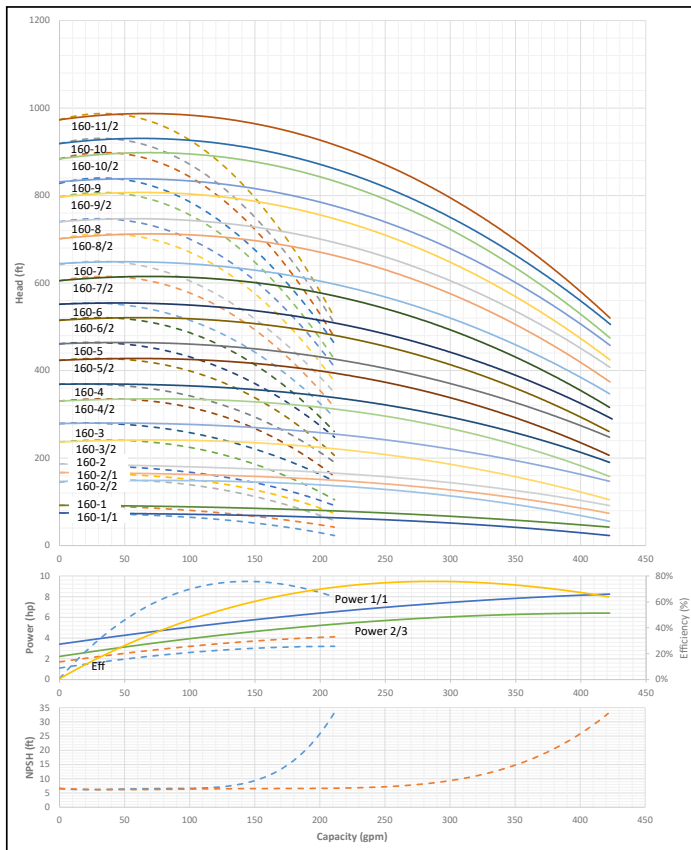


CO2 MVI-160



Project:	
Engineer:	
Contractor:	
Submitted By:	Date:
Approved By:	Date:

Tag #	Model #	Flow	BOOST PSI	Min. Inlet PSI	HP/Pump	Phase	Voltage	RPM
	CO2 MVI-160							3600



Applications

- Water Supply
- Agriculture
- Washing / Sprinkling Systems
- Pressure Boosting
- Cooling Circuits
- Condensate Return

Materials of Construction

Volute	AISI 304 Stainless Steel with Cast Iron ANSI flanges
Impeller	AISI 304 Stainless Steel
Shaft	ANSI 431 Stainless Steel
Elastomers	EPDM
Manifold	AISI 304 Stainless Steel
Suction Isolation Valves	150# Cast Iron Wafer Butterfly, All Stainless Steel Wetted Components
Discharge Isolation Valve	150# Cast Iron Wafer Butterfly, All Stainless Steel Wetted Components or 300# 304SS Ball Valve
Check Valve	Wafer Style, 316 Stainless Steel internals, non-slam, plunger type with EPDM seal/ cast iron body
Mechanical Seal	Frame and Springs 304SS
Pressure Transducers	¼" MNPT, 316 Stainless Steel
Pressure Gauges	¼" MNPT, 304 Stainless Steel Housing with 316 Stainless Steel wetted parts
System Base	Epoxy Coated A-500 Steel Tubing and A36 C-Channel/Plates

Motor Data

Power Supply	208-230, 460, 575~3
Motor Enclosure	Totally Enclosed Fan Cooled (TEFC)
Motor Efficiency	Nema Premium Efficiency – Meets NEMA 12-12 Rule
Enclosure Construction	Rolled Steel/ Cast Iron
Motor Protection Index	IP54
Insulation Class	F

Technical Data – Operational Ranges

Liquid Temp Range	5°F to 248°F (Min. 32 °F for Domestic Water)
Ambient Temp Range	+32°F to +104 °F

Technical Data – Panel

Voltage	208-230/460~3 or 575~3
Enclosure	NEMA 3R up to 20 HP NEMA 12 for 25 HP and above (NEMA 4 and 4X available upon request)
Standard	Meets UL 508A
Variable Frequency Drives	Danfoss FC-101: • 1 HP to 3 HP 208-230V~1 IN / 208-230V~3 OUT • 1 HP to 60 HP 208-230V~3 • 1 HP to 100 HP 460V~3 • 1 HP to 100 HP 575V~3

Technical Data – PLC

User Interface	7" Diagonal Color LCD Touchscreen
Display Resolution	800 x 480 Pixels
Supply Voltage	24VDC
Max. Current Consumption	320mA@24V
Number of Analog Inputs	4
Number of Analog Outputs	4
Number of Digital Inputs	18
Number of Digital Outputs	17
Onboard Communications	Modbus Protocol (Optional Gateways for BACnet, LonWorks, and CANbus)
Ethernet Port	RJ45 port capable of transmitting data 10/100Mbps
Additional Ports	2.0 USB Port; Micro-SD Port

Approval Stamp

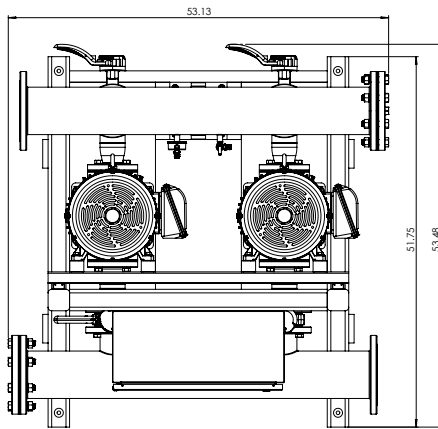
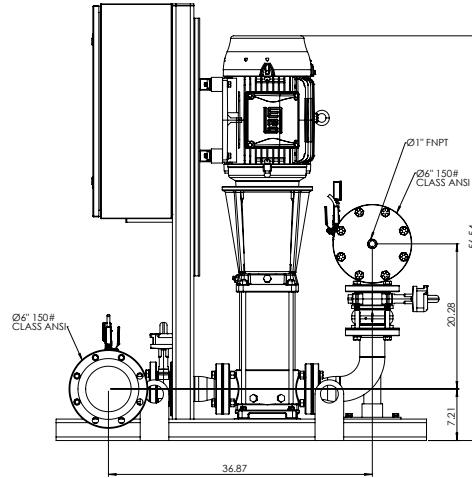
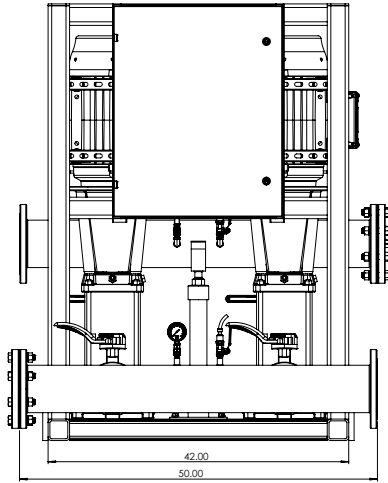
Submittal Data Sheet

Wilo-CO MVI - NSF 61/372 Pressure Boosting System



CO2 MVI-160

150# Discharge



Special Note: All weights and dimensions are approximate and should not be used as exact rough-in dimensions

CO2 MVI-160

TEFC Motor Data
(Per Motor)

Model	Article	HP	Voltage	Phase	System Header Size (ANSI)	Pmax (PSI)	Dimensions - Inches (in)								System Weight (Lbs)	Motor FLA (per pump)		System FLA
							A (in)	B (in)	C (in)	D (in)	E (in)	F (in)	H (in)	(A)				
CO2 MVI-160-1/1	3353052	3	208V-230V	~1 IN / ~3 OUT	6" 150#	232	33.75	41.75	61	44.88	51.75	53.44	36.48	1059.7	8.12-7.34	31.4		
CO2 MVI-160-1/1	3353249	3	208V-230V	~3	6" 150#	232	33.75	41.75	61	44.88	51.75	53.44	36.48	1165.32	8.12-7.34	20.2		
CO2 MVI-160-1	3353250	5	208V-230V	~3	6" 150#	232	33.75	41.75	61	44.88	51.75	53.44	38.06	1195.72	13.1-11.8	31.4		
CO2 MVI-160-2/2	3353251	7.5	208V-230V	~3	6" 150#	232	33.75	41.75	61	44.88	51.75	53.44	42.51	1333.22	19.2-17.3	43-37		
CO2 MVI-160-2/1	3353252	7.5	208V-230V	~3	6" 150#	232	33.75	41.75	61	44.88	51.75	53.44	42.51	1333.22	19.2-17.3	43-37		
CO2 MVI-160-2	3353253	7.5	208V-230V	~3	6" 150#	232	33.75	41.75	61	44.88	51.75	53.44	42.51	1333.22	19.2-17.3	43-37		
CO2 MVI-160-3/2	3353254	10	208V-230V	~3	6" 150#	232	33.75	41.75	61	44.88	51.75	53.44	46.81	1400.52	25.4-23	57.6-49		
CO2 MVI-160-3/2	3353255	15	208V-230V	~3	6" 150#	232	42	50	61	53.13	51.75	53.44	53.72	1830.88	38.5-34.8	83-77.4		
CO2 MVI-160-4/2	3353256	15	208V-230V	~3	6" 150#	232	42	50	61	53.13	51.75	53.44	56.47	1843.92	38.5-34.8	83-77.4		
CO2 MVI-160-4	3353257	15	208V-230V	~3	6" 150#	232	42	50	61	53.13	51.75	53.44	56.47	1844.1	38.5-34.8	83-77.4		
CO2 MVI-160-5/2	3353258	20	208V-230V	~3	6" 150#	232	52	50	67	53.13	51.75	53.44	59.23	2045.42	50.2-45.4	106.4		
CO2 MVI-160-5	3353259	20	208V-230V	~3	6" 150#	232	52	50	67	53.13	51.75	53.44	59.23	2045.86	50.2-45.4	106.4		
CO2 MVI-160-1/1	3353738	3	460V	~3	6" 150#	232	33.75	41.75	61	44.88	51.75	53.44	36.48	1159.12	3.67	10.6		
CO2 MVI-160-1	3353739	5	460V	~3	6" 150#	232	33.75	41.75	61	44.88	51.75	53.44	38.06	1195.72	5.9	17.4		
CO2 MVI-160-2/2	3353740	7.5	460V	~3	6" 150#	232	33.75	41.75	61	44.88	51.75	53.44	42.51	1311.62	8.67	34.2		
CO2 MVI-160-2/1	3353741	7.5	460V	~3	6" 150#	232	33.75	41.75	61	44.88	51.75	53.44	42.51	1311.62	8.67	34.2		

Submittal Data Sheet

Wilco-CO MVI - NSF 61/372 Pressure Boosting System



CO2 MVI-160 150# Discharge															TEFC Motor Data (Per Motor)	
															Motor FLA (per pump)	System FLA
															Dimensions - Inches (in)	
Model	Article	HP	Voltage	Phase	System Header Size (ANSI)	Pmax (PSI)	A (in)	B (in)	C (in)	D (in)	E (in)	F (in)	H (in)	System Weight (Lbs)	(A)	
CO2 MVI-160-2	3353742	7.5	460V	~3	6" 150#	232	33.75	41.75	61	44.88	51.75	53.44	42.51	1311.62	8.67	34.2
CO2 MVI-160-3/2	3353743	10	460V	~3	6" 150#	232	33.75	41.75	61	44.88	51.75	53.44	46.81	1378.92	11.5	29
CO2 MVI-160-3/2	3353744	15	460V	~3	6" 150#	232	42	50	61	53.13	51.75	53.44	53.72	1790.96	17.4	37.8
CO2 MVI-160-4/2	3353745	15	460V	~3	6" 150#	232	42	50	61	53.13	51.75	53.44	56.47	1804	17.4	37.8
CO2 MVI-160-4	3353746	15	460V	~3	6" 150#	232	42	50	61	53.13	51.75	53.44	56.47	1804.18	17.4	37.8
CO2 MVI-160-5/2	3353747	20	460V	~3	6" 150#	232	42	50	61	53.13	51.75	53.44	59.23	1833.4	22.7	50.4
CO2 MVI-160-5	3353748	20	460V	~3	6" 150#	232	42	50	61	53.13	51.75	53.44	59.23	1833.84	22.7	50.4
CO2 MVI-160-1/1	3354227	3	575V	~3	6" 150#	232	33.75	41.75	61	44.88	51.75	53.44	36.48	1181.72	2.9	8
CO2 MVI-160-1	3354228	5	575V	~3	6" 150#	232	33.75	41.75	61	44.88	51.75	53.44	38.06	1211.92	4.72	12.2
CO2 MVI-160-2/2	3354229	7.5	575V	~3	6" 150#	232	33.75	41.75	61	44.88	51.75	53.44	42.51	1331.62	6.94	17.6
CO2 MVI-160-2/1	3354230	7.5	575V	~3	6" 150#	232	33.75	41.75	61	44.88	51.75	53.44	42.51	1331.62	6.94	17.6
CO2 MVI-160-2	3354231	7.5	575V	~3	6" 150#	232	33.75	41.75	61	44.88	51.75	53.44	42.51	1331.62	6.94	17.6
CO2 MVI-160-3/2	3354232	10	575V	~3	6" 150#	232	33.75	41.75	61	44.88	51.75	53.44	46.81	1402.92	9.2	23.8
CO2 MVI-160-3/2	3354233	15	575V	~3	6" 150#	232	42	50	61	53.13	51.75	53.44	53.72	1744.08	13.8	32.4
CO2 MVI-160-4/2	3354234	15	575V	~3	6" 150#	232	42	50	61	53.13	51.75	53.44	56.47	1757.12	13.8	32.4
CO2 MVI-160-4	3354235	15	575V	~3	6" 150#	232	42	50	61	53.13	51.75	53.44	56.47	1757.3	13.8	32.4
CO2 MVI-160-5/2	3354236	20	575V	~3	6" 150#	232	42	50	61	53.13	51.75	53.44	59.23	1786.52	18.2	43.8
CO2 MVI-160-5	3354237	20	575V	~3	6" 150#	232	42	50	61	53.13	51.75	53.44	59.23	1786.96	18.2	43.8

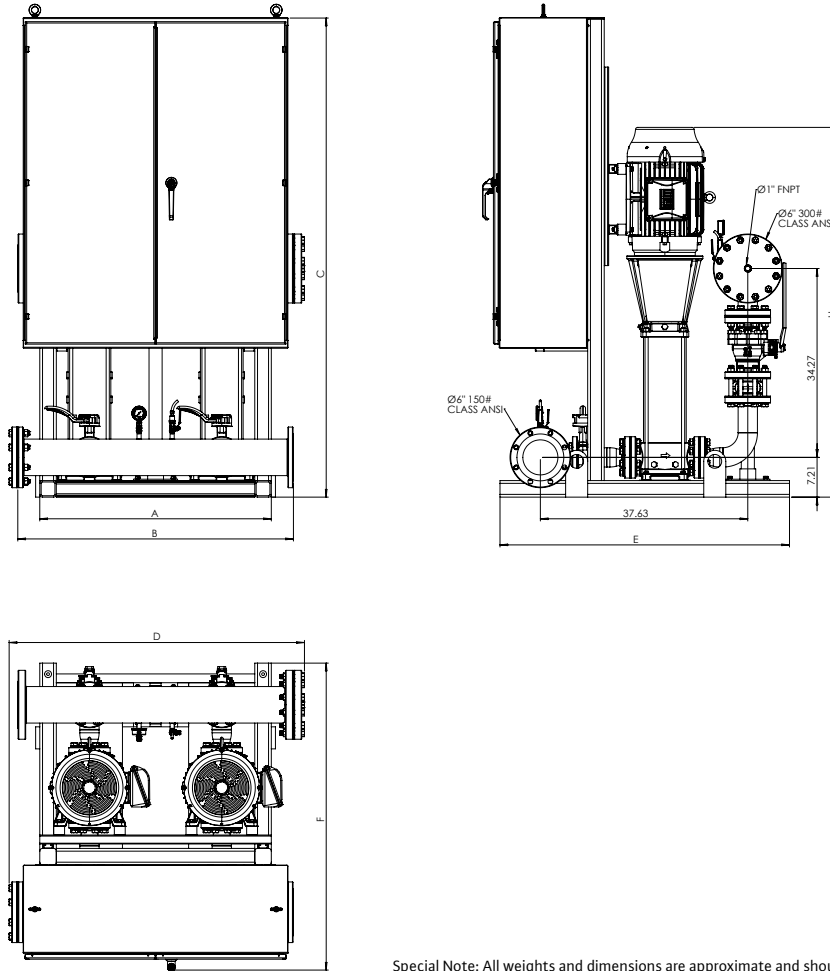
Submittal Data Sheet

Wilo-CO MVI - NSF 61/372 Pressure Boosting System



CO2 MVI-160

300# Discharge



Special Note: All weights and dimensions are approximate and should not be used as exact rough-in dimensions

CO2 MVI-160															TEFC Motor Data (Per Motor)		
Model	Article	HP	Voltage	Phase	System Header Size (ANSI)	Pmax (PSI)	Dimensions - Inches (in)								System Weight (Lbs)	Motor FLA (per pump)	System FLA
							A (in)	B (in)	C (in)	D (in)	E (in)	F (in)	H (in)	(A)			
CO2 MVI-160-6/2	3353260	25	208V-230V	~3	6" 300#	435	42	50	67	53.57	52.51	52.51	64.24	2396.04	63.0-57.6	131	
CO2 MVI-160-6	3353261	25	208V-230V	~3	6" 300#	435	42	50	67	53.57	52.51	52.51	64.24	2396.48	63.0-57.6	131	
CO2 MVI-160-7/2	3353262	30	208V-230V	~3	6" 300#	435	42	50	87	53.57	52.51	55.69	67	2821.69	76.7-68.4	153	
CO2 MVI-160-7	3353263	30	208V-230V	~3	6" 300#	435	42	50	87	53.57	52.51	55.69	67	2822.13	76.7-68.4	153	
CO2 MVI-160-8/2	3353264	30	208V-230V	~3	6" 300#	435	42	50	87	53.57	52.51	55.69	69.75	2836.05	76.7-68.4	153	
CO2 MVI-160-8	3353265	40	208V-230V	~3	6" 300#	435	45	53	87	56.57	52.62	56.7	72.3	3152.74	101-92.6	208.4	
CO2 MVI-160-9/2	3353266	40	208V-230V	~3	6" 300#	435	45	53	87	56.57	52.62	56.7	75.06	3164.74	101-92.6	208.4	
CO2 MVI-160-9	3353267	40	208V-230V	~3	6" 300#	435	45	53	87	56.57	52.62	56.7	75.06	3164.74	101-92.6	208.4	
CO2 MVI-160-10/2	3353268	40	208V-230V	~3	6" 300#	435	45	53	87	56.57	52.62	56.7	77.82	3176.74	101-92.6	208.4	
CO2 MVI-160-10	3353269	40	208V-230V	~3	6" 300#	435	45	53	87	56.57	52.62	56.7	77.82	3176.74	101-92.6	208.4	
CO2 MVI-160-11/2	3353270	40	208V-230V	~3	6" 300#	435	45	53	87	56.57	52.62	56.7	80.57	3188.74	101-92.6	208.4	
CO2 MVI-160-6/2	3353749	25	460V	~3	6" 300#	435	42	50	61	53.57	52.51	52.51	64.24	2221.39	28.8	59.6	
CO2 MVI-160-6	3353750	25	460V	~3	6" 300#	435	42	50	61	53.57	52.51	52.51	64.24	2221.83	28.8	59.6	
CO2 MVI-160-7/2	3353751	30	460V	~3	6" 300#	435	42	50	63	53.57	52.51	52.51	67	2258.72	34.2	70.2	
CO2 MVI-160-7	3353752	30	460V	~3	6" 300#	435	42	50	63	53.57	52.51	52.51	67	2259.16	34.2	70.2	
CO2 MVI-160-8/2	3353753	30	460V	~3	6" 300#	435	42	50	66	53.57	52.51	52.51	69.75	2277.46	34.2	70.2	
CO2 MVI-160-8	3353754	40	460V	~3	6" 300#	435	45	53	68	56.57	52.26	52.71	72.3	2761.27	46.3	99.4	

Submittal Data Sheet

Wilco-CO MVI - NSF 61/372 Pressure Boosting System



CO2 MVI-160 300# Discharge															TEFC Motor Data (Per Motor)	
															Motor FLA (per pump)	System FLA
															Dimensions - Inches (in)	
Model	Article	HP	Voltage	Phase	System Header Size (ANSI)	Pmax (PSI)	A (in)	B (in)	C (in)	D (in)	E (in)	F (in)	H (in)	System Weight (Lbs)	(A)	
CO2 MVI-160-9/2	3353755	40	460V	~3	6" 300#	435	45	53	70	56.57	52.26	52.71	75.06	2776.18	46.3	99.4
CO2 MVI-160-9	3353756	40	460V	~3	6" 300#	435	45	53	70	56.57	52.26	52.71	75.06	2776.18	46.3	99.4
CO2 MVI-160-10/2	3353757	40	460V	~3	6" 300#	435	45	53	73	56.57	52.26	52.71	77.82	2792.56	46.3	99.4
CO2 MVI-160-10	3353758	40	460V	~3	6" 300#	435	45	53	73	56.57	52.26	52.71	77.82	2792.56	46.3	99.4
CO2 MVI-160-11/2	3353759	40	460V	~3	6" 300#	435	45	53	76	56.57	52.26	52.71	80.57	2808.94	46.3	99.4
CO2 MVI-160-6/2	3354238	25	575V	~3	6" 300#	435	42	50	67	53.57	52.51	52.51	64.24	2382.04	23	52.4
CO2 MVI-160-6	3354239	25	575V	~3	6" 300#	435	42	50	67	53.57	52.51	52.51	64.24	2382.48	23	52.4
CO2 MVI-160-7/2	3354240	30	575V	~3	6" 300#	435	42	50	67	53.57	52.51	52.51	67	2433.42	27.4	64
CO2 MVI-160-7	3354241	30	575V	~3	6" 300#	435	42	50	67	53.57	52.51	52.51	67	2433.86	27.4	64
CO2 MVI-160-8/2	3354242	30	575V	~3	6" 300#	435	42	50	67	53.57	52.51	52.51	69.75	2447.78	27.4	64
CO2 MVI-160-8	3354243	40	575V	~3	6" 300#	435	45	53	68	56.57	52.26	52.71	72.3	2769.27	37	86.8
CO2 MVI-160-9/2	3354244	40	575V	~3	6" 300#	435	45	53	70	56.57	52.26	52.71	75.06	2784.18	37	86.8
CO2 MVI-160-9	3354245	40	575V	~3	6" 300#	435	45	53	70	56.57	52.26	52.71	75.06	2784.18	37	86.8
CO2 MVI-160-10/2	3354246	40	575V	~3	6" 300#	435	45	53	73	56.57	52.26	52.71	77.82	2800.56	37	86.8
CO2 MVI-160-10	3354247	40	575V	~3	6" 300#	435	45	53	73	56.57	52.26	52.71	77.82	2800.56	37	86.8
CO2 MVI-160-11/2	3354248	40	575V	~3	6" 300#	435	45	53	76	56.57	52.26	52.71	80.57	2816.94	37	86.8