

Submittal Data Sheet

Wilco-CO MVI – NSF 61/372 Pressure Boosting System

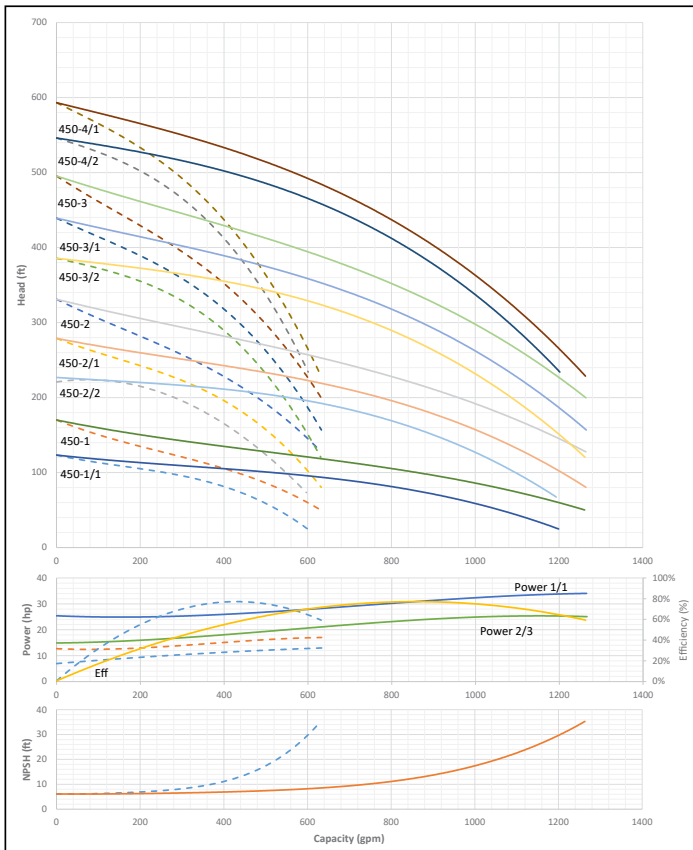


CO2 MVI-450



Project:	
Engineer:	
Contractor:	
Submitted By:	Date:
Approved By:	Date:

Tag #	Model #	Flow	BOOST PSI	Min. Inlet PSI	HP/Pump	Phase	Voltage	RPM
	CO2 MVI-450							3600



Applications

- Water Supply
- Agriculture
- Washing / Sprinkling Systems
- Pressure Boosting
- Cooling Circuits
- Condensate Return

Materials of Construction

Volute	AISI 304 Stainless Steel with Cast Iron ANSI flanges
Impeller	AISI 304 Stainless Steel
Shaft	ANSI 431 Stainless Steel
Elastomers	EPDM
Manifold	AISI 304 Stainless Steel
Suction Isolation Valves	150# Cast Iron Wafer Butterfly, All Stainless Steel Wetted Components
Discharge Isolation Valve	150# Cast Iron Wafer Butterfly, All Stainless Steel Wetted Components or 300# 304SS Ball Valve
Check Valve	Wafer Style, 316 Stainless Steel internals, non-slam, plunger type with EPDM seal/ cast iron body
Mechanical Seal	Frame and Springs 304SS
Pressure Transducers	¼" MNPT, 316 Stainless Steel
Pressure Gauges	¼" MNPT, 304 Stainless Steel Housing with 316 Stainless Steel wetted parts
System Base	Epoxy Coated A-500 Steel Tubing and A36 C-Channel/Plates

Technical Data – Operational Ranges

Liquid Temp Range	5°F to 248°F (Min. 32 °F for Domestic Water)
Ambient Temp Range	+32°F to +104 °F

Technical Data – Panel

Voltage	208-230/460-3 or 575-3
Enclosure	NEMA 3R up to 20 HP NEMA 12 for 25 HP and above (NEMA 4 and 4X available upon request)
Standard	Meets UL 508A
Variable Frequency Drives	Danfoss FC-101: • 1 HP to 3 HP 208-230V-1 IN / 208-230V-3 OUT • 1 HP to 60 HP 208-230V-3 • 1 HP to 100 HP 460V-3 • 1 HP to 100 HP 575V-3

Technical Data – PLC

User Interface	7" Diagonal Color LCD Touchscreen
Display Resolution	800 x 480 Pixels
Supply Voltage	24VDC
Max. Current Consumption	320mA@24V
Number of Analog Inputs	4
Number of Analog Outputs	4
Number of Digital Inputs	18
Number of Digital Outputs	17
Onboard Communications	Modbus Protocol (Optional Gateways for BACnet, LonWorks, and CANbus)
Ethernet Port	RJ45 port capable of transmitting data 10/100Mbps
Additional Ports	2.0 USB Port; Micro-SD Port

Motor Data

Power Supply	208-230, 460, 575-3
Motor Enclosure	Totally Enclosed Fan Cooled (TEFC)
Motor Efficiency	Nema Premium Efficiency – Meets NEMA 12-12 Rule
Enclosure Construction	Rolled Steel/ Cast Iron
Motor Protection Index	IP54
Insulation Class	F

Approval Stamp

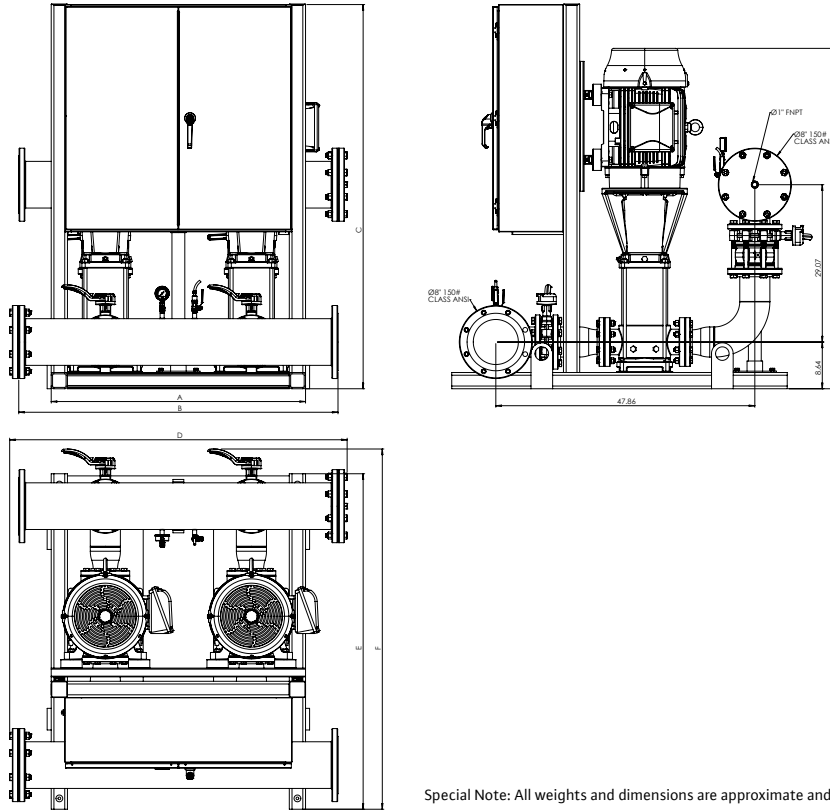
Submittal Data Sheet

Wilo-CO MVI - NSF 61/372 Pressure Boosting System



CO2 MVI-450

150# Discharge



Special Note: All weights and dimensions are approximate and should not be used as exact rough-in dimensions

CO2 MVI-450

CO2 MVI-450															TEFC Motor Data (Per Motor)	
Dimensions - Inches (in)															Motor FLA (per pump)	System FLA
Model	Article	HP	Voltage	Phase	System Header Size (ANSI)	Pmax (PSI)	A (in)	B (in)	C (in)	D (in)	E (in)	F (in)	H (in)	System Weight (Lbs)	(A)	
CO2 MVI-450-1/1	3353290	15	208V-230V	~3	8" 150#	232	44	56	61	59.37	62	66.53	50.79	2180.92	38.5-34.8	83-77.4
CO2 MVI-450-1	3353291	15	208V-230V	~3	8" 150#	232	44	56	61	59.37	62	66.53	50.79	2181	38.5-34.8	83-77.4
CO2 MVI-450-2/2	3353292	25	208V-230V	~3	8" 150#	232	44	56	71	59.37	62	66.53	56.64	2226.61	63.0-57.6	131
CO2 MVI-450-2/1	3353293	30	208V-230V	~3	8" 150#	232	44	56	89	59.37	62	66.53	56.64	2302.33	76.7-68.4	153
CO2 MVI-450-2	3353294	40	208V-230V	~3	8" 150#	232	47	59	89	62.37	62	66.53	59.19	2621.79	101-92.6	208.4
CO2 MVI-450-3/2	3353295	40	208V-230V	~3	8" 150#	232	47	59	89	62.37	62	66.53	62.78	2643.79	101-92.6	208.4
CO2 MVI-450-1/1	3353779	15	460V	~3	8" 150#	232	44	56	61	59.37	62	66.53	50.79	2010.02	17.4	37.8
CO2 MVI-450-1	3353780	15	460V	~3	8" 150#	232	44	56	61	59.37	62	66.53	50.79	2010.1	17.4	37.8
CO2 MVI-450-2/2	3353781	25	460V	~3	8" 150#	232	44	56	71	59.37	62	66.53	56.64	2299.77	28.8	59.6
CO2 MVI-450-2/1	3353782	30	460V	~3	8" 150#	232	44	56	71	59.37	62	66.53	56.64	2321.85	34.2	70.2
CO2 MVI-450-2	3353783	40	460V	~3	8" 150#	232	47	59	71	62.37	62	66.53	59.19	2896.75	46.3	99.4
CO2 MVI-450-3/2	3353784	40	460V	~3	8" 150#	232	47	59	71	62.37	62	66.53	62.78	2918.75	46.3	99.4
CO2 MVI-450-3/1	3353785	50	460V	~3	8" 150#	232	47	59	71	62.37	62	66.53	62.78	2694.67	56.1	122.2
CO2 MVI-450-3	3353786	50	460V	~3	8" 150#	232	47	59	71	62.37	62	66.53	62.78	2694.77	56.1	122.2
CO2 MVI-450-1/1	3354268	15	575V	~3	8" 150#	232	44	56	61	59.37	62	66.53	50.79	2002.64	13.8	32.4
CO2 MVI-450-1	3354269	15	575V	~3	8" 150#	232	44	56	61	59.37	62	66.53	50.79	2002.72	13.8	32.4
CO2 MVI-450-2/2	3354270	25	575V	~3	8" 150#	232	44	56	71	59.37	62	66.53	56.64	2212.61	23	52.4
CO2 MVI-450-2/1	3354271	30	575V	~3	8" 150#	232	44	56	71	59.37	62	66.53	56.64	2250.69	27.4	64
CO2 MVI-450-2	3354272	40	575V	~3	8" 150#	232	47	59	71	62.37	62	66.53	59.19	2576.15	37	86.8
CO2 MVI-450-3/2	3354273	40	575V	~3	8" 150#	232	47	59	71	62.37	62	66.53	62.78	2598.15	37	86.8
CO2 MVI-450-3/1	3354274	50	575V	~3	8" 150#	232	47	59	89	62.37	62	66.53	62.78	2712.31	44.9	105
CO2 MVI-450-3	3354275	50	575V	~3	8" 150#	232	47	59	89	62.37	62	66.53	62.78	2712.41	44.9	105

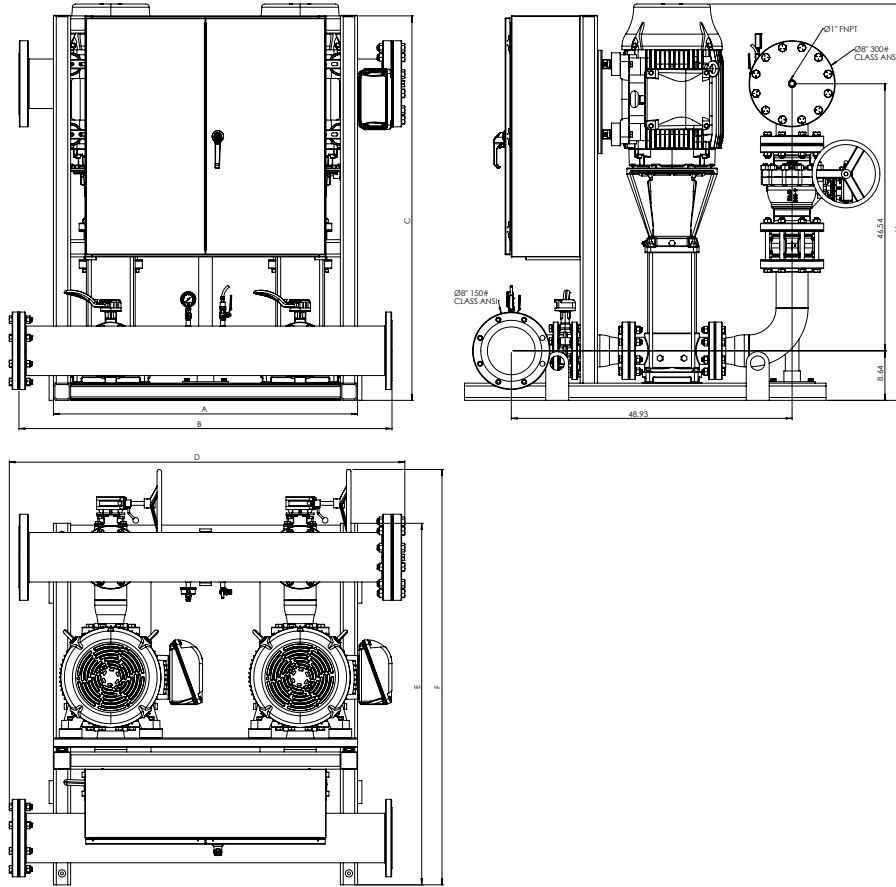
Submittal Data Sheet

Wilo-CO MVI - NSF 61/372 Pressure Boosting System



CO2 MVI-450

300# Discharge



Special Note: All weights and dimensions are approximate and should not be used as exact rough-in dimensions

CO2 MVI-450

CO2 MVI-450															TEFC Motor Data (Per Motor)	
Dimensions - Inches (In)															Motor FLA (per pump)	System FLA
Model	Article	HP	Voltage	Phase	System Header Size (ANSI)	Pmax (PSI)	A (in)	B (in)	C (in)	D (in)	E (in)	F (in)	H (in)	System Weight (Lbs)	(A)	
CO2 MVI-450-4/2	3353787	60	460V	~3	8" 300#	435	53	65	67	68.92	63	72.38	68.94	3622.22	67	146
CO2 MVI-450-4/1	3353788	60	460V	~3	8" 300#	435	53	65	67	68.92	63	72.38	68.94	3622.98	67	146
CO2 MVI-450-4/2	3354276	60	575V	~3	8" 300#	435	53	65	85	68.92	63	72.38	68.94	3669.86	53.6	127.6
CO2 MVI-450-4/1	3354277	60	575V	~3	8" 300#	435	53	65	85	68.92	63	72.38	68.94	3670.62	53.6	127.6