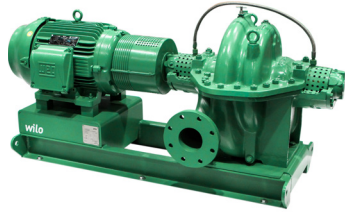


Submittal Data Sheet

Wilo SCP – Horizontal Split Case Pumps

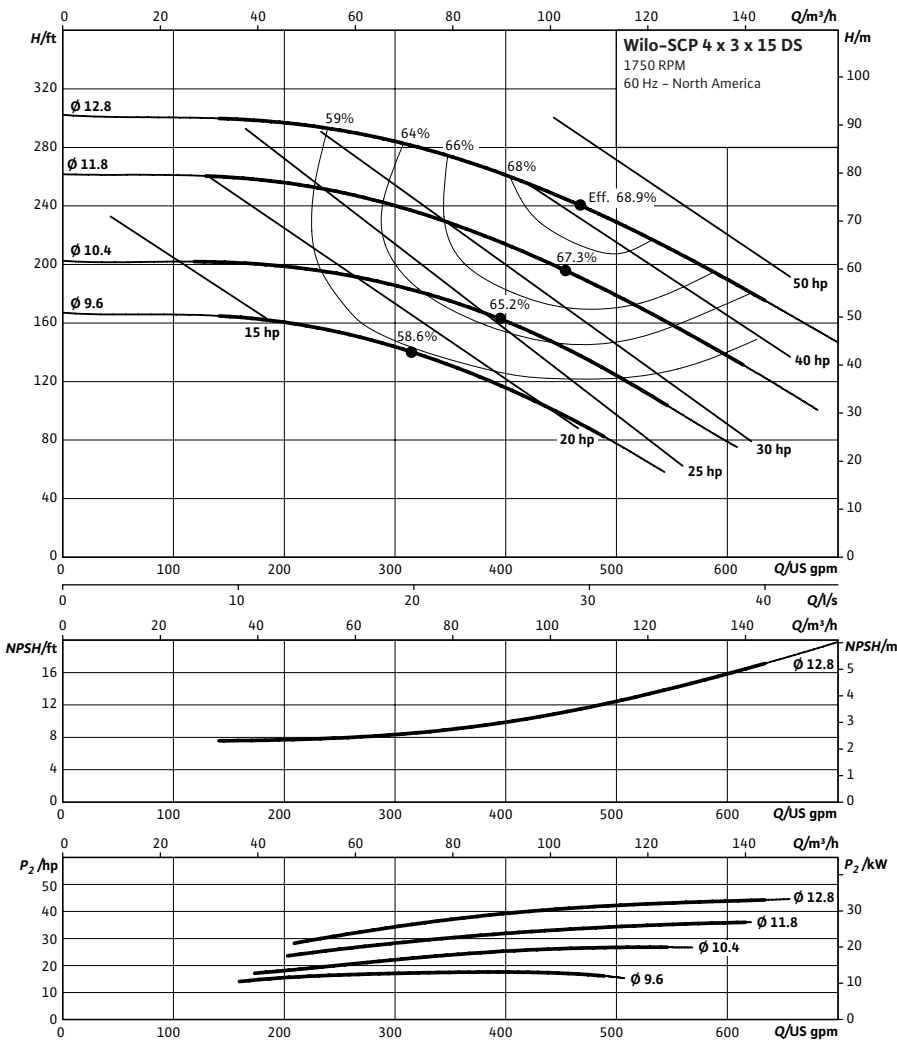


SCP 4 x 3 x 15 DS



Project:	
Engineer:	
Contractor:	
Submitted By:	Date:
Approved By:	Date:

Tag #	Model #	Flow (USGPM)	Head (Feet)	HP	Enclosure TEFC/ODP	Frame	Cycle	Phase	Voltage	RPM
	SCP 4 x 3 x 15 DS						60 Hz	3		



Technical Data

Approved Fluids

- Heating Water
- Cooling and cold water
- Water-Glycol mixtures (for 20-40% glycol and fluid temp ≤ 104°F [40°C])

Fluid Temperature

- Mechanical Seal: 18°F to 250°F (-8°C to 120°C)
- Stuffing Box Packing: 18°F to 220°F (-8°C to 105°C)

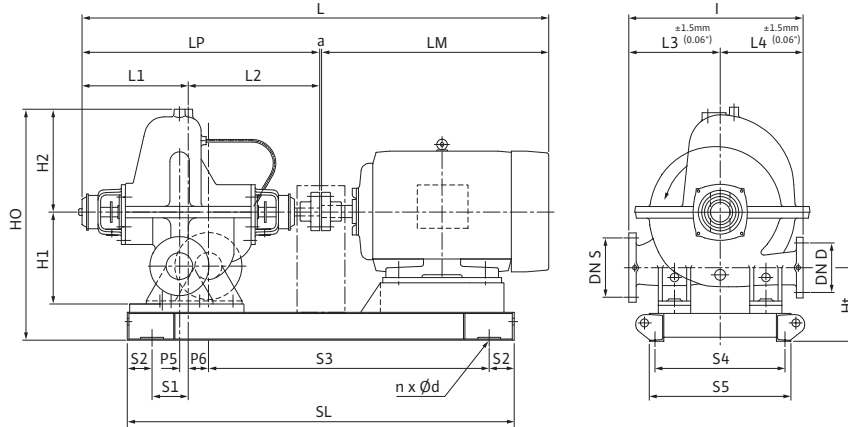
Materials of Construction

<input type="checkbox"/> Pump Housing	A48 Class 35
<input type="checkbox"/> Pump Housing (Optional)	Ni-resist BS 3468 Gr 2 / BS 2789 500.1
<input type="checkbox"/> Impeller	BS 84 C83 600
<input type="checkbox"/> Impeller (optional)	A48 Class 35 / BS 84 C83 600
<input type="checkbox"/> Stationary Wear Rings	BS 84 C93 700
<input type="checkbox"/> Pump Shaft	A276 type 410
<input type="checkbox"/> Pump Shaft (optional)	BS 970 316 S16
<input type="checkbox"/> Mechanical Seal	Carbon/silicon carbide/EPDM (E1)
<input type="checkbox"/> Other Mechanical Seals	Avail. on request
<input type="checkbox"/> Additional Spacer Coupling	Avail. on request
<input type="checkbox"/> Other:	

Approval Stamp

Dimensional Drawing

Dual Stage Pump



SCP 4 x 3 x 15 DS

Dimensions - Inches (mm)

Frame	a	L	I	L1	L2	L3	L4	LM	LP	H1	H2	HO	Ht	n	Ød	S1	S2	S3	S4	S5	SL	P5	P6
254T	.50 (13)	56.25 (1249)	22.69 (579)	16.63 (422)	18.06 (459)	13.19 (335)	9.50 (241)	21.06 (535)	34.69 (881)	13.38 (340)	9.81 (249)	28.88 (734)	10.88 (276)	4	.91 (23)	3.69 (94)	4.00 (102)	37.38 (950)	11.31 (287)	13.63 (346)	45.38 (1153)	2.06 (52)	5.44 (138)
256T	.50 (13)	58.31 (1481)	22.69 (579)	16.63 (422)	18.06 (459)	13.19 (335)	9.50 (241)	23.19 (589)	34.69 (881)	13.38 (340)	9.81 (249)	28.88 (734)	10.88 (276)	4	.91 (23)	3.69 (94)	4.00 (102)	39.13 (994)	11.31 (287)	13.63 (346)	47.13 (1197)	2.06 (52)	5.44 (138)
284T	.50 (13)	61.13 (1553)	22.69 (579)	16.63 (422)	18.06 (459)	13.19 (335)	9.50 (241)	25.94 (689)	34.69 (881)	13.38 (340)	9.81 (249)	28.88 (734)	10.88 (276)	4	.91 (23)	3.69 (94)	4.00 (102)	41.25 (1048)	12.31 (313)	14.63 (372)	49.25 (1251)	2.06 (52)	5.44 (138)
286T	.50 (13)	61.13 (1553)	22.69 (579)	16.63 (422)	18.06 (459)	13.19 (335)	9.50 (241)	25.94 (689)	34.69 (881)	13.38 (340)	9.81 (249)	28.88 (734)	10.88 (276)	4	.91 (23)	3.69 (94)	4.00 (102)	41.25 (1048)	12.31 (313)	14.63 (372)	49.25 (1251)	2.06 (52)	5.44 (138)
324T	.50 (13)	65.56 (1665)	22.69 (579)	16.63 (422)	18.06 (459)	13.19 (335)	9.50 (241)	30.38 (772)	34.69 (881)	13.38 (340)	9.81 (249)	28.88 (734)	10.88 (276)	4	.91 (23)	3.69 (94)	4.00 (102)	43.63 (1108)	14.31 (363)	16.63 (422)	51.63 (1311)	2.06 (52)	5.44 (138)
326T	.50 (13)	65.56 (1665)	22.69 (579)	16.63 (422)	18.06 (459)	13.19 (335)	9.50 (241)	30.38 (772)	34.69 (881)	13.38 (340)	9.81 (249)	28.88 (734)	10.88 (276)	4	.91 (23)	3.69 (94)	4.00 (102)	43.63 (1108)	14.31 (363)	16.63 (422)	51.63 (1311)	2.06 (52)	5.44 (138)

Flange Dimensions – Suction Side

Dimensions - Inches (mm)

DN S #125	ØD	Ød	Øk	b	n	D2
4	9.00 (229)	6.19 (157)	7.50 (191)	.94 (24)	8	.75 (19)

Flange Dimensions – Discharge Side

Dimensions - Inches (mm)

DN D 125#	ØD	Ød	Øk	b	n	D2
3	7.50 (191)	5.50 (140)	6.00 (152)	.94 (24)	4	.75 (19)

