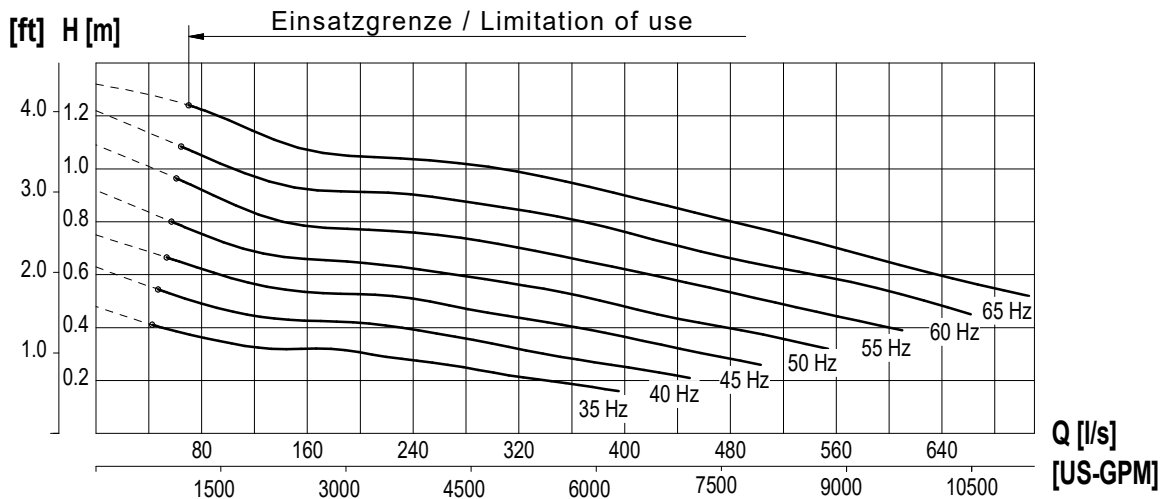
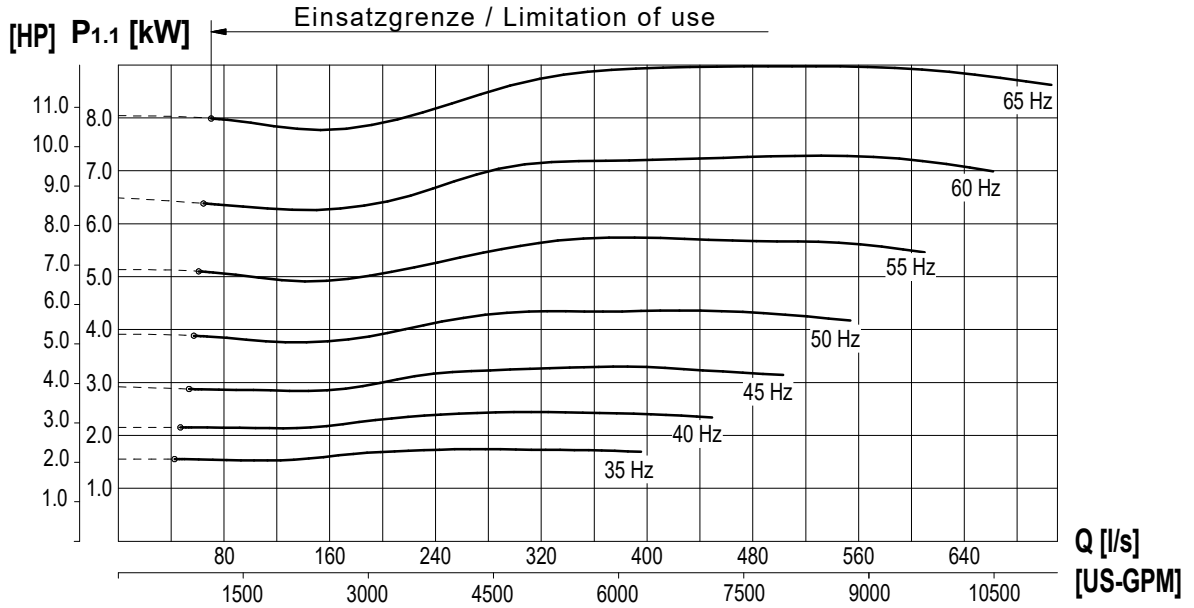




Kennlinie Performance curve	Baureihe Type	RZP 60-4.40-4/16	Nr./ No. Version	KL 0366-1 2024-03-05 Sp
Netz / Main connection	460V~3 / 60Hz		Nenn-drehzahl Nom. Speed	403 [1/min]
Motortyp / Motor type	T 17-4/16R (Ex)		Kugeldurchgang Free ball passage	150 [mm]
Nenn-Laufrad Ø / Nom. Impeller Ø	600 [mm]		Effizienzklasse / Efficiency class	DIN EN 60034-30-1
Nennleistung / Rated output [P2]	7,50 [kW]	Max.-Leistung / power input [P1]	9,40 [kW]	
			Hydr.Nr.	6088168

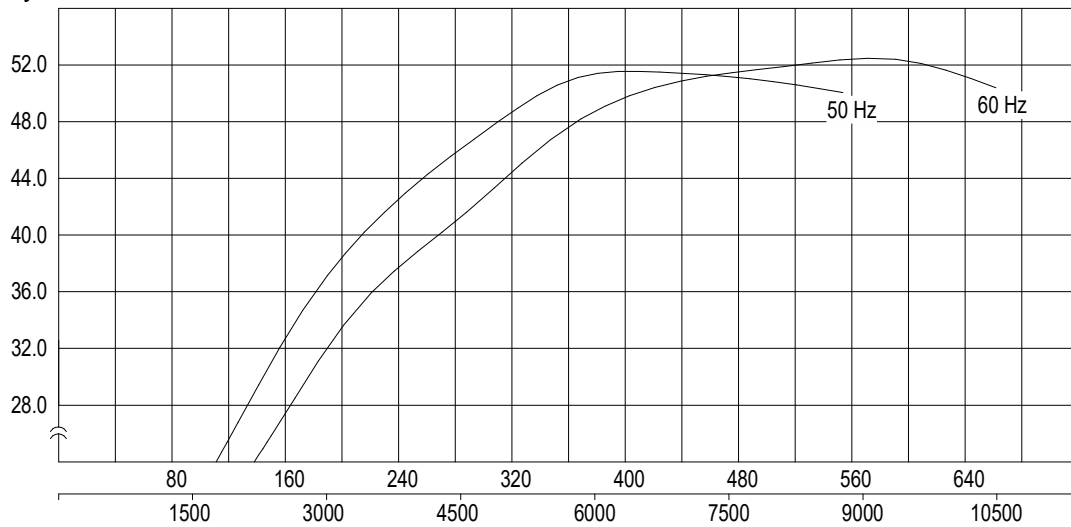


± 10% Toleranz bei linearer U/f-Frequenzregelung / ± 10% tolerance with linear U/f frequency control



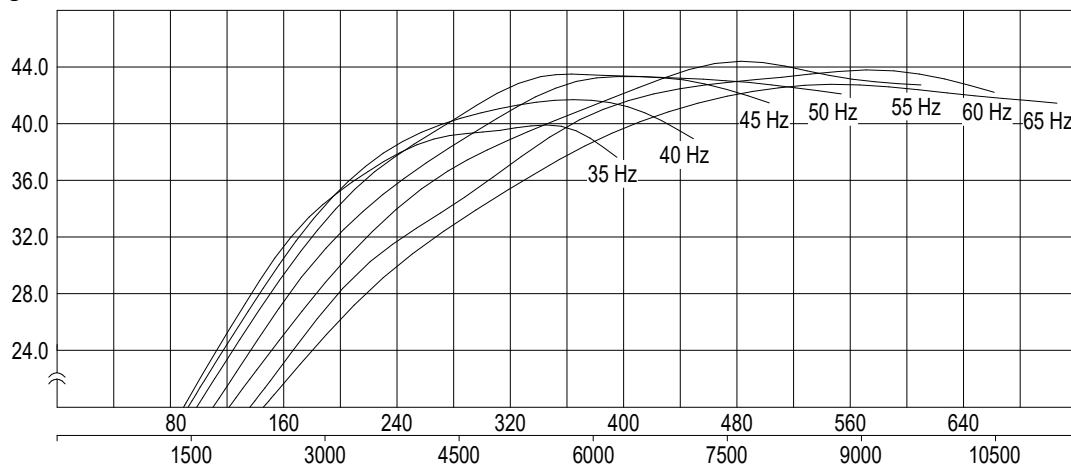
Kennlinie Performance curve	Baureihe Type	RZP 60-4.40-4/16	Nr./ No. Version	KL 0366-2 2024-03-05 Sp
Netz / Main connection	460V~3 / 60Hz		Nennzahl Nom. Speed	403 [1/min]
Motortyp / Motor type	T 17-4/16R (Ex)		Kugeldurchgang Free ball passage	150 [mm]
Nenn-Laufrad Ø / Nom. Impeller Ø	600 [mm]		Max.-Leistung / power input [P1]	9,40 [kW]
Effizienzklasse / Efficiency class	DIN EN 60034-30-1		Hydr.Nr.	6088168
Nennleistung / Rated output [P2]	7,50 [kW]			

η_{hydr} [%]



Q [l/s]
[US-GPM]

η_{ges} [%]



Q [l/s]
[US-GPM]

± 10% Toleranz bei linearer U/f-Frequenzregelung / ± 10% tolerance with linear U/f frequency control