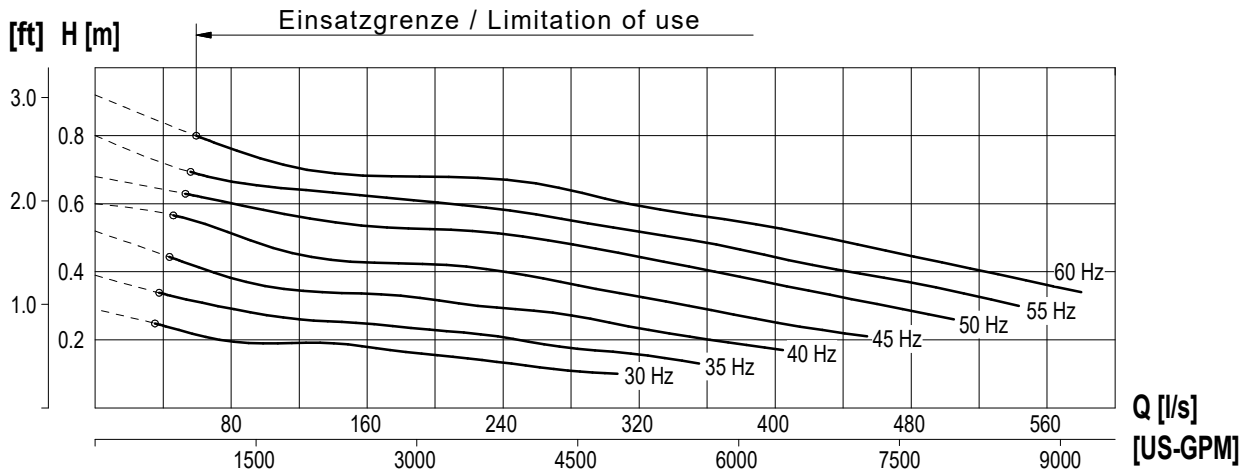
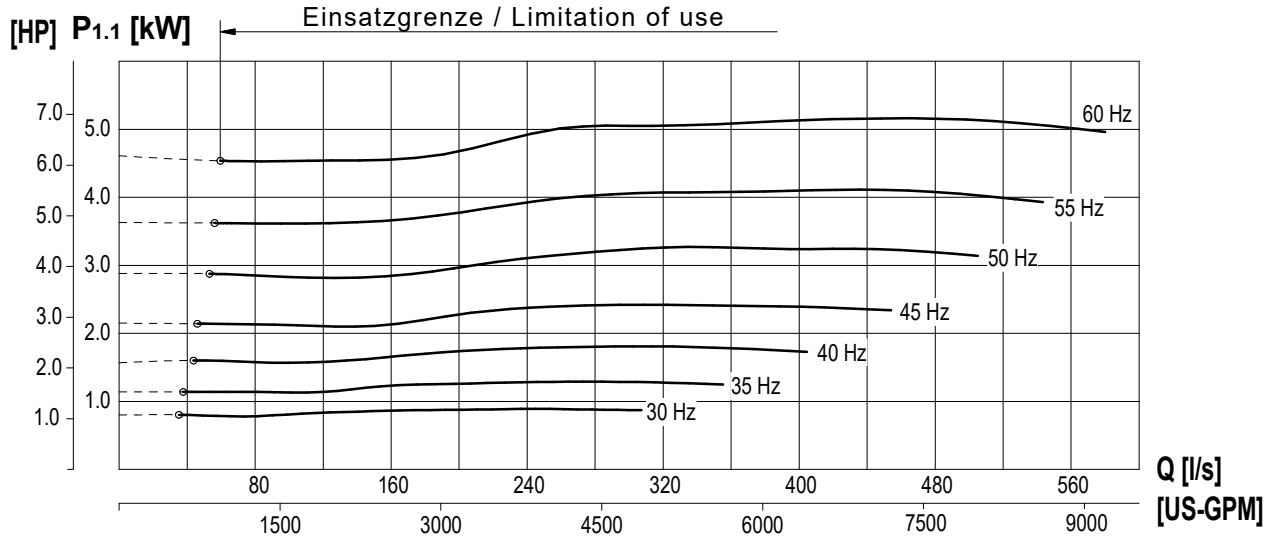


|                                  |                        |                                  |                                     |                                   |
|----------------------------------|------------------------|----------------------------------|-------------------------------------|-----------------------------------|
| Kennlinie<br>Performance curve   | Baureihe<br>Type       | <b>RZP 60-4.31-4/12</b>          | Nr./ No.<br>Version                 | <b>KL 0362-1</b><br>2024-02-28 Sp |
| Netz / Main connection           | <b>400V~3 / 50Hz</b>   |                                  | Nennzahl<br>Nom. Speed              | <b>306 [1/min]</b>                |
| Motortyp / Motor type            | <b>T 17-4/12R (Ex)</b> |                                  | Kugeldurchgang<br>Free ball passage | <b>150 [mm]</b>                   |
| Nenn-Laufrad Ø / Nom. Impeller Ø | <b>600 [mm]</b>        |                                  | Effizienzklasse / Efficiency class  | <b>DIN EN 60034-30-1</b>          |
| Nennleistung / Rated output [P2] | <b>4,50 [kW]</b>       | Max.-Leistung / power input [P1] | <b>5,80 [kW]</b>                    |                                   |
|                                  |                        |                                  | Hydr.Nr.                            | <b>6088168</b>                    |

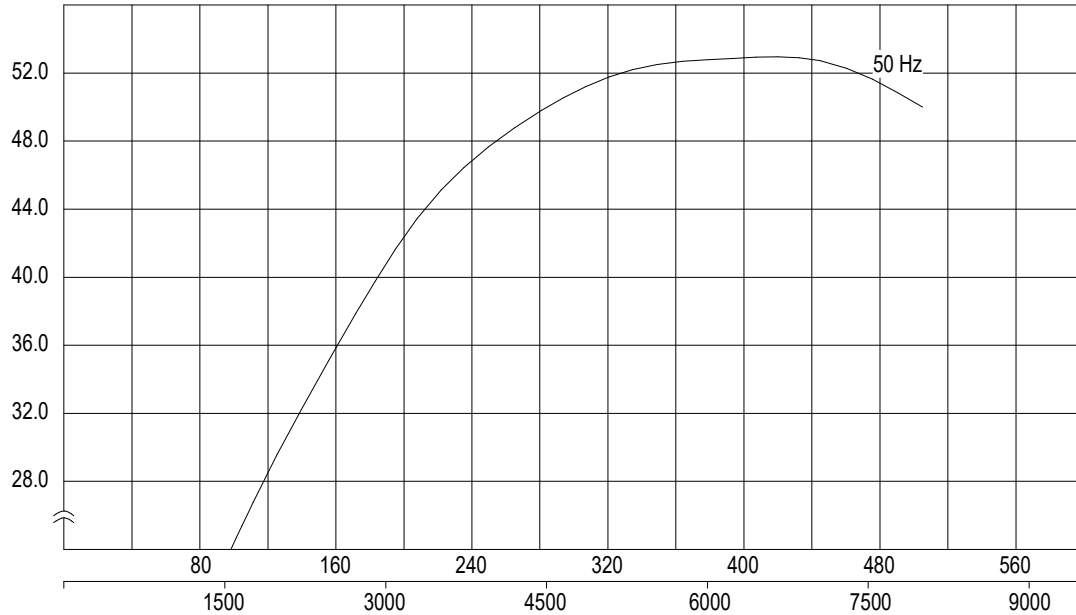


± 10% Toleranz bei linearer U/f-Frequenzregelung / ± 10% tolerance with linear U/f frequency control



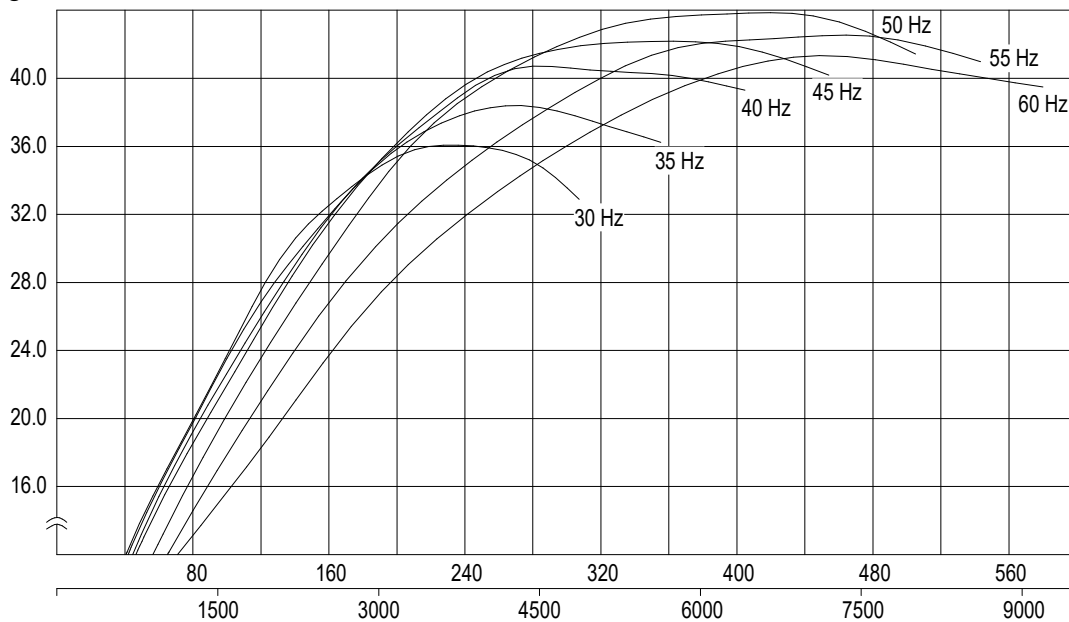
|                                    |                          |                         |                                     |                                   |
|------------------------------------|--------------------------|-------------------------|-------------------------------------|-----------------------------------|
| Kennlinie<br>Performance curve     | Baureihe<br>Type         | <b>RZP 60-4.31-4/12</b> | Nr./ No.<br>Version                 | <b>KL 0362-2</b><br>2024-02-28 Sp |
| Netz / Main connection             | <b>400V~3 / 50Hz</b>     |                         | Nennzahl<br>Nom. Speed              | <b>306 [1/min]</b>                |
| Motortyp / Motor type              | <b>T 17-4/12R (Ex)</b>   |                         | Kugeldurchgang<br>Free ball passage | <b>150 [mm]</b>                   |
| Nenn-Laufrad Ø / Nom. Impeller Ø   | <b>600 [mm]</b>          |                         | Max.-Leistung / power input [P1]    | <b>5,80 [kW]</b>                  |
| Effizienzklasse / Efficiency class | <b>DIN EN 60034-30-1</b> |                         | Hydr.Nr.                            | <b>6088168</b>                    |
| Nennleistung / Rated output [P2]   | <b>4,50 [kW]</b>         |                         |                                     |                                   |

$\eta_{hydr}$  [%]



Q [l/s]  
[US-GPM]

$\eta_{ges}$  [%]



Q [l/s]  
[US-GPM]

± 10% Toleranz bei linearer U/f-Frequenzregelung / ± 10% tolerance with linear U/f frequency control