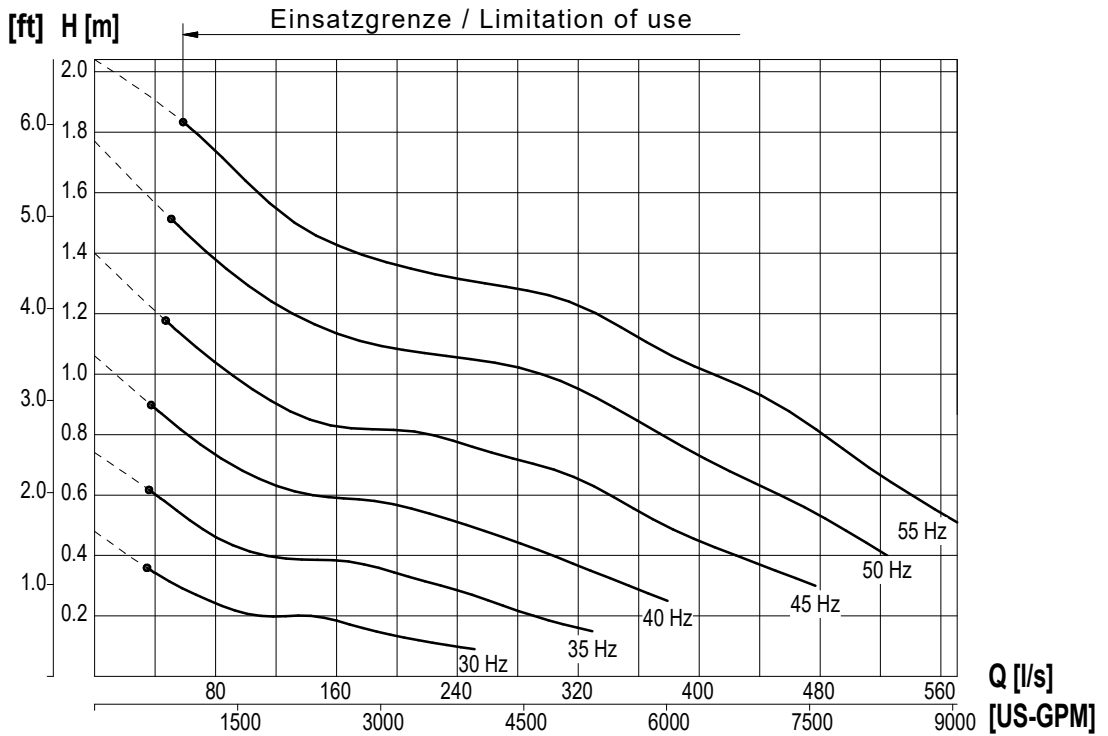
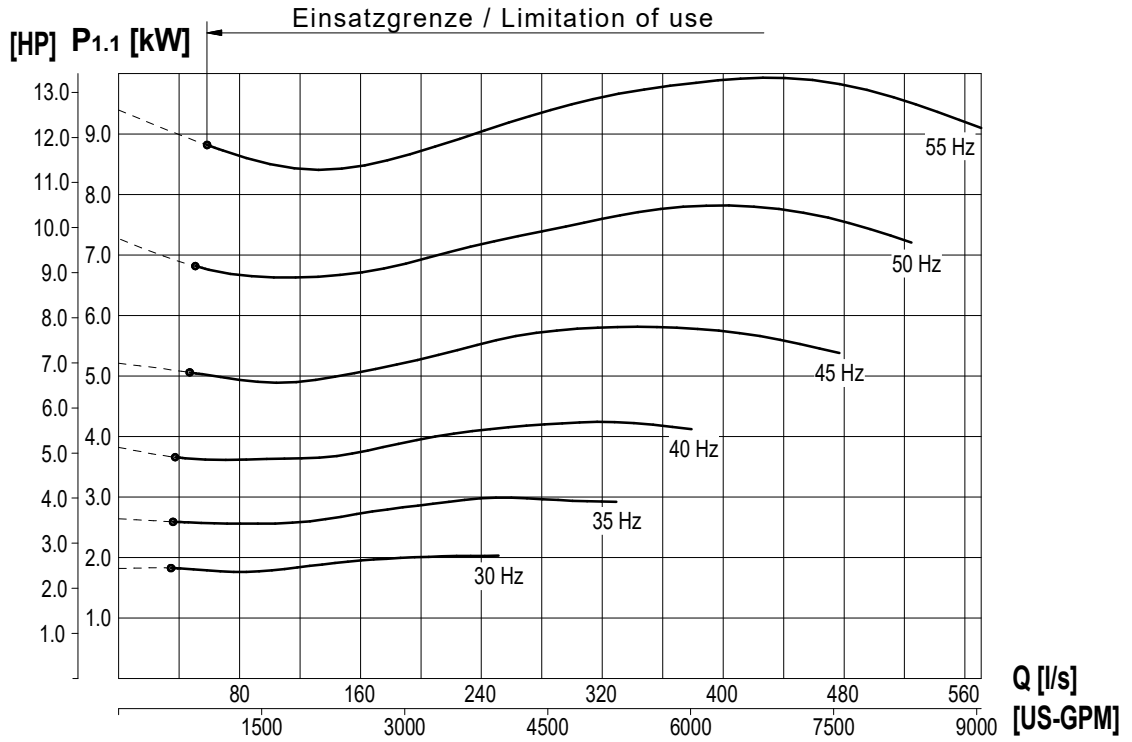
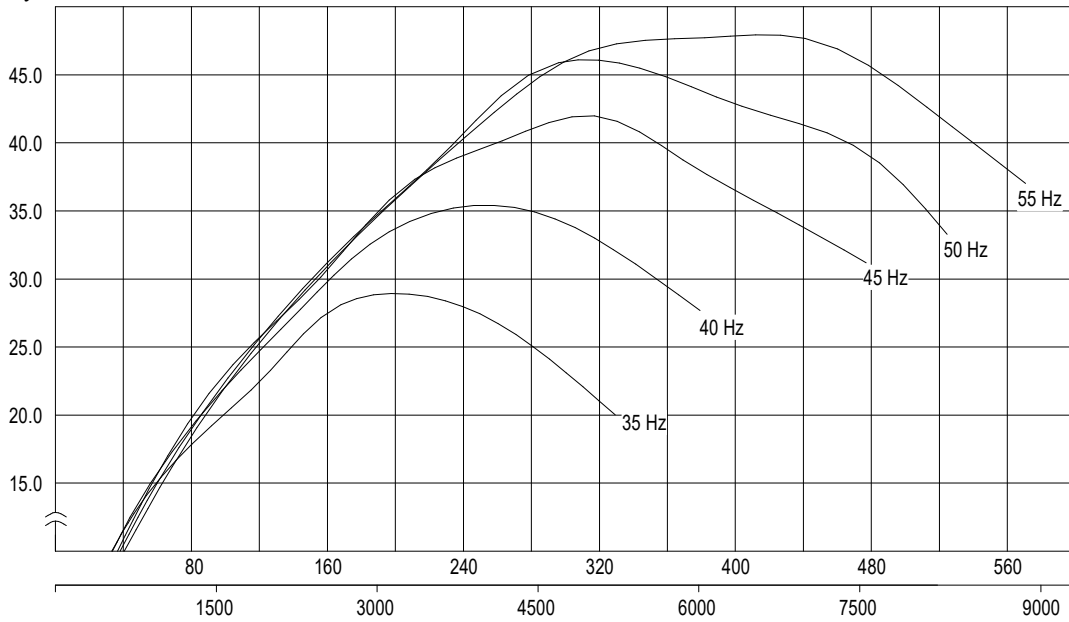


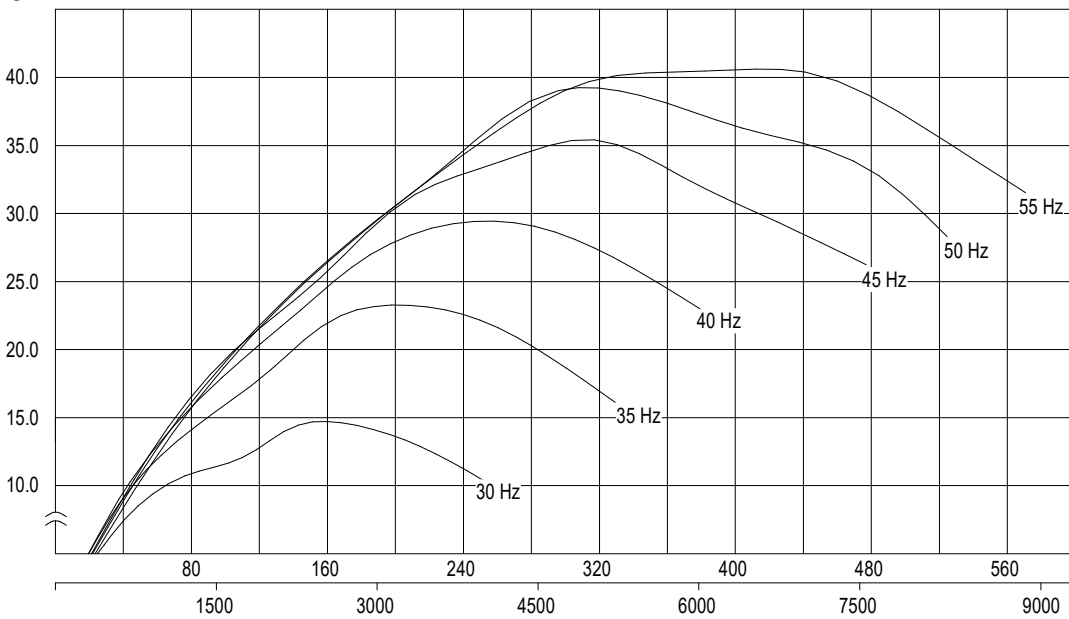
Kennlinie Performance curve	Baureihe Type	RZP 50-4.48-4/24	Nr./ No. Version	KL 0352-1 2023-09-26 Sp
Netz / Main connection	400V~3 / 50Hz		Nennzahl Nom. Speed	481 [1/min]
Motortyp / Motor type	T 17-4/24R (Ex)		Kugeldurchgang Free ball passage	150 [mm]
Nenn-Laufrad Ø / Nom. Impeller Ø	500 [mm]		Effizienzklasse / Efficiency class	DIN EN 60034-30-1
Nennleistung / Rated output [P2]	10,00 [kW]	Max.-Leistung / power input [P1]	12,20 [kW]	
		Hydr.Nr.	6089115	



± 10% Toleranz bei linearer U/f-Frequenzregelung / ± 10% tolerance with linear U/f frequency control

Kennlinie Performance curve	Baureihe Type	RZP 50-4.48-4/24	Nr./ No. Version	KL 0352-2 2023-09-26 Sp
Netz / Main connection	400V~3 / 50Hz		Nenndrehzahl Nom. Speed	481 [1/min]
Motortyp / Motor type	T 17-4/24R (Ex)		Kugeldurchgang Free ball passage	150 [mm]
Nenn-Laufrad Ø / Nom. Impeller Ø	500 [mm]		Max.-Leistung / power input [P1]	12,20 [kW]
Effizienzklasse / Efficiency class	DIN EN 60034-30-1		Hydr.Nr.	6089115
Nennleistung / Rated output [P2]	10,00 [kW]			

 $\eta_{hydr} [\%]$

 Q [l/s]
[US-GPM]

 $\eta_{ges} [\%]$

 Q [l/s]
[US-GPM]

± 10% Toleranz bei linearer U/f-Frequenzregelung / ± 10% tolerance with linear U/f frequency control