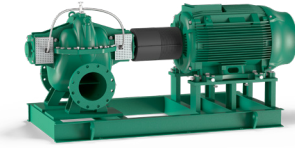


Submittal Data Sheet

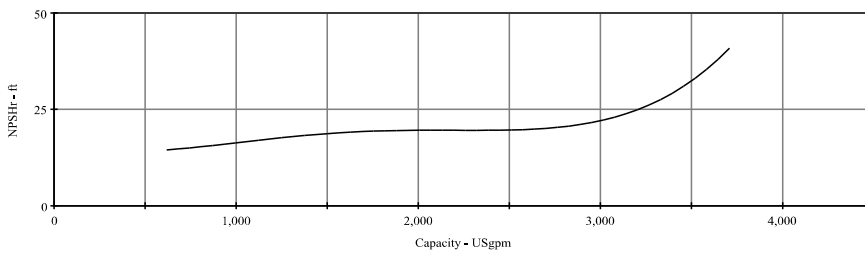
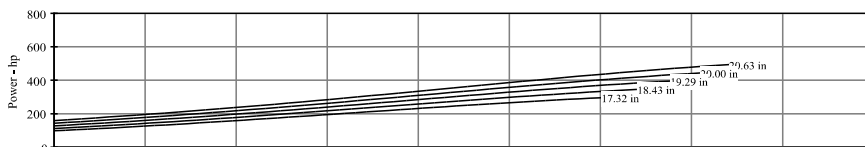
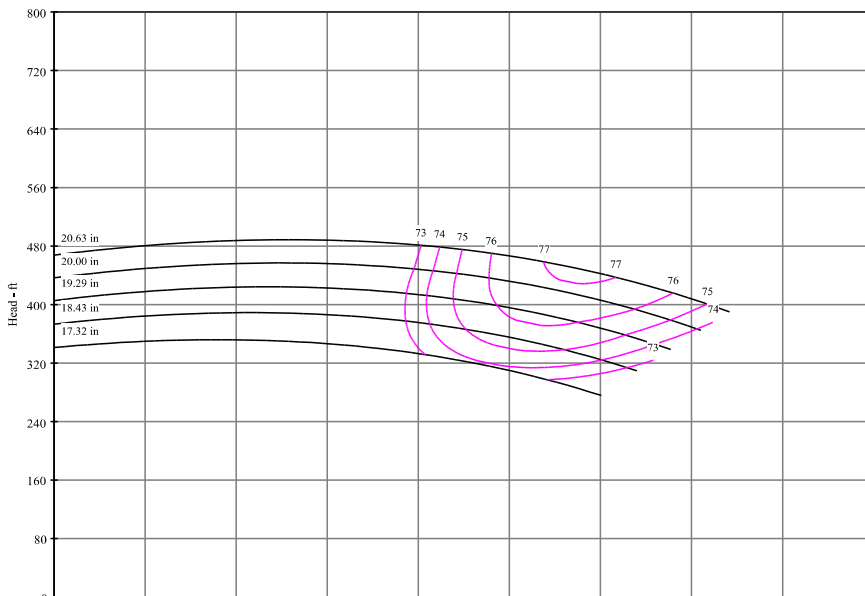
Wilo-Atmos TERA-SCH-HE - Horizontal Split Case Pumps



Atmos TERA-SCH-HE-10X6X21 SV

	Project:	
	Engineer:	
	Contractor:	
	Submitted By:	Date:
	Approved By:	Date:

Tag #	Model #	Flow (USGPM)	Head (Feet)	HP	Enclosure TEFC/ODP	Frame	Cycle	Phase	Voltage	RPM
	Atmos TERA-SCH-HE-10X6X21 SV						60 Hz	3		

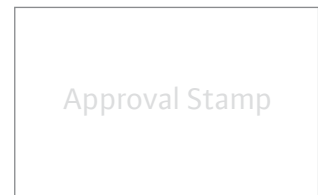


Technical Data

Approved Fluids	
Heating Water	
Cooling and cold water	
Water, Ethylene Glycol, Propylene Glycol	
Fluid Temperature	
Mechanical Seal	18°F to 248°F
Packed Seal	18°F to 212°F
Max. Pressure	
232 PSI	

Materials of Construction

Volute Wall	Single
Pump Housing	ASTM 2001 A48 CLASS-35
Impeller	ASTM A743 Gr. CF8 Stainless Steel
Stationary Wear Rings	ASTM B584 C90500
Pump Shaft	ASTM A276, GR. 410 Stainless Steel
Mechanical Seal	Carbon/silicon carbide/EPDM (E1)
Packed Seals	20% GF PPE & PS with Graphited Cotton Packing
Clockwise Rotation	
Anti-Clockwise Rotation	
Additional Spacer Coupling	Avail. on request
Other:	



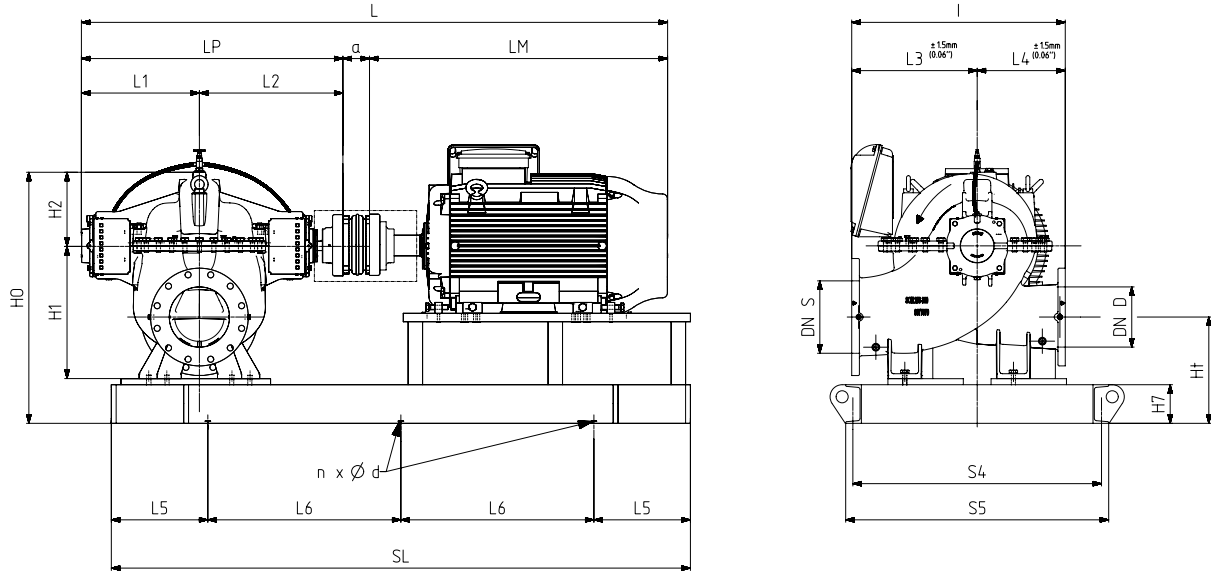
Submittal Data Sheet

Wilo-Atmos TERA-SCH-HE- Horizontal Split Case Pumps



Dimensional Drawing

Single Stage Pump



Atmos TERA-SCH-HE-10x6x21 SV

Dimensions - Inches

Frame	a	L	I	L1	L2	L3	L4	LM	LP	H1	H2	H7	HO	Ht	SL	L5	L6	n	Ød	S4	S5	DN S	DN D
447/9T	1.77	96.5	38.78	21.71	26.32	19.88	18.9	46.69	48.03	22.44	15.94	6	45.39	15.75	88.98	15.75	28.74	6	1.18	36.89	39.25	9.84	5.91
447/9T	1.77	96.5	38.78	21.71	26.32	19.88	18.9	46.69	48.03	22.44	15.94	6	45.39	15.75	88.43	15.75	33.46	6	1.18	36.89	39.25	9.84	5.91
447/9T	1.77	92.76	38.78	21.71	26.32	19.88	18.9	42.95	48.03	22.44	15.94	6	45.39	15.75	98.43	15.75	33.46	6	1.18	36.89	39.25	9.84	5.91
5010/11	1.77	112.68	38.78	21.71	26.32	19.88	18.9	62.87	48.03	22.44	15.94	6	45.39	15.75	97.24	15.75	38.19	6	1.18	42.01	44.37	9.84	5.91
5010/11	1.77	112.68	38.78	21.71	26.32	19.88	18.9	62.87	48.03	22.44	15.94	6	45.39	15.75	97.24	15.75	38.19	6	1.18	42.01	44.37	9.84	5.91
447/9T	1.77	106.14	38.78	21.71	26.32	19.88	18.9	56.34	48.03	22.44	15.94	6	45.39	15.75	88.98	15.75	28.74	6	1.18	36.89	39.25	9.84	5.91
447/9T	1.77	106.22	38.78	21.71	26.32	19.88	18.9	56.42	48.03	22.44	15.94	6	45.39	15.75	98.43	15.75	33.46	6	1.18	36.89	39.25	9.84	5.91
L447/9T	1.77	107.13	38.78	21.71	26.32	19.88	18.9	57.32	48.03	22.44	15.94	6	45.39	15.75	98.43	15.75	33.46	6	1.18	36.89	39.25	9.84	5.91
L447/9T	1.77	106.97	38.78	21.71	26.32	19.88	18.9	57.17	48.03	22.44	15.94	6	45.39	15.75	97.24	15.75	38.19	6	1.18	42.01	44.37	9.84	5.91
L447/9T	1.77	107.13	38.78	21.71	26.32	19.88	18.9	57.32	48.03	22.44	15.94	6	45.39	15.75	97.24	15.75	38.19	6	1.18	42.01	44.37	9.84	5.91

Flange Dimensions - Suction Side

Dimensions - Inches

DN S	ØD	Ød	Øk	b	n	ØD2	
10" 125#	9.84	15.94	12.6	14.25	1.14	12	1"

Flange Dimensions - Discharge Side

Dimensions - Inches

DN D	ØD	Ød	Øk	b	n	ØD2	
6" 125#	5.91	11.02	8.39	9.49	0.94	8	7/8"

