

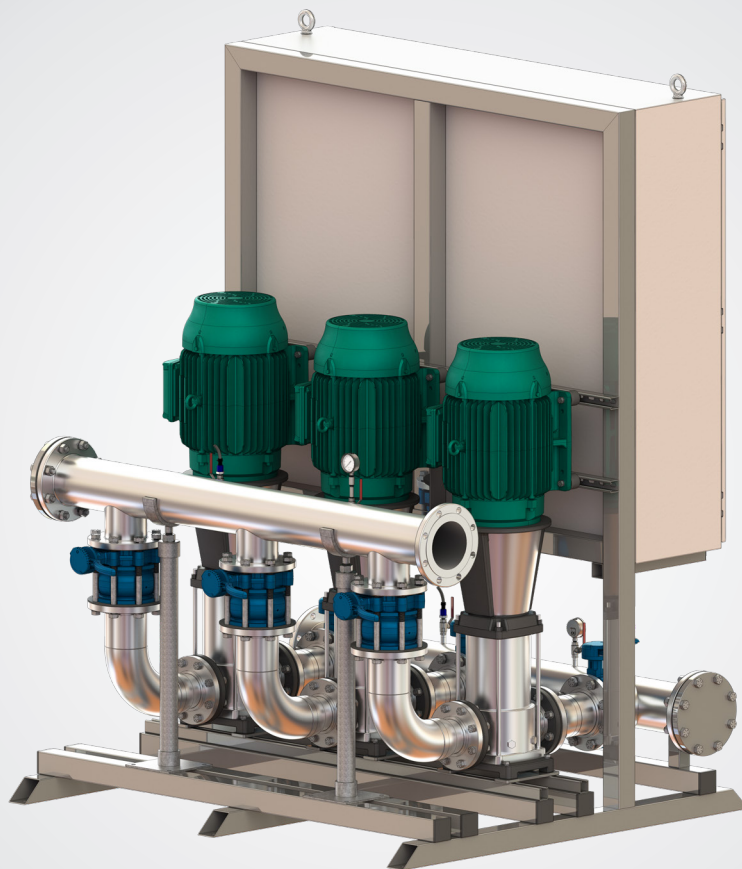
Pioneering for You



*Product Brochure - 60 Hz*

## Wilo-CO MVI

Taking Pressure Boosting to New Heights



Drinking Water System Component  
NSF/ANSI 61  
ALSO CERTIFIED TO NSF/ANSI 372  
MH60113

# Pressure Boosting System

Wilo-CO MVI



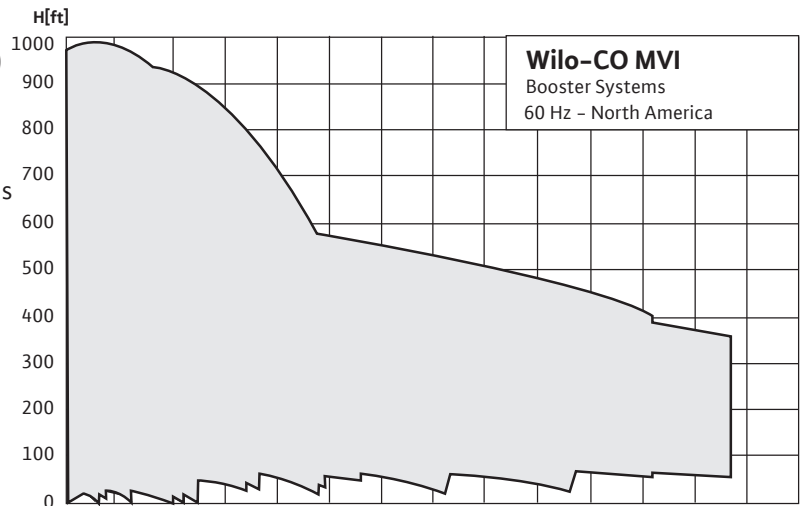
## Applications

- Water Supply
- Pressure Boosting
- Agriculture
- Washing / Sprinkling Systems
- Cooling Circuits
- Condensate Return

**Max Head:** 989 feet  
**Max. Flow:** 3,160 GPM

## Features & Benefits

- 1/3 HP-100 HP per pump (up to four pumps in parallel)
- Strong base support with close-fitting profile to maneuver through doorways
- Smaller footprint allows for installations into tight areas
- NSF/ANSI 61 & 372 certified systems 304 stainless steel construction
- Full system kWh energy reporting
- Real-time diagnostics and remote monitoring
- Onboard ModBUS and optional BACnet & LonWorks interface
- Variable speed control per pump
- Adjustable low-pressure cut-out
- Balanced run time across all pumps



## Technical Data

- Fluid Temp Range -4°F to 248°F (-20°C to 120°C with a minimum of 32°F for domestic water)
- Electrical Connections: 3~208-230/460/575V
- Rated Pressure: 232/363 PSI
- Flange Connections: 150 or 300 Class flanges depending on booster working pressure.
- TEFC motors standard

## Materials of Construction

- All 304 Stainless Steel Construction
- NSF/ANSI 61 Certified Systems
- EPDM/FKM Elastomers
- Mechanical Seal Options: Tungsten Carbide/EPDM, or optional Viton®/FKM

