

Submittal Data Sheet

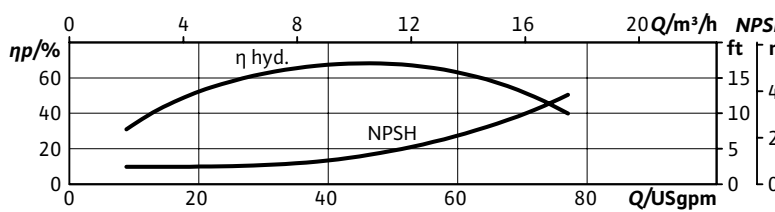
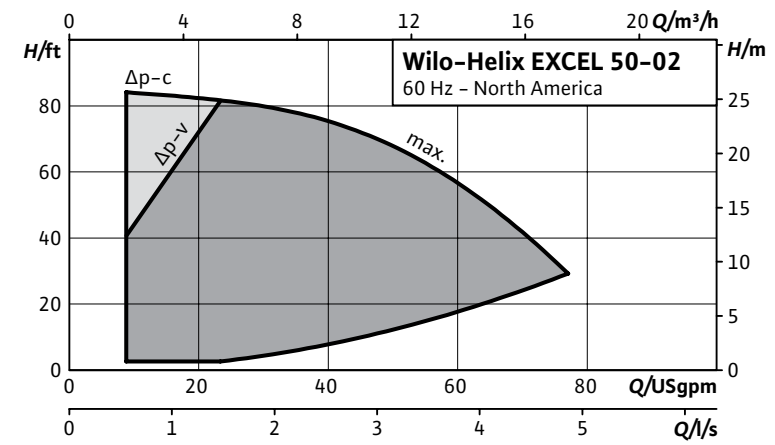
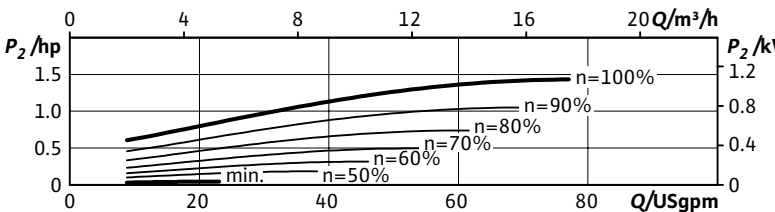
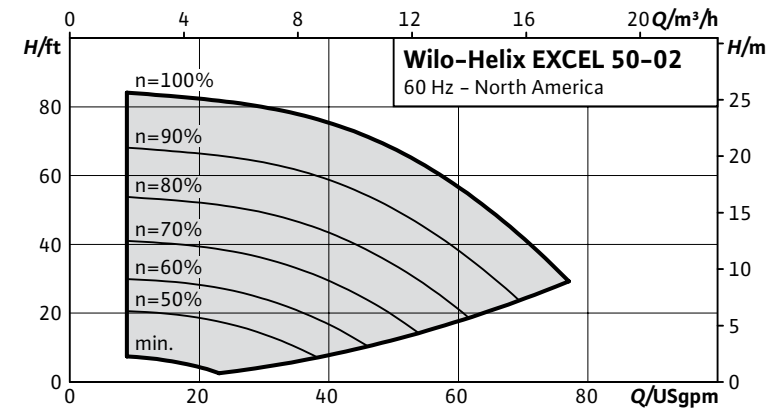
Multistage Pumps

Wilo-Helix EXCEL



Project:			
Engineer:			
Contractor:			
Submitted By:			Date:
Approved By:			Date:

Tag #	Model #	Flow	Head	Volute	Control Mode	HP	Phase	Voltage
	Helix EXCEL 50-02					1.5	3	460



Product Info	
Brand	Wilo
Product Description	Helix Excel

Technical Data	
PEI	0.84
Liquid Temp Range	-22°F to 284°F (-30°C to +120°C)
Fluid Compatibility	Water, up to 50/50 Water-Glycol
Max Operating Pressure	232.1/362.6 PSI
Mains Voltage	460V (±10%) 60Hz
Protection Class	IP 55, Class F Insulation
Ambient Temp Range	5°F to 104°F (-15°C to 40°C)
Ambient Humidity	< 90% without condensation

Materials of Construction		
Pump Volute	AISI 304L*	AISI 316L
Mechanical Seal	EPDM	FKM
Impellers Stage Housings Diffusers	AISI 304L	AISI 316L
Shaft	AISI 304L / AISI 318 LN	AISI 316L / AISI 318LN
O-ring for mechanical seal	EPDM (FKM gasket on request)	EPDM (FKM gasket on request)
Sleeve under the mechanical seal	AISI 316L	AISI 316L

*304 pump volutes are NSF 61 certified

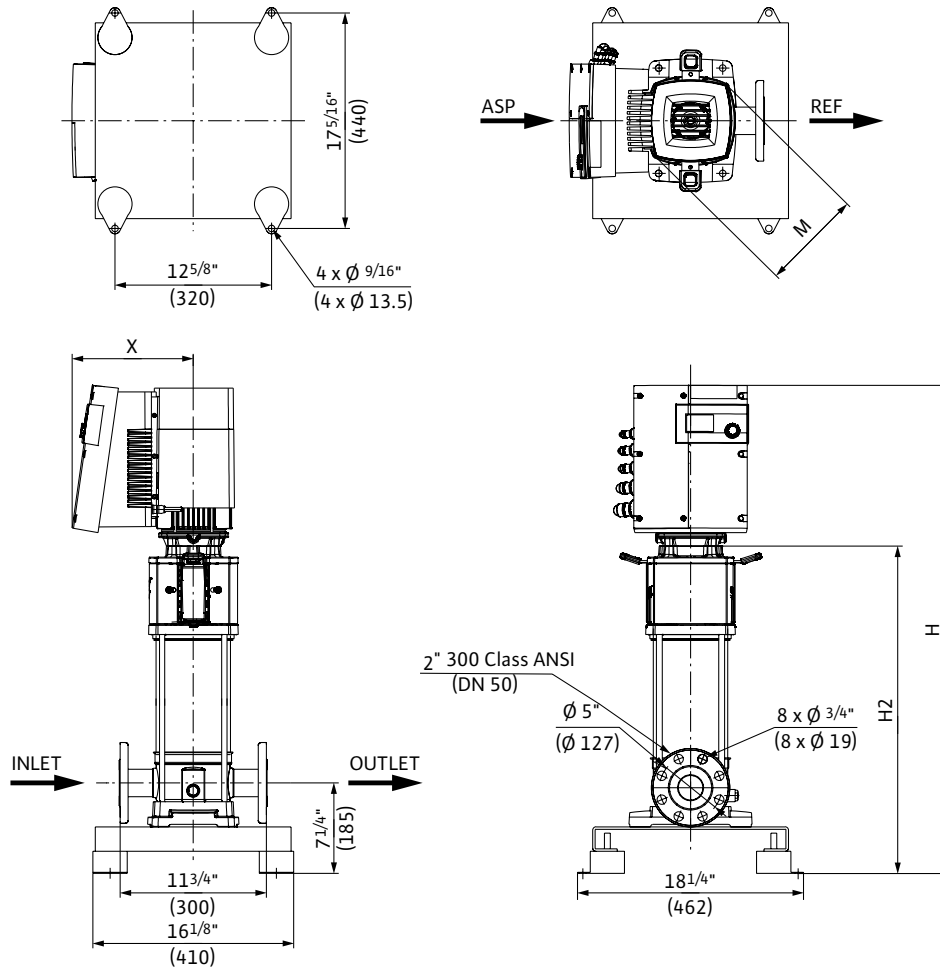
IR Module Selection	
Select	Module
	BACnet / Dual Pump
	LONworks / Dual Pump
	MODBus
	None

Applications	
Water Supply	Pressure Boosting
Boiler Feed	Cooling Systems
Pressure Washing	Irrigation

Submittal Data Sheet

Multistage Pumps

Wilo-Helix EXCEL

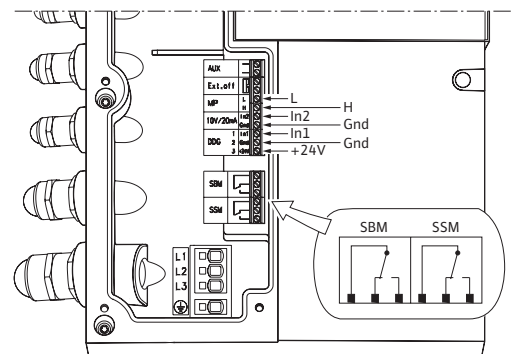


Dimensions and Weights

Model	Dimensions - Inches (mm)				Weight lbs (kg)
	H	H2	ϕM	X	
Helix EXCEL 50-02	$33\frac{1}{16}$	$20\frac{3}{16}$	$8\frac{1}{8}$	$9\frac{3}{4}$	110.2
	(840)	(512)	(206)	(248)	(50)

EC Motor Data (Single Motor Operation)

Model	P_2 Rated	Phase	Voltage	FLA	Efficiency
	hp	[~]	[V]	[A]	η_m 100%
Helix EXCEL 50-02	1.5	3	460 ($\pm 10\%$)	1.76	92.0



Submittal Data Sheet

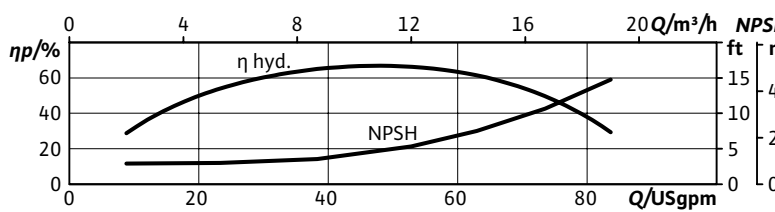
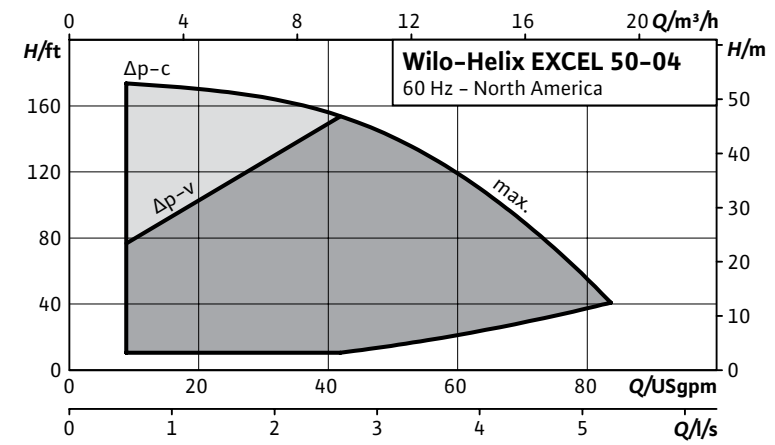
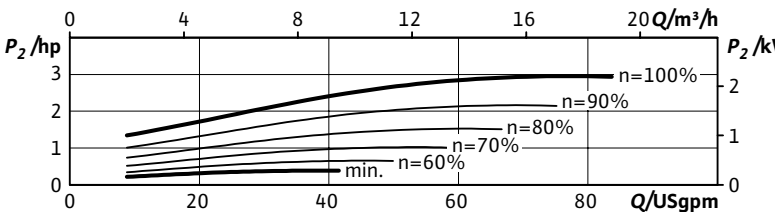
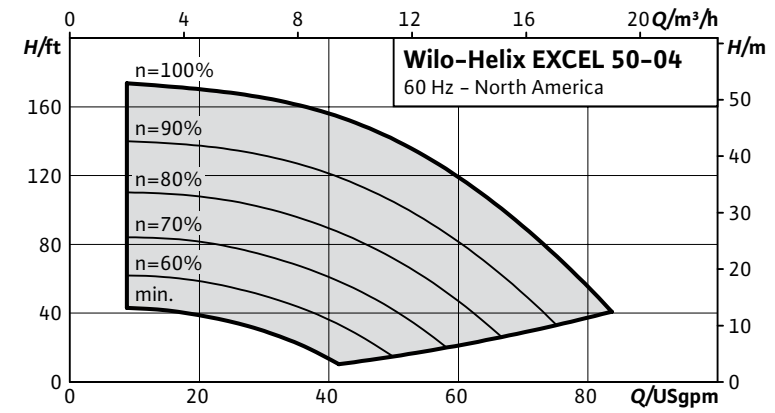
Multistage Pumps

Wilo-Helix EXCEL



Project:			
Engineer:			
Contractor:			
Submitted By:			Date:
Approved By:			Date:

Tag #	Model #	Flow	Head	Volute	Control Mode	HP	Phase	Voltage
	Helix EXCEL 50-04					3	3	460



Product Info

Brand	Wilo
Product Description	Helix Excel

Technical Data

PEI	0.61
Liquid Temp Range	-22°F to 284°F (-30°C to +120°C)
Fluid Compatibility	Water, up to 50/50 Water-Glycol
Max Operating Pressure	232.1/362.6 PSI
Mains Voltage	460V (±10%) 60Hz
Protection Class	IP 55, Class F Insulation
Ambient Temp Range	5°F to 104°F (-15°C to 40°C)
Ambient Humidity	< 90% without condensation

Materials of Construction

Pump Volute	AISI 304L*	AISI 316L
Mechanical Seal	EPDM	FKM
Impellers Stage Housings Diffusers	AISI 304L	AISI 316L
Shaft	AISI 304L / AISI 318 LN	AISI 316L / AISI 318LN
O-ring for mechanical seal	EPDM (FKM gasket on request)	EPDM (FKM gasket on request)
Sleeve under the mechanical seal	AISI 316L	AISI 316L

*304 pump volutes are NSF 61 certified

IR Module Selection

Select	Module
	BACnet / Dual Pump
	LONworks / Dual Pump
	MODBus
	None

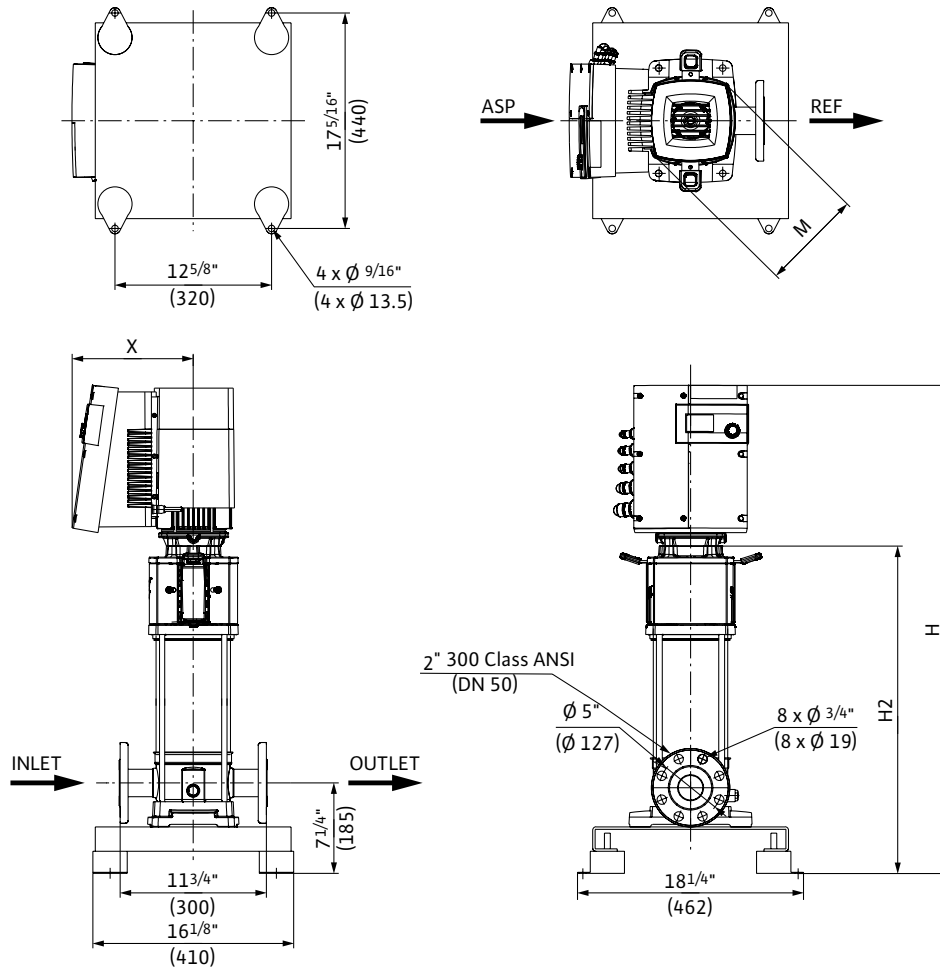
Applications

Water Supply	Pressure Boosting
Boiler Feed	Cooling Systems
Pressure Washing	Irrigation

Submittal Data Sheet

Multistage Pumps

Wilo-Helix EXCEL

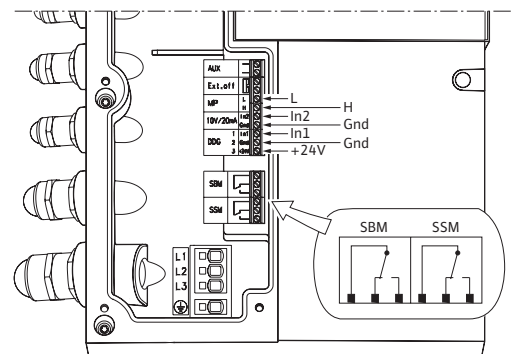


Dimensions and Weights

Model	Dimensions - Inches (mm)				Weight lbs (kg)
	H	H2	ϕM	X	
Helix EXCEL 50-04	$36\frac{7}{16}$	$23\frac{1}{2}$	$8\frac{3}{8}$	$9\frac{3}{4}$	119.0
	(925)	(597)	(206)	(248)	(54)

EC Motor Data (Single Motor Operation)

Model	P_2 Rated	Phase	Voltage	FLA	Efficiency
	hp	[~]	[V]	[A]	η_m 100%
Helix EXCEL 50-04	3.0	3	460 ($\pm 10\%$)	4.4	93.0



Submittal Data Sheet

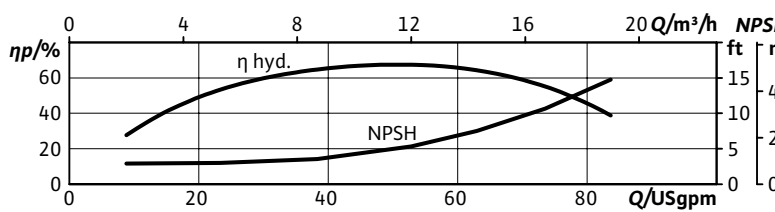
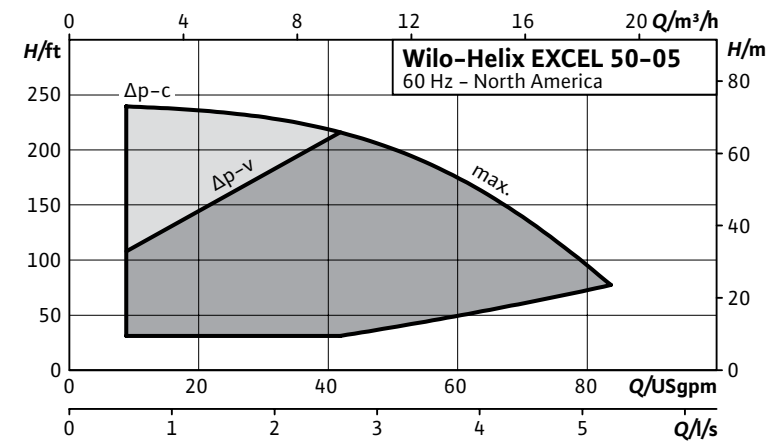
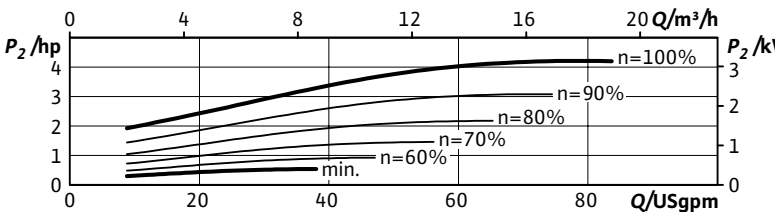
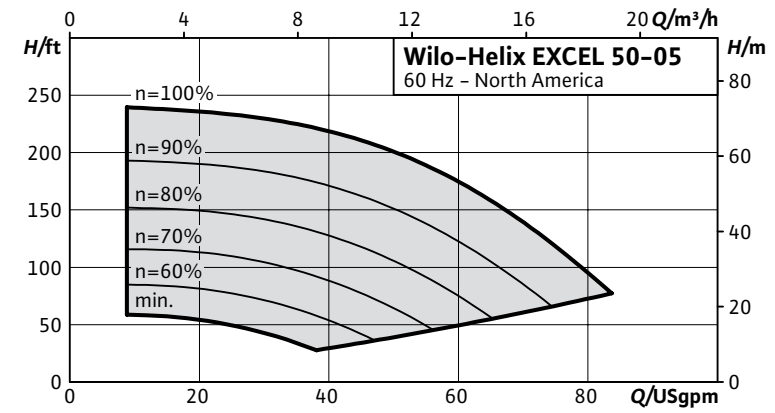
Multistage Pumps

Wilo-Helix EXCEL



Project:			
Engineer:			
Contractor:			
Submitted By:			Date:
Approved By:			Date:

Tag #	Model #	Flow	Head	Volute	Control Mode	HP	Phase	Voltage
	Helix EXCEL 50-05					4.3	3	460



Product Info	
Brand	Wilo
Product Description	Helix Excel

Technical Data	
PEI	0.54
Liquid Temp Range	-22°F to 284°F (-30°C to +120°C)
Fluid Compatibility	Water, up to 50/50 Water-Glycol
Max Operating Pressure	232.1/362.6 PSI
Mains Voltage	460V (±10%) 60Hz
Protection Class	IP 55, Class F Insulation
Ambient Temp Range	5°F to 104°F (-15°C to 40°C)
Ambient Humidity	< 90% without condensation

Materials of Construction		
Pump Volute	AISI 304L*	AISI 316L
Mechanical Seal	EPDM	FKM
Impellers Stage Housings Diffusers	AISI 304L	AISI 316L
Shaft	AISI 304L / AISI 318 LN	AISI 316L / AISI 318LN
O-ring for mechanical seal	EPDM (FKM gasket on request)	EPDM (FKM gasket on request)
Sleeve under the mechanical seal	AISI 316L	AISI 316L

*304 pump volutes are NSF 61 certified

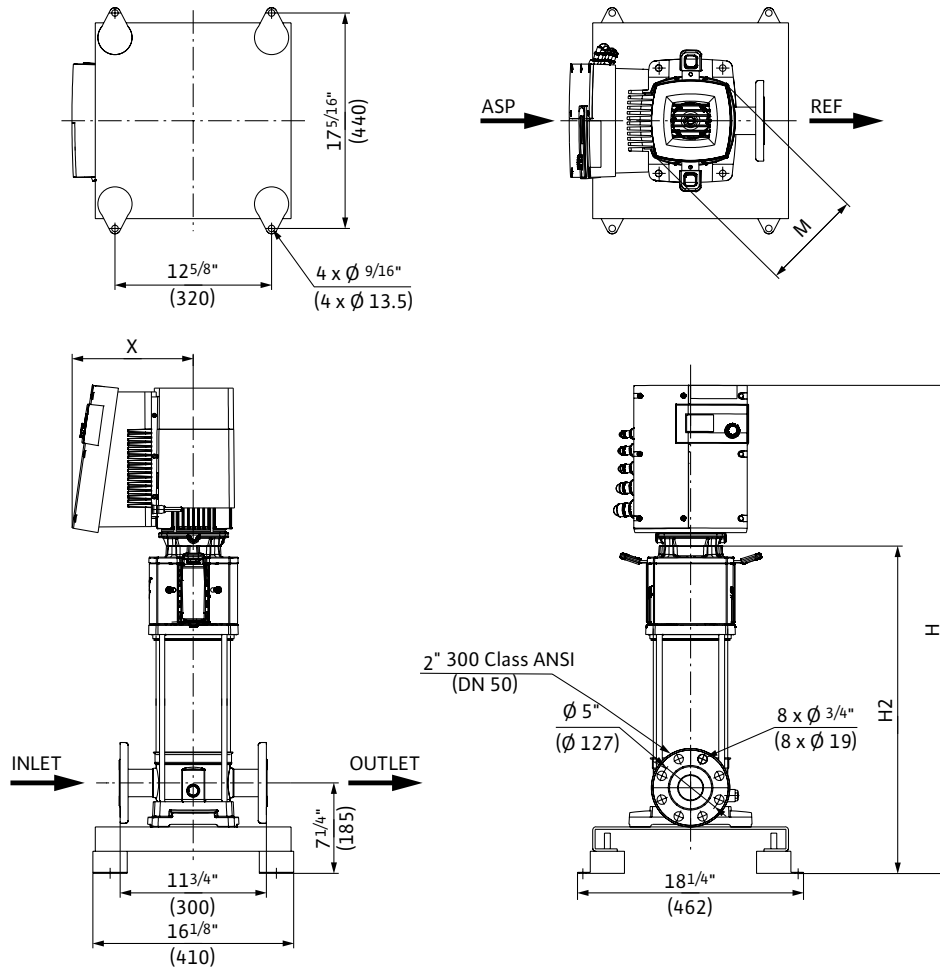
IR Module Selection	
Select	Module
	BACnet / Dual Pump
	LONworks / Dual Pump
	MODBus
	None

Applications	
Water Supply	Pressure Boosting
Boiler Feed	Cooling Systems
Pressure Washing	Irrigation

Submittal Data Sheet

Multistage Pumps

Wilo-Helix EXCEL

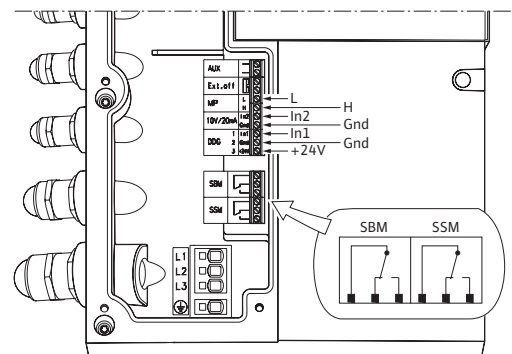


Dimensions and Weights

Model	Dimensions - Inches (mm)				Weight lbs (kg)
	H	H2	ϕM	X	
Helix EXCEL 50-05	$37\frac{15}{16}$	25	$8\frac{3}{8}$	$9\frac{3}{4}$	121.3
	(963)	(635)	(206)	(248)	(55)

EC Motor Data (Single Motor Operation)

Model	P_2 Rated	Phase	Voltage	FLA	Efficiency
	hp	[~]	[V]	[A]	η_m 100%
Helix EXCEL 50-05	4.3	3	460 ($\pm 10\%$)	6	93.0



Submittal Data Sheet

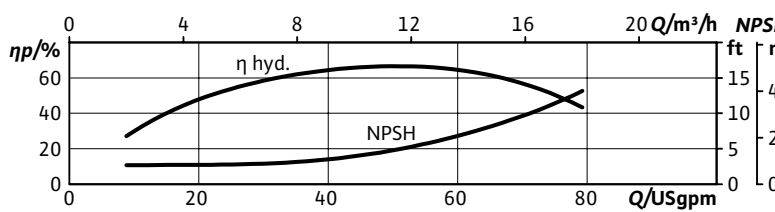
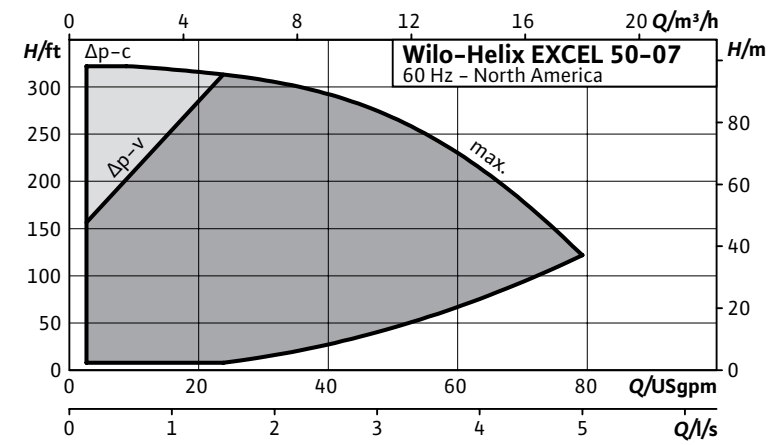
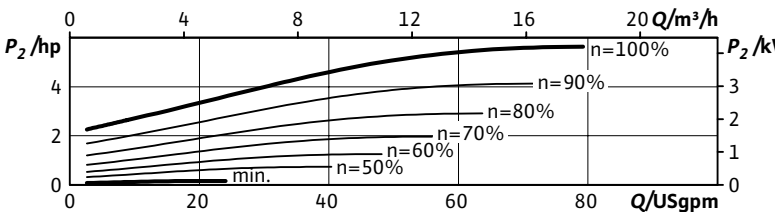
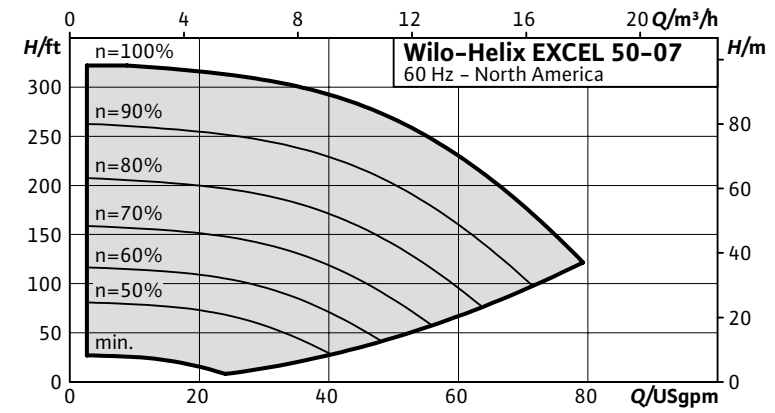
Multistage Pumps

Wilo-Helix EXCEL



Project:	
Engineer:	
Contractor:	
Submitted By:	Date:
Approved By:	Date:

Tag #	Model #	Flow	Head	Volute	Control Mode	HP	Phase	Voltage
	Helix EXCEL 50-07					5.7	3	460



Product Info	
Brand	Wilo
Product Description	Helix Excel

Technical Data	
PEI	0.48
Liquid Temp Range	-22°F to 284°F (-30°C to +120°C)
Fluid Compatibility	Water, up to 50/50 Water-Glycol
Max Operating Pressure	232.1/362.6 PSI
Mains Voltage	460V (±10%) 60Hz
Protection Class	IP 55, Class F Insulation
Ambient Temp Range	5°F to 104°F (-15°C to 40°C)
Ambient Humidity	< 90% without condensation

Materials of Construction		
Pump Volute	AISI 304L*	AISI 316L
Mechanical Seal	EPDM	FKM
Impellers Stage Housings Diffusers	AISI 304L	AISI 316L
Shaft	AISI 304L / AISI 318 LN	AISI 316L / AISI 318LN
O-ring for mechanical seal	EPDM (FKM gasket on request)	EPDM (FKM gasket on request)
Sleeve under the mechanical seal	AISI 316L	AISI 316L

*304 pump volutes are NSF 61 certified

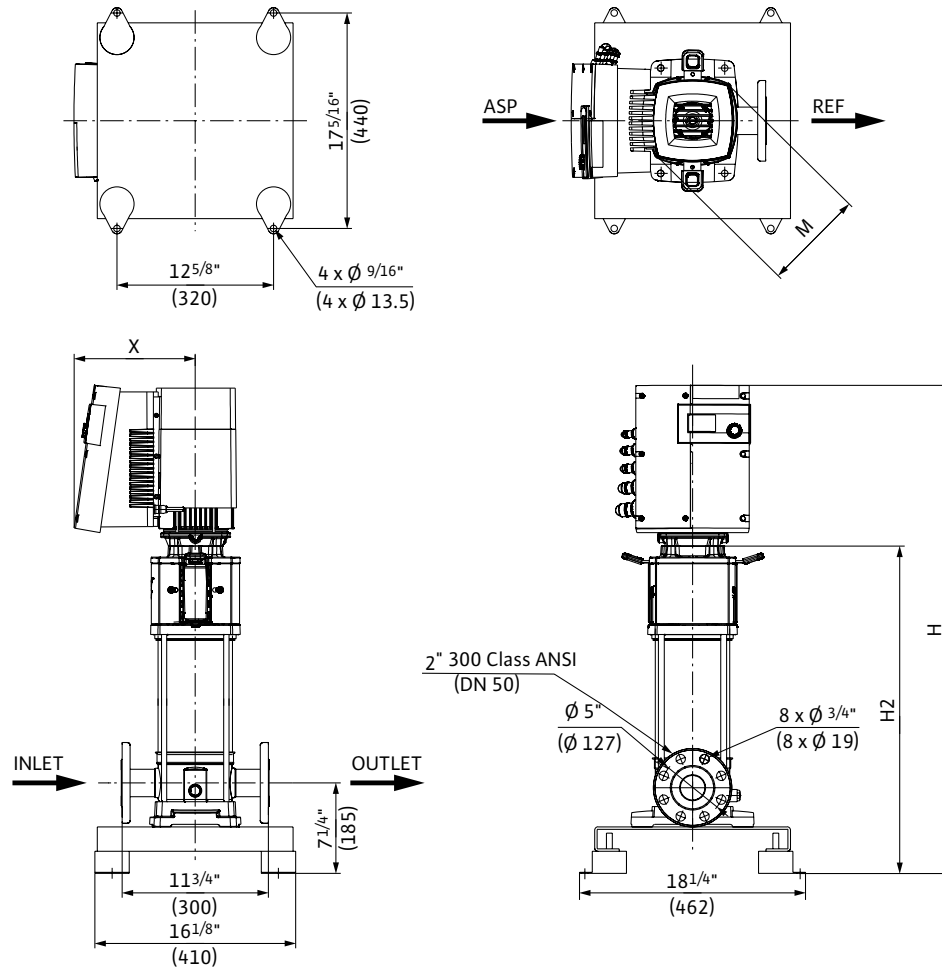
IR Module Selection	
Select	Module
	BACnet / Dual Pump
	LONworks / Dual Pump
	MODBus
	None

Applications	
Water Supply	Pressure Boosting
Boiler Feed	Cooling Systems
Pressure Washing	Irrigation

Submittal Data Sheet

Multistage Pumps

Wilo-Helix EXCEL

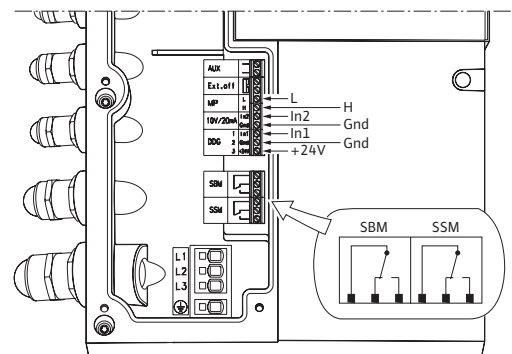


Dimensions and Weights

Model	Dimensions - Inches (mm)				Weight lbs (kg)
	H	H2	ϕ M	X	
Helix EXCEL 50-07	$49\frac{3}{16}$	$33\frac{1}{16}$	$8\frac{3}{4}$	$10\frac{9}{16}$	154.3
	(1250)	(840)	(223)	(268)	(70)

EC Motor Data (Single Motor Operation)

Model	P_2 Rated	Phase	Voltage	FLA	Efficiency
	hp	[~]	[V]	[A]	η_m 100%
Helix EXCEL 50-07	5.7	3	460 ($\pm 10\%$)	6.5	95.8



Submittal Data Sheet

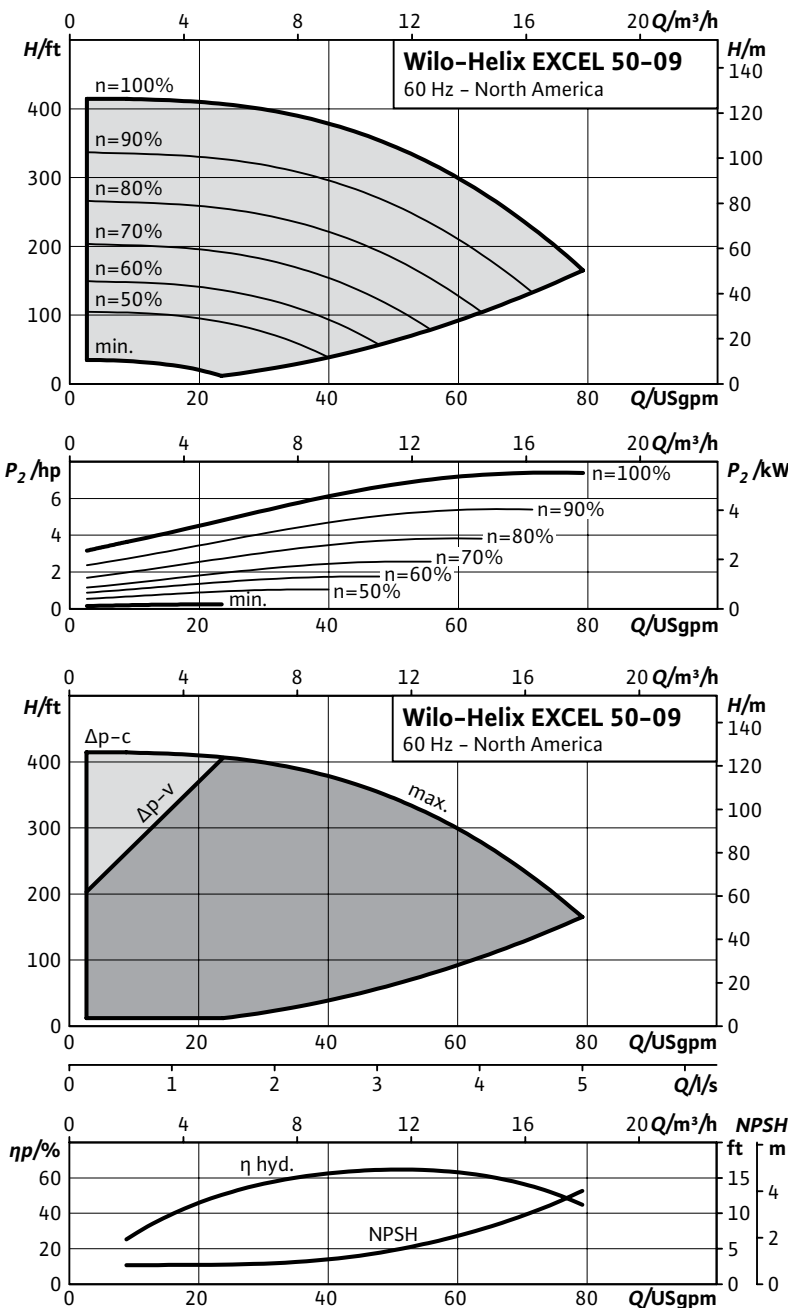
Multistage Pumps

Wilo-Helix EXCEL



Project:	
Engineer:	
Contractor:	
Submitted By:	Date:
Approved By:	Date:

Tag #	Model #	Flow	Head	Volute	Control Mode	HP	Phase	Voltage
	Helix EXCEL 50-09					7.4	3	460



Product Info	
Brand	Wilo
Product Description	Helix Excel

Technical Data	
PEI	0.47
Liquid Temp Range	-22°F to 284°F (-30°C to +120°C)
Fluid Compatibility	Water, up to 50/50 Water-Glycol
Max Operating Pressure	232.1/362.6 PSI
Mains Voltage	460V (±10%) 60Hz
Protection Class	IP 55, Class F Insulation
Ambient Temp Range	5°F to 104°F (-15°C to 40°C)
Ambient Humidity	< 90% without condensation

Materials of Construction		
Pump Volute	AISI 304L*	AISI 316L
Mechanical Seal	EPDM	FKM
Impellers Stage Housings Diffusers	AISI 304L	AISI 316L
Shaft	AISI 304L / AISI 318 LN	AISI 316L / AISI 318LN
O-ring for mechanical seal	EPDM (FKM gasket on request)	EPDM (FKM gasket on request)
Sleeve under the mechanical seal	AISI 316L	AISI 316L

*304 pump volutes are NSF 61 certified

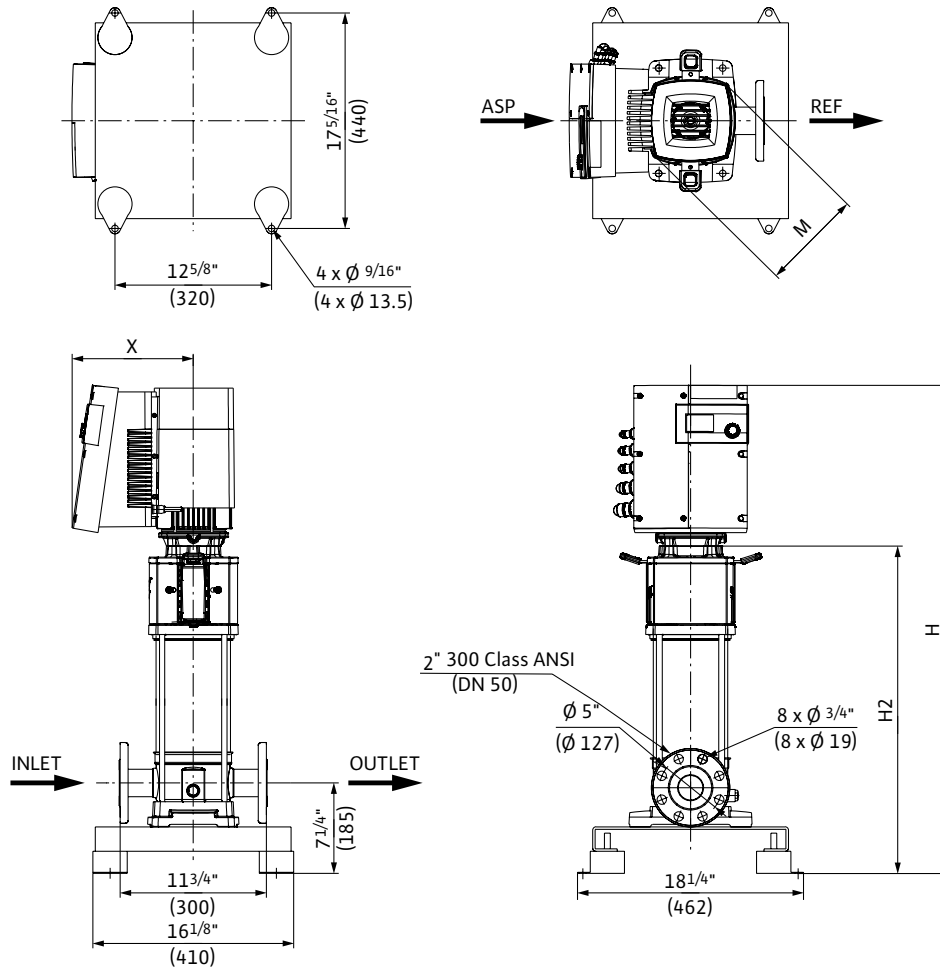
IR Module Selection	
Select	Module
	BACnet / Dual Pump
	LONworks / Dual Pump
	MODBus
	None

Applications	
Water Supply	Pressure Boosting
Boiler Feed	Cooling Systems
Pressure Washing	Irrigation

Submittal Data Sheet

Multistage Pumps

Wilo-Helix EXCEL

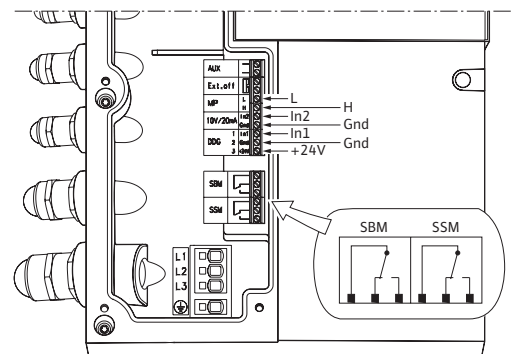


Dimensions and Weights

Model	Dimensions - Inches (mm)				Weight lbs (kg)
	H	H2	ϕM	X	
Helix EXCEL 50-09	$52\frac{3}{16}$	36	$8\frac{3}{4}$	$10\frac{9}{16}$	189.6
	(1325)	(915)	(223)	(268)	(86)

EC Motor Data (Single Motor Operation)

Model	P_2 Rated	Phase	Voltage	FLA	Efficiency
	hp	[~]	[V]	[A]	η_m 100%
Helix EXCEL 50-09	7.4	3	460 ($\pm 10\%$)	8.2	95.8



Submittal Data Sheet

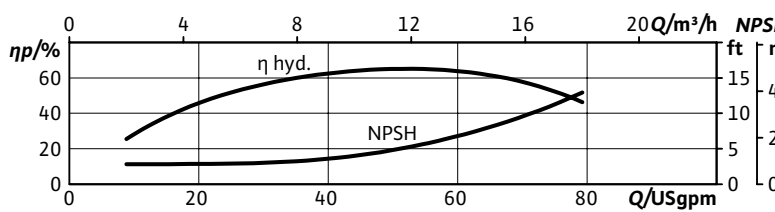
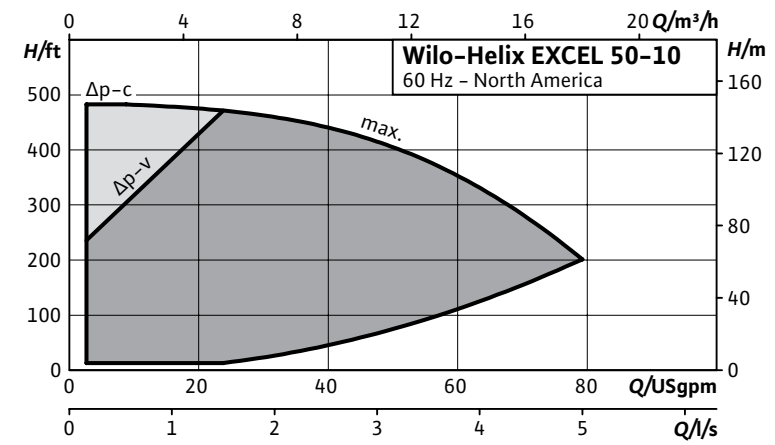
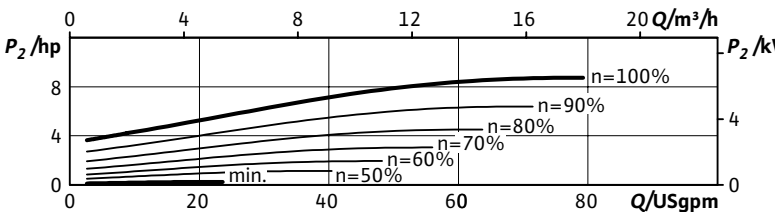
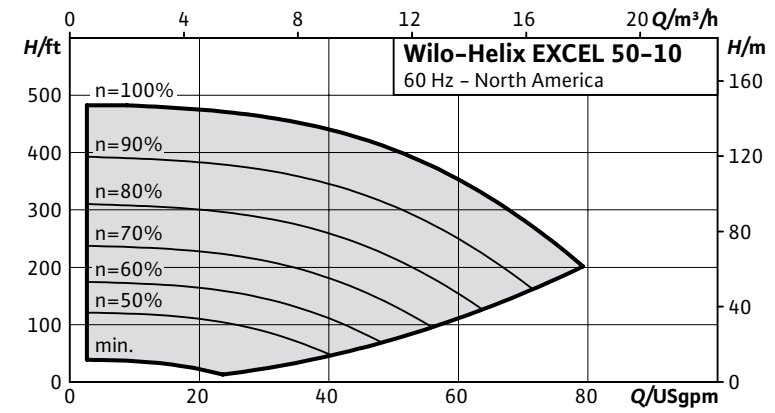
Multistage Pumps

Wilo-Helix EXCEL



Project:	
Engineer:	
Contractor:	
Submitted By:	Date:
Approved By:	Date:

Tag #	Model #	Flow	Head	Volute	Control Mode	HP	Phase	Voltage
	Helix EXCEL 50-10					8.7	3	460



Product Info	
Brand	Wilo
Product Description	Helix Excel

Technical Data	
PEI	0.46
Liquid Temp Range	-22°F to 284°F (-30°C to +120°C)
Fluid Compatibility	Water, up to 50/50 Water-Glycol
Max Operating Pressure	232.1/362.6 PSI
Mains Voltage	460V (±10%) 60Hz
Protection Class	IP 55, Class F Insulation
Ambient Temp Range	5°F to 104°F (-15°C to 40°C)
Ambient Humidity	< 90% without condensation

Materials of Construction		
Pump Volute	AISI 304L*	AISI 316L
Mechanical Seal	EPDM	FKM
Impellers Stage Housings Diffusers	AISI 304L	AISI 316L
Shaft	AISI 304L / AISI 318 LN	AISI 316L / AISI 318LN
O-ring for mechanical seal	EPDM (FKM gasket on request)	EPDM (FKM gasket on request)
Sleeve under the mechanical seal	AISI 316L	AISI 316L

*304 pump volutes are NSF 61 certified

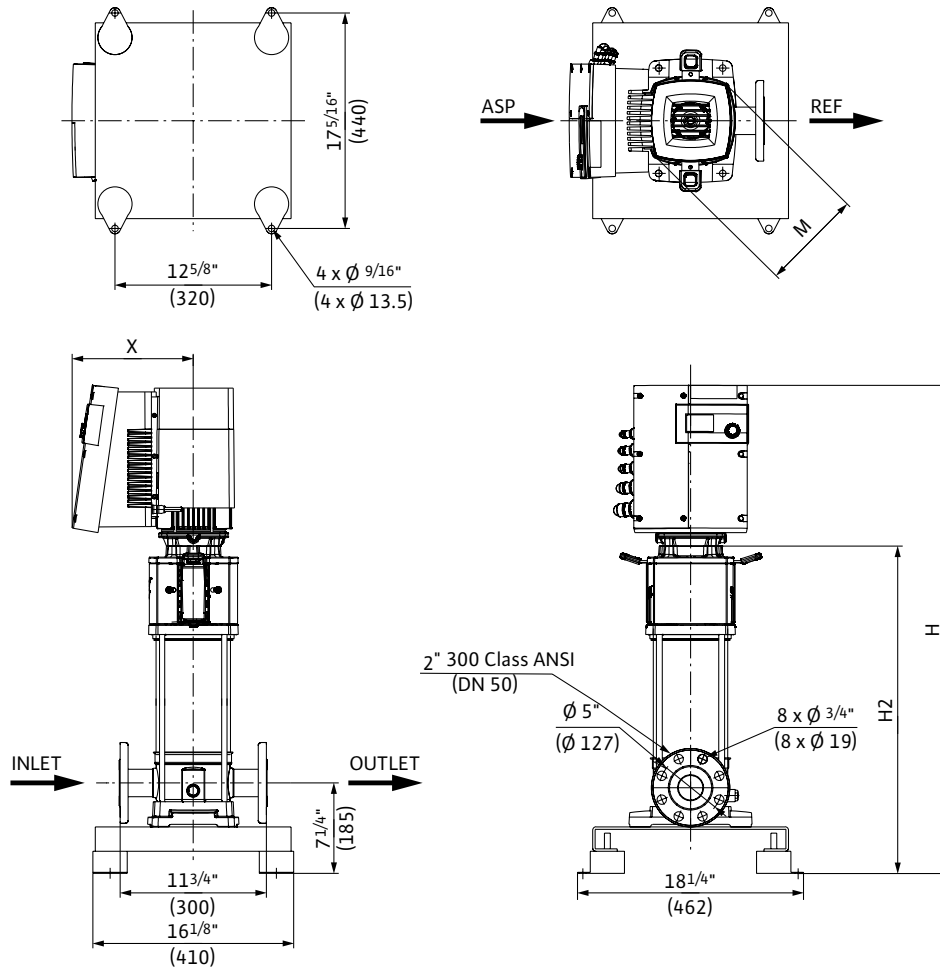
IR Module Selection	
Select	Module
	BACnet / Dual Pump
	LONworks / Dual Pump
	MODBus
	None

Applications	
Water Supply	Pressure Boosting
Boiler Feed	Cooling Systems
Pressure Washing	Irrigation

Submittal Data Sheet

Multistage Pumps

Wilo-Helix EXCEL



Dimensions and Weights

Model	Dimensions - Inches (mm)				Weight lbs (kg)
	H	H2	ϕM	X	
Helix EXCEL 50-10	$54\frac{1}{2}$	$37\frac{1}{2}$	$9\frac{3}{4}$	11	202.8
	(1385)	(952)	(248)	(280)	(92)

EC Motor Data (Single Motor Operation)

Model	P_2 Rated	Phase	Voltage	FLA	Efficiency
	hp	[~]	[V]	[A]	η_m 100%
Helix EXCEL 50-10	8.7	3	460 ($\pm 10\%$)	9.7	96.5

