

# Submittal Data Sheet

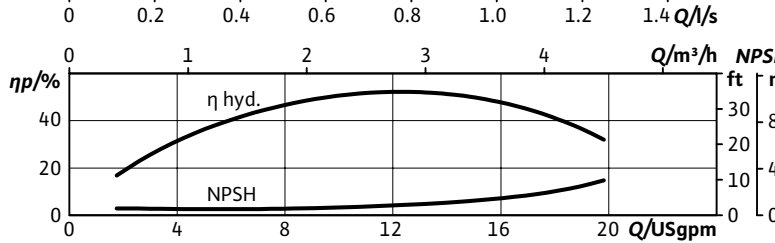
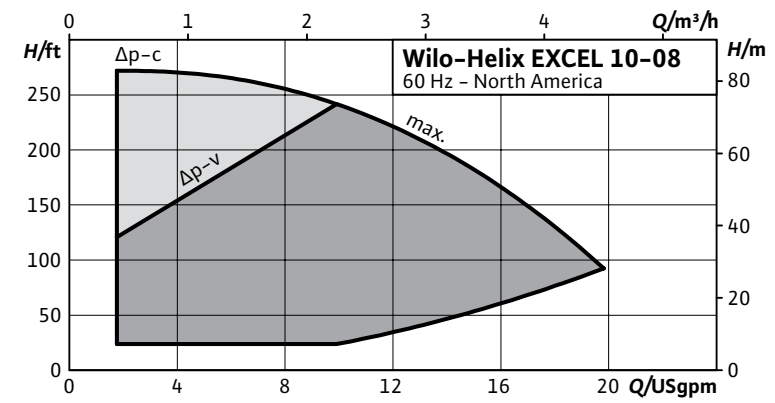
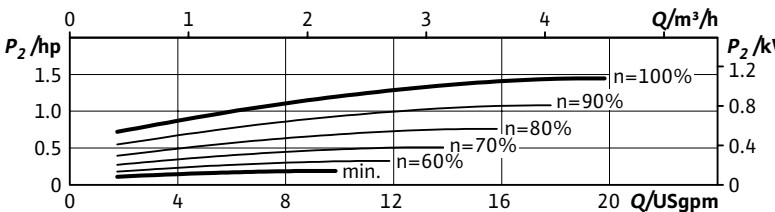
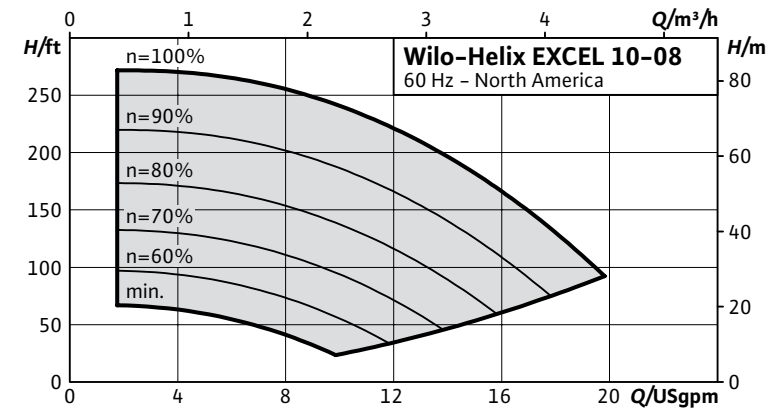
Multistage Pumps

## Wilo-Helix EXCEL



Project:								
Engineer:								
Contractor:								
Submitted By:					Date:			
Approved By:					Date:			

Tag #	Model #	Flow	Head	Volute	Control Mode	HP	Phase	Voltage
	Helix EXCEL 10-08					1.5	3	460



Product Info	
Brand	Wilo
Product Description	Helix Excel

Technical Data	
Liquid Temp Range	-22°F to 284°F (-30°C to +120°C)
Fluid Compatibility	Water, up to 50/50 Water-Glycol
Max Operating Pressure	232.1/362.6 PSI
Mains Voltage	460V (±10%) 60Hz
Protection Class	IP 55, Class F Insulation
Ambient Temp Range	5°F to 104°F (-15°C to 40°C)
Ambient Humidity	< 90% without condensation

Construction Materials		
Pump Volute	AISI 304L*	AISI 316L
Mechanical Seal	EPDM	FKM
Impellers	AISI 304L	AISI 316L
Stage Housings	AISI 318 LN	AISI 318LN
Diffusers		
Shaft		
O-ring for mechanical seal	EPDM (FKM gasket on request)	EPDM (FKM gasket on request)
Sleeve under the mechanical seal	AISI 316L	AISI 316L

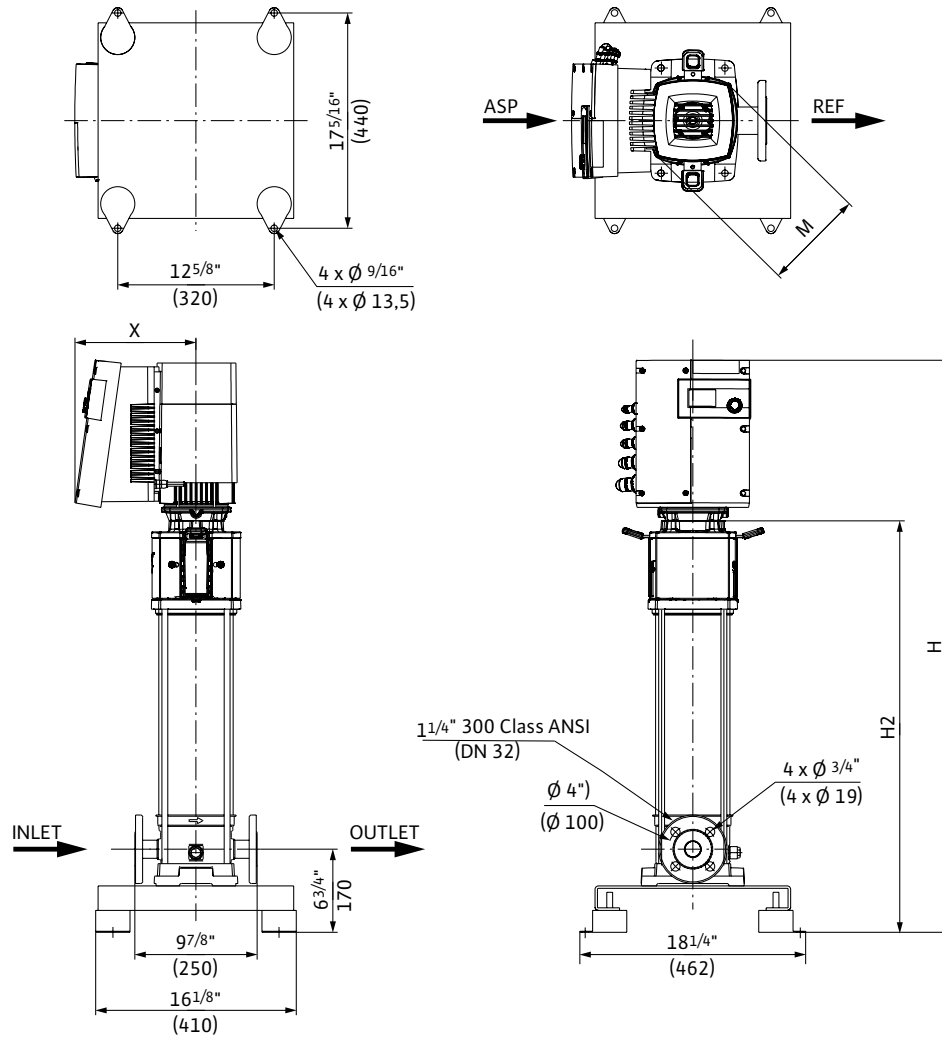
IR Module Selection	
Select	Module
	BACnet / Dual Pump
	LONworks / Dual Pump
	MODBus
	None

Applications	
Water Supply	Pressure Boosting
Boiler Feed	Cooling Systems
Pressure Washing	Irrigation

# Submittal Data Sheet

Multistage Pumps

## Wilo-Helix EXCEL

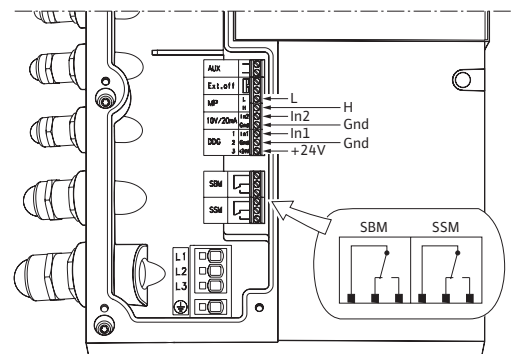


### Dimensions and Weights

Model	Dimensions - Inches (mm)				Weight lbs (kg)
	H	H2	$\phi M$	X	
Helix EXCEL 10-08	38	$25\frac{1}{16}$	$8\frac{3}{8}$	$9\frac{3}{4}$	115
	(965)	(637)	(206)	(248)	(52)

### EC Motor Data (Single Motor Operation)

Model	$P_2$ Rated	Phase	Voltage	FLA	Efficiency
	hp	[~]	[V]	[A]	$\eta_m$ 100%
Helix EXCEL 10-08	1.50	3	460 ( $\pm 10\%$ )	1.76	92.0



# Submittal Data Sheet

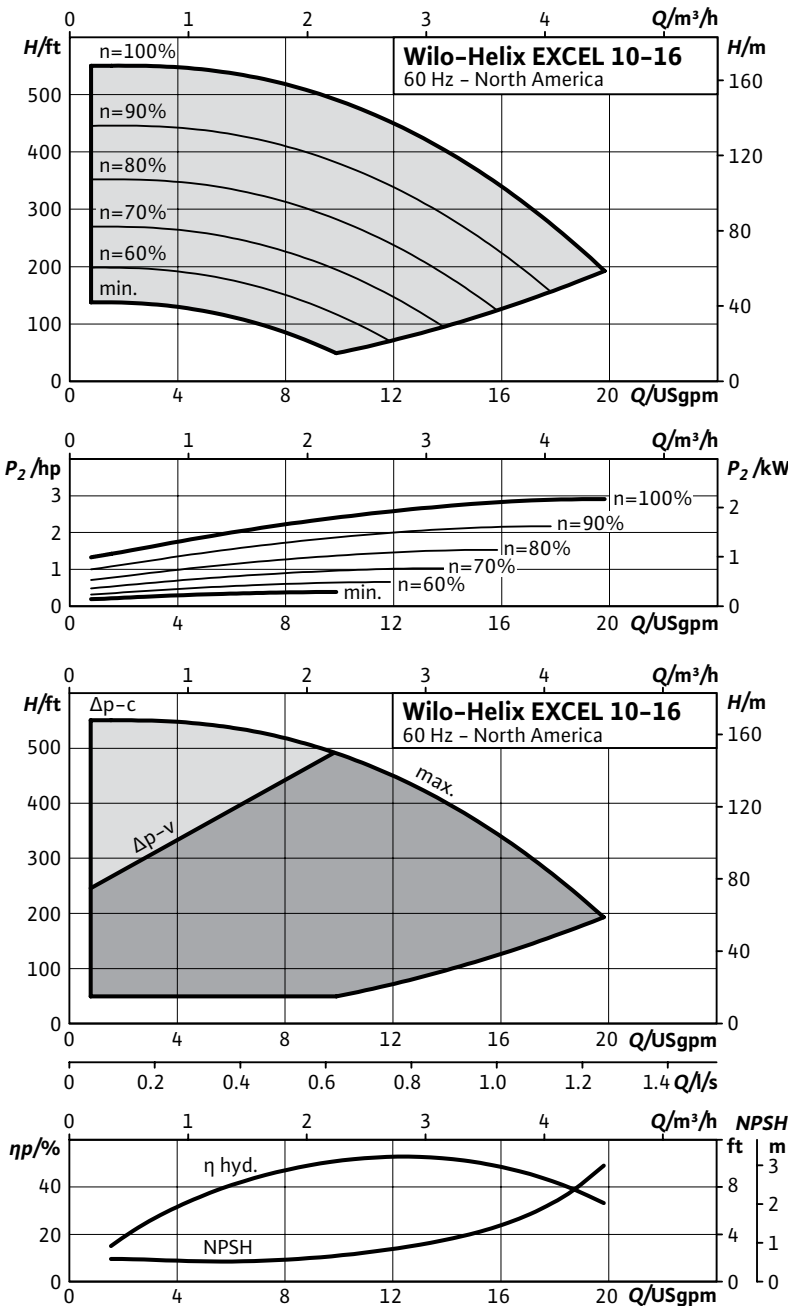
Multistage Pumps

## Wilo-Helix EXCEL



Project:			
Engineer:			
Contractor:			
Submitted By:			Date:
Approved By:			Date:

Tag #	Model #	Flow	Head	Volute	Control Mode	HP	Phase	Voltage
	Helix EXCEL 10-16					3	3	460



### Product Info

Brand	Wilo
Product Description	Helix Excel

### Technical Data

Liquid Temp Range	-22°F to 284°F (-30°C to +120°C)
Fluid Compatibility	Water, up to 50/50 Water-Glycol
Max Operating Pressure	232.1/362.6 PSI
Mains Voltage	460V (±10%) 60Hz
Protection Class	IP 55, Class F Insulation
Ambient Temp Range	5°F to 104°F (-15°C to 40°C)
Ambient Humidity	< 90% without condensation

### Materials of Construction

Pump Volute	AISI 304L*	AISI 316L
Mechanical Seal	EPDM	FKM
Impellers Stage Housings Diffusers	AISI 304L	AISI 316L
Shaft	AISI 304L / AISI 318 LN	AISI 316L / AISI 318LN
O-ring for mechanical seal	EPDM (FKM gasket on request)	EPDM (FKM gasket on request)
Sleeve under the mechanical seal	AISI 316L	AISI 316L

\*304 pump volutes are NSF 61 certified

### IR Module Selection

Select	Module
	BACnet / Dual Pump
	LONworks / Dual Pump
	MODBus
	None

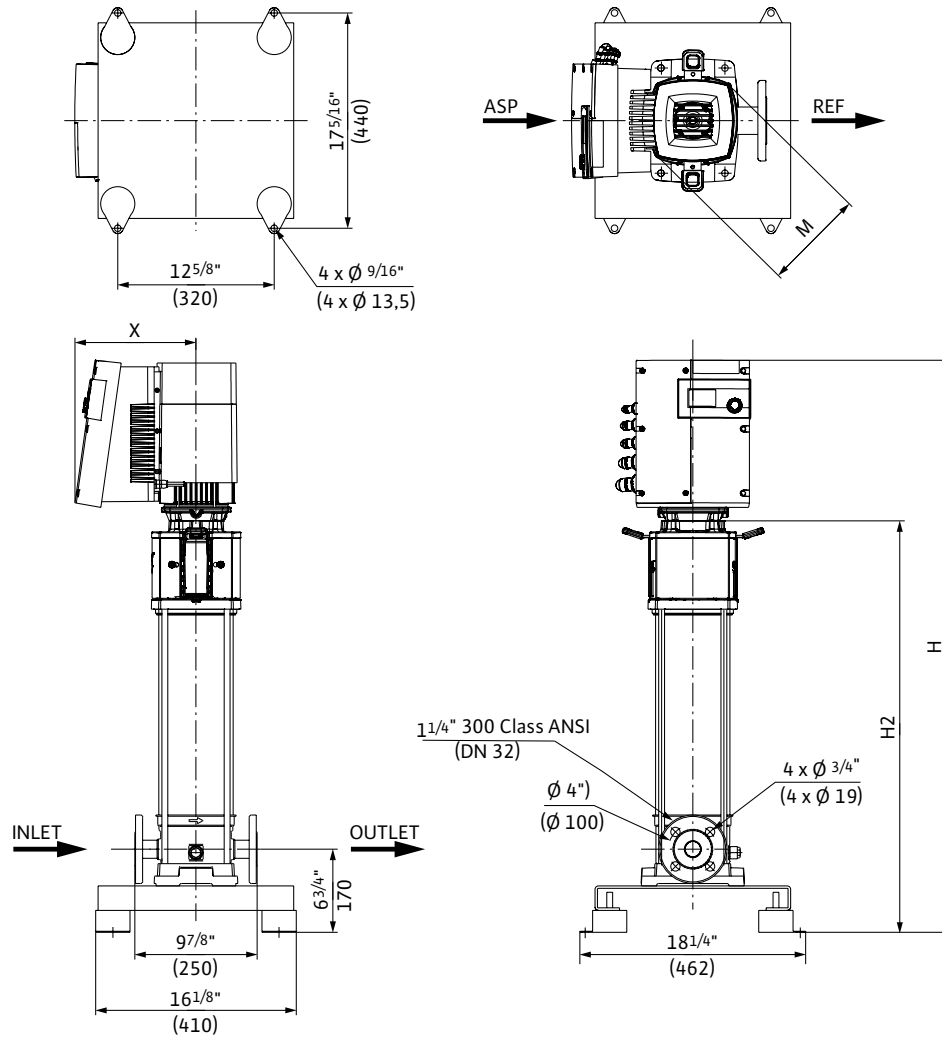
### Applications

Water Supply	Pressure Boosting
Boiler Feed	Cooling Systems
Pressure Washing	Irrigation

# Submittal Data Sheet

Multistage Pumps

## Wilo-Helix EXCEL

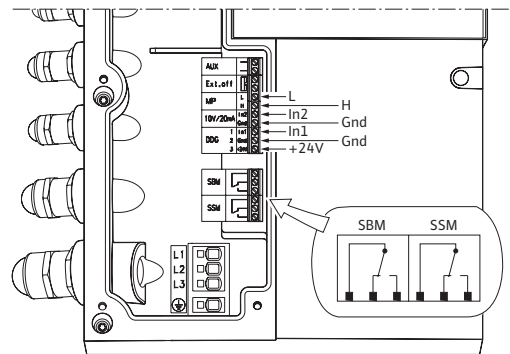


### Dimensions and Weights

Model	Dimensions - Inches (mm)				Weight lbs (kg)
	H	H <sub>2</sub>	ØM	X	
Helix EXCEL 10-16	$46\frac{1}{4}"$	$33\frac{3}{8}"$	$8\frac{1}{8}"$	$9\frac{3}{4}"$	130.07 (59)
	(1175)	(847)	(206)	(248)	

### EC Motor Data (Single Motor Operation)

Model	P <sub>2</sub> Rated	Phase	Voltage	FLA	Efficiency
	hp	[~]	[V]	[A]	η <sub>m</sub> 100%
Helix EXCEL 10-16	3.0	3	460 (±10%)	4.4	93.0



# Submittal Data Sheet

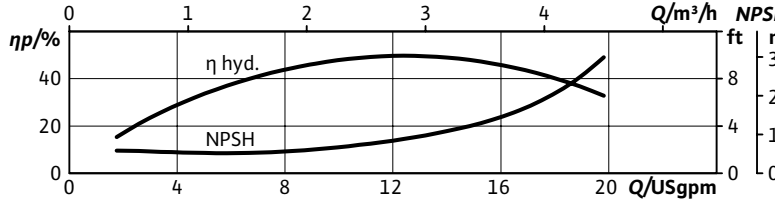
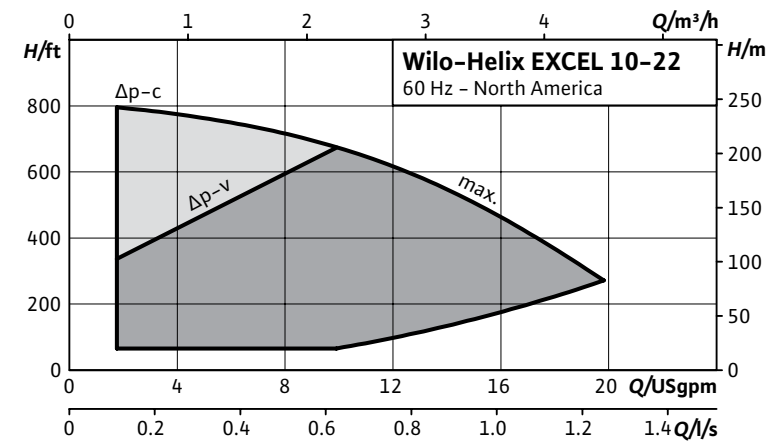
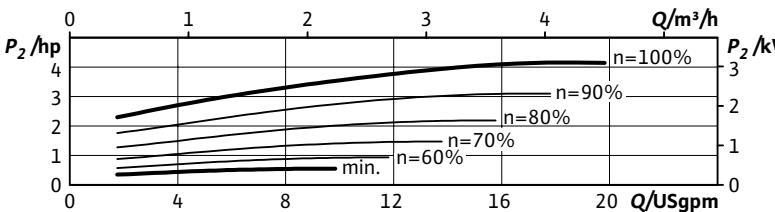
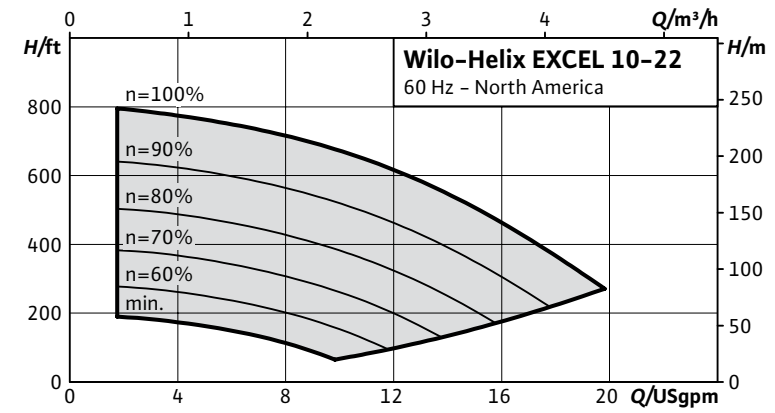
Multistage Pumps

## Wilo-Helix EXCEL



Project:	
Engineer:	
Contractor:	
Submitted By:	Date:
Approved By:	Date:

Tag #	Model #	Flow	Head	Volute	Control Mode	HP	Phase	Voltage
	Helix EXCEL 10-22					4.3	3	460



Product Info	
Brand	Wilo
Product Description	Helix Excel

Technical Data	
Liquid Temp Range	-22°F to 284°F (-30°C to +120°C)
Fluid Compatibility	Water, up to 50/50 Water-Glycol
Max Operating Pressure	232.1/362.6 PSI
Mains Voltage	460V (±10%) 60Hz
Protection Class	IP 55, Class F Insulation
Ambient Temp Range	5°F to 104°F (-15°C to 40°C)
Ambient Humidity	< 90% without condensation

Materials of Construction		
Pump Volute	AISI 304L*	AISI 316L
Mechanical Seal	EPDM	FKM
Impellers Stage Housings Diffusers	AISI 304L	AISI 316L
Shaft	AISI 304L / AISI 318 LN	AISI 316L / AISI 318LN
O-ring for mechanical seal	EPDM (FKM gasket on request)	EPDM (FKM gasket on request)
Sleeve under the mechanical seal	AISI 316L	AISI 316L

\*304 pump volutes are NSF 61 certified

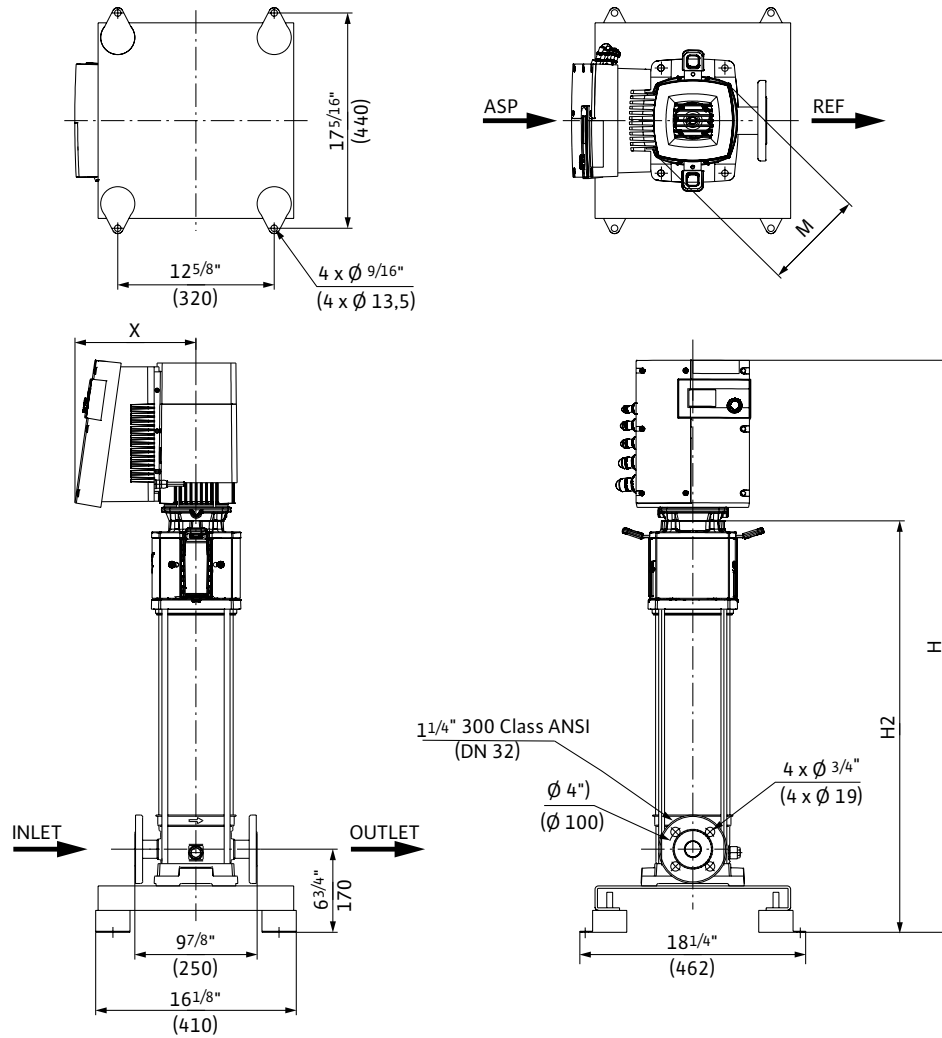
IR Module Selection	
Select	Module
	BACnet / Dual Pump
	LONworks / Dual Pump
	MODBus
	None

Applications	
Water Supply	Pressure Boosting
Boiler Feed	Cooling Systems
Pressure Washing	Irrigation

# Submittal Data Sheet

Multistage Pumps

## Wilo-Helix EXCEL



### Dimensions and Weights

Model	Dimensions - Inches (mm)				Weight lbs (kg)
	H	H2	$\varnothing M$	X	
Helix EXCEL 10-16	54 1/2	41 5/8	8 3/8	9 3/4	136.7
	(1385)	(1057)	(206)	(248)	(62)

### EC Motor Data (Single Motor Operation)

Model	P <sub>2</sub> Rated	Phase	Voltage	FLA	Efficiency
	hp	[~]	[V]	[A]	$\eta_m$ 100%
Helix EXCEL 10-22	4.3	3	460 (±10%)	6.0	93.0

