

Zubehör - Accessories - Accessoires

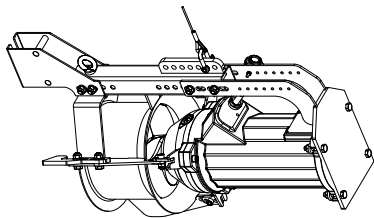
Flumen EXCEL RZPE 25-3  
AVR 60 - AVRZ 60 - AVRZD 60

**wilo**

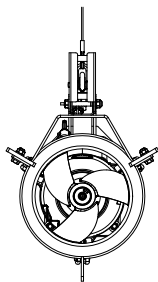
Heimgartenstraße 1-3 D-95030 Hof/Saale  
Telefon +49 9281 974-0 Fax +49 9281 96528  
www.wilo.com E-Mail: info@wilo.com

Kunde Customer Client	Projekt Project Projet	Angebot - Quotation - Offre Auftrag - Order - Commande Nr. - No.:
-----------------------------	------------------------------	---

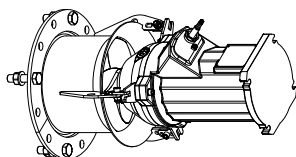
Auftragsbezogene Maße X =  mm  
Dimensions acc. to order L =  mm  
Dimensions selon commande



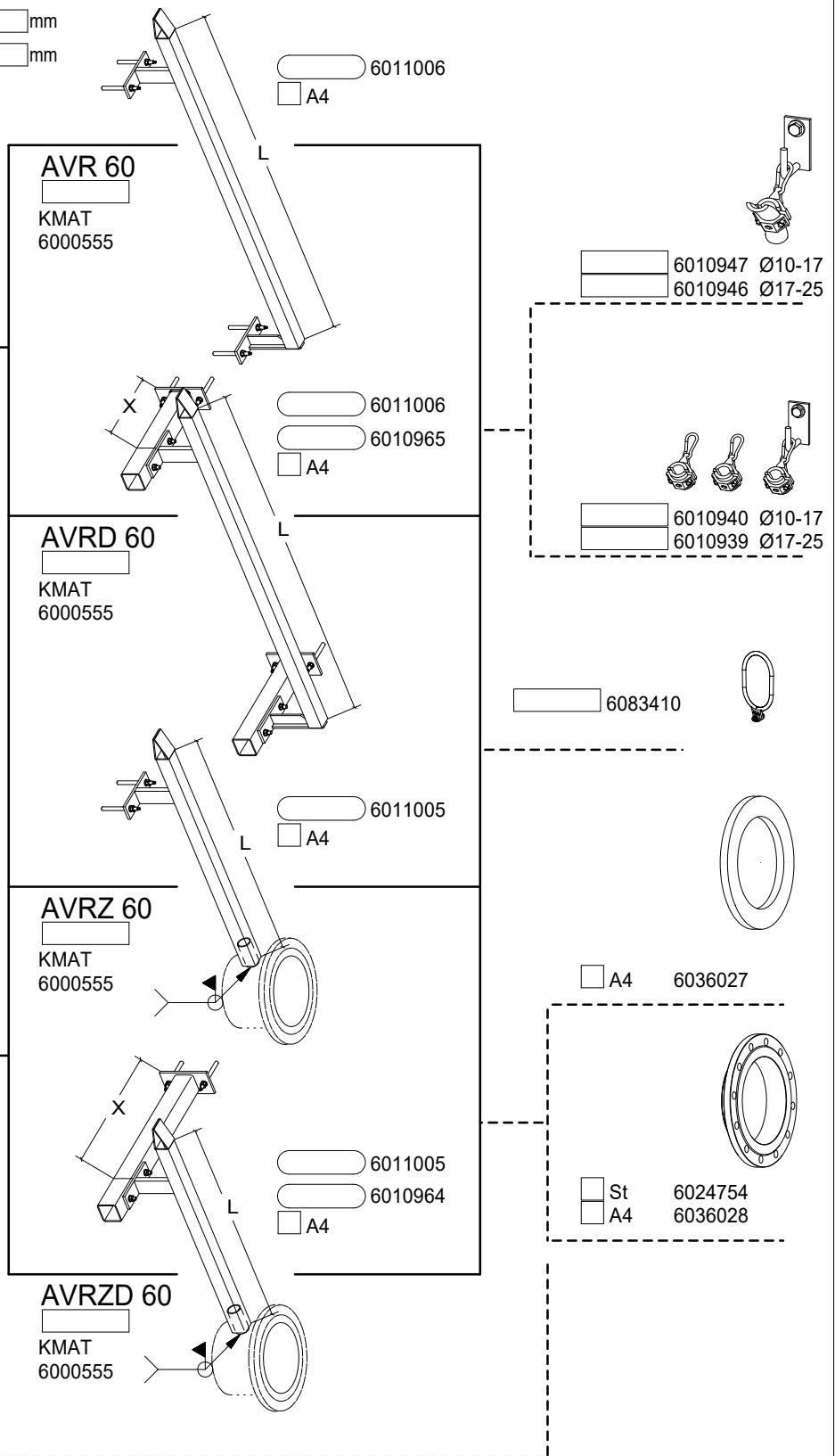
DN250 RZPE 25-3



RZPE 25-3. - /  
KMAT 6089720



DN250



A4 = 1.4571 / AISI 316Ti / Z 6 CNDT 17-12

A2 = 1.4301 / AISI 304 / Z 7 CN 18-09

St = Stahl / steel / acier

= Befestigungssatz / fixing elements / éléments de fixation