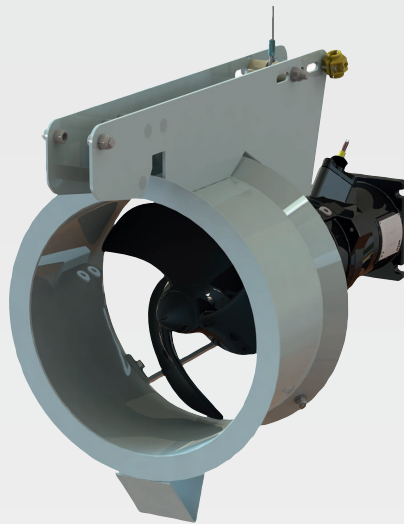


Wilo-EMU RZP 20-1 ... 80-2



zh-CHS 安装及操作说明

en Installation and operating instructions



Chinese (simplified)	4
English	9

目录表

1	概述	5
1.1	关于本说明书.....	5
2	应用/使用	5
2.1	规定用途.....	5
3	产品说明	5
3.1	结构.....	5
3.2	型号代码.....	5
4	运输和存放	5
4.1	吊挂点.....	6
5	安装	6
5.1	安装方式.....	6
5.2	固定安装到排放管内.....	6
5.3	以灵活方式安装到下降装置中.....	7
5.4	安装额外的附加部件.....	7

1 概述

1.1 关于本说明书

此安装及操作说明是 RZP 系列潜水搅拌机现有说明书的扩展版本。作业前请阅读本说明书。请妥善保管说明书，以备随时使用。合规使用和正确处理再循环泵，遵从所有数据。遵守产品上的所有数据和标志。

原版操作说明书以德语撰写。所有其它语种的说明书均为其翻译件。

2 应用/使用

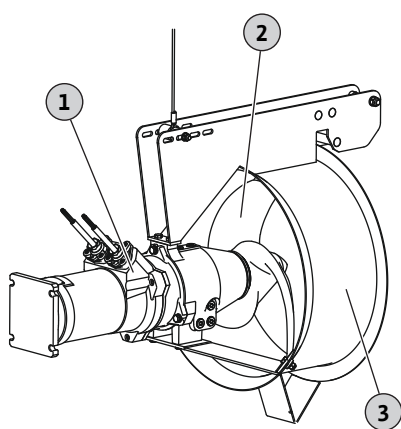
2.1 规定用途

泵送介质：

- 含有粪便的污水
- 生产用水
- 污水
- 工业用水

3 产品说明

3.1 结构



再循环泵由以下部件构成：

1	TR 系列的潜水搅拌机
2	螺旋桨，针对应用而优化的流动式壳体。
3	不锈钢制流动式壳体

Fig. 1: RZP 的概述

3.2 型号代码

示例：Wilo-EMU RZP 50-3.43-4/12REx S10

RZP	再循环泵
50	x10 = 螺旋桨直径，单位 mm
3	结构模型
43	螺旋桨转速，单位 rpm
4	极数
12	x10 = 定子组件长度，单位 mm
R	电机规格： R = 搅拌机规格 V = 搅拌机规格，降功耗
Ex	获得防爆认证
S10	特种螺旋桨的螺旋桨代码（不适用标准型螺旋桨）

4 运输和存放

4.1 吊挂点

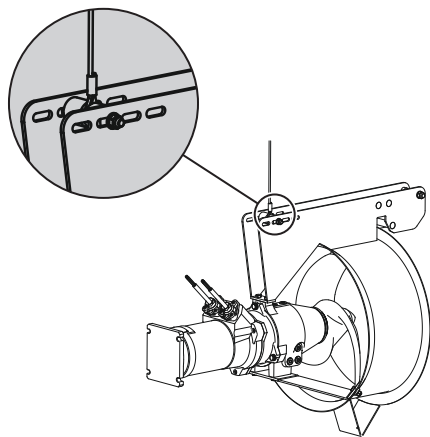


Fig. 2: 吊挂点 EMU RZP

- 提升设备直接吊挂在流动式壳体上。
- 提升设备必须带有吊索套环。
注意！不得使用 U 形环！
- 通过长孔调整中心。再循环泵的倾角约 5° 向下。

固定提升设备

1. 松开螺栓上的六角螺母。
 2. 抽出螺栓并取下塑料套管。
 3. 将提升设备套到螺栓上。
 4. 用塑料套管盖住。
⇒ 提升设备固定在两个塑料套管之间的螺栓上。
 5. 螺栓通过插孔与六角螺母固定。
- 提升设备已固定完毕。

5 安装

5.1 安装方式

- 固定在排放管上
- 以灵活方式安装在下降装置上

注意！无法在不同高度和方向上运行！

5.2 固定安装到排放管内

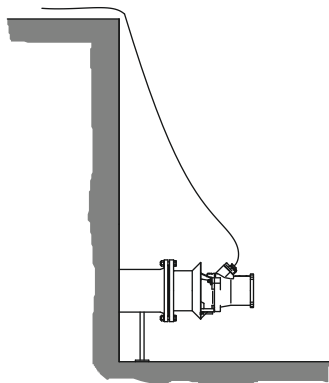


Fig. 3: 固定的安装方式

直接安装到排放管上时，再循环泵需要用法兰安装到流动环上。用符合工程技术的螺钉将水泵安装到排放管的法兰上。整个作业过程只能在水池无水的情况下进行。

- ✓ 升降装置，比如：叉车
 - ✓ 水泵上用于提升的运输面
 - ✓ 支架
 - ✓ 固定件
1. 将水泵定位在运输面上，采取防止滑移和坠落的防范措施。
 2. 提升水泵并定位到排放管上。
 3. 将水泵安装到排放管上。
注意！请注意螺钉所需的紧固性！
 4. 轻轻从水池中拉出连接电缆。
小心！连接电缆不允许拉入到螺旋桨内！
- 水泵已安装完毕。执行电气连接。

5.3 以灵活方式安装到下降装置中

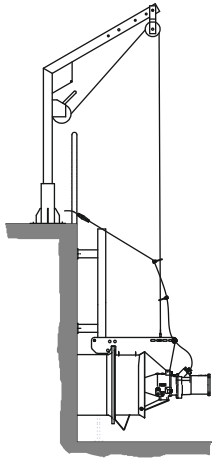


Fig. 4: 灵活的安装方式

这种安装方式类似于潜水搅拌器的安装方式。请注意以下几点：

- 再循环泵不能在不同高度上操作。
- 必须在排放管彻底排净后才能安放流动环。
- 不得通过电机上的框架引导导流管。需要通过流动环引导。
- 再循环泵排放时，向下倾斜约 5°。相应地对齐吊挂点。
- **注意！** 对于 RZP 50-3...、RZP 60-3... 和 RZP 80-2...，需要在排放管上安装额外的附加部件。请参见以下章节！

5.4 安装额外的附加部件

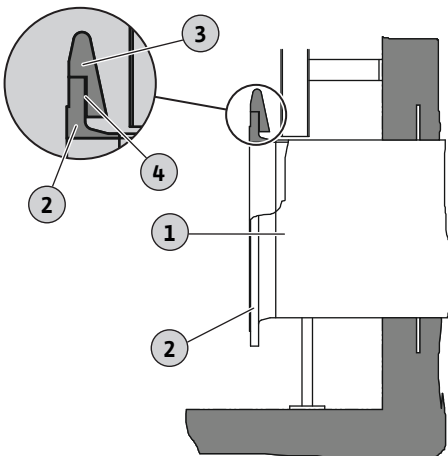
根据型号安装以下附加部件：

- 楔形压块
有助于在排放管上安放流动环，使拆卸再循环泵更加轻松。
- 爪形件
有助于在排放管上安放流动环。

分配到水泵的附加部件

型号	RZP 20	RZP 25-2	RZP 40	RZP 50-2	RZP 50-3	RZP 60-2	RZP 60-3	RZP 80-2
楔形压块	-	-	-	-	•	-	•	•
爪形件	-	-	-	-	-	-	-	•

5.4.1 安装楔形压块 - 带有对焊法兰的排放管

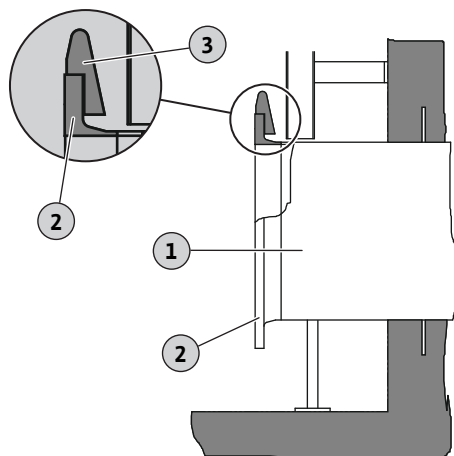


1	排放管
2	法兰（对焊法兰）
3	楔形压块
4	2 mm 金属垫片

- 垂直方向对齐楔形压块！
- 法兰和楔形压块之间放入 2 mm 金属板！

Fig. 5: 楔形压块：带有对焊法兰的排放管

5.4.2 安装楔形压块 - 带有法兰钢圈的排放管

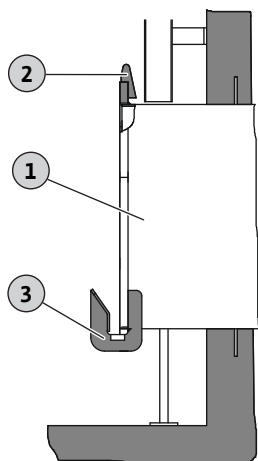


1	排放管
2	法兰 (钢圈)
3	楔形压块

- 垂直方向对齐楔形压块！
- 楔形压块直接安放在法兰上！

Fig. 6: 楔形压块：带有对焊法兰的排放管

5.4.3 安装额外的爪形件



1	排放管
2	楔形压块
3	爪形件

注意！安装额外的爪形件时，请注意辅助图！

Fig. 7: 带有爪形件的排放管

Table of contents

1	General information	10
1.1	About these instructions	10
2	Application/use	10
2.1	Intended use	10
3	Product description	10
3.1	Construction	10
3.2	Type key	10
4	Transportation and storage	10
4.1	Attachment point	11
5	Installation.....	11
5.1	Installation types.....	11
5.2	Stationary installation at the discharge pipe	11
5.3	Flexible installation with lowering device	12
5.4	Installing additional attachment parts.....	12

1 General information

1.1 About these instructions

These installation and operating instructions extend the current instructions for submersible mixers with the RZP series. Read these instructions before commencing work. Keep the instructions in an accessible place at all times. Adherence to all instructions is a requirement for the intended use and correct operation of the recirculation pump. All specifications and markings on the product must be observed.

The language of the original operating instructions is German. All other languages of these instructions are translations of the original operating instructions.

2 Application/use

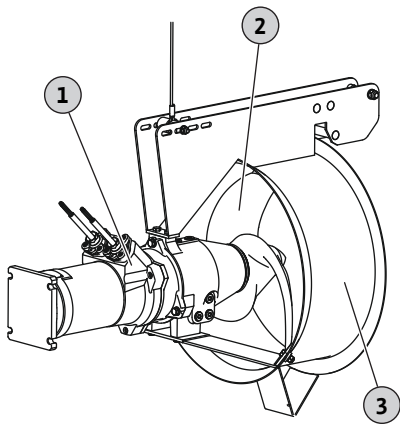
2.1 Intended use

Pumping of:

- Sewage containing faeces
- Process sewage
- Wastewater
- Industrial water

3 Product description

3.1 Construction



The recirculation pump consists of the following main components:

1	Submersible mixer of the TR series
2	Propeller, optimised for use in the flow housing.
3	Flow housing made of stainless steel

Fig. 1: Overview RZP

3.2 Type key

Example: Wilo-EMU RZP 50-3.43-4/12REx S10	
RZP	Recirculation pump
50	x10 = nominal propeller diameter in mm
3	Model
43	Rated propeller speed in rpm
4	Number of poles
12	x10 = stator pack length in mm
R	Motor version: R = mixer version V = mixer version with reduced power
Ex	Ex-rated
S10	Propeller code for special propeller (omitted for standard propeller)

4 Transportation and storage

4.1 Attachment point

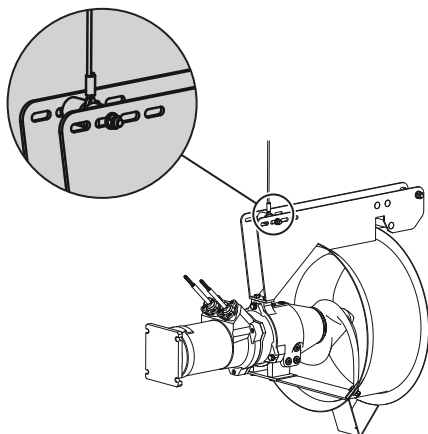


Fig. 2: Attachment point EMU RZP

- Attach lifting equipment directly to the flow housing.
- Lifting equipment must have a rope thimble.
NOTICE! Do not use shackles!
- Use the slotted holes to adjust the centre of gravity. Inclination angle of the recirculation pump: approx. 5° downward.

Attaching the lifting equipment

1. Loosen the hexagon nut at the bolt.
 2. Pull out the bolt and remove the plastic sleeve.
 3. Attach the lifting equipment to the bolt.
 4. Fit the plastic sleeve.
⇒ Lifting equipment attached at the bolt between two plastic sleeves.
 5. Insert bolt into the hole and tighten with the hexagon nut.
- Lifting equipment is attached.

5 Installation

5.1 Installation types

- Stationary at the discharge pipe
- Flexible installation with lowering device

NOTICE! Operation at different heights and directions is not possible!

5.2 Stationary installation at the discharge pipe

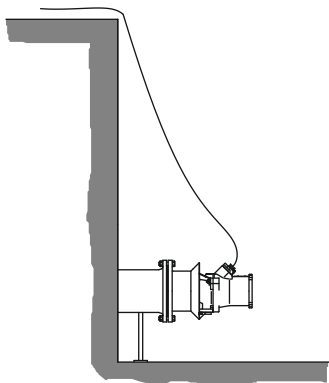


Fig. 3: Stationary installation

The recirculation pump is fitted with a flange at the flow ring for direct installation at the discharge pipe. The pump is attached to the flange of the discharge pipe using technically approved screws. All work may only be performed when the basin is empty.

- ✓ Hoisting gear, e.g. forklift
 - ✓ Transport space for lifting the pump
 - ✓ Scaffolding
 - ✓ Fixation material
1. Position the pump on the transport space and secure against slipping and falling over.
 2. Lift the pump and position at the discharge pipe.
 3. Attach the pump to the discharge pipe.
NOTICE! Ensure that the screws are the correct strength.
 4.
Lead the connection cable out of the basin keeping it slightly taut.**CAUTION! The connection cable must not get pulled into the propeller!**
- Pump is installed. Make the electrical connection.

5.3 Flexible installation with lowering device

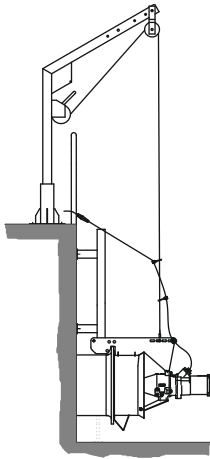


Fig. 4: Flexible installation

Installation is performed in the same manner as installation of the submersible mixer. Observe the following points:

- The recirculation pump may not be operated at different heights.
- The flow ring must lie fully at the discharge pipe after draining.
- The guide at the guide pipe is **not** performed through a frame on the motor. The guide is performed through the flow ring.
- When lowering the recirculation pump, tilt it downward by approx. 5°. Align the attachment point accordingly.
- **NOTICE! Install additional attachment parts at the discharge pipe for types RZP 50-3..., RZP 60-3... and RZP 80-2... See the following chapter.**

5.4 Installing additional attachment parts

Install the following attachment parts, depending on type:

- Pressure wedge
Enables a closer fit of the flow ring at the discharge pipe and easier dismantling of the recirculation pump.
- Claw
Enables a closer fit of the flow ring at the discharge pipe.

Assignment of attachment part to pump

Type	RZP 20	RZP 25-2	RZP 40	RZP 50-2	RZP 50-3	RZP 60-2	RZP 60-3	RZP 80-2
Pressure wedge	-	-	-	-	•	-	•	•
Claw	-	-	-	-	-	-	-	•

5.4.1 Installation pressure wedge – discharge pipe with weld neck flange

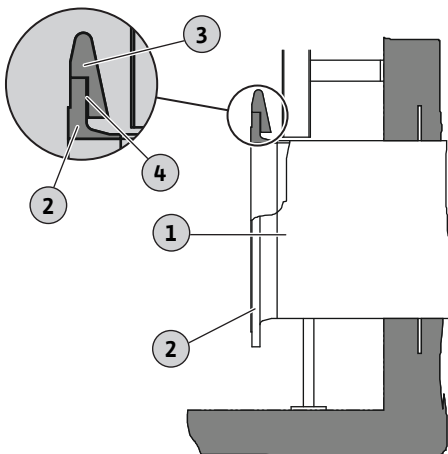
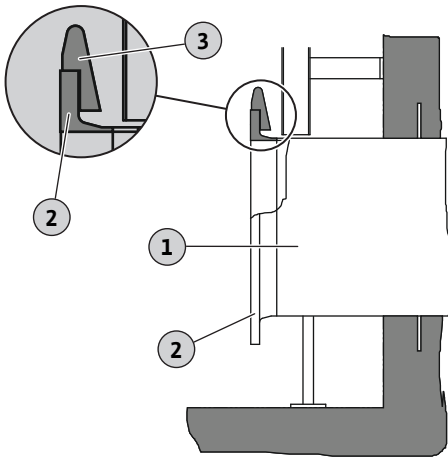


Fig. 5: Pressure wedge: Discharge pipe with weld neck flange

1	Discharge pipe
2	Flange (weld neck flange)
3	Pressure wedge
4	2 mm metal support

- Align the pressure wedge perpendicularly.
- Insert a 2 mm metal sheet between flange and pressure wedge.

5.4.2 Installation pressure wedge – discharge pipe with steel ring flange

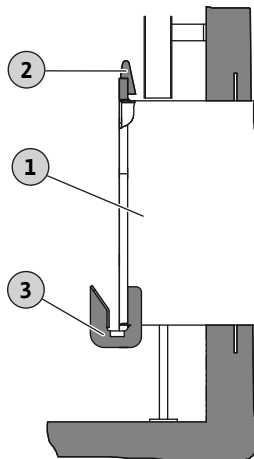


1	Discharge pipe
2	Flange (steel ring)
3	Pressure wedge

- Align the pressure wedge perpendicularly.
- Affix the pressure wedge directly at the flange.

Fig. 6: Pressure wedge: Discharge pipe with weld neck flange

5.4.3 Installing the additional claw



1	Discharge pipe
2	Pressure wedge
3	Claw

NOTICE! Observe the consulting aid when installing the additional claw.

Fig. 7: Discharge pipe with claw



Wilo – International (Subsidiaries)

Argentina

WILO SALMSON
Argentina S.A.
C1295ABI Ciudad
Autónoma de Buenos Aires
T +54 11 4361 5929
matias.monea@wilo.com.ar

Australia

WILO Australia Pty Limited
Murrarie, Queensland, 4172
T +61 7 3907 6900
chris.dayton@wilo.com.au

Austria

WILO Pumpen Österreich
GmbH
2351 Wiener Neudorf
T +43 507 507-0
office@wilo.at

Azerbaijan

WILO Caspian LLC
1065 Baku
T +994 12 5962372
info@wilo.az

Belarus

WILO Bel IOOO
220035 Minsk
T +375 17 3963446
wilo@wilo.by

Belgium

WILO NV/SA
1083 Ganshoren
T +32 2 4823333
info@wilo.be

Bulgaria

WILO Bulgaria EOOD
1125 Sofia
T +359 2 9701970
info@wilo.bg

Brazil

WILO Comercio e
Importacao Ltda
Jundiaí – São Paulo – Brasil
13.213-105
T +55 11 2923 9456
wilo@wilo-brasil.com.br

Canada

WILO Canada Inc.
Calgary, Alberta T2A 5L7
T +1 403 2769456
info@wilo-canada.com

China

WILO China Ltd.
101300 Beijing
T +86 10 58041888
wiloobj@wilo.com.cn

Croatia

WILO Hrvatska d.o.o.
10430 Samobor
T +38 51 3430914
wilo-hrvatska@wilo.hr

Cuba

WILO SE
Oficina Comercial
Edificio Simona Apto 105
Siboney. La Habana. Cuba
T +53 5 2795135
T +53 7 272 2330
raul.rodriguez@wilo-cuba.com

Czech Republic

WILO CS, s.r.o.
25101 Cestlice
T +420 234 098711
info@wilo.cz

Denmark

WILO Nordic
Drejergangen 9
DK-2690 Karlslunde
T +45 70 253 312
wilo@wilo.dk

Estonia

WILO Eesti OÜ
12618 Tallinn
T +372 6 509780
info@wilo.ee

Finland

WILO Nordic
Tillinmäentie 1 A
FIN-02330 Espoo
T +358 207 401 540
wilo@wilo.fi

France

Wilo Salmson France S.A.S.
53005 Laval Cedex
T +33 2435 95400
info@wilo.fr

United Kingdom

WILO (U.K.) Ltd.
Burton Upon Trent
DE14 2WJ
T +44 1283 523000
sales@wilo.co.uk

Greece

WILO Hellas SA
4569 Anixi (Attika)
T +302 10 6248300
wilo.info@wilo.gr

Hungary

WILO Magyarország Kft
2045 Törökbálint
(Budapest)
T +36 23 889500
wilo@wilo.hu

India

Wilo Mather and Platt Pumps
Private Limited
Pune 411019
T +91 20 27442100
services@matherplatt.com

Indonesia

PT. WILO Pumps Indonesia
Jakarta Timur, 13950
T +62 21 7247676
citrawilo@cbn.net.id

Ireland

WILO Ireland
Limerick
T +353 61 227566
sales@wilo.ie

Italy

WILO Italia s.r.l.
Via Novegro, 1/A20090
Segrate MI
T +39 25538351
wilo.italia@wilo.it

Kazakhstan

WILO Central Asia
050002 Almaty
T +7 727 312 40 10
info@wilo.kz

Korea

WILO Pumps Ltd.
20 Gangseo, Busan
T +82 51 950 8000
wilo@wilo.co.kr

Latvia

WILO Baltic SIA
1019 Riga
T +371 6714-5229
info@wilo.lv

Lebanon

WILO LEBANON SARL
Jdeideh 1202 2030
Lebanon
T +961 1 888910
info@wilo.com.lb

Lithuania

WILO Lietuva UAB
03202 Vilnius
T +370 5 2136495
mail@wilo.lt

Morocco

WILO Maroc SARL
20250 Casablanca
T +212 (0) 5 22 66 09 24
contact@wilo.ma

The Netherlands

WILO Nederland B.V.
1551 NA Westzaan
T +31 88 9456 000
info@wilo.nl

Norway

WILO Nordic
Alf Bjerckes vei 20
NO-0582 Oslo
T +47 22 80 45 70
wilo@wilo.no

Poland

WILO Polska Sp. z o.o.
5-506 Lesznowola
T +48 22 7026161
wilo@wilo.pl

Portugal

Bombas Wilo-Salmson
Sistemas Hidraulicos Lda.
4475-330 Maia
T +351 22 2080350
bombas@wilo.pt

Romania

WILO Romania s.r.l.
077040 Com. Chiajna
Jud. Ilfov
T +40 21 3170164
wilo@wilo.ro

Russia

WILO Rus ooo
123592 Moscow
T +7 496 514 6110
wilo@wilo.ru

Saudi Arabia

WILO Middle East KSA
Riyadh 11465
T +966 1 4624430
wshoula@wataniaind.com

Serbia and Montenegro

WILO Beograd d.o.o.
11000 Beograd
T +381 11 2851278
office@wilo.rs

Slovakia

WILO CS s.r.o., org. Zložka
83106 Bratislava
T +421 2 33014511
info@wilo.sk

Slovenia

WILO Adriatic d.o.o.
1000 Ljubljana
T +386 1 5838130
wilo.adriatic@wilo.si

South Africa

Wilo Pumps SA Pty LTD
Sandton
T +27 11 6082780
gavin.bruggen wilo.co.za

Spain

WILO Ibérica S.A.
28806 Alcalá de Henares
(Madrid)
T +34 91 8797100
wilo.iberica@wilo.es

Sweden

WILO NORDIC
Isbjörnsvägen 6
SE-352 45 Växjö
T +46 470 72 76 00
wilo@wilo.se

Switzerland

Wilo Schweiz AG
4310 Rheinfelden
T +41 61 836 80 20
info@wilo.ch

Taiwan

WILO Taiwan CO., Ltd.
24159 New Taipei City
T +886 2 2999 8676
nelson.wu@wilo.com.tw

Turkey

WILO Pompa Sistemleri
San. ve Tic. A.Ş.
34956 İstanbul
T +90 216 2509400
wilo@wilo.com.tr

Ukraine

WILO Ukraine t.o.w.
08130 Kiev
T +38 044 3937384
wilo@wilo.ua

United Arab Emirates

WILO Middle East FZE
Jebel Ali Free zone – South
PO Box 262720 Dubai
T +971 4 880 91 77
info@wilo.ae

USA

WILO USA LLC
Rosemont, IL 60018
T +1 866 945 6872
info@wilo-usa.com

Vietnam

WILO Vietnam Co Ltd.
Ho Chi Minh City, Vietnam
T +84 8 38109975
nkminh@wilo.vn

wilo

Pioneering for You

WILO SE
Nortkirchenstr. 100
44263 Dortmund
Germany
T +49 (0)231 4102-0
T +49 (0)231 4102-7363
wilo@wilo.com
www.wilo.com