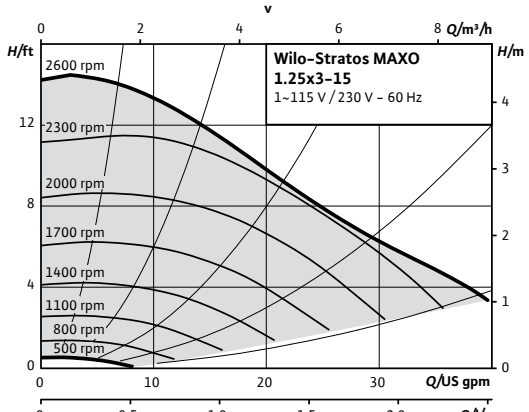


Wilo-Stratos MAXO

		Project:					
		Engineer:					
		Contractor:					
		Submitted By:			Date:		
		Approved By:			Date:		
Tag #	Model #	Flow	Head	Control Mode	Cycle	Phase	Voltage
	Maxo 1.25x3-15				60Hz	1~	115/230-240V



Product Info

Brand	Wilo
Product Description	Stratos MAXO 1.25x3-15
Article Number	2164606
Net Weight (approx.)	16 lbs

Materials

Pump Housing	EN-GJL-250
Impeller	PPS-GF40
Shaft	X39CrMo17-1
Bearing	Carbon-graphite

Hydraulic Data

Max Operating Pressure PN	145 PSI
Min. Suction Head (122°F)	4.3 PSI
Min. Suction Head (203°F)	14.2 PSI
Min. Suction Head (230°F)	22.8 PSI
Min. Fluid Temp.	14°F
Max Fluid Temp.	230°F
Min. Ambient Temp	14°F
Max. Ambient Temp	104°F

Motor Data

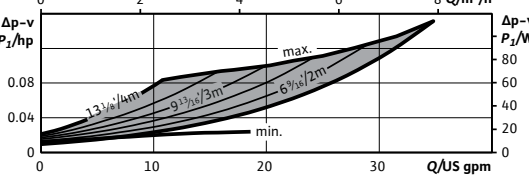
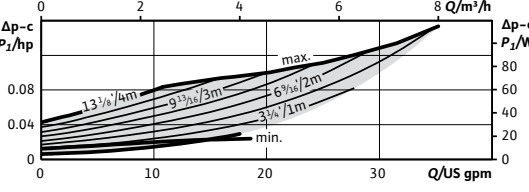
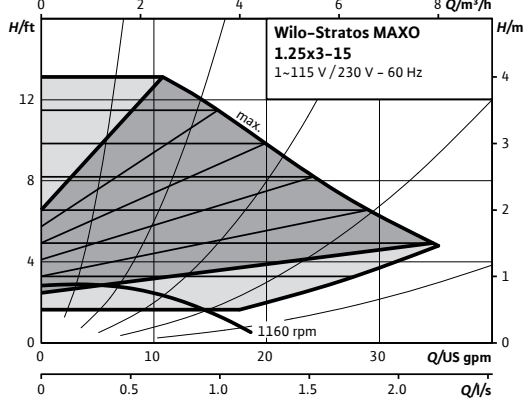
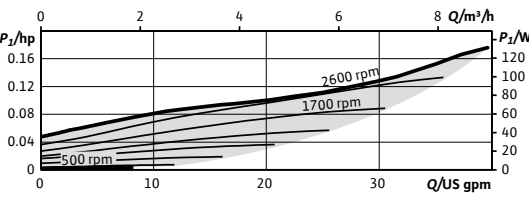
Mains Connection	1-115V ±10%, 50/60Hz 1-230-240V ±10%, 50/60Hz
Motor Type	ECM
Rated Power P ₂	0.125 hp
Min. Speed n _{min}	500 RPM
Max. Speed n _{max}	2600 RPM
Power Consumption P _{3,max}	0.174 hp
Power Consumption P _{1,min}	0.009 hp
Max Current (1-230V) I _{max}	0.59 A
Min Current (1-230V) I _{min}	0.11 A
Max Current (1-115V) I _{max}	1.16 A
Min Current (1-115V) I _{min}	0.11 A
Insulation Class	F
Protection Class	Enclosure 2

CIF Module Selection

- BACnet MS/TP
- Modbus RTU
- CANopen
- LON TP/FT-10
- PLR

Accessory Selection

- Immersion Temp. Sensor Pt 1000 AA
- Immersion Sleeve G ½", 45mm
- Pipe Surface Contact Sensor PT 1000 B
- Immersion Sleeve G ½", 100mm

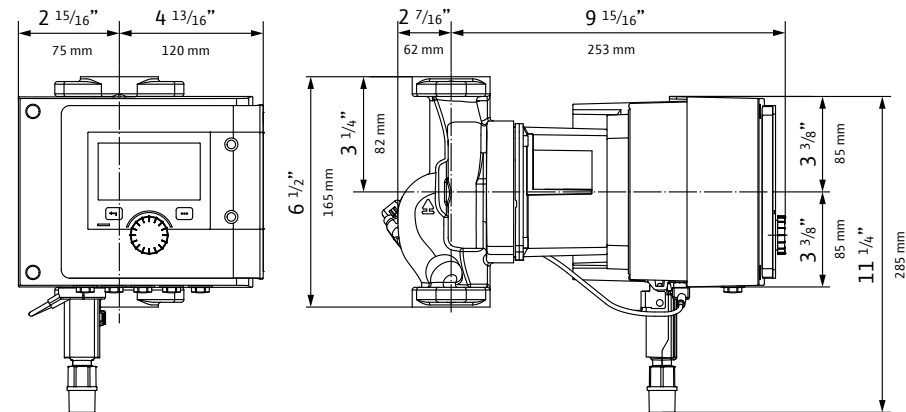
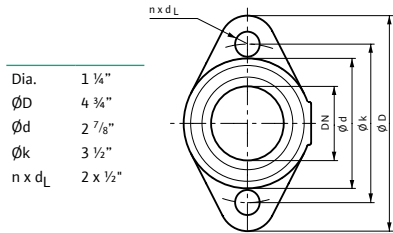


Electrical Inputs

Analog Inputs (2x)	0-10V / 0-20mA / 4-20mA / PT 1000 Passive/Active +24V DC
Digital Inputs (2x)	Ext Off / Ext Min / Ext Max / Ext. MANUAL (BMS off) / External Key Lock / Switch heating, cooling Multi-Pump Communication
Wilo NET	
SSM	Fault Signal
SBM	Run Signal

Installation Dimensions

Pipe Connection (discharge)	1 ¼"
Pipe Connection (suction)	1 ¼"
Flange to Flange	6 ½"



WILO USA LLC
+1 262 204-6600
www.wilo-usa.com
info.us@wilo.com

WILO Canada Inc.
+1 403 276-9456
www.wilo-canada.com
info@wilo-canada.com

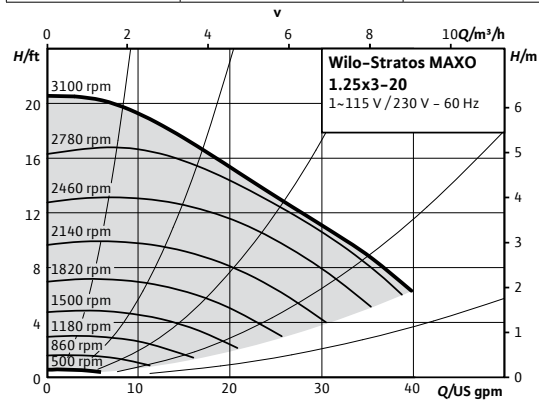
WILO Mexico
+52 442 167 00 32
www.wilo-mexico.com
info@wilo.com.mx

Wilo-Stratos MAXO



Project:	
Engineer:	
Contractor:	
Submitted By:	Date:
Approved By:	Date:

Tag #	Model #	Flow	Head	Control Mode	Cycle	Phase	Voltage
	Maxo 1.25x3-20				60Hz	1~	115/230-240V



Product Info

Brand	Wilo
Product Description	Stratos MAXO 1.25x3-20
Article Number	2164607
Net Weight (approx.)	16 lbs

Materials

Pump Housing	EN-GJL-250
Impeller	PPS-GF40
Shaft	X39CrMo17-1
Bearing	Carbon-graphite

Hydraulic Data

Max Operating Pressure PN	145 PSI
Min. Suction Head (122°F)	4.3 PSI
Min. Suction Head (203°F)	14.2 PSI
Min. Suction Head (230°F)	22.8 PSI
Min. Fluid Temp.	14°F
Max Fluid Temp.	230°F
Min. Ambient Temp	14°F
Max. Ambient Temp	104°F

Motor Data

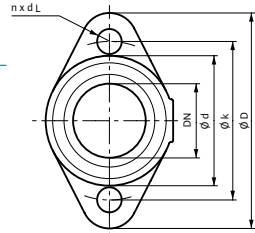
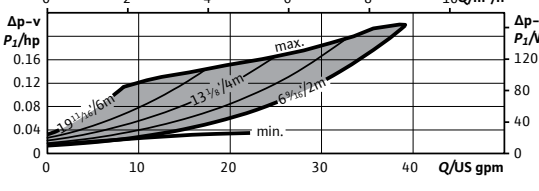
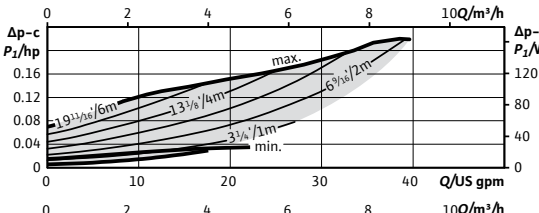
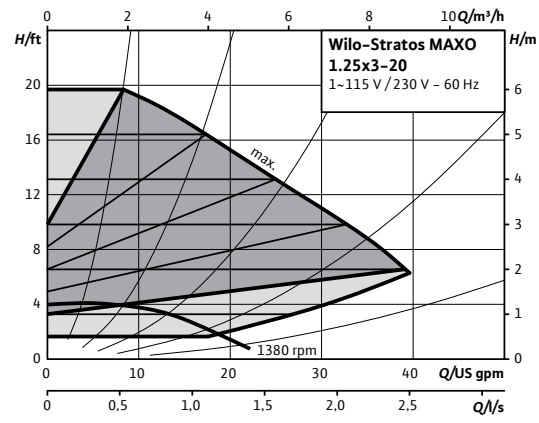
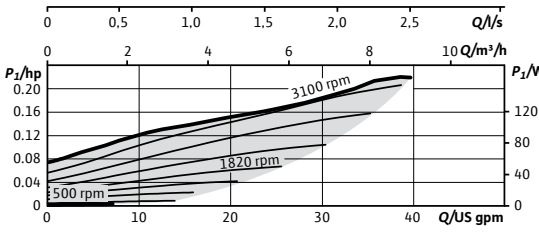
Mains Connection	1~115V ±10%, 50/60Hz 1~230-240V ±10%, 50/60Hz
Motor Type	ECM
Rated Power P ₂	0.169 hp
Min. Speed n _{min}	500 RPM
Max. Speed n _{max}	3100 RPM
Power Consumption P _{3,max}	0.223 hp
Power Consumption P _{1,min}	0.009 hp
Max Current (1~230V) I _{max}	0.71 A
Min Current (1~230V) I _{min}	0.11 A
Max Current (1~115V) I _{max}	1.43 A
Min Current (1~115V) I _{min}	0.11 A
Insulation Class	F
Protection Class	Enclosure 2

CIF Module Selection

BACnet MS/TP	
Modbus RTU	
CANopen	
LON TP/FT-10	
PLR	

Accessory Selection

Immersion Temp. Sensor PT 1000 AA	
Immersion Sleeve G ½", 45mm	
Pipe Surface Contact Sensor PT 1000 B	
Immersion Sleeve G ½", 100mm	

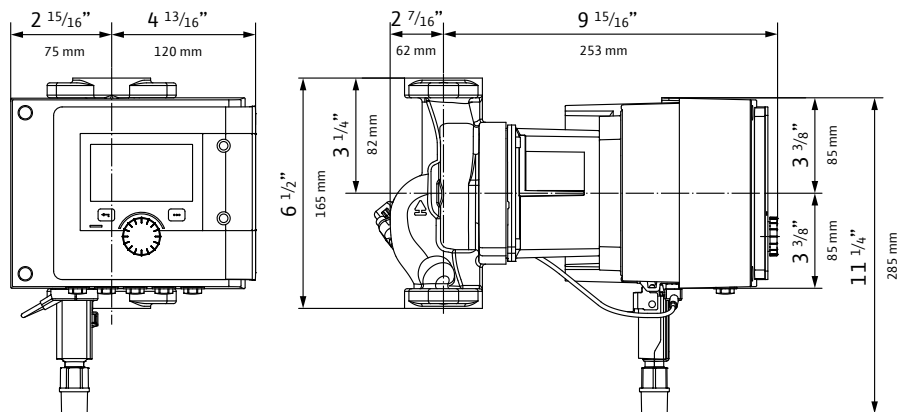


Electrical Inputs

Analog Inputs (2x)	0-10V / 0-20mA / 4-20mA / PT 1000 Passive/Active +24V DC
Digital Inputs (2x)	Ext Off / Ext Min / Ext Max / Ext. MANUAL (BMS off) / External Key Lock / Switch heating, cooling Multi-Pump Communication
Wilo NET	
SSM	Fault Signal
SBM	Run Signal

Installation Dimensions

Pipe Connection (discharge)	1 ¼"
Pipe Connection (suction)	1 ¼"
Flange to Flange	6 ½"



WILO USA LLC
+1 262 204-6600
www.wilo-usa.com
info.us@wilo.com

WILO Canada Inc.
+1 403 276-9456
www.wilo-canada.com
info@wilo-canada.com

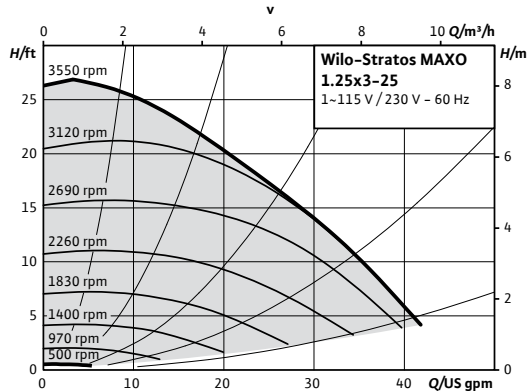
WILO Mexico
+52 442 167 00 32
www.wilo-mexico.com
info@wilo.com.mx

Wilo-Stratos MAXO



Project:	
Engineer:	
Contractor:	
Submitted By:	Date:
Approved By:	Date:

Tag #	Model #	Flow	Head	Control Mode	Cycle	Phase	Voltage
	Maxo 1.25x3-25				60Hz	1~	115/230-240V



Product Info

Brand	Wilo
Product Description	Stratos MAXO 1.25x3-25
Article Number	2164608
Net Weight (approx.)	16 lbs

Materials

Pump Housing	EN-GJL-250
Impeller	PPS-GF40
Shaft	X39CrMo17-1
Bearing	Carbon-graphite

Hydraulic Data

Max Operating Pressure PN	145 PSI
Min. Suction Head (122°F)	4.3 PSI
Min. Suction Head (203°F)	14.2 PSI
Min. Suction Head (230°F)	22.8 PSI
Min. Fluid Temp.	14°F
Max Fluid Temp.	230°F
Min. Ambient Temp	14°F
Max. Ambient Temp	104°F

Motor Data

Mains Connection	1-115V ±10%, 50/60Hz 1-230-240V ±10%, 50/60Hz
Motor Type	ECM
Rated Power P ₂	0.178 hp
Min. Speed n _{min}	500 RPM
Max. Speed n _{max}	3550 RPM
Power Consumption P _{3,max}	0.233 hp
Power Consumption P _{3,min}	0.009 hp
Max Current (1-230V) I _{max}	0.76 A
Min Current (1-230V) I _{min}	0.11 A
Max Current (1-115V) I _{max}	1.53 A
Min Current (1-115V) I _{min}	0.11 A
Insulation Class	F
Protection Class	Enclosure 2

CIF Module Selection

- BACnet MS/TP
- Modbus RTU
- CANopen
- LON TP/FT-10
- PLR

Accessory Selection

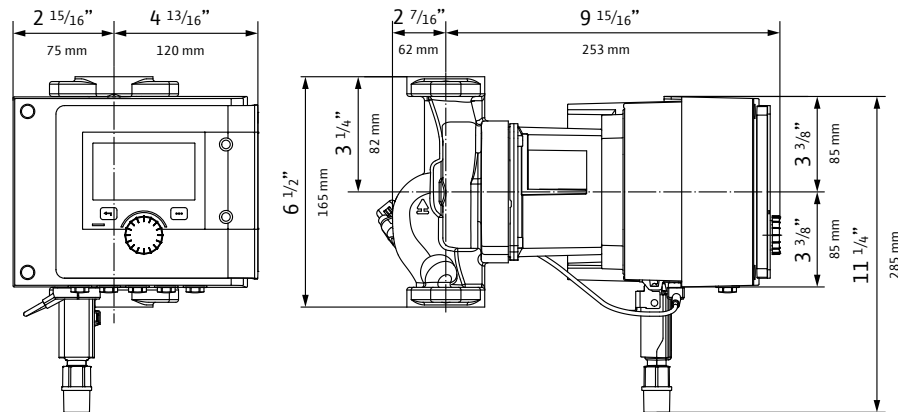
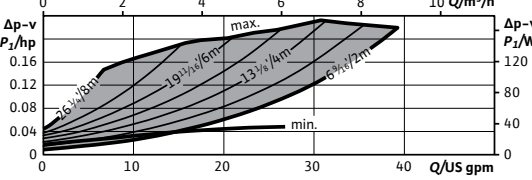
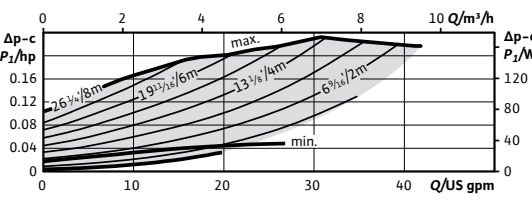
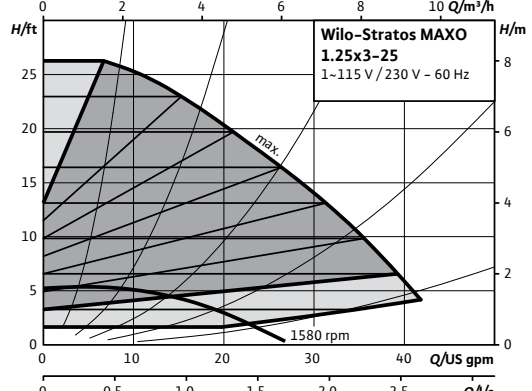
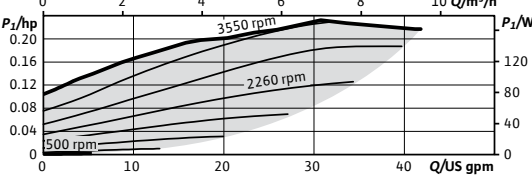
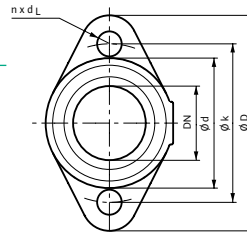
- Immersion Temp. Sensor PT 1000 AA
- Immersion Sleeve G ½", 45mm
- Pipe Surface Contact Sensor PT 1000 B
- Immersion Sleeve G ½", 100mm

Electrical Inputs

Analog Inputs (2x)	0-10V / 0-20mA / 4-20mA / PT 1000 Passive/Active +24V DC
Digital Inputs (2x)	Ext Off / Ext Min / Ext Max / Ext. MANUAL (BMS off) / External Key Lock / Switch heating, cooling
Wilo NET	Multi-Pump Communication
SSM	Fault Signal
SBM	Run Signal

Installation Dimensions

Pipe Connection (discharge)	1 ¼"
Pipe Connection (suction)	1 ¼"
Flange to Flange	6 ½"



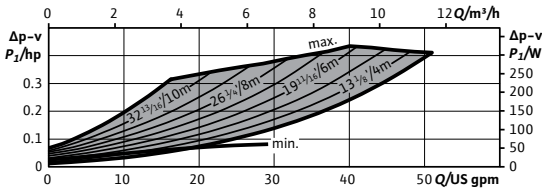
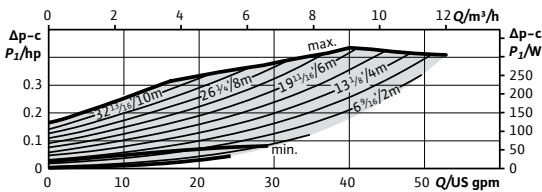
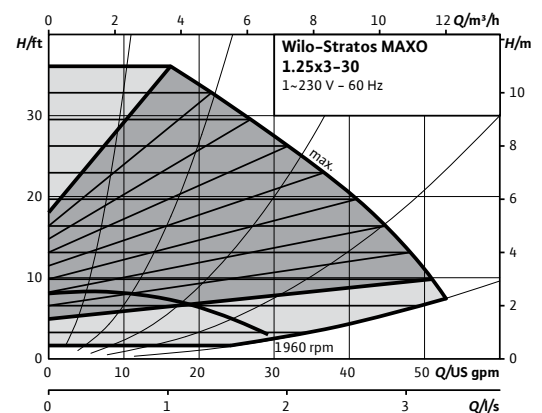
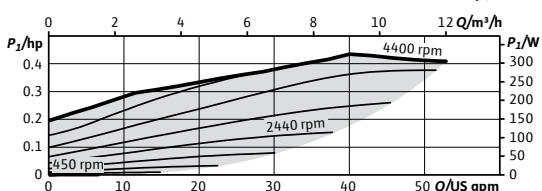
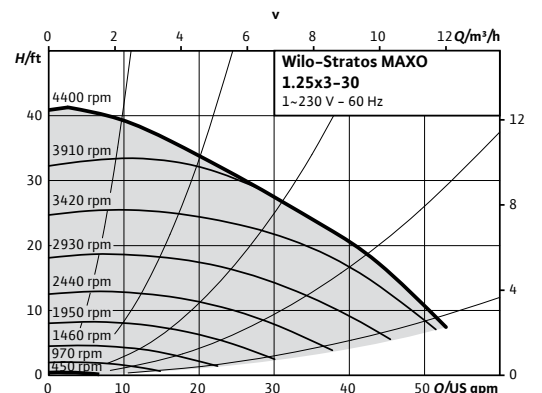
WILO USA LLC
+1 262 204-6600
www.wilo-usa.com
info.us@wilo.com

WILO Canada Inc.
+1 403 276-9456
www.wilo-canada.com
info@wilo-canada.com

WILO Mexico
+52 442 167 00 32
www.wilo-mexico.com
info@wilo.com.mx

Wilo-Stratos MAXO

		Project:					
		Engineer:					
		Contractor:					
		Submitted By:			Date:		
		Approved By:			Date:		
Tag #	Model #	Flow	Head	Control Mode	Cycle	Phase	Voltage
	Maxo 1.25x3-30				60Hz	1~	230-240V



Product Info

Brand	Wilo
Product Description	Stratos MAXO 1.25x3-30
Article Number	2164609
Net Weight (approx.)	17 lbs

Hydraulic Data

Max Operating Pressure PN	145 PSI
Min. Suction Head (122°F)	4.3 PSI
Min. Suction Head (203°F)	14.2 PSI
Min. Suction Head (230°F)	22.8 PSI
Min. Fluid Temp.	14°F
Max Fluid Temp.	230°F
Min. Ambient Temp	14°F
Max. Ambient Temp	104°F

CIF Module Selection

BACnet MS/TP
Modbus RTU
CANopen
LON TP/FT-10
PLR

Accessory Selection

Immersion Temp. Sensor Pt 1000 AA
Immersion Sleeve G 1/2", 45mm
Pipe Surface Contact Sensor PT 1000 B
Immersion Sleeve G 1/2", 100mm

Materials

Pump Housing	EN-GJL-250
Impeller	PPS-GF40
Shaft	1.4122
Bearing	Carbon, antimony-impregnated

Motor Data

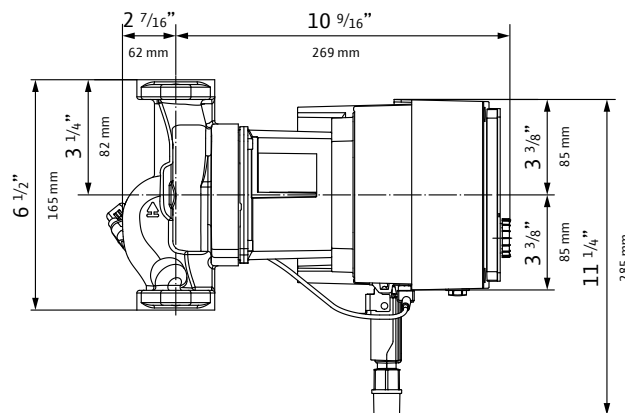
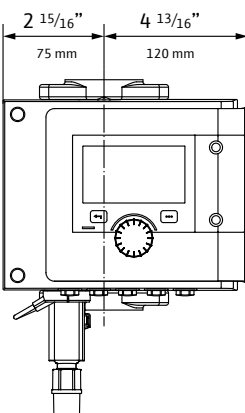
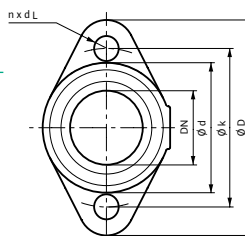
Mains Connection	1-230-240 V ±10%, 50/60Hz
Motor Type	ECM
Rated Power P ₂	0.363 hp
Min. Speed n _{min}	450 RPM
Max. Speed n _{max}	4400 RPM
Power Consumption P _{1,max}	0.437 hp
Power Consumption P _{1,min}	0.009 hp
Max Current (1-230V) I _{max}	1.44 A
Min Current (1-230V) I _{min}	0.11 A
Insulation Class	F
Protection Class	Enclosure 2

Electrical Inputs

Analog Inputs (2x)	0-10V / 0-20mA / 4-20mA / PT 1000 Passive/Active +24V DC
Digital Inputs (2x)	Ext Off / Ext Min / Ext Max / Ext. MANUAL (BMS off) / External Key Lock / Switch heating, cooling
Wilo NET	Multi-Pump Communication
SSM	Fault Signal
SBM	Run Signal

Installation Dimensions

Pipe Connection (discharge)	1 1/4"
Pipe Connection (suction)	1 1/4"
Flange to Flange	6 1/2"



WILO USA LLC
+1 262 204-6600
www.wilo-usa.com
info.us@wilo.com

WILO Canada Inc.
+1 403 276-9456
www.wilo-canada.com
info@wilo-canada.com

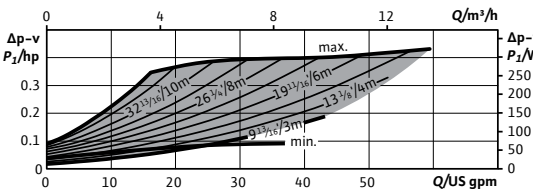
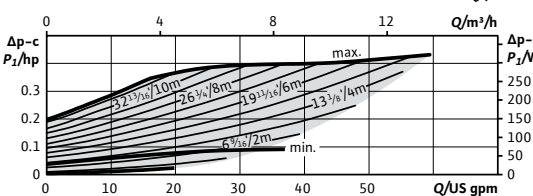
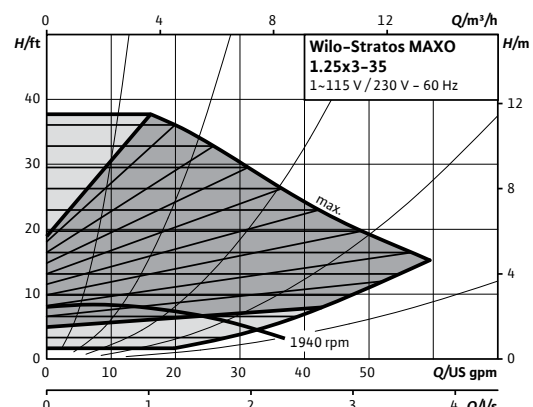
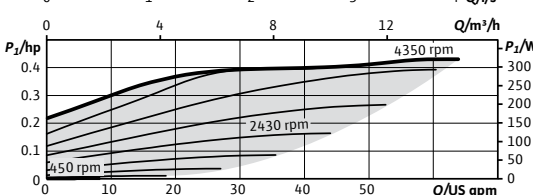
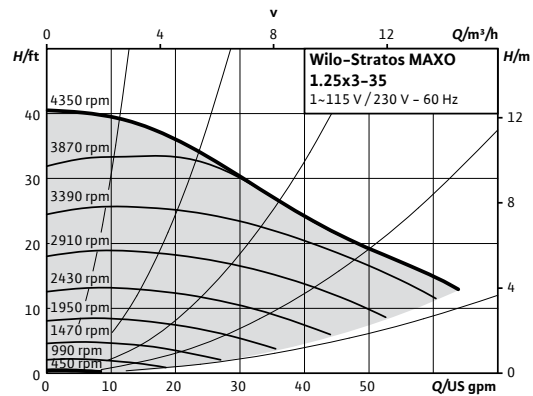
WILO Mexico
+52 442 167 00 32
www.wilo-mexico.com
info@wilo.com.mx

Wilo-Stratos MAXO



Project:	
Engineer:	
Contractor:	
Submitted By:	Date:
Approved By:	Date:

Tag #	Model #	Flow	Head	Control Mode	Cycle	Phase	Voltage
	Maxo 1.25x3-35				60Hz	1~	115/230-240V



Product Info

Brand	Wilo
Product Description	Stratos MAXO 1.25x3-35
Article Number	2164610
Net Weight (approx.)	34 lbs

Hydraulic Data

Max Operating Pressure PN	145 PSI
Min. Suction Head (122°F)	4.3 PSI
Min. Suction Head (203°F)	14.2 PSI
Min. Suction Head (230°F)	22.8 PSI
Min. Fluid Temp.	14°F
Max Fluid Temp.	230°F
Min. Ambient Temp	14°F
Max. Ambient Temp	104°F

CIF Module Selection

- BACnet MS/TP
- Modbus RTU
- CANopen
- LON TP/FT-10
- PLR

Accessory Selection

- Immersion Temp. Sensor Pt 1000 AA
- Immersion Sleeve G 1/2", 45mm
- Pipe Surface Contact Sensor PT 1000 B
- Immersion Sleeve G 1/2", 100mm

Materials

Pump Housing	EN-GJL-250
Impeller	PPS-GF40
Shaft	X30Cr13
Bearing	Carbon, antimony-impregnated

Motor Data

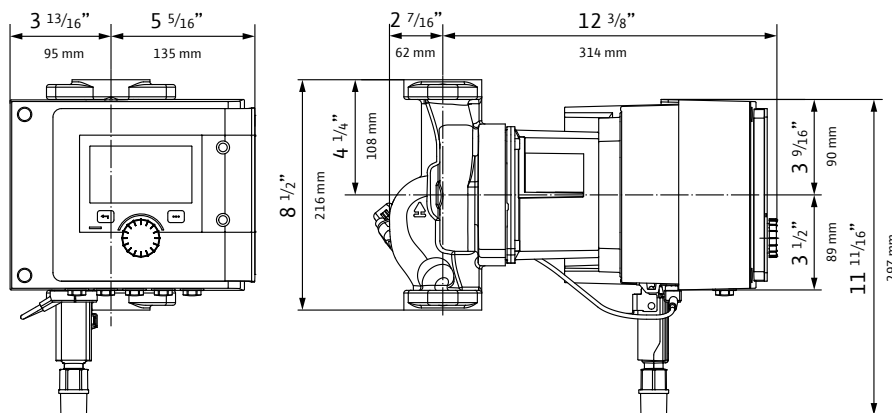
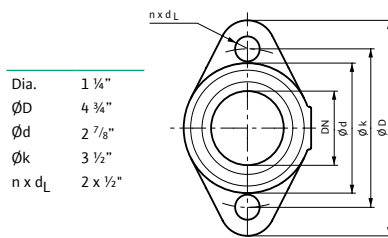
Mains Connection	1-115V ±10%, 50/60Hz 1-230-240V ±10%, 50/60Hz
Motor Type	ECM
Rated Power P ₂	0.354 hp
Min. Speed n _{min}	450 RPM
Max. Speed n _{max}	4350 RPM
Power Consumption P _{3,max}	0.433 hp
Power Consumption P _{1,min}	0.013 hp
Max Current (1-230V) I _{max}	1.38 A
Min Current (1-230V) I _{min}	0.15 A
Max Current (1-115V) I _{max}	2.83 A
Min Current (1-115V) I _{min}	0.15 A
Insulation Class	F
Protection Class	Enclosure 2

Electrical Inputs

Analog Inputs (2x)	0-10V / 0-20mA / 4-20mA / PT 1000 Passive/Active +24V DC
Digital Inputs (2x)	Ext Off / Ext Min / Ext Max / Ext. MANUAL (BMS off) / External Key Lock / Switch heating, cooling
Wilo NET	Multi-Pump Communication
SSM	Fault Signal
SBM	Run Signal

Installation Dimensions

Pipe Connection (discharge)	1 1/4"
Pipe Connection (suction)	1 1/4"
Flange to Flange	8 1/2"



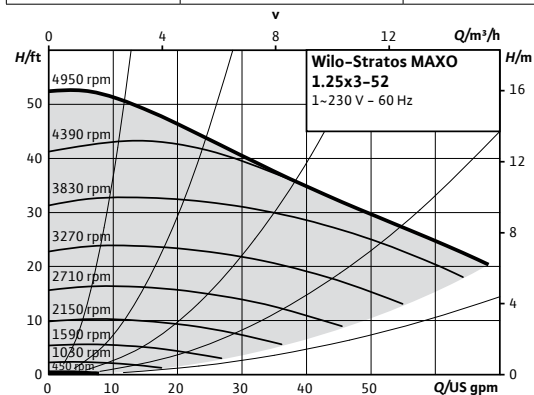
WILO USA LLC
+1 262 204-6600
www.wilo-usa.com
info.us@wilo.com

WILO Canada Inc.
+1 403 276-9456
www.wilo-canada.com
info@wilo-canada.com

WILO Mexico
+52 442 167 00 32
www.wilo-mexico.com
info@wilo.com.mx

Wilo-Stratos MAXO

		Project:					
		Engineer:					
		Contractor:					
		Submitted By:			Date:		
		Approved By:			Date:		
Tag #	Model #	Flow	Head	Control Mode	Cycle	Phase	Voltage
	Maxo 1.25x3-52				60Hz	1~	230-240V



Product Info

Brand	Wilo
Product Description	Stratos MAXO 1.25x3-52
Article Number	2164611
Net Weight (approx.)	34 lbs

Materials

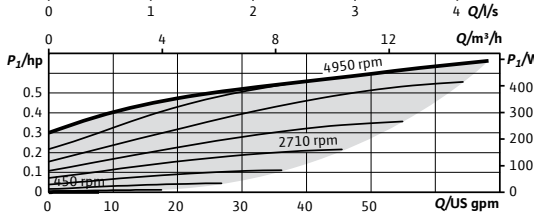
Pump Housing	EN-GJL-250
Impeller	PPS-GF40
Shaft	X30Cr13
Bearing	Carbon, antimony-impregnated

Hydraulic Data

Max Operating Pressure PN	145 PSI
Min. Suction Head (122°F)	7.1 PSI
Min. Suction Head (203°F)	17.1 PSI
Min. Suction Head (230°F)	25.6 PSI
Min. Fluid Temp.	14°F
Max Fluid Temp.	230°F
Min. Ambient Temp	14°F
Max. Ambient Temp	104°F

Motor Data

Mains Connection	1-230-240 V ±10%, 50/60Hz
Motor Type	ECM
Rated Power P ₂	0.582 hp
Min. Speed n _{min}	450 RPM
Max. Speed n _{max}	4950 RPM
Power Consumption P _{1,max}	0.664 hp
Power Consumption P _{1,min}	0.013 hp
Max Current (1-230V) I _{max}	2.21 A
Min Current (1-230V) I _{min}	0.2 A
Insulation Class	F
Protection Class	Enclosure 2



CIF Module Selection

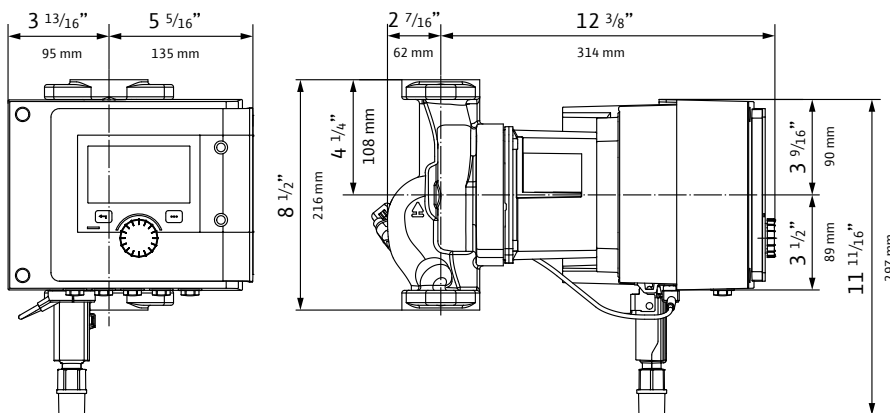
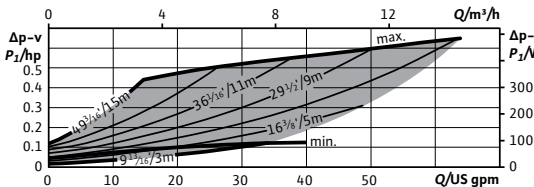
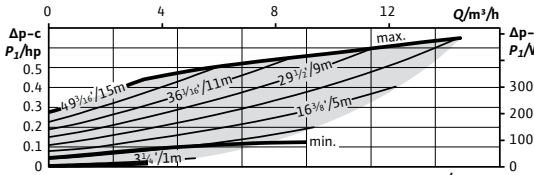
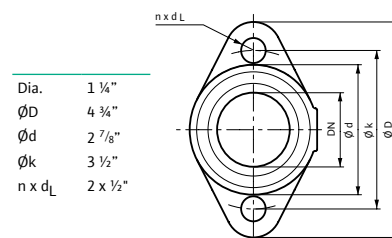
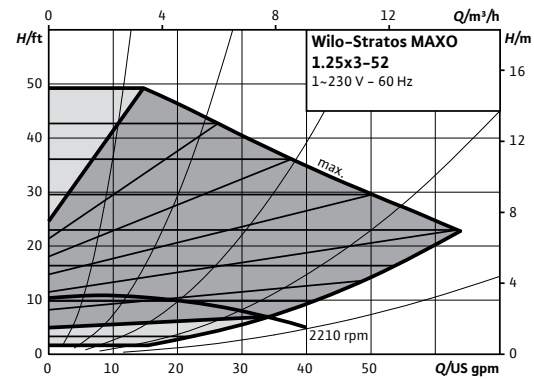
- BACnet MS/TP
- Modbus RTU
- CANopen
- LON TP/FT-10
- PLR

Electrical Inputs

Analog Inputs (2x)	0-10V / 0-20mA / 4-20mA / PT 1000 Passive/Active +24V DC
Digital Inputs (2x)	Ext Off / Ext Min / Ext Max / Ext. MANUAL (BMS off) / External Key Lock / Switch heating, cooling
Wilo NET	Multi-Pump Communication
SSM	Fault Signal
SBM	Run Signal

Accessory Selection

- Immersion Temp. Sensor Pt 1000 AA
- Immersion Sleeve G ½", 45mm
- Pipe Surface Contact Sensor PT 1000 B
- Immersion Sleeve G ½", 100mm



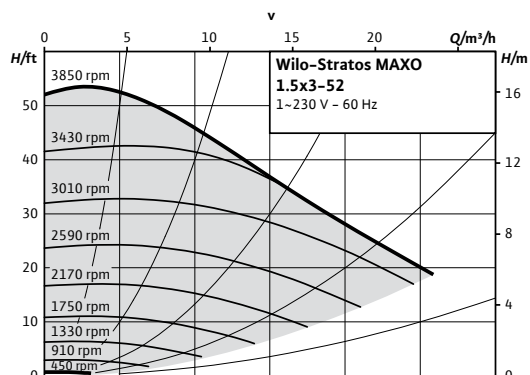
WILO USA LLC
+1 262 204-6600
www.wilo-usa.com
info.us@wilo.com

WILO Canada Inc.
+1 403 276-9456
www.wilo-canada.com
info@wilo-canada.com

WILO Mexico
+52 442 167 00 32
www.wilo-mexico.com
info@wilo.com.mx

Wilo-Stratos MAXO

		Project:					
		Engineer:					
		Contractor:					
		Submitted By:			Date:		
		Approved By:			Date:		
Tag #	Model #	Flow	Head	Control Mode	Cycle	Phase	Voltage
	Maxo 1.5x3-52				60Hz	1~	230-240V



Product Info

Brand	Wilo
Product Description	Stratos MAXO 1.5x3-52
Article Number	2164612
Net Weight (approx.)	36 lbs

Materials

Pump Housing	EN-GJL-250
Impeller	PPS-GF40
Shaft	X30Cr13
Bearing	Carbon, antimony-impregnated

Hydraulic Data

Max Operating Pressure PN	145 PSI
Min. Suction Head (122°F)	7.1 PSI
Min. Suction Head (203°F)	17.1 PSI
Min. Suction Head (230°F)	25.6 PSI
Min. Fluid Temp.	14°F
Max Fluid Temp.	230°F
Min. Ambient Temp	14°F
Max. Ambient Temp	104°F

Motor Data

Mains Connection	1~230-240 V ±10%, 50/60Hz
Motor Type	ECM
Rated Power P ₂	0.763 hp
Min. Speed n _{min}	450 RPM
Max. Speed n _{max}	3850 RPM
Power Consumption P _{1,max}	0.860 hp
Power Consumption P _{1,min}	0.013 hp
Max Current (1~230V) I _{max}	2.82 A
Min Current (1~230V) I _{min}	0.2 A
Insulation Class	F
Protection Class	Enclosure 2

CIF Module Selection

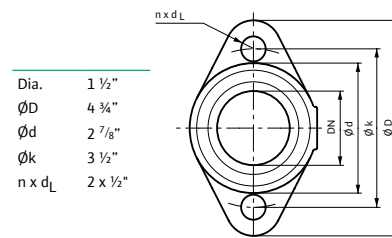
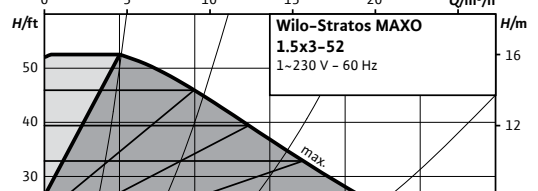
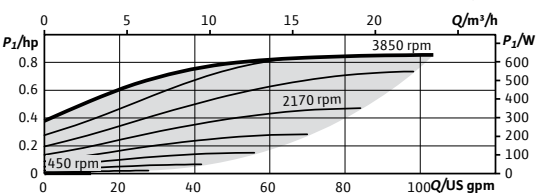
- BACnet MS/TP
- Modbus RTU
- CANopen
- LON TP/FT-10
- PLR

Accessory Selection

- Immersion Temp. Sensor Pt 1000 AA
- Immersion Sleeve G ½", 45mm
- Pipe Surface Contact Sensor PT 1000 B
- Immersion Sleeve G ½", 100mm

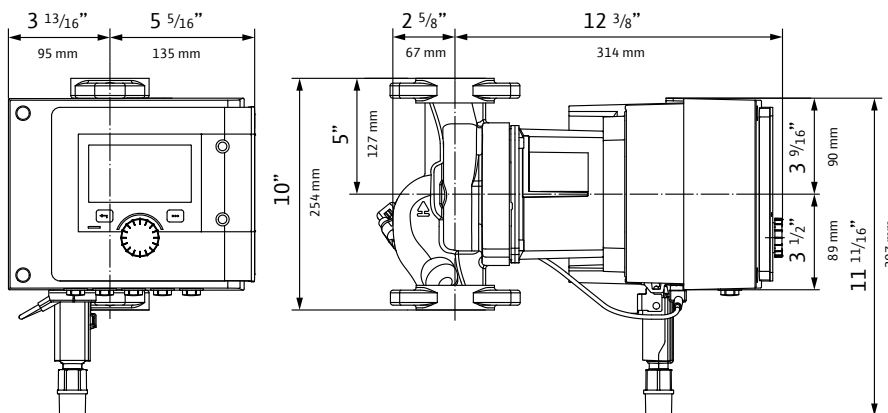
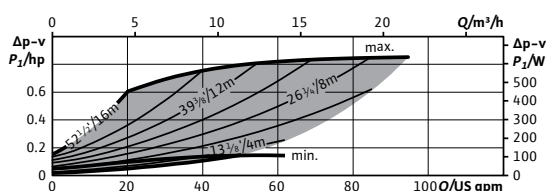
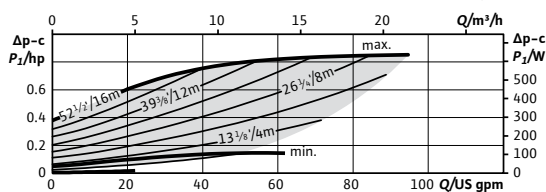
Electrical Inputs

Analog Inputs (2x)	0-10V / 0-20mA / 4-20mA / PT 1000 Passive/Active +24V DC
Digital Inputs (2x)	Ext Off / Ext Min / Ext Max / Ext. MANUAL (BMS off) / External Key Lock / Switch heating, cooling
Wilo NET	Multi-Pump Communication
SSM	Fault Signal
SBM	Run Signal



Installation Dimensions

Pipe Connection (discharge)	1 ½"
Pipe Connection (suction)	1 ½"
Flange to Flange	10"



WILO USA LLC
+1 262 204-6600
www.wilo-usa.com
info.us@wilo.com

WILO Canada Inc.
+1 403 276-9456
www.wilo-canada.com
info@wilo-canada.com

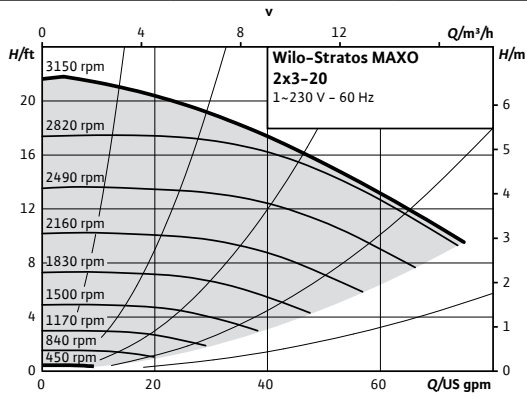
WILO Mexico
+52 442 167 00 32
www.wilo-mexico.com
info@wilo.com.mx

Wilo-Stratos MAXO



Project:	
Engineer:	
Contractor:	
Submitted By:	Date:
Approved By:	Date:

Tag #	Model #	Flow	Head	Control Mode	Cycle	Phase	Voltage
	Maxo 2x3-20				60Hz	1~	230-240V



Product Info

Brand	Wilo
Product Description	Stratos MAXO 2x3-20
Article Number	2164613
Net Weight (approx.)	30 lbs

Materials

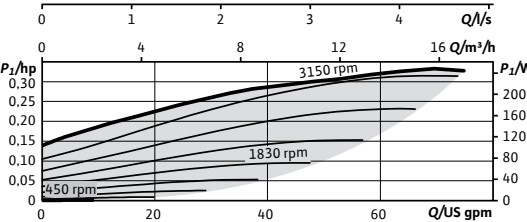
Pump Housing	EN-GJL-250
Impeller	PPS-GF40
Shaft	1.4122
Bearing	Carbon, antimony-impregnated

Hydraulic Data

Max Operating Pressure PN	145 PSI
Min. Suction Head (122°F)	4.3 PSI
Min. Suction Head (203°F)	14.2 PSI
Min. Suction Head (230°F)	22.8 PSI
Min. Fluid Temp.	14°F
Max Fluid Temp.	230°F
Min. Ambient Temp	14°F
Max. Ambient Temp	104°F

Motor Data

Mains Connection	1~230-240 V ±10%, 50/60Hz
Motor Type	ECM
Rated Power P ₂	0.286 hp
Min. Speed n _{min}	450 RPM
Max. Speed n _{max}	3150 RPM
Power Consumption P _{1,max}	0.337 hp
Power Consumption P _{1,min}	0.009 hp
Max Current (1~230V) I _{max}	1.11 A
Min Current (1~230V) I _{min}	0.11 A
Insulation Class	F
Protection Class	Enclosure 2



CIF Module Selection

- BACnet MS/TP
- Modbus RTU
- CANopen
- LON TP/FT-10
- PLR

Accessory Selection

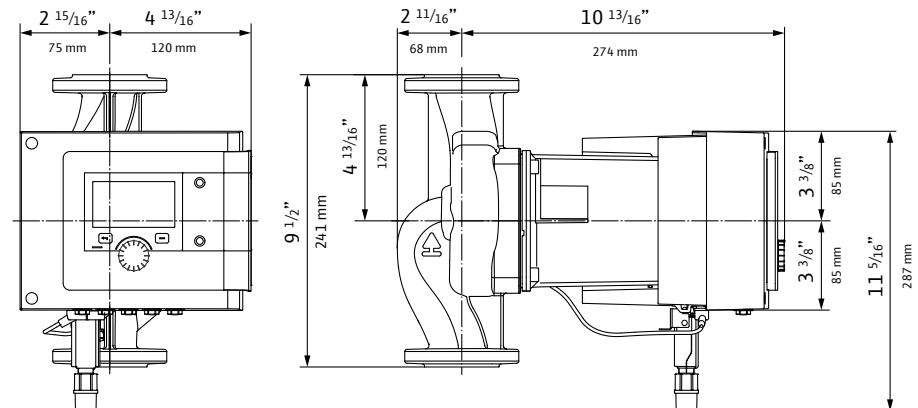
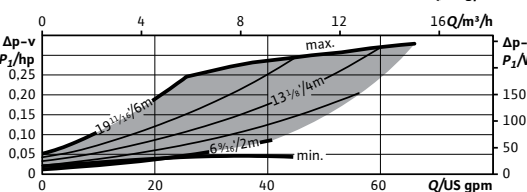
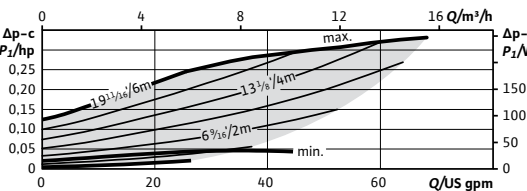
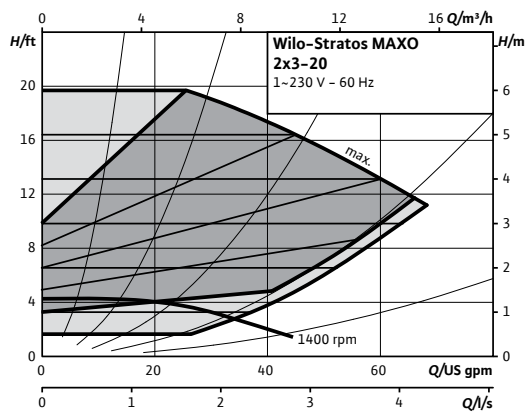
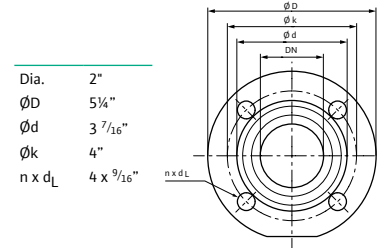
- Immersion Temp. Sensor PT 1000 AA
- Immersion Sleeve G 1/2", 45mm
- Pipe Surface Contact Sensor PT 1000 B
- Immersion Sleeve G 1/2", 100mm

Electrical Inputs

Analog Inputs (2x)	0-10V / 0-20mA / 4-20mA / PT 1000 Passive/Active +24V DC
Digital Inputs (2x)	Ext Off / Ext Min / Ext Max / Ext. MANUAL (BMS off) / External Key Lock / Switch heating, cooling
Wilo NET	Multi-Pump Communication
SSM	Fault Signal
SBM	Run Signal

Installation Dimensions

Pipe Connection (discharge)	2"
Pipe Connection (suction)	2"
Flange to Flange	9 1/2"



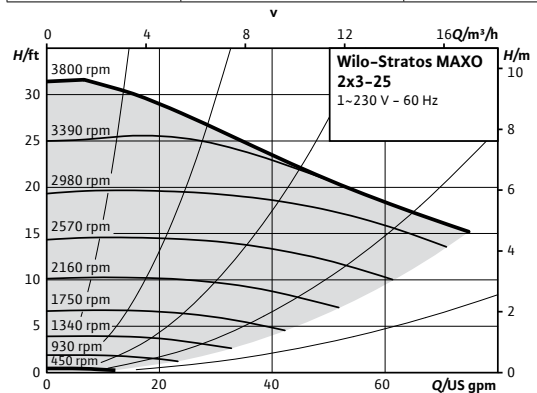
WILO USA LLC
+1 262 204-6600
www.wilo-usa.com
info.us@wilo.com

WILO Canada Inc.
+1 403 276-9456
www.wilo-canada.com
info@wilo-canada.com

WILO Mexico
+52 442 167 00 32
www.wilo-mexico.com
info@wilo.com.mx

Wilo-Stratos MAXO

		Project:					
		Engineer:					
		Contractor:					
		Submitted By:			Date:		
		Approved By:			Date:		
Tag #	Model #	Flow	Head	Control Mode	Cycle	Phase	Voltage
	Maxo 2x3-25				60Hz	1~	230-240V



Product Info

Brand	Wilo
Product Description	Stratos MAXO 2x3-25
Article Number	2164614
Net Weight (approx.)	40 lbs

Materials

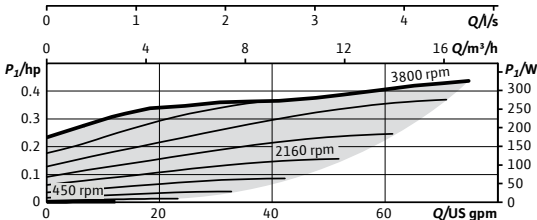
Pump Housing	EN-GJL-250
Impeller	PPS-GF40
Shaft	X30Cr13
Bearing	Carbon, antimony-impregnated

Hydraulic Data

Max Operating Pressure PN	145 PSI
Min. Suction Head (122°F)	7.1 PSI
Min. Suction Head (203°F)	17.1 PSI
Min. Suction Head (230°F)	25.6 PSI
Min. Fluid Temp.	14°F
Max Fluid Temp.	230°F
Min. Ambient Temp	14°F
Max. Ambient Temp	104°F

Motor Data

Mains Connection	1~230-240 V ±10%, 50/60Hz
Motor Type	ECM
Rated Power P ₂	0.38 hp
Min. Speed n _{min}	450 RPM
Max. Speed n _{max}	3800 RPM
Power Consumption P _{1,max}	0.437 hp
Power Consumption P _{1,min}	0.013 hp
Max Current (1~230V) I _{max}	1.44 A
Min Current (1~230V) I _{min}	0.2 A
Insulation Class	F
Protection Class	Enclosure 2



CIF Module Selection

- BACnet MS/TP
- Modbus RTU
- CANopen
- LON TP/FT-10
- PLR

Accessory Selection

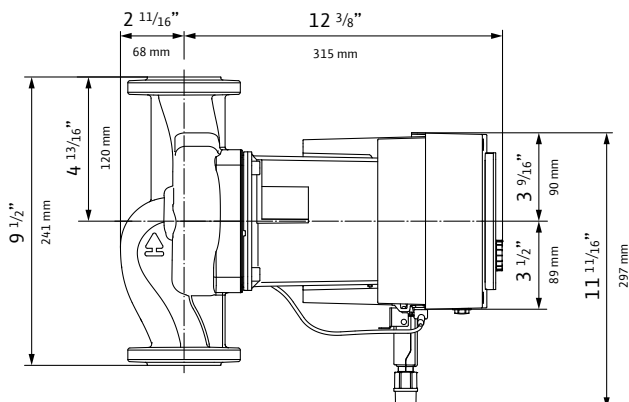
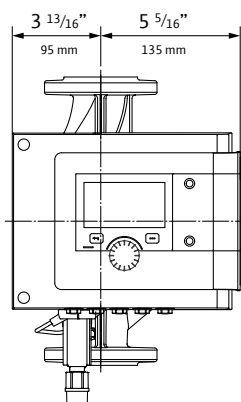
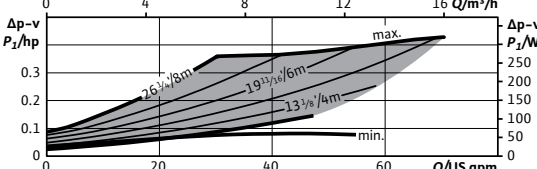
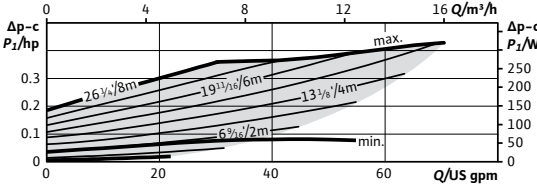
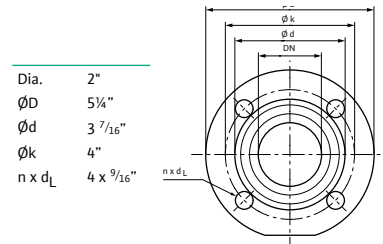
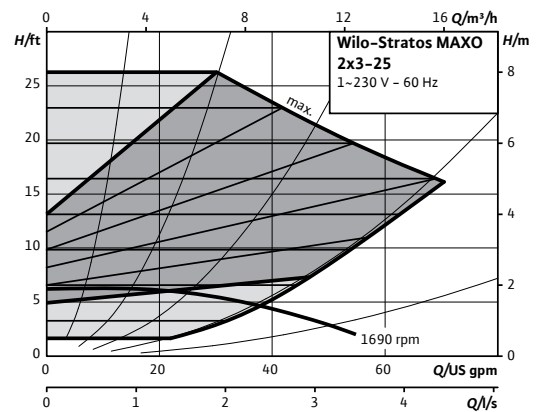
- Immersion Temp. Sensor PT 1000 AA
- Immersion Sleeve G 1/2", 45mm
- Pipe Surface Contact Sensor PT 1000 B
- Immersion Sleeve G 1/2", 100mm

Electrical Inputs

Analog Inputs (2x)	0-10V / 0-20mA / 4-20mA / PT 1000 Passive/Active +24V DC
Digital Inputs (2x)	Ext Off / Ext Min / Ext Max / Ext. MANUAL (BMS off) / External Key Lock / Switch heating, cooling
Wilo NET	Multi-Pump Communication
SSM	Fault Signal
SBM	Run Signal

Installation Dimensions

Pipe Connection (discharge)	2"
Pipe Connection (suction)	2"
Flange to Flange	9 1/2"



WILO USA LLC
+1 262 204-6600
www.wilo-usa.com
info.us@wilo.com

WILO Canada Inc.
+1 403 276-9456
www.wilo-canada.com
info@wilo-canada.com

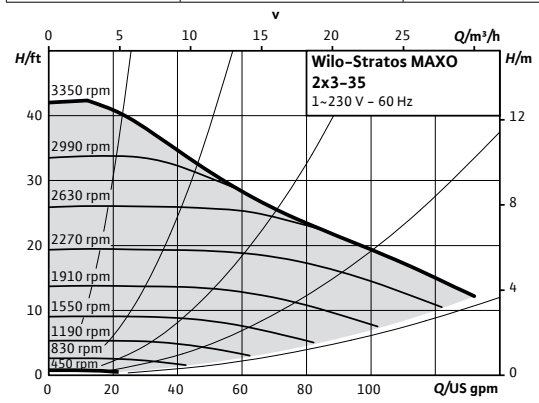
WILO Mexico
+52 442 167 00 32
www.wilo-mexico.com
info@wilo.com.mx

Wilo-Stratos MAXO



Project:	
Engineer:	
Contractor:	
Submitted By:	Date:
Approved By:	Date:

Tag #	Model #	Flow	Head	Control Mode	Cycle	Phase	Voltage
	Maxo 2x3-35				60Hz	1~	230-240V



Product Info

Brand	Wilo
Product Description	Stratos MAXO 2x3-35
Article Number	2164615
Net Weight (approx.)	41 lbs

Materials

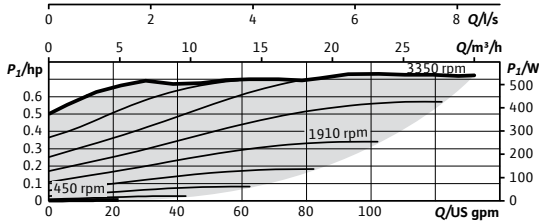
Pump Housing	EN-GJL-250
Impeller	PPS-GF40
Shaft	X30Cr13
Bearing	Carbon, antimony-impregnated

Hydraulic Data

Max Operating Pressure PN	145 PSI
Min. Suction Head (122°F)	7.1 PSI
Min. Suction Head (203°F)	17.1 PSI
Min. Suction Head (230°F)	25.6 PSI
Min. Fluid Temp.	14°F
Max Fluid Temp.	230°F
Min. Ambient Temp	14°F
Max. Ambient Temp	104°F

Motor Data

Mains Connection	1-230-240 V ±10%, 50/60Hz
Motor Type	ECM
Rated Power P ₂	0.652 hp
Min. Speed n _{min}	450 RPM
Max. Speed n _{max}	3550 RPM
Power Consumption P _{1,max}	0.734 hp
Power Consumption P _{1,min}	0.013 hp
Max Current (1-230V) I _{max}	2.39 A
Min Current (1-230V) I _{min}	0.2 A
Insulation Class	F
Protection Class	Enclosure 2



CIF Module Selection

BACnet MS/TP
Modbus RTU
CANopen
LON TP/FT-10
PLR

Accessory Selection

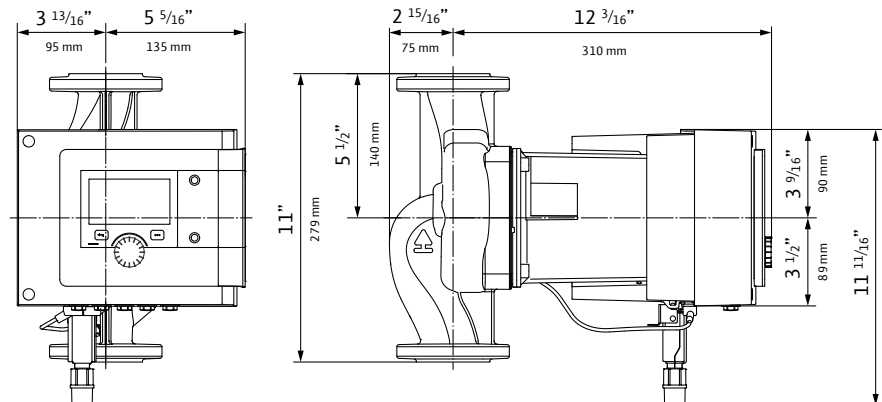
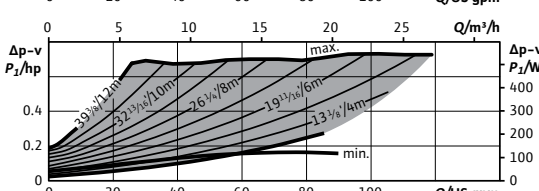
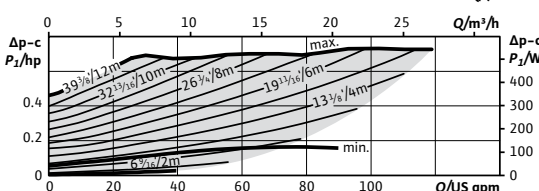
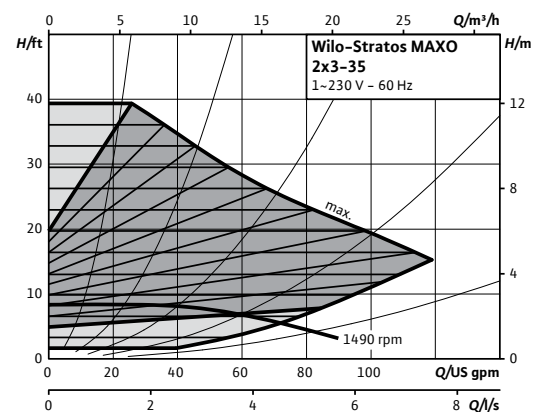
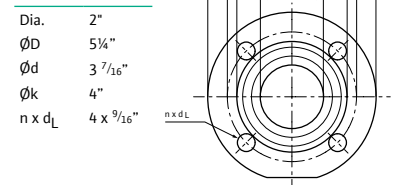
Immersion Temp. Sensor PT 1000 AA
Immersion Sleeve G ½", 45mm
Pipe Surface Contact Sensor PT 1000 B
Immersion Sleeve G ½", 100mm

Electrical Inputs

Analog Inputs (2x)	0-10V / 0-20mA / 4-20mA / PT 1000 Passive/Active +24V DC
Digital Inputs (2x)	Ext Off / Ext Min / Ext Max / Ext. MANUAL (BMS off) / External Key Lock / Switch heating, cooling
Wilo NET	Multi-Pump Communication
SSM	Fault Signal
SBM	Run Signal

Installation Dimensions

Pipe Connection (discharge)	2"
Pipe Connection (suction)	2"
Flange to Flange	11"



WILO USA LLC
+1 262 204-6600
www.wilo-usa.com
info.us@wilo.com

WILO Canada Inc.
+1 403 276-9456
www.wilo-canada.com
info@wilo-canada.com

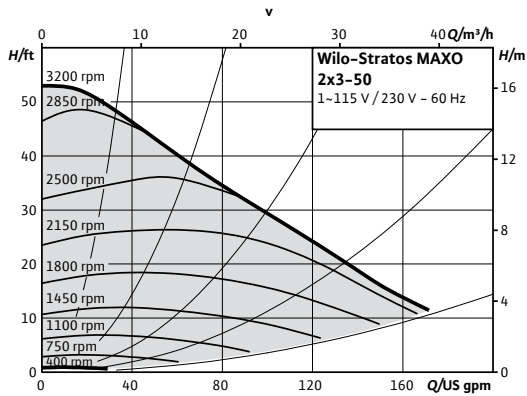
WILO Mexico
+52 442 167 00 32
www.wilo-mexico.com
info@wilo.com.mx

Wilo-Stratos MAXO



Project:	
Engineer:	
Contractor:	
Submitted By:	Date:
Approved By:	Date:

Tag #	Model #	Flow	Head	Control Mode	Cycle	Phase	Voltage
	Maxo 2x3-50				60Hz	1~	115/230-240V



Product Info

Brand	Wilo
Product Description	Stratos MAXO 2x3-50
Article Number	2164616
Net Weight (approx.)	64 lbs

Materials

Pump Housing	EN-GJL-250
Impeller	PPS-GF40
Shaft	X30Cr13
Bearing	Carbon, antimony-impregnated

Hydraulic Data

Max Operating Pressure PN	145 PSI
Min. Suction Head (122°F)	10 PSI
Min. Suction Head (203°F)	21.3 PSI
Min. Suction Head (230°F)	32.7 PSI
Min. Fluid Temp.	14°F
Max Fluid Temp.	230°F
Min. Ambient Temp	14°F
Max. Ambient Temp	104°F

Motor Data

Mains Connection	1-115V ±10%, 50/60Hz 1-230-240V ±10%, 50/60Hz
Motor Type	ECM
Rated Power P ₂	0.933 hp
Min. Speed n _{min}	400 RPM
Max. Speed n _{max}	3200 RPM
Power Consumption P _{3,max}	1.106 hp
Power Consumption P _{1,min}	0.027 hp
Max Current (1-230V) I _{max}	3.49 A
Min Current (1-230V) I _{min}	0.3 A
Max Current (1-115V) I _{max}	7.19 A
Min Current (1-115V) I _{min}	0.25 A
Insulation Class	F
Protection Class	Enclosure 2

CIF Module Selection

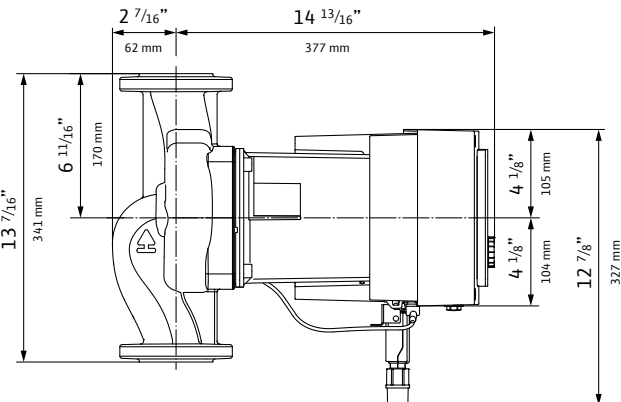
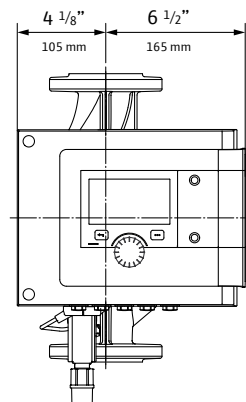
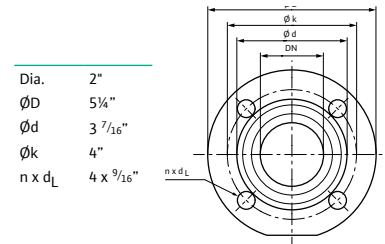
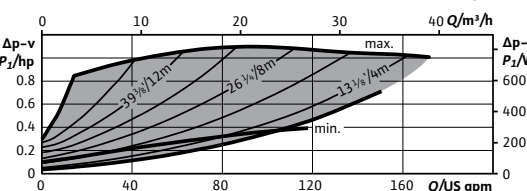
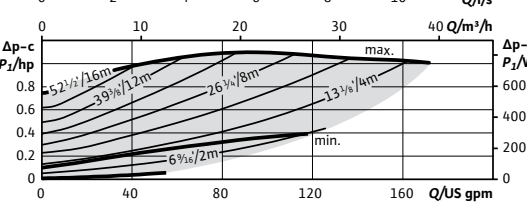
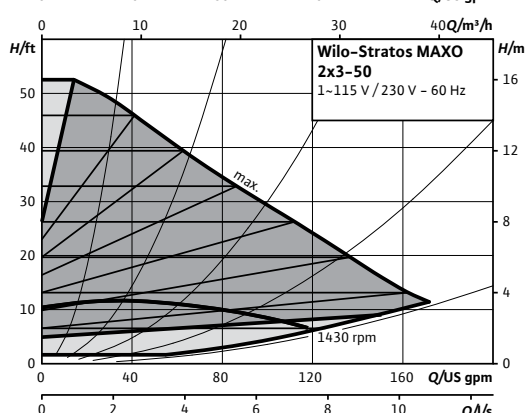
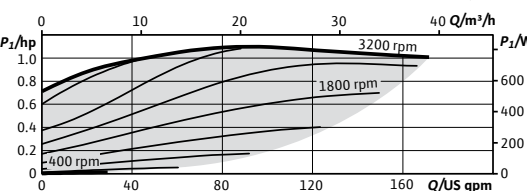
- BACnet MS/TP
- Modbus RTU
- CANopen
- LON TP/FT-10
- PLR

Accessory Selection

- Immersion Temp. Sensor Pt 1000 AA
- Immersion Sleeve G ½", 45mm
- Pipe Surface Contact Sensor PT 1000 B
- Immersion Sleeve G ½", 100mm

Electrical Inputs

Analog Inputs (2x)	0-10V / 0-20mA / 4-20mA / PT 1000 Passive/Active +24V DC
Digital Inputs (2x)	Ext Off / Ext Min / Ext Max / Ext. MANUAL (BMS off) / External Key Lock / Switch heating, cooling
Wilo NET	Multi-Pump Communication
SSM	Fault Signal
SBM	Run Signal



WILO USA LLC
+1 262 204-6600
www.wilo-usa.com
info.us@wilo.com

WILO Canada Inc.
+1 403 276-9456
www.wilo-canada.com
info@wilo-canada.com

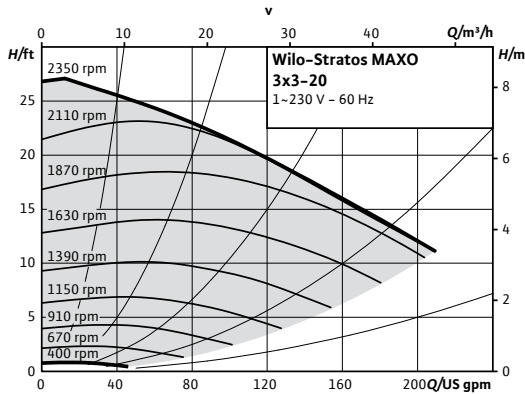
WILO Mexico
+52 442 167 00 32
www.wilo-mexico.com
info@wilo.com.mx

Wilo-Stratos MAXO



Project:	
Engineer:	
Contractor:	
Submitted By:	Date:
Approved By:	Date:

Tag #	Model #	Flow	Head	Control Mode	Cycle	Phase	Voltage
	Maxo 3x3-20				60Hz	1~	230-240V



Product Info

Brand	Wilo
Product Description	Stratos MAXO 3x3-20
Article Number	2164617
Net Weight (approx.)	70 lbs

Materials

Pump Housing	EN-GJL-250
Impeller	PPS-GF40
Shaft	X30Cr13
Bearing	Carbon, antimony-impregnated

Hydraulic Data

Max Operating Pressure PN	145 PSI
Min. Suction Head (122°F)	10 PSI
Min. Suction Head (203°F)	21.3 PSI
Min. Suction Head (230°F)	32.7 PSI
Min. Fluid Temp.	14°F
Max Fluid Temp.	230°F
Min. Ambient Temp	14°F
Max. Ambient Temp	104°F

Motor Data

Mains Connection	1-230-240 V ±10%, 50/60Hz
Motor Type	ECM
Rated Power P ₂	0.995 hp
Min. Speed n _{min}	400 RPM
Max. Speed n _{max}	2350 RPM
Power Consumption P _{1,max}	1.093 hp
Power Consumption P _{1,min}	0.020 hp
Max Current (1-230V) I _{max}	3.54 A
Min Current (1-230V) I _{min}	0.3 A
Insulation Class	F
Protection Class	Enclosure 2

CIF Module Selection

- BACnet MS/TP
- Modbus RTU
- CANopen
- LON TP/FT-10
- PLR

Accessory Selection

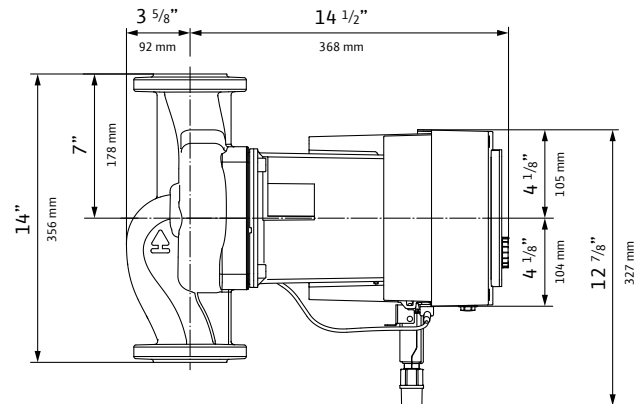
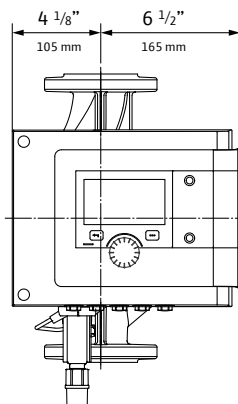
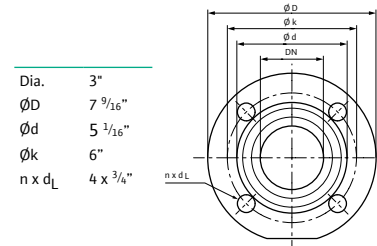
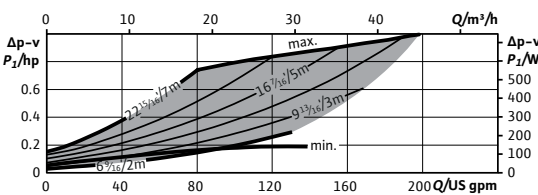
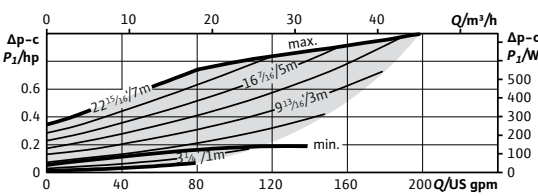
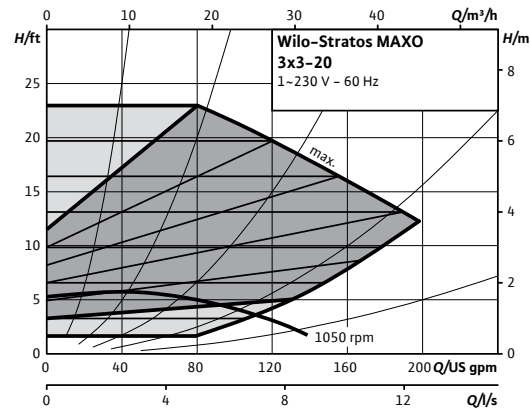
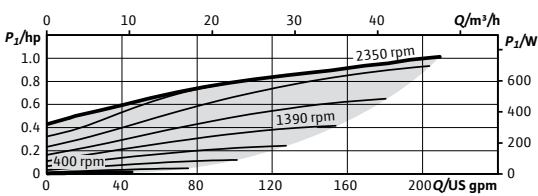
- Immersion Temp. Sensor PT 1000 AA
- Immersion Sleeve G 1/2", 45mm
- Pipe Surface Contact Sensor PT 1000 B
- Immersion Sleeve G 1/2", 100mm

Electrical Inputs

Analog Inputs (2x)	0-10V / 0-20mA / 4-20mA /PT 1000 Passive/Active +24V DC
Digital Inputs (2x)	Ext Off / Ext Min / Ext Max / Ext. MANUAL (BMS off) / External Key Lock / Switch heating, cooling
Wilo NET	Multi-Pump Communication
SSM	Fault Signal
SBM	Run Signal

Installation Dimensions

- Pipe Connection (discharge) 3"
- Pipe Connection (suction) 3"
- Flange to Flange 14"



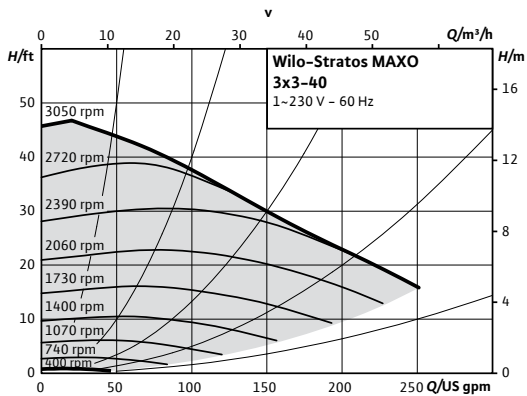
WILO USA LLC
+1 262 204-6600
www.wilo-usa.com
info.us@wilo.com

WILO Canada Inc.
+1 403 276-9456
www.wilo-canada.com
info@wilo-canada.com

WILO Mexico
+52 442 167 00 32
www.wilo-mexico.com
info@wilo.com.mx

Wilo-Stratos MAXO

		Project:					
		Engineer:					
		Contractor:					
		Submitted By:			Date:		
		Approved By:			Date:		
Tag #	Model #	Flow	Head	Control Mode	Cycle	Phase	Voltage
	Maxo 3x3-40				60Hz	1~	230-240V



Product Info

Brand	Wilo
Product Description	Stratos MAXO 3x3-40
Article Number	2164618
Net Weight (approx.)	72 lbs

Materials

Pump Housing	EN-GJL-250
Impeller	PPS-GF40
Shaft	X30Cr13
Bearing	Carbon, antimony-impregnated

Hydraulic Data

Max Operating Pressure PN	145 PSI
Min. Suction Head (122°F)	10 PSI
Min. Suction Head (203°F)	21.3 PSI
Min. Suction Head (230°F)	32.7 PSI
Min. Fluid Temp.	14°F
Max Fluid Temp.	230°F
Min. Ambient Temp	14°F
Max. Ambient Temp	104°F

Motor Data

Mains Connection	1-230-240 V ±10%, 50/60Hz
Motor Type	ECM
Rated Power P ₂	1.641 hp
Min. Speed n _{min}	400 RPM
Max. Speed n _{max}	3050 RPM
Power Consumption P _{1,max}	1.810 hp
Power Consumption P _{1,min}	0.020 hp
Max Current (1-230V) I _{max}	5.88 A
Min Current (1-230V) I _{min}	0.3 A
Insulation Class	F
Protection Class	Enclosure 2

CIF Module Selection

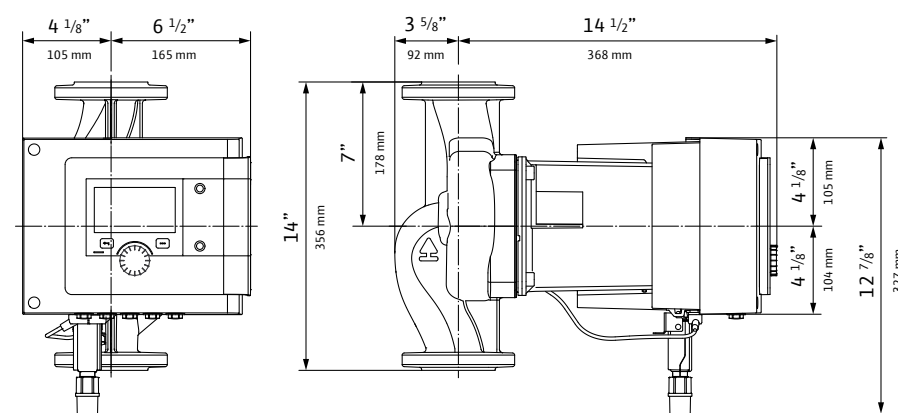
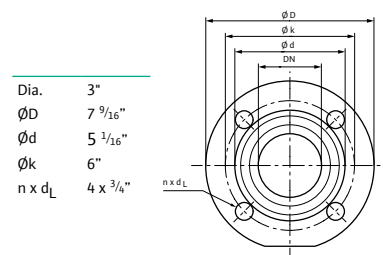
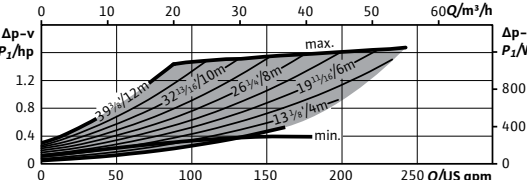
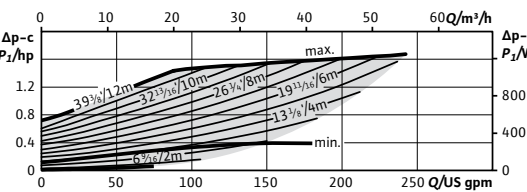
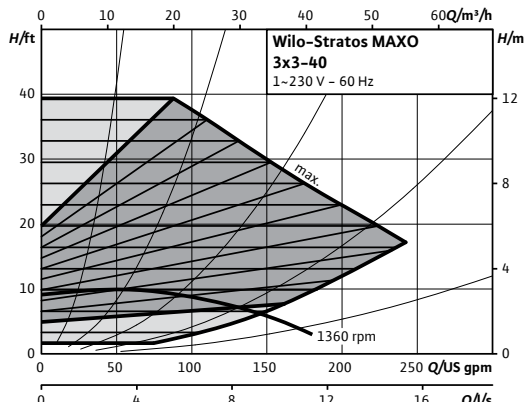
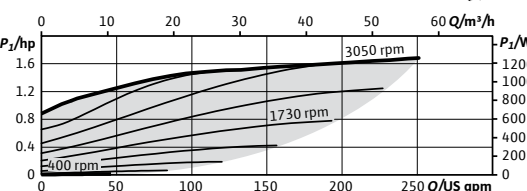
- BACnet MS/TP
- Modbus RTU
- CANopen
- LON TP/FT-10
- PLR

Electrical Inputs

Analog Inputs (2x)	0-10V / 0-20mA / 4-20mA / PT 1000 Passive/Active +24V DC
Digital Inputs (2x)	Ext Off / Ext Min / Ext Max / Ext. MANUAL (BMS off) / External Key Lock / Switch heating, cooling
Wilo NET	Multi-Pump Communication
SSM	Fault Signal
SBM	Run Signal

Accessory Selection

- Immersion Temp. Sensor Pt 1000 AA
- Immersion Sleeve G 1/2", 45mm
- Pipe Surface Contact Sensor PT 1000 B
- Immersion Sleeve G 1/2", 100mm



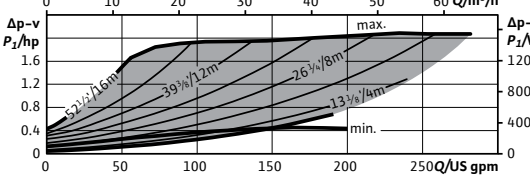
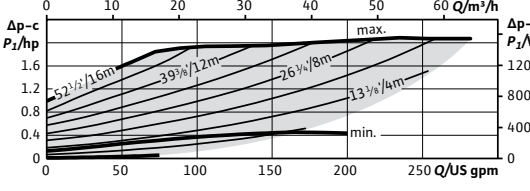
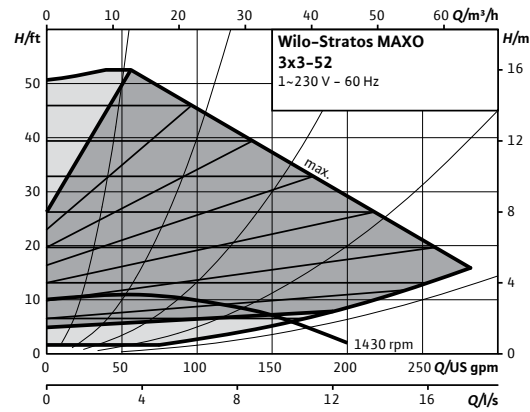
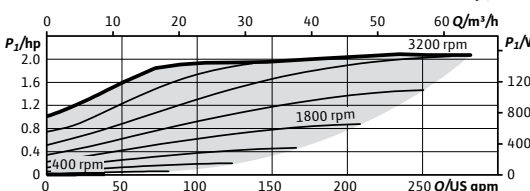
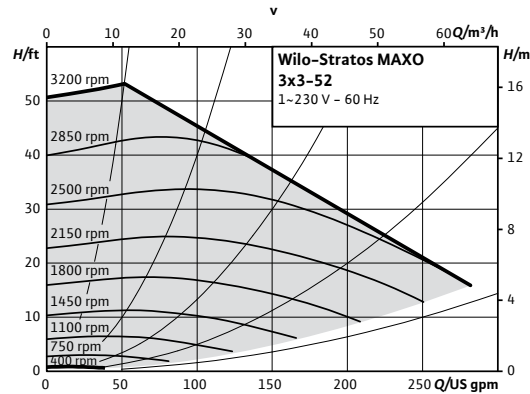
WILO USA LLC +1 262 204-6600 www.wilo-usa.com info.us@wilo.com	WILO Canada Inc. +1 403 276-9456 www.wilo-canada.com info@wilo-canada.com	WILO Mexico +52 442 167 00 32 www.wilo-mexico.com info@wilo.com.mx
---	--	---

Wilo-Stratos MAXO



Project:	
Engineer:	
Contractor:	
Submitted By:	Date:
Approved By:	Date:

Tag #	Model #	Flow	Head	Control Mode	Cycle	Phase	Voltage
	Maxo 3x3-52				60Hz	1~	230-240V



Product Info

Brand	Wilo
Product Description	Stratos MAXO 3x3-52
Article Number	2164619
Net Weight (approx.)	72 lbs

Hydraulic Data

Max Operating Pressure PN	145 PSI
Min. Suction Head (122°F)	10 PSI
Min. Suction Head (203°F)	21.3 PSI
Min. Suction Head (230°F)	32.7 PSI
Min. Fluid Temp.	14°F
Max Fluid Temp.	230°F
Min. Ambient Temp	14°F
Max. Ambient Temp	104°F

CIF Module Selection

BACnet MS/TP
Modbus RTU
CANopen
LON TP/FT-10
PLR

Accessory Selection

Immersion Temp. Sensor PT 1000 AA
Immersion Sleeve G 1/2", 45mm
Pipe Surface Contact Sensor PT 1000 B
Immersion Sleeve G 1/2", 100mm

Materials

Pump Housing	EN-GJL-250
Impeller	PPS-GF40
Shaft	X30Cr13
Bearing	Carbon, antimony-impregnated

Motor Data

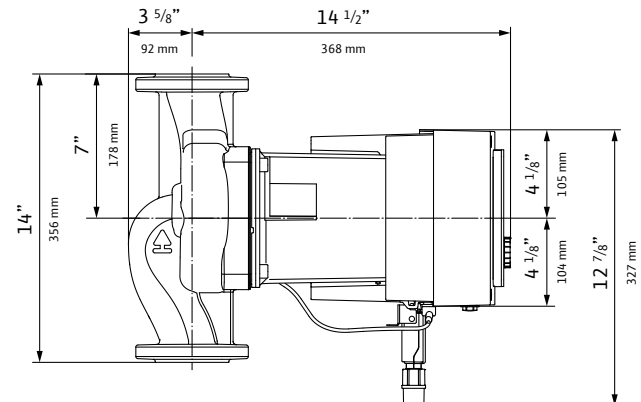
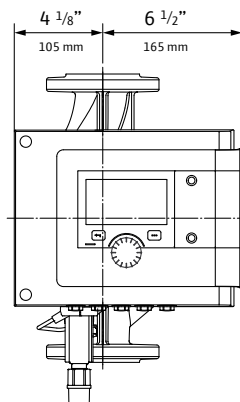
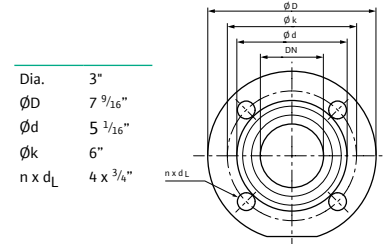
Mains Connection	1~230-240 V ±10%, 50/60Hz
Motor Type	EMC
Rated Power P ₂	2.038 hp
Min. Speed n _{min}	400 RPM
Max. Speed n _{max}	3200 RPM
Power Consumption P _{1,max}	2.206 hp
Power Consumption P _{1,min}	0.020 hp
Max Current (1~230V) I _{max}	7.14 A
Min Current (1~230V) I _{min}	0.3 A
Insulation Class	F
Protection Class	Enclosure 2

Electrical Inputs

Analog Inputs (2x)	0-10V / 0-20mA / 4-20mA / PT 1000 Passive/Active +24V DC
Digital Inputs (2x)	Ext Off / Ext Min / Ext Max / Ext. MANUAL (BMS off) / External Key Lock / Switch heating, cooling
Wilo NET	Multi-Pump Communication
SSM	Fault Signal
SBM	Run Signal

Installation Dimensions

Pipe Connection (discharge)	3"
Pipe Connection (suction)	3"
Flange to Flange	14"



WILO USA LLC
+1 262 204-6600
www.wilo-usa.com
info.us@wilo.com

WILO Canada Inc.
+1 403 276-9456
www.wilo-canada.com
info@wilo-canada.com

WILO Mexico
+52 442 167 00 32
www.wilo-mexico.com
info@wilo.com.mx