

Overview

Weil's 4100 Series condensate return system is designed to collect steam condensate and pump it to a boiler feed receiver. The turbine pump is better suited for high head, low flow condensate return applications.

Turbine Condensate Systems - Arranged by Discharge Pressure then EDR

Discharge Pressure (PSI)	Capacity Sq. Ft. (EDR)	Pump Capacity (GPM)	Discharge Size (NPT)	Receiver Capacity (Gallons)	Motor HP (1750 RPM)	Model Number	
						Simplex	Duplex
10	1,000	1.5	1	15	1/2	4121A	4122A
	2,000	3	1	15	1/2	4121A	4122A
	4,000	6	1	15	1/2	4121A	4122A
	6,000	9	1	15	1/2	4121A	4122A
	8,000	12	1	15	1/2	4121B	4122B
	10,000	15	1	15	3/4	4121C	4122C
	15,000	35	1 1/4	26	3/4	4131D	4132D
20	1,000	1.5	1	15	1/2	4121A	4122A
	2,000	3	1	15	1/2	4121A	4122A
	4,000	6	1	15	1/2	4121A	4122A
	6,000	9	1	15	1/2	4121B	4122B
	8,000	12	1	15	3/4	4121C	4122C
	10,000	15	1	15	3/4	4121C	4122C
	15,000	29	1 1/4	26	1	4121D	4132D
30	1,000	1.5	1	15	1/2	4121A	4122A
	2,000	3	1	15	1/2	4121A	4122A
	4,000	6	1	15	1/2	4121B	4122B
	6,000	9	1	15	3/4	4121C	4122C
	15,000	24	1 1/4	26	1 1/2	4121D	4132D
40	15,000	20	1 1/4	26	1 1/2	4121D	4132D

TEFC Motors: 1750 RPM, 3 Phase, 60 Hz, 208-230/460 Volt

4121 Simplex Models Include:

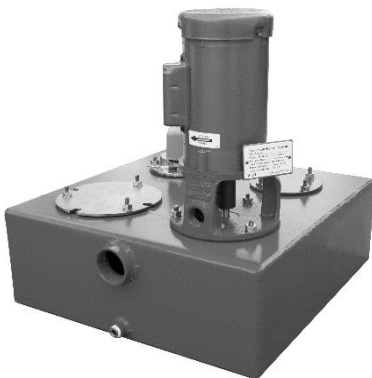
- One Vertical turbine pump with TEFC Motor
- Cast Iron Pump Case
- Bronze Impeller
- Steel Receiver
- Stainless Steel Shaft
- Float Switch - NEMA 1

4122 Duplex Models Include:

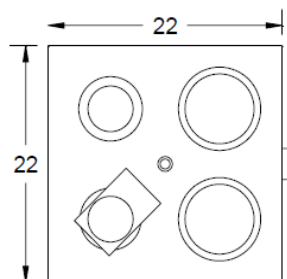
- Two Vertical turbine pump with TEFC Motor
- Cast Iron Pump Cases
- Bronze Impellers
- Steel Receiver
- Stainless Steel Shafts
- Mechanical Alternator - NEMA 1

Available Options:

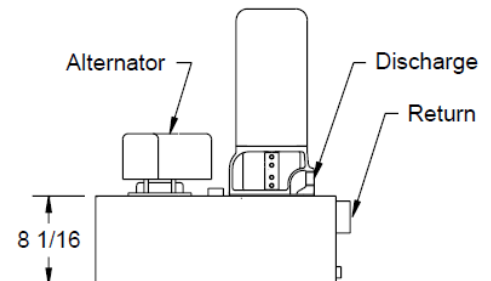
- Water Gauge Glass
- Angle Thermometer
- Bronze Pump Case
- Float Switch - use as an alarm or stand-by
- Single Phase Motors (115/208-230 Volt)



4121 Simplex Condensate Pump

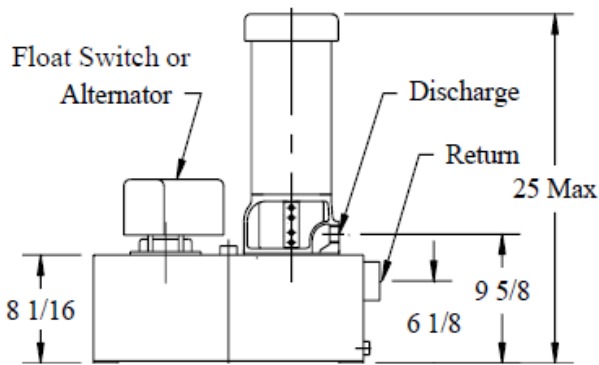
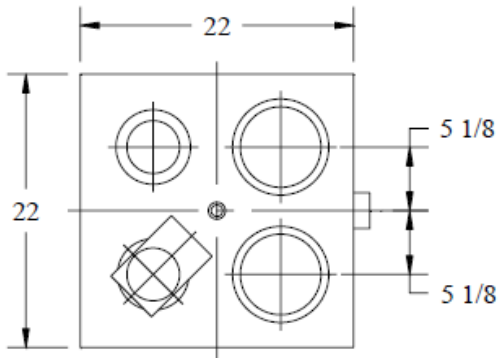


Top View of 15 Gallon Receiver

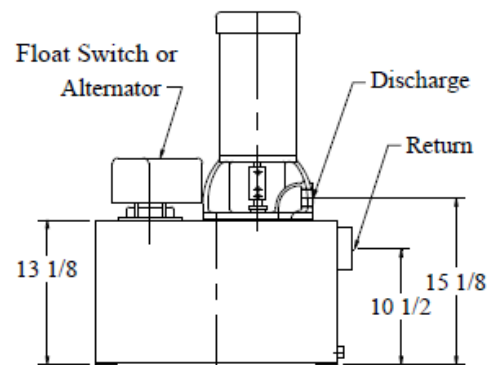
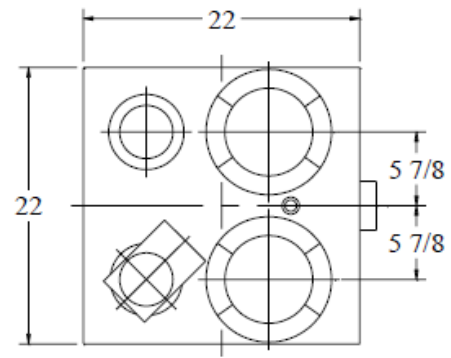


Side view of 4122

15 Gallon Receiver



26 Gallon Receiver



Replacement Turbine Pump Assemblies

Receiver Size	Discharge Size	Motor HP	Pump Code	Replacement Part No.	
				Cast Iron	Bronze
10 or 15 Gallons	1	1/4 - 1/2	A	205.766.102	205.766.101
	1	1/2	B	205.768.102	205.768.101
	1	3/4	C	205.769.102	205.769.101
26 Gallons	1	1/4 - 1/2	A	205.770.102	205.770.101
	1	1/2	B	205.771.102	205.771.101
	1	3/4	C	205.772.102	205.772.101
	1 1/4	1/2 - 1 1/2	D	205.781.102	205.781.101

- Turbine pump assembly does not include motor. If needed, see replacement motor chart below.

- All pump models are stock items

- All motors are stock

Replacement Motors

HP	Phase	Voltage	Replacement Part No.
1/2	1	115/208-230	320.012.043
1/2	3	208-230/460	320.012.217
3/4	1	115/208-230	320.013.058
3/4	3	208-230/460	320.013.330
1	1	115/208-230	320.014.338
1	3	208-230/460	320.014.379
1 1/2	1	115/208-230	320.015.335
1 1/2	3	208-230/460	320.015.277

TEFC Motors: 1750 RPM, 3 Phase, 60 Hz, 208-230/460 Volt