



A WILO BRAND

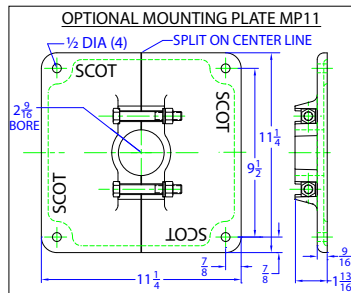
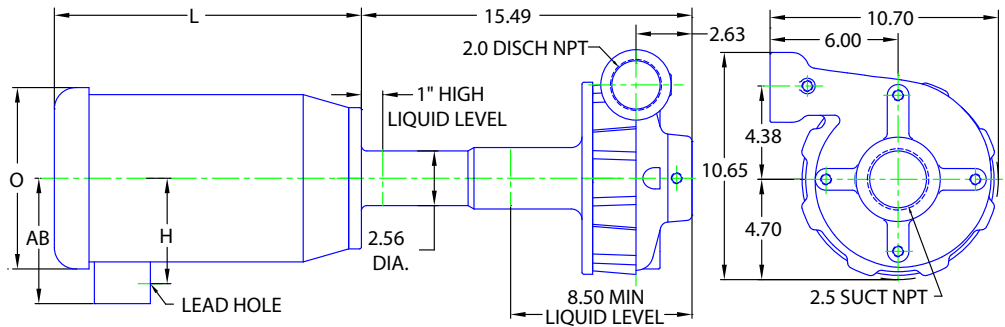
MOTORPUMP™ — 3500 RPM

Iron, 60 Hz, 2.5 X 2 X 6.5 NPT

52 TCV

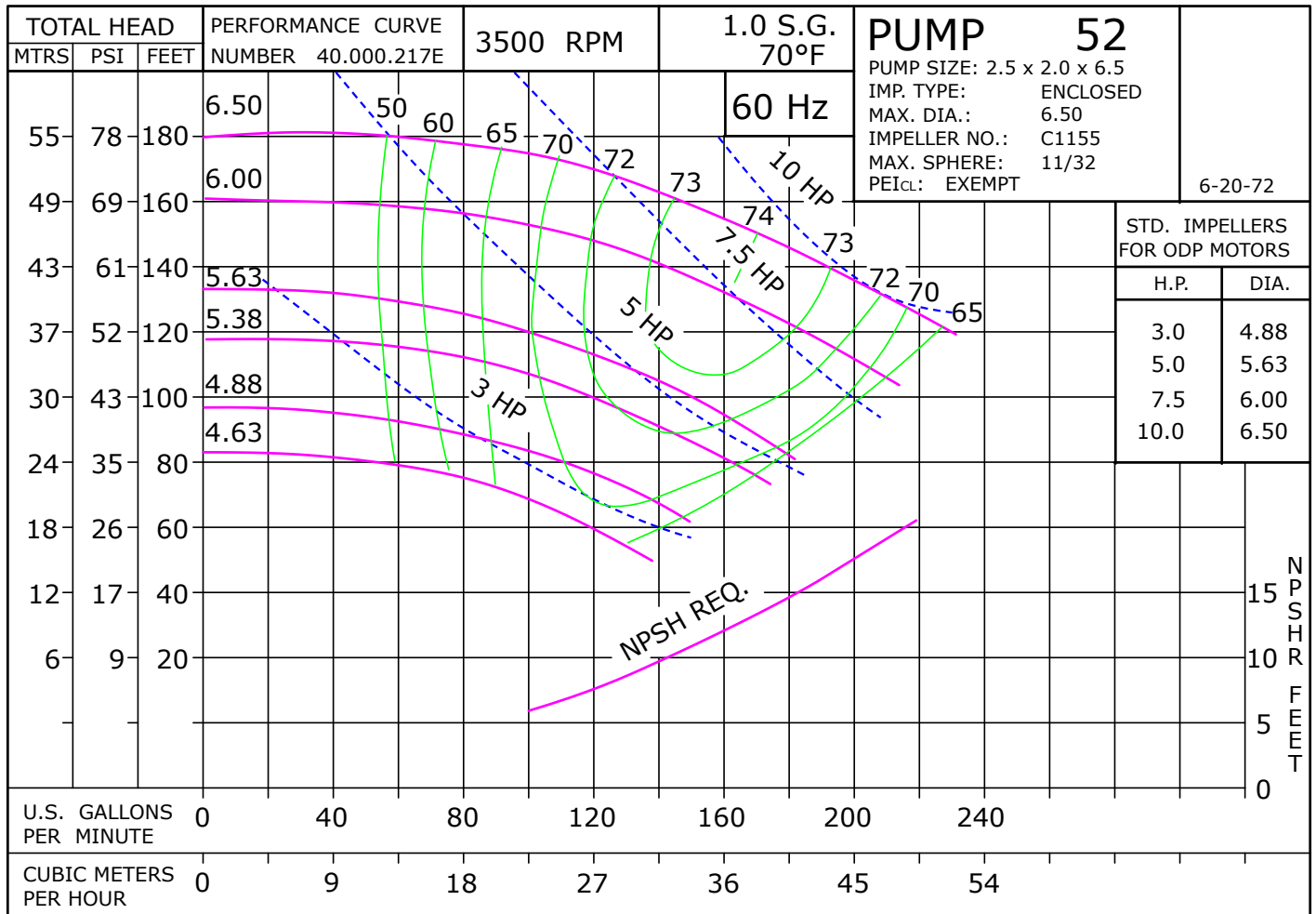
VWE 52

DRAWING DEPCITS TCV184 5HP 3PHASE TEFC MOTOR
ALL DIMENSIONS IN INCHES

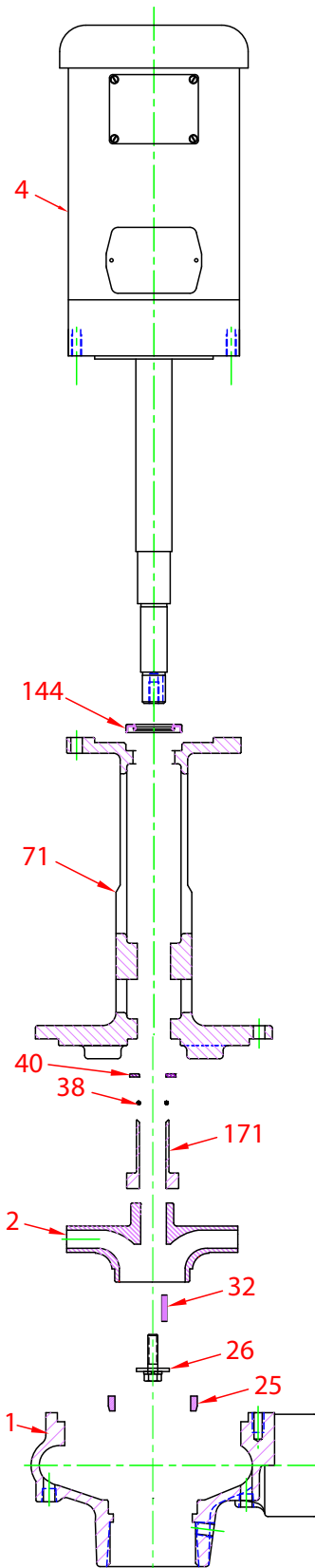


| Motor Dimensions | | | | | | | | | |
|--|--------|---------|------|-------|------|---------|------|-------|------|
| NEMA Premium Efficient TCV Frame 3500 RPM TEFC | | | | | | | | | |
| HP | Frame | 3 Phase | | | | 1 Phase | | | |
| | | L | AB | O | H | L | AB | O | H |
| 3.0 | TCV145 | 14.51 | 5.25 | 7.19 | 4.18 | 12.27 | 5.74 | 7.19 | 4.63 |
| 5.0 | TCV184 | 15.83 | 6.00 | 8.60 | 4.94 | 15.92 | 6.00 | 8.54 | 4.94 |
| 7.5 | TCV215 | 16.16 | 7.46 | 10.34 | 6.23 | 16.16 | 7.46 | 10.34 | 6.23 |
| 10.0 | TCV215 | 16.16 | 7.46 | 10.34 | 6.23 | 17.23 | 8.68 | 10.22 | 7.45 |

Single phase motors are standard efficient



Parts



| Key | Part Name | Part Number | |
|-------|--|-------------------|-----------------------|
| | | #Spec Series | |
| | | 3190 Old Style | 3435 Current Style |
| 1 | Case 52, Iron, 2.5 X 2.0 NPT, Steel wear ring & zinc plugs | 130.000.219X1 | |
| 2 | Impeller 52, Iron, Specify Dia., 6.50 Max 7/8" Key | 137.000.120 | |
| 4 | Motor chart, TCV 3500 rpm | See Chart | |
| 25 | Wear ring, Steel | 103.000.154 | |
| 26*^ | Impeller retaining assembly, Stainless | 118.000.163A | |
| 32*^ | Key, Stainless | 102.000.102 | |
| 38*^ | O-ring, Shaft, Viton | 116.000.105 | |
| 40*^ | Flinger, Stainless | 104.000.165A | |
| 71 | Adapter, Iron, TCV with slot for flinger, o-ring | - | ^132.000.291B |
| | Adapter, Iron, TCV | 132.000.291 | - |
| 144*^ | Lip Seal, Buna | 101.000.244 | |
| 171* | Throttle bushing, Steel with O-ring Chamfer | - | ^110.000.348C |
| | Throttle bushing, Steel | 110.000.348 | - |
| KIT | Repair Kit, TCV, requires slotted adapter | - | 118.000.628 |
| | Repair Kit, TCV Frame VWE | 118.000.546 | - |
| NS | Kit, Mounting Plate, Iron, MP11 includes the following: | 118.000.329 | |
| | Mounting Plate, Iron | 132.000.292 | |
| | Cap screw, zinc | 105.000.457 | |
| | Washer, Flat, Plated | 137.000.697 | |
| | Nut, plated steel | 105.000.122 | |
| RETRO | Retro Fit Kit, includes adapter, bushing, flinger & O-ring | 118.000.625 | |

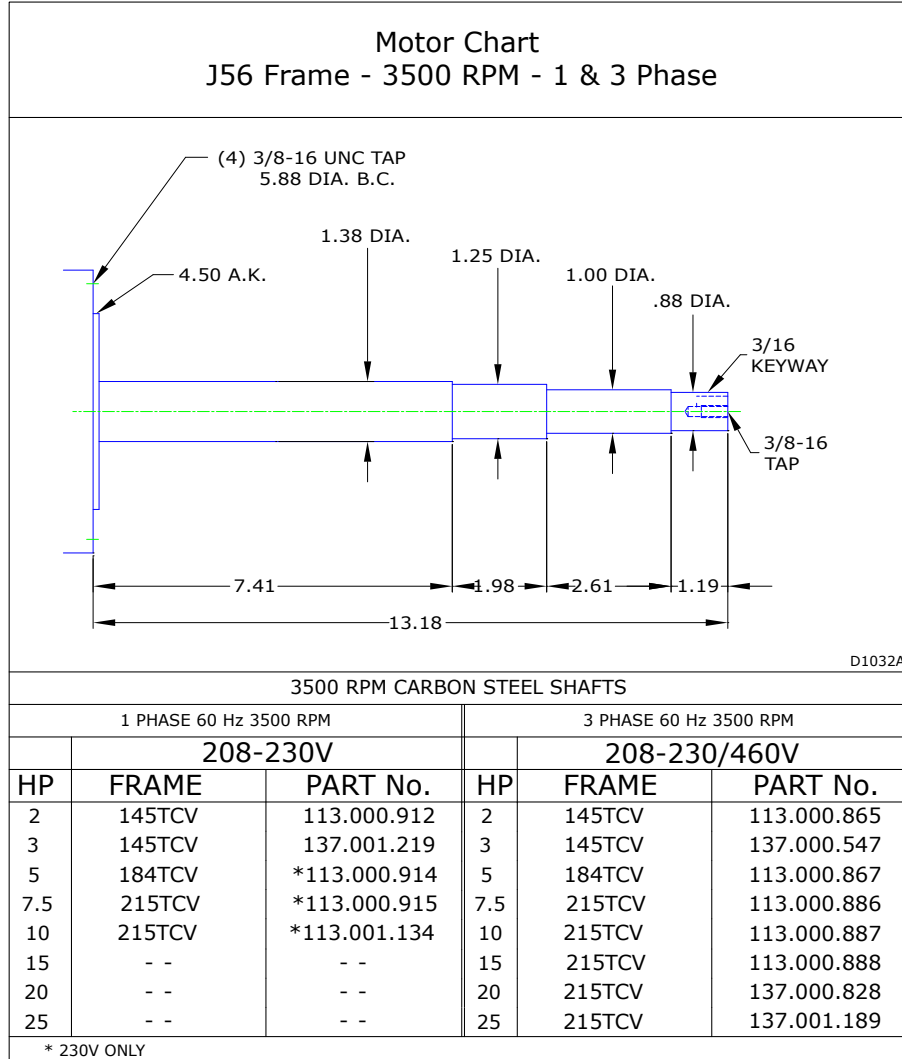
NS=Not Shown

* Denotes included in repair kit.

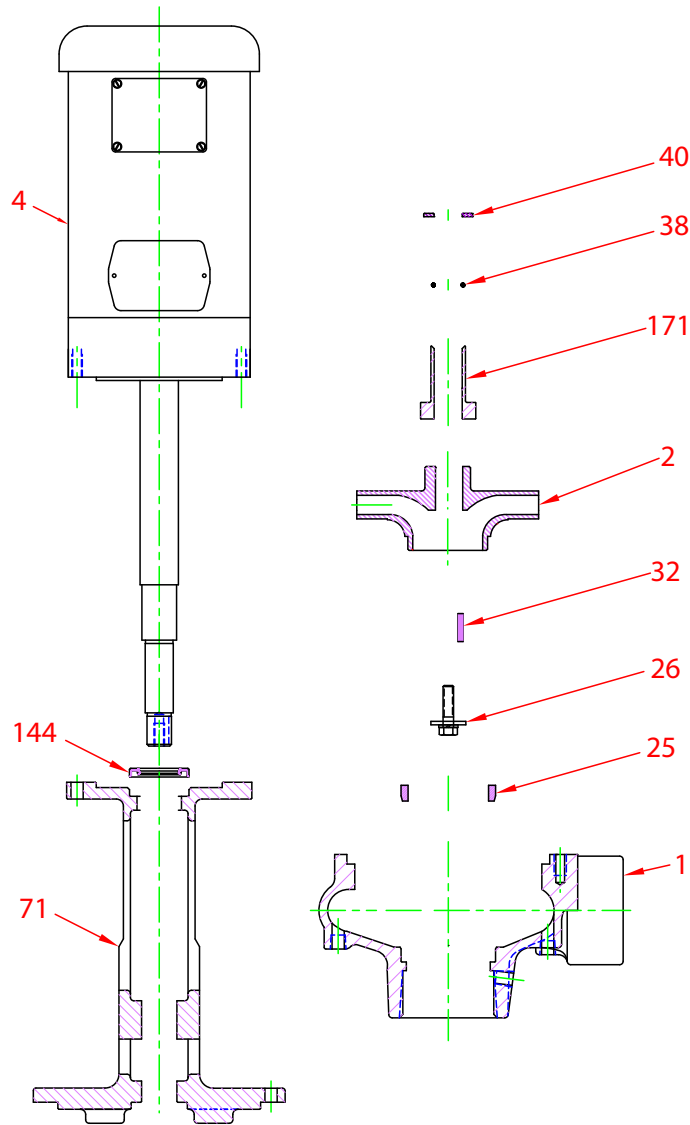
^ Denotes items included in retrofit kit.

#Spec series 3190 was manufactured from 1984 through 01/13/04.

Motor Charts



Construction Options



| Key | Part Name | All Iron |
|-----|----------------------------------|-----------|
| 1 | Case | Iron |
| 2 | Impeller | Iron |
| 25 | Wear Ring | Steel |
| 26 | Impeller Retainer Assembly | Stainless |
| 32 | Key | Stainless |
| 38 | O-ring, Shaft | Viton |
| 40 | Flinger | Stainless |
| 71 | Adapter | Iron |
| 144 | Lip Seal | BUNA |
| 171 | Throttle Bushing | Steel |
| NS | Mounting Plate MP11: (not shown) | Iron |