

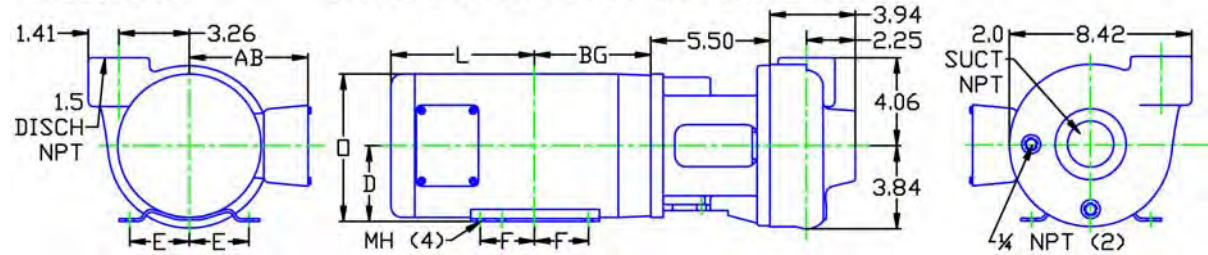
#### MOTOR DIMENSIONS

#### NEMA TC FRAME 3 PHASE 3500 RPM

HP	TYPE	Frame	D	E	F	O	AB	BG	L	MH
2	TEFC	TC145	3.50	2.75	2.50	7.12	6.18	4.75	6.31	.34
3	TEFC	TC182	4.50	3.75	2.25	9.34	7.56	5.00	6.99	.41
5	TEFC	TC184	4.50	3.75	2.75	9.34	7.56	5.50	7.49	.41
7.5	TEFC	TC213	5.25	4.25	2.75	10.84	8.58	6.25	8.40	.41

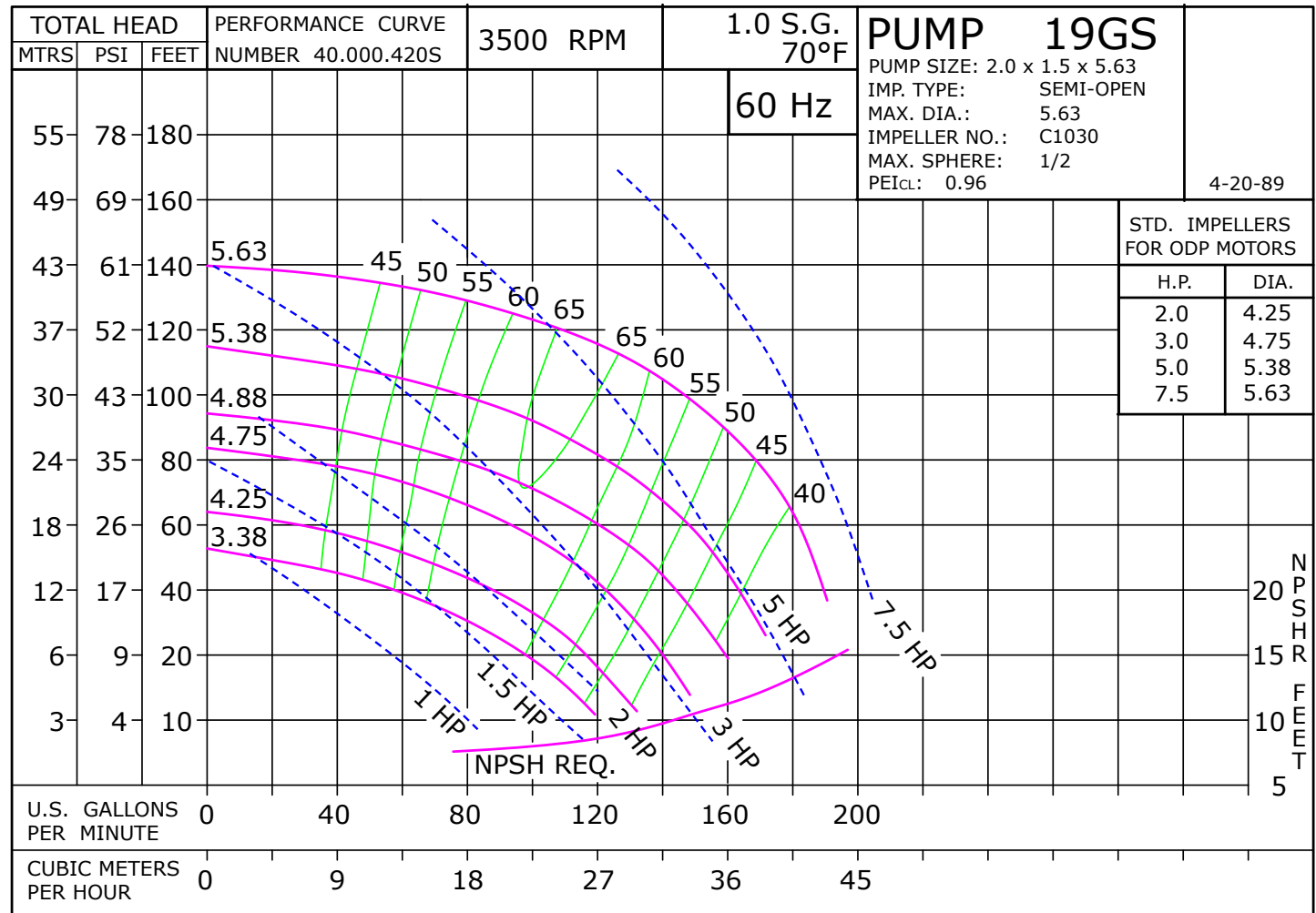
D019GSTC145

DRAWING DEPICTS 145TC 3HP ODP MOTOR



ALL DIMENSIONS IN INCHES.

DRAWING REPRESENTS APPROXIMATE PUMP DIMENSIONS. AUTOCAD DRAWINGS TO SCALE



019GS3TE

D019GSTC145  
019G3500

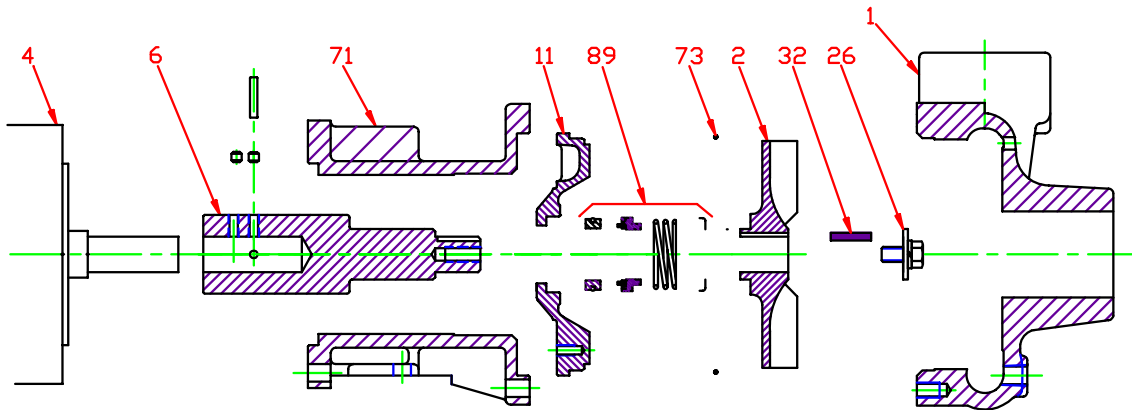
# 19GS

TC

019GS3500TC  
81.001.530

A20

# Pump 19GS • 316SS • TC Frame • 3500 RPM



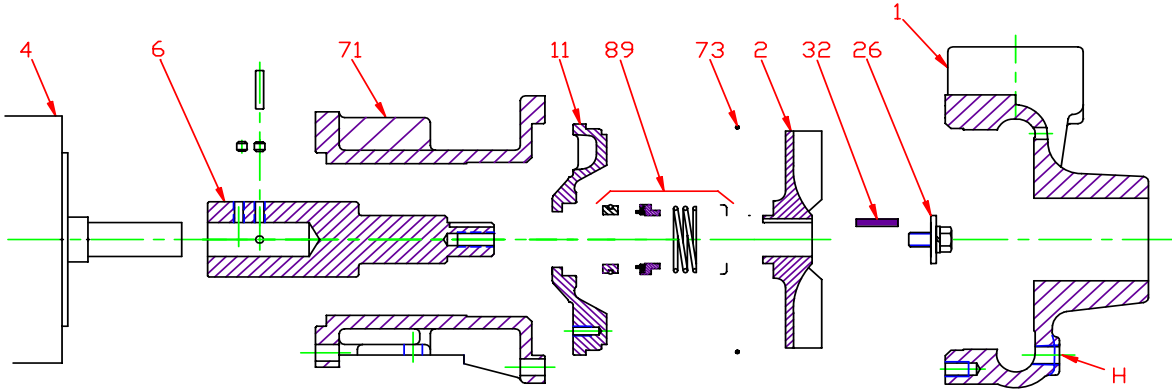
KEY NO.	PART NAME	TC140	TC180	TC210
1	CASE, 316SS, 2 x 1.5 NPT		137.000.841X	
2	IMPELLER, 7/8" KEYED, SEMI-OPEN, SPECIFY DIAMETER: 316SS		131.000.782	
4	MOTOR, TC	See Chart	See Chart	See Chart
6*+	STUB SHAFT ASS'Y, 316SS	135.000.221X	135.000.221AX	135.000.221BX
11	BACKPLATE, 316SS		132.000.224	
26*	IMPELLER RETAINER, 316SS		118.000.111C	
32*	KEY, 316SS		102.000.218	
71	ADAPTER, IRON	132.000.120	132.000.122	132.000.122
73*	GASKET, CASE, VITON		116.000.150	
89*	SEAL, 1¼", VN-SIL/SIL		101.000.203A	
--	REPAIR KIT, VN-SIL/SIL	118.000.539A	118.000.540A	118.000.541A
* DENOTES COMPONENTS INCLUDED IN REPAIR KIT.				
+ ASS'Y INCLUDES STUB SHAFT, PIN, SET SCREWS AND KEY.				

E019GSTC

M16

P019GS3500TC

**Pump 19GS • 316SS • TC Frame • 3500 RPM**



CONSTRUCTION OPTIONS		
KEY NO.	PART NAME	STANDARD FITTED
1	CASE	316SS
2	IMPELLER	316SS
6	STUB SHAFT ASS'Y	316SS
11	BACKPLATE	316SS
26	IMPELLER RETAINER	316SS
32	KEY	316SS
71	ADAPTER	IRON
73	GASKET, CASE	VITON
89	SEAL ASSEMBLY	VN-SIL/SIL
H	PLUG, DRAIN	316SS

E019GSTC

C15

C019GS3500TC