



A WILO BRAND

MOTORPUMP™ — 1750 RPM

Iron, 60 Hz, 2.5 X 2.5 X 6.5 ANSI FLG

53F JM

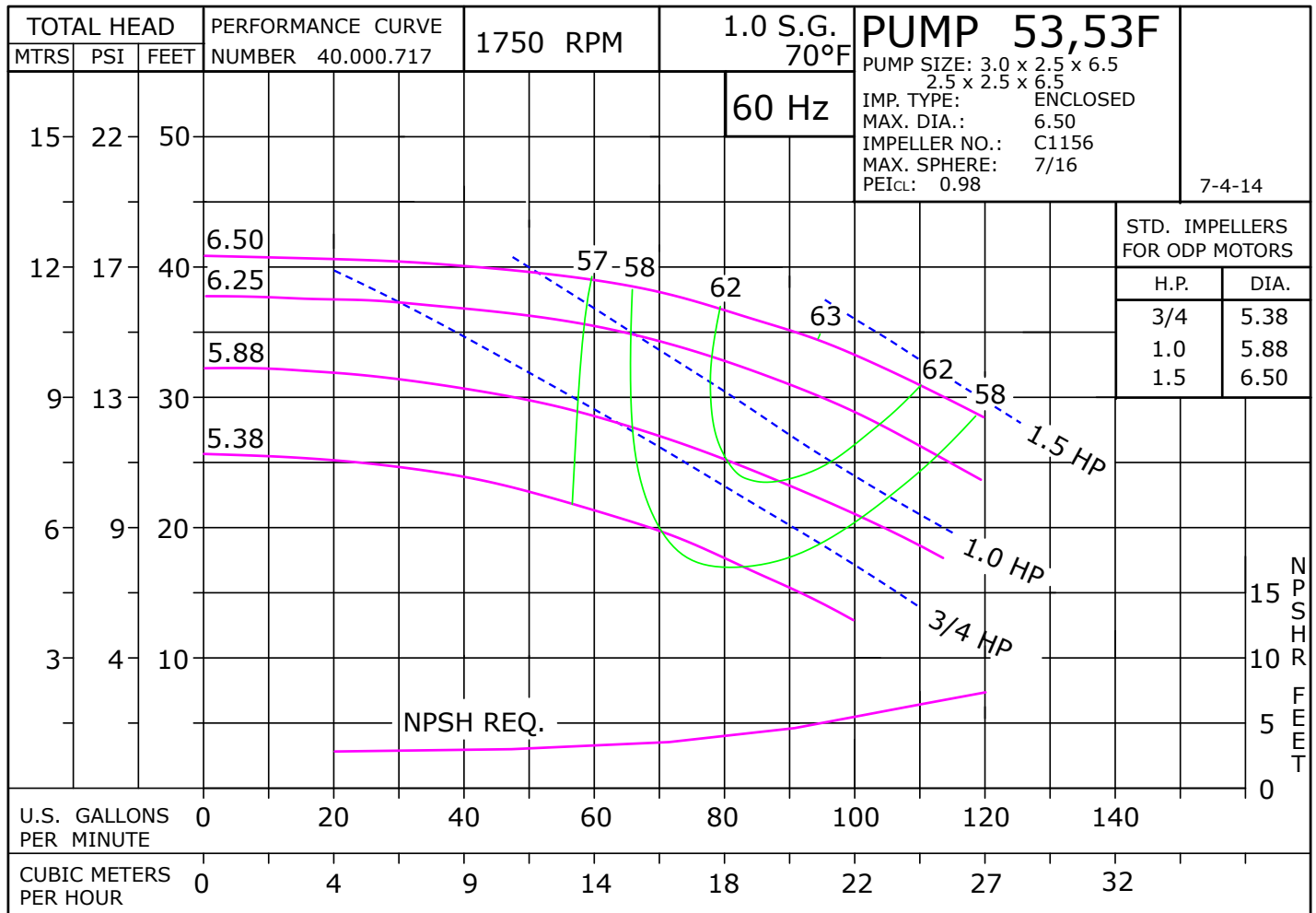
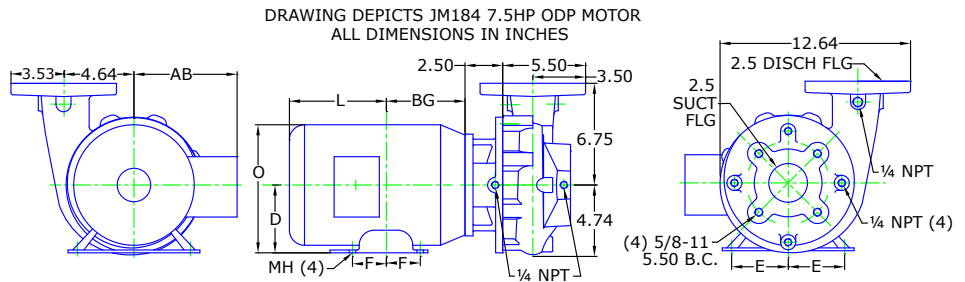


MOTOR DIMENSIONS

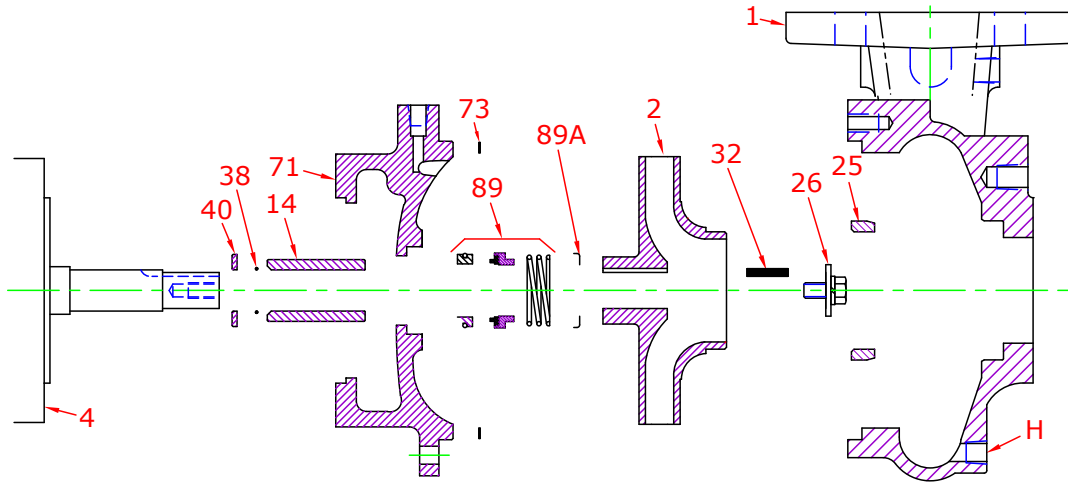
NEMA JM FRAME 3 PHASE 1750 RPM

| HP | Type | Frame | D | E | F | O | AB | BG | L | MH |
|-----|------|-------|------|------|------|------|------|------|------|------|
| 1 | ODP | JM143 | 3.50 | 2.75 | 2.00 | 6.72 | 5.87 | 4.75 | 4.70 | 0.34 |
| 1.5 | ODP | JM143 | 3.50 | 2.75 | 2.50 | 6.72 | 5.87 | 5.25 | 5.36 | 0.34 |
| 1 | TEFC | JM143 | 3.50 | 2.75 | 2.00 | 7.00 | 6.25 | 4.57 | 5.84 | 0.34 |
| 1.5 | TEFC | JM145 | 3.50 | 2.75 | 2.50 | 7.00 | 6.25 | 5.06 | 6.34 | 0.34 |

See C56 frame for 3/4 HP



Parts

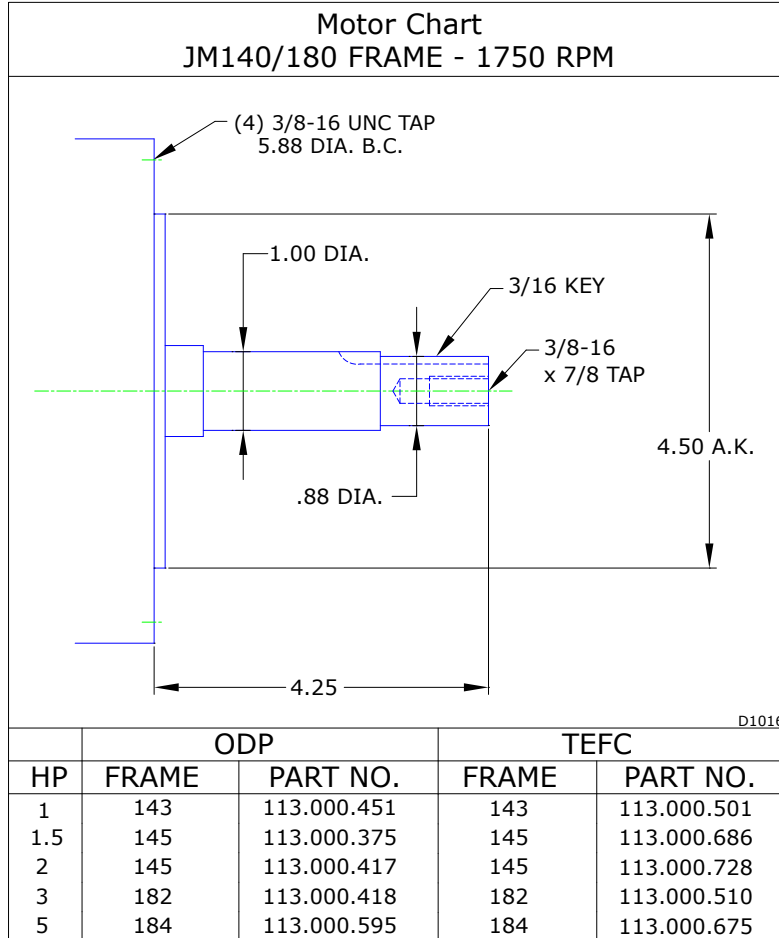


| Key | Part Name | Part Number |
|-----|--------------------------------------------------------------|--------------|
| 1+ | Case 53/54F, Iron, 2.50 X 2.50 FLG Bronze Wear Ring & plugs | 130.000.184X |
| 2 | Impeller 53, Bronze, Specify Dia 6.50 Max 7/8" Key | 137.000.205 |
| | Impeller 53, Iron, Specify Dia 6.50 X 7/8" Key | 137.000.206 |
| 4 | Motor chart, JM140/180 | See Chart |
| 14* | Shaft sleeve, Bronze | 110.000.178 |
| | Shaft sleeve, Stainless | 110.000.192 |
| 25 | Wear ring, Bronze | 103.000.137 |
| | Wear ring, Steel | 103.000.153 |
| 26* | Impeller retaining assembly, Stainless | 118.000.163A |
| 32* | Key, Stainless | 102.000.102 |
| 38* | O-ring, Shaft, Buna | 116.000.117 |
| | O-ring, Shaft, Viton | 116.000.105 |
| 40* | Flinger, Stainless | 104.000.165 |
| 71 | Adapter, Iron, JM140/180 1-1/2" Seal, with Brass plug | 132.000.202X |
| 73* | Gasket, Case, Fiber | 116.000.157 |
| 89* | Seal, 1-1/2", Type 21, BN-CARB/CM | 101.000.168 |
| | Seal, 1-1/2", Type 21, EPDM-CARB/SIL | 101.000.175B |
| | Seal, 1-1/2", Type 21, EPDM-SIL/SIL | 101.000.204A |
| | Seal, 1-1/2", Type 21, VN-CARB/CM | 101.000.191 |
| | Seal, 1-1/2", Type 21, VN-CARB/SIL | 101.000.175 |
| | Seal, 1-1/2", Type 21, VN-SIL/SIL | 101.000.204 |
| 89A | Seal spring retainer, Stainless | 104.000.174 |
| KIT | Repair Kit, 1-1/2" BN-CARB/CM Seal, Brz sleeve, BN O-ring | 118.000.344 |
| | Repair Kit, 1-1/2" EPDM-CARB/SIL Seal, Brz sleeve, BN O-ring | 118.000.344C |
| | Repair Kit, 1-1/2" EPDM-SIL/SIL Seal, Brz sleeve, BN O-ring | 118.000.344D |
| | Repair Kit, 1-1/2" VN-CARB/CM Seal, Brz sleeve, BN O-ring | 118.000.344K |
| | Repair Kit, 1-1/2" VN-CARB/CM Seal, Stn sleeve, VN O-ring | 118.000.344A |
| | Repair Kit, 1-1/2" VN-CARB/SIL Seal, Brz sleeve, BN O-ring | 118.000.344B |
| | Repair Kit, 1-1/2" VN-SIL/SIL Seal, Stn sleeve, VN O-ring | 118.000.344F |

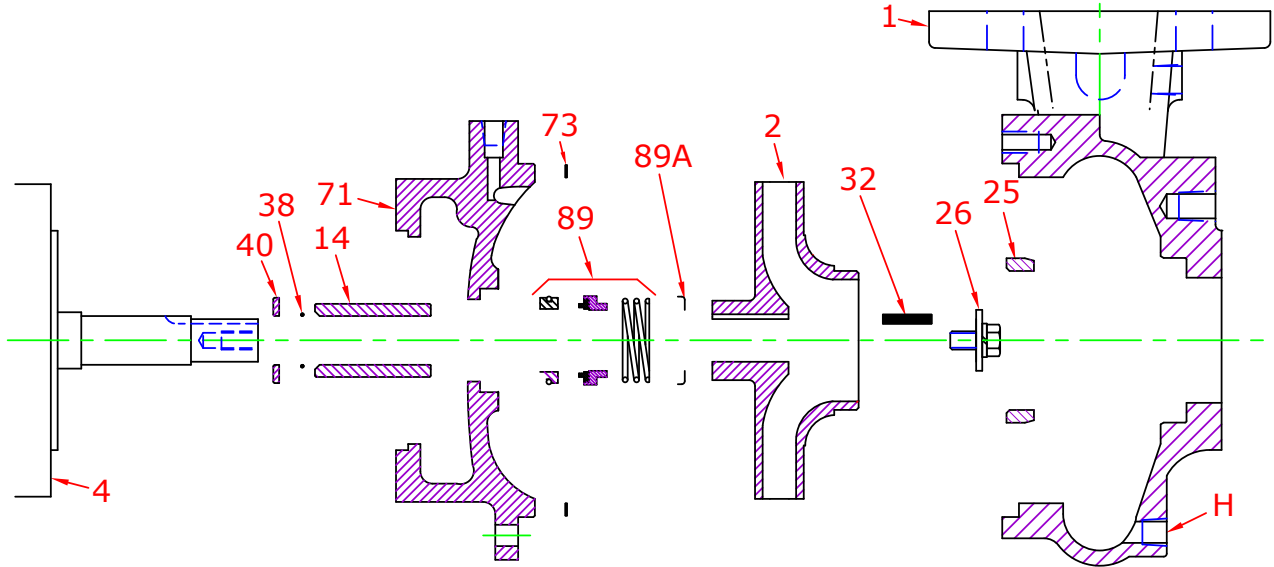
* Denotes components included in repair kit.

+ Includes bronze wear ring. For steel, replace suffix "X" with "X1".

Motor Charts



Construction Options



| Construction Options | | | | |
|----------------------|--------------------------------|-----------------|---------------|--------------|
| Key | Part Name | Standard Fitted | Bronze Fitted | All Iron |
| 1 | Case | Iron | Iron | Iron |
| 2 | Impeller | Iron | Bronze | Iron |
| 14 | Shaft Sleeve | Bronze | Bronze | Stainless |
| 25 | Wear Ring | Bronze | Bronze | Steel |
| 26 | Impeller Retaining Assembly | Stainless | Stainless | Stainless |
| 32 | Key | Stainless | Stainless | Stainless |
| 38 | O-Ring, Shaft | Buna | Buna | Buna |
| 40 | Flinger | Stainless | Stainless | Stainless |
| 71 | Adapter | Iron | Iron | Iron |
| 73 | Gasket, Case | Fiber | Fiber | Fiber |
| 89 | Mechanical Seal, Type 21 BN-CM | Standard | Standard | Standard |
| 89A | Seal Retainer | Stainless | Stainless | Stainless |
| H | Plug, Drain | Brass | Brass | Plated Steel |