



482 Series EGB End Gun Booster Pumps

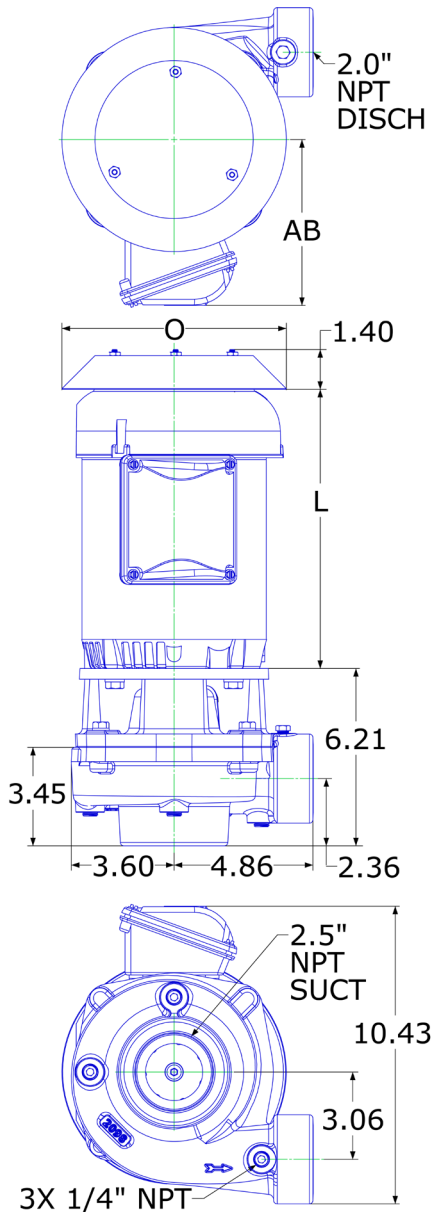
Engineering Specification

3500 RPM
Iron, 60 Hz, 2.50 X 2.00 X 4.50 NPT

EGB 482
 J56

Pump

- Space-saving design:
Vertical mount minimizes overall foot print
- Premium efficiency:
Higher flow rates with less horsepower required
- Rugged Cast Iron components
- Mechanical Seals:
Standard: Buna-Carbon head/Ceramic seat
Optional: Viton-Carbon head/Silicon Carbide seat
Viton-Silicon Carbide head/Silicon Carbide seat



Motor

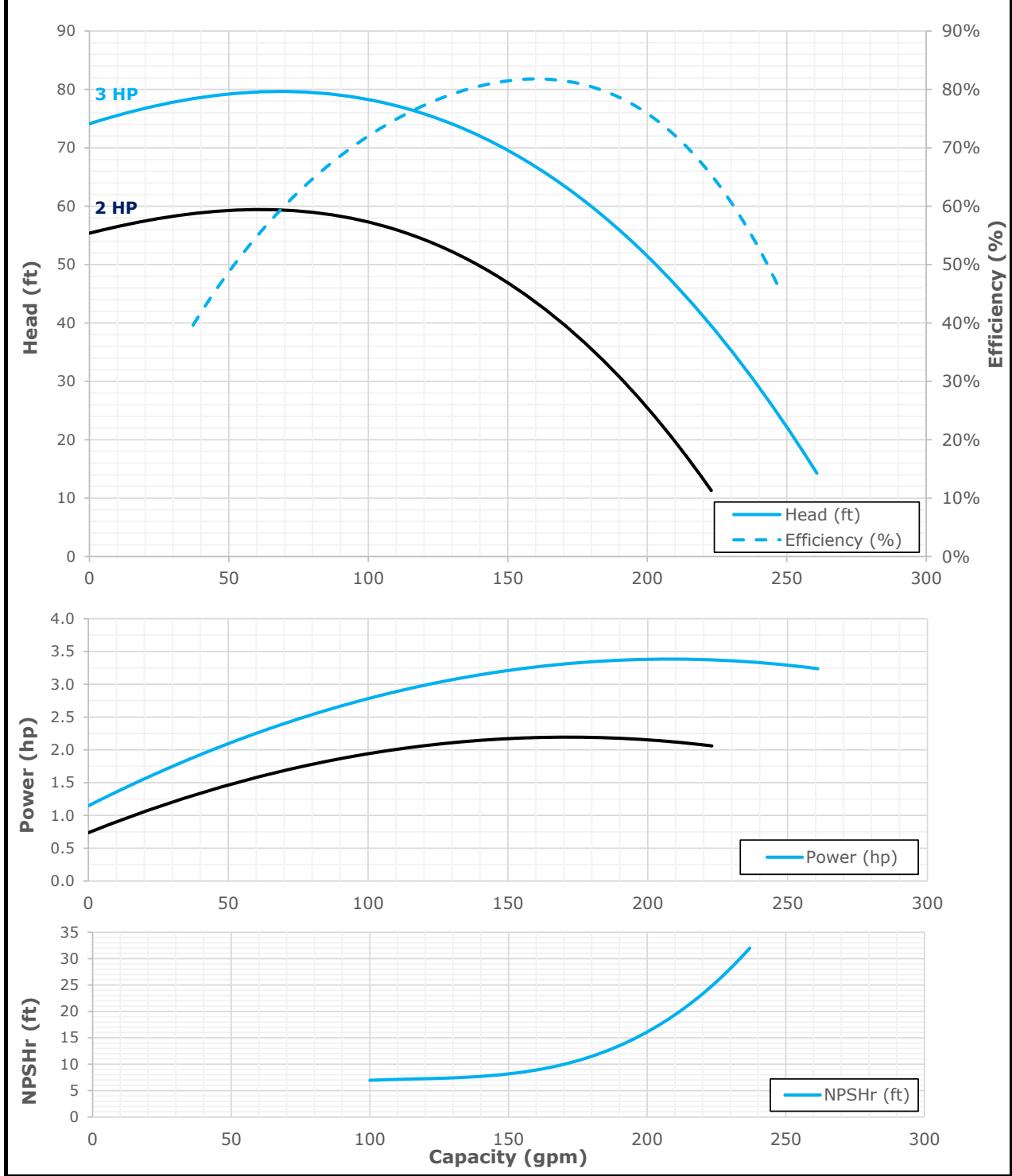
- Economical 56J frame motor design. Impeller is threaded onto motor shaft and secured with a stainless locking nut.
- Motor Enclosure: Totally Enclosed Fan Cooled (TEFC), IP 56
- Motor Voltages: 3/60/230/460V
- Double-sealed bearings

Motor Dimensions				
NEMA J56 Frame 3500 RPM				
HP	Type	3 Phase		
		L	O	AB
2.0	TEFC	11.10	6.19	5.10
3.0	TEFC	15.58	8.63	6.60

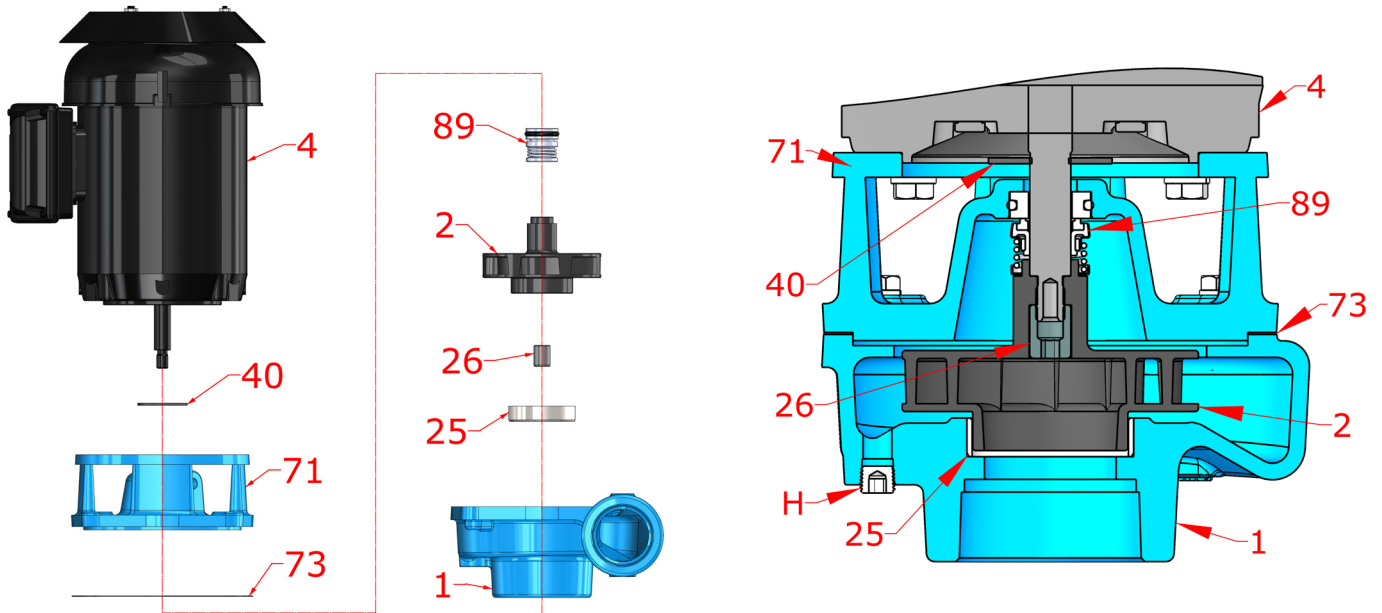
Motors are Premium Efficient

Performance Curve

Performance Curve	Pump 482	1.00	S.G.	Imp. Type: Enclosed	3500	RPM	Max Sphere: 5/16"
Number: 40.000.799	2.5 X 2.0 X 4.5	70.0	°F	12/6/2022	60	Hz	PEI _{CL} 0.88



Parts

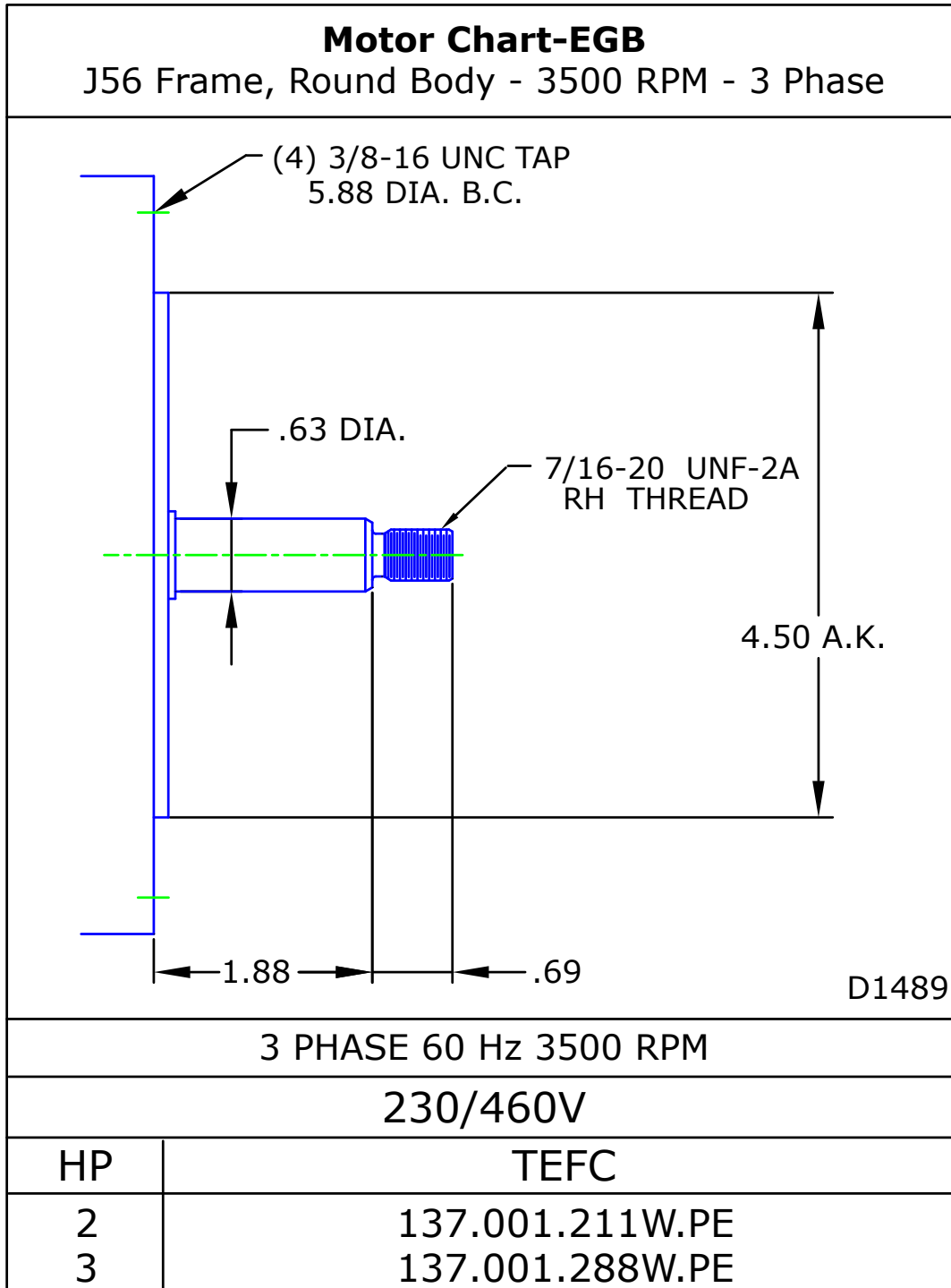


Exploded View

Sectional View

Key	Part Name	Part Number
1	Case 482, Iron, 2.5 X 2 NPT, Steel plugs	3301444
2	Impeller 482, Iron, Specify Dia, 4.50 Max, 7/16 Thrd	3301440
4	Motor chart, J56 Round Body	See Chart
25	Wear Ring, Case, Stainless	3301438
26	Locknut, Stainless, Socket Head	110.000.190
40	Flinger, Neoprene	104.000.171
71	Adapter, Iron, J56, 5/8" Seal, with steel plug	3301442
73	Gasket, Case, Nobestos	3301437
89	Seal, 5/8", Type 6, BN-CARB/CM, no retainer	101.000.110
	Seal, 5/8", Type 21, VN-CARB/CM, with retainer	101.000.103
	Seal, 5/8", Type 21, VN-SIL/SIL, with retainer	101.000.239

Motor Charts



American-Marsh Pumps

T +1 901-860-2300
F +1 901-860-2323

www.american-marsh.com
amp.cs@wilo.com

