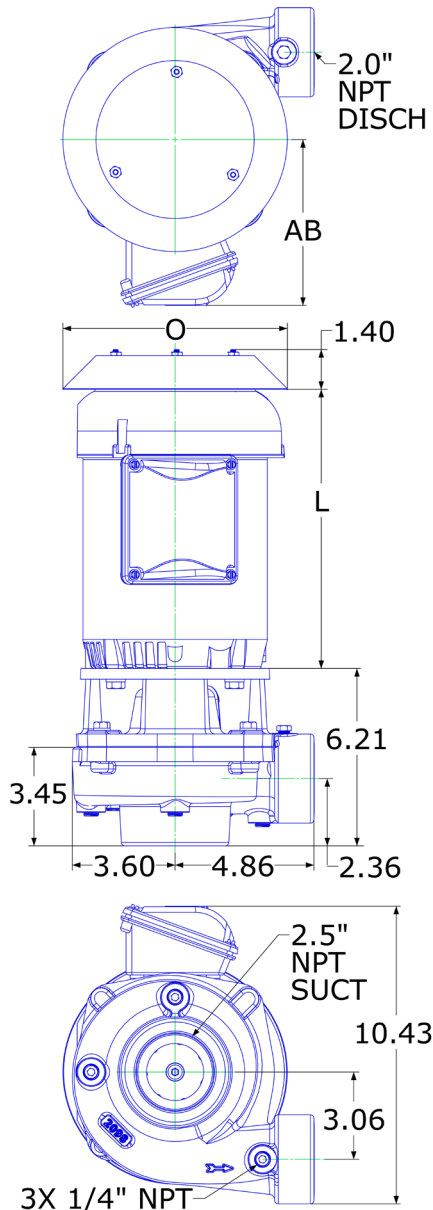


Pump

- Space-saving design:
Vertical mount minimizes overall foot print
- Premium efficiency:
Higher flow rates with less horsepower required
- Rugged cast iron components
- Mechanical Seals:
Standard:
Buna-Carbon head/Ceramic seat
Optional:
Viton-Carbon head/Silicon Carbide seat
Viton-Silicon Carbide head/Silicon Carbide seat



Motor

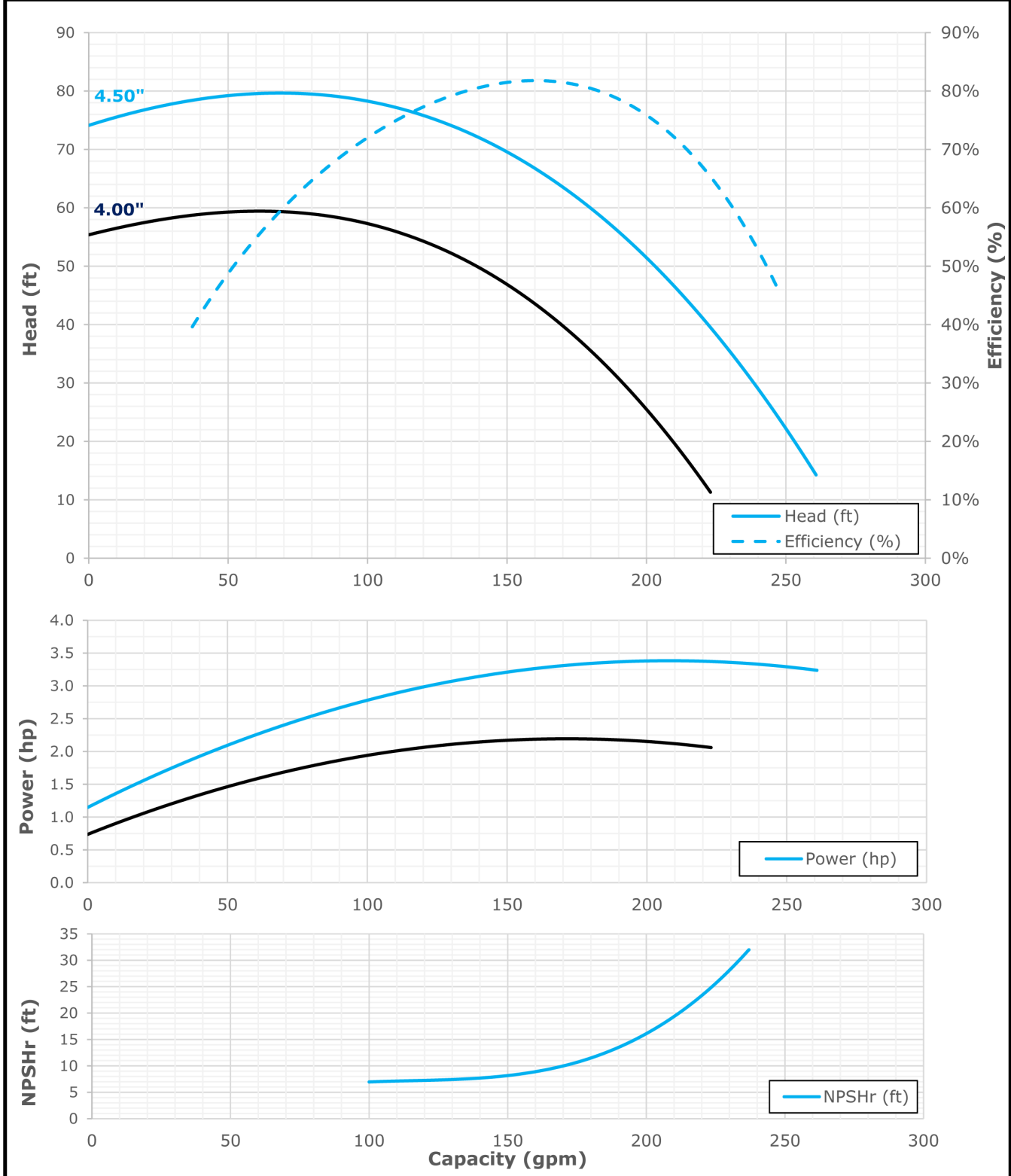
- Economical 56J frame motor design. Impeller is threaded onto motor shaft and secured with a stainless locking nut.
- Motor Enclosure:
Totally Enclosed Fan Cooled (TEFC), IP 56
- Motor Voltages:
3/60/230/460V
- Double-sealed bearings

Motor Dimensions				
NEMA J56 Frame 3500 RPM				
HP	Type	3 Phase		
		L	O	AB
2.0	TEFC	11.10	6.19	5.10
3.0	TEFC	15.58	8.63	6.60

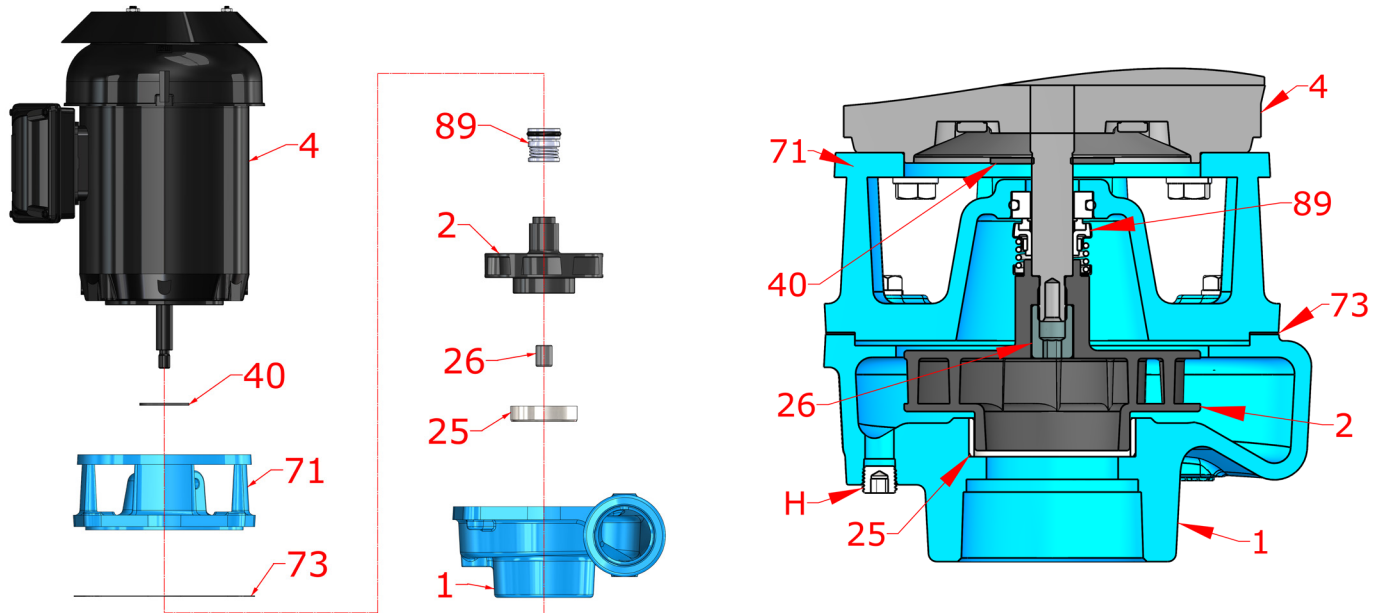
Motors are Premium Efficient

Performance Curve

Performance Curve Number: 40.000.799	Pump 482 2.5 X 2.0 X 4.5	1.00 70.0 °F	S.G. °F	Imp. Type: Enclosed 12/6/2022	3500 RPM 60 Hz	Max Sphere: 5/16" PEI _{CL}	0.88
--------------------------------------	------------------------------------	-----------------	------------	----------------------------------	-------------------	----------------------------------------	------



Parts



Exploded View

Sectional View

Key	Part Name	Part Number
1	Case 482, Iron, 2.5 X 2 NPT, Steel plugs	3301444
2	Impeller 482, Iron, Specify Dia, 4.50 Max, 7/16 Thrd	3301440
4	Motor chart, J56 Round Body	See Chart
25	Wear Ring, Case, Stainless	3301438
26	Locknut, Stainless, Socket Head	110.000.190
40	Flinger, Neoprene	104.000.171
71	Adapter, Iron, J56, 5/8" Seal, with steel plug	3301442
73	Gasket, Case, Nobestos	3301437
89	Seal, 5/8", Type 6, BN-CARB/CM, no retainer	101.000.110
	Seal, 5/8", Type 21, VN-CARB/CM, with retainer	101.000.103
	Seal, 5/8", Type 21, VN-SIL/SIL, with retainer	101.000.239

Motor Charts

