

SOLUTIONS

for Smart Urban Areas

Commercial & Institution



Housing & Living



wilo

GROWING SMART

Urbanisation will advance rapidly in the coming decades. More and more people will move from the country to the city. City infrastructure will be tested to its limits. At the same time, climate change is necessitating a fundamental realignment to CO₂-neutral energy management.

In order to meet these challenges while making the cities of the future fit places to live, people around the world are coming up with intelligent, digital concepts for cities: Smart Urban Areas.

In Smart Urban Areas, urban infrastructure and many areas of life are connected with each other digitally and intelligently. They can be divided into six zones. These zones represent different requirements and functions.

Wilo develops customised, energy-efficient and smart solutions to meet the various challenges.

SMART URBAN ZONES



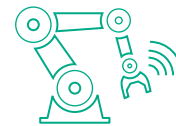
RECREATION



COMMERCIAL
& INSTITUTION



HOUSING & LIVING



INDUSTRY



TRANSPORTATION
& INFRASTRUCTURE



AGRICULTURE



COMMERCIAL & INSTITUTION HOUSING & LIVING

These zones cover different building types – from skyscrapers and malls to universities, hotel complexes and detached houses. The Commercial and Institution Zone comprises buildings that are used primarily for commercial purposes. Growing cities mean increasing complexity in facility management and new requirements in terms of connectivity. The Housing & Living Zone covers the living spaces in a city and is shaped in particular by the need for comfort and personalization. For many people, the home is a welcome retreat from an increasingly hectic world.

Digital developments like artificial intelligence and smart, connective products will control buildings efficiently and sustainably, making a positive contribution to urban development – also in terms of energy efficiency and CO2 prevention. Wilo ensures outstanding quality by meeting the highest standards and is the right partner for a sustainable future.

ALVEAR TOWER

ARGENTINA, BUENOS AIRES

HVAC, Water Supply, Drainage & Sewage



HAEUNDAE DOOSAN

WE'VE THE ZENITH

SOUTH KOREA, BUSAN

Water Supply



UNITE STUDENTS

UNITED KINGDOM, LONDON

Water Supply



AL-GALALA CITY

EGYPT, GALALA

Water Supply



ROTANA HOTEL

JORDAN, AMMAN

HVAC, Water Supply



ALOFT HOTEL

USA, NEW YORK

HVAC, Water Supply



CHALET DES NEIGES

FRANCE, TOURS EN SAVOIE

HVAC



WARSAW SPIRE

POLAND, WARSAW

Water Supply



LVM – CRYSTAL GERMANY, MÜNSTER

HVAC, Drainage & Sewage



CENTRAL BANK IRELAND, DUBLIN

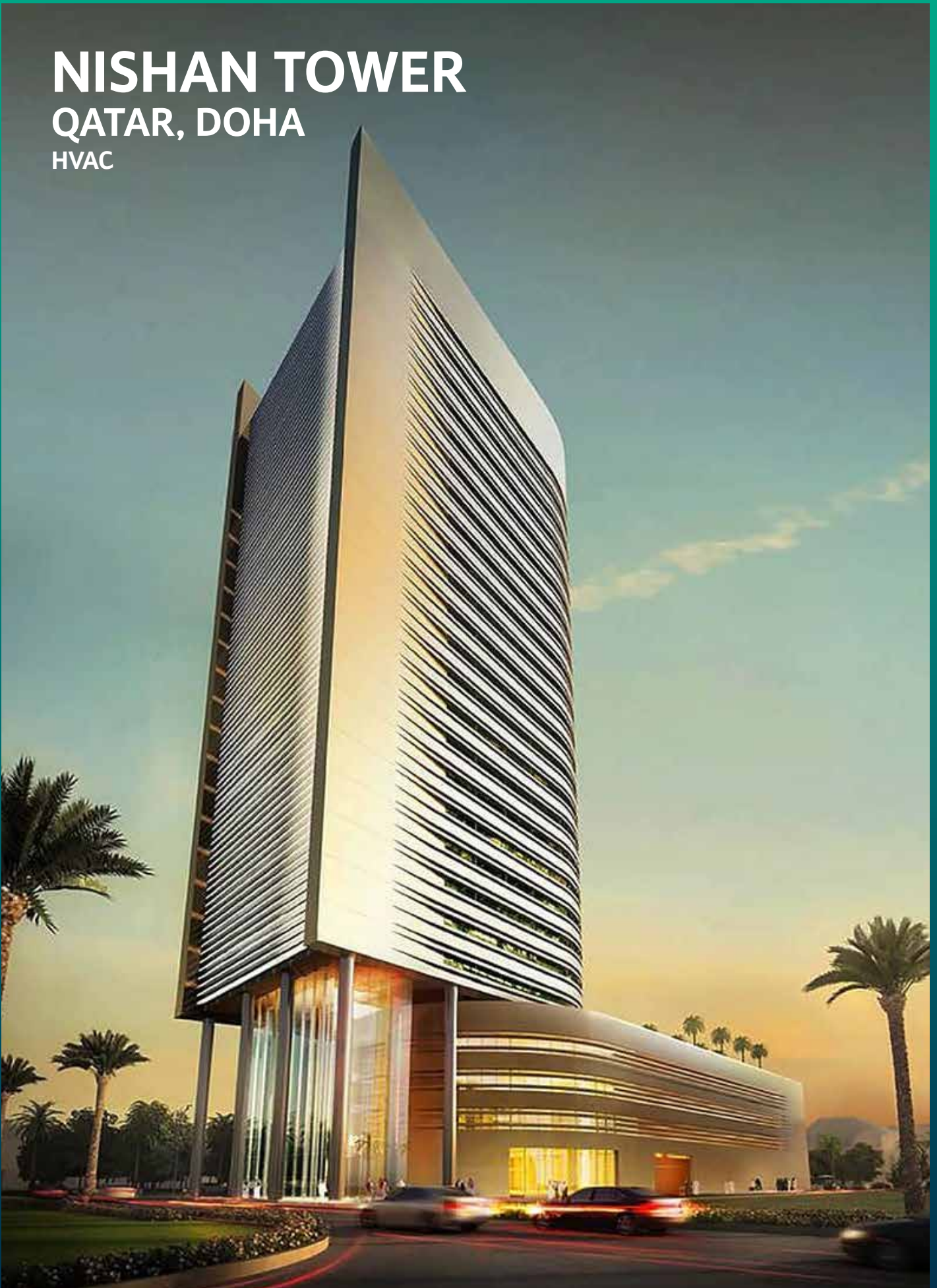
HVAC, Water Supply



NISHAN TOWER

QATAR, DOHA

HVAC





EMERALD QUARTERS

KAZAHKSTAN, NUR-SULTAN

Water Supply



COSTANERA CENTRE

CHILE, SANTIAGO DE CHILE

HVAC



GUANGZHOU INTERNATIONAL FINANCIAL CENTER

CHINA, GUANGZHOU
HVAC, Water Supply



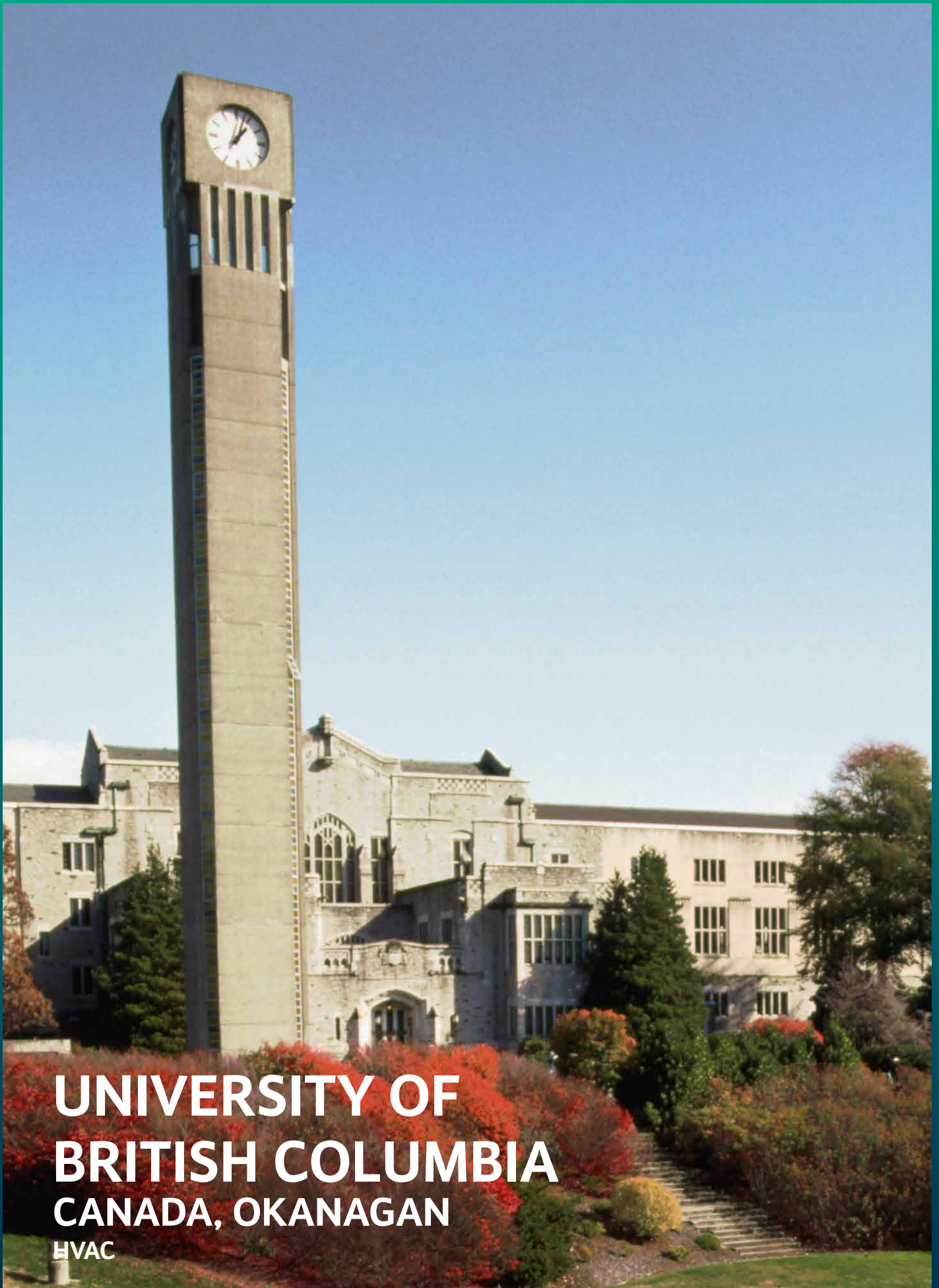
BURJ CROWN TOWER

UAE, DUBAI
HVAC

SHENZHEN PING AN FINANCIAL CENTER CHINA, SHENZHEN

Water Supply





UNIVERSITY OF BRITISH COLUMBIA CANADA, OKANAGAN

HVAC

EMAAR MALL

TURKEY, ISTANBUL

HVAC, Water Supply



MALL OF AFRICA

SOUTH AFRICA, MIDRAND

Water Supply





Wilo-Stratos MAXO

Smart wet runner pump for heating, cooling, air-conditioning

- Highest system efficiency
- Fully integrated connectivity
- Best networking capabilities
- Intelligent control functions
- Online access



Wilo-Stratos GIGA2.0

Smart dry runner pump for heating, cooling, air-conditioning

- Bluetooth interface and remote access option
- Application-guided setting assistant
- Optimum energy efficiency
- IE5 EC motor technology



Wilo-Helix2.0-VE

Multistage centrifugal pump for pressure boosting

- Quick maintenance
- Optimized design for easy operation
- Communication with BMS
- Lower life cycle costs

PIONEERING FOR SMART SOLUTIONS

Wilo produces pumps that guarantee maximum reliability, flexibility and efficiency. Our key services are positioned in the sectors of Water Management, Building Services and Industry.

We provide solutions for all scenes of the arena: heating or cooling of the facilities, water supply for the green and the sanitary facilities as well as wastewater treatment and transport within the entertainment areas.

That is why customers from all over the world trust in smart Wilo solutions.



Wilo-Actun ZETOS-K10

Submersible pump for raw water intake

- Maximum energy savings
- Compatible to control systems
- Demand-oriented system control
- Online access to run signals



Wilo-Rexa SOLID-Q

Submersible sewage pump for smart sewage pumping stations

- Maximum operational reliability and reduced service costs
- Lower energy costs
- Corrosion protection provided by an optional Ceram coating
- Optional Digital Data Interface (DDI) with integrated vibration monitoring, data logger, web server and digital rating plate



Wilo-EMUport CORE

Solid separations system for sewage collection and transport

- Maximum operational safety
- Cost-effective and energy savings
- Durable and corrosion-free
- Flexible installation and easy to integrate



ABOUT WILO

The Wilo Group is one of the **world's leading premium providers** of pumps and pump systems for the building services, water management and industrial sectors. In the past decade, we have developed from a hidden champion into a visible and connected champion. Today, Wilo has around 8,200 employees worldwide.

Our innovative solutions, smart products and individual services move water in an **intelligent, efficient and climate-friendly** manner. We are also making an important contribution to climate protection with our sustainability strategy and in conjunction with our partners. We are systematically pressing ahead with the digital transformation of the Group. We are already the digital pioneer in the industry with our products and solutions, processes and business models.



wilo

Pioneering for You

WILO SE

Wilopark 1
44263 Dortmund

T +49 231 4102-0

F +49 231 4102-7363

www.wilo.com