

SOLUTIONS

for Smart Urban Areas

Industry



wilo

GROWING SMART

Urbanisation will advance rapidly in the coming decades. More and more people will move from the country to the city. City infrastructure will be tested to its limits. At the same time, climate change is necessitating a fundamental realignment to CO₂-neutral energy management.

In order to meet these challenges while making the cities of the future fit places to live, people around the world are coming up with intelligent, digital concepts for cities: Smart Urban Areas.

In Smart Urban Areas, urban infrastructure and many areas of life are connected with each other digitally and intelligently. They can be divided into six zones. These zones represent different requirements and functions.

Wilo develops customised, energy-efficient and smart solutions to meet the various challenges.

SMART URBAN ZONES



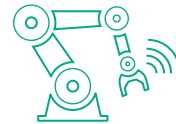
RECREATION



COMMERCIAL
& INSTITUTION



HOUSING & LIVING



INDUSTRY



TRANSPORTATION
& INFRASTRUCTURE



AGRICULTURE



INDUSTRY

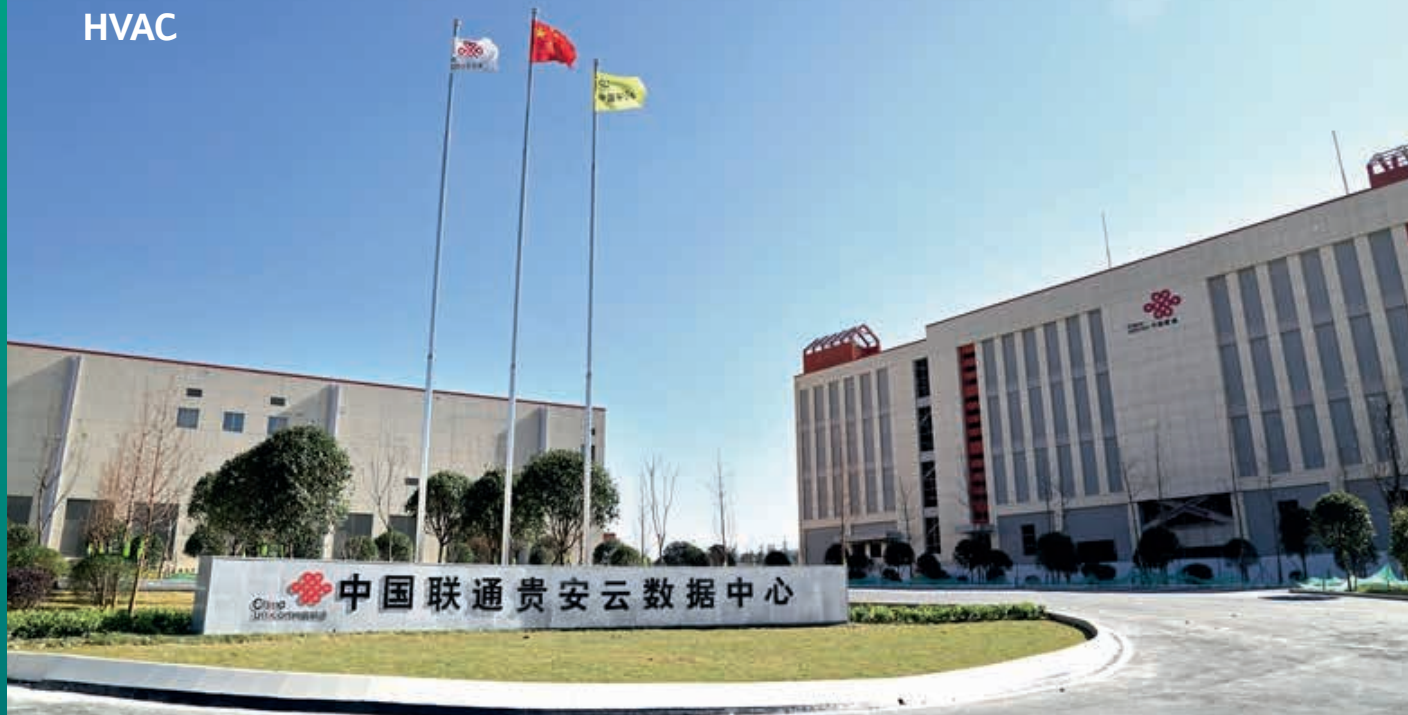
In industry, material quality and compliance with standards are key aspects alongside operational reliability and energy efficiency. As working and living space increasingly grow together, production is facing new challenges in terms of operational reliability and comfort. Processes are becoming more complex and the requirements in terms of material quality are rising, while sustainability, emissions and energy efficiency are also growing in importance.

As a partner to industrial companies, we are addressing these more stringent requirements. With the highest quality standards for its own products, Wilo offers the right systems for a wide range of industrial applications – highly efficient, long-lasting and reliable. Wilo also offers numerous products with stainless steel finishes or special coatings for use in particularly challenging environments and under high strain.

UNICOM DATA CENTRE

GUIZHOU, CHINA

HVAC



ZHONGHUAN SUN POWER

HUHHOT, CHINA

Drainage & Sewage





SUMGAIT TECHNOLOGIES DATA CENTER

BAKU, AZERBAIJAN
HVAC, Water Supply, Drainage & Sewage



SANGAM DATA CENTER

South Korea, Seoul
HVAC, Water Supply, Drainage & Sewage



DATEV CAMPUS

NUREMBERG, GERMANY

HVAC



WAFER FAB

Dresden, Germany

Water Supply

GOOGLE DATACENTRE

HAMINA, FINNLAND

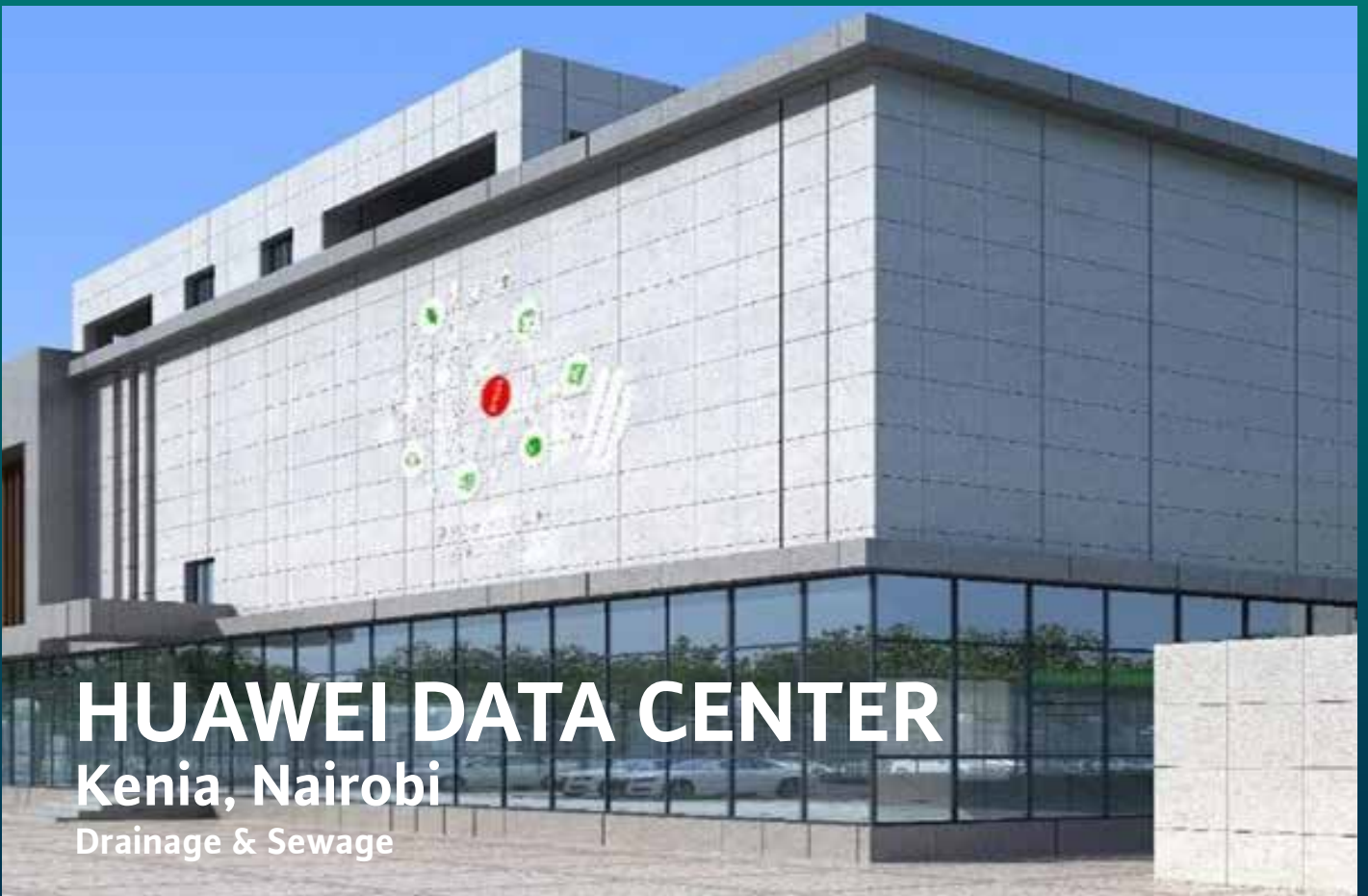
HVAC



HUAWEI DATA CENTER

Kenia, Nairobi

Drainage & Sewage



KAZZINC PLANT

UST-KAMENOGORSK, KAZAHKSTAN

Water Supply



WILOPARK

Dortmund, Germany

HVAC, Water Supply, Drainage & Sewage





ENSCO JACK UP RIG

ARABIAN GULF, UAE

Water Supply





PLATREEF MINE

MOKOPANE, SOUTH AFRICA

Drainage & Sewage



Wilo-Stratos MAXO

Smart wet runner pump for heating, cooling, air-conditioning

- Highest system efficiency
- Fully integrated connectivity
- Best networking capabilities
- Intelligent control functions
- Online access



Wilo-Stratos GIGA2.0

Smart dry runner pump for heating, cooling, air-conditioning

- Bluetooth interface and remote access option
- Application-guided setting assistant
- Optimum energy efficiency
- IE5 EC motor technology



Wilo-Helix2.0-VE

Multistage centrifugal pump for pressure boosting

- Quick maintenance
- Optimized design for easy operation
- Communication with BMS
- Lower life cycle costs

PIONEERING FOR SMART SOLUTIONS

Wilo produces pumps that guarantee maximum reliability, flexibility and efficiency. Our key services are positioned in the sectors of Water Management, Building Services and Industry.

We provide solutions for all scenes of the arena: heating or cooling of the facilities, water supply for the green and the sanitary facilities as well as wastewater treatment and transport within the entertainment areas.

That is why customers from all over the world trust in smart Wilo solutions.



Wilo-Actun ZETOS-K10

Submersible pump for raw water intake

- Maximum energy savings
- Compatible to control systems
- Demand-oriented system control
- Online access to run signals



Wilo-Rexa SOLID-Q

Submersible sewage pump for smart sewage pumping stations

- Maximum operational reliability and reduced service costs
- Lower energy costs
- Corrosion protection provided by an optional Ceram coating
- Optional Digital Data Interface (DDI) with integrated vibration monitoring, data logger, web server and digital rating plate



Wilo-EMUport CORE

Solid separations system for sewage collection and transport

- Maximum operational safety
- Cost-effective and energy savings
- Durable and corrosion-free
- Flexible installation and easy to integrate



ABOUT WILO

The Wilo Group is one of the **world's leading premium providers** of pumps and pump systems for the building services, water management and industrial sectors. In the past decade, we have developed from a hidden champion into a visible and connected champion. Today, Wilo has around 8,200 employees worldwide.

Our innovative solutions, smart products and individual services move water in an **intelligent, efficient and climate-friendly** manner. We are also making an important contribution to climate protection with our sustainability strategy and in conjunction with our partners. We are systematically pressing ahead with the digital transformation of the Group. We are already the digital pioneer in the industry with our products and solutions, processes and business models.



wilo

Pioneering for You

WILO SE

Wilopark 1
44263 Dortmund

T +49 231 4102-0

F +49 231 4102-7363

www.wilo.com