

Submittal Data Sheet

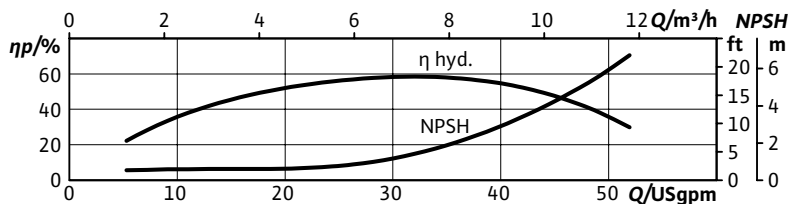
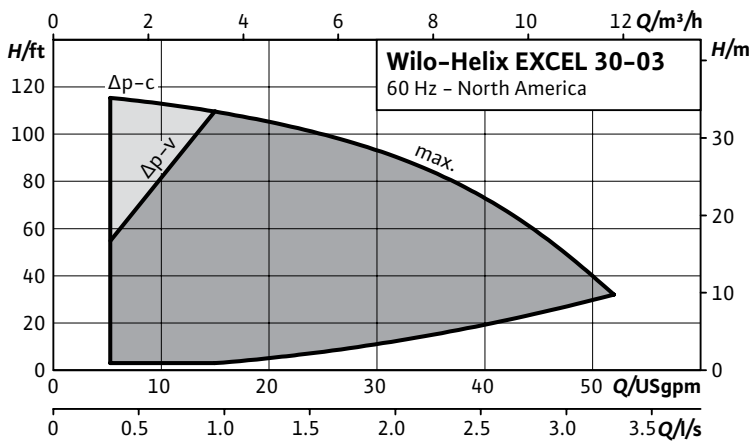
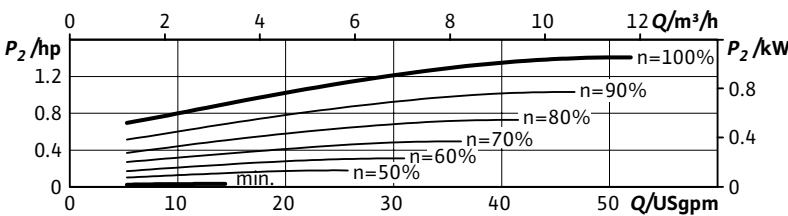
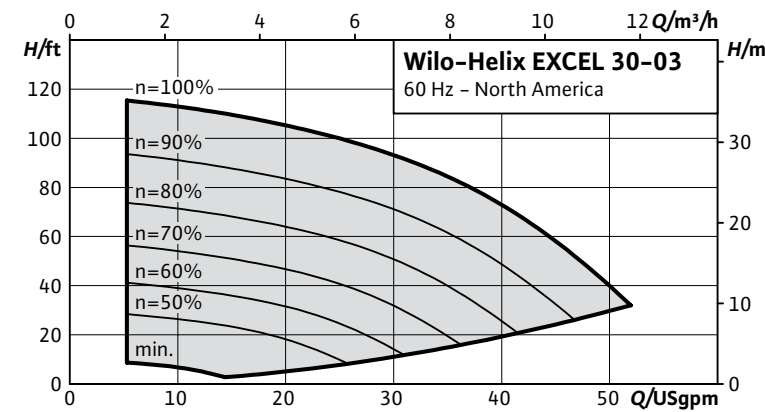
Multistage Pumps

Wilo-Helix EXCEL



| | | | | | | | | |
|---------------|--|--|--|--|-------|--|--|--|
| Project: | | | | | | | | |
| Engineer: | | | | | | | | |
| Contractor: | | | | | | | | |
| Submitted By: | | | | | Date: | | | |
| Approved By: | | | | | Date: | | | |

| Tag # | Model # | Flow | Head | Volute | Control Mode | HP | Phase | Voltage |
|-------|-------------------|------|------|--------|--------------|-----|-------|---------|
| | Helix EXCEL 30-03 | | | | | 1.5 | 3 | 460 |



Product Info

| | |
|---------------------|-------------|
| Brand | Wilo |
| Product Description | Helix Excel |

Technical Data

| | |
|------------------------|-------------------------------------|
| PEI | 0.94 |
| Liquid Temp Range | -22°F to 284°F (-30°C to +120°C) |
| Fluid Compatibility | Water, up to 50/50 Water-Glycol |
| Max Operating Pressure | 232.1/362.6 PSI |
| Mains Voltage | 460V (±10%) 60Hz |
| Protection Class | IP 55, Class F Insulation |
| Ambient Temp Range | 5°F to 104°F (-15°C to 40°C) |
| Ambient Humidity | < 90% without condensation |

Materials of Construction

| | | |
|--|---------------------------------|---------------------------------|
| Pump Volute | AISI 304L* | AISI 316L |
| Mechanical Seal | EPDM | FKM |
| Impellers Stage Housings Diffusers | AISI 304L | AISI 316L |
| Shaft | AISI 304L / AISI 318 LN | AISI 316L / AISI 318LN |
| O-ring for mechanical seal | EPDM (FKM gasket on request) | EPDM (FKM gasket on request) |
| Sleeve under the mechanical seal | AISI 316L | AISI 316L |

*304 pump volutes are NSF 61 certified

IR Module Selection

| Select | Module |
|--------|----------------------|
| | BACnet / Dual Pump |
| | LONworks / Dual Pump |
| | MODBUS |
| | None |

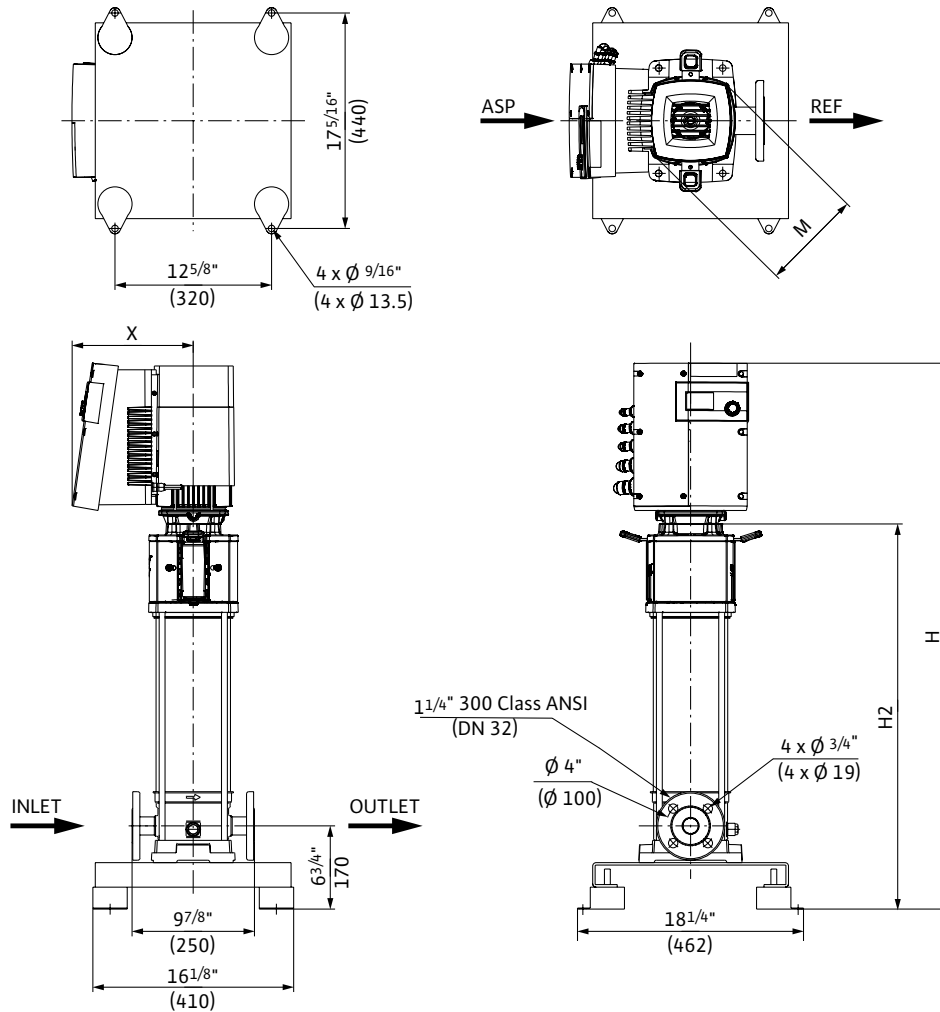
Applications

| | |
|------------------|-------------------|
| Water Supply | Pressure Boosting |
| Boiler Feed | Cooling Systems |
| Pressure Washing | Irrigation |

Submittal Data Sheet

Multistage Pumps

Wilo-Helix EXCEL

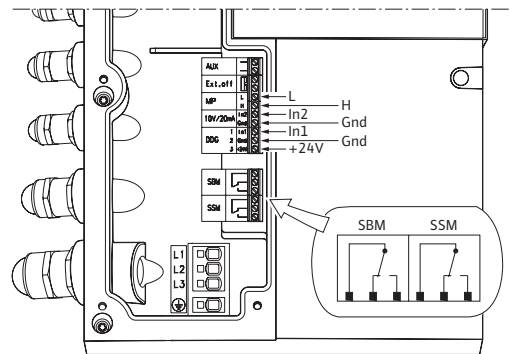


Dimensions and Weights

| Model | Dimensions - Inches (mm) | | | | Weight lbs (kg) |
|-------------------|--------------------------|----------|-------|-------|-----------------|
| | H | H2 | ØM | X | |
| Helix EXCEL 30-03 | 34 3/4 | 21 13/16 | 8 3/8 | 9 3/4 | 108.0 |
| | (882) | (554) | (206) | (248) | (49) |

EC Motor Data (Single Motor Operation)

| Model | P ₂ Rated | Phase | Voltage | FLA | Efficiency |
|-------------------|----------------------|-------|------------|------|---------------------|
| | hp | [~] | [V] | [A] | η _m 100% |
| Helix EXCEL 30-03 | 1.5 | 3 | 460 (±10%) | 1.76 | 92.00 |



Submittal Data Sheet

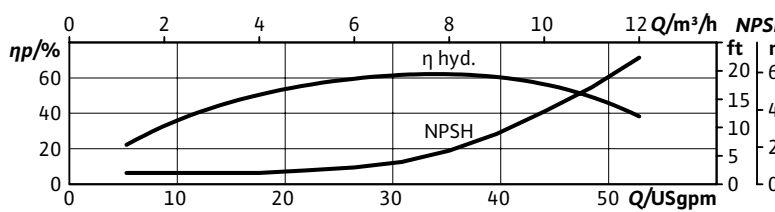
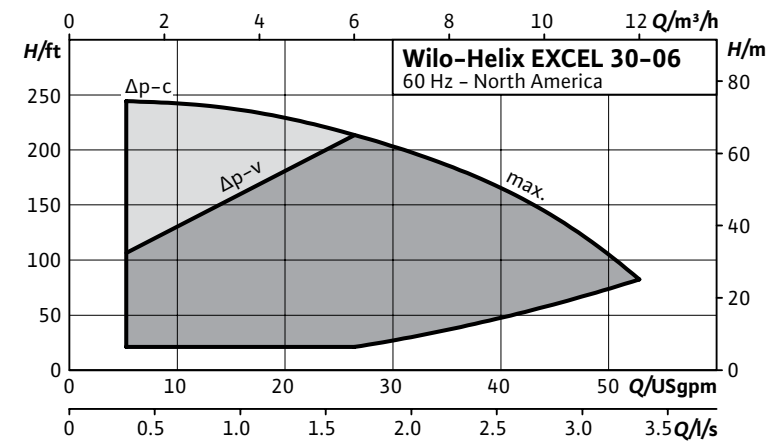
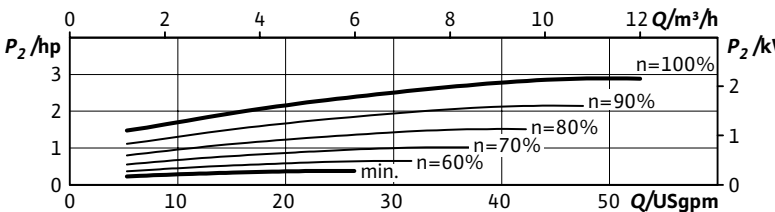
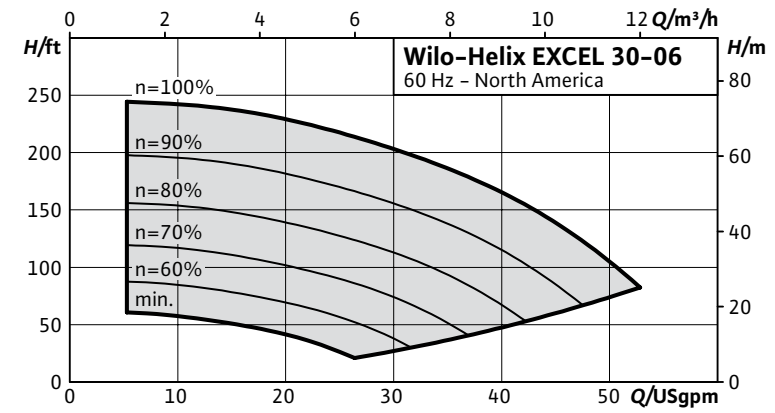
Multistage Pumps

Wilo-Helix EXCEL



| | | | |
|---------------|--|--|-------|
| Project: | | | |
| Engineer: | | | |
| Contractor: | | | |
| Submitted By: | | | Date: |
| Approved By: | | | Date: |

| Tag # | Model # | Flow | Head | Volute | Control Mode | HP | Phase | Voltage |
|-------|-------------------|------|------|--------|--------------|----|-------|---------|
| | Helix EXCEL 30-06 | | | | | 3 | 3 | 460 |



Product Info

| | |
|---------------------|-------------|
| Brand | Wilo |
| Product Description | Helix Excel |

Technical Data

| | |
|------------------------|----------------------------------|
| PEI | 0.62 |
| Liquid Temp Range | -22°F to 284°F (-30°C to +120°C) |
| Fluid Compatibility | Water, up to 50/50 Water-Glycol |
| Max Operating Pressure | 232.1/362.6 PSI |
| Mains Voltage | 460V (±10%) 60Hz |
| Protection Class | IP 55, Class F Insulation |
| Ambient Temp Range | 5°F to 104°F (-15°C to 40°C) |
| Ambient Humidity | < 90% without condensation |

Materials of Construction

| | | |
|--|---------------------------------|---------------------------------|
| Pump Volute | AISI 304L* | AISI 316L |
| Mechanical Seal | EPDM | FKM |
| Impellers Stage Housings Diffusers | AISI 304L | AISI 316L |
| Shaft | AISI 304L / AISI 318 LN | AISI 316L / AISI 318LN |
| O-ring for mechanical seal | EPDM (FKM gasket on request) | EPDM (FKM gasket on request) |
| Sleeve under the mechanical seal | AISI 316L | AISI 316L |

*304 pump volutes are NSF 61 certified

IR Module Selection

| Select | Module |
|--------|----------------------|
| | BACnet / Dual Pump |
| | LONworks / Dual Pump |
| | MODBus |
| | None |

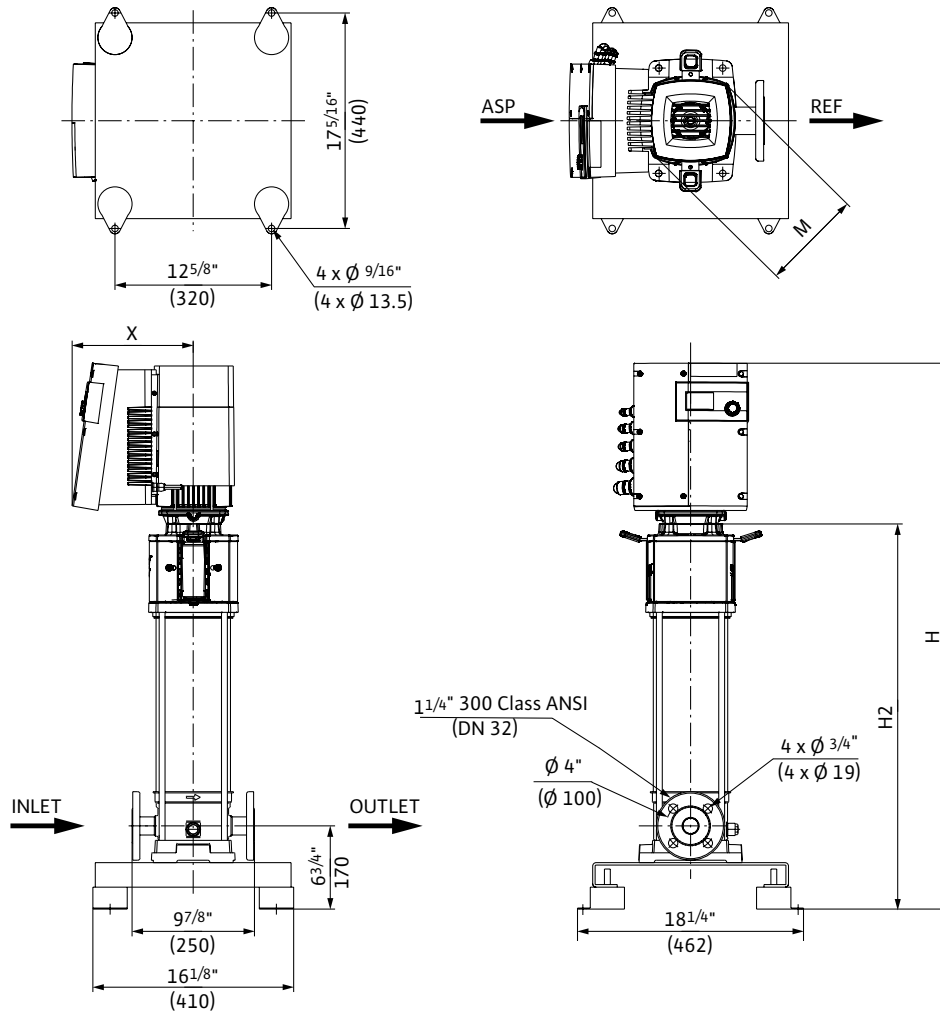
Applications

| | |
|------------------|-------------------|
| Water Supply | Pressure Boosting |
| Boiler Feed | Cooling Systems |
| Pressure Washing | Irrigation |

Submittal Data Sheet

Multistage Pumps

Wilo-Helix EXCEL

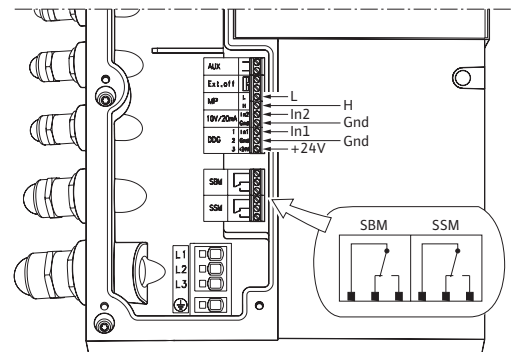


Dimensions and Weights

| Model | Dimensions - Inches (mm) | | | | Weight lbs (kg) |
|-------------------|--------------------------|-----------------|----------------|----------------|--------------------|
| | H | H2 | ϕM | X | |
| Helix EXCEL 30-06 | $39\frac{1}{2}$ | $26\frac{5}{8}$ | $8\frac{3}{8}$ | $9\frac{3}{4}$ | 117.9 |
| | (1004) | (676) | (206) | (248) | (53.5) |

EC Motor Data (Single Motor Operation)

| Model | P_2 Rated | Phase | Voltage | FLA | Efficiency |
|-------------------|-------------|-------|-----------------------|-----|---------------|
| | hp | [~] | [V] | [A] | η_m 100% |
| Helix EXCEL 30-06 | 3.0 | 3 | 460 ($\pm 10\%$) | 4.4 | 93.00 |



Submittal Data Sheet

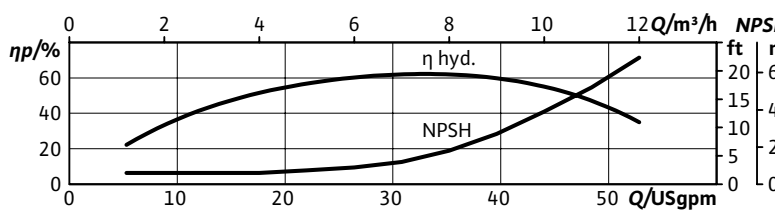
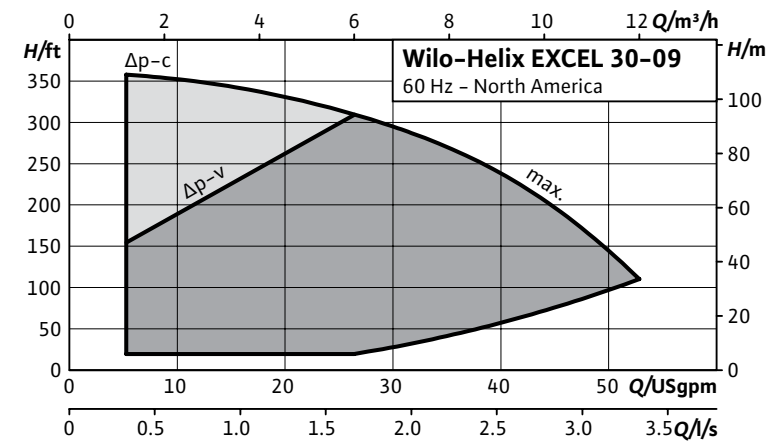
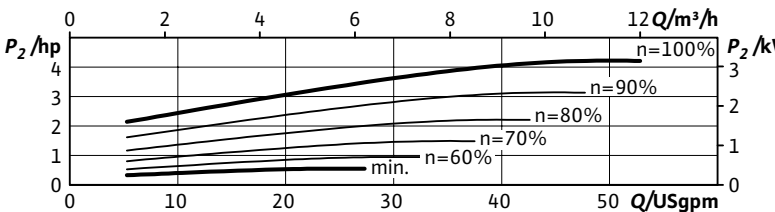
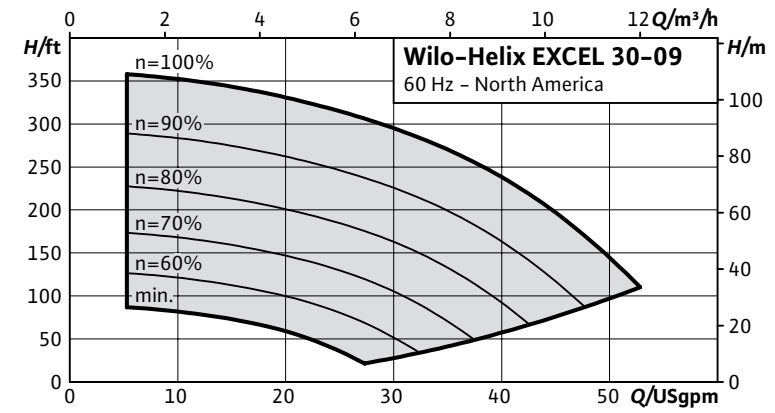
Multistage Pumps

Wilo-Helix EXCEL



| | | | |
|---------------|--|--|-------|
| Project: | | | |
| Engineer: | | | |
| Contractor: | | | |
| Submitted By: | | | Date: |
| Approved By: | | | Date: |

| Tag # | Model # | Flow | Head | Volute | Control Mode | HP | Phase | Voltage |
|-------|-------------------|------|------|--------|--------------|-----|-------|---------|
| | Helix EXCEL 30-09 | | | | | 4.3 | 3 | 460 |



| Product Info | |
|---------------------|-------------|
| Brand | Wilo |
| Product Description | Helix Excel |

| Technical Data | |
|------------------------|----------------------------------|
| PEI | 0.53 |
| Liquid Temp Range | -22°F to 284°F (-30°C to +120°C) |
| Fluid Compatibility | Water, up to 50/50 Water-Glycol |
| Max Operating Pressure | 232.1/362.6 PSI |
| Mains Voltage | 460V (±10%) 60Hz |
| Protection Class | IP 55, Class F Insulation |
| Ambient Temp Range | 5°F to 104°F (-15°C to 40°C) |
| Ambient Humidity | < 90% without condensation |

| Materials of Construction | | |
|--|------------------------------|------------------------------|
| Pump Volute | AISI 304L* | AISI 316L |
| Mechanical Seal | EPDM | FKM |
| Impellers Stage Housings Diffusers | AISI 304L | AISI 316L |
| Shaft | AISI 304L / AISI 318 LN | AISI 316L / AISI 318LN |
| O-ring for mechanical seal | EPDM (FKM gasket on request) | EPDM (FKM gasket on request) |
| Sleeve under the mechanical seal | AISI 316L | AISI 316L |

*304 pump volutes are NSF 61 certified

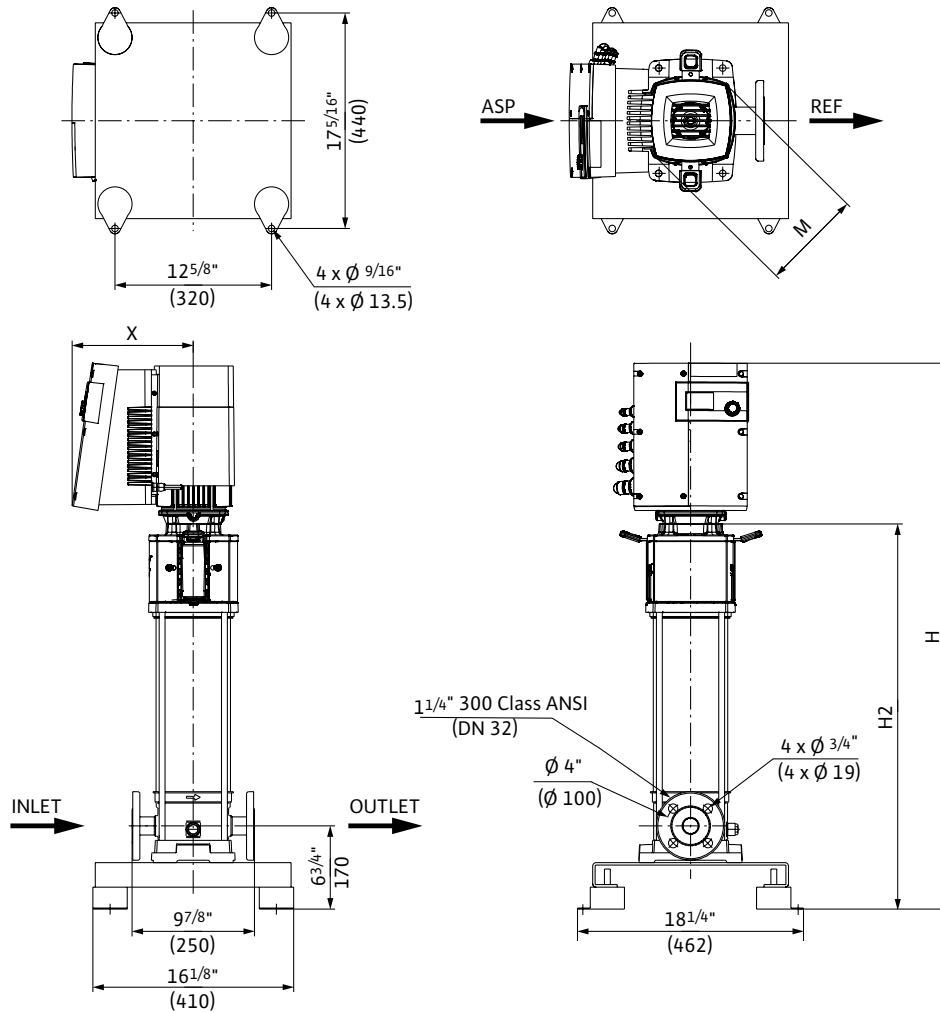
| IR Module Selection | |
|---------------------|----------------------|
| Select | Module |
| | BACnet / Dual Pump |
| | LONworks / Dual Pump |
| | MODBus |
| | None |

| Applications | |
|------------------|-------------------|
| Water Supply | Pressure Boosting |
| Boiler Feed | Cooling Systems |
| Pressure Washing | Irrigation |

Submittal Data Sheet

Multistage Pumps

Wilo-Helix EXCEL

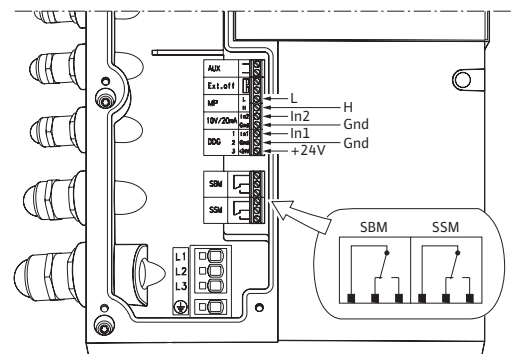


Dimensions and Weights

| Model | Dimensions - Inches (mm) | | | | Weight lbs (kg) |
|-------------------|--------------------------|------------------|----------------|----------------|--------------------|
| | H | H2 | ϕM | X | |
| Helix EXCEL 30-09 | 44 | $31\frac{3}{16}$ | $8\frac{3}{8}$ | $9\frac{3}{4}$ | 125.7 |
| | (1117) | (789) | (206) | (248) | 57 |

EC Motor Data (Single Motor Operation)

| Model | P_2 Rated | Phase | Voltage | FLA | Efficiency |
|-------------------|-------------|-------|-----------------------|-----|---------------|
| | hp | [~] | [V] | [A] | η_m 100% |
| Helix EXCEL 30-09 | 4.3 | 3 | 460 ($\pm 10\%$) | 6.0 | 93.00 |



Submittal Data Sheet

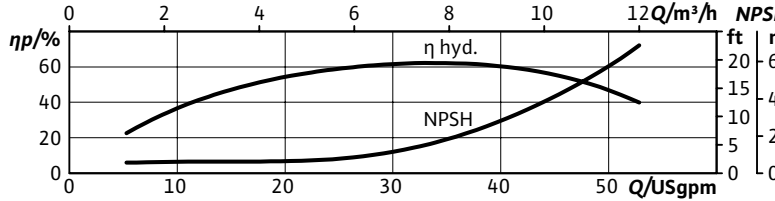
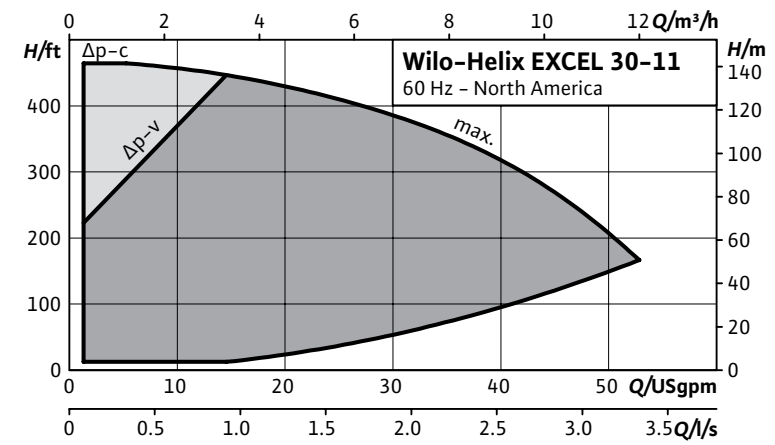
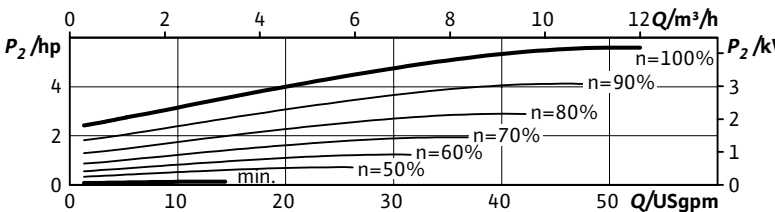
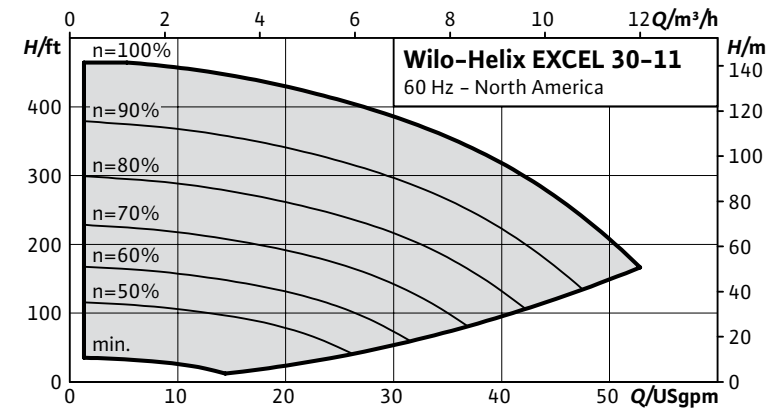
Multistage Pumps

Wilo-Helix EXCEL



| | | | |
|---------------|--|--|-------|
| Project: | | | |
| Engineer: | | | |
| Contractor: | | | |
| Submitted By: | | | Date: |
| Approved By: | | | Date: |

| Tag # | Model # | Flow | Head | Volute | Control Mode | HP | Phase | Voltage |
|-------|-------------------|------|------|--------|--------------|-----|-------|---------|
| | Helix EXCEL 30-11 | | | | | 5.7 | 3 | 460 |



Product Info

| | |
|---------------------|-------------|
| Brand | Wilo |
| Product Description | Helix Excel |

Technical Data

| | |
|------------------------|-------------------------------------|
| PEI | 0.47 |
| Liquid Temp Range | -22°F to 284°F (-30°C to +120°C) |
| Fluid Compatibility | Water, up to 50/50 Water-Glycol |
| Max Operating Pressure | 232.1/362.6 PSI |
| Mains Voltage | 460V (±10%) 60Hz |
| Protection Class | IP 55, Class F Insulation |
| Ambient Temp Range | 5°F to 104°F (-15°C to 40°C) |
| Ambient Humidity | < 90% without condensation |

Materials of Construction

| | | |
|--|---------------------------------|---------------------------------|
| Pump Volute | AISI 304L* | AISI 316L |
| Mechanical Seal | EPDM | FKM |
| Impellers Stage Housings Diffusers | AISI 304L | AISI 316L |
| Shaft | AISI 304L / AISI 318 LN | AISI 316L / AISI 318LN |
| O-ring for mechanical seal | EPDM (FKM gasket on request) | EPDM (FKM gasket on request) |
| Sleeve under the mechanical seal | AISI 316L | AISI 316L |

*304 pump volutes are NSF 61 certified

IR Module Selection

| Select | Module |
|--------|----------------------|
| | BACnet / Dual Pump |
| | LONworks / Dual Pump |
| | MODBUS |
| | None |

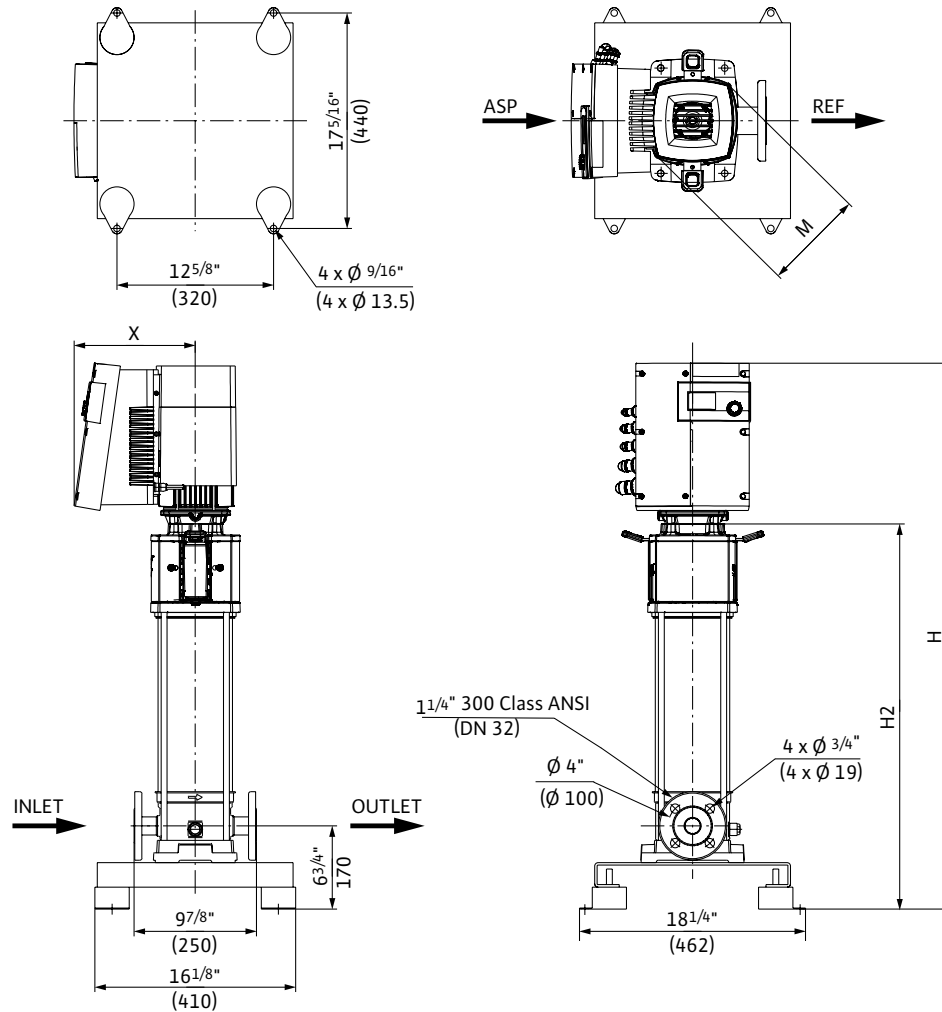
Applications

| | |
|------------------|-------------------|
| Water Supply | Pressure Boosting |
| Boiler Feed | Cooling Systems |
| Pressure Washing | Irrigation |

Submittal Data Sheet

Multistage Pumps

Wilo-Helix EXCEL

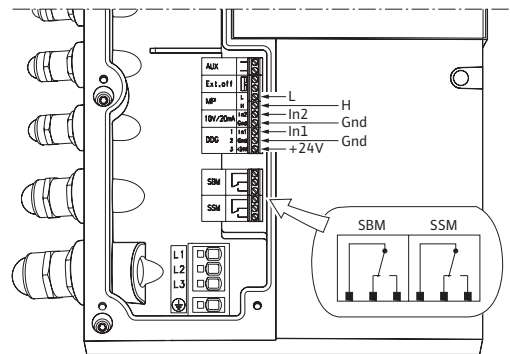


Dimensions and Weights

| Model | Dimensions - Inches (mm) | | | | Weight lbs (kg) |
|-------------------|--------------------------|---------|-------|---------|--------------------|
| | H | H2 | ØM | X | |
| Helix EXCEL 30-11 | 56 3/4 | 40 9/16 | 8 3/4 | 10 9/16 | 160.9 |
| | (1441) | (1031) | (223) | (268) | (73) |

EC Motor Data (Single Motor Operation)

| Model | P ₂ Rated | Phase | Voltage | FLA | Efficiency |
|-------------------|----------------------|-------|---------------|-----|---------------------|
| | hp | [~] | [V] | [A] | η _m 100% |
| Helix EXCEL 30-11 | 5.7 | 3 | 460 (±10%) | 6.5 | 95.8 |



Submittal Data Sheet

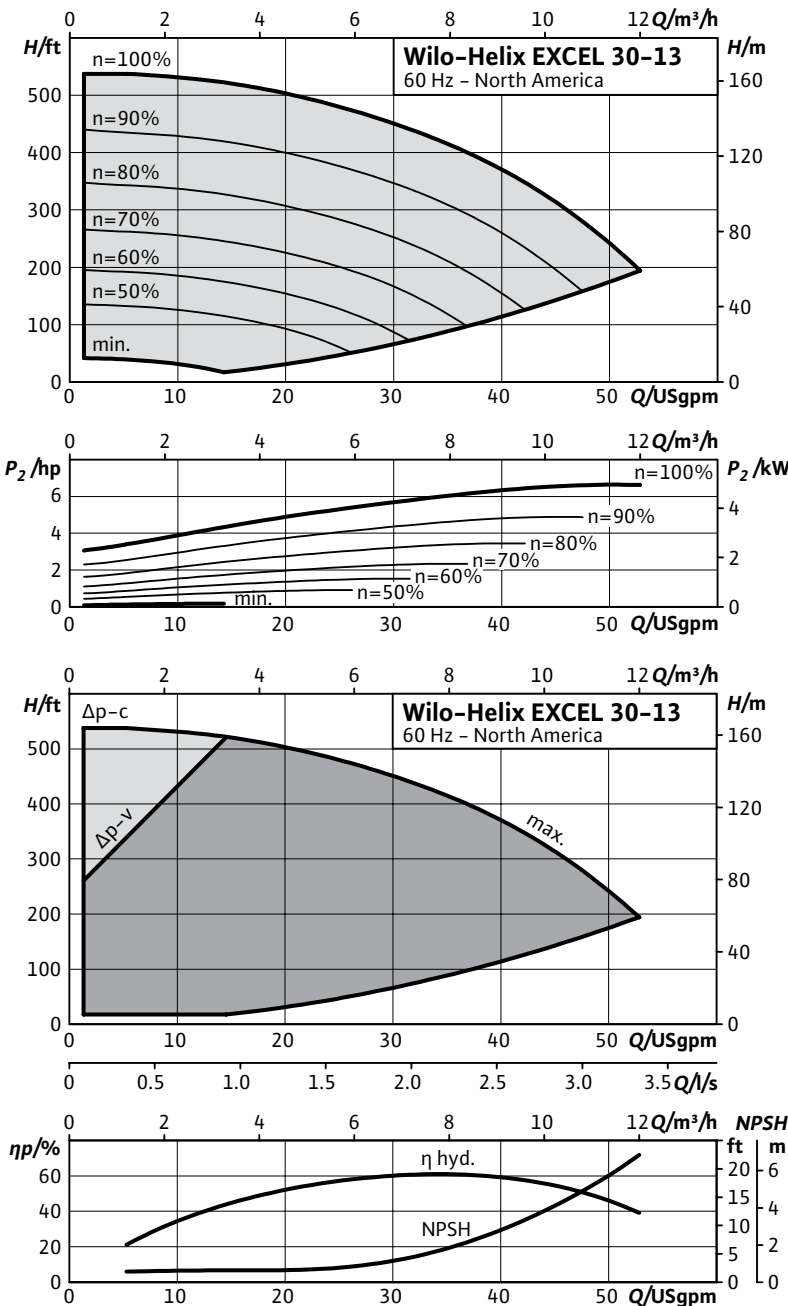
Multistage Pumps

Wilo-Helix EXCEL



| | | | |
|---------------|--|--|-------|
| Project: | | | |
| Engineer: | | | |
| Contractor: | | | |
| Submitted By: | | | Date: |
| Approved By: | | | Date: |

| Tag # | Model # | Flow | Head | Volute | Control Mode | HP | Phase | Voltage |
|-------|-------------------|------|------|--------|--------------|-----|-------|---------|
| | Helix EXCEL 30-13 | | | | | 7.4 | 3 | 460 |



| Product Info | |
|---------------------|-------------|
| Brand | Wilo |
| Product Description | Helix Excel |

| Technical Data | |
|------------------------|-------------------------------------|
| PEI | 0.46 |
| Liquid Temp Range | -22°F to 284°F (-30°C to +120°C) |
| Fluid Compatibility | Water, up to 50/50 Water-Glycol |
| Max Operating Pressure | 232.1/362.6 PSI |
| Mains Voltage | 460V (±10%) 60Hz |
| Protection Class | IP 55, Class F Insulation |
| Ambient Temp Range | 5°F to 104°F (-15°C to 40°C) |
| Ambient Humidity | < 90% without condensation |

| Materials of Construction | | |
|--|---------------------------------|---------------------------------|
| Pump Volute | AISI 304L* | AISI 316L |
| Mechanical Seal | EPDM | FKM |
| Impellers Stage Housings Diffusers | AISI 304L | AISI 316L |
| Shaft | AISI 304L / AISI 318 LN | AISI 316L / AISI 318LN |
| O-ring for mechanical seal | EPDM (FKM gasket on request) | EPDM (FKM gasket on request) |
| Sleeve under the mechanical seal | AISI 316L | AISI 316L |

*304 pump volutes are NSF 61 certified

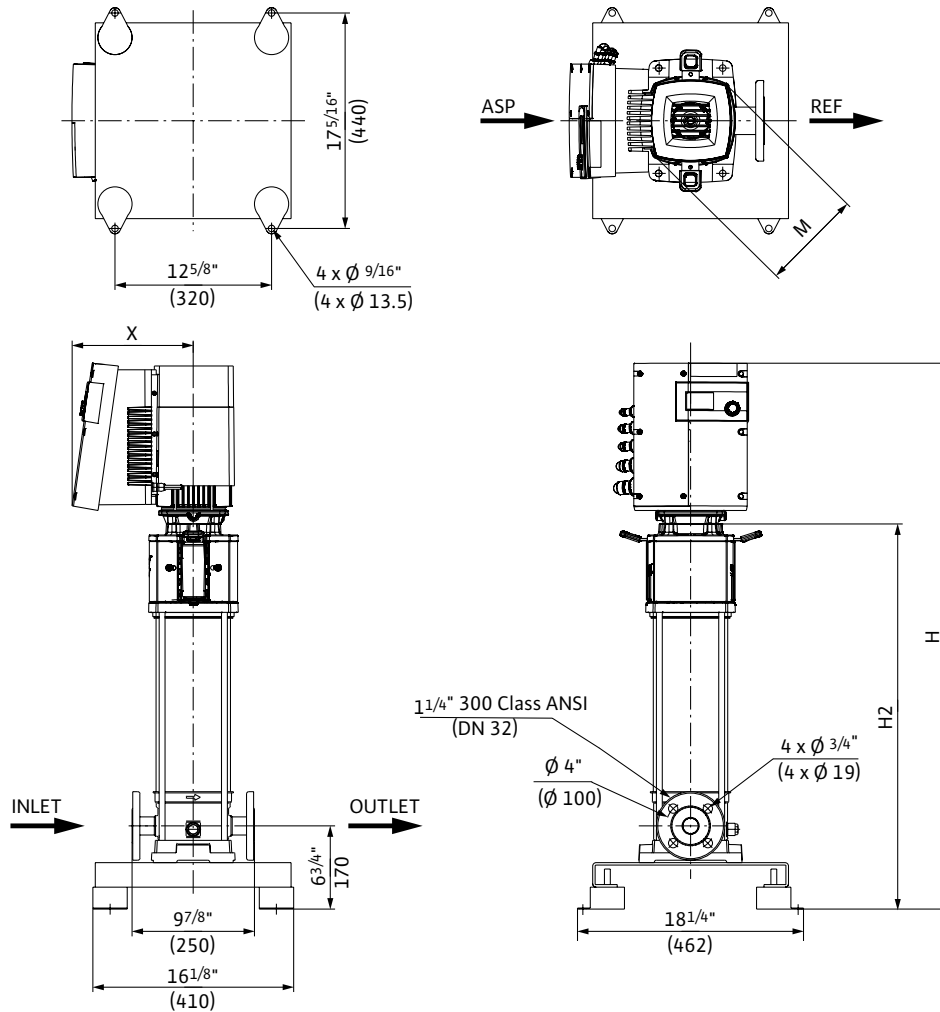
| IR Module Selection | |
|---------------------|----------------------|
| Select | Module |
| | BACnet / Dual Pump |
| | LONworks / Dual Pump |
| | MODBus |
| | None |

| Applications | |
|------------------|-------------------|
| Water Supply | Pressure Boosting |
| Boiler Feed | Cooling Systems |
| Pressure Washing | Irrigation |

Submittal Data Sheet

Multistage Pumps

Wilo-Helix EXCEL

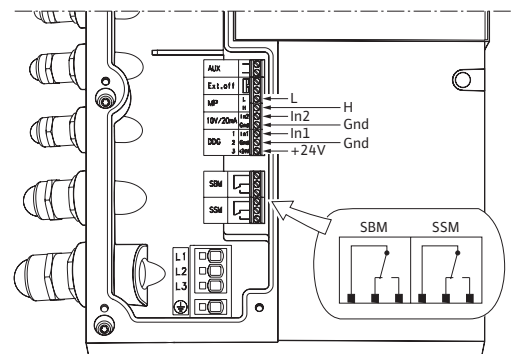


Dimensions and Weights

| Model | Dimensions - Inches (mm) | | | | Weight lbs (kg) |
|-------------------|--------------------------|------------------|----------------|------------------|--------------------|
| | H | H2 | ØM | X | |
| Helix EXCEL 30-13 | $59\frac{11}{16}$ | $43\frac{9}{16}$ | $8\frac{3}{4}$ | $10\frac{9}{16}$ | 176.4 (80) |
| | (1516) | (1106) | (223) | (268) | |

EC Motor Data (Single Motor Operation)

| Model | P ₂ Rated | Phase | Voltage | FLA | Efficiency |
|-------------------|----------------------|-------|---------------|-----|---------------------|
| | hp | [~] | [V] | [A] | η _m 100% |
| Helix EXCEL 30-13 | 7.4 | 3 | 460 (±10%) | 8.2 | 95.8 |



Submittal Data Sheet

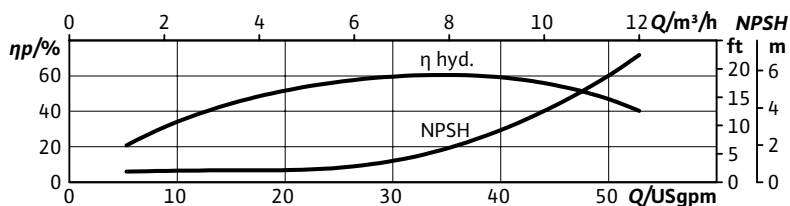
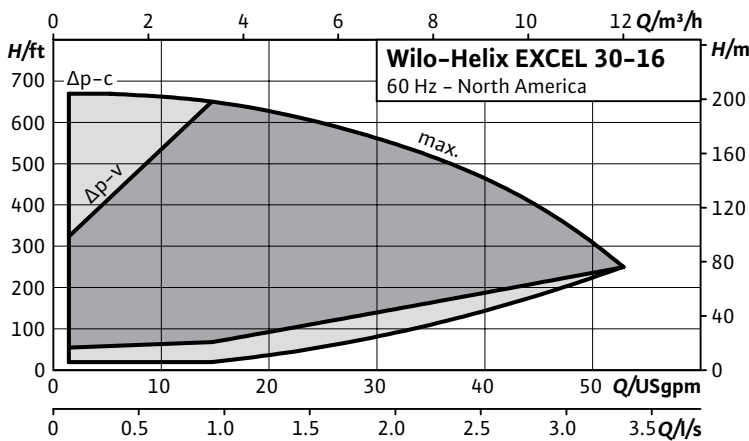
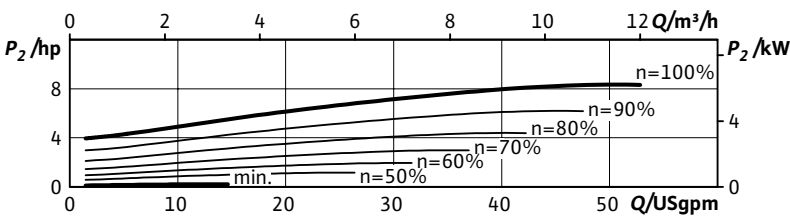
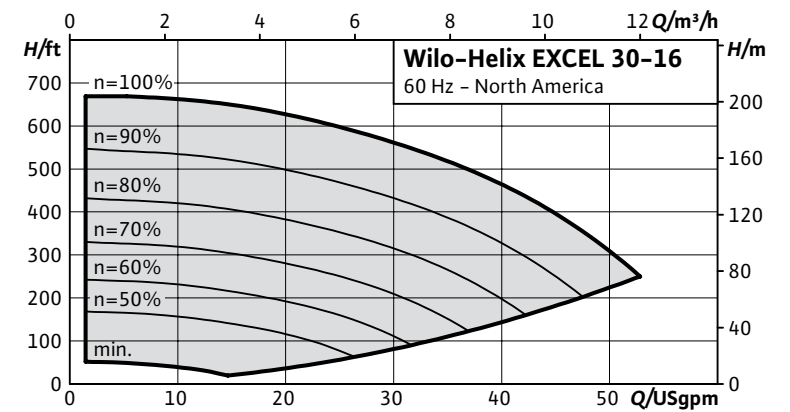
Multistage Pumps

Wilo-Helix EXCEL



| | |
|---------------|-------|
| Project: | |
| Engineer: | |
| Contractor: | |
| Submitted By: | Date: |
| Approved By: | Date: |

| Tag # | Model # | Flow | Head | Volute | Control Mode | HP | Phase | Voltage |
|-------|-------------------|------|------|--------|--------------|-----|-------|---------|
| | Helix EXCEL 30-16 | | | | | 8.7 | 3 | 460 |



Product Info

| | |
|---------------------|-------------|
| Brand | Wilo |
| Product Description | Helix Excel |

Technical Data

| | |
|------------------------|-------------------------------------|
| Liquid Temp Range | -22°F to 284°F (-30°C to +120°C) |
| Fluid Compatibility | Water, up to 50/50 Water-Glycol |
| Max Operating Pressure | 232.1/362.6 PSI |
| Mains Voltage | 460V (±10%) 60Hz |
| Protection Class | IP 55, Class F Insulation |
| Ambient Temp Range | 5°F to 104°F (-15°C to 40°C) |
| Ambient Humidity | < 90% without condensation |

Materials of Construction

| | | |
|--|---------------------------------|---------------------------------|
| Pump Volute | AISI 304L* | AISI 316L |
| Mechanical Seal | EPDM | FKM |
| Impellers Stage Housings Diffusers | AISI 304L | AISI 316L |
| Shaft | AISI 304L / AISI 318 LN | AISI 316L / AISI 318LN |
| O-ring for mechanical seal | EPDM (FKM gasket on request) | EPDM (FKM gasket on request) |
| Sleeve under the mechanical seal | AISI 316L | AISI 316L |

*304 pump volutes are NSF 61 certified

IR Module Selection

| Select | Module |
|--------|----------------------|
| | BACnet / Dual Pump |
| | LONworks / Dual Pump |
| | MODBUS |
| | None |

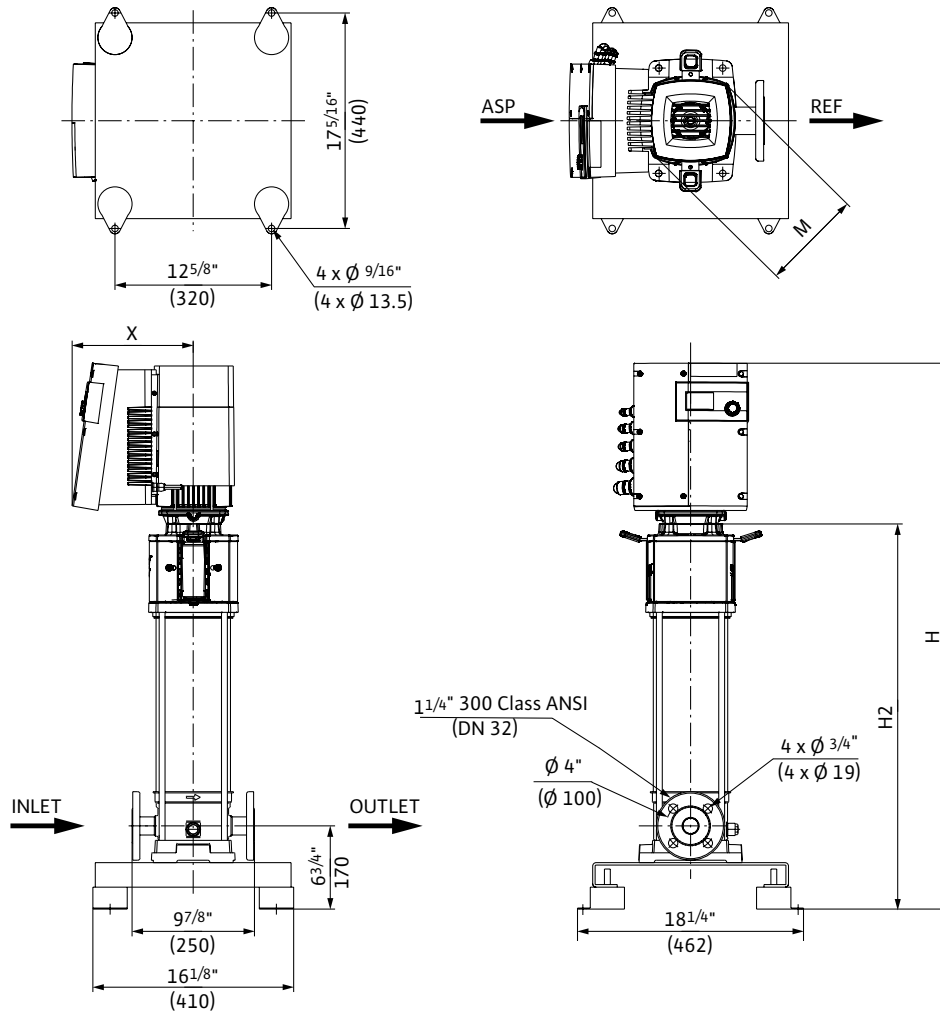
Applications

| | |
|------------------|-------------------|
| Water Supply | Pressure Boosting |
| Boiler Feed | Cooling Systems |
| Pressure Washing | Irrigation |

Submittal Data Sheet

Multistage Pumps

Wilo-Helix EXCEL

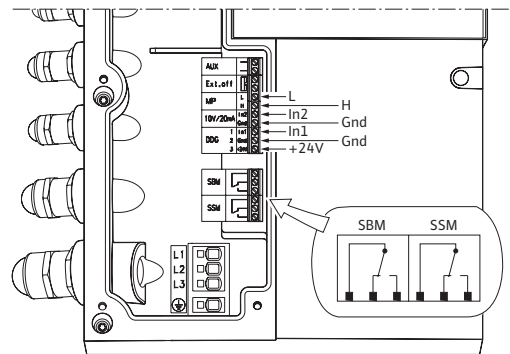


Dimensions and Weights

| Model | Dimensions - Inches (mm) | | | | Weight lbs (kg) |
|-------------------|--------------------------|-----------------|----------------|-------|-----------------|
| | H | H2 | ϕM | X | |
| Helix EXCEL 30-16 | $63\frac{9}{16}$ | $46\frac{1}{8}$ | $9\frac{3}{4}$ | 11 | 209.4 |
| | (1614) | (1181) | (248) | (280) | (95) |

EC Motor Data (Single Motor Operation)

| Model | P_2 Rated | Phase | Voltage | FLA | Efficiency |
|-------------------|-------------|-------|--------------------|-----|---------------|
| | hp | [~] | [V] | [A] | η_m 100% |
| Helix EXCEL 30-16 | 8.7 | 3 | 460 ($\pm 10\%$) | 9.7 | 96.5 |



Submittal Data Sheet

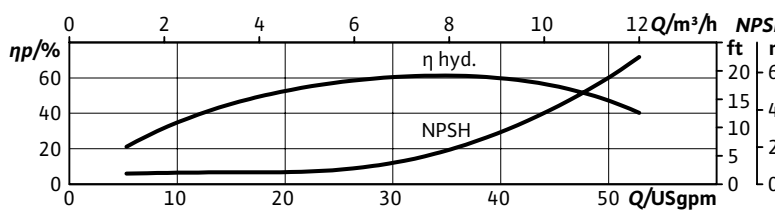
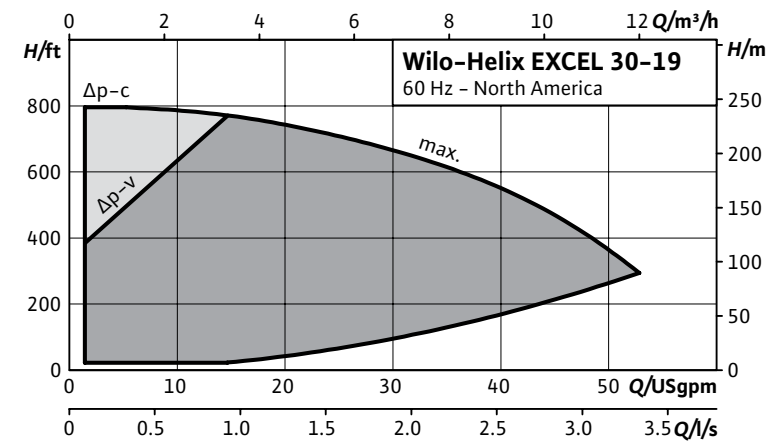
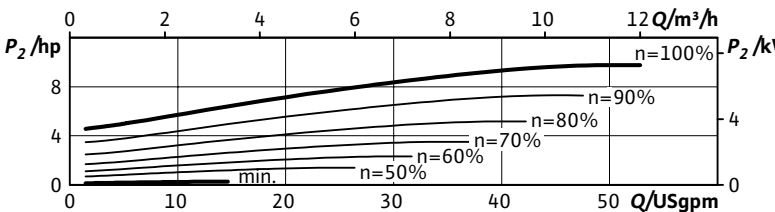
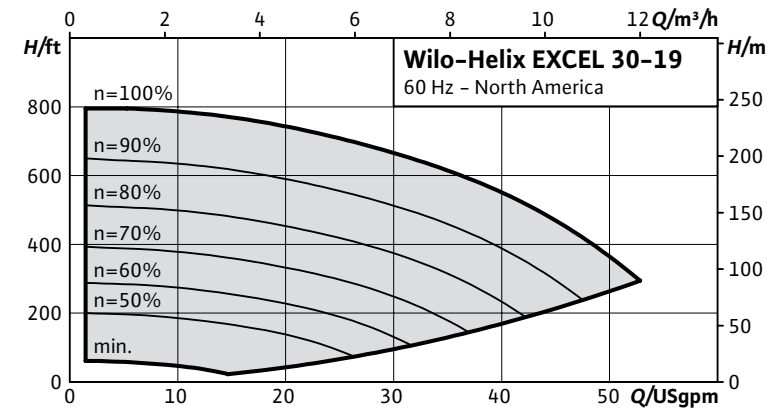
Multistage Pumps

Wilo-Helix EXCEL



| | | | |
|---------------|--|--|-------|
| Project: | | | |
| Engineer: | | | |
| Contractor: | | | |
| Submitted By: | | | Date: |
| Approved By: | | | Date: |

| Tag # | Model # | Flow | Head | Volute | Control Mode | HP | Phase | Voltage |
|-------|-------------------|------|------|--------|--------------|------|-------|---------|
| | Helix EXCEL 30-19 | | | | | 10.1 | 3 | 460 |



| Product Info | |
|---------------------|-------------|
| Brand | Wilo |
| Product Description | Helix Excel |

| Technical Data | |
|------------------------|----------------------------------|
| Liquid Temp Range | -22°F to 284°F (-30°C to +120°C) |
| Fluid Compatibility | Water, up to 50/50 Water-Glycol |
| Max Operating Pressure | 232.1/362.6 PSI |
| Mains Voltage | 460V (±10%) 60Hz |
| Protection Class | IP 55, Class F Insulation |
| Ambient Temp Range | 5°F to 104°F (-15°C to 40°C) |
| Ambient Humidity | < 90% without condensation |

| Materials of Construction | | |
|--|------------------------------|------------------------------|
| Pump Volute | AISI 304L* | AISI 316L |
| Mechanical Seal | EPDM | FKM |
| Impellers Stage Housings Diffusers | AISI 304L | AISI 316L |
| Shaft | AISI 304L / AISI 318 LN | AISI 316L / AISI 318LN |
| O-ring for mechanical seal | EPDM (FKM gasket on request) | EPDM (FKM gasket on request) |
| Sleeve under the mechanical seal | AISI 316L | AISI 316L |

*304 pump volutes are NSF 61 certified

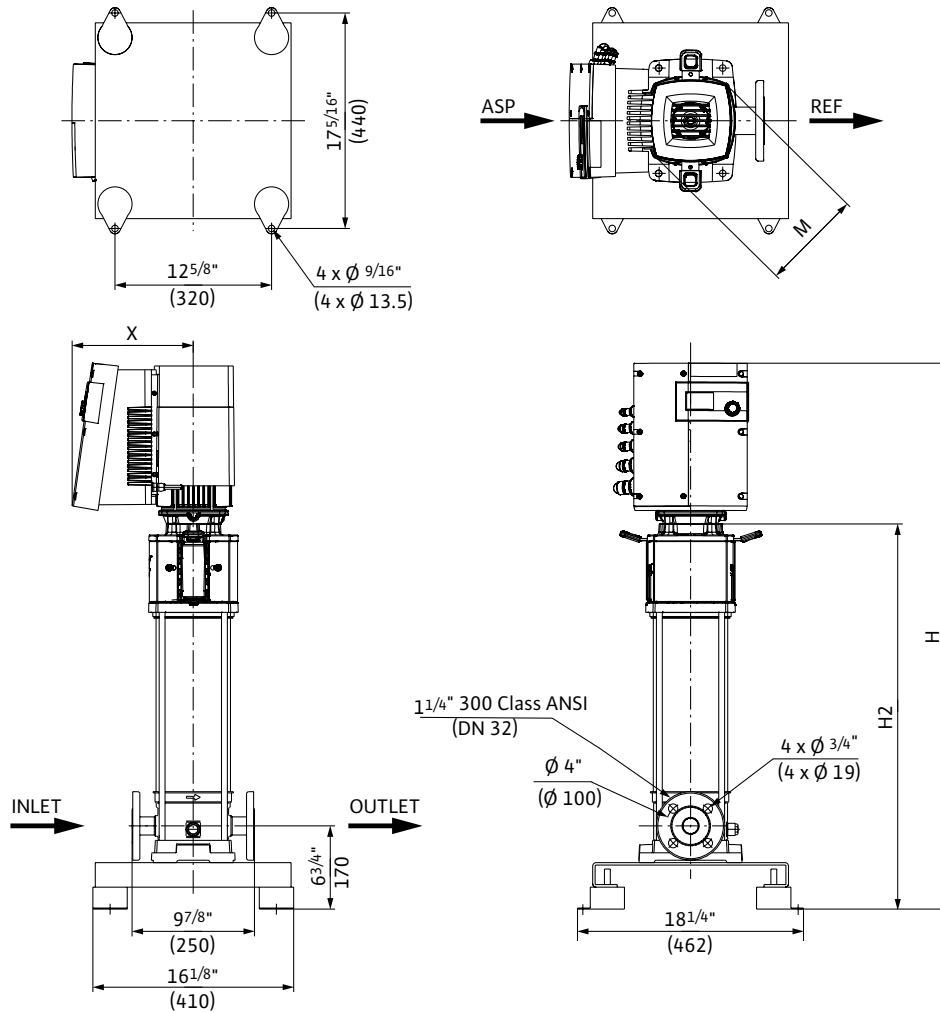
| IR Module Selection | |
|---------------------|----------------------|
| Select | Module |
| | BACnet / Dual Pump |
| | LONworks / Dual Pump |
| | MODBUS |
| | None |

| Applications | |
|------------------|-------------------|
| Water Supply | Pressure Boosting |
| Boiler Feed | Cooling Systems |
| Pressure Washing | Irrigation |

Submittal Data Sheet

Multistage Pumps

Wilo-Helix EXCEL



Dimensions and Weights

| Model | Dimensions - Inches (mm) | | | | Weight lbs (kg) |
|-------------------|--------------------------|-----------------|----------------|-------|-----------------|
| | H | H2 | ϕM | X | |
| Helix EXCEL 30-19 | $69\frac{7}{16}$ | $52\frac{3}{8}$ | $9\frac{3}{4}$ | 11 | 216.1 |
| | (1764) | (1331) | (248) | (280) | (98) |

EC Motor Data (Single Motor Operation)

| Model | P ₂ Rated | Phase | Voltage | FLA | Efficiency |
|-------------------|----------------------|-------|--------------------|------|---------------|
| | hp | [~] | [V] | [A] | η_m 100% |
| Helix EXCEL 30-19 | 10.1 | 3 | 460 ($\pm 10\%$) | 10.9 | 95.4 |

