



## **490 Series SXT 3"–10" Self-Priming**

### **Performance Curves**



A WILO BRAND

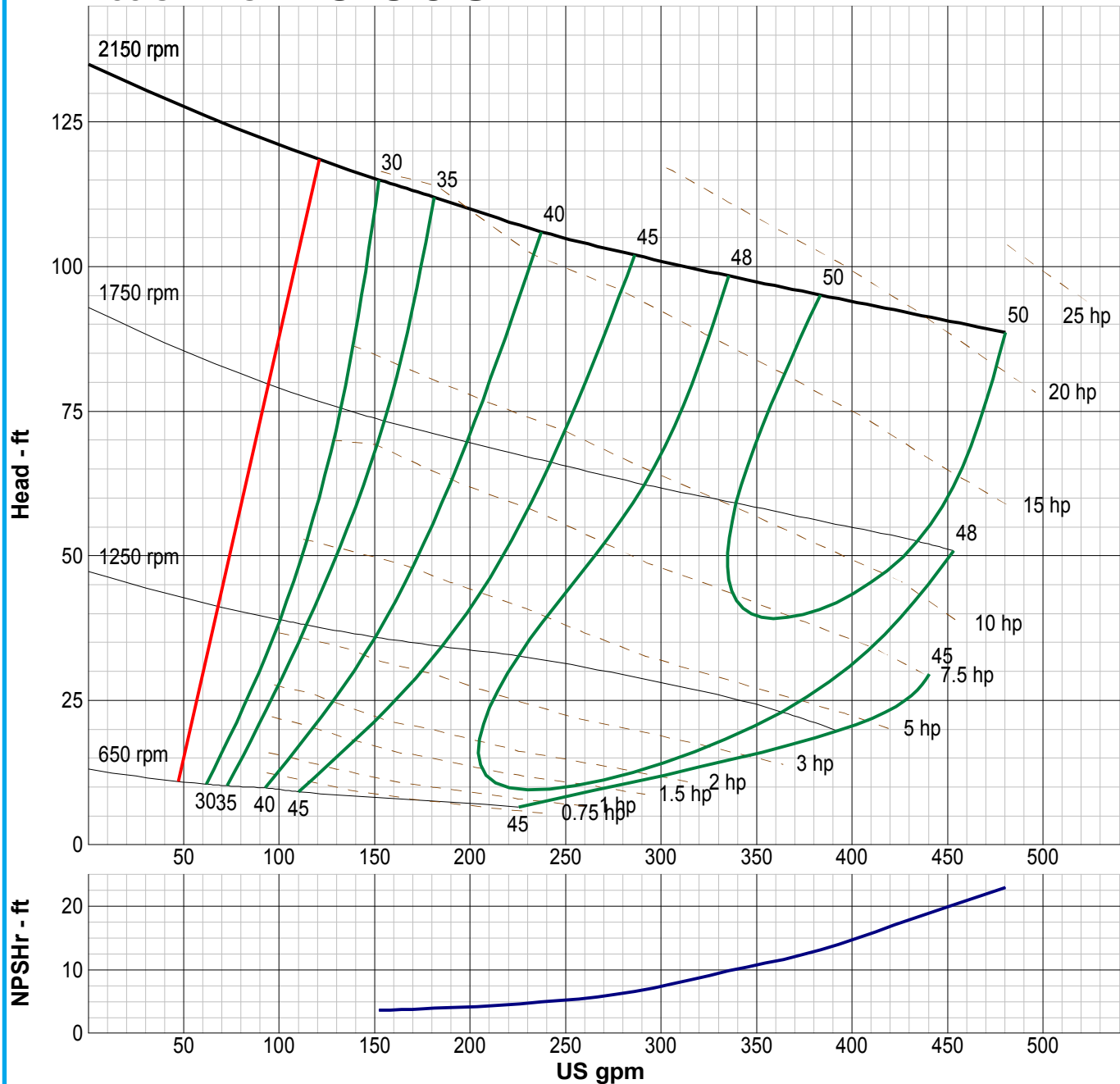
# SELF-PRIMER PUMP CURVE

SINGLE STAGE PERFORMANCE

JANUARY 2010

## 490 SERIES

## 3x3-9 SXT VARIABLE RPM



### RE-PRIMING LIFTS

650 RPM - 5 FEET	1550 RPM - 21 FEET
750 RPM - 6 FEET	1650 RPM - 22 FEET
850 RPM - 8 FEET	1750 RPM - 22 FEET
950 RPM - 10 FEET	1850 RPM - 25 FEET
1050 RPM - 13 FEET	1950 RPM - 25 FEET
1150 RPM - 16 FEET	2050 RPM - 25 FEET
1250 RPM - 18 FEET	2150 RPM - 25 FEET
1350 RPM - 19 FEET	
1450 RPM - 21 FEET	

### PUMP DATA

PUMP WEIGHT	404 LB.
IMPELLER DIAMETER	8.750 IN.
DISCHARGE SIZE	3 IN.
DISCHARGE CONNECTION	NPT (OPT. FLG)
SUCTION SIZE	3 IN.
SUCTION CONNECTION	NPT (OPT. FLG)
MAX. SPHERE SIZE	1.750 IN.
IMPELLER TYPE	TWO VANE OPEN
MAX. FLUID TEMP.	160 F.

Performance based on pumping clear, fresh water at a temperature not over 85° F., free of gas, air or abrasives and with bowls properly adjusted and submerged. Performance curve reflects Hydraulic Institute tolerances and guidelines.



A WILO BRAND

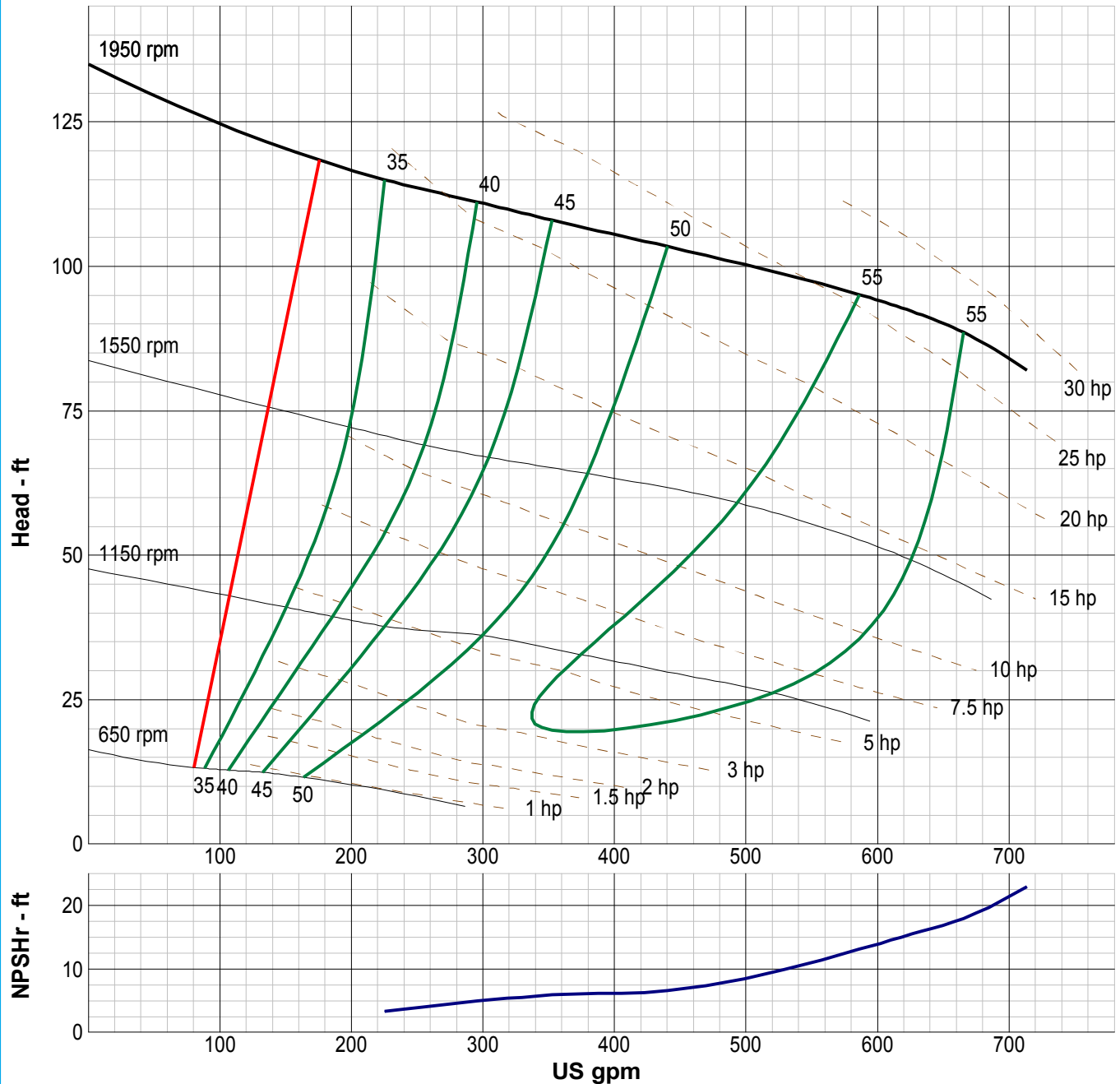
# SELF-PRIMER PUMP CURVE

SINGLE STAGE PERFORMANCE

JANUARY 2010

## 490 SERIES

## 4x4-10 SXT VARIABLE RPM



### RE-PRIMING LIFTS

650 RPM - 5 FEET	1550 RPM - 25 FEET
750 RPM - 8 FEET	1650 RPM - 25 FEET
850 RPM - 16 FEET	1750 RPM - 25 FEET
950 RPM - 19 FEET	1850 RPM - 25 FEET
1050 RPM - 22 FEET	1950 RPM - 25 FEET
1150 RPM - 24 FEET	
1250 RPM - 25 FEET	
1350 RPM - 25 FEET	
1450 RPM - 25 FEET	

### PUMP DATA

PUMP WEIGHT	575 LB.
IMPELLER DIAMETER	9.750 IN.
DISCHARGE SIZE	4 IN.
DISCHARGE CONNECTION	NPT (OPT. FLG)
SUCTION SIZE	4 IN.
SUCTION CONNECTION	NPT (OPT. FLG)
MAX. SPHERE SIZE	3.000 IN.
IMPELLER TYPE	TWO VANE OPEN
MAX. FLUID TEMP.	160 F.

Performance based on pumping clear, fresh water at a temperature not over 85° F., free of gas, air or abrasives and with bowls properly adjusted and submerged. Performance curve reflects Hydraulic Institute tolerances and guidelines.



A WILO BRAND

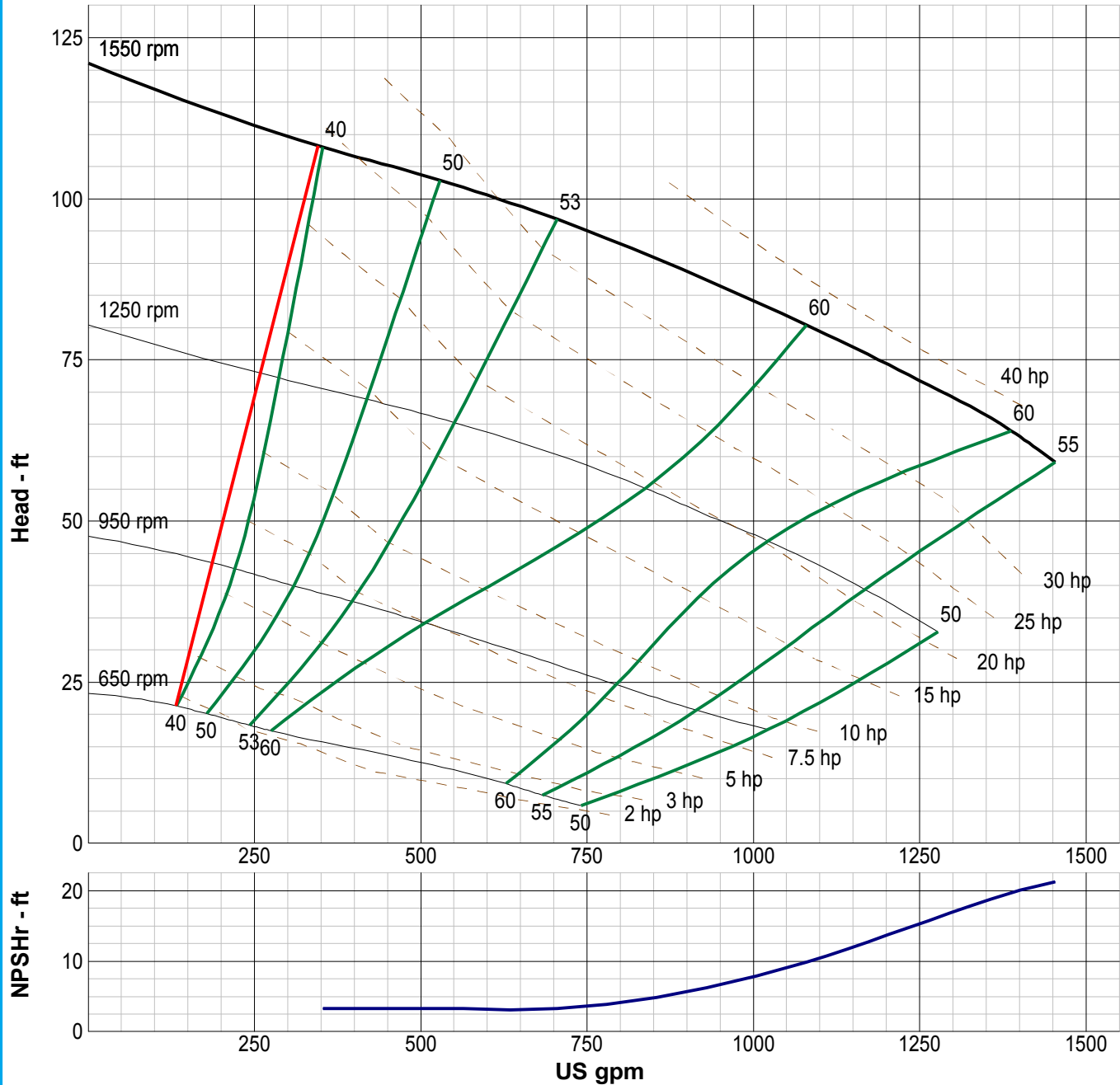
# SELF-PRIMER PUMP CURVE

SINGLE STAGE PERFORMANCE

JANUARY 2010

## 490 SERIES

## 6x6-12 SXT VARIABLE RPM



### RE-PRIMING LIFTS

650 RPM - 5 FEET	1550 RPM - 25 FEET
750 RPM - 6 FEET	
850 RPM - 8 FEET	
950 RPM - 10 FEET	
1050 RPM - 13 FEET	
1150 RPM - 21 FEET	
1250 RPM - 21 FEET	
1350 RPM - 22 FEET	
1450 RPM - 23 FEET	

### PUMP DATA

PUMP WEIGHT	802 LB.
IMPELLER DIAMETER	12.375 IN.
DISCHARGE SIZE	6 IN.
DISCHARGE CONNECTION	NPT (OPT. FLG)
SUCTION SIZE	6 IN.
SUCTION CONNECTION	NPT (OPT. FLG)
MAX. SPHERE SIZE	3.000 IN.
IMPELLER TYPE	TWO VANE OPEN
MAX. FLUID TEMP.	160 F.

Performance based on pumping clear, fresh water at a temperature not over 85° F., free of gas, air or abrasives and with bowls properly adjusted and submerged. Performance curve reflects Hydraulic Institute tolerances and guidelines.



A WILO BRAND

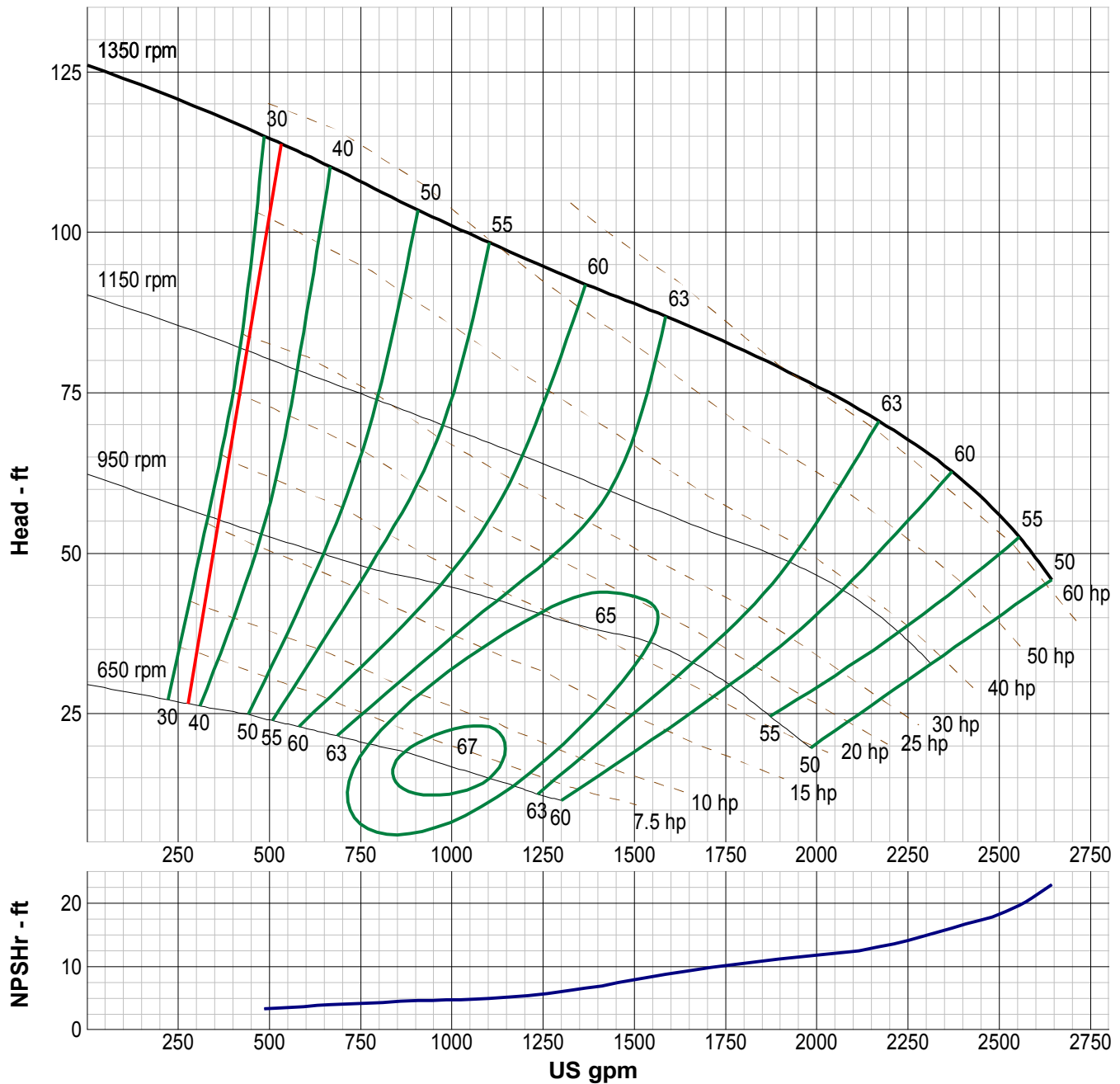
# SELF-PRIMER PUMP CURVE

SINGLE STAGE PERFORMANCE

JANUARY 2010

## 490 SERIES

## 8x8-15 SXT VARIABLE RPM



### RE-PRIMING LIFTS

650 RPM - 9 FEET
750 RPM - 10 FEET
850 RPM - 10 FEET
950 RPM - 10 FEET
1050 RPM - 20 FEET
1150 RPM - 21 FEET
1250 RPM - 22 FEET
1350 RPM - 22 FEET

### PUMP DATA

PUMP WEIGHT	1170 LB.
IMPELLER DIAMETER	14.750 IN.
DISCHARGE SIZE	8 IN.
DISCHARGE CONNECTION	NPT (OPT. FLG)
SUCTION SIZE	8 IN.
SUCTION CONNECTION	NPT (OPT. FLG)
MAX. SPHERE SIZE	3.000 IN.
IMPELLER TYPE	TWO VANE OPEN
MAX. FLUID TEMP.	160 F.

Performance based on pumping clear, fresh water at a temperature not over 85° F., free of gas, air or abrasives and with bowls properly adjusted and submerged. Performance curve reflects Hydraulic Institute tolerances and guidelines.



A WILO BRAND

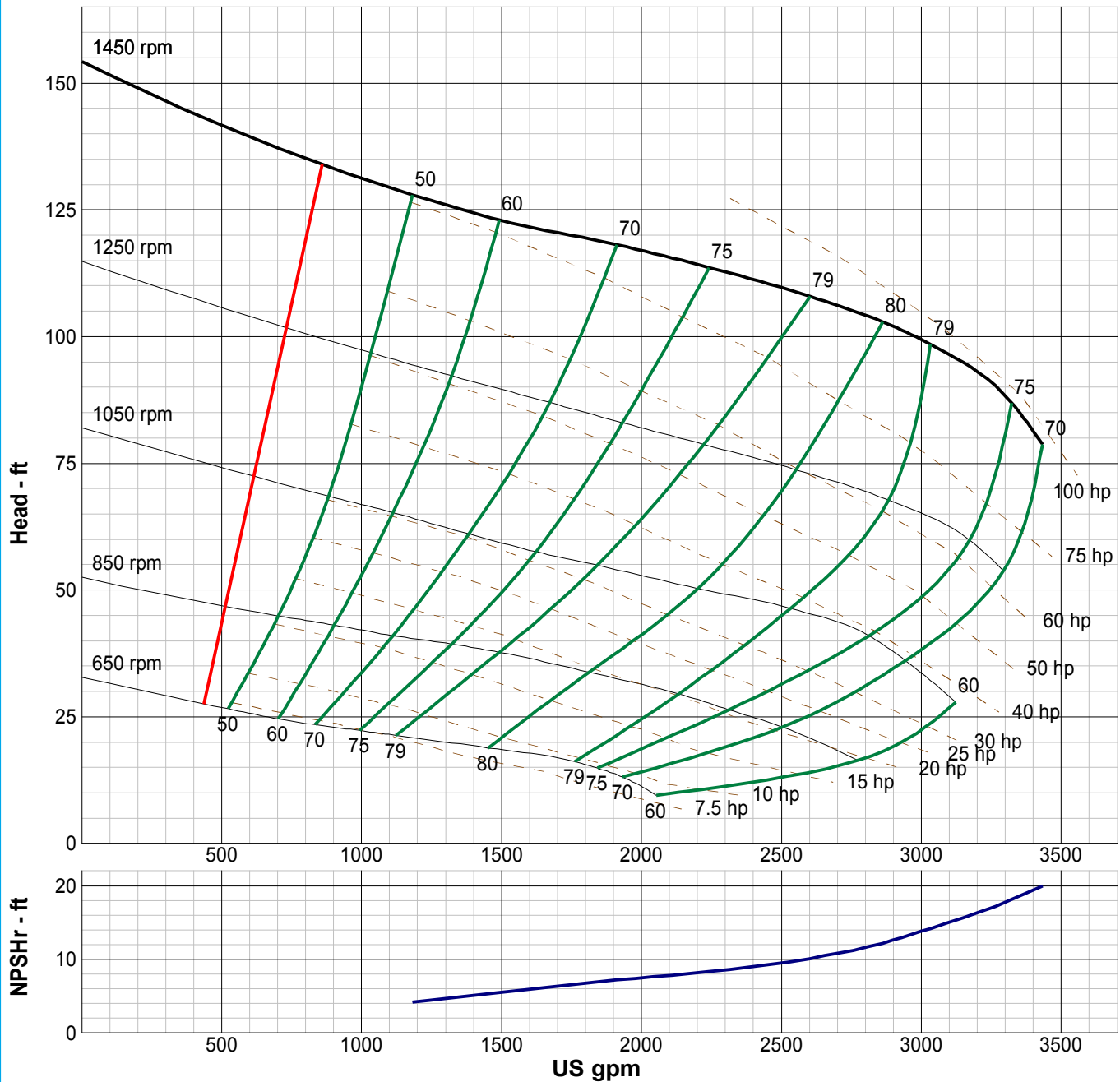
# SELF-PRIMER PUMP CURVE

SINGLE STAGE PERFORMANCE

JANUARY 2010

## 490 SERIES

## 10x10-15 SXT VARIABLE RPM



### RE-PRIMING LIFTS

650 RPM - 7 FEET
750 RPM - 11 FEET
850 RPM - 14 FEET
950 RPM - 17 FEET
1050 RPM - 18 FEET
1150 RPM - 18 FEET
1250 RPM - 19 FEET
1350 RPM - 22 FEET
1450 RPM - 22 FEET

### PUMP DATA

PUMP WEIGHT	1400 LB.
IMPELLER DIAMETER	14.750 IN.
DISCHARGE SIZE	10 IN.
DISCHARGE CONNECTION	FLG
SUCTION SIZE	10 IN.
SUCTION CONNECTION	FLG
MAX. SPHERE SIZE	3.000 IN.
IMPELLER TYPE	TWO VANE OPEN
MAX. FLUID TEMP.	160 F.

Performance based on pumping clear, fresh water at a temperature not over 85° F., free of gas, air or abrasives and with bowls properly adjusted and submerged. Performance curve reflects Hydraulic Institute tolerances and guidelines.

WILO USA LLC

T +1 262 204 6600    [www.wilo-usa.com](http://www.wilo-usa.com)  
info.us@wilo.com

American-Marsh Pumps

T +1 901 860 2300    [www.american-marsh.com](http://www.american-marsh.com)  
F +1 901 860 2323    amp.cs@wilo.com

