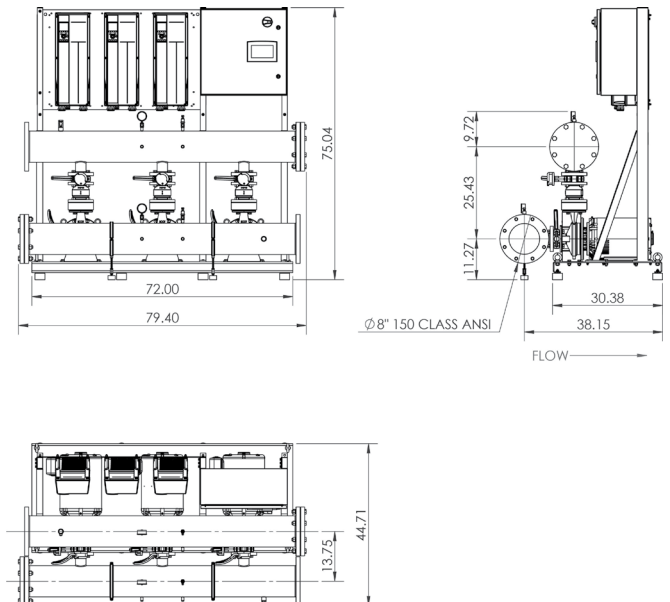
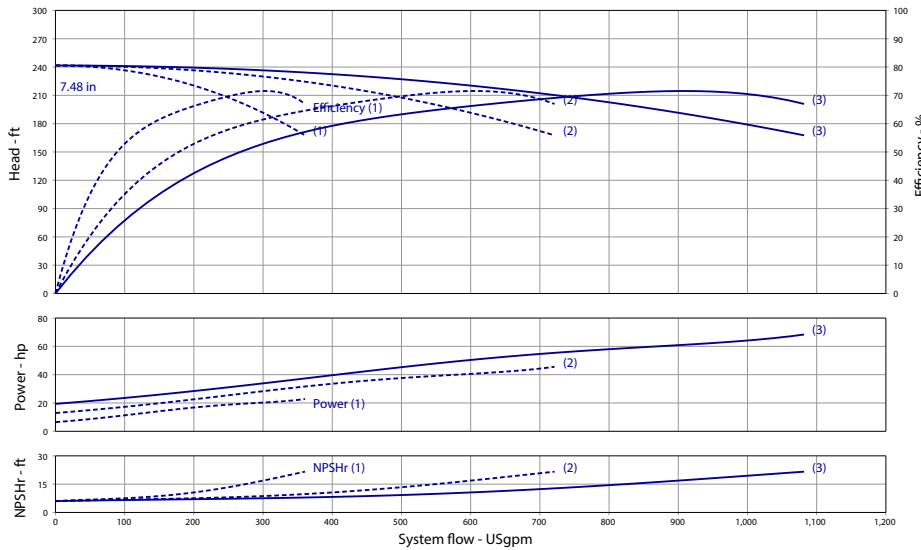


Wilo-WiBooster

| | | Project: | | | | | |
|-------|------------------------|---------------|------|---------|-------|-------|---------|
| | | Engineer: | | | | | |
| | | Contractor: | | | | | |
| | | Submitted By: | | | Date: | | |
| | | Approved By: | | | Date: | | |
| Tag # | Model # | Flow | Head | HP/Pump | Cycle | Phase | Voltage |
| | WiBooster 3/328/B1/ODP | | | 20 | 60Hz | | |

Article Number: 3311257



Product Info

| | |
|---------------------|----------------------------|
| Brand | Wilo |
| Product Description | WiBooster 3/328/B1/300/ODP |

Construction Materials

| | |
|----------------------|--|
| Pump Volute | 304 Stainless Steel |
| Impeller | 304 Stainless Steel |
| Shaft | 304 Stainless Steel |
| Elastomers | EPDM |
| Isolation Valves | Butterfly, SS Stem/Disc, EPDM Seal |
| Manifolds | 304 Stainless Steel, ANSI-Flanged |
| Check Valves | Stainless Steel, Non-Slam, Plunger Type with EPDM Seal |
| Mechanical Seal | Type 21 |
| Pressure Transducers | 316 Stainless Steel |
| Pressure Gauges | 304/316 Stainless Steel |
| System Base | Plated Steel |
| Vibration Isolators | Neoprene, Height-Adjustable |

Motor Data

| | |
|------------------------|------------------------|
| Motor Power Supply | 3~208-230V |
| Enclosure | ODP |
| Efficiency | NEMA Premium |
| Horsepower/Pump | 20 |
| Enclosure Material | Rolled Steel/Cast Iron |
| Motor Protection Class | IP54 |
| Insulation Class | F |

Hydraulic Data

| | |
|------------------------|---------|
| Max Operating Pressure | 150 PSI |
| Max Inlet Pressure | 75 PSI |
| Min. Fluid Temp. | 40°F |
| Max Fluid Temp. | 140°F |
| Min. Ambient Temp | 32°F |
| Max. Ambient Temp | 104°F |

Panel Info

| | |
|--------------|-----------------------------------|
| Power Supply | 3~208-230 |
| Enclosure | NEMA 12 (3R Available on Request) |
| Standard | Meets UL 508A |
| VFD's | Danfoss FC-101/FC-202 |

PLC Info

| | |
|------------------------|---|
| User Interface | 7" Color Touchscreen |
| Display Resolution | 800 x 480 Pixels |
| Supply Voltage | 24VDC |
| Max Current | 320mA @24V |
| Analog Inputs/Outputs | 9/2 |
| Digital Inputs/Outputs | 18/17 |
| Communications | ModBUS Standard (BacNET, LONWorks Optional) |
| Ethernet Port | RJ45 (10/100Mbps) |
| Additional Ports | USB 2.0, Micro-SD |

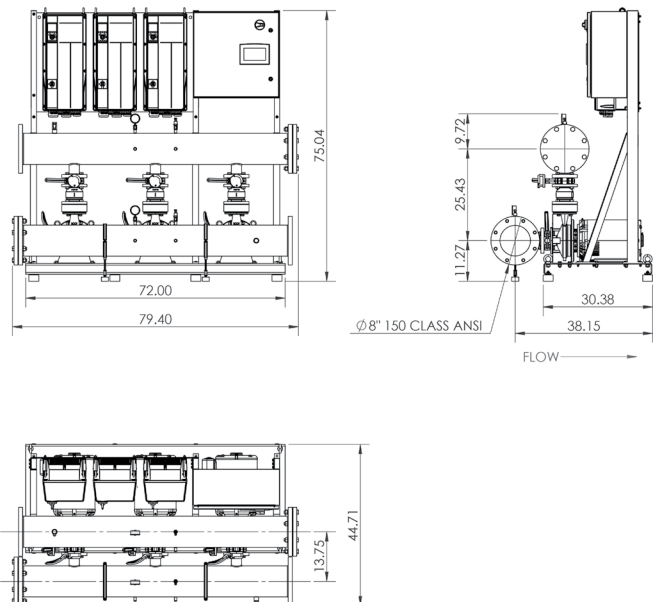
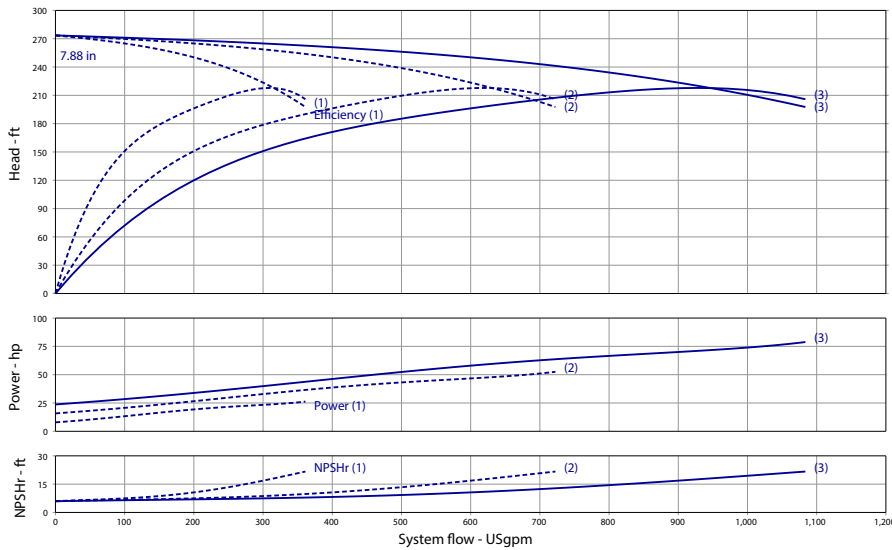


| Triplex Phase and Voltage | Full Flow Connection (in) | | | Half Flow Connection (in) | | |
|--------------------------------|---------------------------|----------|---------|---------------------------|-------|-------|
| | 3~208-230V | 3~460V | 3~575V | 3~575V | 3~460 | 3~575 |
| Panel Dimensions (HxWxD) | 24x24x8 | 30x39x12 | 24x24x8 | 24x24x8 | 4 | 4 |
| Full Load Amps (Per Pump) | 47 | 23.5 | 19 | 47 | 23.5 | 19 |
| Panel Weight (lbs) | 100 | 164.5 | 92 | 100 | 164.5 | 92 |
| External VFD Weight (ea - lbs) | 60 | X | 50 | 60 | X | 50 |
| Pump Weight (ea - lbs) | 225 | 225 | 225 | 225 | 225 | 225 |
| System Weight (lbs) | 1890 | 1765 | 1990 | 1755 | 1635 | 1855 |

Wilo-WiBooster

| | | Project: | | | | | |
|-------|------------------------|---------------|------|---------|-------|-------|---------|
| | | Engineer: | | | | | |
| | | Contractor: | | | | | |
| | | Submitted By: | | | Date: | | |
| | | Approved By: | | | Date: | | |
| Tag # | Model # | Flow | Head | HP/Pump | Cycle | Phase | Voltage |
| | WiBooster 3/328/A1/ODP | | | 25 | 60Hz | | |

Article Number: 3311258



Product Info

Brand: Wilo
Product Description: WiBooster 3/328/A1/310/ODP

Construction Materials

Pump Volute: 304 Stainless Steel
Impeller: 304 Stainless Steel
Shaft: 304 Stainless Steel
Elastomers: EPDM
Isolation Valves: Butterfly, SS Stem/Disc, EPDM Seal
Manifolds: 304 Stainless Steel, ANSI-Flanged
Check Valves: Stainless Steel, Non-Slam, Plunger Type with EPDM Seal
Mechanical Seal: Type 21
Pressure Transducers: 316 Stainless Steel
Pressure Gauges: 304/316 Stainless Steel
System Base: Plated Steel
Vibration Isolators: Neoprene, Height-Adjustable

Motor Data

Motor Power Supply: 3-208-230V
Enclosure: ODP
Efficiency: NEMA Premium
Horsepower/Pump: 25
Enclosure Material: Rolled Steel/Cast Iron
Motor Protection Class: IP54
Insulation Class: F

Hydraulic Data

Max Operating Pressure: 150 PSI
Max Inlet Pressure: 75 PSI
Min. Fluid Temp.: 40°F
Max Fluid Temp.: 140°F
Min. Ambient Temp.: 32°F
Max. Ambient Temp.: 104°F

Panel Info

Power Supply: 3-208-230
Enclosure: NEMA 12 (3R Available on Request)
Standard: Meets UL 508A
VFD's: Danfoss FC-101/FC-202

PLC Info

User Interface: 7" Color Touchscreen
Display Resolution: 800 x 480 Pixels
Supply Voltage: 24VDC
Max Current: 320mA @24V
Analog Inputs/Outputs: 9/2
Digital Inputs/Outputs: 18/17
Communications: ModBUS Standard (BacNET, LONWorks Optional)
Ethernet Port: RJ45 (10/100Mbps)
Additional Ports: USB 2.0, Micro-SD

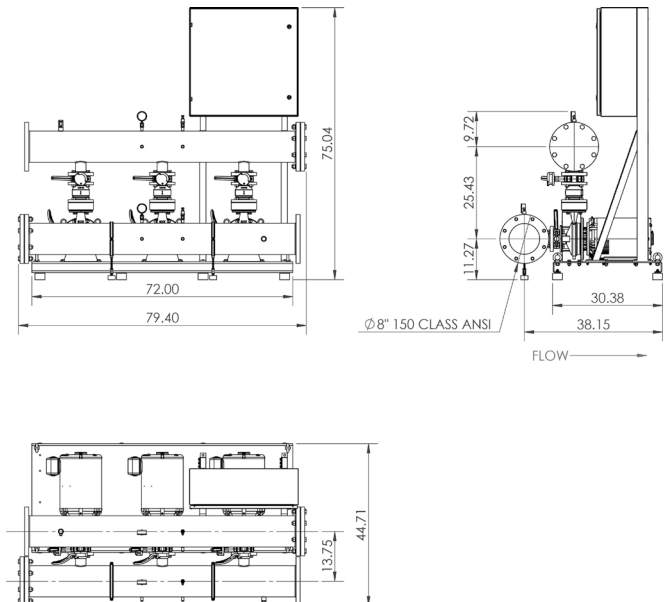
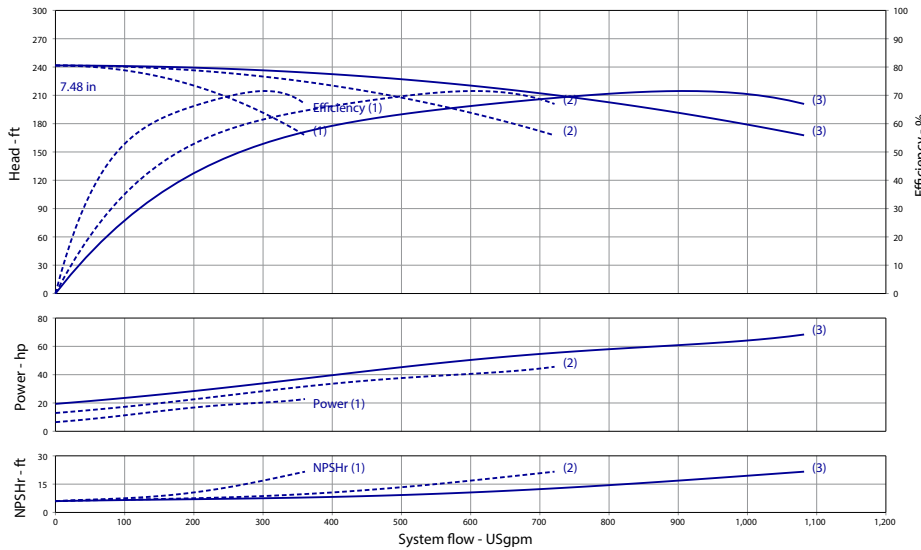


| Triplex Phase and Voltage | Full Flow Connection (in) | | | Half Flow Connection (in) | | |
|--------------------------------|---------------------------|----------|---------|---------------------------|-------|-------|
| | 3~208-230V | 3~460V | 3~575V | 3~575V | 3~460 | 3~575 |
| Panel Dimensions (HxWxD) | 24x24x8 | 30x39x12 | 24x24x8 | 24x24x8 | 4 | 4 |
| Full Load Amps (Per Pump) | 56 | 28 | 22.5 | 56 | 28 | 22.5 |
| Panel Weight (lbs) | 45 | 90 | 90 | 45 | 90 | 90 |
| External VFD Weight (ea - lbs) | 100 | X | 50 | 100 | X | 50 |
| Pump Weight (ea - lbs) | 325 | 325 | 325 | 325 | 325 | 325 |
| System Weight (lbs) | 2235 | 1865 | 2130 | 2105 | 1815 | 2000 |

Wilo-WiBooster

| | | Project: | | | | | |
|-------|------------------------|---------------|------|---------|-------|-------|---------|
| | | Engineer: | | | | | |
| | | Contractor: | | | | | |
| | | Submitted By: | | | Date: | | |
| | | Approved By: | | | Date: | | |
| Tag # | Model # | Flow | Head | HP/Pump | Cycle | Phase | Voltage |
| | WiBooster 3/328/B1/ODP | | | 20 | 60Hz | | |

Article Number: 3311275



Product Info

Brand: Wilo
Product Description: WiBooster 3/328/B1/300/ODP

Construction Materials

Pump Volute: 304 Stainless Steel
Impeller: 304 Stainless Steel
Shaft: 304 Stainless Steel
Elastomers: EPDM
Isolation Valves: Butterfly, SS Stem/Disc, EPDM Seal
Manifolds: 304 Stainless Steel, ANSI-Flanged
Check Valves: Stainless Steel, Non-Slam, Plunger Type with EPDM Seal
Mechanical Seal: Type 21
Pressure Transducers: 316 Stainless Steel
Pressure Gauges: 304/316 Stainless Steel
System Base: Plated Steel
Vibration Isolators: Neoprene, Height-Adjustable

Motor Data

Motor Power Supply: 3-460V
Enclosure: ODP
Efficiency: NEMA Premium
Horsepower/Pump: 20
Enclosure Material: Rolled Steel/Cast Iron
Motor Protection Class: IP54
Insulation Class: F

Hydraulic Data

Max Operating Pressure: 150 PSI
Max Inlet Pressure: 75 PSI
Min. Fluid Temp.: 40°F
Max Fluid Temp.: 140°F
Min. Ambient Temp.: 32°F
Max. Ambient Temp.: 104°F

Panel Info

Power Supply: 3-460
Enclosure: NEMA 12 (3R Available on Request)
Standard: Meets UL 508A
VFD's: Danfoss FC-101/FC-202

PLC Info

User Interface: 7" Color Touchscreen
Display Resolution: 800 x 480 Pixels
Supply Voltage: 24VDC
Max Current: 320mA @24V
Analog Inputs/Outputs: 9/2
Digital Inputs/Outputs: 18/17
Communications: ModBUS Standard (BacNET, LONWorks Optional)
Ethernet Port: RJ45 (10/100Mbps)
Additional Ports: USB 2.0, Micro-SD

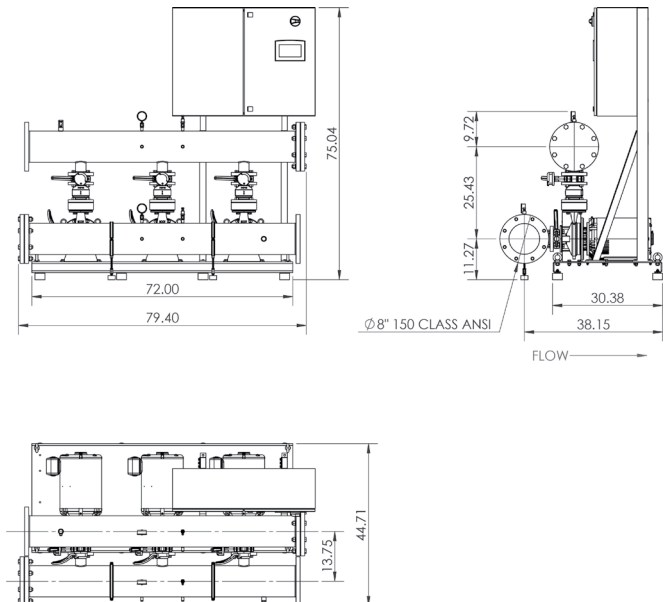
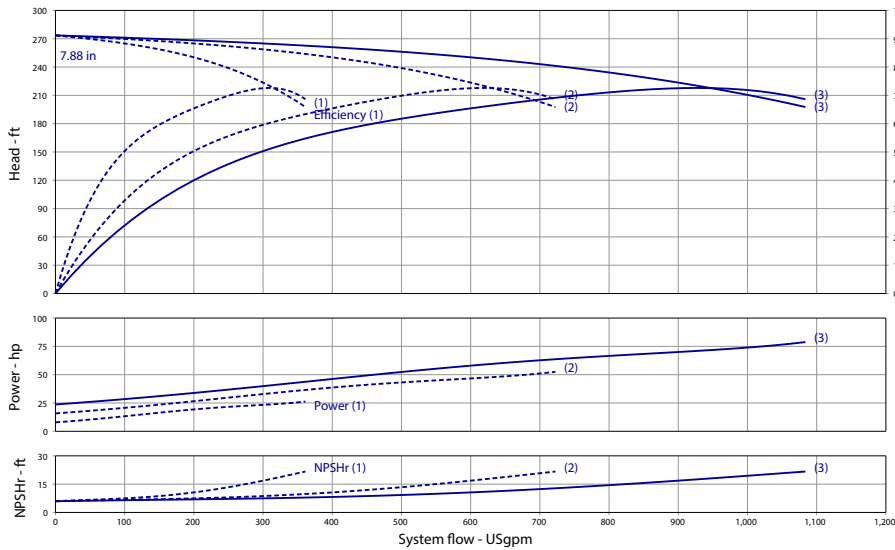


| Triplex Phase and Voltage | Full Flow Connection (in) | | | Half Flow Connection (in) | | |
|--------------------------------|---------------------------|----------|---------|---------------------------|--------|--------|
| | 3~208-230V | 3~460V | 3~575V | 3~575V | 3~460V | 3~575V |
| Panel Dimensions (HxWxD) | 24x24x8 | 30x39x12 | 24x24x8 | 24x24x8 | 4 | 4 |
| Full Load Amps (Per Pump) | 47 | 23.5 | 19 | 47 | 23.5 | 19 |
| Panel Weight (lbs) | 100 | 164.5 | 92 | 100 | 164.5 | 92 |
| External VFD Weight (ea - lbs) | 60 | X | 50 | 60 | X | 50 |
| Pump Weight (ea - lbs) | 225 | 225 | 225 | 225 | 225 | 225 |
| System Weight (lbs) | 1890 | 1765 | 1990 | 1755 | 1635 | 1855 |

Wilo-WiBooster

| | | Project: | | | | | |
|-------|------------------------|---------------|------|---------|-------|-------|---------|
| | | Engineer: | | | | | |
| | | Contractor: | | | | | |
| | | Submitted By: | | | Date: | | |
| | | Approved By: | | | Date: | | |
| Tag # | Model # | Flow | Head | HP/Pump | Cycle | Phase | Voltage |
| | WiBooster 3/328/A1/ODP | | | 25 | 60Hz | | |

Article Number: 3311276



Product Info

Brand: Wilo
Product Description: WiBooster 3/328/A1/310/ODP

Construction Materials

Pump Volute: 304 Stainless Steel
Impeller: 304 Stainless Steel
Shaft: 304 Stainless Steel
Elastomers: EPDM
Isolation Valves: Butterfly, SS Stem/Disc, EPDM Seal
Manifolds: 304 Stainless Steel, ANSI-Flanged
Check Valves: Stainless Steel, Non-Slam, Plunger Type with EPDM Seal
Mechanical Seal: Type 21
Pressure Transducers: 316 Stainless Steel
Pressure Gauges: 304/316 Stainless Steel
System Base: Plated Steel
Vibration Isolators: Neoprene, Height-Adjustable

Motor Data

Motor Power Supply: 3-460V
Enclosure: ODP
Efficiency: NEMA Premium
Horsepower/Pump: 25
Enclosure Material: Rolled Steel/Cast Iron
Motor Protection Class: IP54
Insulation Class: F

Hydraulic Data

Max Operating Pressure: 150 PSI
Max Inlet Pressure: 75 PSI
Min. Fluid Temp.: 40°F
Max Fluid Temp.: 140°F
Min. Ambient Temp.: 32°F
Max. Ambient Temp.: 104°F

Panel Info

Power Supply: 3-460
Enclosure: NEMA 12 (3R Available on Request)
Standard: Meets UL 508A
VFD's: Danfoss FC-101/FC-202

PLC Info

User Interface: 7" Color Touchscreen
Display Resolution: 800 x 480 Pixels
Supply Voltage: 24VDC
Max Current: 320mA @24V
Analog Inputs/Outputs: 9/2
Digital Inputs/Outputs: 18/17
Communications: ModBUS Standard (BacNET, LONWorks Optional)
Ethernet Port: RJ45 (10/100Mbps)
Additional Ports: USB 2.0, Micro-SD

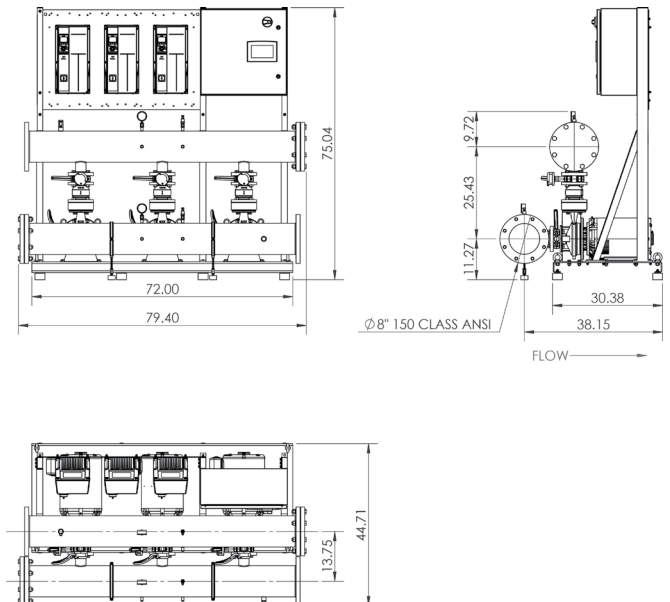
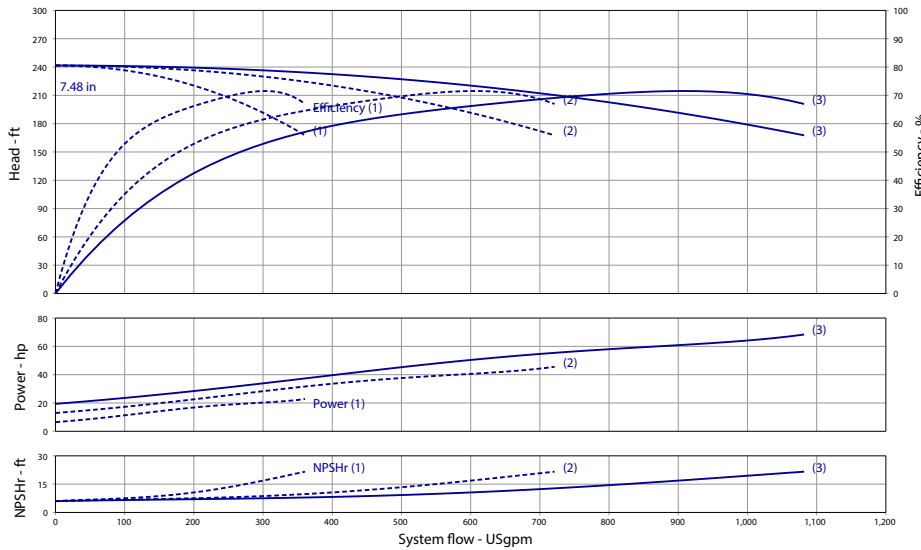


| Triplex Phase and Voltage | Full Flow Connection (in) | | | Half Flow Connection (in) | | |
|--------------------------------|---------------------------|----------|---------|---------------------------|-------|-------|
| | 3~208-230V | 3~460V | 3~575V | 3~575V | 3~460 | 3~575 |
| Panel Dimensions (HxWxD) | 24x24x8 | 30x39x12 | 24x24x8 | 24x24x8 | 4 | 4 |
| Full Load Amps (Per Pump) | 56 | 28 | 22.5 | 56 | 28 | 22.5 |
| Panel Weight (lbs) | 45 | 90 | 90 | 45 | 90 | 90 |
| External VFD Weight (ea - lbs) | 100 | X | 50 | 100 | X | 50 |
| Pump Weight (ea - lbs) | 325 | 325 | 325 | 325 | 325 | 325 |
| System Weight (lbs) | 2235 | 1865 | 2130 | 2105 | 1815 | 2000 |

Wilo-WiBooster

| | | Project: | | | | | |
|-------|------------------------|---------------|------|---------|-------|-------|---------|
| | | Engineer: | | | | | |
| | | Contractor: | | | | | |
| | | Submitted By: | | | Date: | | |
| | | Approved By: | | | Date: | | |
| Tag # | Model # | Flow | Head | HP/Pump | Cycle | Phase | Voltage |
| | WiBooster 3/328/B1/ODP | | | 20 | 60Hz | | |

Article Number: 3311293



Product Info

Brand: Wilo
Product Description: WiBooster 3/328/B1/300/ODP

Construction Materials

Pump Volute: 304 Stainless Steel
Impeller: 304 Stainless Steel
Shaft: 304 Stainless Steel
Elastomers: EPDM
Isolation Valves: Butterfly, SS Stem/Disc, EPDM Seal
Manifolds: 304 Stainless Steel, ANSI-Flanged
Check Valves: Stainless Steel, Non-Slam, Plunger Type with EPDM Seal
Mechanical Seal: Type 21
Pressure Transducers: 316 Stainless Steel
Pressure Gauges: 304/316 Stainless Steel
System Base: Plated Steel
Vibration Isolators: Neoprene, Height-Adjustable

Motor Data

Motor Power Supply: 3-575V
Enclosure: ODP
Efficiency: NEMA Premium
Horsepower/Pump: 20
Enclosure Material: Rolled Steel/Cast Iron
Motor Protection Class: IP54
Insulation Class: F

Hydraulic Data

Max Operating Pressure: 150 PSI
Max Inlet Pressure: 75 PSI
Min. Fluid Temp.: 40°F
Max Fluid Temp.: 140°F
Min. Ambient Temp.: 32°F
Max. Ambient Temp.: 104°F

Panel Info

Power Supply: 3-575
Enclosure: NEMA 12 (3R Available on Request)
Standard: Meets UL 508A
VFD's: Danfoss FC-101/FC-202

PLC Info

User Interface: 7" Color Touchscreen
Display Resolution: 800 x 480 Pixels
Supply Voltage: 24VDC
Max Current: 320mA @24V
Analog Inputs/Outputs: 9/2
Digital Inputs/Outputs: 18/17
Communications: ModBUS Standard (BacNET, LONWorks Optional)
Ethernet Port: RJ45 (10/100Mbps)
Additional Ports: USB 2.0, Micro-SD

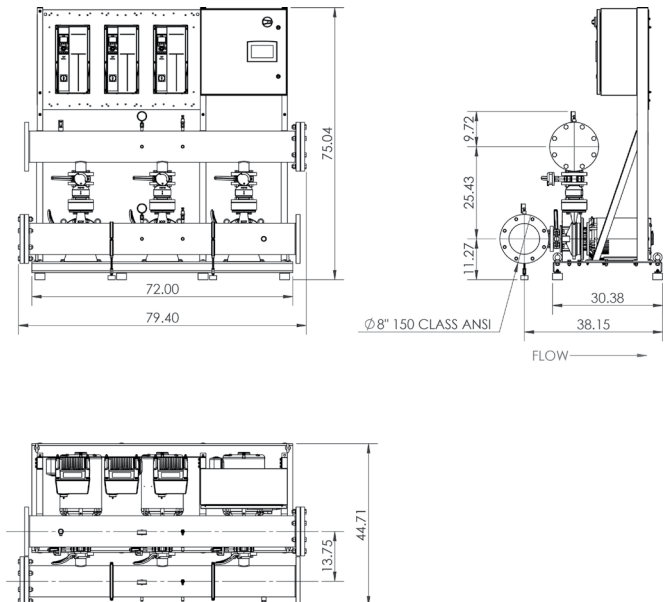
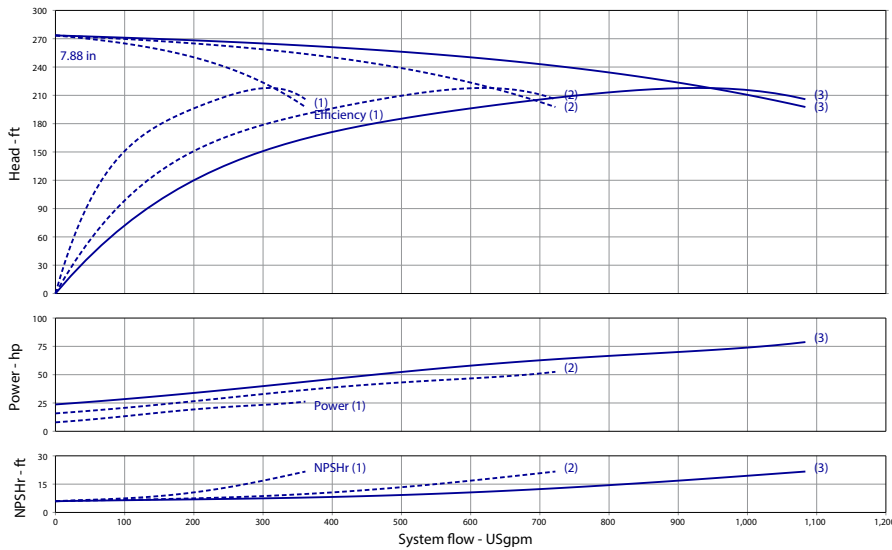


| Triplex Phase and Voltage | Full Flow Connection (in) | | | Half Flow Connection (in) | | |
|--------------------------------|---------------------------|----------|---------|---------------------------|-------|-------|
| | 3~208-230V | 3~460V | 3~575V | 3~575V | 3~460 | 3~575 |
| Panel Dimensions (HxWxD) | 24x24x8 | 30x39x12 | 24x24x8 | 24x24x8 | 4 | 4 |
| Full Load Amps (Per Pump) | 47 | 23.5 | 19 | 47 | 23.5 | 19 |
| Panel Weight (lbs) | 100 | 164.5 | 92 | 100 | 164.5 | 92 |
| External VFD Weight (ea - lbs) | 60 | X | 50 | 60 | X | 50 |
| Pump Weight (ea - lbs) | 225 | 225 | 225 | 225 | 225 | 225 |
| System Weight (lbs) | 1890 | 1765 | 1990 | 1755 | 1635 | 1855 |

Wilo-WiBooster

| | | Project: | | | | | |
|-------|------------------------|---------------|------|---------|-------|-------|---------|
| | | Engineer: | | | | | |
| | | Contractor: | | | | | |
| | | Submitted By: | | | Date: | | |
| | | Approved By: | | | Date: | | |
| Tag # | Model # | Flow | Head | HP/Pump | Cycle | Phase | Voltage |
| | WiBooster 3/328/A1/ODP | | | 25 | 60Hz | | |

Article Number: 3311294



Product Info

Brand: Wilo
Product Description: WiBooster 3/328/A1/310/ODP

Construction Materials

Pump Volute: 304 Stainless Steel
Impeller: 304 Stainless Steel
Shaft: 304 Stainless Steel
Elastomers: EPDM
Isolation Valves: Butterfly, SS Stem/Disc, EPDM Seal
Manifolds: 304 Stainless Steel, ANSI-Flanged
Check Valves: Stainless Steel, Non-Slam, Plunger Type with EPDM Seal
Mechanical Seal: Type 21
Pressure Transducers: 316 Stainless Steel
Pressure Gauges: 304/316 Stainless Steel
System Base: Plated Steel
Vibration Isolators: Neoprene, Height-Adjustable

Motor Data

Motor Power Supply: 3-575V
Enclosure: ODP
Efficiency: NEMA Premium
Horsepower/Pump: 25
Enclosure Material: Rolled Steel/Cast Iron
Motor Protection Class: IP54
Insulation Class: F

Hydraulic Data

Max Operating Pressure: 150 PSI
Max Inlet Pressure: 75 PSI
Min. Fluid Temp.: 40°F
Max Fluid Temp.: 140°F
Min. Ambient Temp.: 32°F
Max. Ambient Temp.: 104°F

Panel Info

Power Supply: 3-575
Enclosure: NEMA 12 (3R Available on Request)
Standard: Meets UL 508A
VFD's: Danfoss FC-101/FC-202

PLC Info

User Interface: 7" Color Touchscreen
Display Resolution: 800 x 480 Pixels
Supply Voltage: 24VDC
Max Current: 320mA @24V
Analog Inputs/Outputs: 9/2
Digital Inputs/Outputs: 18/17
Communications: ModBUS Standard (BacNET, LONWorks Optional)
Ethernet Port: RJ45 (10/100Mbps)
Additional Ports: USB 2.0, Micro-SD

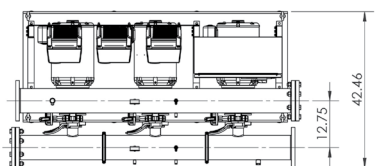
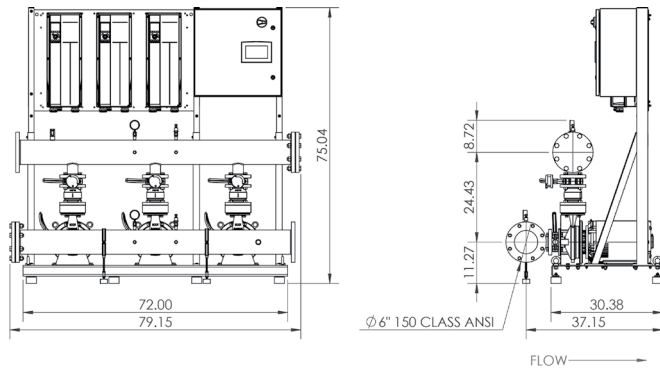
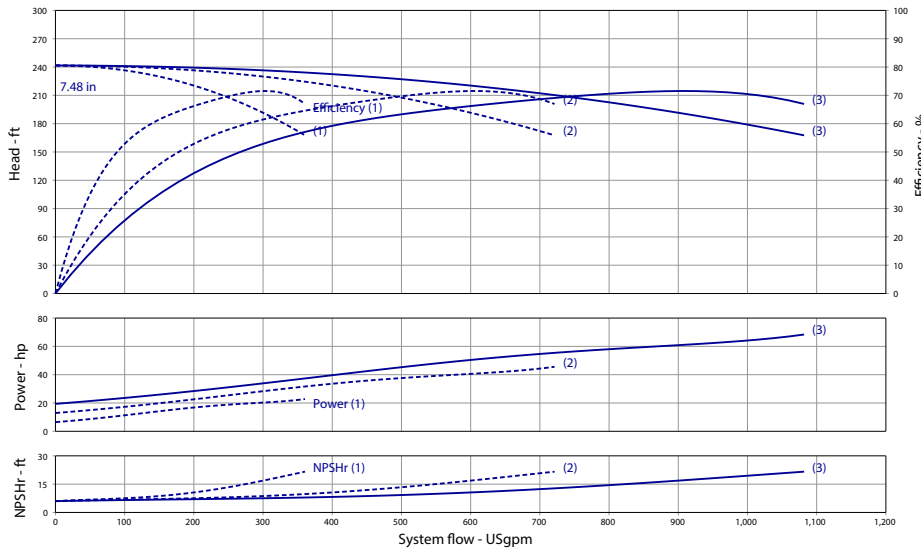


| Triplex Phase and Voltage | Full Flow Connection (in) | | | Half Flow Connection (in) | | |
|--------------------------------|---------------------------|----------|---------|---------------------------|-------|-------|
| | 3~208-230V | 3~460V | 3~575V | 3~575V | 3~460 | 3~575 |
| Panel Dimensions (HxWxD) | 24x24x8 | 30x39x12 | 24x24x8 | 24x24x8 | 4 | 4 |
| Full Load Amps (Per Pump) | 56 | 28 | 22.5 | 56 | 28 | 22.5 |
| Panel Weight (lbs) | 45 | 90 | 90 | 45 | 90 | 90 |
| External VFD Weight (ea - lbs) | 100 | X | 50 | 100 | X | 50 |
| Pump Weight (ea - lbs) | 325 | 325 | 325 | 325 | 325 | 325 |
| System Weight (lbs) | 2235 | 1865 | 2130 | 2105 | 1815 | 2000 |

Wilo-WiBooster

| | | Project: | | | | | |
|-------|------------------------|---------------|------|---------|-------|-------|---------|
| | | Engineer: | | | | | |
| | | Contractor: | | | | | |
| | | Submitted By: | | | Date: | | |
| | | Approved By: | | | Date: | | |
| Tag # | Model # | Flow | Head | HP/Pump | Cycle | Phase | Voltage |
| | WiBooster 3/328/B2/ODP | | | 20 | 60Hz | | |

Article Number: 3313254



Product Info

| | |
|---------------------|----------------------------|
| Brand | Wilo |
| Product Description | WiBooster 3/328/B2/300/ODP |

Construction Materials

| | |
|----------------------|--|
| Pump Volute | 304 Stainless Steel |
| Impeller | 304 Stainless Steel |
| Shaft | 304 Stainless Steel |
| Elastomers | EPDM |
| Isolation Valves | Butterfly, SS Stem/Disc, EPDM Seal |
| Manifolds | 304 Stainless Steel, ANSI-Flanged |
| Check Valves | Stainless Steel, Non-Slam, Plunger Type with EPDM Seal |
| Mechanical Seal | Type 21 |
| Pressure Transducers | 316 Stainless Steel |
| Pressure Gauges | 304/316 Stainless Steel |
| System Base | Plated Steel |
| Vibration Isolators | Neoprene, Height-Adjustable |

Motor Data

| | |
|------------------------|------------------------|
| Motor Power Supply | 3-208-230V |
| Enclosure | ODP |
| Efficiency | NEMA Premium |
| Horsepower/Pump | 20 |
| Enclosure Material | Rolled Steel/Cast Iron |
| Motor Protection Class | IP54 |
| Insulation Class | F |

Hydraulic Data

| | |
|------------------------|---------|
| Max Operating Pressure | 150 PSI |
| Max Inlet Pressure | 75 PSI |
| Min. Fluid Temp. | 40°F |
| Max Fluid Temp. | 140°F |
| Min. Ambient Temp | 32°F |
| Max. Ambient Temp | 104°F |

Panel Info

| | |
|--------------|-----------------------------------|
| Power Supply | 3-208-230 |
| Enclosure | NEMA 12 (3R Available on Request) |
| Standard | Meets UL 508A |
| VFD's | Danfoss FC-101/FC-202 |

PLC Info

| | |
|------------------------|---|
| User Interface | 7" Color Touchscreen |
| Display Resolution | 800 x 480 Pixels |
| Supply Voltage | 24VDC |
| Max Current | 320mA @24V |
| Analog Inputs/Outputs | 9/2 |
| Digital Inputs/Outputs | 18/17 |
| Communications | ModBUS Standard (BacNET, LONWorks Optional) |
| Ethernet Port | RJ45 (10/100Mbps) |
| Additional Ports | USB 2.0, Micro-SD |

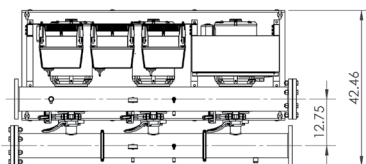
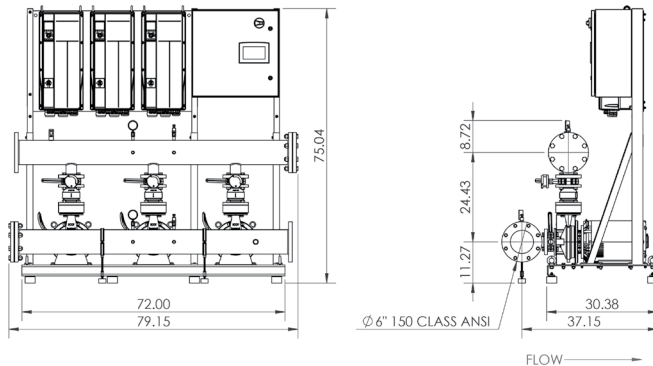
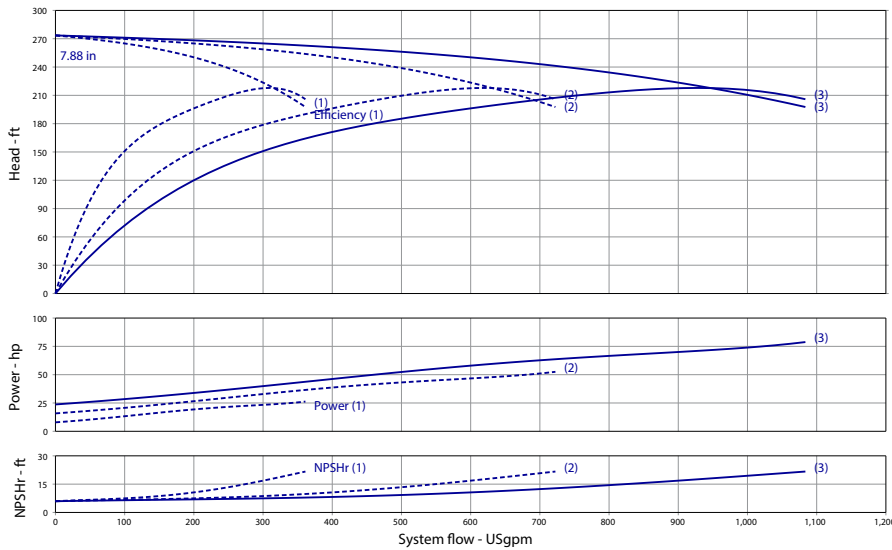


| Triplex Phase and Voltage | Full Flow Connection (in) | | | Half Flow Connection (in) | | |
|--------------------------------|---------------------------|----------|---------|---------------------------|-------|-------|
| | 3-208-230V | 3-460V | 3-575V | 3-575V | 3-460 | 3-575 |
| Panel Dimensions (HxWxD) | 24x24x8 | 30x39x12 | 24x24x8 | 24x24x8 | 4 | 4 |
| Full Load Amps (Per Pump) | 47 | 23.5 | 19 | 47 | 23.5 | 19 |
| Panel Weight (lbs) | 100 | 164.5 | 92 | 100 | 164.5 | 92 |
| External VFD Weight (ea - lbs) | 60 | X | 50 | 60 | X | 50 |
| Pump Weight (ea - lbs) | 225 | 225 | 225 | 225 | 225 | 225 |
| System Weight (lbs) | 1890 | 1765 | 1990 | 1755 | 1635 | 1855 |

Wilo-WiBooster

| | | Project: | | | | | |
|-------|------------------------|---------------|------|---------|-------|-------|---------|
| | | Engineer: | | | | | |
| | | Contractor: | | | | | |
| | | Submitted By: | | | Date: | | |
| | | Approved By: | | | Date: | | |
| Tag # | Model # | Flow | Head | HP/Pump | Cycle | Phase | Voltage |
| | WiBooster 3/328/A2/ODP | | | 25 | 60Hz | | |

Article Number: 3313255



Product Info

Brand: Wilo
Product Description: WiBooster 3/328/A2/310/ODP

Construction Materials

Pump Volute: 304 Stainless Steel
Impeller: 304 Stainless Steel
Shaft: 304 Stainless Steel
Elastomers: EPDM
Isolation Valves: Butterfly, SS Stem/Disc, EPDM Seal
Manifolds: 304 Stainless Steel, ANSI-Flanged
Check Valves: Stainless Steel, Non-Slam, Plunger Type with EPDM Seal
Mechanical Seal: Type 21
Pressure Transducers: 316 Stainless Steel
Pressure Gauges: 304/316 Stainless Steel
System Base: Plated Steel
Vibration Isolators: Neoprene, Height-Adjustable

Motor Data

Motor Power Supply: 3-208-230V
Enclosure: ODP
Efficiency: NEMA Premium
Horsepower/Pump: 25
Enclosure Material: Rolled Steel/Cast Iron
Motor Protection Class: IP54
Insulation Class: F

Hydraulic Data

Max Operating Pressure: 150 PSI
Max Inlet Pressure: 75 PSI
Min. Fluid Temp.: 40°F
Max Fluid Temp.: 140°F
Min. Ambient Temp.: 32°F
Max. Ambient Temp.: 104°F

Panel Info

Power Supply: 3-208-230
Enclosure: NEMA 12 (3R Available on Request)
Standard: Meets UL 508A
VFD's: Danfoss FC-101/FC-202

PLC Info

User Interface: 7" Color Touchscreen
Display Resolution: 800 x 480 Pixels
Supply Voltage: 24VDC
Max Current: 320mA @24V
Analog Inputs/Outputs: 9/2
Digital Inputs/Outputs: 18/17
Communications: ModBUS Standard (BacNET, LONWorks Optional)
Ethernet Port: RJ45 (10/100Mbps)
Additional Ports: USB 2.0, Micro-SD

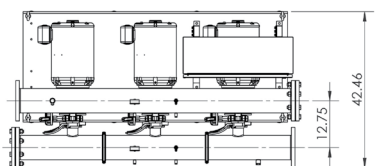
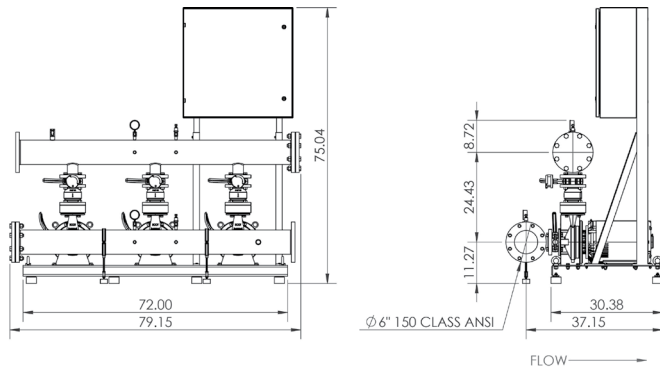
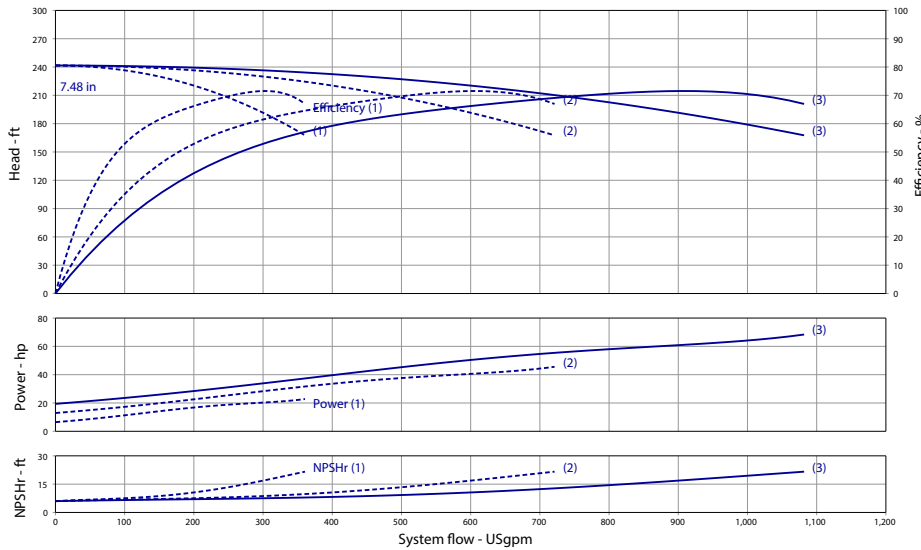


| Triplex Phase and Voltage | Full Flow Connection (in) | | | Half Flow Connection (in) | | |
|--------------------------------|---------------------------|----------|---------|---------------------------|-------|-------|
| | 3-208-230V | 3-460V | 3-575V | 3-575V | 3-460 | 3-575 |
| Panel Dimensions (HxWxD) | 24x24x8 | 30x39x12 | 24x24x8 | 24x24x8 | 4 | 4 |
| Full Load Amps (Per Pump) | 56 | 28 | 22.5 | 56 | 28 | 22.5 |
| Panel Weight (lbs) | 45 | 90 | 90 | 45 | 90 | 90 |
| External VFD Weight (ea - lbs) | 100 | X | 50 | 100 | X | 50 |
| Pump Weight (ea - lbs) | 325 | 325 | 325 | 325 | 325 | 325 |
| System Weight (lbs) | 2235 | 1865 | 2130 | 2105 | 1815 | 2000 |

Wilo-WiBooster

| | | Project: | | | | | |
|-------|------------------------|---------------|------|---------|-------|-------|---------|
| | | Engineer: | | | | | |
| | | Contractor: | | | | | |
| | | Submitted By: | | | Date: | | |
| | | Approved By: | | | Date: | | |
| Tag # | Model # | Flow | Head | HP/Pump | Cycle | Phase | Voltage |
| | WiBooster 3/328/B2/ODP | | | 20 | 60Hz | | |

Article Number: 3313271



Product Info

| | |
|---------------------|----------------------------|
| Brand | Wilo |
| Product Description | WiBooster 3/328/B2/300/ODP |

Construction Materials

| | |
|----------------------|--|
| Pump Volute | 304 Stainless Steel |
| Impeller | 304 Stainless Steel |
| Shaft | 304 Stainless Steel |
| Elastomers | EPDM |
| Isolation Valves | Butterfly, SS Stem/Disc, EPDM Seal |
| Manifolds | 304 Stainless Steel, ANSI-Flanged |
| Check Valves | Stainless Steel, Non-Slam, Plunger Type with EPDM Seal |
| Mechanical Seal | Type 21 |
| Pressure Transducers | 316 Stainless Steel |
| Pressure Gauges | 304/316 Stainless Steel |
| System Base | Plated Steel |
| Vibration Isolators | Neoprene, Height-Adjustable |

Motor Data

| | |
|------------------------|------------------------|
| Motor Power Supply | 3-460V |
| Enclosure | ODP |
| Efficiency | NEMA Premium |
| Horsepower/Pump | 20 |
| Enclosure Material | Rolled Steel/Cast Iron |
| Motor Protection Class | IP54 |
| Insulation Class | F |

Hydraulic Data

| | |
|------------------------|---------|
| Max Operating Pressure | 150 PSI |
| Max Inlet Pressure | 75 PSI |
| Min. Fluid Temp. | 40°F |
| Max Fluid Temp. | 140°F |
| Min. Ambient Temp | 32°F |
| Max. Ambient Temp | 104°F |

Panel Info

| | |
|--------------|-----------------------------------|
| Power Supply | 3-460 |
| Enclosure | NEMA 12 (3R Available on Request) |
| Standard | Meets UL 508A |
| VFD's | Danfoss FC-101/FC-202 |

PLC Info

| | |
|------------------------|---|
| User Interface | 7" Color Touchscreen |
| Display Resolution | 800 x 480 Pixels |
| Supply Voltage | 24VDC |
| Max Current | 320mA @24V |
| Analog Inputs/Outputs | 9/2 |
| Digital Inputs/Outputs | 18/17 |
| Communications | ModBUS Standard (BacNET, LONWorks Optional) |
| Ethernet Port | RJ45 (10/100Mbps) |
| Additional Ports | USB 2.0, Micro-SD |

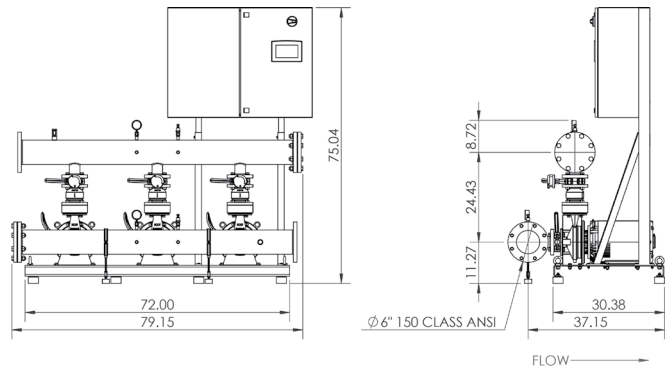
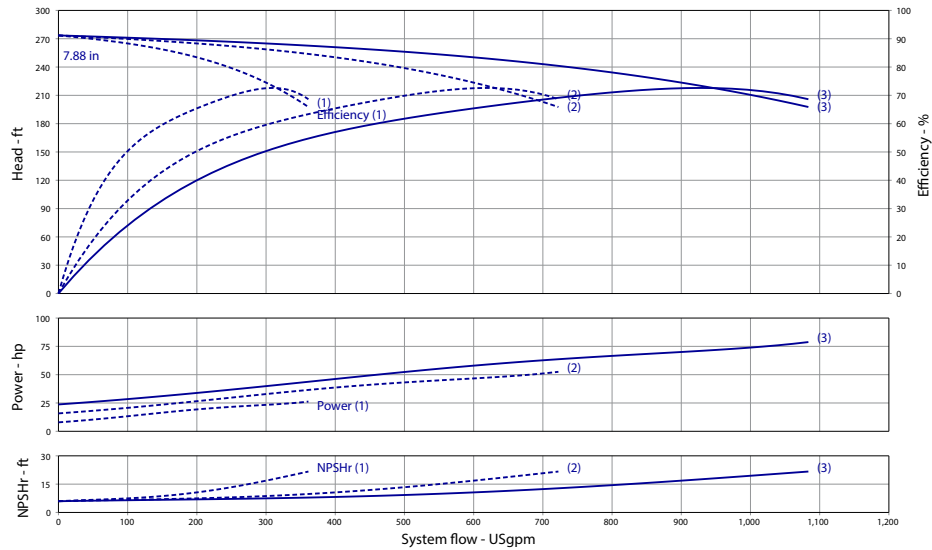


| Triplex Phase and Voltage | Full Flow Connection (in) | | | Half Flow Connection (in) | | |
|--------------------------------|---------------------------|----------|---------|---------------------------|-------|-------|
| | 3~208-230V | 3~460V | 3~575V | 3~575V | 3~460 | 3~575 |
| Panel Dimensions (HxWxD) | 24x24x8 | 30x39x12 | 24x24x8 | 24x24x8 | 4 | 4 |
| Full Load Amps (Per Pump) | 47 | 23.5 | 19 | 47 | 23.5 | 19 |
| Panel Weight (lbs) | 100 | 164.5 | 92 | 100 | 164.5 | 92 |
| External VFD Weight (ea - lbs) | 60 | X | 50 | 60 | X | 50 |
| Pump Weight (ea - lbs) | 225 | 225 | 225 | 225 | 225 | 225 |
| System Weight (lbs) | 1890 | 1765 | 1990 | 1755 | 1635 | 1855 |

Wilo-WiBooster

| | | Project: | | | | | |
|-------|------------------------|---------------|------|---------|-------|-------|---------|
| | | Engineer: | | | | | |
| | | Contractor: | | | | | |
| | | Submitted By: | | | Date: | | |
| | | Approved By: | | | Date: | | |
| Tag # | Model # | Flow | Head | HP/Pump | Cycle | Phase | Voltage |
| | WiBooster 3/328/A2/ODP | | | 25 | 60Hz | | |

Article Number: 3313272



| Triplex Phase and Voltage | Full Flow Connection (in) | | | Half Flow Connection (in) | | |
|--------------------------------|---------------------------|----------|---------|---------------------------|-------|-------|
| | 3~208-230V | 3~460V | 3~575V | 3~575V | 3~460 | 3~575 |
| Panel Dimensions (HxWxD) | 24x24x8 | 30x39x12 | 24x24x8 | 24x24x8 | 4 | 4 |
| Full Load Amps (Per Pump) | 56 | 28 | 22.5 | 56 | 28 | 22.5 |
| Panel Weight (lbs) | 45 | 90 | 90 | 45 | 90 | 90 |
| External VFD Weight (ea - lbs) | 100 | X | 50 | 100 | X | 50 |
| Pump Weight (ea - lbs) | 325 | 325 | 325 | 325 | 325 | 325 |
| System Weight (lbs) | 2235 | 1865 | 2130 | 2105 | 1815 | 2000 |

Product Info

Brand: Wilo
Product Description: WiBooster 3/328/A2/310/ODP

Construction Materials

Pump Volute: 304 Stainless Steel
Impeller: 304 Stainless Steel
Shaft: 304 Stainless Steel
Elastomers: EPDM
Isolation Valves: Butterfly, SS Stem/Disc, EPDM Seal
Manifolds: 304 Stainless Steel, ANSI-Flanged
Check Valves: Stainless Steel, Non-Slam, Plunger Type with EPDM Seal
Mechanical Seal: Type 21
Pressure Transducers: 316 Stainless Steel
Pressure Gauges: 304/316 Stainless Steel
System Base: Plated Steel
Vibration Isolators: Neoprene, Height-Adjustable

Motor Data

Motor Power Supply: 3-460V
Enclosure: ODP
Efficiency: NEMA Premium
Horsepower/Pump: 25
Enclosure Material: Rolled Steel/Cast Iron
Motor Protection Class: IP54
Insulation Class: F

Hydraulic Data

Max Operating Pressure: 150 PSI
Max Inlet Pressure: 75 PSI
Min. Fluid Temp.: 40°F
Max Fluid Temp.: 140°F
Min. Ambient Temp.: 32°F
Max. Ambient Temp.: 104°F

Panel Info

Power Supply: 3-460
Enclosure: NEMA 12 (3R Available on Request)
Standard: Meets UL 508A
VFD's: Danfoss FC-101/FC-202

PLC Info

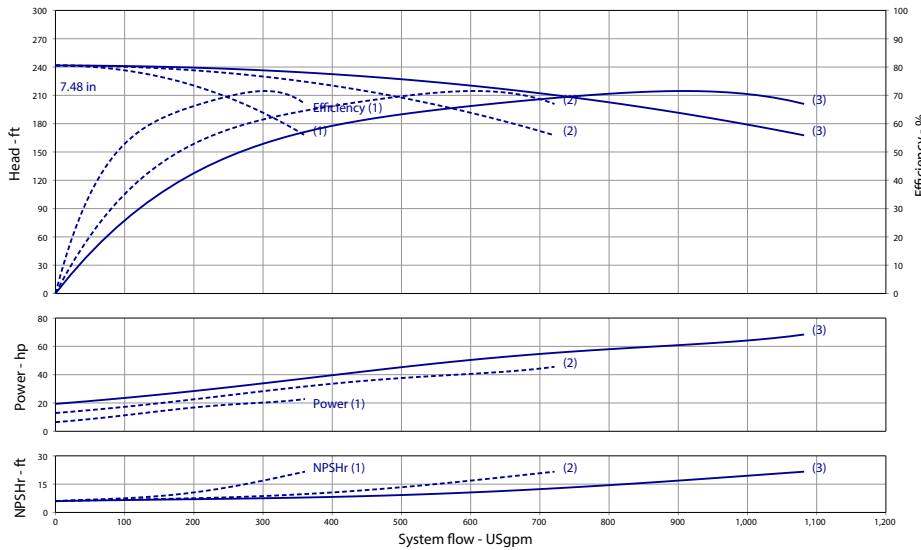
User Interface: 7" Color Touchscreen
Display Resolution: 800 x 480 Pixels
Supply Voltage: 24VDC
Max Current: 320mA @24V
Analog Inputs/Outputs: 9/2
Digital Inputs/Outputs: 18/17
Communications: ModBUS Standard (BacNET, LONWorks Optional)
Ethernet Port: RJ45 (10/100Mbps)
Additional Ports: USB 2.0, Micro-SD



Wilo-WiBooster

| | | Project: | | | | | |
|-------|------------------------|---------------|------|---------|-------|-------|---------|
| | | Engineer: | | | | | |
| | | Contractor: | | | | | |
| | | Submitted By: | | | Date: | | |
| | | Approved By: | | | Date: | | |
| Tag # | Model # | Flow | Head | HP/Pump | Cycle | Phase | Voltage |
| | WiBooster 3/328/B2/ODP | | | 20 | 60Hz | | |

Article Number: 3323575



Product Info

| | |
|---------------------|----------------------------|
| Brand | Wilo |
| Product Description | WiBooster 3/328/B2/300/ODP |

Construction Materials

| | |
|----------------------|--|
| Pump Volute | 304 Stainless Steel |
| Impeller | 304 Stainless Steel |
| Shaft | 304 Stainless Steel |
| Elastomers | EPDM |
| Isolation Valves | Butterfly, SS Stem/Disc, EPDM Seal |
| Manifolds | 304 Stainless Steel, ANSI-Flanged |
| Check Valves | Stainless Steel, Non-Slam, Plunger Type with EPDM Seal |
| Mechanical Seal | Type 21 |
| Pressure Transducers | 316 Stainless Steel |
| Pressure Gauges | 304/316 Stainless Steel |
| System Base | Plated Steel |
| Vibration Isolators | Neoprene, Height-Adjustable |

Motor Data

| | |
|------------------------|------------------------|
| Motor Power Supply | 3-575V |
| Enclosure | ODP |
| Efficiency | NEMA Premium |
| Horsepower/Pump | 20 |
| Enclosure Material | Rolled Steel/Cast Iron |
| Motor Protection Class | IP54 |
| Insulation Class | F |

Hydraulic Data

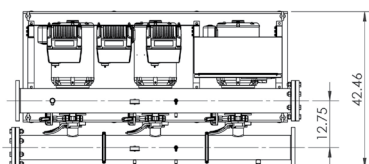
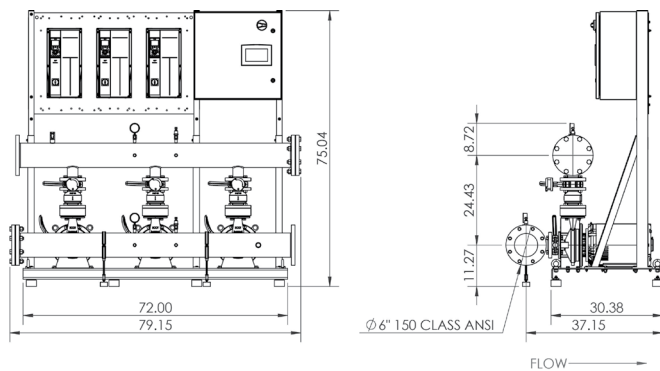
| | |
|------------------------|---------|
| Max Operating Pressure | 150 PSI |
| Max Inlet Pressure | 75 PSI |
| Min. Fluid Temp. | 40°F |
| Max Fluid Temp. | 140°F |
| Min. Ambient Temp | 32°F |
| Max. Ambient Temp | 104°F |

Panel Info

| | |
|--------------|-----------------------------------|
| Power Supply | 3-575 |
| Enclosure | NEMA 12 (3R Available on Request) |
| Standard | Meets UL 508A |
| VFD's | Danfoss FC-101/FC-202 |

PLC Info

| | |
|------------------------|---|
| User Interface | 7" Color Touchscreen |
| Display Resolution | 800 x 480 Pixels |
| Supply Voltage | 24VDC |
| Max Current | 320mA @24V |
| Analog Inputs/Outputs | 9/2 |
| Digital Inputs/Outputs | 18/17 |
| Communications | ModBUS Standard (BacNET, LONWorks Optional) |
| Ethernet Port | RJ45 (10/100Mbps) |
| Additional Ports | USB 2.0, Micro-SD |



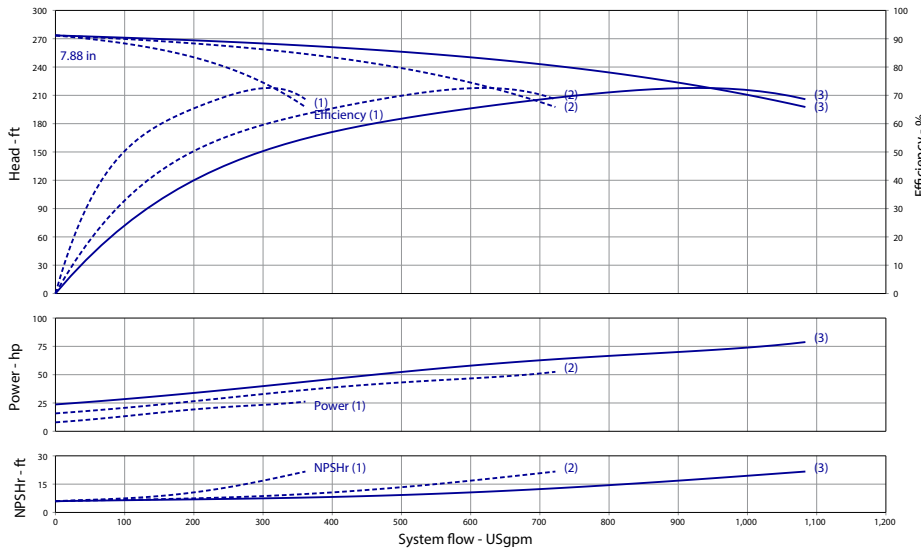
| Triplex Phase and Voltage | Full Flow Connection (in) | | | Half Flow Connection (in) | | |
|--------------------------------|---------------------------|----------|---------|---------------------------|-------|-------|
| | 3~208-230V | 3~460V | 3~575V | 3~575V | 3~460 | 3~575 |
| Panel Dimensions (HxWxD) | 24x24x8 | 30x39x12 | 24x24x8 | 24x24x8 | 4 | 4 |
| Full Load Amps (Per Pump) | 47 | 23.5 | 19 | 47 | 23.5 | 19 |
| Panel Weight (lbs) | 100 | 164.5 | 92 | 100 | 164.5 | 92 |
| External VFD Weight (ea - lbs) | 60 | X | 50 | 60 | X | 50 |
| Pump Weight (ea - lbs) | 225 | 225 | 225 | 225 | 225 | 225 |
| System Weight (lbs) | 1890 | 1765 | 1990 | 1755 | 1635 | 1855 |



Wilo-WiBooster

| | | Project: | | | | | |
|-------|------------------------|---------------|------|---------|-------|-------|---------|
| | | Engineer: | | | | | |
| | | Contractor: | | | | | |
| | | Submitted By: | | | Date: | | |
| | | Approved By: | | | Date: | | |
| Tag # | Model # | Flow | Head | HP/Pump | Cycle | Phase | Voltage |
| | WiBooster 3/328/A2/ODP | | | 25 | 60Hz | | |

Article Number: 3323575



Product Info

| | |
|---------------------|----------------------------|
| Brand | Wilo |
| Product Description | WiBooster 3/328/A2/310/ODP |

Construction Materials

| | |
|----------------------|--|
| Pump Volute | 304 Stainless Steel |
| Impeller | 304 Stainless Steel |
| Shaft | 304 Stainless Steel |
| Elastomers | EPDM |
| Isolation Valves | Butterfly, SS Stem/Disc, EPDM Seal |
| Manifolds | 304 Stainless Steel, ANSI-Flanged |
| Check Valves | Stainless Steel, Non-Slam, Plunger Type with EPDM Seal |
| Mechanical Seal | Type 21 |
| Pressure Transducers | 316 Stainless Steel |
| Pressure Gauges | 304/316 Stainless Steel |
| System Base | Plated Steel |
| Vibration Isolators | Neoprene, Height-Adjustable |

Motor Data

| | |
|------------------------|------------------------|
| Motor Power Supply | 3-575V |
| Enclosure | ODP |
| Efficiency | NEMA Premium |
| Horsepower/Pump | 25 |
| Enclosure Material | Rolled Steel/Cast Iron |
| Motor Protection Class | IP54 |
| Insulation Class | F |

Hydraulic Data

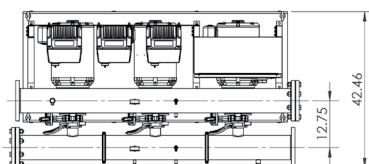
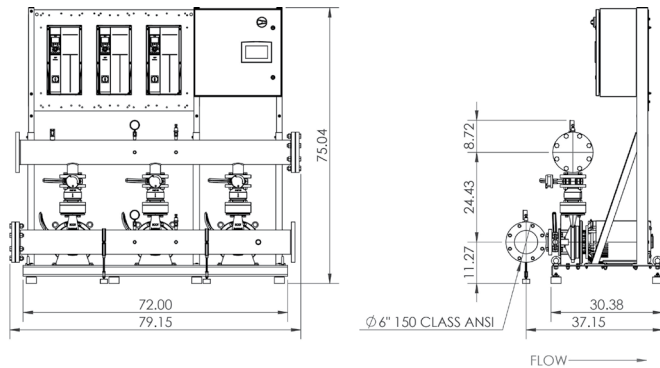
| | |
|------------------------|---------|
| Max Operating Pressure | 150 PSI |
| Max Inlet Pressure | 75 PSI |
| Min. Fluid Temp. | 40°F |
| Max Fluid Temp. | 140°F |
| Min. Ambient Temp | 32°F |
| Max. Ambient Temp | 104°F |

Panel Info

| | |
|--------------|-----------------------------------|
| Power Supply | 3-575 |
| Enclosure | NEMA 12 (3R Available on Request) |
| Standard | Meets UL 508A |
| VFD's | Danfoss FC-101/FC-202 |

PLC Info

| | |
|------------------------|---|
| User Interface | 7" Color Touchscreen |
| Display Resolution | 800 x 480 Pixels |
| Supply Voltage | 24VDC |
| Max Current | 320mA @24V |
| Analog Inputs/Outputs | 9/2 |
| Digital Inputs/Outputs | 18/17 |
| Communications | ModBUS Standard (BacNET, LONWorks Optional) |
| Ethernet Port | RJ45 (10/100Mbps) |
| Additional Ports | USB 2.0, Micro-SD |



| Triplex Phase and Voltage | Full Flow Connection (in) | | | Half Flow Connection (in) | | |
|--------------------------------|---------------------------|----------|---------|---------------------------|-------|-------|
| | 3~208-230V | 3~460V | 3~575V | 3~575V | 3~460 | 3~575 |
| Panel Dimensions (HxWxD) | 24x24x8 | 30x39x12 | 24x24x8 | 24x24x8 | 4 | 4 |
| Full Load Amps (Per Pump) | 56 | 28 | 22.5 | 56 | 28 | 22.5 |
| Panel Weight (lbs) | 45 | 90 | 90 | 45 | 90 | 90 |
| External VFD Weight (ea - lbs) | 100 | X | 50 | 100 | X | 50 |
| Pump Weight (ea - lbs) | 325 | 325 | 325 | 325 | 325 | 325 |
| System Weight (lbs) | 2235 | 1865 | 2130 | 2105 | 1815 | 2000 |

