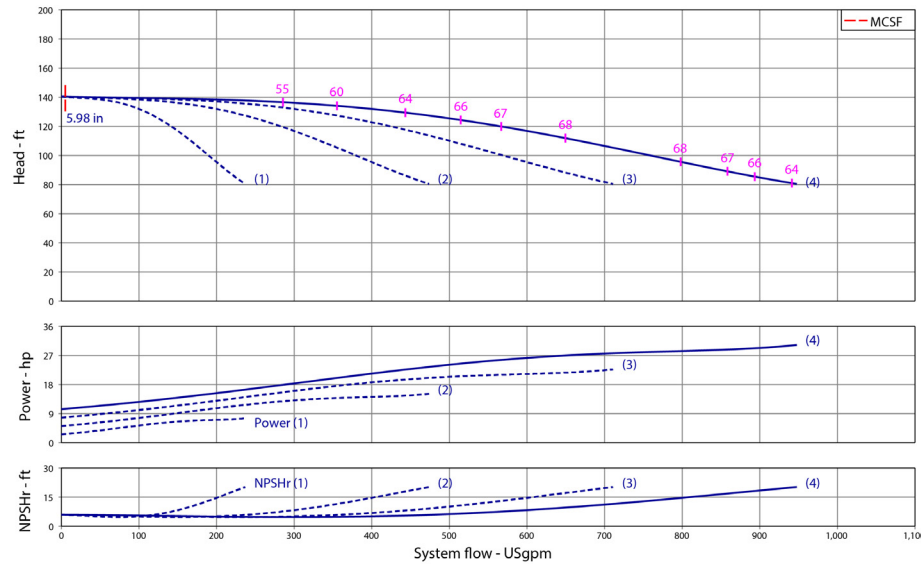


Wilo-WiBooster

		Project:					
		Engineer:					
		Contractor:					
		Submitted By:			Date:		
		Approved By:			Date:		
Tag #	Model #	Flow	Head	HP/Pump	Cycle	Phase	Voltage
	WiBooster 4/324/B			7.5	60Hz		



Product Info

Brand: Wilo
Product Description: WiBooster 4/324/B

Construction Materials

Pump Volute: 304 Stainless Steel
Impeller: 304 Stainless Steel
Shaft: 304 Stainless Steel
Elastomers: EPDM
Isolation Valves: Butterfly, SS Stem/Disc, EPDM Seal
Manifolds: 304 Stainless Steel, ANSI-Flanged
Check Valves: Stainless Steel, Non-Slam, Plunger Type with EPDM Seal
Mechanical Seal: Type 21
Pressure Transducers: 316 Stainless Steel
Pressure Gauges: 304/316 Stainless Steel
System Base: Plated Steel
Vibration Isolators: Neoprene, Height-Adjustable

Motor Data

Motor Power Supply: 3~208-230/460/575V
Enclosure: ODP/TEFC
Efficiency: NEMA Premium
Horsepower/Pump: 7.5
Enclosure Material: Rolled Steel/Cast Iron
Motor Protection Class: IP54
Insulation Class: F

Hydraulic Data

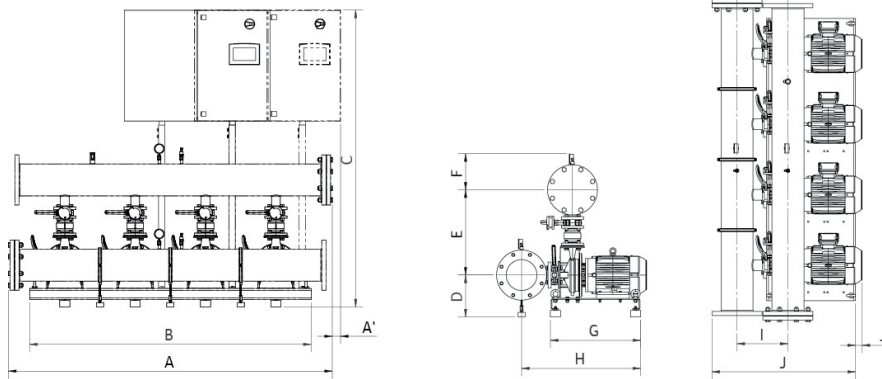
Max Operating Pressure: 150 PSI
Max Inlet Pressure: 75 PSI
Min. Fluid Temp: 40°F
Max Fluid Temp: 140°F
Min. Ambient Temp: 32°F
Max. Ambient Temp: 104°F

Panel Info

Power Supply: 1~230, 3~208-230/460/575
Enclosure: NEMA 12 (3R Available on Request)
Standard: Meets UL 508A
VFD's: Danfoss FC-51 / FC-101

PLC Info

User Interface: 7" Color Touchscreen
Display Resolution: 800 x 480 Pixels
Supply Voltage: 24VDC
Max Current: 320mA @24V
Analog Inputs/Outputs: 9/2
Digital Inputs/Outputs: 18/17
Communications: ModBUS Standard (BacNET, LONWorks Optional)
Ethernet Port: RJ45 (10/100Mbps)
Additional Ports: USB 2.0, Micro-SD



Dimensions

System Connection (150#)	Full Flow Connection (in)				Half Flow Connection (in)			
	1-3-230	3-208-230	3-460	3-575	1-3-230	3-208-230	3-460	3-575
A	87.4	87.4	87.4	87.4	87.2	87.2	87.2	87.2
A ₁	2.2	x	x	x	2.3	x	x	x
B	76	76	76	76	76	76	76	76
C	75	75	75	75	75	75	75	75
D	10.2	10.2	10.2	10.2	10.2	10.2	10.2	10.2
E	23.2	23.2	23.2	23.2	22.2	22.2	22.2	22.2
F	9.7	9.7	9.7	11	8.7	8.7	8.7	10
G	24.4	24.4	24.4	24.4	24.4	24.4	24.4	24.4
H	32.1	32.1	32.1	32.1	31.1	31.1	31.1	31.1
I	13	13	13	13	12	12	12	12
J	38.7	38.7	38.7	38.7	36.4	36.4	36.4	36.4
J ₁	x	x	x	x	x	x	x	x
Panel Dimensions (HxWxD)	30x39x12	30X30X10	30X30X10	30X30X10	30x39x12	30X30X10	30X30X10	30X30X10
Full Load Amps (per pump)	18.7-17.0	18.7-17.0	8.5	6.8	18.7-17.0	18.7-17.0	8.5	6.8
Panel Weight (lbs)	180.8	180.8	139.0	190.0	180.8	180.8	139.0	190.0
Pump Weight (ea - lbs)	132	132	132	132	132	132	132	132
System Weight (lbs)	1590	1590	1550	1600	1460	1460	1435	1470

Approval Stamp