

Pioneering for You

wilo

*Industry General*

# Industrial Equipment Manufacturer

## Applications and Products



## Who we are

Founded in 1872 as Kupfer- und Messingwarenfabrik in Dortmund, Wilo has evolved from being a local specialist to a global player. As the majority shareholder with a stake of approximately 90 percent, the Caspar Ludwig Opländer Foundation ensures the company's continuity and independence. An uncompromising customer-driven mind-set, immediate market proximity and, in particular, our culture of innovation have made us who we are: one of the worldwide leading manufacturers of high-tech pumps and pump systems.

## What we are

Wilo is a premium supplier in the field of building services, water management and industry. This leading position drives us to maintain our superiority. For our customers, we make complex technologies user-friendly, simple to operate energy-efficient and powerful. The main focus of our activities is therefore on the people. We offer them outstanding products, system solutions and services. In this spirit, our brand promise "Pioneering for You" stands for maximum quality of life.



## WILO Mather and Platt Pumps Pvt. Ltd.

Mather and Platt started its Indian operations in 1913 from Kolkata, and has been fulfilling the need of water supply for more than 100 years in India for segments like building services, water management and industries.

We started our operation at Chinchwad works in Pune, Maharashtra in year 1959.

Mather and Platt Pump Ltd became part of WILO SE in the year 2005

And in year 2014, WILO Mather and Platt Pumps Ltd. Become WILO Mather and Platt Pumps Pvt. Ltd.

In the year 2009 a new state of art manufacturing facility covering over approx. 6000 sq. meters has been built at Kolhapur around 260 km from Pune to manufacture the latest high efficiency products of Wilo India.

The Pune & Kolhapur plants have acquired ISO 9001, ISO 14001 and OSHAS 18001 and all products are CE certified.



Kolhapur Plant



Chinchwad, Pune Plant



# Heating

Wilo Provides the most High Efficient Solution for Heating Application. Our expertise and Global presence in the Respective application gives us an opportunity to serve our clients as a solution provider

**Applications**

- Boiler feed
- Fermenter
- Room Heating
- HVAC
- Sanitary Water Heating
- Industrial Process Heating
- Dehumidification
- Adiabatic Chillers

**Benefits:**

- Low Energy life cycle cost
- Low maintenance
- Multi operational Models
- Precised controlling



**Features**

- High surface finishing of the hydraulics.
- High Efficient Hydraulics.
- Adapted motor, mech. Seal & Cartridge for low temperature running.
- Optimized size for space adaptability.
- High Efficient Motors

**Application Matrix**

Boiler Feed	Fermenter	Room Heating	HVAC	Sanitary Water Heating	Industrial Process heating	De-humidification	Adiabatic Chillers
MVI	TOP S	TOP S	MVI	TOP S	MISO/PISO/NL	STAR	STAR
Helix	STAR	STAR	IL	STAR	STAR	TOP S	TOP S
MHI	MHIL	Stratos	MHIL		TOP S		
MHIL	MHIL		Helix				
RN							

## Pump Range:



### Stratos / TOP S / Star

Volume flow	upto 100 m <sup>3</sup> /hr
Delivery head	upto 18 m
Temperature	upto 110°C

#### Features

- Threaded or flange connection, EC motor and automatic power adjustment.
- Available in single/three phase.
- Combination flanges PN6/PN10 thermal insulation shells as standard for heating applications.
- Red-button technology for easy operation.



### MVI / Helix

Volume flow	upto 155 m <sup>3</sup> /hr
Delivery head	upto 235 m
Temperature	upto 100°C

#### Features

- Vertical inline mounting, available in 2 to 24 stages
- Antifriction bearing, mechanical seal with EPDM/Viton elastomers
- Supplied with high efficiency VFD compatible motor (optional)
- Option of Flame proof motor



### MISO / PISO / NL

Volume flow	upto 750 m <sup>3</sup> /hr
Delivery head	upto 170 m
Temperature	upto 120°C

#### Features

- End Suction top discharge, back pullout design
- Confirms to ISO 2858 / EN 733
- Mechanical seal/gland packing and grease/oil lubricated bearing
- Prime Mover- Motor/Engine



### IL

Volume flow	upto 900 m <sup>3</sup> /hr
Delivery head	upto 110 m
Temperature	upto 140°C

#### Features

- Closed coupled design, Vertical inline mounting
- Low pressure inline pumps
- Single stage
- Mechanical seal
- 3 Phase standard high efficient IEC IP 55 motors



### MHI / MHIL

Volume flow	upto 25 m <sup>3</sup> /hr
Delivery head	upto 70 m
Temperature	upto 110°C

#### Features

- Stages-2 to 7
- Mechanical seal with EPDM/Viton elastomers



## Circulation

Wilo Delivers Continues High Efficient Solution for Circulation Application. The Reliable solution for 24X7 operation comes to you with High level of Accuracy and Perfection.

### Applications

- Coolant Recirculation
- Server Cooling
- Solar Panel Recirculation
- Heat Exchangers
- Air To Water Generators
- Industrial Process
- Chillers
- Fermenter

### Benefits:

- Low Energy life cycle cost
- Low maintenance
- Multi operational Models
- Precised controlling



### Features

- High surface finishing of the hydraulics.
- High Efficient Hydraulics.
- Adapted motor, mech. Seal & Cartridge for low temperature running.
- Optimized size for space adaptability.
- High Efficient Motors

### Application Matrix

Coolant Recirculation	Server Cooling	Solar Panel Circulation	Heat Exchanger	Air To water Generator	Industrial Process	Chillers	Pharma Equipments
IL	STRATOS	TOP S	IL	TOP S	IL	BAC	TOP S
MVI	TOP S	STAR	TOP S	STAR	HMHIL	MHIL	STAR
MHIL	STAR		STAR	HMHIL	MVI / Helix		MHI
MHI			MVI		STAR		MHIL
Helix			Helix		TOP S		

## Pump Range:



### Stratos /TOP S /Star

Volume flow	upto 100 m <sup>3</sup> /hr
Delivery head	upto 18 m
Temperature	upto 110°C

#### Features

- Threaded or flange connection, EC motor and automatic power adjustment.
- Available in single/three phase.
- Combination flanges PN6/PN10 thermal insulation shells as standard for heating applications.
- Red-button technology for easy operation.



### MVI /Helix

Volume flow	upto 155 m <sup>3</sup> /hr
Delivery head	upto 235 m
Temperature	upto 100°C

#### Features

- Vertical inline mounting, available in 2 to 24 stages
- Antifriction bearing, mechanical seal with EPDM/Viton elastomers
- Supplied with high efficiency VFD compatible motor (optional)
- Option of Flame proof motor



### BAC

Volume flow	upto 80 m <sup>3</sup> /hr
Delivery head	upto 25 m
Temperature	upto -15°C to 60°C

#### Features

- Reduced life-cycle costs through optimised efficiency levels
- Pump housing in plastic design
- Version with Victaulic or threaded connection



### IL

Volume flow	upto 900 m <sup>3</sup> /hr
Delivery head	upto 110 m
Temperature	upto 140°C

#### Features

- Closed coupled design, Vertical inline mounting
- Low pressure inline pumps
- Single stage
- Mechanical seal
- 3 Phase standard high efficient IEC IP 55 motors



### MHI /MHIL

Volume flow	upto 25 m <sup>3</sup> /hr
Delivery head	upto 70 m
Temperature	upto 110°C

#### Features

- Stages-2 to 7
- Mechanical seal with EPDM/Viton elastomers



## Water Utility

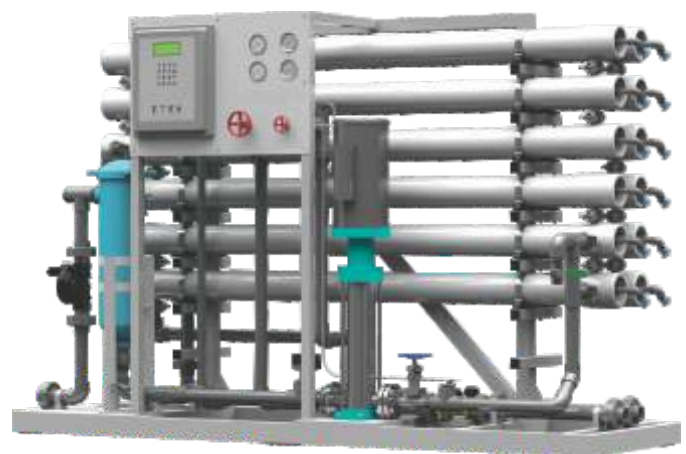
Wilo Expertise in Vast Application of Water Utility provides unmatched solutions with our extended product range. High Efficient Pumps delivers low maintenance continues operation.

### Applications

- Reverse Osmosis
- Water Kiosk
- Dust Suppression
- WTP
- Turbine Cooling
- Cooling Towers
- Mist Cooling
- Chillers

### Benefits:

- Low Energy life cycle cost
- Low maintenance
- Multi operational Models
- Precised controlling.



### Features

- High surface finishing of the hydraulics.
- High Efficient Hydraulics.
- Adapted motor, mech. Seal & Cartridge for low temperature running.
- Optimized size for space adaptability.
- High Efficient Motors

### Application Matrix

Reverse osmosis	Water Kiosk	Dust Suppression	WTP	Air To water Generator	Industrial Washing Machine	Cleaning System	Irrigation
MHIL	MHIL	MVI	MISO/PISO	STAR	MVI	MVI	MVI
MVI	MVI	MHIL	MVI	TOP S	MHIL	MHIL	MHIL
WJ	WJ	Helix	MHIL	HMHIL	MHI	MHI	MHI
Helix	Helix				Helix	Helix	Helix

## Pump Range:



### Stratos /TOP S /Star

Volume flow	upto 100 m <sup>3</sup> /hr
Delivery head	upto 18 m
Temperature	upto 110°C

#### Features

- Threaded or flange connection, EC motor and automatic power adjustment.
- Available in single/three phase.
- Combination flanges PN6/PN10 thermal insulation shells as standard for heating applications.
- Red-button technology for easy operation.



### MVI /Helix

Volume flow	upto 155 m <sup>3</sup> /hr
Delivery head	upto 235 m
Temperature	upto 100°C

#### Features

- Vertical inline mounting, available in 2 to 24 stages
- Antifriction bearing, mechanical seal with EPDM/Viton elastomers
- Supplied with high efficiency VFD compatible motor (optional)
- Option of Flame proof motor



### MISO /PISO /NL

Volume flow	upto 750 m <sup>3</sup> /hr
Delivery head	upto 170 m
Temperature	upto 120°C

#### Features

- End Suction top discharge, back pullout design
- Confirms to ISO 2858 /EN 733
- Mechanical seal/gland packing and grease/oil lubricated bearing
- Prime Mover- Motor/Engine



### WJ

Volume flow	upto 5 m <sup>3</sup> /hr
Delivery head	upto 45 m
Temperature	upto 35°C

#### Features

- Mobile self-priming, single-stage horizontal jet pump
- Mechanical seal
- 1/3 Phase standard IEC IIP 55 motors.
- Robust SS construction for durable operation, impeller, shaft and housing made of AISI 304



### MHI /MHIL /HMHIL

Volume flow	upto 25 m <sup>3</sup> /hr
Delivery head	upto 70 m
Temperature	upto 110°C

#### Features

- Stages-2 to 7
- Mechanical seal with EPDM/Viton elastomers





# Cooling

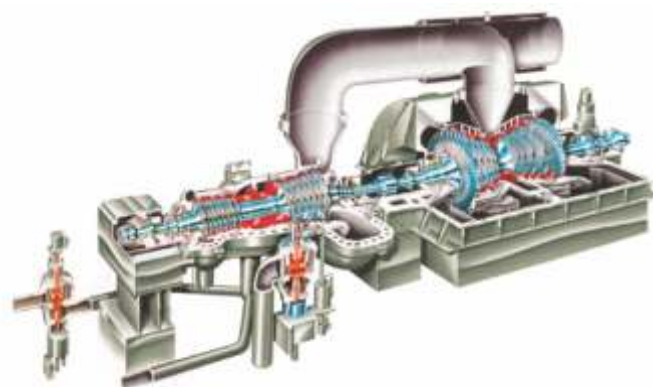
Wilo Provides the most High Efficient Solution for Cooling Application. Our expertise and Global presence in the Respective application gives us an opportunity to serve our clients as a solution provider

### Applications

- Machine Cooling
- Solar System Cooling
- Heat Exchanger
- Engine Cooling
- Air To Water Generators
- Industrial Washing Machine
- Cleaning System
- Irrigation

### Benefits:

- Low Energy life cycle cost
- Low maintenance
- Multi operational Models
- Precised controlling.



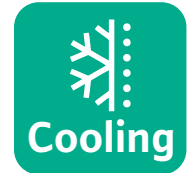
### Features

- High surface finishing of the hydraulics.
- High Efficient Hydraulics.
- Adapted motor, mech. Seal & Cartridge for low temperature running.
- Optimized size for space adaptability.
- High Efficient Motors

### Application Matrix

Machine Cooling	Solar System Cooling	Heat Exchanger	Engine Cooling	Turbine Cooling	Cooling Towers	Mist Cooling	Chillers
MHIL	STAR	MVI	IL	KL	MVI	MVI	MVI
MVI	TOP S	MHIL	MVI	MVI	MHIL	MHIL	MHIL
WJ	WJ	MHI	MHIL	Helix	MHI	MHI	MHI
Helix	MHI	WJ	WJ		MISO/PISO/NL	Helix	BAC
	MHIL	Helix	Helix		Helix		Helix

## Pump Range:



### Stratos / TOP S / Star

Volume flow	upto 100 m <sup>3</sup> /hr
Delivery head	upto 18 m
Temperature	upto 110°C

#### Features

- Threaded or flange connection, EC motor and automatic power adjustment.
- Available in single/three phase.
- Combination flanges PN6/PN10 thermal insulation shells as standard for heating applications.
- Red-button technology for easy operation.



### MVI / Helix

Volume flow	upto 155 m <sup>3</sup> /hr
Delivery head	upto 235 m
Temperature	upto 100°C

#### Features

- Vertical inline mounting, available in 2 to 24 stages
- Antifriction bearing, mechanical seal with EPDM/Viton elastomers
- Supplied with high efficiency VFD compatible motor (optional)
- Option of Flame proof motor



### MISO / PISO / KL / PNV

Volume flow	upto 750 m <sup>3</sup> /hr
Delivery head	upto 170 m
Temperature	upto 120°C

#### Features

- End Suction top discharge, back pullout design
- Conforms to ISO 2858
- Mechanical seal/gland packing and grease/oil lubricated bearing
- Prime Mover- Motor/Engine



### WJ

Volume flow	upto 5 m <sup>3</sup> /hr
Delivery head	upto 45 m
Temperature	upto 35°C

#### Features

- Mobile self-priming, single-stage horizontal jet pump
- Mechanical seal
- 1/3 Phase standard IEC IIP 55 motors.
- Robust SS construction for durable operation, impeller, shaft and housing made of AISI 304

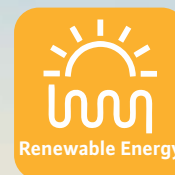


### MHI / MHIL

Volume flow	upto 25 m <sup>3</sup> /hr
Delivery head	upto 70 m
Temperature	upto 110°C

#### Features

- Stages-2 to 7
- Mechanical seal with EPDM/Viton elastomers



# Renewable Energy

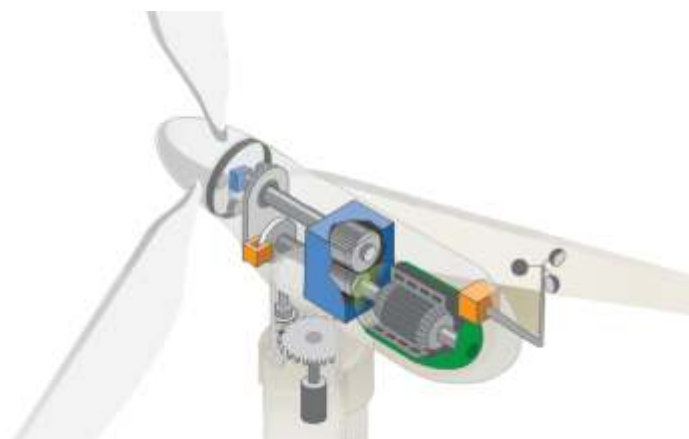
WILO range of high reliability and efficiency Pumps & Pumping Systems are the perfect match for a pumping solution for Renewable Energy .  
WILO has Vast experience with clean energy pumping

### Applications

- Wind Power
- Solar System Cooling
- Solar Water Heater
- Biomass Energy
- Air To Water Generators
- Geothermal Energy
- Hydrogen Fuel Cell
- Rain Water Harvesting

### Benefits:

- Low Energy life cycle cost
- Low maintenance
- Multi operational Models
- Precised controlling.



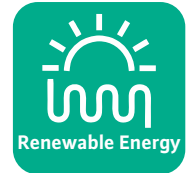
### Features

- High surface finishing of the hydraulics
- High Efficient Hydraulics.
- Adapted motor, mech. Seal & Cartridge for low temperature running.
- Optimized size for space adaptability.
- High Efficient Motors

### Application Matrix

Wind Power	Solar System Cooling	Solar water Heater	Biomass Energy	Air to Water Generator	Geothrmal Energy	Hydrogen Fuel Cell	Rain Water Harvesting
MHIL	STAR	STAR	STAR	STAR	STAR	STAR	MVI
MVI	TOP S	TOP S	TOP S	TOP S	TOP S	TOP S	MHIL
IL			WJ	WJ	WJ	WJ	MHI
Helix				HMHIL			WJ
							Helix

## Pump Range:



### Stratos / TOP S / Star

Volume flow	upto 100 m <sup>3</sup> /hr
Delivery head	upto 18 m
Temperature	upto 110°C

#### Features

- Threaded or flange connection, EC motor and automatic power adjustment.
- Available in single/three phase.
- Combination flanges PN6/PN10 thermal insulation shells as standard for heating applications.
- Red-button technology for easy operation.



### MVI / Helix

Volume flow	upto 155 m <sup>3</sup> /hr
Delivery head	upto 235 m
Temperature	upto 100°C

#### Features

- Vertical inline mounting, available in 2 to 24 stages
- Antifriction bearing, mechanical seal with EPDM/Viton elastomers
- Supplied with high efficiency VFD compatible motor (optional)
- Option of Flame proof motor



### BAC

Volume flow	upto 80 m <sup>3</sup> /hr
Delivery head	upto 25 m
Temperature	upto -15°C to 60°C

#### Features

- Reduced life-cycle costs through optimised efficiency levels
- Pump housing in plastic design
- Version with Victaulic or threaded connection



### WJ

Volume flow	upto 5 m <sup>3</sup> /hr
Delivery head	upto 45 m
Temperature	upto 35°C

#### Features

- Mobile self-priming, single-stage horizontal jet pump
- Mechanical seal
- 1/3 Phase standard IEC IIP 55 motors.
- Robust SS construction for durable operation, impeller, shaft and housing made of AISI 304



### MHI / MHIL

Volume flow	upto 25 m <sup>3</sup> /hr
Delivery head	upto 70 m
Temperature	upto 110°C

#### Features

- Stages-2 to 7
- Mechanical seal with EPDM/Viton elastomers



# Special Application

WILO with its high efficient range delivers high reliability low life cycle cost for Pumps & Pumping Systems. WILO with its Vast product range also can customize the product as per your requirement.

**Applications**

- Zero Electricity Chillers
- Pharma Equipment
- Food & Beverages
- Farm Automation
- Water Treatment
- Clean Water Supply
- District Heating
- Automobile

**Benefits:**

- Low Energy life cycle cost
- Low maintenance
- Multi operational Models
- Precised controlling



**Features**

- High surface finishing of the hydraulics.
- High Efficient Hydraulics.
- Adapted motor, mech. Seal & Cartridge for low temperature running.
- Optimized size for space adaptability.
- High Efficient Motors

**Application Matrix**

Zero Electricity Chillers	Pharma Equipment	Food & Beverages	Farm Automation	Water Treatment	Clean Water Supply	Districy Heating	Automobile
STAR	STAR	STAR	STAR	MVI	STAR	STAR	STAR
TOP S	TOP S	TOP S	TOP S	MHI	TOP S	TOP S	TOP S
Stratos	Stratos	Stratos	MHIL	MHIL	MHIL	WJ	Stratos
BAC		IL	WJ	IL	IL	IL	
				Helix			

## Pump Range:



### Stratos / TOP S / Star

Volume flow	upto 100 m <sup>3</sup> /hr
Delivery head	upto 18 m
Temperature	upto 110°C

#### Features

- Threaded or flange connection, EC motor and automatic power adjustment.
- Available in single/three phase.
- Combination flanges PN6/PN10 thermal insulation shells as standard for heating applications.
- Red-button technology for easy operation.



### MVI / Helix

Volume flow	upto 155 m <sup>3</sup> /hr
Delivery head	upto 235 m
Temperature	upto 100°C

#### Features

- Vertical inline mounting, available in 2 to 24 stages
- Antifriction bearing, mechanical seal with EPDM/Viton elastomers
- Supplied with high efficiency VFD compatible motor (optional)
- Option of Flame proof motor



### BAC

Volume flow	upto 80 m <sup>3</sup> /hr
Delivery head	upto 25 m
Temperature	upto -15°C to 60°C

#### Features

- Reduced life-cycle costs through optimised efficiency levels
- Pump housing in plastic design
- Version with Victaulic or threaded connection



### WJ

Volume flow	upto 5 m <sup>3</sup> /hr
Delivery head	upto 45 m
Temperature	upto 35°C

#### Features

- Mobile self-priming, single-stage horizontal jet pump
- Mechanical seal
- 1/3 Phase standard IEC IIP 55 motors.
- Robust SS construction for durable operation, impeller, shaft and housing made of AISI 304



### MHI / MHIL

Volume flow	upto 25 m <sup>3</sup> /hr
Delivery head	upto 70 m
Temperature	upto 110°C

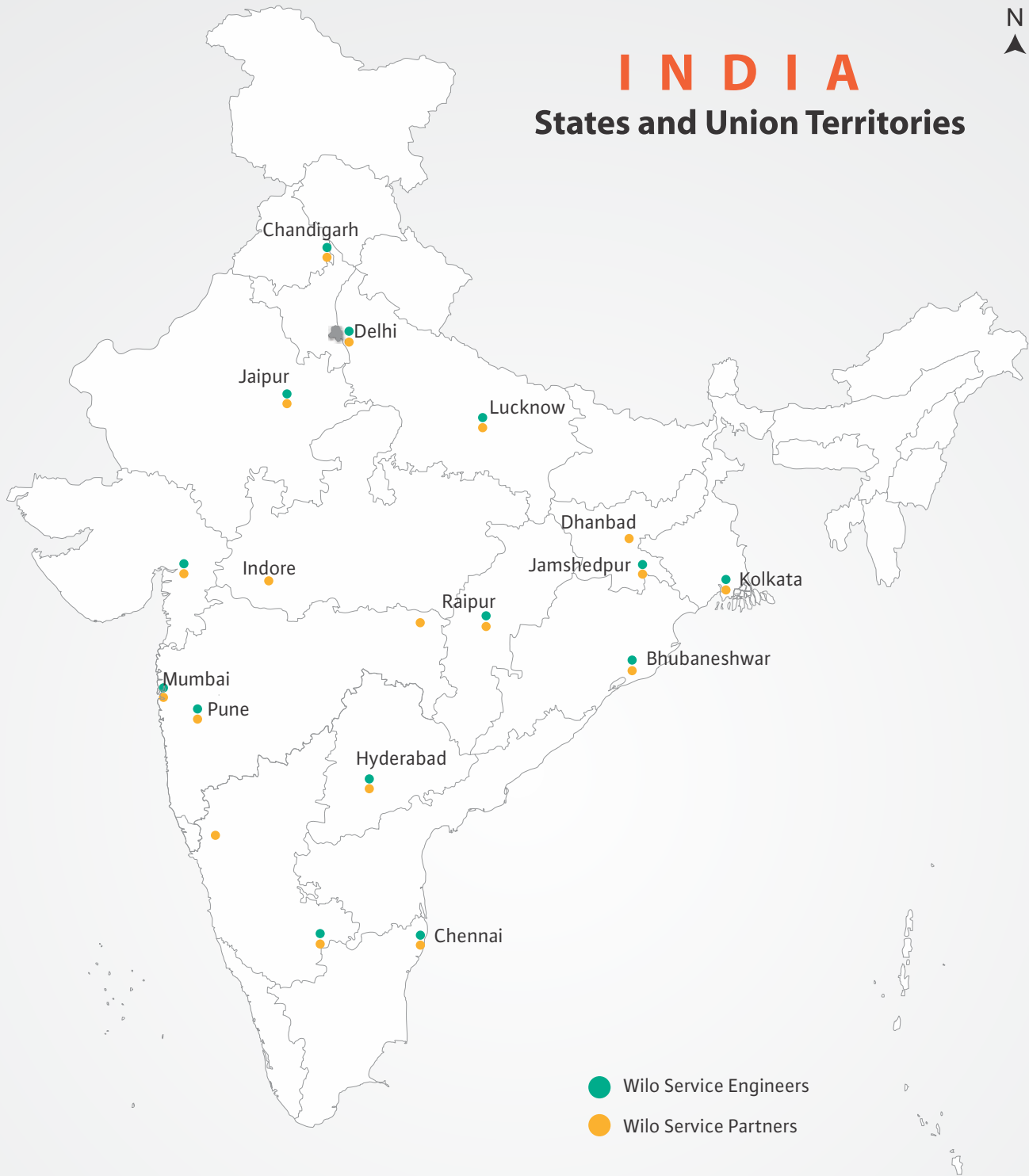
#### Features

- Stages-2 to 7
- Mechanical seal with EPDM/Viton elastomers



# INDIA

## States and Union Territories



# WILO BRINGS THE FUTURE.



Service Toll Free: 1800 266 8866  
[customercare@matherplatt.com](mailto:customercare@matherplatt.com)



SB\_IEM\_APP\_02\_A4\_210717\_E

**WILO Mather and Platt Pumps Pvt. Ltd.**

Mumbai Pune Road,  
Chinchwad, Pune – 411 019.  
Maharashtra (India)

T +91 20 6734 7100 / 200  
Service Toll Free: 1800 266 8866  
[www.wilo.in](http://www.wilo.in)  
[sales.in@wilo.com](mailto:sales.in@wilo.com)

[www.facebook.com/WiloIndia](https://www.facebook.com/WiloIndia)

Pioneering for You

Tech. matter subject to change without prior notice