

Reference Collection 2020

Overview Global References

Pia Scherbach | Public Relations

HIGHLIGHTS



LAKHTA CENTRE



FACTS

Country: Russia

City: St. Petersburg

Segment: Building Services

Applications: HVAC, Water supply

Products: Wilo-CronoLine-IL-E, Wilo-Helix VE, Wilo-Stratos-D

UP-HIGH - GREEN PUMPS IN EUROPE'S TALLEST BUILDING

With a height of 462 metres, the Lakhta Centre is the tallest building in Europe and the 13th tallest building in the world. It broke ground in 2012, the exterior was completed six years later. The “northernmost skyscraper in the world” will also serve as the headquarters of Russian gas giant Gazprom, which carried out the construction. Capturing the changes in daylight, the main tower’s unique silhouette symbolizes a flame, a distinctive feature of Gazprom’s logo. With a total floor area of over 400,000 m², Lakhta Centre comprises four different facilities.



FEDERATION TOWER



HIGH-EFFICIENCY FOR THE HEART OF MOSCOW'S BUSINESS CENTRE

The monumental complex consists of two towers with different sizes: the more than 370-meter tower with almost 100 floors is called "Vostok" (East-Tower), Orient, whereas the smaller one with over 60 floors and a height of 243 meters is called "Zapad" (West-Tower), Occident. Beneath the surface, the glass giants share a ten-story foundation. Products and solutions provided by Wilo Russia, ensure efficient and reliable heating, air conditioning and cooling at the same time.

FACTS

Country: Russia

City: Moscow

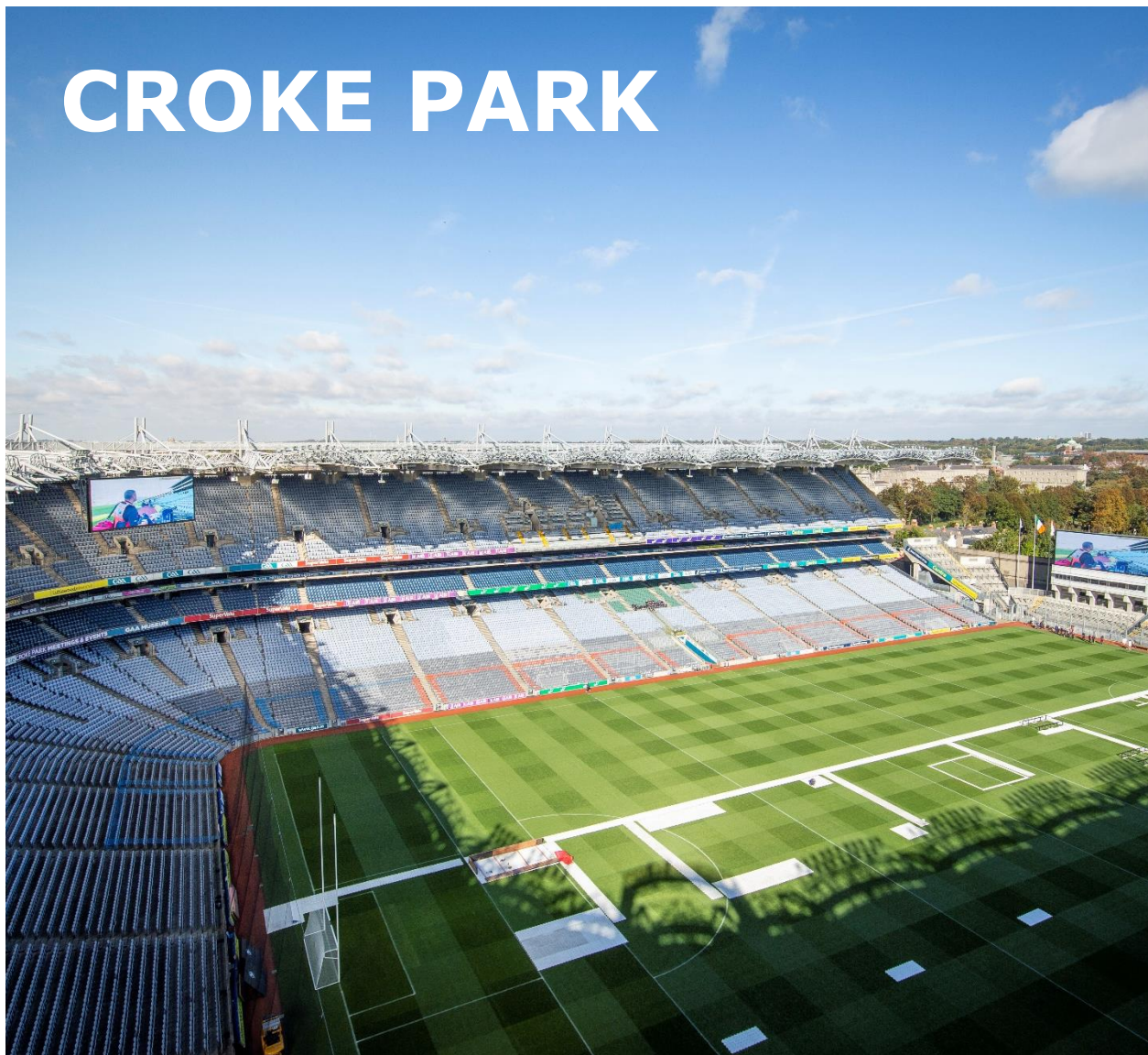
Segment: Building Services

Applications: HVAC

Products: Wilo-Stratos, Wilo-CronoLine-IL, Wilo-VeroLine-IP-E, Wilo-CronoLine-IL-E, Wilo-TOP-S, Wilo-VeroNorm NPG, Wilo-EMU FA, Wilo-EMU KS, Wilo-TOP-Z, Wilo-Multivert MVI, Wilo-CronoNorm-NL, Wilo-Star-RS



CROKE PARK



FACTS

Country: Ireland

City: Dublin

Segment: Building Services

Applications: Water supply, Drainage and sewage

Products: Wilo-Comfort COR, Wilo-Comfort COR Helix VE, Wilo-CronoLine-IL, Wilo-CronoLine-DL, Wilo-Stratos-Z

SERVICE SOLUTION PROVIDER

Croke Park is a major Gaelic Athletic Association (GAA) sports venue located in Dublin that hosts events for a number of sports. Since 1884 the site has been used primarily by the GAA to host Gaelic games, most notably the annual All-Ireland finals in Gaelic Football and Hurling. Wilo Ireland Service Department carries out the maintenance to the various booster sets, pressurisation units and circulating pumps on site. They are the preferred pump supplier and pump maintenance provider due to the high quality, high efficiency, green product focus and the high level of service back up provided by Wilo Ireland as required by the client.



CENTRAL BANK



FACTS

Country: Ireland

City: Dublin

Segment: Building Services
Commercial

Applications: HVAC

Products: Wilo-Stratos
GIGA, Wilo-SiBoost Smart
Helix VE, Wilo-Drain TP65

GREEN BUILDING APPROACH

Green Wilo pumps contribute to the overall efficiency of the new headquarters - from heating and cooling to cold water supply and products for rainwater harvesting. Central Bank campus is a green building, certified by BREEAM, the world's leading sustainability assessment method. The bank itself had set a number of objectives when it came to the sustainability of the building – one of our main requirements was to only provide high-efficient pumps with efficiency class IE4 to ensure compliance with BREEAM criteria. Central Bank set a number of objectives for the design of the building: e.g. to ensure the environmental sustainability.



UNITE STUDENTS



GREEN EFFICIENCY IN BETHNAL GREEN

Founded in 1992, Unite Students (uS) was the first private provider of purpose-built student accommodation in the UK. Today they have circa 130 properties across the country and provide a home for 50,000 students per year. Wilo products are in operation in several uS facilities, one of them being Blithehale Court in London – with energy efficient solutions and an extensive service offer, the pump manufacturer ensures a reliable operation within the building. In total, Wilo UK has provided new boosters for 11 different sites in 2018 – another 12 sites are in the making for 2019 and ongoing.

FACTS

Country: England

City: London

Segment: Building Services
Commercial

Applications: Water supply

Products: Wilo-SiBoost
Smart HELIX VE



FACTS

Country: China

City: Shanghai

Segment: Building Services
Commercial

Applications: HVAC

Products: Wilo-CronoNorm-NL, Wilo-Comfort COR-Helix VE, Wilo-SCP, Wilo-Multivert MVI, Wilo-NLB

HONGQIAO AIRPORT



WORLD-CLASS TRANSPORT HUB

Hongqiao Airport, the 4th busiest airport in China, is located in the west of Shanghai. With its 15 waiting halls, 18 VIP waiting halls and 15 luggage transmission systems, the main hub for domestic activity treats more than 8 million passengers every year. In Terminal T1, Wilo takes care of professional maintenance and energy saving solutions as full package for the reliable operation. This is the first collaboration with Wilo – undergoing the renovation of the air conditioning system, water supply system and fire fighting system of the whole Terminal 1. It's also the pilot project of WiloCare.



BAOBAB FOUNDATION



FACTS

Country: Ghana

City: Kissi

Segment: Water Management

Applications: Water supply

Products: Wilo-Actun OPTI

USING SOLAR POWER TO PROVIDE RUNNING WATER

Ground water is an important source for water supplies. This water can be extracted from wells and shafts using submersible pumps. In remote areas, however, securing a stable supply of energy can often be problematic, as the power grid is usually unstable. Wilo has adapted an alternative method which can be used at precisely these locations to obtain energy and provide a water supply. The solution is a pump supplied with electricity generated from solar power. Solar power is a free resource that does not need extensive infrastructure.



SEWA PUMPING STATION



IMPROVING SUSTAINABILITY

The Sharjah Electricity & Water Authority (SEWA) distributes and generates electricity, water and (piped natural) gas to the nationals and residents of the Sharjah Emirate. The Al Falaj pumping station represents one of many energy efficiency improvement projects. As complete solution provider, Wilo makes sure to satisfy the customers needs on all levels. The client's objectives towards Wilo were energy efficiency, reduction in maintenance and noise as well as potential energy saving. The Wilo ME Service team worked in close cooperation with the partners – including a WES & Retrofit Scope.

FACTS

Country: United Arab Emirates

City: Sharjah

Segment: Water Management

Applications: Water supply

Products: Wilo-SCP



ENSCO JACK UP RIG



TAKING CARE OF GIANTS

With a length of over 74 meters and a breadth of almost 63 meters, the self-elevating jack up rig is in operation for offshore exploration and development purposes. Designed for enabling the oil rig base to get hoisted up or stay afloat in the water, the rigs can be adjusted to the changing wind and water conditions. To guarantee a safe operation on the Offshore giants, Wilo-Service provides onshore care of constant quality inspections and overhauling.

FACTS

Country: United Arab Emirates

City: Arabian Gulf

Segment: Industry

Applications: Water supply

Products: Submersible pump-model K146+NU911T-2/60



FACTS

Country: United Arab Emirates

City: Dubai

Segment: Building Services Commercial

Applications: HVAC

Products: Wilo-Helix V, Wilo-Multivert MVI

DUBAI OPERA



A LANDMARK PROJECT

The Dubai Opera on Sheikh Mohammed Bin Rashid Boulevard is unquestionably the cultural centre of Dubai. The concert hall can seat up to 2,000 people. The Dubai Opera is one of the cultural and architectural landmarks of Dubai, if not the entire Arabian Peninsula. The fact that Wilo was selected to be a part of this prestigious construction project is a particular success, and not only in terms of technology and business: As a supplier for the Dubai Opera, Wilo made extensive and close contacts that extend far beyond this project.



FACTS

Country: Egypt

City: Galala

Segment: Water Management

Applications: Water supply, irrigation

Products: Wilo-SCP, Wilo-EMU KS

OPERATING UNDER HIGHEST REQUIREMENTS

The new City of Galala is located on the highest mount plateau in the Red Sea area between Ain Sokhna and Zafarana. The plateau sits over 650 meters above sea level at its highest elevation. The city is one of the government's national efforts to develop the vast and empty eastern desert to solve Cairo's population congestion and create work and living opportunities for the youth in addition to generating investment opportunities. The new city centers on a balanced approach towards development and preservation of the surrounding pristine environment.



SMART PUMPS IN A FOOTBALL TEMPLE

The SIGNAL IDUNA PARK is a distinctive feature of Dortmund's skyline. With space for 81,365 fans, the stadium is the biggest in Germany - the legendary south stand is Europe's largest standing-only terrace. For many years the home of Borussia Dortmund has counted on the energy efficient, reliable and high-performance products of Wilo. From water supply for the VIP areas, to the changing room heating and the undersoil heating system: Wilo product solutions create a green environment. Since 2019, new Wilo-Stratos MAXO models have been providing the supply for the south stand.

FACTS

Country: Germany

City: Dortmund

Segment: Building Services
Commercial

Applications: Water supply,
HVAC

Products: Wilo-Stratos
MAXO, Wilo-Comfort COR
Helix VE, Wilo-Multivert MVI,
Wilo-VeroLine-IP-E



FACTS

Country: Germany

City: Frankfurt

Segment: Building Services
Commercial

Applications: Water supply,
HVAC

Products: Wilo-Stratos
GIGA, Wilo-RexaLift FIT L



ECO-FRIENDLY PUMPS HELP CREATE AN ARCHITECTURAL HIGHLIGHT

„Messe“ Frankfurt is using highly efficient Wilo products for modern heating, air-conditioning and cooling technology in hall 12. Over 70 Wilo pumps are in use on the Frankfurt trade fair site. The tried and tested Wilo-Stratos and Wilo-Stratos GIGA high-efficiency pumps ensure optimum heating. Submersible pumps and lifting units regulate sanitation in the hall. The Wilo-RexaLift FIT L sewage lifting unit is easy and flexible to install with a choice of inlets. It guarantees reliable operation thanks to trustworthy filling level monitoring and integrated thermal motor protection.



ALVEAR TOWER



235 METRES OF CONSTRUCTION EXCELLENCE

With 235 metres, Alvear Tower is the highest residential tower in Argentina and the most relevant development in the City of Buenos Aires. The mixed-use development complex contains several condominiums as well as a five-star hotel. One of the main challenges was, due to the height of the building, how the water would be pumped without recurring to really high pressure booster sets. It was solved by using intermediate brake tanks at different stages from where the boosters will be supplying to several floors. The water is lifted to those brake tanks through multistage vertical pumps.

FACTS

Country: Argentina

City: Buenos Aires

Segment: Building Services Commercial

Applications: All

Products: Wilo-Comfort COR Helix VE, Wilo-CronoNorm NL, Wilo-CronoTwin-DL-E, Wilo-VeroTwin-DP-E, Wilo-CronoLine-IL-E



FACTS

Country: Chile

City: Santiago de Chile

Segment: Building Services
Commercial

Applications: HVAC

Products: Wilo-CronoLine-IL

COSTANERA CENTRE



SOUTH AMERICA'S MEGA MALL

The Costanera Centre – also known as „Gran Torre Santiago“ - is a 64-story skyscraper in Santiago. The tower consists of nearly 700,000 m² of building space. The building, that looks as tall as the Andes, is part of the Costanera Centre complex, which includes a shopping mall, two hotels and additional office spaces. Over 130 Wilo pumps are used in the centre for efficient cooling and air-conditioning technology. For demanding conditions from - 2 °C in winter to a high of +35 °C in summer, Wilo's intelligent system solutions make for a reliably pleasant climate.

NEW

STORM WATER PUMPING STATION



FACTS

Country: India

City: Mumbai

Segment: Water Management

Applications: Drainage & Sewage

Products: Wilo-Axial Flow Submersible Pump

SAVIOR DURING A MONSOON

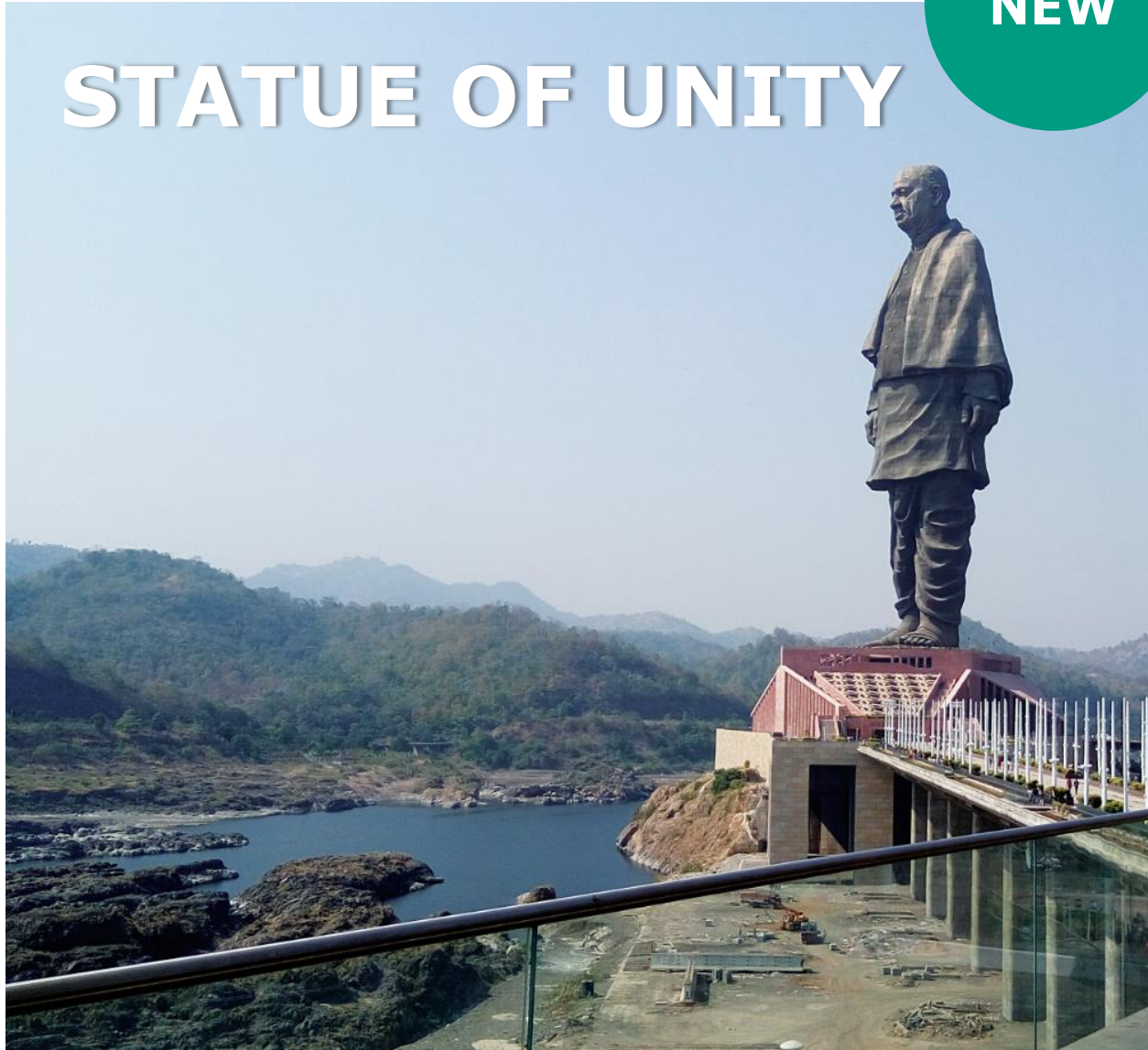
India's monsoon is both, a curse and a blessing. While the agriculture depends on the natural water supply, Mumbai's inhabitants and infrastructure suffer from the enormous deluge of water. Nearly thirty Wilo vertical turbine pumps operate in four different water-pumping stations, facing the challenge during rainfall season. Wherever the land level is lower than the sea level, water logging is bound to happen. Pumping stations are responsible for two main things: they pump out rainwater and prevent high tides from seeping into the city. Each pump can push out 6,000 litres of water per second.

NEW

STATUE OF UNITY

EFFICIENT SYSTEMS FOR WATER SUPPLY

The Statue of Unity represents a portrayal of the Indian statesman and independence activist Sardar Vallabhbhai Patel. He was the first Deputy Prime and Home Minister of independent India and the chief adherent of Mahatma Gandhi during the non-violent independence movement. The total height of the structure is 240m with a base of 58m and the statue of 182m. The height was specifically chosen to match the number of seats in the Gujarat Legislative Assembly. Five Hydro Pneumatic Systems from Wilo are used for supplying water to all zones.



FACTS

Country: India

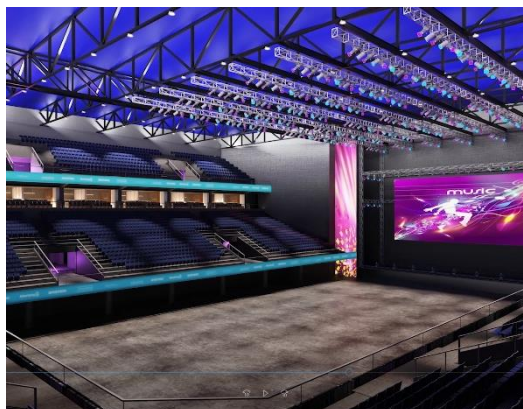
City: Narmada

Segment: Water Management

Applications: Drainage & Sewage

Products: Wilo-Economy CO, Wilo-Booster

BUILDING SERVICES



BUENOS AIRES ARENA



FACTS

Country: Argentina

City: Buenos Aires

Segment: Building Services
Commercial

Applications: HVAC

Products: Wilo-Comfort
COR Helix VE

SIGNATURE VENUE

Located in the heart of Buenos Aires, the new arena is set to become Argentina's signature sports and entertainment venue. The complex, that can hold up to 15,000 visitors, will host entertainment events, family shows, festivals, sports and music events. The stadium, eight stories high and 50,736 m² in area, has a capacity ranging from 4,000 to 11,500 seated spectators, with the possibility of expanding to 15,000 with an audience standing on the pitch. It is located at 450 Humboldt Street, a few blocks away from Corrientes and Juan B. Justo Avenues.



UNIVERSITY OF BRITISH COLUMBIA



TAILORED SOLUTIONS FIT ALL REQUIREMENTS

Until 2025 the Okanagan campus of the UBCO will undergo various expansions. The challenge was and is that Wilo IL-E and Stratos GIGA pumps cannot be used in Canada, due to voltage and certification requirements. Therefore, Wilo Canada equipped and programmed IL pumps with Danfoss frequency converters – in order to be able to compete with Grundfos (who competed in this project). The benefits for the customer certainly are: short communication channels, very good spare parts supply as well as efficient support.

FACTS

Country: Canada

City: Okanagan

Segment: Building Services
Commercial

Applications: HVAC

Products: Wilo-CronoLine-IL, Wilo-Stratos, Wilo-Star-Z NOVA



UNICOM DATA CENTRE



THE LARGEST DATA WAREHOUSE IN THE WORLD

Guizhou, one of the fastest-growing provinces in Southwest China in terms of GDP growth, is aiming to become a big data hub. China Unicom, one of the leading provincial operations, has established the new data centre in the new district. To provide high quality communication to the Guizhou province. In 2017, it won the 4A global certification of data center green rating. Wilo China has provided green energy saving solutions, excellent and reliable products, efficient and rapid cooperation that can immediately meet the customers' requirements.

FACTS

Country: China

City: Guizhou

Segment: Building Services
Commercial

Applications: HVAC

Products: Wilo-CronoNorm-NL, Wilo-SCP, Wilo-Comfort COR Helix VE



GUANGZHOU BAIYUN INTERNATIONAL AIRPORT



FACTS

Country: China
City: Guangzhou
Segment: Building Services Commercial
Applications: HVAC
Products: Wilo-SCP, Wilo-CronoNorm-NL

EXPANDING EFFICIENCY

The expansion project of Terminal 2 of Guangzhou Baiyun International Airport started in February 2013 and was officially put into use in April 2018. After completion, it will meet the annual demand for 80 million passengers, 2.5 million tons of cargo and mail throughput, and 620,000 aircraft movements. A total of 80 WILO SCP horizontal double suction pumps and 19 WILO NL horizontal end suction pumps have been installed in the T2 terminal of Guangzhou Baiyun Airport. The maximum power is up to 160KW and 37KW respectively. The refrigeration system provides a strong guarantee to the 880,700 m² of terminal building.



FACTS

Country: China

City: Beijing

Segment: Building Services
Commercial

Applications: HVAC

Products: Wilo-CronoLine-IL, Wilo-Multivert MVI, Wilo-SCP, Wilo-CronoNorm-NL

OLYMPIC STADIUM CENTRE



HIGH-EFFICIENT TRAINING BASE

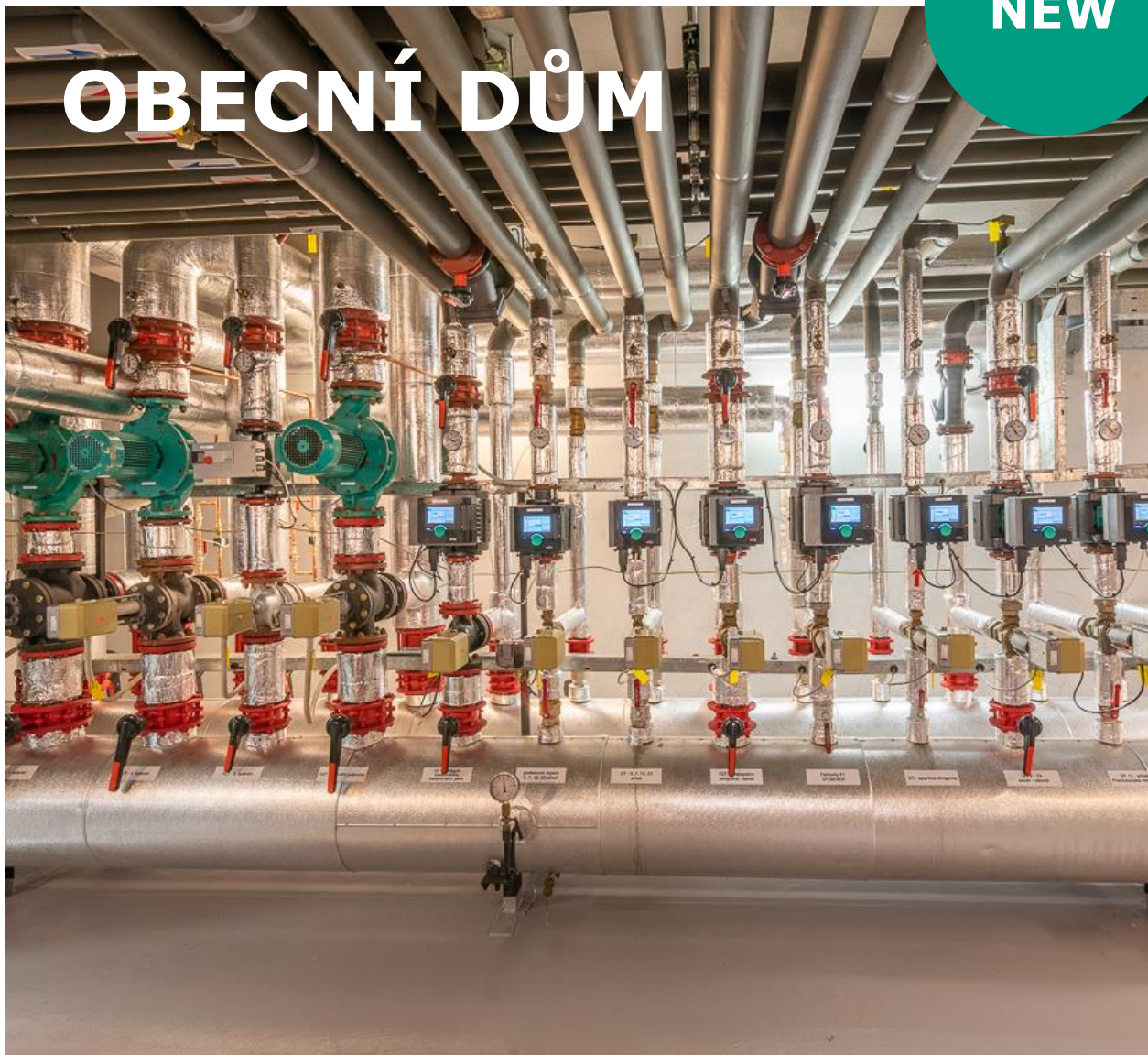
The national Olympic sports center, located on the north fourth ring road of Beijing, was established in 1986 for the 1990 Asian Games. It is not only a training base for national sports athletes, but also an important place for holding large-scale sports events, as well as for entertainment. The whole complex contains an indoor arena, the main stadium, a hockey field as well as a natatorium. The stadium has a floor space of 34,975 m². For the 2008 Summer Olympics, it had undergone a major renovation. Over the years, efficiency has also been improved within the building.

NEW

OBEČNÍ DŮM

EFFICIENCY FOR HISTORICAL BUILDINGS

The city of Prague has the goal to reduce energy consumption of some buildings by at least 12% per year – at the same time the city will also save 37,615 tonnes of CO₂ by increasing energy efficiency. In order to significantly reduce the costs of heating and hot water supply at the Municipal House in Prague, 22 pumps have been replaced with high-efficient Wilo products. They have been chosen due to their innovative Dynamic Adapt Plus function, which allows additional savings compared to other modern pumps.



FACTS

Country: Czech Republic
City: Prague
Segment: Building Services
 Commercial
Applications: HVAC
Products: Wilo-Stratos
 MAXO, Wilo-Stratos MAXO-Z
 and Wilo-Stratos GIGA-D

NEW

WATER HYGIENE

BLACK LION HOSPITAL



FACTS

Country: Ethiopia

City: Addis Ababa

Segment: Building Services
Commercial

Applications: Water Supply

Products: Wilo-SiBoost
Smart Helix VE

The Black Lion Hospital in Ethiopia is one of the largest public referrals hospital in the country, having approximately 370,000-400,000 patients a year. For the past 8 years it has faced challenges with boosting water to the top floor of the building. Staff had to carry water in buckets to serve all floors at the top, as the taps had run dry. With the installation of the Wilo-SiBoost Smart Helix VE, water can now be conveniently provided to the entire building. Since the installation, the hospital enjoys an odor free, hygienic environment and it has greatly reduced the time previously wasted fetching water and increased the time available to serve patients.



CHALET DES NEIGES



FACTS

Country: France

City: Tours en Savoie

Segment: Building Services
Commercial

Applications: HVAC

Products: Wilo-Stratos,
Wilo-Stratos-D,
Wilo-VeroLine-IP-E,
Wilo-VeroTwin-DP-E,
Wilo-Stratos-Z

5 STARS AT THE FOOT OF THE SLOPES

Arc 2000 is one of the four sites of the ski resort of Les Arcs and more broadly of the ski area of Paradiski. It's located on the northern slope of the Vanoise massif in Tarentaise in the east of the French department of Savoie, Chalet des Neiges are luxury apartment for rentals. These apartments have been equipped with Wilo-Stratos, Stratos D and Z for its range effect dedicated to heating and hot sanitary water applications. The Wilo solutions bring efficient and environment friendly technologies (ECM motor). The use of these pumps allows the operator to save energy and obtain low operating costs, thanks to their variable speed to meet the needs of the installations.



CRÉDIT AGRICOLE



FACTS

Country: France

City: Besancon

Segment: Building Services
Commercial

Applications: HVAC

Products: Wilo-Stratos
MAXO, Wilo-CronoLine-IL

SMART EFFICIENCY IN THE FINANCIAL SECTOR

Crédit Agricole Consumer Finance S.A. is the market leader for consumer loans in France and Europe. As a subsidiary of the French banking group Crédit Agricole, Crédit Agricole Consumer Finance S.A. is also one of the largest European banks and offers a wide range of financial products and services in 23 countries. Through the acquisition of Wilo-Stratos MAXO high-performance circulators, the Crédit Agricole Franche-Comté's head office has taken up the technical challenge of maximizing its electrical gains and improving the efficiency of energy flows and consumptions.



DATEV CAMPUS

FACTS

Country: Germany

City: Nuremberg

Segment: Building Services
Commercial

Applications: HVAC

Products: Wilo-Stratos,
Wilo-SiBoost Smart Helix VE,
Wilo-CronoLine IL-E



SUSTAINABLE PUMP TECHNOLOGY

The DATEV IT Campus 111 sets an example for modernity and sustainability. The rectangular, four-storey building complex with a gross floor area of over 56,000 m² offers 1,800 DATEV eG employees a futuristic, comfortable workplace. Around 90 Wilo pumps cover the areas of heating, air conditioning and refrigeration. The drinking water pressure booster Wilo-SiBoost Smart Helix VE is located in a separate cellar room and ensures a reliable water supply. With the Wilo-CronoLine IL 200, the largest installed Wilo pump is also used here. This ensures a pleasant climate in summer for the 1,800 DATEV employees.



GOLDBECK



SMART PUMP IN THE HEATING CELLAR OF THE FUTURE

What makes the construction company GOLDBECK special are not only the 47 locations in Germany and Europe. Or the approximately 90,000 tons of steel that the East Westphalians process every year. At GOLDBECK's headquarters in Bielefeld, a special feature is hidden. In the cellar of a new, futuristic extension building 13 Wilo pumps are in operation - including twelve brand new Wilo-Stratos MAXO pumps. Like a Wilo-Stratos GIGA, the twelve Smart pumps are used to heat and cool the office building.

FACTS

Country: Germany

City: Bielefeld

Segment: Building Services
Commercial

Applications: HVAC

Products: Wilo-Stratos
MAXO, Wilo-Stratos GIGA



EBZ BOCHUM



FOR MAXIMUM ENERGY EFFICIENCY

The "smart heating cellar" in the new building of the EBZ in Bochum will show how energy-efficient technology can become even more energy-efficient - thanks to intelligent networking. An important part of the pioneering research project: the Wilo-Stratos MAXO. Its "smart heating cellar" is used to research the efficient generation and distribution of heat and cold in buildings. The results should not only improve the indoor climate in new buildings, but also provide tangible research results on intelligent building management.

FACTS

Country: Germany

City: Bielefeld

Segment: Building Services
Commercial

Applications: HVAC

Products: Wilo-Stratos
MAXO, Wilo-Stratos GIGA

NEW

SMART CITY BAD HERSFELD

SMART CITY RELIES ON PUMP REPLACEMENT

On a grand scale, the city of Bad Hersfeld has exchanged old pumps in municipal buildings for highly efficient Wilo pumps and thus made use of the state pump subsidy. The result is impressive - for the town treasury and the environment. 60 new Wilo pumps in a total of 24 municipal buildings are now operating highly efficiently - from the municipal library, to the municipal kindergartens and the multi-purpose halls in Bad Hersfeld. And more are to follow. The municipality is currently saving 29,000 kilowatt hours of electricity and more than 17 tonnes of CO2 every year.



FACTS

Country: Germany

City: Bad Hersfeld

Segment: Building Services
Commercial

Applications: HVAC

Products: Wilo-Stratos
PICO, Wilo-Star-Z NOVA T



NEW

LVM-CHRYSTAL

BRILLIANT - EVEN IN THE PLANT ROOM

With the “crystal”, the LVM insurance company completed the building complex at its headquarters in Münster - setting new standards for sustainable construction and modern high-rise architecture. What fits in better than pump technology and service from Wilo? Every component of the building aims for maximum efficiency: starting with thermal insulation, through lighting control, to self-generated energy - thanks to the photovoltaic system and the biogas-powered block-type thermal power station. It is clear that such a building needs efficient and intelligent pump technology.



FACTS

Country: Germany

City: Münster

Segment: Building Services
Commercial

Applications: HVAC

Products: Wilo-EMUport
CORE, Wilo-Stratos MAXO



NORTHERN LIGHTS



PARTNERS FOR LIFE

The Northern Lights residential complex, a bold unique project embodied in the Hi-tech style, received an award from the International Association of Architects Union 2017. Three towers of an unusual shape on the 33rd, 37th and 42nd floors are similar to the glimpses of the northern lights embodied in reality and are one of the most beautiful projects of the capital of Kazakhstan. The residential complex was designed with the intention that its inhabitants would be warm and comfortable 24 hours a day during the harsh Astana winters.

FACTS

Country: Kazakhstan

City: Nur-Sultan

Segment: Building Services
Commercial

Applications: Water supply

Products: Wilo-CronoLine-IL, Wilo-CronoBloc BL, Wilo-CronoNorm-NL, Wilo-Helix VE

NEW

THE CITY OF GLASS

The multifunctional complex NURLY TAU is an architectural focus of the administrative centres of Almaty and is the one of the largest social centres in Kazakhstan. Its unique shape represents the Zaily Alatau Mountain. NURLY TAU stands for a “city inside a city” – each element within the complex was built for the comfort of the staff and residents of the building. Wilo solutions like the Wilo-CronoLine-IL and Wilo-SiFire reduce life cycle costs thanks to optimised efficiency and operate reliably in the application of e.g. firefighting.

NURLY-TAU BUSINESS CENTRE



FACTS

Country: Kazakhstan

City: Almaty

Segment: Building Services
Commercial

Applications: Water supply

Products: Wilo-CronoLine-IL, Wilo-CronoBloc BL, Wilo-CronoNorm-NL, Wilo-SiFire

NEW

ALMATYS CULTURAL HOTSPOT



PALACE OF THE REPUBLIC



The Palace of the Republic is located in the Almaty City Centre at the intersection of Dostyk and Abay Streets and is one of main and largest concert halls in not only Almaty but Kazakhstan, too. It was built in 1970 and was called "Palace Lenin" back then. The building was opened during the 100th birth anniversary celebration of Lenin and ever since has become the main tourist attraction of Almaty. The composition of the building includes the internal volumes which are under one roof of 10000 sq. meter. The roof rests on eight concrete walls and they do not reach the bottom of the roof and hence giving a virtual look.

FACTS

Country: Kazakhstan

City: Almaty

Segment: Building Services
Commercial

Applications: Water supply

Products: Wilo-CronoLine-IL, Wilo-CronoBloc BL, Wilo-CronoNorm-NL, Wilo-Helix VE

NEW

WILO-PUMPS FOR A NEW HOSPITAL

HOSPITAL NUR-SULTAN



FACTS

Country: Kazakhstan

City: Nur-Sultan

Segment: Building Services
Commercial

Applications: Water supply

Products: Wilo-Comfort
COR-3, Wilo-Helix

The government of Kazakhstan allocated around 12 million Euro for the construction of a modular infectious diseases hospital for patients with COVID-19 in the city of Nur-Sultan. The construction of the hospital was finished in 13 days, its total area comprises 7000 m². The hospital structure erected from modular blocks using the technologies of building prefabricated buildings and equipped with modern means of ensuring the safety of medical staff and patients. Moreover, most importantly, a medical gas system includes a cryogenic station, an oxygen station, and a compressed air station.



PANGYO ALPHADOM



CITY OF THE FUTURE

Pangyo Alphadom City is a future-oriented new town, which is located in Seongnam, satellite city of Seoul, capital of South Korea. It consists out of commercial buildings such as department stores & shopping streets, restaurants, offices, hotels and residential buildings. The project is - in size and value aspects - a mega real estate development project. Moreover, Pangyo Alphadom City consists of various types of buildings from a department store to offices. Expectation was that water consumption in various buildings would be reluctant. Wilo supplied 130 pumps in the application of water supply, HVAC, firefighting and drainage to meet this challenge.

FACTS

Country: Korea
City: Pangyo
Segment: Building Services
 Commercial
Applications: All
Products: PUZeN,
 Wilo-CronoLine-IL, PMT, PD



FACTS

Country: Korea

City: Busan

Segment: Building Services
Commercial

Applications: All

Products: PUZ, PMT,
Wilo-CronoLine-IL, PH, PSW



GREEN SOLUTIONS FOR A MODERN PLANT

Bosch Rexroth Korea factory is an outpost for the East Asian market, located in Busan. Facilities for production, logistic, and offices were built on over 17,000 m². Now the factory represents the Korean headquarters of Bosch Rexroth. It produces hydraulic power units and control blocks, so they can gain the upper hand in the various fields of business and Social Overhead Capital (SOC) market like water power plants. Wilo provided all kinds of pumps and system solutions for the building. From Water Supply, HVAC, Fire-fighting to Drainage as well as circulation pumps.



STARFIELD GOYANG



TAILOR-MADE SOLUTIONS

Starfield Goyang is a mega complex shopping theme park located in Goyang-si - near Seoul, capital of Korea. It is the nations largest shopping complex with various malls, restaurants, hypermarkets, sports and entertainment complexes. The building required tailor-made heating, ventilation and air-conditioning solutions as well as experts with deep insights into HVAC systems. Moreover, it demanded overall pumps and pump system solutions in various applications and uses for shopping malls as well as sports facilities including a swimming pool.

FACTS

Country: Korea

City: Goyang

Segment: Building Services
Commercial

Applications: Water supply,
Drainage & Sewage

Products: Wilo-CronoLine-IL, Wilo-Multivert MVI, Wilo-HiBoost, PMT, PD, PDV



ULAANBAATAR AIRPORT



MONGOLIA'S TRANSPORT HUB

The New Ulaanbaatar International Airport (NUBIA) is being constructed at Khushigt Valley in Tuv Province, around 50km south of Mongolia's capital city Ulaanbaatar. Also known as Khöshig Valley Airport, construction started in May 2013. It was scheduled for completion by the end of 2016, but delays have extended this to first half of 2020. The airport will be capable of handling approximately three million passengers a year. New infrastructure and reserved land will enable future expansions to serve an estimated 12 million passengers a year.

FACTS

Country: Mongolia

City: Ulaanbaatar

Segment: Building Services
Commercial

Applications: HVAC

Products: Wilo-CronoLine-IL
IL, Wilo-SiFire, Wilo-SiBoost
Smart Helix VE,
Wilo-VeroLine-IP-E, Sprinkler
KM, CC-HVAC



LIDL DISTRIBUTION CENTRE



FACTS

Country: Netherlands

City: Oosterhout

Segment: Building Services
Commercial

Applications: HVAC

Products: Wilo-Stratos,
Wilo-Stratos GIGA,
Wilo-CronoLine-IL-E,
Wilo-SiBoost Smart Helix VE

BREEAM STAR

The complex opened its doors in 2019. With 54,000 m², it's one of Europe's largest LIDL Distribution Centres and represents the new model for sustainability. The BREEAM classification "Outstanding" proves that. Wilo has delivered pumps for pressure boosting, heating, cooling and tap water. The construction time was only 1 year, so the builders needed reliable and high-performance partners, with high-quality energy efficient products combined with first-class service and advice. Wilo's advice was also welcome concerning the realization of the crate washing installation. To better match the water supply and water collection, Wilo advised and engineered a special break tank.

NEW



KORF VIS



FOR CHALLENGING REQUIREMENTS

In the Netherlands, fish is a very important export and consumer products. This year, the fish processing company Korf Vis moved into their newly renovated premises in Urk. The fish processing sector faces a relatively large number of special challenges. On the basis of the company's certifications, certain rules with regard to sustainability, hygiene and food safety must be followed. ToTec relies on Wilo's pump systems. Because of the several adjustment options on the pump itself, they are very suitable for monitoring the water and air quality in the building. The intelligent pumps are switched on when critical limit values are approaching and adjustments are required.

FACTS

Country: Netherlands

City: Urk

Segment: Building Services
Commercial

Applications: HVAC, Water supply

Products: Wilo-Stratos,
Wilo-SiBoost Smart 2 Helix



WARSAW SPIRE



ENERGY SAVING SOLUTION

Warsaw Spire is a complex of office buildings located in the district of Wola, Warsaw. One of the tallest office buildings in Poland and one of the tallest ones in Europe, it has been honoured with prestigious awards. The object is equipped with modern heating, ventilation and air-conditioning systems as well as sewage disposal and water supply systems. Due to the size and height of the building, it was necessary to meet the challenging requirements of high pressures and diversified flows. The solutions applied are unconventional and required in-depth engineering expertise, to also apply to the high safety criteria and strict energy consumption standards.

FACTS

Country: Poland

City: Warsaw

Segment: Building Services
Commercial

Applications: Water Supply

Products: Wilo-Comfort
COR Helix VE, Wilo-Stratos,
Wilo-EMU FA, Wilo-DrainLift,
Wilo-RainSystem AF 400



1UA BUILDING



FACTS

Country: Poland

City: Lublin

Segment: Building Services
Commercial

Applications: HVAC

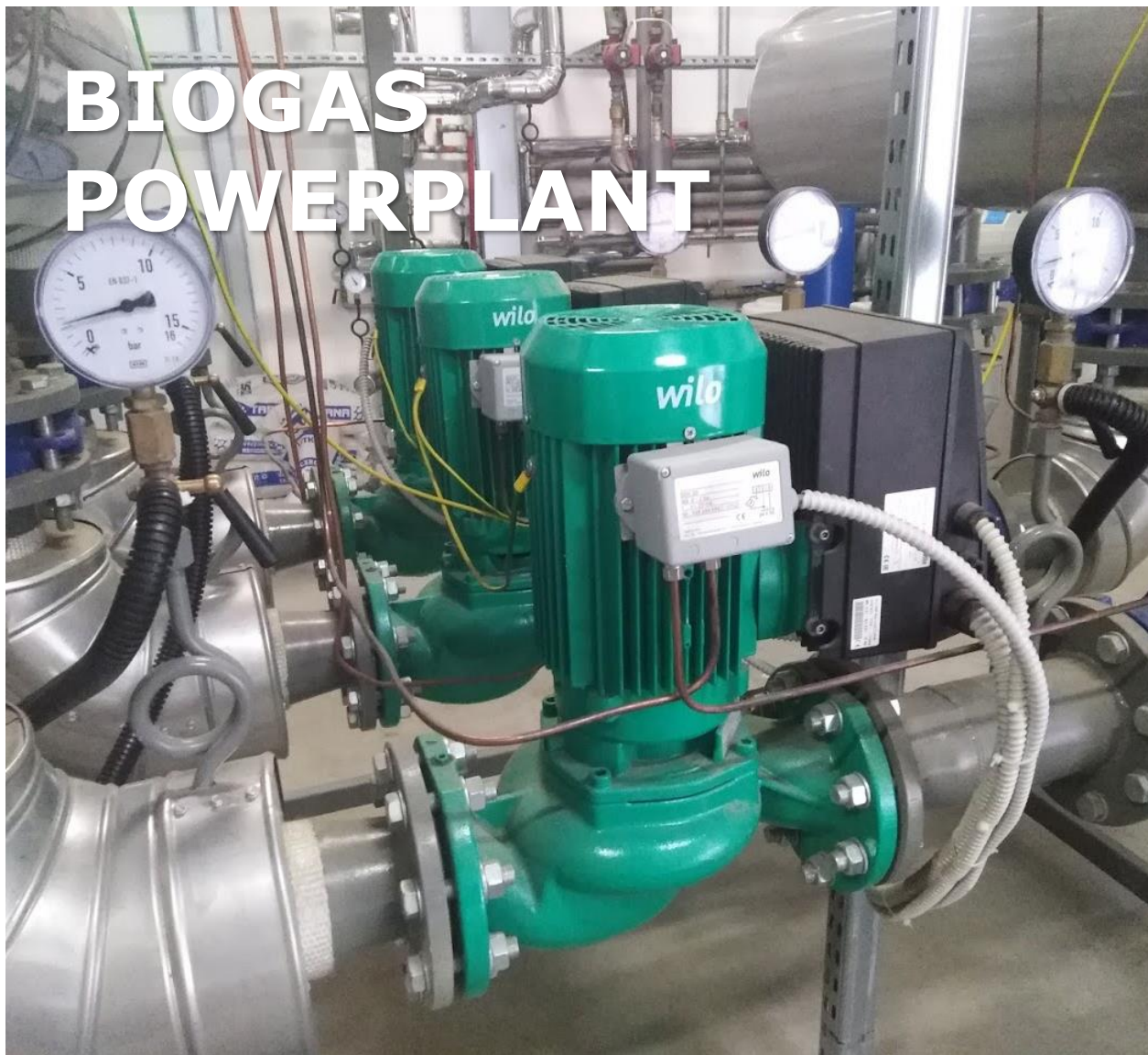
Products: Wilo-CronoBloc
BL, Wilo-CronoBloc BL-E,
Wilo-VeroLine-IP-Z,
Wilo-VeroLine IP-E,
Wilo-Yonos MAXO

COMPREHENSIVE PUMPING SOLUTIONS

A building constructed in the place of a previous bus depot made a remarkable change in the landscape of the area. From the design phase through the execution and service phases, the investment was being carried out under the supervision and with great support of Wilo. Installation and commissioning of the devices was conducted efficiently. The service department takes care of all the pumps and auxiliary equipment based on a maintenance contract, which gives the end-user peace of mind and ensures high operation standard of the devices.



BIOGAS POWERPLANT



FACTS

Country: Poland

City: Darzyn

Segment: Building Services
Commercial

Applications: HVAC

Products: Wilo-CronoLine-IL-E, Wilo-VeroLine-IP-E

REDUCTION OF ENVIRONMENTAL POLLUTION

The purpose of the investment was to build an ecological heating network in the municipality of Potęgowo. It also included modernization of the existing heating substations and planned construction of new substations to be installed in the existing facilities, where coal-fired boiler rooms were going to be closed down. Goal was reducing environmental pollution and increasing the use of renewable energy for heating purposes. The biogas plant produces electricity from organic matter, i.a. agri-food waste. A byproduct of this process is heat which the plant used for its own purposes.

NEW

ARCHE HOTEL



FACTS

Country: Poland

City: Lublin

Segment: Building Services
Commercial

Applications: Drainage &
Sewage

Products: Wilo-EMUport
CORE 20.2-14B

CLEAN AND SAFE SOLUTIONS FOR THE HOTEL BUSINESS

The "Arche" hotel is a newly-built hotel located in Lublin. Its total surface amounts to 5000 m². The investment comprises a hotel building with a conference room and a restaurant on the ground floor, as well as a car park in the underground part. At the planning stage, the design office signalled the need for a reliable solution for transporting sewage due to the character of the building. The solution was expected to be clean and safe in operation, including preventing staff from having contact with sewage and preventing gas emissions, particularly hydrogen sulphide.



GREEN WELLNESS OASIS

„Therme Bucuresti“ is located north of Bucharest, offering a wellness concept for a modern and balanced lifestyle. The thermal bath has an indoor temperature of 29-30 degrees Celsius and a water temperature of 33 degrees – during every single month of the year. Thermal water supplies 10 pools, 6 saunas, 4 wet saunas and 16 water slides. While various Wilo-products supply the 25,000 m² interiors of the modern oasis, the Service experts generate operational comfort for the customer, due to a high quality maintenance package.

FACTS

Country: Romania

City: Bucharest

Segment: Building Services
Commercial

Applications: Water supply,
Drainage & Sewage

Products: Wilo-Rexa FIT,
Wilo-DrainControl



MALL OF AFRICA



AFRICA'S SUPER MALL

The Mall of Africa HVAC was split into two sections: Eastern retail run by Total Air controls and Western retail run by Improvair (IES). The mall includes four plant rooms. DL Twin inline pumps ranging from 2.2 – 30KW are in operation for all major water applications including stores like Edgars, Game, YDE, Truworths, Checkers, Woolworths, Cinemas and restaurants. This design saved the contractors and quantity surveyors substantial amounts on pipework and valves as only one incoming and outgoing pipeline could be used for a duty/standby system.

FACTS

Country: South Africa

City: Midrand

Segment: Building Services
Commercial

Applications: HVAC

Products: Wilo-Cronotwin-DL, Wilo-CronoNorm-NL, Wilo-CronoNorm-NLG, Wilo-EMU KS, Wilo-EMU FA



FACTS

Country: Turkey

City: Antalya

Segment: Building Services
Commercial

Applications: All

Products: Wilo-Yonos MAXO, Wilo-Stratos, Wilo-VeroLine-IPL, Wilo-Stratos GIGA, Wilo-Yonos PICO, Wilo-Helix V, Wilo-Multivert MVI, Wilo-Rexa PRO, Wilo-RexaLift FIT L, Wilo-EMU FA



1000 PUMPS FOR HIGH EFFICIENCY

The Land of Legends Theme Park, a unique concept that blends perfectly in with every aspect of a holiday, pioneers a brand new entertainment concept with impressive architecture and creativity. The park has chosen Wilo for trouble-free service in its pump systems. Products such as Stratos Giga, Helix V, Helix Excel, Yonos MAXO and RexaLift were used in the project, nearly 1000 in total. Wilo also provides project support and hassle-free after-sales services. With its vision of sustainable quality, Wilo continues to provide solutions to its after-sales Service and Service needs in the Land of Legends Theme Park as well as its other major projects.



VARYAP MERIDIAN



MIXED ECOLOGICAL PROJECT

Within the scope of the Varyap Meridian project, there are 5 towers of 20 to 60 floors containing a total of 1,500 residences, a business center with 50,000 m² rental space, a 20,000 m² office building, a 5-star hotel to be given to an international brand and commercial areas. Varyap Meridian has been built with an understanding of holistic sustainability, which is the most accepted approach in recent years in the international real estate development sector and requires design and implementation in harmony with the natural environment. Innovative technologies and the opportunities provided by LEED criteria are returned to the landlords as lower dues and overheads.

FACTS

Country: Turkey

City: Istanbul

Segment: Building Services
Commercial

Applications: HVAC, Water supply

Products: Wilo-CronoLine-IL, Wilo-VeroLine-IPL, Wilo-Stratos, Wilo-TOP-Z, Wilo-Multivert MVI, Wilo-Comfort COR-MVI, Wilo-DrainLift, Wilo-RexaLift



EMAAR MALL



RELIABILITY FOR A SUPER MALL

The shopping and lifestyle center EMAAR Square Mall is one of the biggest malls in Turkey. In accordance to the diversified needs of the multi-use complex like Residences, Heights, The Address Residence Istanbul, The Address Residence Skyview Istanbul, Wilo Turkey was chosen to carry out the supply. Wilo pumps and panels are used in all heating-cooling-circulation systems, booster systems, wastewater drainage systems and fire-fighting systems of the project, which creates a new neighborhood on the Anatolian side of Istanbul.

FACTS

Country: Turkey

City: Istanbul

Segment: Building Services
Commercial

Applications: HVAC, Water supply

Products: Wilo-Yonos MAXO, Wilo-CronoLine-IL, Wilo-CronoLine-IL-E, Wilo-CronoNorm-NL, Wilo-Helix V, Wilo-Multivert MVI, Wilo-DrainLift, Wilo-RexaLift



YDA CENTRE



A MALL FOR A MODERN ANKARA

The YDA Center project, launched in Söğütözü, the heart of Ankara, is preparing to be among the city's symbols due to its extraordinary architecture and modern design. In this large project, water supply is ensured by Wilo's intelligent pressure boosting systems and the highest technology standard for 165 metres. The project included fixed-speed pumps and frequency converter control panels to ensure that the circulation and pressure booster pumps provide variable capacity requirements throughout the day and do not operate continuously at the highest capacity. In addition to water supply and circulation pumps, Wilo provided waste water removal pumps.

FACTS

Country: Turkey

City: Ankara

Segment: Building Services
Commercial

Applications: All

Products: Wilo-CronoLine-IL, Wilo-VeroLine-IPL, Wilo-VeroLine-IP-E, Wilo-RexaLift FIT L2, Wilo-DrainLift, Wilo-Rexa UNI, Wilo-Economy CO-Helix V



FACTS

Country: UK

City: Isle of Man

Segment: Building Services
Commercial

Applications: HVAC

Products: Wilo-CronoTwin-DL-E, Wilo-CronoBloc BL

£11,000 SAVINGS PER ANNUM

Wilo high efficiency pumps are helping a leading Building Services Engineer achieve his ambition of reducing a Government's energy bill by 5%, year on year, through the sharing of the company's energy solutions expertise. The Wilo DL-E models have been installed in the various Sub-heat stations around the site. Each Sub-heat station has a pump for Constant Temperature and one for Variable Temperature requirements. Already the Pathology department, the theatres, Intensive Care Unit, Accident and Emergency and Fractures clinic and the Estates and Kitchens areas have been switched to new pumps.



POPLAR HARCA



IMPROVING WATER QUALITY

Poplar Housing and Regeneration Community Association (HARCA) owns and manages around 10,000 homes in East London. Like many social housing providers, the organisation realises the importance of clean water in heating systems to ensure that the systems operate efficiently. Wilo-SiClean Comfort is integrated into heating systems to provide automated circulating water cleaning. Over the period of the trial, the results showed huge improvement to the system circulating water – a large reduction in conductivity and a reduction of the iron in the water samples taken.

FACTS

Country: UK

City: London

Segment: Building Services
Commercial

Applications: HVAC

Products: Wilo-SiClean
Comfort



FRIARGATE



FACTS

Country: UK

City: London

Segment: Building Services
Commercial

Applications: HVAC, Water
Supply

Products: Wilo-CronoLine-
IL-E, Wilo-VeroTwin-DP-E,
Wilo-CronoTwin-DL-E,
Wilo-CronoLine-IL

„DRIVING“ A LANDMARK BUILDING

The area around Coventry is undergoing an impressive transformation as regeneration comes back. And Wilo UK has had a major role to play in providing all the pumps for the new home of Coventry City Council. Comprising 3,200,000 sq ft of mixed-use development, once completed, it will deliver a total of 25 efficient and sustainable buildings, including Grade A office buildings, shops, restaurants, two hotels and new homes, high quality landscaped public spaces and the create 15,000 new jobs. Wilo provides primary and secondary heating, chilled water and Cooling water pumps as well as a domestic cold water booster set.

WATER MANAGEMENT



SANAE IV BASE



OPERATION UNDER EXTREME CONDITIONS

Located in Vesleskarvet, Queen Maud Land, the research base is part of the South African National Antarctic Program (SANAP). Its research fields include: Oceanography, biology, geology and geomorphology. The refurbishment included cold water supply, hot water circulation, snow melter for potable water, FCU pumps and Genset cooling pumps to supply water up to 100°. Compact pressure boosting sets – Helix VE with special manifolds (316 s/steel), special valves and transducers handle hot water. All of them highly efficient (IE4), which results in energy savings.

FACTS

Country: Antarctica

City: Queen Maud Land

Segment: Water Management

Applications: Water supply

Products: Wilo-SiBoost
Smart Helix VE



WWTP INSTALLATION



FACTS

Country: Australia

City: Emerald

Segment: Water
Management

Applications: Drainage &
Sewage

Products: Wilo-EMU FA,
Wilo-Comfort CO-4HELIX, TR

PREMIUM PUMP SOLUTION

The WWTP processes the wastewater from a population of over 10,000 people into sustainable effluent irrigation to be used in the region. Prior to the much needed redevelopment, the WWTP was under pressure, receiving almost twice its hydraulic capacity. The efficiency of this particular pump station is especially important, not only due to a quickly growing population but also due to the frequency of droughts in the area and the positive impact recycled water has during these dramatic environmental events. The plant required premium pump solutions that would not only double their capacity, but could also be installed efficiently, operated easily and maintained locally.



WWTP INSTALLATION



FACTS

Country: Australia

City: Kingaroy

Segment: Water Management

Applications: Drainage & Sewage

Products: Wilo-EMU FA, Wilo-Helix VE

MINIMISING ENVIRONMENTAL IMPACTS

The project has delivered significant benefits for residents and businesses across Kingaroy, allowing for projected population growth over the next 20 years, utilising Australian-first technology to minimise environmental impacts while delivering high-quality wastewater with reduced operating costs. Wilo Australia have succeeded in showing its capability as a complete solutions provider in the water management field. Wilo supplied both wastewater transport and water boosting pumps for this advanced and exciting Australian project.



ZHONGHUAN SUN POWER



OPERATIONAL RELIABILITY

Inner Mongolia Zhonghuan Solar Materials Co. Ltd. is a silicon materials manufacturer. The Company mainly manufactures monocrystalline silicon ingots and wafers used in solar cells. They are engaged in green projects which focus on renewable energy cells. Inner Mongolia is a high-tech enterprise with a provincial Research & Development centre. It was also honoured as the autonomous intellectual property pilot enterprise in the region. 148 high-efficient Wilo-pumps contribute to the reliable operation inside the building.

FACTS

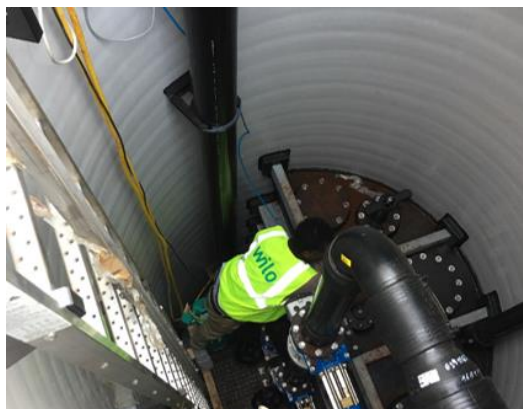
Country: China

City: Huhhot

Segment: Water
Management

Applications: Drainage &
Sewage

Products: Wilo-CronoNorm-
NL, Wilo-NX



METTU UNIVERSITY



FACTS

Country: Ethiopia

City: Addis Ababa

Segment: Water Management

Applications: Water supply

Products: FS3000 Wilo-EMUport with solid separation system

SERVING THE COMMUNITY

Mettu University (MeU) is located 600 km outside of the capitol Addis Ababa, in the Oromia National Regional state. MeU required three sewage transfer stations due to topographical features of the university. Wilo proposed advanced technology with the EMUport, including the solid separation system as well as social, economical benefits than a conventional waste water pumping station. High operational reliability, no clogging, odor-free, hygienic, low maintenance cost, less space needed, long service life, no civil construction, design support, local after sales service.

NEW

RESE LEOVILLE

PERFORMANCE AND STRENGTH

RESE (Régie d'exploitation des Services d'Eau de la Charente-Maritime) manages operation issues and governance regarding water management in the region of Charente-Maritime in France. After the installation of 4 Wilo-Zetos K8 pumps in their fleet, a fifth Wilo-Zetos K8 pump in the pump has been ordered and is being manufactured. This allowed us to win a secondary market for renewal of a "Pleuger" pump on the oldest and largest drilling rig in the Charente-Maritime (Bouil du Chambon).



FACTS

Country: France

City: Leoville

Segment: Water Management

Applications: Water supply

Products: Wilo-Zetos K8

NEW

TBILISI WATER SUPPLY



FACTS

Country: Georgia

City: Tbilisi

Segment: Water Management

Applications: Water supply

Products: Wilo-EMU FA, Wilo-EMUpport, Wilo-CronoNorm-NLG, Wilo-Sub TWI, Wilo-Zetos

MODERN WATER TREATMENT

Tbilisi – a multi-ethnic, multi-cultural, multi-religious city on the crossroads of history, a city neither European nor Asian but a heady blend of both East and West. Tbilisi was founded in the 5th century AD and has attracted visitors ever since, drawn by the hot springs for which the city is named, by the lively atmosphere of its cobbled streets and caravanserais or simply by what Alexandre Dumas called the “city of legend and romance.” Water supply and sanitation in Georgia is characterized by achievements and challenges. Among them is the improvement of water services in the capital, where the water supply is now continuous and of good quality



UREKI WATER SUPPLY



FACTS

Country: Georgia

City: Ureki

Segment: Water Management

Applications: Water supply, Drainage & Sewage

Products: Wilo-EMU FA, Wilo-EMUpport, Wilo-CronoNorm-NLG, Wilo-Sub TWI, Wilo-Zetos

MODERN STANDARD WATER SUPPLY

To significantly reduce the threat of pollution and improving the living conditions, Ureki's ministry ordered the creation of a water treatment facility – as they never had a centralized system. It is a large-scale project and will have an enormous impact on the life on site – by ensuring continuous water supply. The whole project includes 97 pumps, 32 sewer pumping stations, 3 NLG pumps Booster Set, 7 borehole pumps and control panels. It comprises the laying of 65 km water supply pipelines, 55 km sewage pipelines, the construction of two reservoirs one water supply pumping station, 31 sewage pumping stations and the drilling of 7 drinking water wells.



KUTAISI WATER SUPPLY



WATER REHABILITATION

Kutaisi is a city that plays a very important role in Georgia's political and economic life. Still, the city lacked of a proper water supply system for the more than 200k inhabitants. The water rehabilitation project optimises and extends the municipal sewerage system and construct a mechanical biological wastewater treatment plant in Kutaisi. It is one of the world's oldest continuously inhabited cities. It was founded around 4 millenniums ago. The cradle of ancient civilization in Georgia always served as a main cultural and educational center of the region.

FACTS

Country: Georgia

City: Kutaisi

Segment: Water Management

Applications: Water supply

Products: Wilo-Actun ZETOS K8



WATERWORKS MOOS



FACTS

Country: Germany

City: Moos

Segment: Water Management

Applications: Water supply

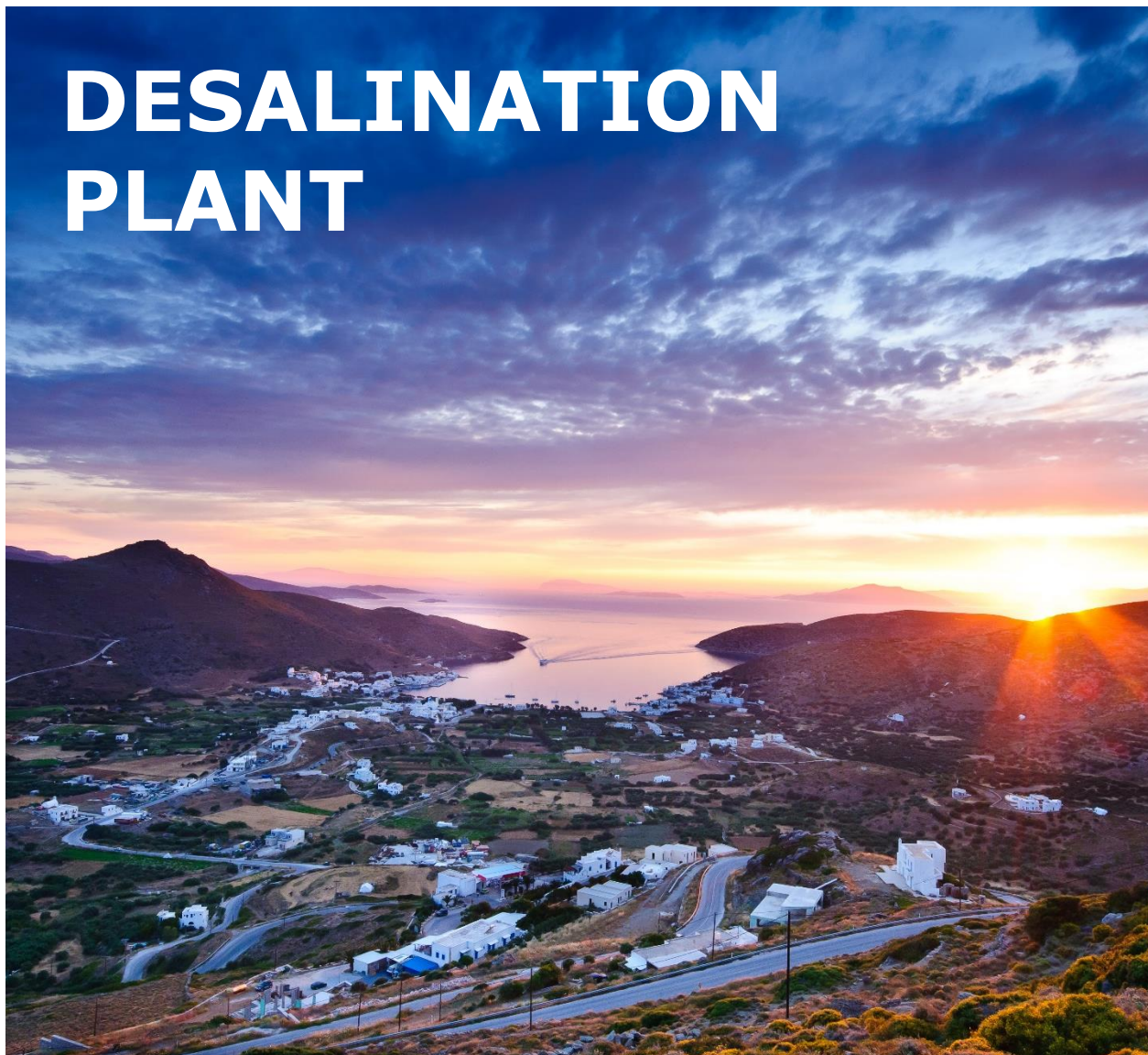
Products: Wilo-Zetos, CronoBloc BL, Wilo-Helix VE, Wilo-Multivert MVI

SOFT FOREST WATER

15 communities in the Bavarian Forest are supplied with soft forest water from the new waterworks in Moos - thanks to an innovative softening process. An important component of the ultra-modern plant: 67 Wilo pumps. It is probably the most modern waterworks in Europe - with an important goal: it is intended to further strengthen the security of supply of healthy drinking water for the people in Eastern Bavaria. The plant, operated by the "Zweckverband Waldwasser", supplies 15,000 private households south of the Danube with softened drinking water - soft forest water. Up to 400 cubic metres per hour are fed into the networks.



DESALINATION PLANT



EFFICIENT DRINKING WATER PRODUCTION

Due to water supply problems on Amorgos, a desalination plant has been in operation for years. To upgrade and optimise the facility, the project "ACCOMPANYING WORKS OF DESALINATION PLANT IN AEGIALI AMORGOS" came to tender. The project was awarded to a construction company and included the commission of two borehole pumps (50m³/h-77m each), suitable to transfer sea water to the tank of the desalination plant as well as one booster set (2x20m³/h-67m) to distribute the clean water from the desalination plant.

FACTS

Country: Greece

City: Amorgos (Island)

Segment: Water Management

Applications: Water supply

Products: Wilo-Zetos, Wilo-SiBoost Smart Helix VE



FACTS

Country: Kazakhstan

City: Nur-Sultan

Segment: Water Management & Industry

Applications: Water supply

Products: Wilo-SiBoost
Smart Helix VE,
Wilo-CronoNorm-NL,
Wilo-CronoLine-IL-E,
Wilo-SiFire



FUTURE ENERGY IN KAZAKHSTAN

The Kazakhstan Pavilion and Science Museum, known as Nur-Alem in the country, is the iconic, high-performing centerpiece of the 2017 EXPO. The site has been transformed into a Post-Expo development with cultural facilities, an office and research park, and residential components that seeks to attract international entrepreneurs. Inspired by the EXPO-2017 theme, “Future Energy,” the Kazakhstan Pavilion and Science Museum embodies a futuristic design that is optimized to incorporate sustainable philosophies.



FACTS

Country: Kazakhstan

City: Nur-Sultan

Segment: Water
Management & Industry

Applications: Water supply

Products: Wilo-CronoLine-IL, Wilo-CronoBloc BL, Wilo-CronoNorm-NL, Wilo-Helix VE



REAL ESTATE GIANT

The administrative complex EMERALD QUARTER consists out of a 37-and 49-floor building. The taller building is around 201 metres high and thus it is the tallest building in Kazakhstan. The architecture of EMERALD QUARTER has numerous unique features; starting from the 32nd floor the area of the further levels increases. Thus, the buildings become asymmetrical with the top part inclining to 9 meter. The weight of the tallest building is 186 thousand tons. The pile and fundament plate with the thickness of 3 meters are used as a basis of this construction.



„KAZ MINERALS“ MINING COMPANY



STRATEGIC GROWTH

KAZ Minerals is the largest copper producer in Kazakhstan. Copper is essential for all modern infrastructure, energy generation and transmission, transportation, communications, industrial machinery and electrical appliances. The Aktogay mine is a large scale, open pit operation similar to Bozshakol. Aktogay commences production of copper cathode from oxide ore. In 2018, about 3.0 million tons of ore were extracted in the Eastern region of Kazakhstan, 3.0 million tons were processed and 58 thousand tons of copper were produced. Wilo Central Asia has been working with the KAZ Minerals group from 2013 to the present.

FACTS

Country: Kazakhstan

City: Aktogay

Segment: Water Management

Applications: Drainage & Sewage

Products: Sewer pumping stations, Pumps for circulation and heating, Pressure boosting systems, Sewage pumps, Spare parts for turbine pumps



KAZZINC PLANT



FACTS

Country: Kazakhstan

City: Ust-Kamenogorsk

Segment: Water
Management & Industry

Applications: Water supply

Products: Wilo-CronoLine-IL, Wilo-CronoBloc-BL, Wilo-CronoNorm-NL, Wilo-Helix VE

SIGNIFICANT COOPERATION

Kazzinc is a large integrated producer of zinc with a large share of the associated production of copper, precious metals and lead. The main enterprises of the company are located in the Republic of Kazakhstan, most of all in the East Kazakhstan region. The company continues to grow, striving to take a stable place in the top five enterprises in the world zinc industry with the lowest production costs. Wilo Central Asia has been working with Kazzinc LLP from 2006. Over the past 10 years, WILO Central Asia has supplied almost the entire range of WILO pumping equipment. Equipment was delivered to Kazzinc enterprises located more than five cities of Kazakhstan.



WINDHOEK DROUGHT RELIEF



FACTS

Country: Namibia

City: Windhoek

Segment: Water Management

Applications: Water supply

Products: Wilo-Zetos K8

SMART WATER SOLUTION

Water supply is a critical subject in Namibia. This is due to regular severe droughts. The city of Windhoek, capital of Namibia, was forced to secure and diversify the supply of potable water.

One of the solutions is to abstract water from boreholes. With best in class hydraulic efficiency the Zetos borehole pumps offer the client the ability to supply the city with water while saving energy. Due to extreme drought conditions the City of Windhoek was facing the reality of running out of water. In order to avoid this disaster, the City drilled boreholes to inject extra water into their infrastructure.



GRAVITY AND PRESSURE DRAINAGE SYSTEM



SOLID SOLUTIONS

The aim of the investment was to build a gravity and pressure drainage system, along with pumping stations as well as power supply and main water connections in the following villages in the Gniewino municipality: Mierzyno, Mierzynko and Rukowo. The rising content of solids in sewage is becoming increasingly challenging, not only in the context of sewage disposal from entire villages or settlements, but also from public buildings, hotels, hospitals, shopping centres and office buildings. A solution to this problem is a pumping station with solid separation system ensuring the highest reliability and effective sewage disposal.

FACTS

Country: Poland

City: Mętów i Głuszczyzna

Segment: Water Management

Applications: Drainage & Sewage

Products: Wilo-EMUport Core



GRAVITY AND PRESSURE DRAINAGE SYSTEM

NEW



CLOGGING- PREVENTION

Głuszczyzna can be found around 15 kilometres outside of Lublin. The main problem with sewage disposal from the villages of Mętów and Głuszczyzna had been a high groundwater level and frequent pump clogging in the conventional pumping stations used at that time. Correct operation of the mixed pressure and gravity drainage system was not possible. As a solution, EMUport FS200 and Core 20.2 were selected. Wilo's durable solution provides the best operational reliability for clog-free transport. Moreover, it provides easy maintenance thanks to its hygienic dry well installation and easy access from outside.

FACTS

Country: Poland

City: Mętów i Głuszczyzna

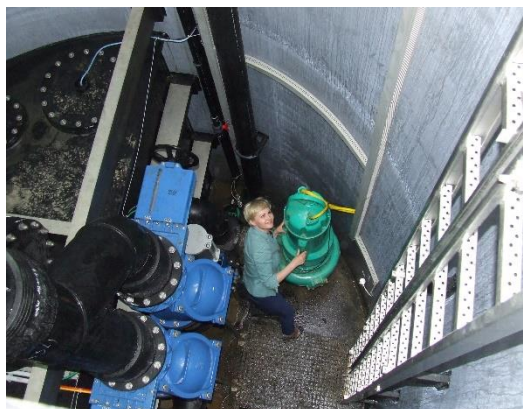
Segment: Water Management

Applications: Drainage & Sewage

Products: Wilo-EMUport FS200, Core20.2

NEW

PUBLIC UTILITY ŻYRARDÓW



MODERNISATION FOR EFFICIENCY

The project involved replacement of the existing old pumpig station installed in a facility in Kanałowa street in Żyrardów with an EMUport in a PEHD shaft. This was the first pumping station with solid separation systems in Żyrardów. Moreover, between 2014 and 2019, 4 smaller pumping stations with solid separation systems have been installed in Żyrardów. The modernisation project involved the delivery and outdoor installation of a compact EMUPORT FS 3000 of inside diameter = 3,0 m, a visualisation system, and eventually, adaptation of the building for other purposes.

FACTS

Country: Poland

City: Żyrardów

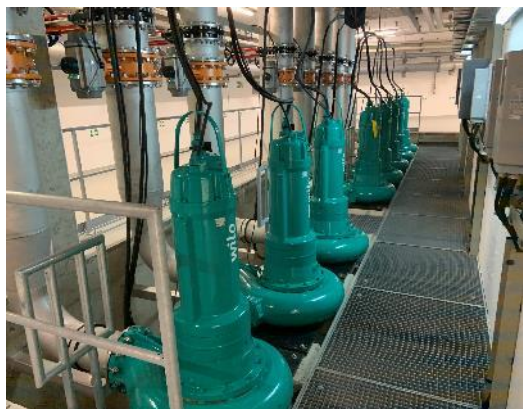
Segment: Water
Management

Applications: Drainage &
Sewage

Products: Wilo-EMUport FS
3000, Wilo-EMUport FS
3600, MS 740, MS 1200 -
2000, Wilo-EMUport CORE
20.2

NEW

ARA SCHÖNAU



FACTS

Country: Switzerland

City: Cham

Segment: Water
Management

Applications: Drainage &
Sewage

Products: Wilo-EMU FA
25.93D, FKT 27.2-8/40K-E3

ELIMINATING MICROPOLLUTANTS

The WWTP collects the wastewater in the catchment area of the three lakes in its associated municipalities, channel it to its central wastewater treatment plant Schönau in Cham below Lake Zug and treat it there.

Currently, ARA Schönau has undergone an expansion for the elimination of micropollutants. The existing return sludge pumping station will be used as a pumping station for the EMC stage in the future. The waste water is raised by the pumping station and fed to the reactor basin, which has two lines, for mixing in the powdered activated carbon.



BROKEN SCAR

FACTS

Country: UK

City: Darlington

Segment: Water Management

Applications: Water supply

Products: Wilo-K147 CT

REDUCING WATER EXTRACTION COSTS

Broken Scar is one of Northumberland Water's principal water treatment works, serving the population of Teesside and East Cleveland. The works has a nominal capacity of 180 million litres per day and abstracts raw water from the river Tees. Initially a complete performance and system analysis was undertaken of the existing installation and modelling suggested high potential savings – forecasting £28,851 per annum. A new K147 hydraulic was selected together with the award winning CERAM “CT” on wear surfaces. This hydraulic was coupled to an asynchronous motor with an internal cooling shroud – offering an optimised pump selection.



JIZZAKH CITY



REFURBISHMENT FOR OPTIMISED WATER SUPPLY

As part of a big scheme to develop and rehabilitate the irrigation system in the Republic of Uzbekistan, Shimbar (one of the major industrial and construction contractors in the Middle East and Central Asia) completed two projects for water transmission and pumping stations. The Jizzakh project includes a 18 m³/s, 15 metres head pumping station as well as pipelines and irrigation channels. These projects were funded by the Islamic and Asian Development Bank and completed according to the highest, international standards.

FACTS

Country: Uzbekistan

City: Tashkent

Segment: Water Management

Applications: Water supply

Products: Wilo-CronoNorm-NL, Wilo-EMU FA, Wilo-SCP, Wilo-Helix VE



FACTS

Country: Uzbekistan

City: Tashkent

Segment: Water Management

Applications: Water supply

Products: Wilo-CronoLine-IL



RELIABLE DAY-TO-DAY BUSINESS

This airport is the primary hub of Uzbekistan Airways and also the largest international airport in Uzbekistan. It comprises two terminals – one for international flights and one for domestic traffic. Terminal 2 has a capacity of 1,000 passengers per hour and serves more than two million passengers per year. It also includes waiting lounges, VIP halls, restaurants and bars etc. Terminal 3 has a capacity of 400 passengers per hour. To keep up with the high frequency of passengers, efficient Wilo pumps are in operation to ensure a reliable business every day.

INDUSTRY



ALMALYK MINING COMPLEX



TRUSTED PARTNERSHIP

The production capacity of the Mining-Metallurgical complex is mainly focused on the reserves of a group of copper, lead-zinc and gold-silver deposits on the territories of Tashkent, Jizzakh, Namangan and Surkhandrya. Today, JSC „Almalyk MMC“ is a multi industrial complex, with seven open mines, four underground gold mines, five plants, two metallurgical plants and much more. Apart from supplying pumps, Wilo carries out energy efficient solutions for the whole object.

FACTS

Country: Uzbekistan

City: Tashkent

Segment: Industry

Applications: Drainage & Sewage

Products: Wilo-Sub TWI, Wilo-Sub TWU, NU

NEW

ROCA POLAND



FACTS

Country: Poland

City: Gliwice

Segment: Industry

Applications: Water supply

Products: Wilo-SiBoost
Smart 3 Helix VE 1603/3kW

HIGH-EFFICIENT FIREFIGHTING

In 2016, Roca Poland's sanitary ceramics production plant expanded its production and storage hall in Gliwice. This led to the need to modernize the network of internal hydrants and the fire pumping station powering this network. Challenge - a problem to solve: the old pumping system, which did not comply with fire regulations and standards, together with a backup underground water tank used to supply the internal hydrant network had to be modernized or replaced with a new system. The compact SiBoost Smart 3Helix VE 1603/3kW from Wilo was used to power the extensive indoor hydrant network.