

# Submittal Data Sheet

Wilo CO-Helix - NSF 61/372 Pressure Boosting System



# Submittal Data Sheet

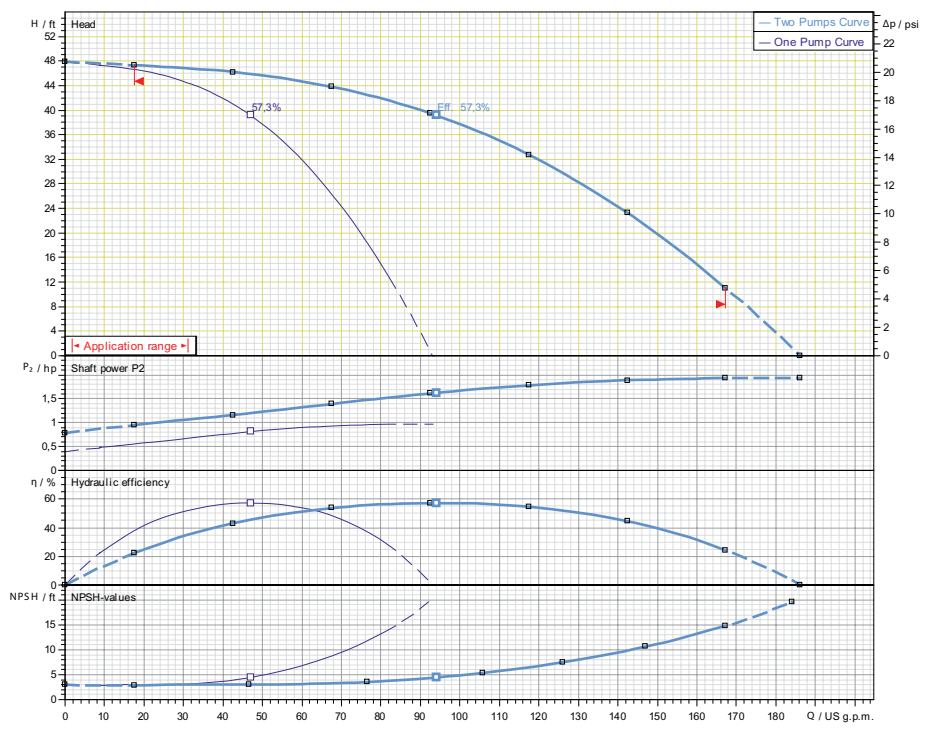
Wilo CO-Helix - NSF 61/372 Pressure Boosting System



## CO-2 HELIX V50-01-1/1/VCE

|  |               |       |
|--|---------------|-------|
|  | Project:      |       |
|  | Engineer:     |       |
|  | Contractor:   |       |
|  | Submitted By: | Date: |
|  | Approved By:  | Date: |

| Tag # | Model #                   | Flow | BOOST PSI | Min. Inlet PSI | HP/Pump | Phase | Voltage | RPM  |
|-------|---------------------------|------|-----------|----------------|---------|-------|---------|------|
|       | CO-2 HELIX V50-01-1/1/VCE |      |           |                | 1       |       |         | 3600 |



- ### Applications
- Water Supply
  - Agriculture
  - Washing / Sprinkling Systems
  - Pressure Boosting
  - Cooling Circuits
  - Condensate Return

### Materials of Construction

|                      |   |
|----------------------|---|
| Pump Volute          | AISI304 stainless steel with ANSI flanges   |
| Impeller             | 3D Laser welded AISI 304 Stainless Steel  |
| Shaft                | AISI304, AISI318 LN, or AISI431 Stainless Steel   |
| Elastomers           | EPDM  |
| Isolation Valves     | 304 Stainless Steel Ball Valves   |
| Check Valves         | Wafer Style, 316 Stainless Steel internals, Non-slam, Plunger-type with EPDM seal/ Cast Iron Body |
| Mechanical Seal      | Cartridge Seal: Sleeve AISI316L / Spring Clips AISI304  |
| Pressure Transducers | 316 Stainless Steel   |
| Pressure Gauges      | 304 Stainless Steel Housing with 316 Stainless Steel wetted parts                                 |
| System base          | Steel (S235JR)  |
| Vibration Isolators  | Neoprene, Height Adjustable   |

### Technical Data - Operational Ranges

|                     |  |
|---------------------|--|
| Liquid Temp Range   | -4°F to +248°F (Min. 32 °F for Domestic Water) |
| Ambient Temp Range  | +32°F to +104 °F                               |
| Max Inlet Pressure  | 145 PSI  |
| Max System Pressure | 232 PSI  |

### Technical Data - Panel

|                           |  |
|---------------------------|--|
| Power Supply              | 208-230/460-3 or 575-3   |
| Enclosure                 | NEMA 12 (3R Available Upon Request)  |
| Standard                  | Meets UL 508A  |
| Variable Frequency Drives | Danfoss FC-51 (1-10 HP for 208-23/460v-3)<br>Danfoss FC-101 (1-10 HP for 575v-3) |

### Technical Data - PLC

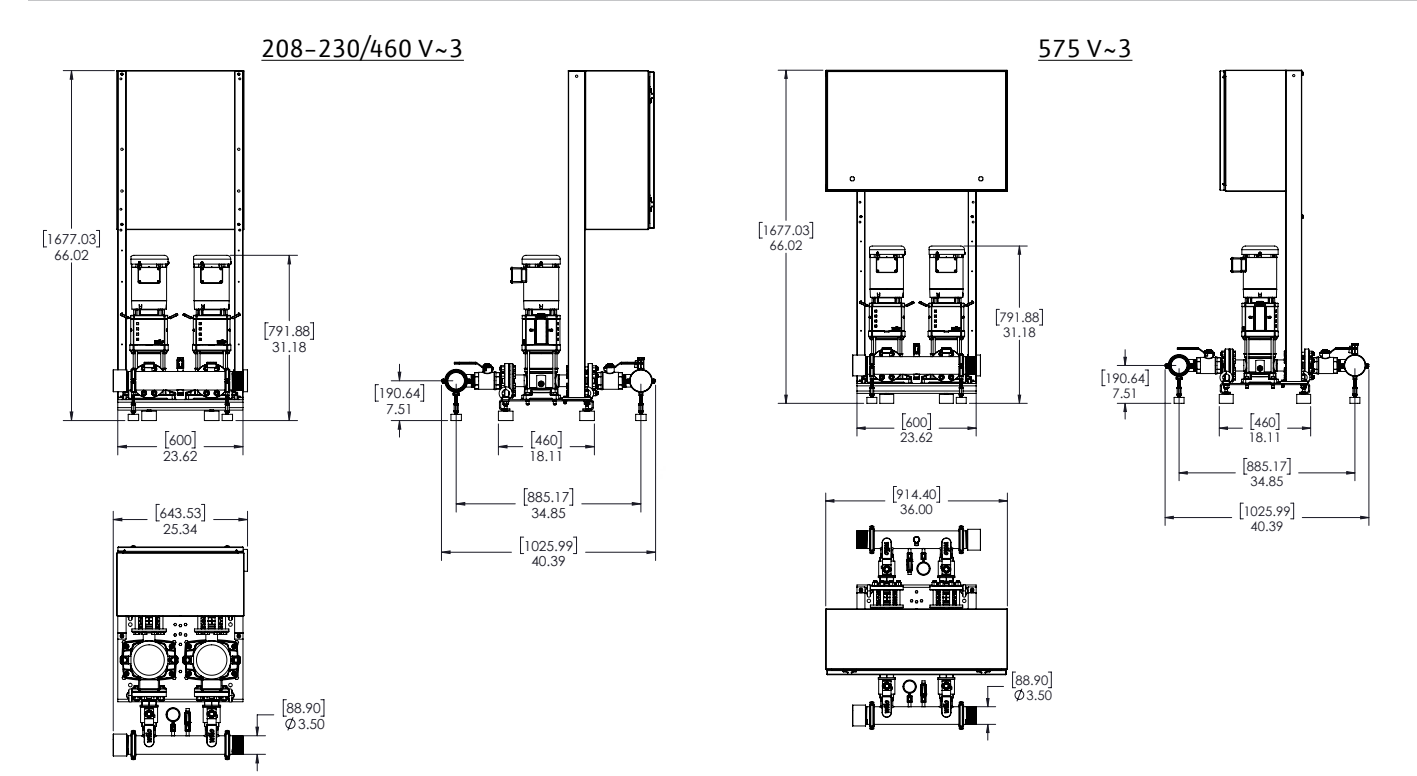
|                           |  |
|---------------------------|--|
| User Interface            | 7" Diagonal Color LCD Touchscreen                                    |
| Display Resolution        | 800 x 480 Pixels   |
| Supply Voltage            | 24VDC  |
| Max. Current Consumption  | 320mA@24V  |
| Number of Analog Inputs   | 9  |
| Number of Analog Outputs  | 2  |
| Number of Digital Inputs  | 18   |
| Number of Digital Outputs | 17   |
| Onboard Communications    | Modbus Protocol (Optional Gateways for BacNET, LonWorks, and CANbus) |
| Ethernet Port             | RJ45 port capable of transmitting data 10/100Mbps                    |
| Additional Ports          | 2.0 USB Port; Micro-SD Port  |

### Motor Data

|                        |   |
|------------------------|---|
| Power Supply           | 208-230-3 or 460-3 or 575-3                           |
| Motor Enclosure        | Totally Enclosed Fan Cooled (TEFC)                    |
| Motor Efficiency       | Nema Premium Efficiency (IE3) - Meets NEMA 12-12 Rule |
| Enclosure Construction | Rolled Steel / Cast Iron                              |
| Motor Protection Index | IP54  |
| Insulation Class       | F   |

Approval Stamp

## CO-2 HELIX V50-01-1/1/VCE



Special Note: All weights and dimensions are approximate and should not be used as exact rough-in dimensions

### Dimensions and Weights

| Model                     | Voltage (V)   | Dimensions-inches |        |        |                   | System Header Size | Suction / Discharge Pump Size (300 Class ANSI) | Gauge Tap Size | Transducer Tap Size   | Hydronumatic Tank Valve on Manifold (Plugged) | Individual Pump Weight | Package Weight |
|---------------------------|---------------|-------------------|--------|--------|-------------------|--------------------|--|----------------|-----------------------|---|------------------------|----------------|
|                           |               | H (in)            | W (in) | L (in) | Pump Weight (lbs) |                    |  |                |                       |   | Package Weight (lbs)   |                |
| CO-2 HELIX V50-01-1/1/VCE | 208-230/460 V | 66                | 24-3/8 | 40-3/8 | 3" MNPT           | 2"                 | 1/4" FNPT                                      | 1/4" FNPT      | 3/4" MNPT x 3/4" FNPT | 87  | 500                    |                |
|                           | 575 V         | 66                | 36     | 40-3/8 |                   |                    |  |                |                       |   |                        |                |

### TEFC Motor Data

| Model                     | P2 (HP) | Phase (-) | Voltage (V)     | FLA (per pump) (A) | Pmax (PSI) |
|---------------------------|---------|-----------|-----------------|--------------------|------------|
| CO-2 HELIX V50-01-1/1/VCE | 1       | 3         | 208-230/460/575 | 3-2.8/1.4/1.1      | 232        |

WILO USA LLC +1 262 204-6600  
www.wilo-usa.com  
info@wilo-usa.com

WILO Canada Inc. +1 403 276-9456  
www.wilo-canada.com  
info@wilo-canada.com

# Submittal Data Sheet

Wilo CO-Helix - NSF 61/372 Pressure Boosting System



# Submittal Data Sheet

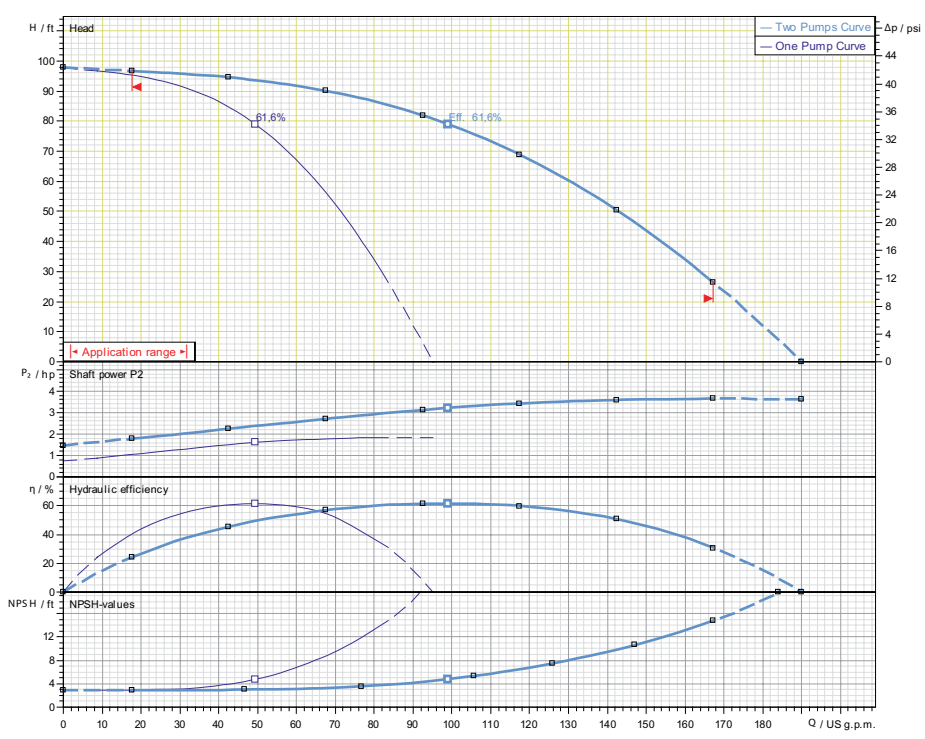
Wilo CO-Helix - NSF 61/372 Pressure Boosting System



## CO-2 HELIX V50-02-1/2/VCE

|  |               |       |
|--|---------------|-------|
|  | Project:      |       |
|  | Engineer:     |       |
|  | Contractor:   |       |
|  | Submitted By: | Date: |
|  | Approved By:  | Date: |

| Tag # | Model #                   | Flow | BOOST PSI | Min. Inlet PSI | HP/Pump | Phase | Voltage | RPM  |
|-------|---------------------------|------|-----------|----------------|---------|-------|---------|------|
|       | CO-2 HELIX V50-02-1/2/VCE |      |           |                | 2       |       |         | 3600 |



### Applications

- Water Supply
- Agriculture
- Washing / Sprinkling Systems
- Pressure Boosting
- Cooling Circuits
- Condensate Return

### Materials of Construction

|                      |   |
|----------------------|---|
| Pump Volute          | AISI304 stainless steel with ANSI flanges   |
| Impeller             | 3D Laser welded AISI 304 Stainless Steel  |
| Shaft                | AISI304, AISI318 LN, or AISI431 Stainless Steel   |
| Elastomers           | EPDM  |
| Isolation Valves     | 304 Stainless Steel Ball Valves   |
| Check Valves         | Wafer Style, 316 Stainless Steel internals, Non-slam, Plunger-type with EPDM seal/ Cast Iron Body |
| Mechanical Seal      | Cartridge Seal: Sleeve AISI316L / Spring Clips AISI304  |
| Pressure Transducers | 316 Stainless Steel   |
| Pressure Gauges      | 304 Stainless Steel Housing with 316 Stainless Steel wetted parts                                 |
| System base          | Steel (S235JR)  |
| Vibration Isolators  | Neoprene, Height Adjustable   |

### Technical Data - Operational Ranges

|                     |  |
|---------------------|--|
| Liquid Temp Range   | -4°F to +180°F (Min. 32 °F for Domestic Water) |
| Ambient Temp Range  | +32°F to +104 °F                               |
| Max Inlet Pressure  | 145 PSI  |
| Max System Pressure | 232 PSI  |

### Technical Data - Panel

|                           |  |
|---------------------------|--|
| Power Supply              | 208-230/460-3 or 575-3   |
| Enclosure                 | NEMA 12 (3R Available Upon Request)  |
| Standard                  | Meets UL 508A  |
| Variable Frequency Drives | Danfoss FC-51 (1-10 HP for 208-23/460v-3)<br>Danfoss FC-101 (1-10 HP for 575v-3) |

### Technical Data - PLC

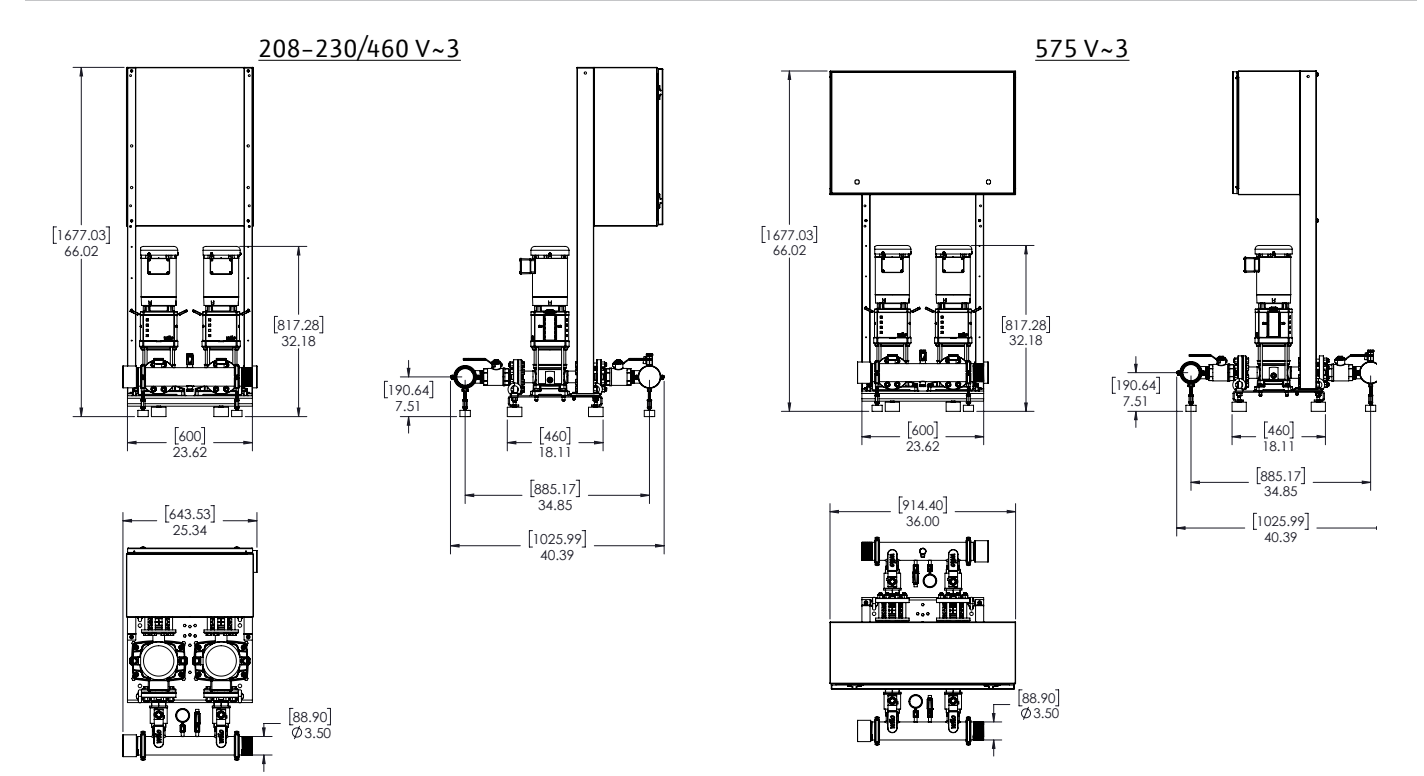
|                           |  |
|---------------------------|--|
| User Interface            | 7" Diagonal Color LCD Touchscreen                                    |
| Display Resolution        | 800 x 480 Pixels   |
| Supply Voltage            | 24VDC  |
| Max. Current Consumption  | 320mA@24V  |
| Number of Analog Inputs   | 9  |
| Number of Analog Outputs  | 2  |
| Number of Digital Inputs  | 18   |
| Number of Digital Outputs | 17   |
| Onboard Communications    | Modbus Protocol (Optional Gateways for BacNET, LonWorks, and CANbus) |
| Ethernet Port             | RJ45 port capable of transmitting data 10/100Mbps                    |
| Additional Ports          | 2.0 USB Port; Micro-SD Port  |

### Motor Data

|                        |   |
|------------------------|---|
| Power Supply           | 208-230-3 or 460-3 or 575-3                           |
| Motor Enclosure        | Totally Enclosed Fan Cooled (TEFC)                    |
| Motor Efficiency       | Nema Premium Efficiency (IE3) - Meets NEMA 12-12 Rule |
| Enclosure Construction | Rolled Steel / Cast Iron                              |
| Motor Protection Index | IP54  |
| Insulation Class       | F   |

Approval Stamp

## CO-2 HELIX V50-02-1/2/VCE



Special Note: All weights and dimensions are approximate and should not be used as exact rough-in dimensions

### Dimensions and Weights

| Model                     | Voltage (V)   | Dimensions-inches |        |        |                    |  |                |                     | Individual Pump Weight                        |                   | Package Weight       |
|---------------------------|---------------|-------------------|--------|--------|--------------------|--|----------------|---------------------|---|-------------------|----------------------|
|                           |               | H (in)            | W (in) | L (in) | System Header Size | Suction / Discharge Pump Size (300 Class ANSI) | Gauge Tap Size | Transducer Tap Size | Hydronumatic Tank Valve on Manifold (Plugged) | Pump Weight (lbs) | Package Weight (lbs) |
| CO-2 HELIX V50-02-1/2/VCE | 208-230/460 V | 66                | 24-3/8 | 40-3/8 | 3" MNPT            | 2"   | 1/4" FNPT      | 1/4" FNPT           | 3/4" MNPT x 3/4" FNPT                         | 93                | 512                  |
|                           | 575 V         | 66                | 36     | 40-3/8 | 3" MNPT            | 2"   | 1/4" FNPT      | 1/4" FNPT           | 3/4" MNPT x 3/4" FNPT                         | 93                | 512                  |

### TEFC Motor Data

| Model                     | P2 (HP) | Phase (-) | Voltage (V)     | FLA (per pump) (A) | Pmax (PSI) |
|---------------------------|---------|-----------|-----------------|--------------------|------------|
| CO-2 HELIX V50-02-1/2/VCE | 2       | 3         | 208-230/460/575 | 5.3-5.0/2.5/2.0    | 232        |

# Submittal Data Sheet

Wilo CO-Helix - NSF 61/372 Pressure Boosting System



# Submittal Data Sheet

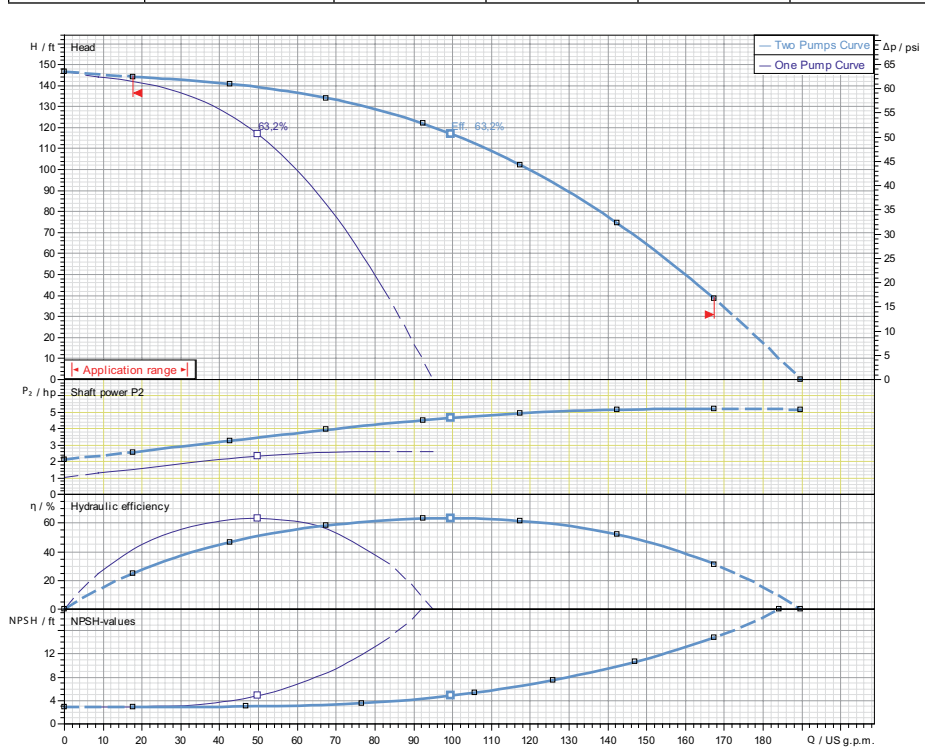
Wilo CO-Helix - NSF 61/372 Pressure Boosting System



## CO-2 HELIX V50-03-1/3/VCE

|  |               |       |
|--|---------------|-------|
|  | Project:      |       |
|  | Engineer:     |       |
|  | Contractor:   |       |
|  | Submitted By: | Date: |
|  | Approved By:  | Date: |

| Tag # | Model #                   | Flow | BOOST PSI | Min. Inlet PSI | HP/Pump | Phase | Voltage | RPM  |
|-------|---------------------------|------|-----------|----------------|---------|-------|---------|------|
|       | CO-2 HELIX V50-03-1/3/VCE |      |           |                | 3       |       |         | 3600 |



- ### Applications
- Water Supply
  - Agriculture
  - Washing / Sprinkling Systems
  - Pressure Boosting
  - Cooling Circuits
  - Condensate Return

### Materials of Construction

|                      |   |
|----------------------|---|
| Pump Volute          | AISI304 stainless steel with ANSI flanges   |
| Impeller             | 3D Laser welded AISI 304 Stainless Steel  |
| Shaft                | AISI304, AISI318 LN, or AISI431 Stainless Steel   |
| Elastomers           | EPDM  |
| Isolation Valves     | 304 Stainless Steel Ball Valves   |
| Check Valves         | Wafer Style, 316 Stainless Steel internals, Non-slam, Plunger-type with EPDM seal/ Cast Iron Body |
| Mechanical Seal      | Cartridge Seal: Sleeve AISI316L / Spring Clips AISI304  |
| Pressure Transducers | 316 Stainless Steel   |
| Pressure Gauges      | 304 Stainless Steel Housing with 316 Stainless Steel wetted parts                                 |
| System base          | Steel (S235JR)  |
| Vibration Isolators  | Neoprene, Height Adjustable   |

### Technical Data - Operational Ranges

|                     |  |
|---------------------|--|
| Liquid Temp Range   | -4°F to +180°F (Min. 32 °F for Domestic Water) |
| Ambient Temp Range  | +32°F to +104 °F                               |
| Max Inlet Pressure  | 145 PSI  |
| Max System Pressure | 232 PSI  |

### Technical Data - PLC

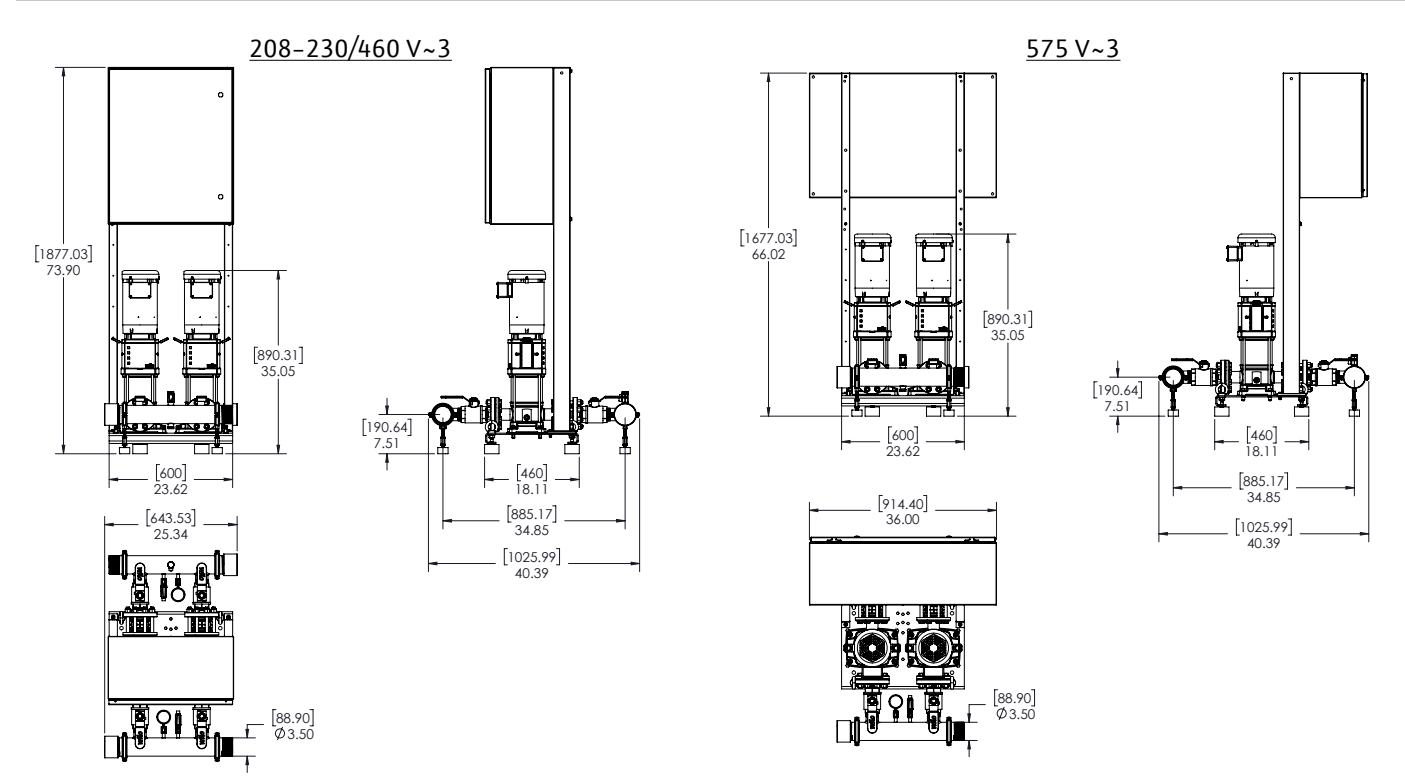
|                           |  |
|---------------------------|--|
| User Interface            | 7" Diagonal Color LCD Touchscreen                                    |
| Display Resolution        | 800 x 480 Pixels   |
| Supply Voltage            | 24VDC  |
| Max. Current Consumption  | 320mA@24V  |
| Number of Analog Inputs   | 9  |
| Number of Analog Outputs  | 2  |
| Number of Digital Inputs  | 18   |
| Number of Digital Outputs | 17   |
| Onboard Communications    | Modbus Protocol (Optional Gateways for BacNET, LonWorks, and CANbus) |
| Ethernet Port             | RJ45 port capable of transmitting data 10/100Mbps                    |
| Additional Ports          | 2.0 USB Port; Micro-SD Port  |

### Motor Data

|                        |   |
|------------------------|---|
| Power Supply           | 208-230-3 or 460-3 or 575-3                           |
| Motor Enclosure        | Totally Enclosed Fan Cooled (TEFC)                    |
| Motor Efficiency       | Nema Premium Efficiency (IE3) - Meets NEMA 12-12 Rule |
| Enclosure Construction | Rolled Steel / Cast Iron                              |
| Motor Protection Index | IP54  |
| Insulation Class       | F   |

Approval Stamp

## CO-2 HELIX V50-03-1/3/VCE



Special Note: All weights and dimensions are approximate and should not be used as exact rough-in dimensions

### Dimensions and Weights

| Model                     | Voltage (V)   | Dimensions-inches |        |        |                   | System Header Size | Suction / Discharge Pump Size (300 Class ANSI) | Gauge Tap Size | Transducer Tap Size   | Hydrumatic Tank Valve on Manifold (Plugged) | Individual Pump Weight | Package Weight |
|---------------------------|---------------|-------------------|--------|--------|-------------------|--------------------|--|----------------|-----------------------|---|------------------------|----------------|
|                           |               | H (in)            | W (in) | L (in) | Pump Weight (lbs) |                    |  |                |                       |   | Package Weight (lbs)   |                |
| CO-2 HELIX V50-03-1/3/VCE | 208-230/460 V | 73-7/8            | 24-3/8 | 40-3/8 | 3" MNPT           | 2"                 | 1/4" FNPT                                      | 1/4" FNPT      | 3/4" MNPT x 3/4" FNPT | 101   | 528                    |                |
|                           | 575 V         | 66                | 36     | 40-3/8 |                   |                    |  |                |                       |   |                        |                |

### TEFC Motor Data

| Model                     | P2 (HP) | Phase (-) | Voltage (V)     | FLA (per pump) (A) | Pmax (PSI) |
|---------------------------|---------|-----------|-----------------|--------------------|------------|
| CO-2 HELIX V50-03-1/3/VCE | 3       | 3         | 208-230/460/575 | 7.9-7.2/3.6/2.9    | 232        |

WILO USA LLC +1 262 204-6600  
www.wilo-usa.com  
info@wilo-usa.com

WILO Canada Inc. +1 403 276-9456  
www.wilo-canada.com  
info@wilo-canada.com

# Submittal Data Sheet

Wilo CO-Helix - NSF 61/372 Pressure Boosting System



# Submittal Data Sheet

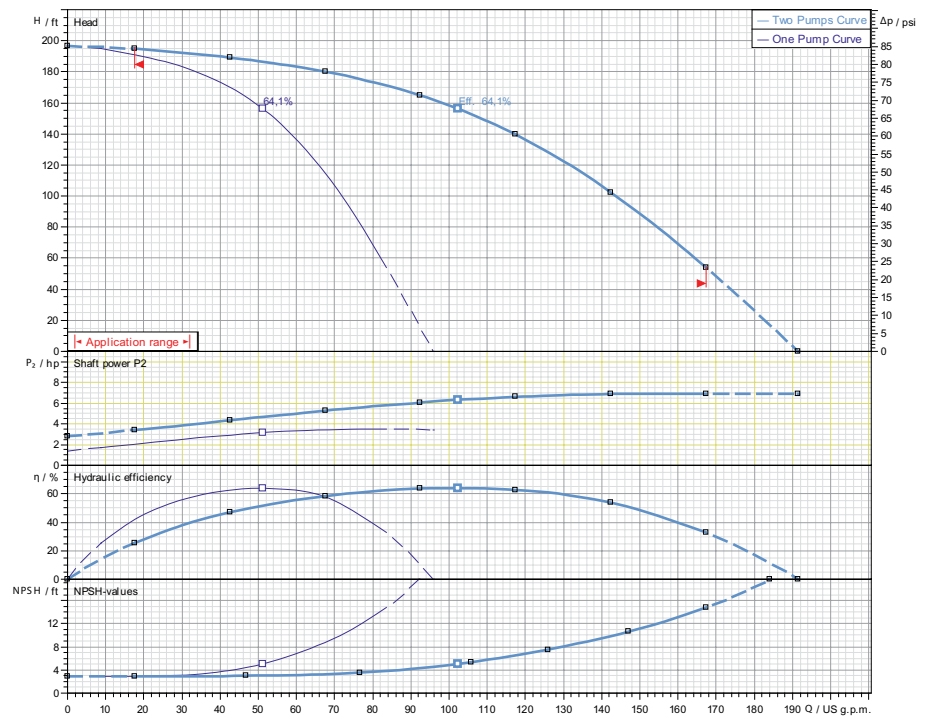
Wilo CO-Helix - NSF 61/372 Pressure Boosting System



## CO-2 HELIX V50-04-1/5/VCE

|  |               |       |
|--|---------------|-------|
|  | Project:      |       |
|  | Engineer:     |       |
|  | Contractor:   |       |
|  | Submitted By: | Date: |
|  | Approved By:  | Date: |

| Tag # | Model #                   | Flow | BOOST PSI | Min. Inlet PSI | HP/Pump | Phase | Voltage | RPM  |
|-------|---------------------------|------|-----------|----------------|---------|-------|---------|------|
|       | CO-2 HELIX V50-04-1/5/VCE |      |           |                | 5       |       |         | 3600 |



### Applications

- Water Supply
- Agriculture
- Washing /Sprinkling Systems
- Pressure Boosting
- Cooling Circuits
- Condensate Return

### Materials of Construction

|                      |   |
|----------------------|---|
| Pump Volute          | AISI304 stainless steel with ANSI flanges   |
| Impeller             | 3D Laser welded AISI 304 Stainless Steel  |
| Shaft                | AISI304, AISI318 LN, or AISI431 Stainless Steel   |
| Elastomers           | EPDM  |
| Isolation Valves     | 304 Stainless Steel Ball Valves   |
| Check Valves         | Wafer Style, 316 Stainless Steel internals, Non-slam, Plunger-type with EPDM seal/ Cast Iron Body |
| Mechanical Seal      | Cartridge Seal: Sleeve AISI316L / Spring Clips AISI304  |
| Pressure Transducers | 316 Stainless Steel   |
| Pressure Gauges      | 304 Stainless Steel Housing with 316 Stainless Steel wetted parts                                 |
| System base          | Steel (S235JR)  |
| Vibration Isolators  | Neoprene, Height Adjustable   |

### Technical Data - Operational Ranges

|                     |  |
|---------------------|--|
| Liquid Temp Range   | -4°F to +180°F (Min. 32 °F for Domestic Water) |
| Ambient Temp Range  | +32°F to +104 °F                               |
| Max Inlet Pressure  | 145 PSI  |
| Max System Pressure | 232 PSI  |

### Technical Data - Panel

|                           |  |
|---------------------------|--|
| Power Supply              | 208-230/460-3 or 575-3   |
| Enclosure                 | NEMA 12 (3R Available Upon Request)  |
| Standard                  | Meets UL 508A  |
| Variable Frequency Drives | Danfoss FC-51 (1-10 HP for 208-23/460v-3)<br>Danfoss FC-101 (1-10 HP for 575v-3) |

### Technical Data - PLC

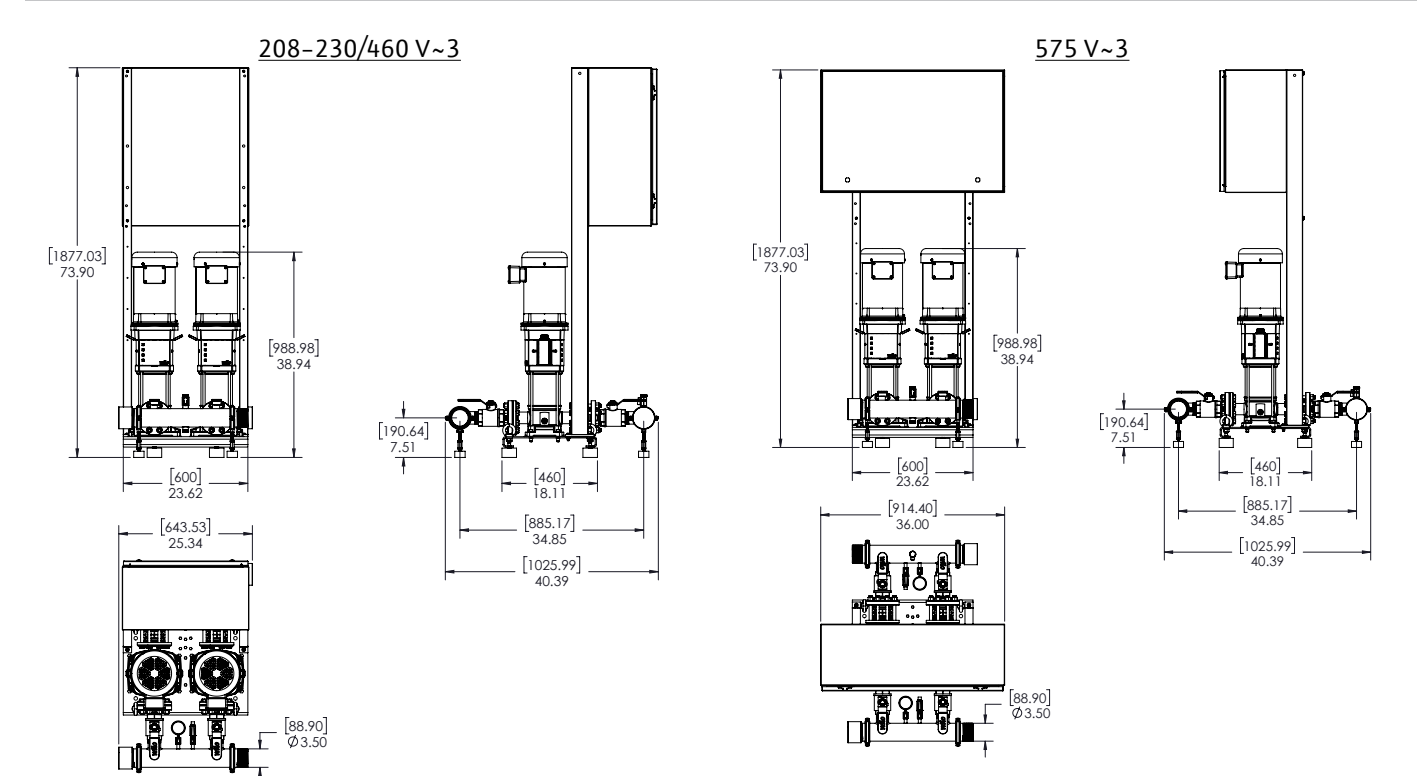
|                           |  |
|---------------------------|--|
| User Interface            | 7" Diagonal Color LCD Touchscreen                                    |
| Display Resolution        | 800 x 480 Pixels   |
| Supply Voltage            | 24VDC  |
| Max. Current Consumption  | 320mA@24V  |
| Number of Analog Inputs   | 9  |
| Number of Analog Outputs  | 2  |
| Number of Digital Inputs  | 18   |
| Number of Digital Outputs | 17   |
| Onboard Communications    | Modbus Protocol (Optional Gateways for BacNET, LonWorks, and CANbus) |
| Ethernet Port             | RJ45 port capable of transmitting data 10/100Mbps                    |
| Additional Ports          | 2.0 USB Port; Micro-SD Port  |

### Motor Data

|                        |   |
|------------------------|---|
| Power Supply           | 208-230-3 or 460-3 or 575-3                           |
| Motor Enclosure        | Totally Enclosed Fan Cooled (TEFC)                    |
| Motor Efficiency       | Nema Premium Efficiency (IE3) - Meets NEMA 12-12 Rule |
| Enclosure Construction | Rolled Steel / Cast Iron                              |
| Motor Protection Index | IP54  |
| Insulation Class       | F   |

Approval Stamp

## CO-2 HELIX V50-04-1/5/VCE



Special Note: All weights and dimensions are approximate and should not be used as exact rough-in dimensions

### Dimensions and Weights

| Model                     | Voltage (V)   | Dimensions-inches |        |        |                   | System Header Size | Suction / Discharge Pump Size (300 Class ANSI) | Gauge Tap Size | Transducer Tap Size   | Hydronumatic Tank Valve on Manifold (Plugged) | Individual Pump Weight | Package Weight |
|---------------------------|---------------|-------------------|--------|--------|-------------------|--------------------|--|----------------|-----------------------|---|------------------------|----------------|
|                           |               | H (in)            | W (in) | L (in) | Pump Weight (lbs) |                    |  |                |                       |   | Package Weight (lbs)   |                |
| CO-2 HELIX V50-04-1/5/VCE | 208-230/460 V | 73-7/8            | 24-3/8 | 40-3/8 | 3" MNPT           | 2"                 | 1/4" FNPT                                      | 1/4" FNPT      | 3/4" MNPT x 3/4" FNPT | 133   | 592                    |                |
|                           | 575 V         | 73-7/8            | 36     | 40-3/8 |                   |                    |  |                |                       |   |                        |                |

### TEFC Motor Data

| Model                     | P2 (HP) | Phase (-) | Voltage (V)     | FLA (per pump) (A) | Pmax (PSI) |
|---------------------------|---------|-----------|-----------------|--------------------|------------|
| CO-2 HELIX V50-04-1/5/VCE | 5       | 3         | 208-230/460/575 | 12-11.8/5.9/4.7    | 232        |

WILO USA LLC +1 262 204-6600  
www.wilo-usa.com  
info@wilo-usa.com

WILO Canada Inc. +1 403 276-9456  
www.wilo-canada.com  
info@wilo-canada.com

# Submittal Data Sheet

Wilo CO-Helix - NSF 61/372 Pressure Boosting System



# Submittal Data Sheet

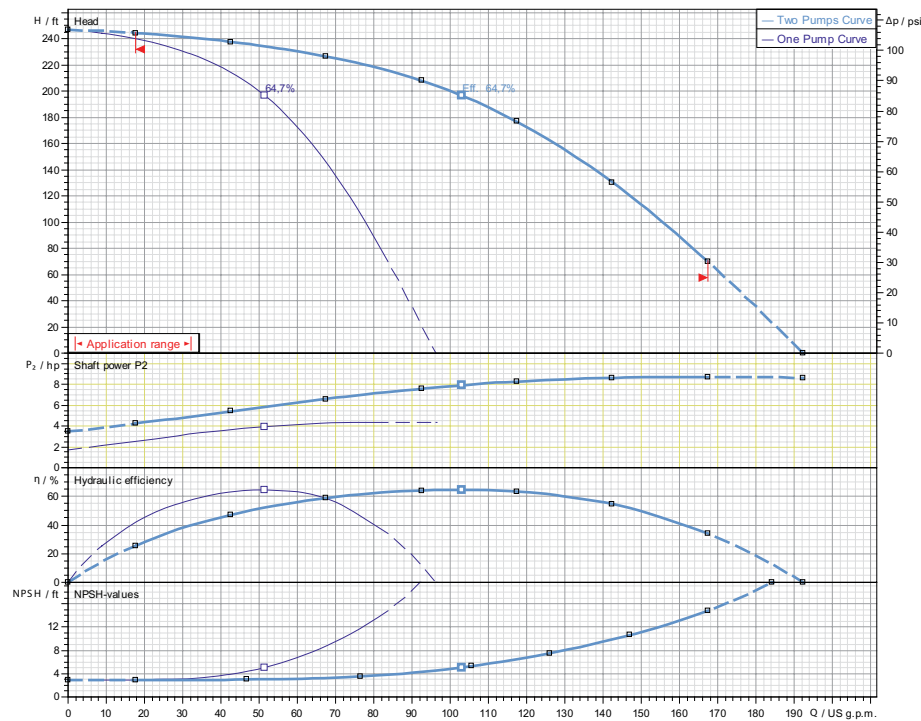
Wilo CO-Helix - NSF 61/372 Pressure Boosting System



## CO-2 HELIX V50-05-1/5/VCE

|  |               |       |
|--|---------------|-------|
|  | Project:      |       |
|  | Engineer:     |       |
|  | Contractor:   |       |
|  | Submitted By: | Date: |
|  | Approved By:  | Date: |

| Tag # | Model #                   | Flow | BOOST PSI | Min. Inlet PSI | HP/Pump | Phase | Voltage | RPM  |
|-------|---------------------------|------|-----------|----------------|---------|-------|---------|------|
|       | CO-2 HELIX V50-05-1/5/VCE |      |           |                | 5       |       |         | 3600 |



### Applications

- Water Supply
- Agriculture
- Washing /Sprinkling Systems
- Pressure Boosting
- Cooling Circuits
- Condensate Return

### Materials of Construction

|                      |   |
|----------------------|---|
| Pump Volute          | AISI304 stainless steel with ANSI flanges   |
| Impeller             | 3D Laser welded AISI 304 Stainless Steel  |
| Shaft                | AISI304, AISI318 LN, or AISI431 Stainless Steel   |
| Elastomers           | EPDM  |
| Isolation Valves     | 304 Stainless Steel Ball Valves   |
| Check Valves         | Wafer Style, 316 Stainless Steel internals, Non-slam, Plunger-type with EPDM seal/ Cast Iron Body |
| Mechanical Seal      | Cartridge Seal: Sleeve AISI316L / Spring Clips AISI304  |
| Pressure Transducers | 316 Stainless Steel   |
| Pressure Gauges      | 304 Stainless Steel Housing with 316 Stainless Steel wetted parts                                 |
| System base          | Steel (S235JR)  |
| Vibration Isolators  | Neoprene, Height Adjustable   |

### Technical Data - Operational Ranges

|                     |  |
|---------------------|--|
| Liquid Temp Range   | -4°F to +180°F (Min. 32 °F for Domestic Water) |
| Ambient Temp Range  | +32°F to +104 °F                               |
| Max Inlet Pressure  | 145 PSI  |
| Max System Pressure | 232 PSI  |

### Technical Data - Panel

|                           |  |
|---------------------------|--|
| Power Supply              | 208-230/460-3 or 575-3   |
| Enclosure                 | NEMA 12 (3R Available Upon Request)  |
| Standard                  | Meets UL 508A  |
| Variable Frequency Drives | Danfoss FC-51 (1-10 HP for 208-23/460v-3)<br>Danfoss FC-101 (1-10 HP for 575v-3) |

### Technical Data - PLC

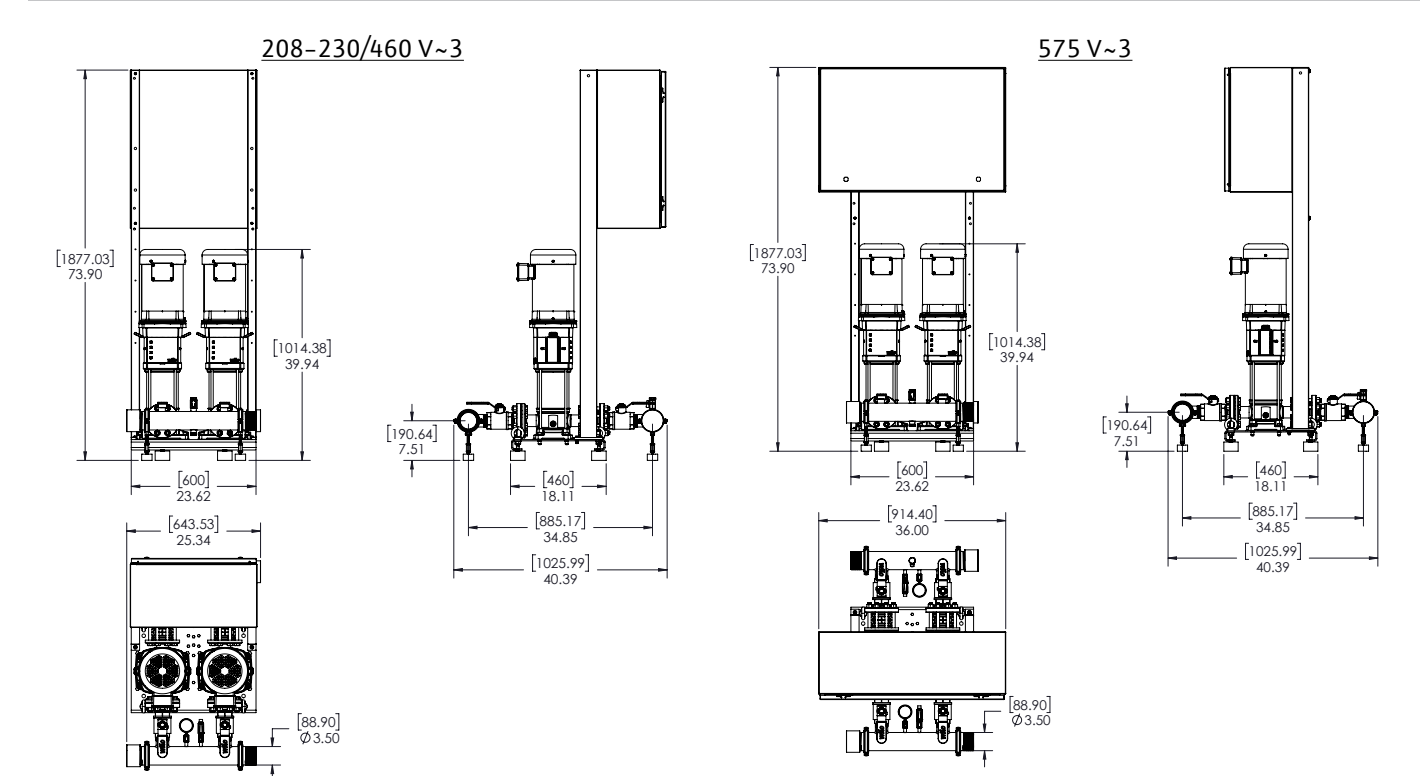
|                           |  |
|---------------------------|--|
| User Interface            | 7" Diagonal Color LCD Touchscreen                                    |
| Display Resolution        | 800 x 480 Pixels   |
| Supply Voltage            | 24VDC  |
| Max. Current Consumption  | 320mA@24V  |
| Number of Analog Inputs   | 9  |
| Number of Analog Outputs  | 2  |
| Number of Digital Inputs  | 18   |
| Number of Digital Outputs | 17   |
| Onboard Communications    | Modbus Protocol (Optional Gateways for BacNET, LonWorks, and CANbus) |
| Ethernet Port             | RJ45 port capable of transmitting data 10/100Mbps                    |
| Additional Ports          | 2.0 USB Port; Micro-SD Port  |

### Motor Data

|                        |   |
|------------------------|---|
| Power Supply           | 208-230-3 or 460-3 or 575-3                           |
| Motor Enclosure        | Totally Enclosed Fan Cooled (TEFC)                    |
| Motor Efficiency       | Nema Premium Efficiency (IE3) - Meets NEMA 12-12 Rule |
| Enclosure Construction | Rolled Steel / Cast Iron                              |
| Motor Protection Index | IP54  |
| Insulation Class       | F   |

Approval Stamp

## CO-2 HELIX V50-05-1/5/VCE



Special Note: All weights and dimensions are approximate and should not be used as exact rough-in dimensions

### Dimensions and Weights

| Model                     | Voltage (V)   | Dimensions-inches |        |        |                    |  |                |                     |   | Individual Pump Weight | Package Weight |
|---------------------------|---------------|-------------------|--------|--------|--------------------|--|----------------|---------------------|---|------------------------|----------------|
|                           |               | H (in)            | W (in) | L (in) | System Header Size | Suction / Discharge Pump Size (300 Class ANSI) | Gauge Tap Size | Transducer Tap Size | Hydrunumatic Tank Valve on Manifold (Plugged) |                        |                |
| CO-2 HELIX V50-05-1/5/VCE | 208-230/460 V | 73-7/8            | 24-3/8 | 40-3/8 | 3" MNPT            | 2"   | 1/4" FNPT      | 1/4" FNPT           | 3/4" MNPT x 3/4" FNPT                         | 142                    | 610            |
|                           | 575 V         | 73-7/8            | 36     | 40-3/8 | 3" MNPT            | 2"   | 1/4" FNPT      | 1/4" FNPT           | 3/4" MNPT x 3/4" FNPT                         | 142                    | 610            |

### TEFC Motor Data

| Model                     | P2 (HP) | Phase (-) | Voltage (V)     | FLA (per pump) (A) | Pmax (PSI) |
|---------------------------|---------|-----------|-----------------|--------------------|------------|
| CO-2 HELIX V50-05-1/5/VCE | 5       | 3         | 208-230/460/575 | 12-11.8/5.9/4.7    | 232        |

# Submittal Data Sheet

Wilo CO-Helix - NSF 61/372 Pressure Boosting System



# Submittal Data Sheet

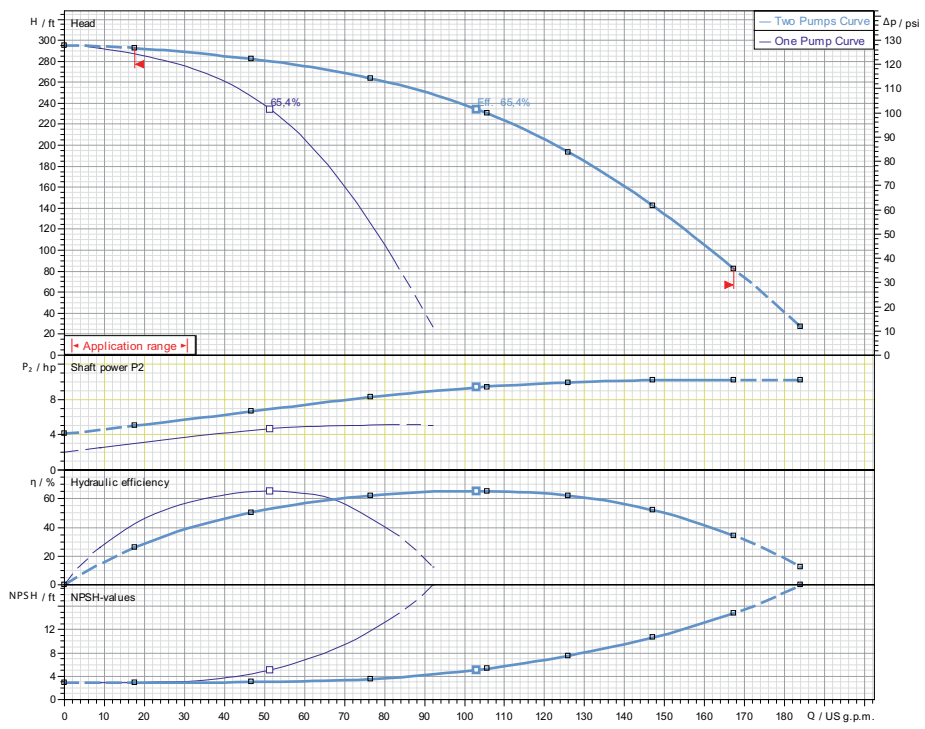
Wilo CO-Helix - NSF 61/372 Pressure Boosting System



## CO-2 HELIX V50-06-1/5/VCE

|  |               |       |
|--|---------------|-------|
|  | Project:      |       |
|  | Engineer:     |       |
|  | Contractor:   |       |
|  | Submitted By: | Date: |
|  | Approved By:  | Date: |

| Tag # | Model #                   | Flow | BOOST PSI | Min. Inlet PSI | HP/Pump | Phase | Voltage | RPM  |
|-------|---------------------------|------|-----------|----------------|---------|-------|---------|------|
|       | CO-2 HELIX V50-06-1/5/VCE |      |           |                | 5       |       |         | 3600 |



- ### Applications
- Water Supply
  - Agriculture
  - Washing / Sprinkling Systems
  - Pressure Boosting
  - Cooling Circuits
  - Condensate Return

### Materials of Construction

|                      |   |
|----------------------|---|
| Pump Volute          | AISI304 stainless steel with ANSI flanges   |
| Impeller             | 3D Laser welded AISI 304 Stainless Steel  |
| Shaft                | AISI304, AISI318 LN, or AISI431 Stainless Steel   |
| Elastomers           | EPDM  |
| Isolation Valves     | 304 Stainless Steel Ball Valves   |
| Check Valves         | Wafer Style, 316 Stainless Steel internals, Non-slam, Plunger-type with EPDM seal/ Cast Iron Body |
| Mechanical Seal      | Cartridge Seal: Sleeve AISI316L / Spring Clips AISI304  |
| Pressure Transducers | 316 Stainless Steel   |
| Pressure Gauges      | 304 Stainless Steel Housing with 316 Stainless Steel wetted parts                                 |
| System base          | Steel (S235JR)  |
| Vibration Isolators  | Neoprene, Height Adjustable   |

### Technical Data - Operational Ranges

|                     |  |
|---------------------|--|
| Liquid Temp Range   | -4°F to +180°F (Min. 32 °F for Domestic Water) |
| Ambient Temp Range  | +32°F to +104 °F                               |
| Max Inlet Pressure  | 145 PSI  |
| Max System Pressure | 232 PSI  |

### Technical Data - Panel

|                           |  |
|---------------------------|--|
| Power Supply              | 208-230/460-3 or 575-3   |
| Enclosure                 | NEMA 12 (3R Available Upon Request)  |
| Standard                  | Meets UL 508A  |
| Variable Frequency Drives | Danfoss FC-51 (1-10 HP for 208-23/460v-3)<br>Danfoss FC-101 (1-10 HP for 575v-3) |

### Technical Data - PLC

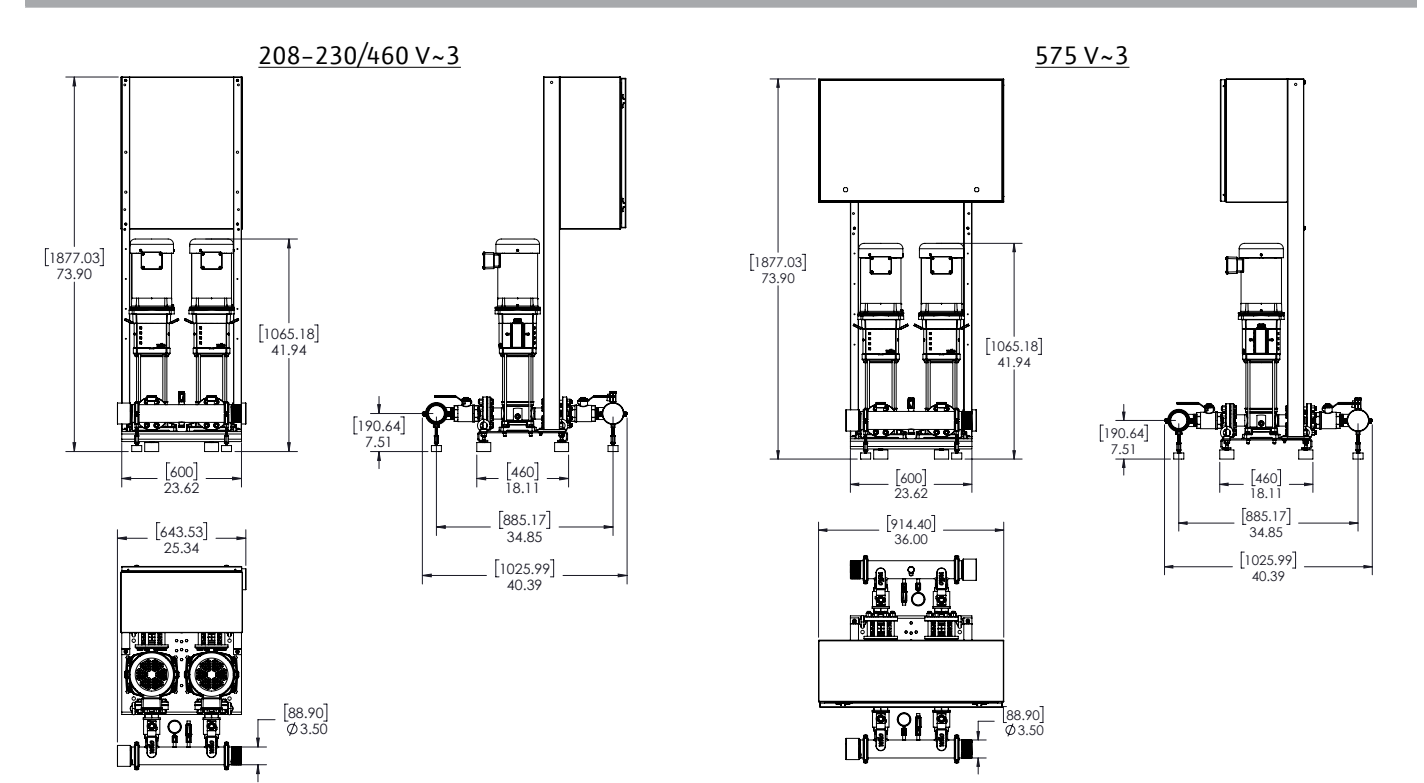
|                           |  |
|---------------------------|--|
| User Interface            | 7" Diagonal Color LCD Touchscreen                                    |
| Display Resolution        | 800 x 480 Pixels   |
| Supply Voltage            | 24VDC  |
| Max. Current Consumption  | 320mA@24V  |
| Number of Analog Inputs   | 9  |
| Number of Analog Outputs  | 2  |
| Number of Digital Inputs  | 18   |
| Number of Digital Outputs | 17   |
| Onboard Communications    | Modbus Protocol (Optional Gateways for BacNET, LonWorks, and CANbus) |
| Ethernet Port             | RJ45 port capable of transmitting data 10/100Mbps                    |
| Additional Ports          | 2.0 USB Port; Micro-SD Port  |

### Motor Data

|                        |   |
|------------------------|---|
| Power Supply           | 208-230-3 or 460-3 or 575-3                           |
| Motor Enclosure        | Totally Enclosed Fan Cooled (TEFC)                    |
| Motor Efficiency       | Nema Premium Efficiency (IE3) - Meets NEMA 12-12 Rule |
| Enclosure Construction | Rolled Steel / Cast Iron                              |
| Motor Protection Index | IP54  |
| Insulation Class       | F   |

Approval Stamp

## CO-2 HELIX V50-06-1/5/VCE



### Dimensions and Weights

| Model                     | Voltage (V)   | Dimensions-inches |        |        |                    |  |                |                     | Individual Pump Weight | Package Weight |   |
|---------------------------|---------------|-------------------|--------|--------|--------------------|--|----------------|---------------------|------------------------|----------------|---|
|                           |               | H (in)            | W (in) | L (in) | System Header Size | Suction / Discharge Pump Size (300 Class ANSI) | Gauge Tap Size | Transducer Tap Size |                        |                | Hydronumatic Tank Valve on Manifold (Plugged) |
| CO-2 HELIX V50-06-1/5/VCE | 208-230/460 V | 73-7/8            | 24-3/8 | 40-3/8 | 3" MNPT            | 2"   | 1/4" FNPT      | 1/4" FNPT           | 3/4" MNPT x 3/4" FNPT  | 144            | 614   |
|                           | 575 V         | 73-7/8            | 36     | 40-3/8 |                    |  |                |                     |                        |                |   |

### TEFC Motor Data

| Model                     | P2 (HP) | Phase (-) | Voltage (V)     | FLA (per pump) (A) | Pmax (PSI) |
|---------------------------|---------|-----------|-----------------|--------------------|------------|
| CO-2 HELIX V50-06-1/5/VCE | 5       | 3         | 208-230/460/575 | 12-11.8/5.9/4.7    | 232        |

# Submittal Data Sheet

Wilo CO-Helix - NSF 61/372 Pressure Boosting System



# Submittal Data Sheet

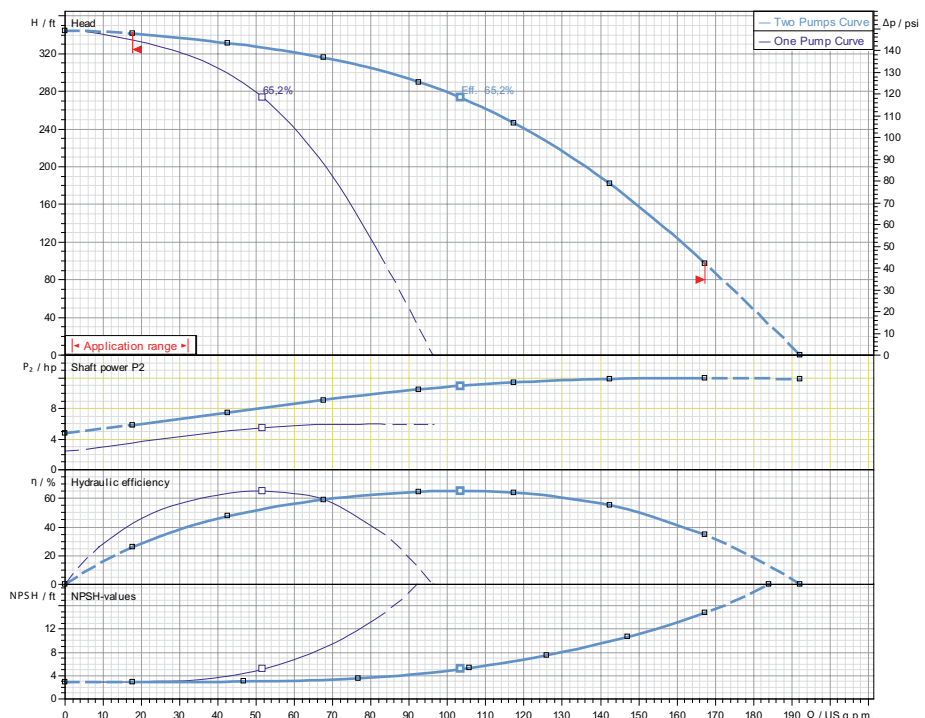
Wilo CO-Helix - NSF 61/372 Pressure Boosting System



## CO-2 HELIX V50-07-1/7.5/VCE

|  |               |       |
|--|---------------|-------|
|  | Project:      |       |
|  | Engineer:     |       |
|  | Contractor:   |       |
|  | Submitted By: | Date: |
|  | Approved By:  | Date: |

| Tag # | Model #                     | Flow | BOOST PSI | Min. Inlet PSI | HP/Pump | Phase | Voltage | RPM  |
|-------|-----------------------------|------|-----------|----------------|---------|-------|---------|------|
|       | CO-2 HELIX V50-07-1/7.5/VCE |      |           |                | 7.5     |       |         | 3600 |



- ### Applications
- Water Supply
  - Pressure Boosting
  - Agriculture
  - Cooling Circuits
  - Washing /Sprinkling Systems
  - Condensate Return

### Materials of Construction

|                      |   |
|----------------------|---|
| Pump Volute          | AISI304 stainless steel with ANSI flanges   |
| Impeller             | 3D Laser welded AISI 304 Stainless Steel  |
| Shaft                | AISI304, AISI318 LN, or AISI431 Stainless Steel   |
| Elastomers           | EPDM  |
| Isolation Valves     | 304 Stainless Steel Ball Valves   |
| Check Valves         | Wafer Style, 316 Stainless Steel internals. Non-slam, Plunger-type with EPDM seal/ Cast Iron Body |
| Mechanical Seal      | Cartridge Seal: Sleeve AISI316L / Spring Clips AISI304  |
| Pressure Transducers | 316 Stainless Steel   |
| Pressure Gauges      | 304 Stainless Steel Housing with 316 Stainless Steel wetted parts                                 |
| System base          | Steel (S235JR)  |
| Vibration Isolators  | Neoprene, Height Adjustable   |

### Technical Data - Operational Ranges

|                     |  |
|---------------------|--|
| Liquid Temp Range   | -4°F to +248°F (Min. 32 °F for Domestic Water) |
| Ambient Temp Range  | +32°F to +104 °F                               |
| Max Inlet Pressure  | 145 PSI  |
| Max System Pressure | 200 PSI  |

### Technical Data - Panel

|                           |  |
|---------------------------|--|
| Power Supply              | 208-230/460-3 or 575-3   |
| Enclosure                 | NEMA 12 (3R Available Upon Request)  |
| Standard                  | Meets UL 508A  |
| Variable Frequency Drives | Danfoss FC-51 (1-10 HP for 208-23/460v-3)<br>Danfoss FC-101 (1-10 HP for 575v-3) |

### Technical Data - PLC

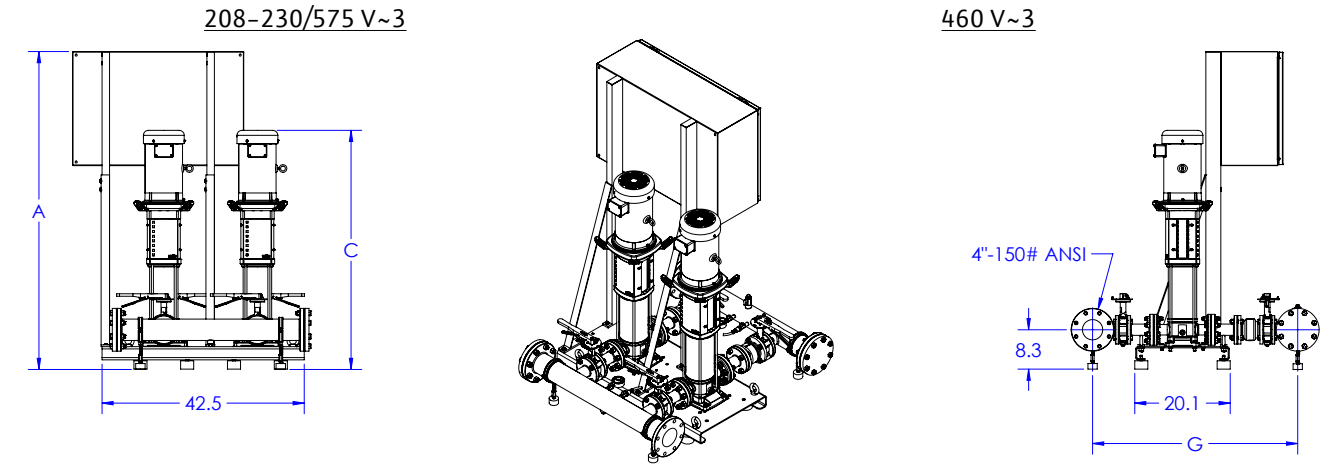
|                           |  |
|---------------------------|--|
| User Interface            | 7" Diagonal Color LCD Touchscreen                                    |
| Display Resolution        | 800 x 480 Pixels   |
| Supply Voltage            | 24VDC  |
| Max. Current Consumption  | 320mA@24V  |
| Number of Analog Inputs   | 9  |
| Number of Analog Outputs  | 2  |
| Number of Digital Inputs  | 18   |
| Number of Digital Outputs | 17   |
| Onboard Communications    | Modbus Protocol (Optional Gateways for BacNET, LonWorks, and CANbus) |
| Ethernet Port             | RJ45 port capable of transmitting data 10/100Mbps                    |
| Additional Ports          | 2.0 USB Port; Micro-SD Port  |

### Motor Data

|                        |   |
|------------------------|---|
| Power Supply           | 208-230-3 or 460-3 or 575-3                           |
| Motor Enclosure        | Totally Enclosed Fan Cooled (TEFC)                    |
| Motor Efficiency       | Nema Premium Efficiency (IE3) - Meets NEMA 12-12 Rule |
| Enclosure Construction | Rolled Steel / Cast Iron                              |
| Motor Protection Index | IP54  |
| Insulation Class       | F   |

Approval Stamp

## CO-2 HELIX V50-07-1/7.5/VCE



Units: inches

| CO-2 HELIX                  | 208/230V ~1IN~3OUT |      |      |      |      | 208/230V ~3 |      |      |      |      | 460V ~3 |      |      |      |      | 575 ~3 |      |     |      |      |      |      |      |     |
|-----------------------------|--------------------|------|------|------|------|-------------|------|------|------|------|---------|------|------|------|------|--------|------|-----|------|------|------|------|------|-----|
|                             | A                  | C    | G    | H    | I    | A           | C    | G    | H    | I    | A       | C    | G    | H    | I    | A      | C    | G   | H    | I    |      |      |      |     |
| CO-2 HELIX V50-07-1/7.5/VCE | 74.7               | 50.2 | 43.1 | 50.1 | 52.1 | 963         | 64.8 | 50.2 | 43.1 | 50.1 | 52.1    | 951  | 66.9 | 50.2 | 43.1 | 43.9   | 52.1 | 895 | 64.8 | 50.2 | 42.9 | 44.1 | 51.9 | 911 |
| CO-2 HELIX V50-08-1/7.5/VCE | 74.7               | 51.2 | 43.1 | 50.1 | 52.1 | 1035        | 64.8 | 51.2 | 43.1 | 50.1 | 52.1    | 955  | 66.9 | 51.2 | 43.1 | 43.9   | 52.1 | 899 | 64.8 | 51.2 | 42.9 | 44.1 | 51.9 | 915 |
| CO-2 HELIX V50-09-1/7.5/VCE | 74.7               | 53.2 | 43.1 | 50.1 | 52.1 | 1043        | 64.8 | 53.2 | 43.1 | 50.1 | 52.1    | 963  | 66.9 | 53.2 | 43.1 | 43.9   | 52.1 | 907 | 64.8 | 53.2 | 42.9 | 44.1 | 51.9 | 923 |
| CO-2 HELIX V50-10-1/10/VCE  | -                  | -    | -    | -    | -    | -           | 64.8 | 54.2 | 40.6 | 50.1 | 49.6    | 1012 | 66.9 | 54.2 | 40.6 | 43.9   | 49.6 | 956 | 64.8 | 54.2 | 40.6 | 44.1 | 49.6 | 972 |
| CO-2 HELIX V50-11-1/10/VCE  | -                  | -    | -    | -    | -    | -           | 64.8 | 57.2 | 40.6 | 50.1 | 49.6    | 1022 | 66.9 | 57.2 | 40.6 | 43.9   | 49.6 | 966 | 64.8 | 57.2 | 40.6 | 44.1 | 49.6 | 982 |

Special Note: All weights and dimensions are approximate and should not be used as exact rough-in dimensions

### Dimensions and Weights

| Model                       | Voltage (V)   | H (in) | W (in) | L (in) | System Header Size | Suction / Discharge Pump Size (300 Class ANSI) |           |           |                       | Gauge Tap Size | Transducer Tap Size | Hydronumatic Tank Valve on Manifold (Plugged) | Individual Pump Weight (lbs) | Package Weight (lbs) |
|-----------------------------|---------------|--------|--------|--------|--------------------|--|-----------|-----------|-----------------------|----------------|---------------------|---|------------------------------|----------------------|
|                             |               |        |        |        |                    | A  | C         | G         | H                     |                |                     |   |                              |                      |
| CO-2 HELIX V50-07-1/7.5/VCE | 208-230/575 V | 66-4/5 | 50-5/9 | 53-1/7 | 4"-150# ANSI       | 2"   | 1/4" FNPT | 1/4" FNPT | 3/4" MNPT x 3/4" FNPT | 199            | 1017                |   |                              |                      |
|                             | 460 V         | 66-4/5 | 44-5/9 | 53-1/7 |                    | 2"   | 1/4" FNPT | 1/4" FNPT | 3/4" MNPT x 3/4" FNPT | 199            | 974                 |   |                              |                      |

### TEFC Motor Data

| Model                       | P2 (HP) | Phase (-) | Voltage (V)     | FLA (per pump) (A) | Pmax (PSI) |
|-----------------------------|---------|-----------|-----------------|--------------------|------------|
| CO-2 HELIX V50-07-1/7.5/VCE | 7.5     | 3         | 208-230/460/575 | 17.2-16.2/8.1/6.8  | 200        |

WILO USA LLC +1 262 204-6600  
www.wilo-usa.com  
info@wilo-usa.com

WILO Canada Inc. +1 403 276-9456  
www.wilo-canada.com  
info@wilo-canada.com

# Submittal Data Sheet

Wilo CO-Helix - NSF 61/372 Pressure Boosting System



# Submittal Data Sheet

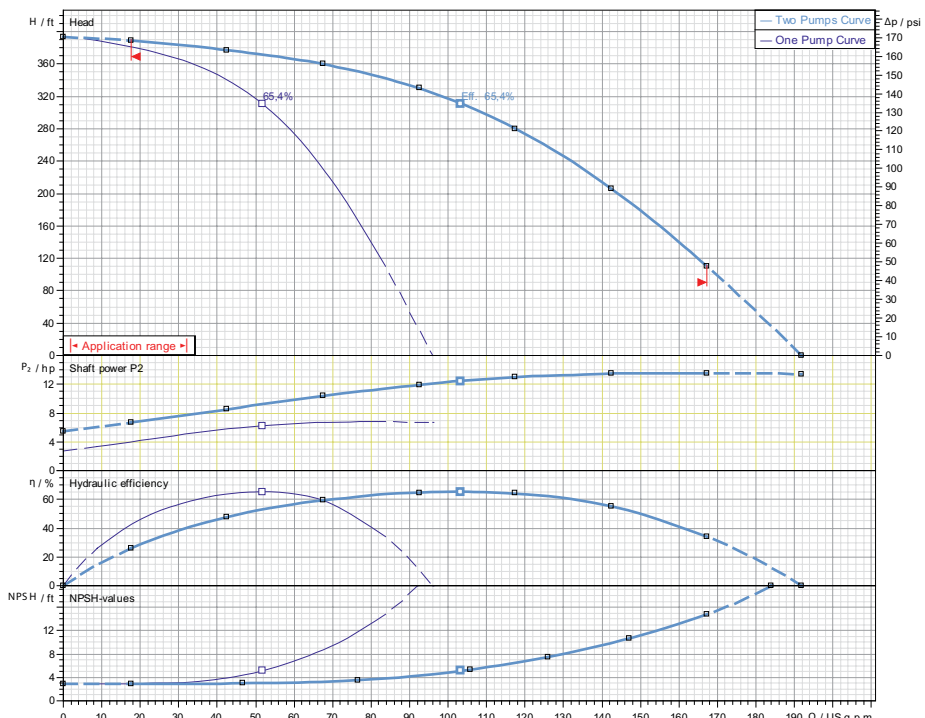
Wilo CO-Helix - NSF 61/372 Pressure Boosting System



## CO-2 HELIX V50-08-1/7.5/VCE

|  |               |       |
|--|---------------|-------|
|  | Project:      |       |
|  | Engineer:     |       |
|  | Contractor:   |       |
|  | Submitted By: | Date: |
|  | Approved By:  | Date: |

| Tag # | Model #                     | Flow | BOOST PSI | Min. Inlet PSI | HP/Pump | Phase | Voltage | RPM  |
|-------|-----------------------------|------|-----------|----------------|---------|-------|---------|------|
|       | CO-2 HELIX V50-08-1/7.5/VCE |      |           |                |         |       |         | 3600 |



- ### Applications
- Water Supply
  - Agriculture
  - Washing / Sprinkling Systems
  - Pressure Boosting
  - Cooling Circuits
  - Condensate Return

### Materials of Construction

|                      |   |
|----------------------|---|
| Pump Volute          | AISI304 stainless steel with ANSI flanges   |
| Impeller             | 3D Laser welded AISI 304 Stainless Steel  |
| Shaft                | AISI304, AISI318 LN, or AISI431 Stainless Steel   |
| Elastomers           | EPDM  |
| Isolation Valves     | 304 Stainless Steel Ball Valves   |
| Check Valves         | Wafer Style, 316 Stainless Steel internals. Non-slam, Plunger-type with EPDM seal/ Cast Iron Body |
| Mechanical Seal      | Cartridge Seal: Sleeve AISI316L / Spring Clips AISI304  |
| Pressure Transducers | 316 Stainless Steel   |
| Pressure Gauges      | 304 Stainless Steel Housing with 316 Stainless Steel wetted parts                                 |
| System base          | Steel (S235JR)  |
| Vibration Isolators  | Neoprene, Height Adjustable   |

### Technical Data - Operational Ranges

|                     |  |
|---------------------|--|
| Liquid Temp Range   | -4°F to +248°F (Min. 32 °F for Domestic Water) |
| Ambient Temp Range  | +32°F to +104 °F                               |
| Max Inlet Pressure  | 145 PSI  |
| Max System Pressure | 200 PSI  |

### Technical Data - Panel

|                           |  |
|---------------------------|--|
| Power Supply              | 208-230/460-3 or 575-3   |
| Enclosure                 | NEMA 12 (3R Available Upon Request)  |
| Standard                  | Meets UL 508A  |
| Variable Frequency Drives | Danfoss FC-51 (1-10 HP for 208-23/460v-3)<br>Danfoss FC-101 (1-10 HP for 575v-3) |

### Technical Data - PLC

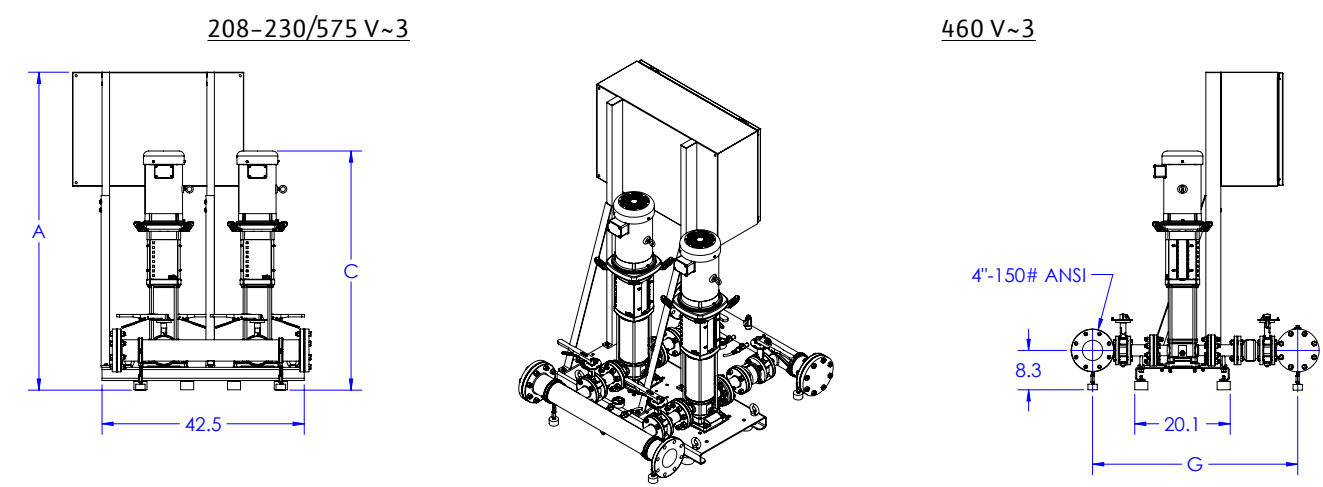
|                           |  |
|---------------------------|--|
| User Interface            | 7" Diagonal Color LCD Touchscreen                                    |
| Display Resolution        | 800 x 480 Pixels   |
| Supply Voltage            | 24VDC  |
| Max. Current Consumption  | 320mA@24V  |
| Number of Analog Inputs   | 9  |
| Number of Analog Outputs  | 2  |
| Number of Digital Inputs  | 18   |
| Number of Digital Outputs | 17   |
| Onboard Communications    | Modbus Protocol (Optional Gateways for BacNET, LonWorks, and CANbus) |
| Ethernet Port             | RJ45 port capable of transmitting data 10/100Mbps                    |
| Additional Ports          | 2.0 USB Port; Micro-SD Port  |

### Motor Data

|                        |   |
|------------------------|---|
| Power Supply           | 208-230-3 or 460-3 or 575-3                           |
| Motor Enclosure        | Totally Enclosed Fan Cooled (TEFC)                    |
| Motor Efficiency       | Nema Premium Efficiency (IE3) - Meets NEMA 12-12 Rule |
| Enclosure Construction | Rolled Steel / Cast Iron                              |
| Motor Protection Index | IP54  |
| Insulation Class       | F   |

Approval Stamp

## CO-2 HELIX V50-08-1/7.5/VCE



Units: inches

| CO-2 HELIX                  | 208/230V ~1IN~3OUT |      |      |      |      | 208/230V ~3 |      |      |      |      | 460V ~3 |      |      |      |      | 575 ~3 |      |     |      |      |      |      |      |     |
|-----------------------------|--------------------|------|------|------|------|-------------|------|------|------|------|---------|------|------|------|------|--------|------|-----|------|------|------|------|------|-----|
|                             | A                  | C    | G    | H    | I    | A           | C    | G    | H    | I    | A       | C    | G    | H    | I    | A      | C    | G   | H    | I    |      |      |      |     |
| CO-2 HELIX V50-07-1/7.5/VCE | 74.7               | 50.2 | 43.1 | 50.1 | 52.1 | 963         | 64.8 | 51.2 | 43.1 | 50.1 | 52.1    | 1035 | 66.9 | 51.2 | 43.1 | 43.9   | 52.1 | 899 | 64.8 | 51.2 | 42.9 | 44.1 | 51.9 | 915 |
| CO-2 HELIX V50-08-1/7.5/VCE | 74.7               | 51.2 | 43.1 | 50.1 | 52.1 | 1035        | 64.8 | 51.2 | 43.1 | 50.1 | 52.1    | 955  | 66.9 | 51.2 | 43.1 | 43.9   | 52.1 | 899 | 64.8 | 51.2 | 42.9 | 44.1 | 51.9 | 915 |
| CO-2 HELIX V50-09-1/7.5/VCE | 74.7               | 53.2 | 43.1 | 50.1 | 52.1 | 1043        | 64.8 | 53.2 | 43.1 | 50.1 | 52.1    | 963  | 66.9 | 53.2 | 43.1 | 43.9   | 52.1 | 907 | 64.8 | 53.2 | 42.9 | 44.1 | 51.9 | 923 |
| CO-2 HELIX V50-10-1/10/VCE  | -                  | -    | -    | -    | -    | -           | 64.8 | 54.2 | 40.6 | 50.1 | 49.6    | 1012 | 66.9 | 54.2 | 40.6 | 43.9   | 49.6 | 956 | 64.8 | 54.2 | 40.6 | 44.1 | 49.6 | 972 |
| CO-2 HELIX V50-11-1/10/VCE  | -                  | -    | -    | -    | -    | -           | 64.8 | 57.2 | 40.6 | 50.1 | 49.6    | 1022 | 66.9 | 57.2 | 40.6 | 43.9   | 49.6 | 966 | 64.8 | 57.2 | 40.6 | 44.1 | 49.6 | 982 |

Special Note: All weights and dimensions are approximate and should not be used as exact rough-in dimensions

### Dimensions and Weights

| Model                       | Voltage (V)   | Dimensions-inches |        |        |                   |                      | System Header Size | Suction / Discharge Pump Size (300 Class ANSI) | Gauge Tap Size        | Transducer Tap Size | Hydrumatic Tank Valve on Manifold (Plugged) | Individual Pump Weight | Package Weight |
|-----------------------------|---------------|-------------------|--------|--------|-------------------|----------------------|--------------------|--|-----------------------|---------------------|---|------------------------|----------------|
|                             |               | H (in)            | W (in) | L (in) | Pump Weight (lbs) | Package Weight (lbs) |                    |  |                       |                     |   |                        |                |
| CO-2 HELIX V50-08-1/7.5/VCE | 208-230/575 V | 66-4/5            | 50-5/9 | 53-1/7 | 4"-150# ANSI      | 2"                   | 1/4" FNPT          | 1/4" FNPT                                      | 3/4" MNPT x 3/4" FNPT | 223                 | 1021  |                        |                |
|                             | 460 V         | 66-4/5            | 44-5/9 | 53-1/7 | 4"-150# ANSI      | 2"                   | 1/4" FNPT          | 1/4" FNPT                                      | 3/4" MNPT x 3/4" FNPT | 223                 | 978   |                        |                |

### TEFC Motor Data

| Model                       | P2 (HP) | Phase (-) | Voltage (V)     | FLA (per pump) (A) | Pmax (PSI) |
|-----------------------------|---------|-----------|-----------------|--------------------|------------|
| CO-2 HELIX V50-08-1/7.5/VCE | 7.5     | 3         | 208-230/460/575 | 17.2-16.2/8.1/6.8  | 200        |

WILO USA LLC +1 262 204-6600  
www.wilo-usa.com  
info@wilo-usa.com

WILO Canada Inc. +1 403 276-9456  
www.wilo-canada.com  
info@wilo-canada.com



# Submittal Data Sheet

Wilo CO-Helix - NSF 61/372 Pressure Boosting System



# Submittal Data Sheet

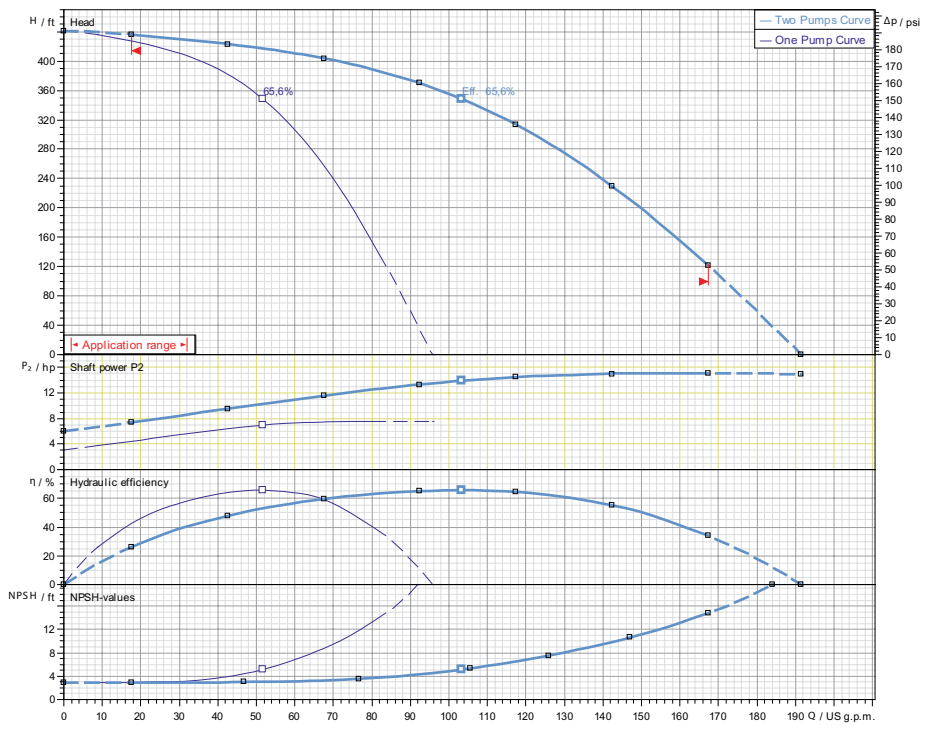
Wilo CO-Helix - NSF 61/372 Pressure Boosting System



## CO-2 HELIX V50-09-1/7.5/VCE

|  |               |       |
|--|---------------|-------|
|  | Project:      |       |
|  | Engineer:     |       |
|  | Contractor:   |       |
|  | Submitted By: | Date: |
|  | Approved By:  | Date: |

| Tag # | Model #                     | Flow | BOOST PSI | Min. Inlet PSI | HP/Pump | Phase | Voltage | RPM  |
|-------|-----------------------------|------|-----------|----------------|---------|-------|---------|------|
|       | CO-2 HELIX V50-09-1/7.5/VCE |      |           |                | 7.5     |       |         | 3600 |



- ### Applications
- Water Supply
  - Agriculture
  - Washing / Sprinkling Systems
  - Pressure Boosting
  - Cooling Circuits
  - Condensate Return

### Materials of Construction

|                      |   |
|----------------------|---|
| Pump Volute          | AISI304 stainless steel with ANSI flanges   |
| Impeller             | 3D Laser welded AISI 304 Stainless Steel  |
| Shaft                | AISI304, AISI318 LN, or AISI431 Stainless Steel   |
| Elastomers           | EPDM  |
| Isolation Valves     | 304 Stainless Steel Ball Valves   |
| Check Valves         | Wafer Style, 316 Stainless Steel internals, Non-slam, Plunger-type with EPDM seal/ Cast Iron Body |
| Mechanical Seal      | Cartridge Seal: Sleeve AISI316L / Spring Clips AISI304  |
| Pressure Transducers | 316 Stainless Steel   |
| Pressure Gauges      | 304 Stainless Steel Housing with 316 Stainless Steel wetted parts                                 |
| System base          | Steel (S235JR)  |
| Vibration Isolators  | Neoprene, Height Adjustable   |

### Technical Data - Operational Ranges

|                     |  |
|---------------------|--|
| Liquid Temp Range   | -4°F to +248°F (Min. 32 °F for Domestic Water) |
| Ambient Temp Range  | +32°F to +104 °F                               |
| Max Inlet Pressure  | 145 PSI  |
| Max System Pressure | 200 PSI  |

### Technical Data - PLC

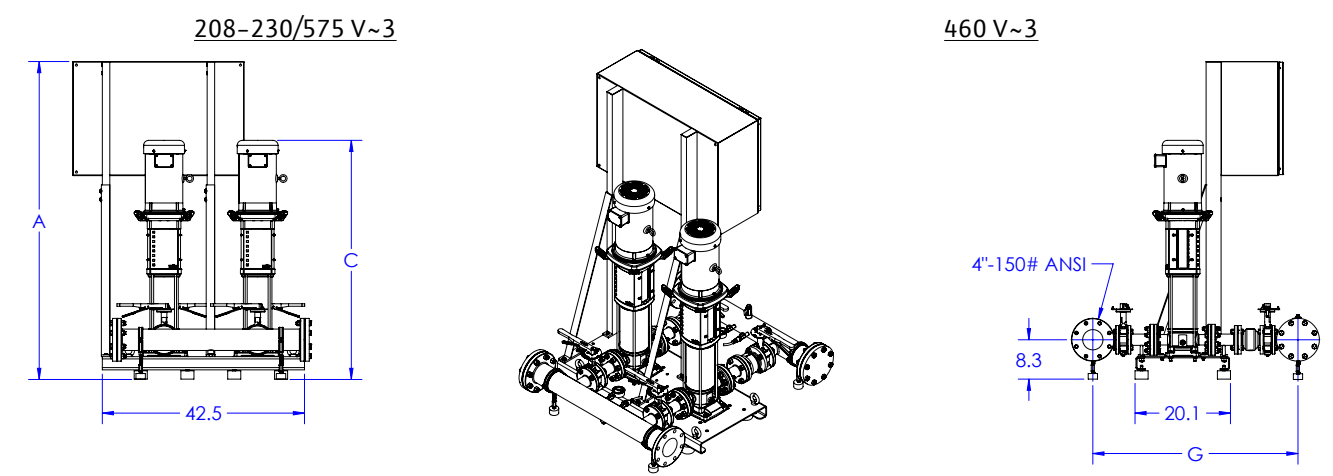
|                           |  |
|---------------------------|--|
| User Interface            | 7" Diagonal Color LCD Touchscreen                                    |
| Display Resolution        | 800 x 480 Pixels   |
| Supply Voltage            | 24VDC  |
| Max. Current Consumption  | 320mA@24V  |
| Number of Analog Inputs   | 9  |
| Number of Analog Outputs  | 2  |
| Number of Digital Inputs  | 18   |
| Number of Digital Outputs | 17   |
| Onboard Communications    | Modbus Protocol (Optional Gateways for BacNET, LonWorks, and CANbus) |
| Ethernet Port             | RJ45 port capable of transmitting data 10/100Mbps                    |
| Additional Ports          | 2.0 USB Port; Micro-SD Port  |

### Motor Data

|                        |   |
|------------------------|---|
| Power Supply           | 208-230-3 or 460-3 or 575-3                           |
| Motor Enclosure        | Totally Enclosed Fan Cooled (TEFC)                    |
| Motor Efficiency       | Nema Premium Efficiency (IE3) - Meets NEMA 12-12 Rule |
| Enclosure Construction | Rolled Steel / Cast Iron                              |
| Motor Protection Index | IP54  |
| Insulation Class       | F   |

Approval Stamp

## CO-2 HELIX V50-09-1/7.5/VCE



Units: inches

| CO-2 HELIX                  | 208/230V ~1IN~3OUT |      |      |      |      | 208/230V ~3 |      |      |      |      | 460V ~3 |      |      |      |      | 575 ~3 |      |     |      |      |      |      |      |     |
|-----------------------------|--------------------|------|------|------|------|-------------|------|------|------|------|---------|------|------|------|------|--------|------|-----|------|------|------|------|------|-----|
|                             | A                  | C    | G    | H    | I    | A           | C    | G    | H    | I    | A       | C    | G    | H    | I    | A      | C    | G   | H    | I    |      |      |      |     |
| CO-2 HELIX V50-07-1/7.5/VCE | 74.7               | 50.2 | 43.1 | 50.1 | 52.1 | 963         | 64.8 | 50.2 | 43.1 | 50.1 | 52.1    | 951  | 66.9 | 50.2 | 43.1 | 43.9   | 52.1 | 895 | 64.8 | 50.2 | 42.9 | 44.1 | 51.9 | 911 |
| CO-2 HELIX V50-08-1/7.5/VCE | 74.7               | 51.2 | 43.1 | 50.1 | 52.1 | 1035        | 64.8 | 51.2 | 43.1 | 50.1 | 52.1    | 955  | 66.9 | 51.2 | 43.1 | 43.9   | 52.1 | 899 | 64.8 | 51.2 | 42.9 | 44.1 | 51.9 | 915 |
| CO-2 HELIX V50-09-1/7.5/VCE | 74.7               | 53.2 | 43.1 | 50.1 | 52.1 | 1043        | 64.8 | 53.2 | 43.1 | 50.1 | 52.1    | 963  | 66.9 | 53.2 | 43.1 | 43.9   | 52.1 | 907 | 64.8 | 53.2 | 42.9 | 44.1 | 51.9 | 923 |
| CO-2 HELIX V50-10-1/10/VCE  | -                  | -    | -    | -    | -    | -           | 64.8 | 54.2 | 40.6 | 50.1 | 49.6    | 1012 | 66.9 | 54.2 | 40.6 | 43.9   | 49.6 | 956 | 64.8 | 54.2 | 40.6 | 44.1 | 49.6 | 972 |
| CO-2 HELIX V50-11-1/10/VCE  | -                  | -    | -    | -    | -    | -           | 64.8 | 57.2 | 40.6 | 50.1 | 49.6    | 1022 | 66.9 | 57.2 | 40.6 | 43.9   | 49.6 | 966 | 64.8 | 57.2 | 40.6 | 44.1 | 49.6 | 982 |

Special Note: All weights and dimensions are approximate and should not be used as exact rough-in dimensions

### Dimensions and Weights

| Model                       | Voltage (V)   | H (in) | W (in) | L (in) | System Header Size | Dimensions-inches |           |           |                       |     | Suction / Discharge Pump Size (300 Class ANSI) | Gauge Tap Size | Transducer Tap Size | Hydrunomatic Tank Valve on Manifold (Plugged) | Individual Pump Weight | Package Weight |
|-----------------------------|---------------|--------|--------|--------|--------------------|-------------------|-----------|-----------|-----------------------|-----|--|----------------|---------------------|---|------------------------|----------------|
|                             |               |        |        |        |                    | A                 | C         | G         | H                     | I   |  |                |                     |   |                        |                |
| CO-2 HELIX V50-09-1/7.5/VCE | 208-230/575 V | 66-4/5 | 50-5/9 | 53-1/7 | 4"-150# ANSI       | 2"                | 1/4" FNPT | 1/4" FNPT | 3/4" MNPT x 3/4" FNPT | 226 | 1029   |                |                     |   |                        |                |
|                             | 460 V         | 66-4/5 | 44-5/9 | 53-1/7 |                    | 2"                | 1/4" FNPT | 1/4" FNPT | 3/4" MNPT x 3/4" FNPT |     |  | 986            |                     |   |                        |                |

### TEFC Motor Data

| Model                       | P2 (HP) | Phase (-) | Voltage (V)     | FLA (per pump) (A) | Pmax (PSI) |
|-----------------------------|---------|-----------|-----------------|--------------------|------------|
| CO-2 HELIX V50-09-1/7.5/VCE | 7.5     | 3         | 208-230/460/575 | 17.2-16.2/8.1/6.8  | 200        |

WILO USA LLC +1 262 204-6600  
www.wilo-usa.com  
info@wilo-usa.com

WILO Canada Inc. +1 403 276-9456  
www.wilo-canada.com  
info@wilo-canada.com

# Submittal Data Sheet

Wilo CO-Helix - NSF 61/372 Pressure Boosting System




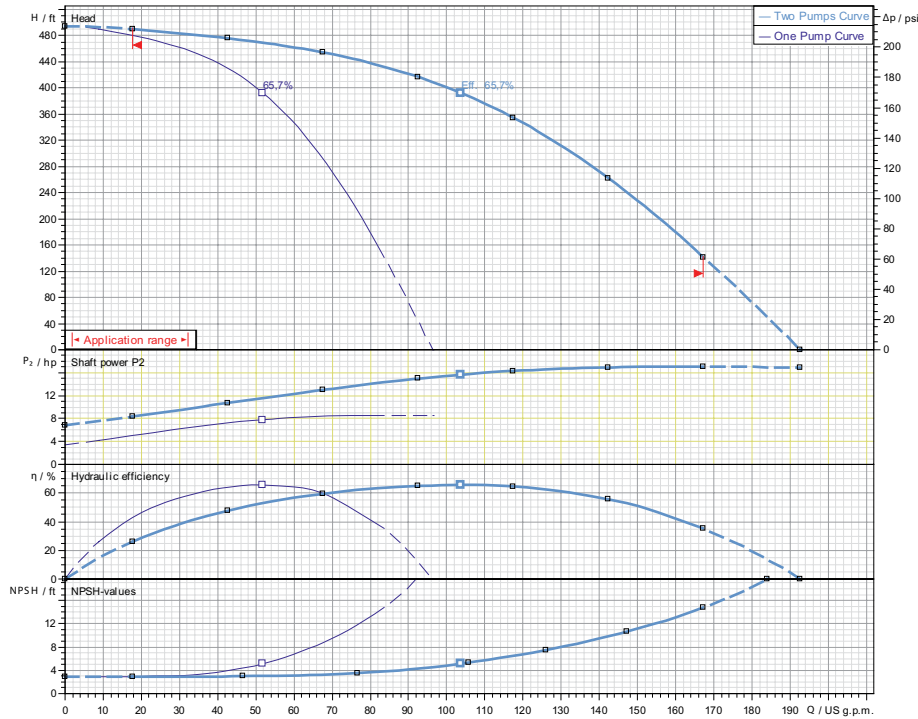
# Submittal Data Sheet

Wilo CO-Helix - NSF 61/372 Pressure Boosting System



## CO-2 HELIX V50-10-1/10/VCE

|  |                            | Project:      |           |                |         |       |         |      |
|---|----------------------------|---------------|-----------|----------------|---------|-------|---------|------|
|   |                            | Engineer:     |           |                |         |       |         |      |
|   |                            | Contractor:   |           |                |         |       |         |      |
|   |                            | Submitted By: |           |                |         | Date: |         |      |
|   |                            | Approved By:  |           |                |         | Date: |         |      |
| Tag #   | Model #                    | Flow          | BOOST PSI | Min. Inlet PSI | HP/Pump | Phase | Voltage | RPM  |
|   | CO-2 HELIX V50-10-1/10/VCE |               |           |                | 10      |       |         | 3600 |



- ### Applications
- Water Supply
  - Agriculture
  - Washing / Sprinkling Systems
  - Pressure Boosting
  - Cooling Circuits
  - Condensate Return

### Materials of Construction

|                      |   |
|----------------------|---|
| Pump Volute          | AISI304 stainless steel with ANSI flanges   |
| Impeller             | 3D Laser welded AISI 304 Stainless Steel  |
| Shaft                | AISI304, AISI318 LN, or AISI431 Stainless Steel   |
| Elastomers           | EPDM  |
| Isolation Valves     | 304 Stainless Steel Ball Valves   |
| Check Valves         | Wafer Style, 316 Stainless Steel internals. Non-slam, Plunger-type with EPDM seal/ Cast Iron Body |
| Mechanical Seal      | Cartridge Seal: Sleeve AISI316L / Spring Clips AISI304  |
| Pressure Transducers | 316 Stainless Steel   |
| Pressure Gauges      | 304 Stainless Steel Housing with 316 Stainless Steel wetted parts                                 |
| System base          | Steel (S235JR)  |
| Vibration Isolators  | Neoprene, Height Adjustable   |

### Technical Data - Operational Ranges

|                     |  |
|---------------------|--|
| Liquid Temp Range   | -4°F to +248°F (Min. 32 °F for Domestic Water) |
| Ambient Temp Range  | +32°F to +104 °F                               |
| Max Inlet Pressure  | 145 PSI  |
| Max System Pressure | 250 PSI  |

### Technical Data - Panel

|                           |  |
|---------------------------|--|
| Power Supply              | 208-230/460-3 or 575-3   |
| Enclosure                 | NEMA 12 (3R Available Upon Request)  |
| Standard                  | Meets UL 508A  |
| Variable Frequency Drives | Danfoss FC-51 (1-10 HP for 208-23/460v-3)<br>Danfoss FC-101 (1-10 HP for 575v-3) |

### Technical Data - PLC

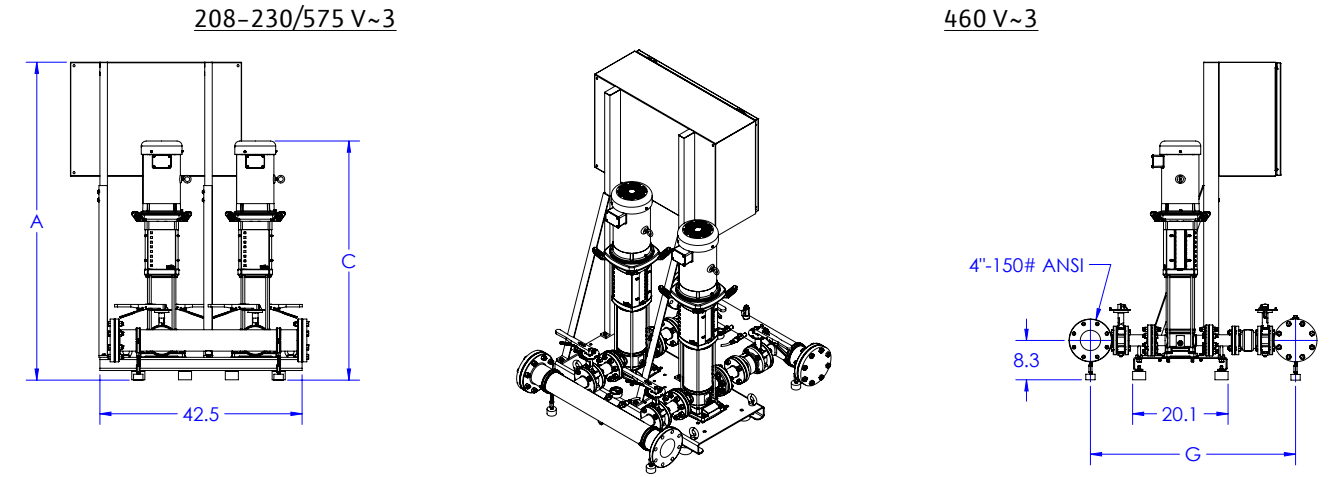
|                           |  |
|---------------------------|--|
| User Interface            | 7" Diagonal Color LCD Touchscreen                                    |
| Display Resolution        | 800 x 480 Pixels   |
| Supply Voltage            | 24VDC  |
| Max. Current Consumption  | 320mA@24V  |
| Number of Analog Inputs   | 9  |
| Number of Analog Outputs  | 2  |
| Number of Digital Inputs  | 18   |
| Number of Digital Outputs | 17   |
| Onboard Communications    | Modbus Protocol (Optional Gateways for BacNET, LonWorks, and CANbus) |
| Ethernet Port             | RJ45 port capable of transmitting data 10/100Mbps                    |
| Additional Ports          | 2.0 USB Port; Micro-SD Port  |

### Motor Data

|                        |   |
|------------------------|---|
| Power Supply           | 208-230-3 or 460-3 or 575-3                           |
| Motor Enclosure        | Totally Enclosed Fan Cooled (TEFC)                    |
| Motor Efficiency       | Nema Premium Efficiency (IE3) - Meets NEMA 12-12 Rule |
| Enclosure Construction | Rolled Steel / Cast Iron                              |
| Motor Protection Index | IP54  |
| Insulation Class       | F   |

Approval Stamp

## CO-2 HELIX V50-10-1/10/VCE



Units: inches

| CO-2 HELIX                  | 208/230V ~1IN-3OUT |      |      |      |      | 208/230V ~3 |      |      |      |      | 460V ~3 |           |      |      |      | 575 ~3 |      |           |      |      |      |      |      |           |
|-----------------------------|--------------------|------|------|------|------|-------------|------|------|------|------|---------|-----------|------|------|------|--------|------|-----------|------|------|------|------|------|-----------|
|                             | A                  | C    | G    | H    | I    | Wt. (lbs)   | A    | C    | G    | H    | I       | Wt. (lbs) | A    | C    | G    | H      | I    | Wt. (lbs) | A    | C    | G    | H    | I    | Wt. (lbs) |
| CO-2 HELIX V50-07-1/7.5/VCE | 74.7               | 50.2 | 43.1 | 50.1 | 52.1 | 963         | 64.8 | 50.2 | 43.1 | 50.1 | 52.1    | 951       | 66.9 | 50.2 | 43.1 | 43.9   | 52.1 | 895       | 64.8 | 50.2 | 42.9 | 44.1 | 51.9 | 911       |
| CO-2 HELIX V50-08-1/7.5/VCE | 74.7               | 51.2 | 43.1 | 50.1 | 52.1 | 1035        | 64.8 | 51.2 | 43.1 | 50.1 | 52.1    | 955       | 66.9 | 51.2 | 43.1 | 43.9   | 52.1 | 899       | 64.8 | 51.2 | 42.9 | 44.1 | 51.9 | 915       |
| CO-2 HELIX V50-09-1/7.5/VCE | 74.7               | 53.2 | 43.1 | 50.1 | 52.1 | 1043        | 64.8 | 53.2 | 43.1 | 50.1 | 52.1    | 963       | 66.9 | 53.2 | 43.1 | 43.9   | 52.1 | 907       | 64.8 | 53.2 | 42.9 | 44.1 | 51.9 | 923       |
| CO-2 HELIX V50-10-1/10/VCE  | -                  | -    | -    | -    | -    | -           | 64.8 | 54.2 | 40.6 | 50.1 | 49.6    | 1012      | 66.9 | 54.2 | 40.6 | 43.9   | 49.6 | 956       | 64.8 | 54.2 | 40.6 | 44.1 | 49.6 | 972       |
| CO-2 HELIX V50-11-1/10/VCE  | -                  | -    | -    | -    | -    | -           | 64.8 | 57.2 | 40.6 | 50.1 | 49.6    | 1022      | 66.9 | 57.2 | 40.6 | 43.9   | 49.6 | 966       | 64.8 | 57.2 | 40.6 | 44.1 | 49.6 | 982       |

Special Note: All weights and dimensions are approximate and should not be used as exact rough-in dimensions

### Dimensions and Weights

| Model                      | Voltage (V)   | Dimensions-inches |        |        |                    |    |           |           |                       |     |                   | Suction / Discharge Pump Size (300 Class ANSI) | Gauge Tap Size | Transducer Tap Size | Hydrunomatic Tank Valve on Manifold (Plugged) | Individual Pump Weight | Package Weight |
|----------------------------|---------------|-------------------|--------|--------|--------------------|----|-----------|-----------|-----------------------|-----|-------------------|--|----------------|---------------------|---|------------------------|----------------|
|                            |               | H (in)            | W (in) | L (in) | System Header Size | A  | C         | G         | H                     | I   | Pump Weight (lbs) |  |                |                     |   |                        |                |
| CO-2 HELIX V50-10-1/10/VCE | 208-230/575 V | 66-4/5            | 50-5/9 | 50-5/8 | 4"-150# ANSI       | 2" | 1/4" FNPT | 1/4" FNPT | 3/4" MNPT x 3/4" FNPT | 226 | 1077              |  |                |                     |   |                        |                |
|                            | 460 V         | 66-4/5            | 44-5/9 | 50-5/8 | 4"-150# ANSI       | 2" | 1/4" FNPT | 1/4" FNPT | 3/4" MNPT x 3/4" FNPT | 226 | 1035              |  |                |                     |   |                        |                |

### TEFC Motor Data

| Model                      | P2 (HP) | Phase (-) | Voltage (V)     | FLA (per pump) (A) | Pmax (PSI) |
|----------------------------|---------|-----------|-----------------|--------------------|------------|
| CO-2 HELIX V50-10-1/10/VCE | 10      | 3         | 208-230/460/575 | 24.8-24.2/12.1/9.5 | 250        |

WILO USA LLC +1 262 204-6600  
www.wilo-usa.com  
info@wilo-usa.com

WILO Canada Inc. +1 403 276-9456  
www.wilo-canada.com  
info@wilo-canada.com

# Submittal Data Sheet

Wilo CO-Helix - NSF 61/372 Pressure Boosting System



# Submittal Data Sheet

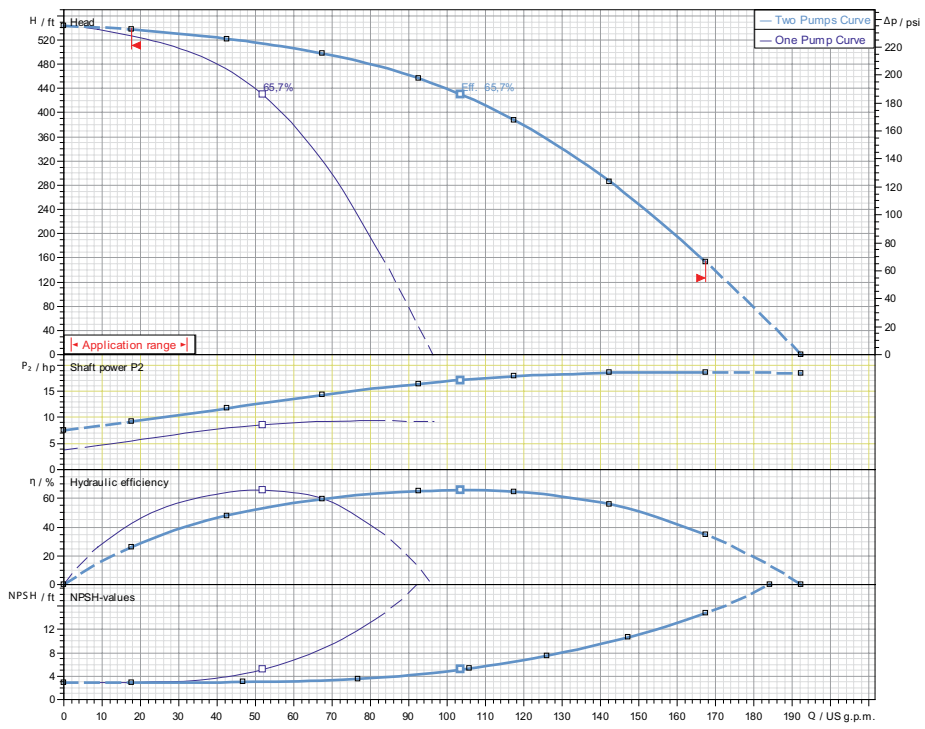
Wilo CO-Helix - NSF 61/372 Pressure Boosting System



## CO-2 HELIX V50-11-1/10/VCE

|  |               |       |
|--|---------------|-------|
|  | Project:      |       |
|  | Engineer:     |       |
|  | Contractor:   |       |
|  | Submitted By: | Date: |
|  | Approved By:  | Date: |

| Tag # | Model #                    | Flow | BOOST PSI | Min. Inlet PSI | HP/Pump | Phase | Voltage | RPM  |
|-------|----------------------------|------|-----------|----------------|---------|-------|---------|------|
|       | CO-2 HELIX V50-11-1/10/VCE |      |           |                | 10      |       |         | 3600 |



- ### Applications
- Water Supply
  - Agriculture
  - Washing / Sprinkling Systems
  - Pressure Boosting
  - Cooling Circuits
  - Condensate Return

### Materials of Construction

|                      |   |
|----------------------|---|
| Pump Volute          | AISI304 stainless steel with ANSI flanges   |
| Impeller             | 3D Laser welded AISI 304 Stainless Steel  |
| Shaft                | AISI304, AISI318 LN, or AISI431 Stainless Steel   |
| Elastomers           | EPDM  |
| Isolation Valves     | 304 Stainless Steel Ball Valves   |
| Check Valves         | Wafer Style, 316 Stainless Steel internals. Non-slam, Plunger-type with EPDM seal/ Cast Iron Body |
| Mechanical Seal      | Cartridge Seal: Sleeve AISI316L / Spring Clips AISI304  |
| Pressure Transducers | 316 Stainless Steel   |
| Pressure Gauges      | 304 Stainless Steel Housing with 316 Stainless Steel wetted parts                                 |
| System base          | Steel (S235JR)  |
| Vibration Isolators  | Neoprene, Height Adjustable   |

### Technical Data - Operational Ranges

|                     |  |
|---------------------|--|
| Liquid Temp Range   | -4°F to +248°F (Min. 32 °F for Domestic Water) |
| Ambient Temp Range  | +32°F to +104 °F                               |
| Max Inlet Pressure  | 145 PSI  |
| Max System Pressure | 250 PSI  |

### Technical Data - Panel

|                           |  |
|---------------------------|--|
| Power Supply              | 208-230/460-3 or 575-3   |
| Enclosure                 | NEMA 12 (3R Available Upon Request)  |
| Standard                  | Meets UL 508A  |
| Variable Frequency Drives | Danfoss FC-51 (1-10 HP for 208-23/460v-3)<br>Danfoss FC-101 (1-10 HP for 575v-3) |

### Technical Data - PLC

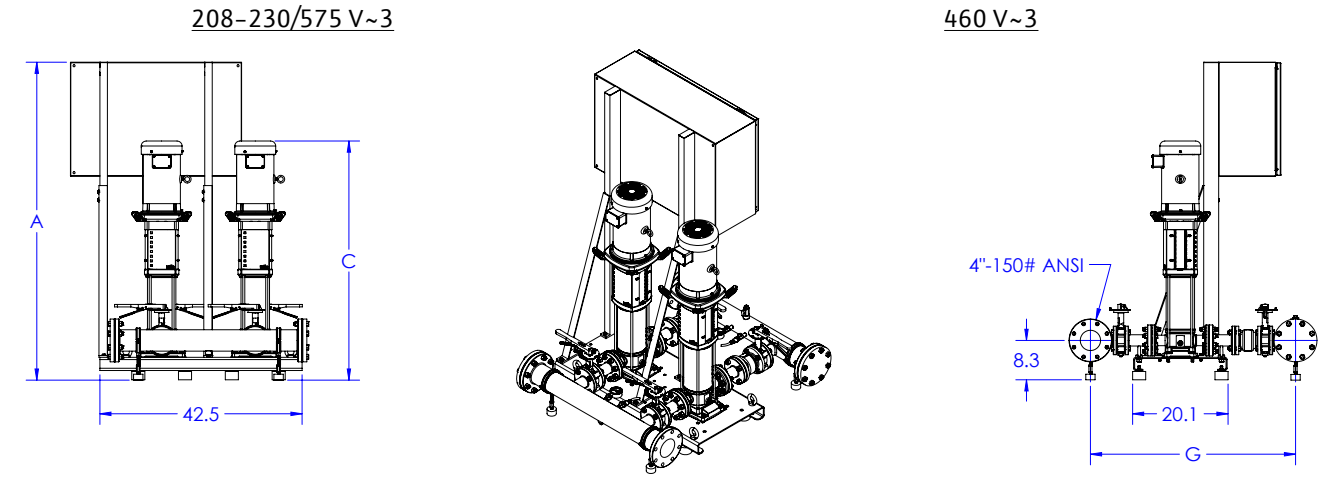
|                           |  |
|---------------------------|--|
| User Interface            | 7" Diagonal Color LCD Touchscreen                                    |
| Display Resolution        | 800 x 480 Pixels   |
| Supply Voltage            | 24VDC  |
| Max. Current Consumption  | 320mA@24V  |
| Number of Analog Inputs   | 9  |
| Number of Analog Outputs  | 2  |
| Number of Digital Inputs  | 18   |
| Number of Digital Outputs | 17   |
| Onboard Communications    | Modbus Protocol (Optional Gateways for BacNET, LonWorks, and CANbus) |
| Ethernet Port             | RJ45 port capable of transmitting data 10/100Mbps                    |
| Additional Ports          | 2.0 USB Port; Micro-SD Port  |

### Motor Data

|                        |   |
|------------------------|---|
| Power Supply           | 208-230-3 or 460-3 or 575-3                           |
| Motor Enclosure        | Totally Enclosed Fan Cooled (TEFC)                    |
| Motor Efficiency       | Nema Premium Efficiency (IE3) - Meets NEMA 12-12 Rule |
| Enclosure Construction | Rolled Steel / Cast Iron                              |
| Motor Protection Index | IP54  |
| Insulation Class       | F   |

Approval Stamp

## CO-2 HELIX V50-11-1/10/VCE



Units: inches

| CO-2 HELIX                  | 208/230V ~1IN-3OUT |      |      |      |      |           | 208/230V ~3 |      |      |      |      |           | 460V ~3 |      |      |      |      |           | 575 ~3 |      |      |      |      |           |
|-----------------------------|--------------------|------|------|------|------|-----------|-------------|------|------|------|------|-----------|---------|------|------|------|------|-----------|--------|------|------|------|------|-----------|
|                             | A                  | C    | G    | H    | I    | Wt. (lbs) | A           | C    | G    | H    | I    | Wt. (lbs) | A       | C    | G    | H    | I    | Wt. (lbs) | A      | C    | G    | H    | I    | Wt. (lbs) |
| CO-2 HELIX V50-07-1/7.5/VCE | 74.7               | 50.2 | 43.1 | 50.1 | 52.1 | 963       | 64.8        | 50.2 | 43.1 | 50.1 | 52.1 | 951       | 66.9    | 50.2 | 43.1 | 43.9 | 52.1 | 895       | 64.8   | 50.2 | 42.9 | 44.1 | 51.9 | 911       |
| CO-2 HELIX V50-08-1/7.5/VCE | 74.7               | 51.2 | 43.1 | 50.1 | 52.1 | 1035      | 64.8        | 51.2 | 43.1 | 50.1 | 52.1 | 955       | 66.9    | 51.2 | 43.1 | 43.9 | 52.1 | 899       | 64.8   | 51.2 | 42.9 | 44.1 | 51.9 | 915       |
| CO-2 HELIX V50-09-1/7.5/VCE | 74.7               | 53.2 | 43.1 | 50.1 | 52.1 | 1043      | 64.8        | 53.2 | 43.1 | 50.1 | 52.1 | 963       | 66.9    | 53.2 | 43.1 | 43.9 | 52.1 | 907       | 64.8   | 53.2 | 42.9 | 44.1 | 51.9 | 923       |
| CO-2 HELIX V50-10-1/10/VCE  | -                  | -    | -    | -    | -    | -         | 64.8        | 54.2 | 40.6 | 50.1 | 49.6 | 1012      | 66.9    | 54.2 | 40.6 | 43.9 | 49.6 | 956       | 64.8   | 54.2 | 40.6 | 44.1 | 49.6 | 972       |
| CO-2 HELIX V50-11-1/10/VCE  | -                  | -    | -    | -    | -    | -         | 64.8        | 57.2 | 40.6 | 50.1 | 49.6 | 1022      | 66.9    | 57.2 | 40.6 | 43.9 | 49.6 | 966       | 64.8   | 57.2 | 40.6 | 44.1 | 49.6 | 982       |

Special Note: All weights and dimensions are approximate and should not be used as exact rough-in dimensions

### Dimensions and Weights

| Model                      | Voltage (V)   | Dimensions-inches |        |        |                    |    |           |           |                       |     |           | Suction / Discharge Pump Size (300 Class ANSI) | Gauge Tap Size | Transducer Tap Size | Hydronumatic Tank Valve on Manifold (Plugged) | Pump Weight (lbs) | Package Weight (lbs) |
|----------------------------|---------------|-------------------|--------|--------|--------------------|----|-----------|-----------|-----------------------|-----|-----------|--|----------------|---------------------|---|-------------------|----------------------|
|                            |               | H (in)            | W (in) | L (in) | System Header Size | A  | C         | G         | H                     | I   | Wt. (lbs) |  |                |                     |   |                   |                      |
| CO-2 HELIX V50-11-1/10/VCE | 208-230/575 V | 66-4/5            | 50-5/9 | 50-5/8 | 4"-150# ANSI       | 2" | 1/4" FNPT | 1/4" FNPT | 3/4" MNPT x 3/4" FNPT | 258 | 1087      |  |                |                     |   |                   |                      |
|                            | 460 V         | 66-4/5            | 44-5/9 | 50-5/8 | 4"-150# ANSI       | 2" | 1/4" FNPT | 1/4" FNPT | 3/4" MNPT x 3/4" FNPT | 258 | 1045      |  |                |                     |   |                   |                      |

### TEFC Motor Data

| Model                      | P2 (HP) | Phase (-) | Voltage (V)     | FLA (per pump) (A) | Pmax (PSI) |
|----------------------------|---------|-----------|-----------------|--------------------|------------|
| CO-2 HELIX V50-11-1/10/VCE | 10      | 3         | 208-230/460/575 | 24.8-24.2/12.1/9.5 | 250        |

WILO USA LLC +1 262 204-6600  
www.wilo-usa.com  
info@wilo-usa.com

WILO Canada Inc. +1 403 276-9456  
www.wilo-canada.com  
info@wilo-canada.com