

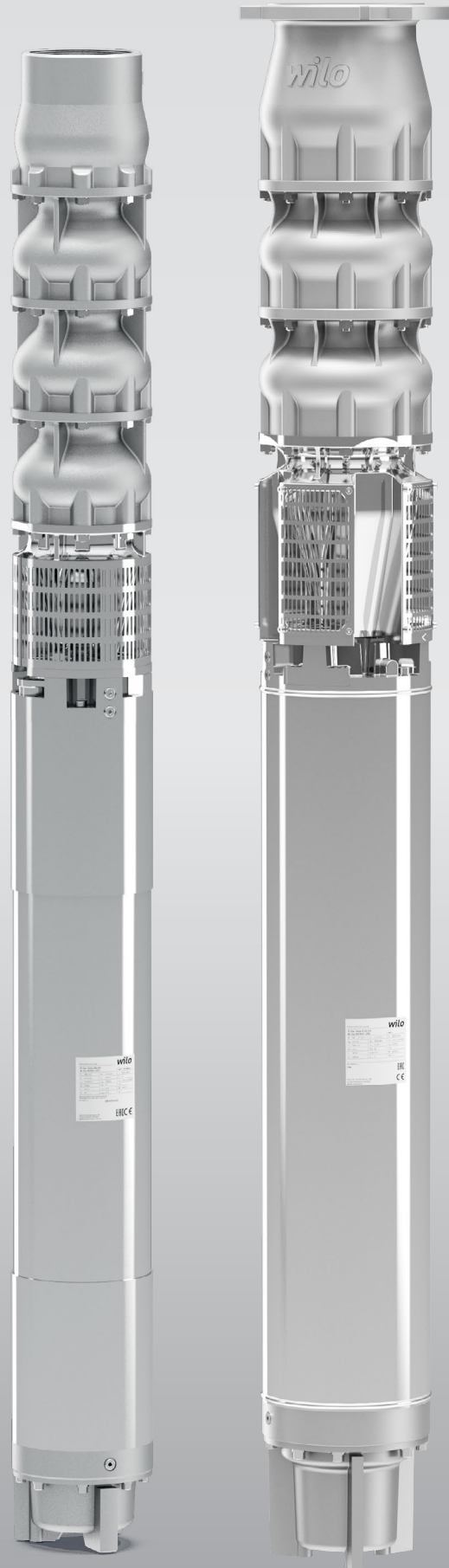
# Wilo 6", 7", 8", 10" Submersibles Data Booklet



**Best in class efficiencies!**

**Zetos ZK8, ZK10**

Ask your Wilo representative today for details





### SPI Series

Dimensional Drawing	4
---------------------	---

### Wilo-SPI 6

(6" Stainless Steel Submersible Well Pumps)

General Material Data	5
Curves	
50 GPM	6
90 GPM	9
150 GPM	12
180 GPM	14
230 GPM	16
300 GPM	17
Weights & Dimensions	
50 GPM	20
90 GPM	22
150 GPM	24
180 GPM	26
230 GPM	27
300 GPM	28
6" Motor Data	29

### Wilo-SPI 7

(7" Stainless Steel Submersible Well Pumps)

General Material Data	31
Curves	
400 GPM	32
500 GPM	33
550 GPM	34
Weights & Dimensions	
400 GPM	35
500 GPM	36
550 GPM	37

### Wilo-SPI 8

(8" Stainless Steel Submersible Well Pumps)

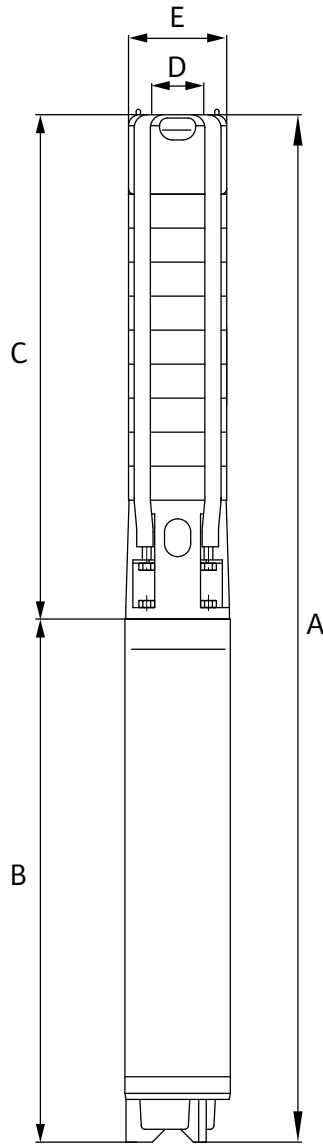
General Material Data	38
Curves	
550 GPM	39
650 GPM	40
800 GPM	41
Weights & Dimensions	
550 GPM	42
650 GPM	43
800 GPM	44

### Wilo-SPI 10

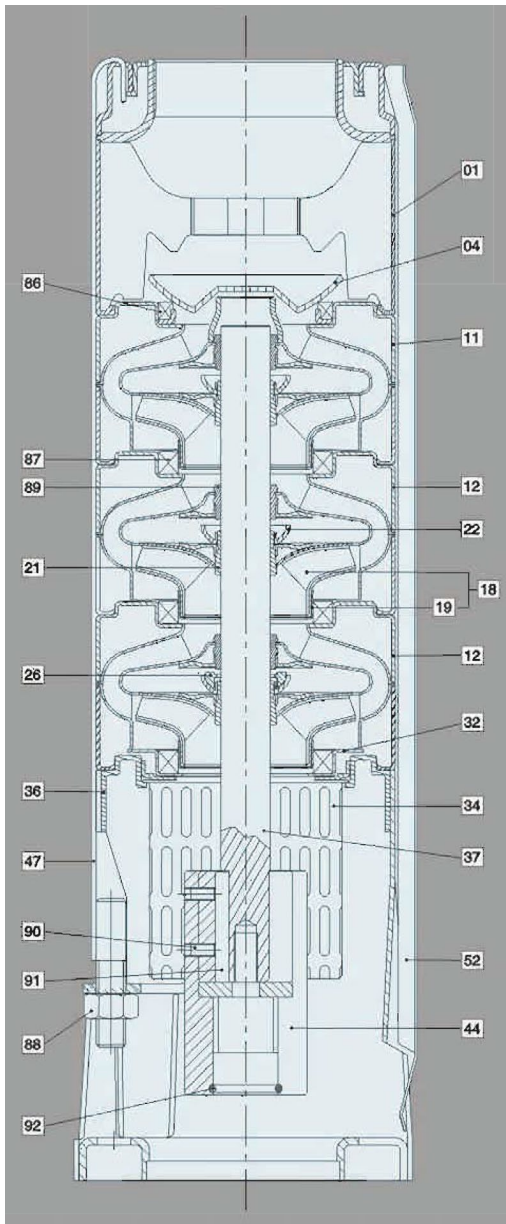
(10" Stainless Steel Submersible Well Pumps)

General Material Data	45
Curves	
1200 GPM	46
Weights & Dimensions	
1200 GPM	47
650 GPM	
7", 8", 10" Motor Data	48
	50

### Wire Sizing (6", 7", 8", 10")



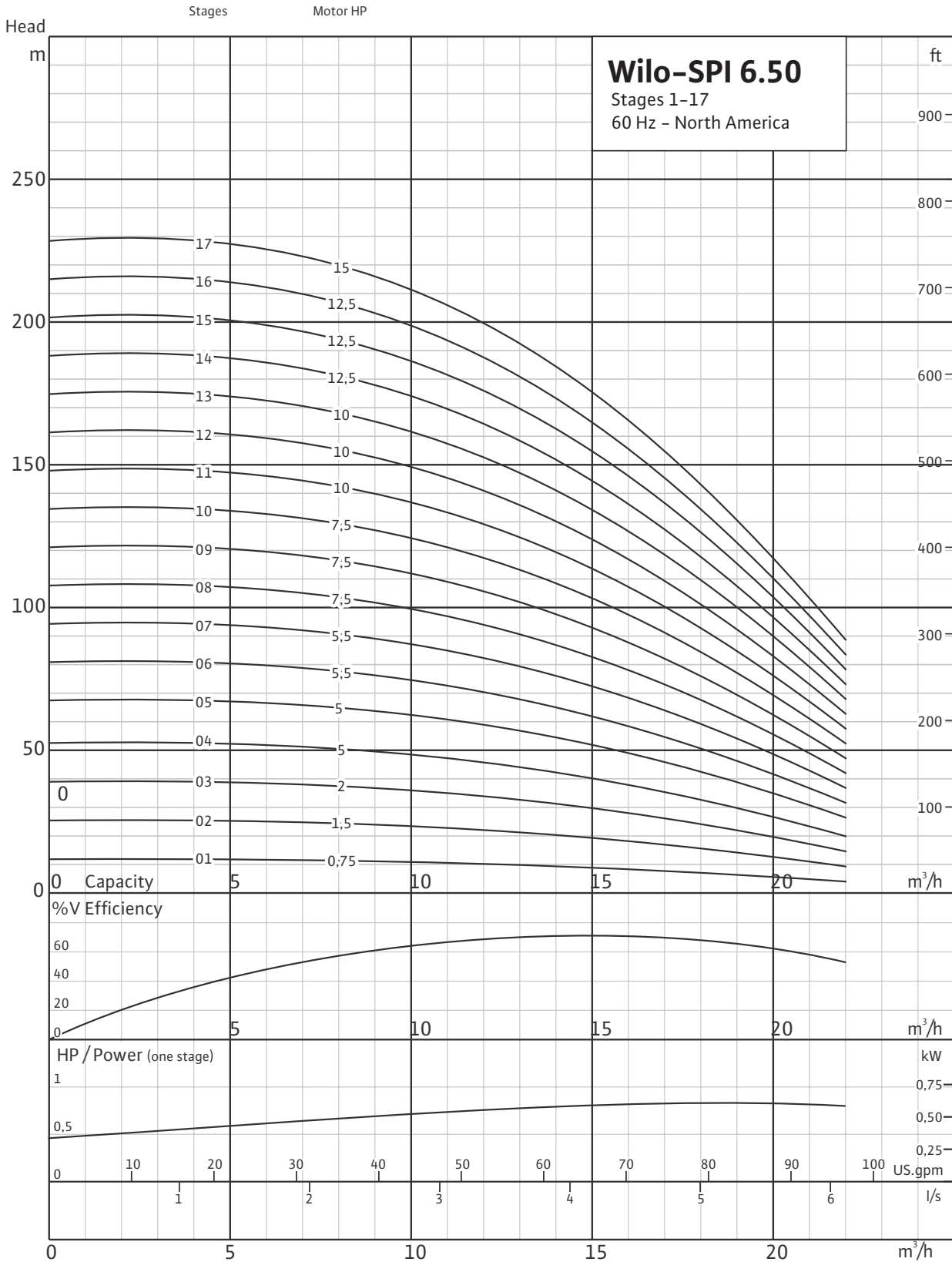
Certified to  
NSF/ANSI 61 & 372



Pos.	Components	Material	Standard
01	Discharge	Stainless Steel	304
04	Valve Cone	Stainless Steel	304
11	Top Diffuser	Stainless Steel	304
12	Diffuser	Stainless Steel	304
18	Impeller	Stainless Steel	304
19	Ring of Impeller	Stainless Steel	304
21	Split Cone	Stainless Steel	304
22	Split Cone Nut	Stainless Steel	304
26	Spacing Washer For Stop Ring	Carbon/Graphite/PTFE	
32	Neck Ring Retainer	Stainless Steel	304
34	Strainer	Stainless Steel	304
36	Suction Interconnector	Stainless Steel	304
37	Pump Shaft	Stainless Steel	431
44	Coupling	Stainless Steel	304
47	Strap	Stainless Steel	304
52	Cable Guard	Stainless Steel	304
86	Valve Seat	SUS304+NBR	
87	Neck Ring	SUS304+NBR	
88	Nut	Stainless Steel	304
89	Bearing	NBR	
90	Screw	Stainless Steel	304
91	Key	Stainless Steel	304
92	O-Ring	NBR	

\*AISI 316 Stainless Steel Pumps are available on request.

Stages 1-17

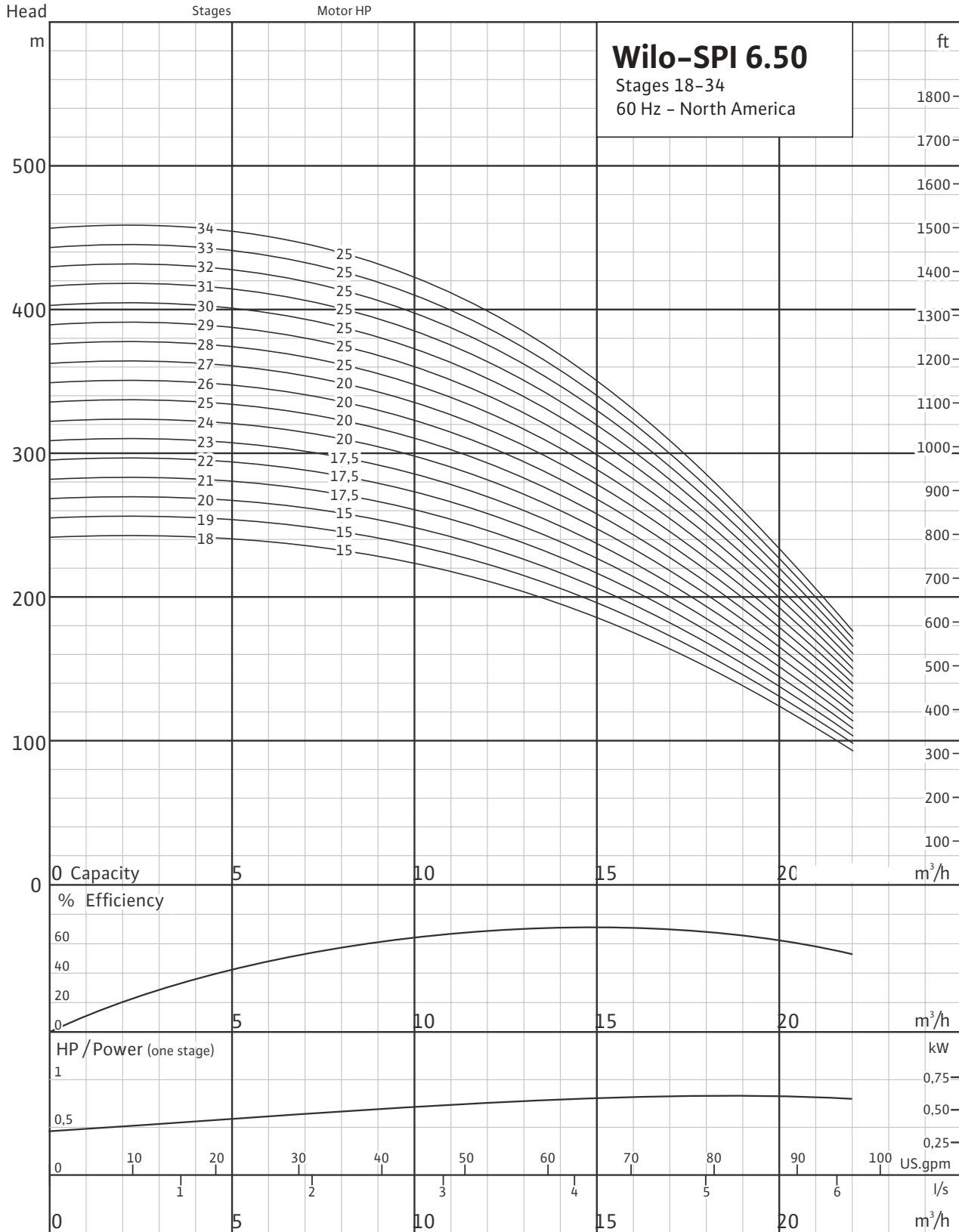


# Wilo-SPI 6.50

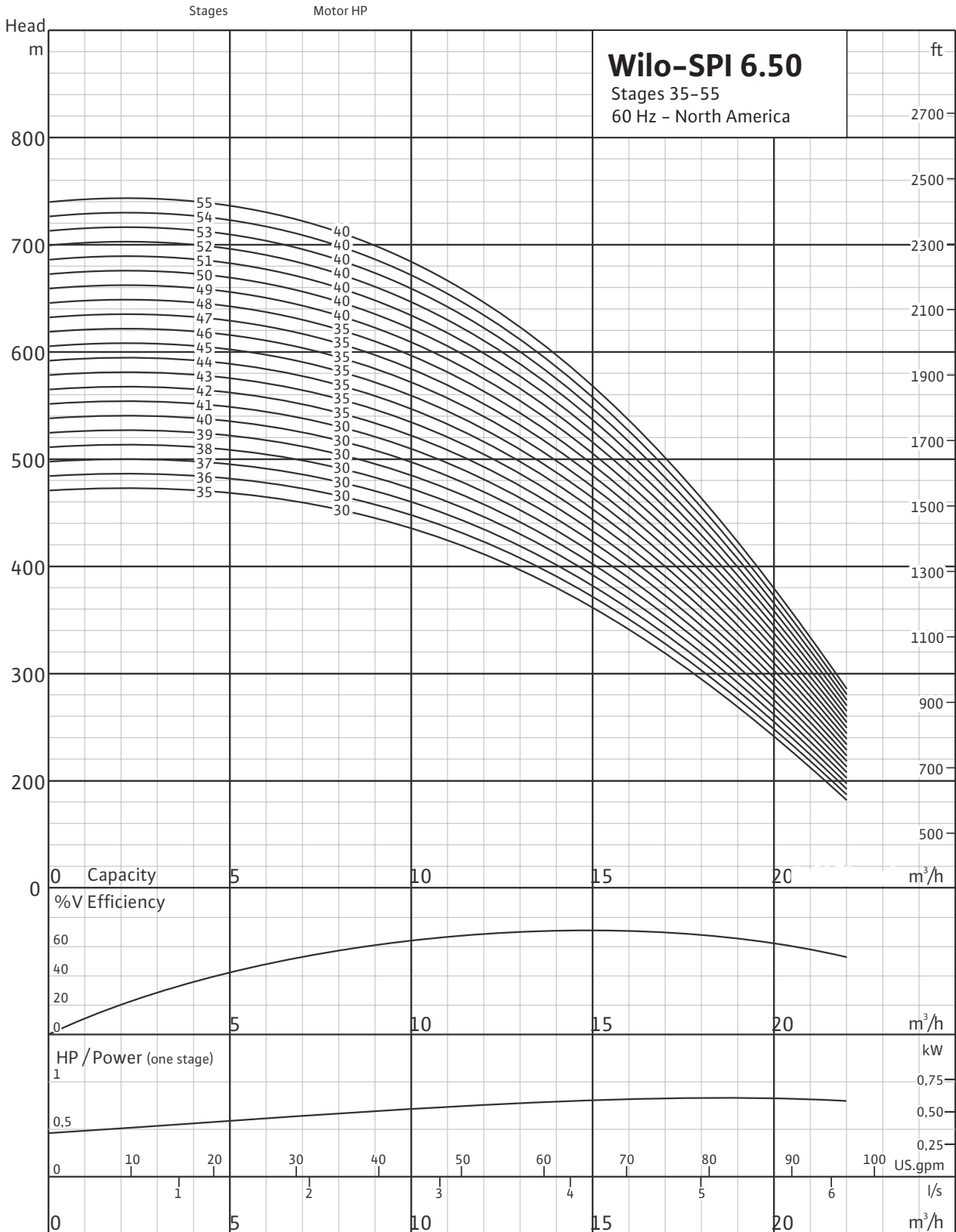
## Stainless Steel Submersible Well Pumps



### Stages 18-34

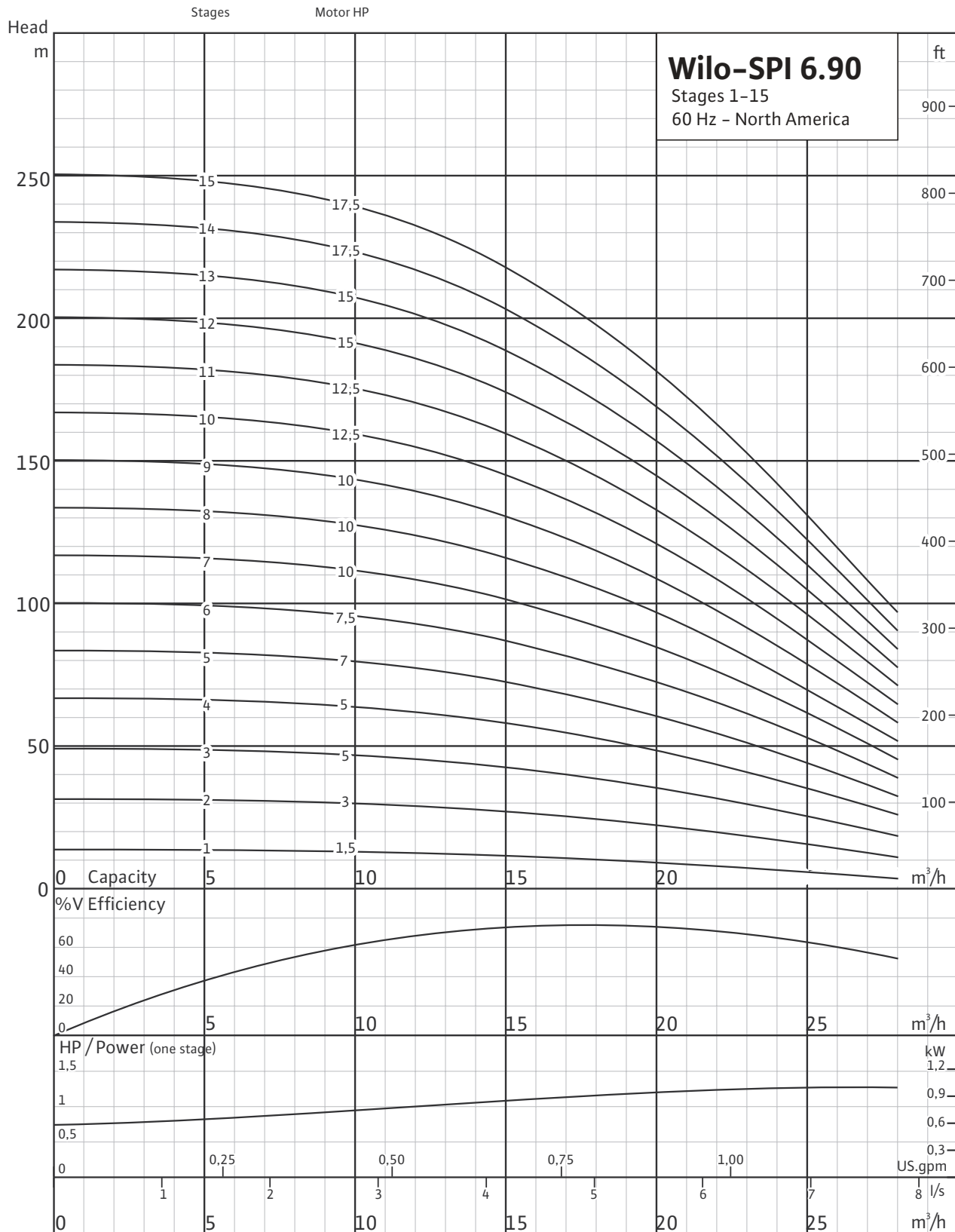


Stages 35-55





Stages 1-15

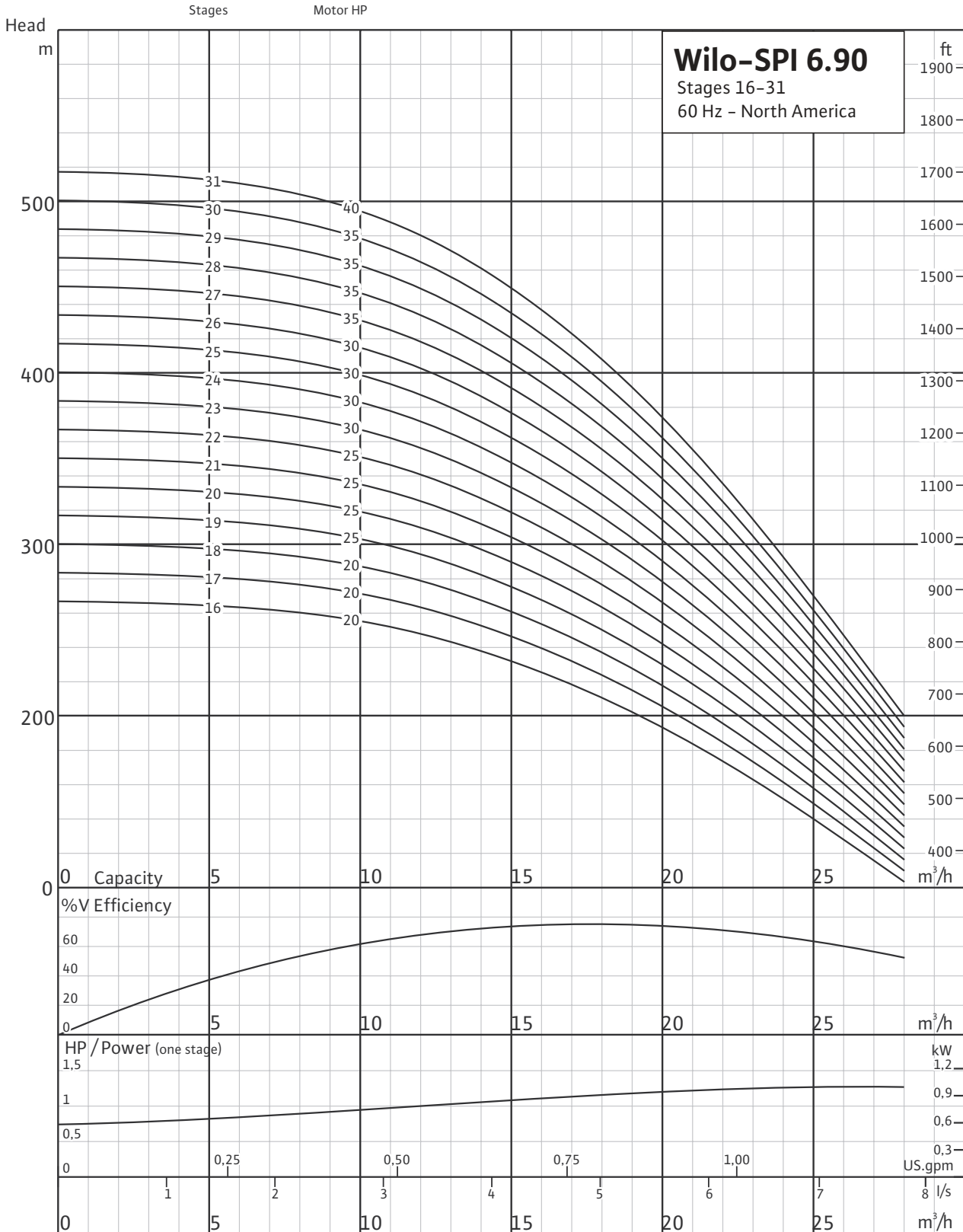


# Wilco-SPI 6.90

Stainless Steel Submersible Well Pumps



## Stages 16-31

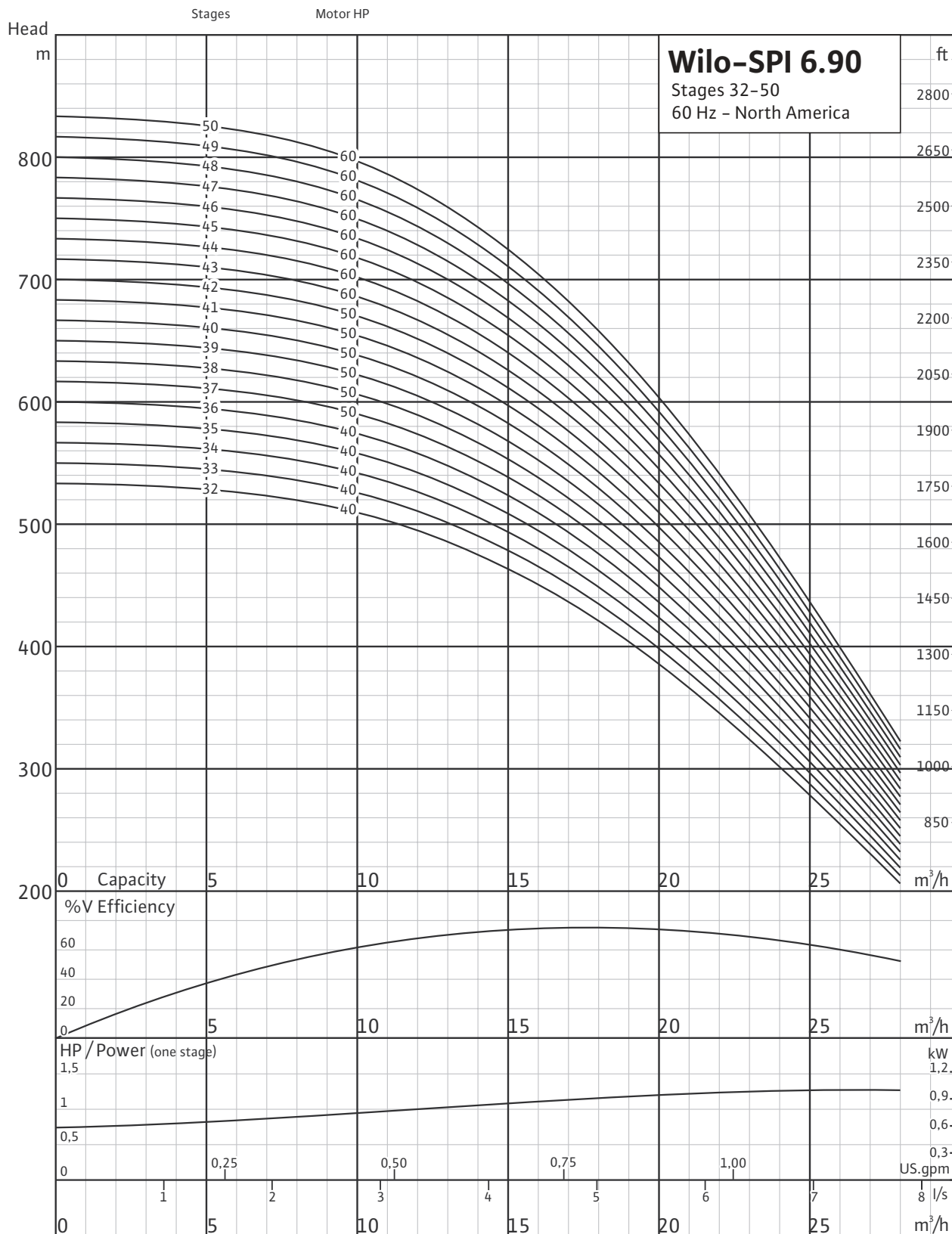


# Wilo-SPI 6.90

## Stainless Steel Submersible Well Pumps



### Stages 32-50

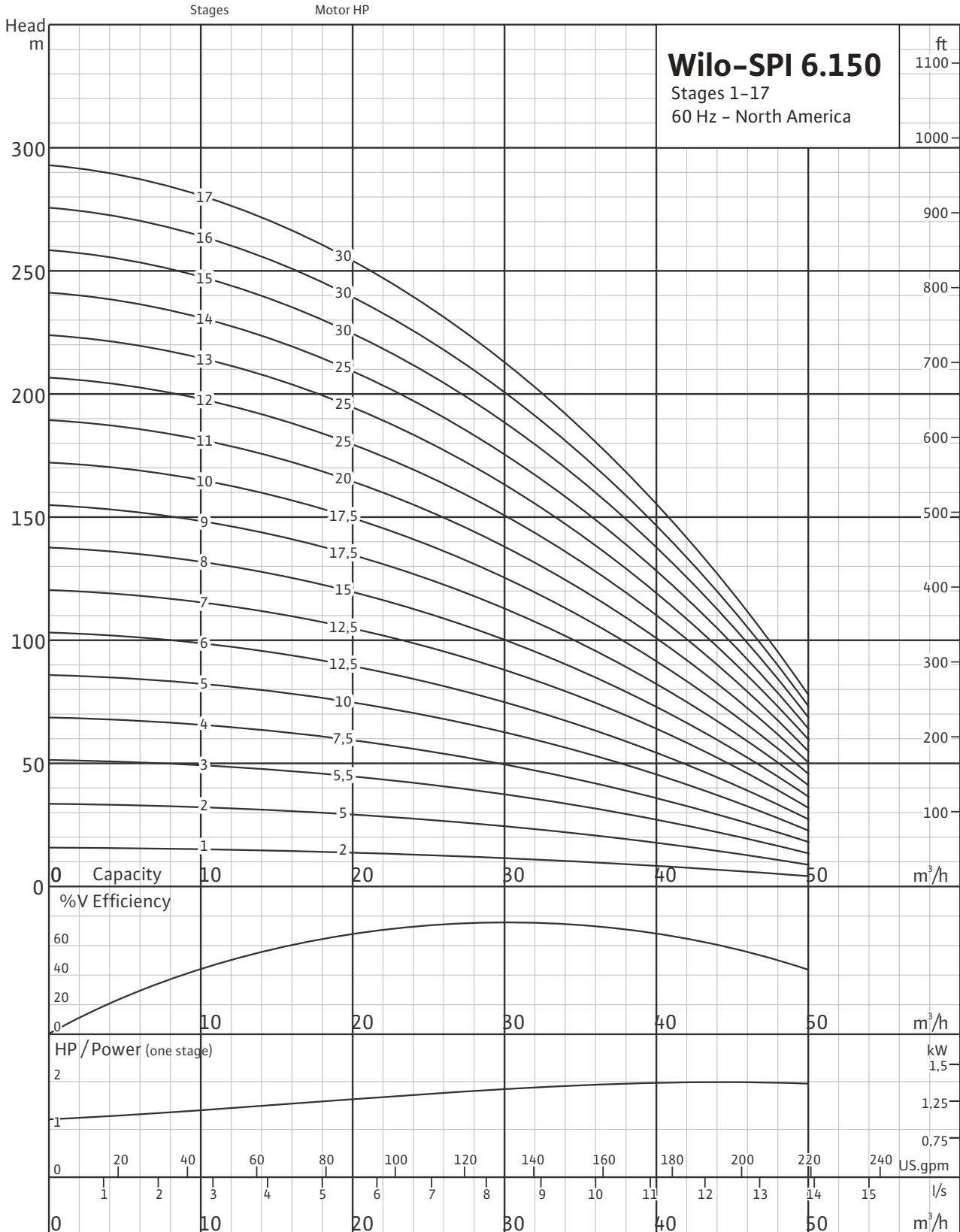


# Wilo-SPI 6.150

Stainless Steel Submersible Well Pumps



## Stages 1-17

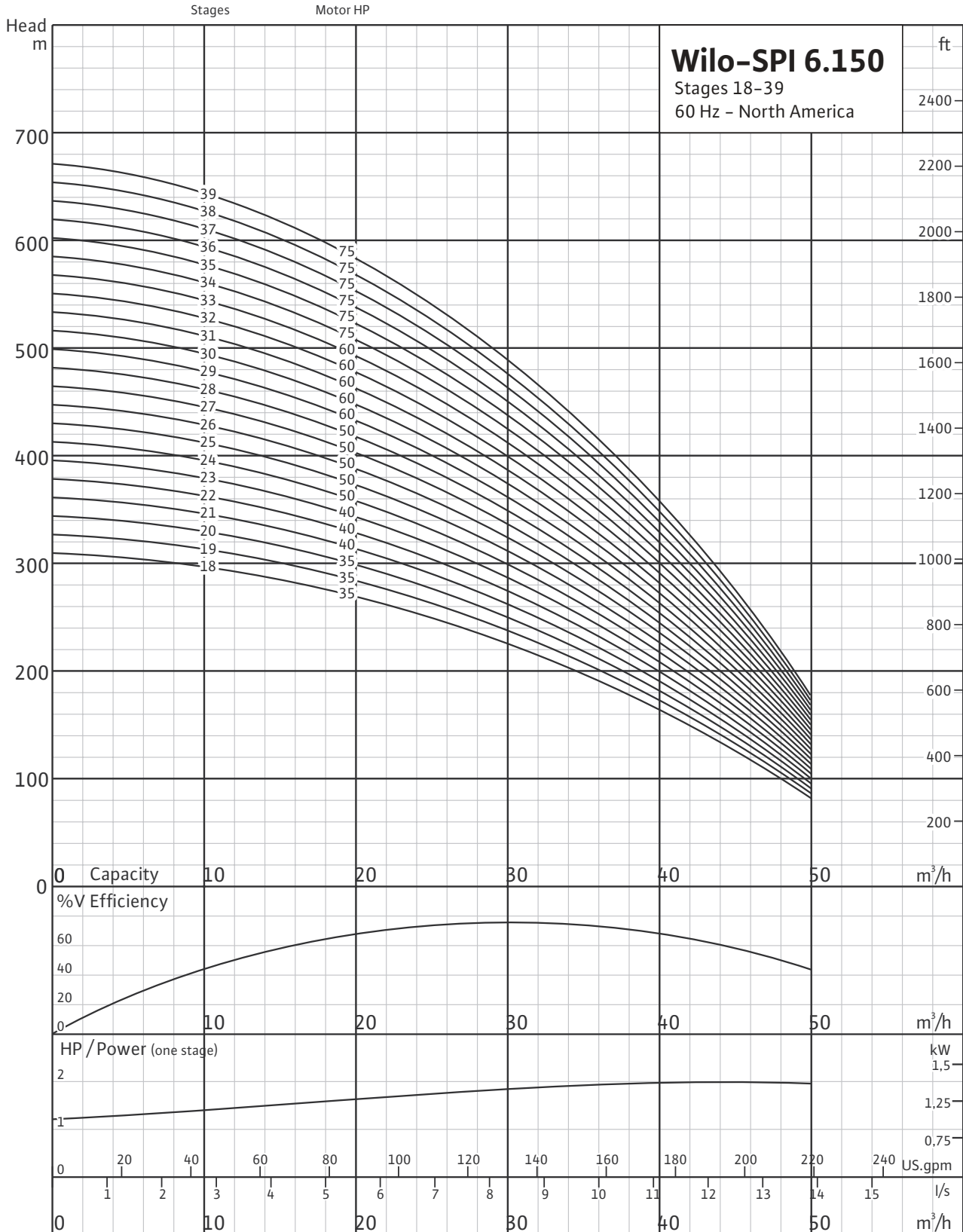


# Wilo-SPI 6.150

## Stainless Steel Submersible Well Pumps



### Stages 18-39

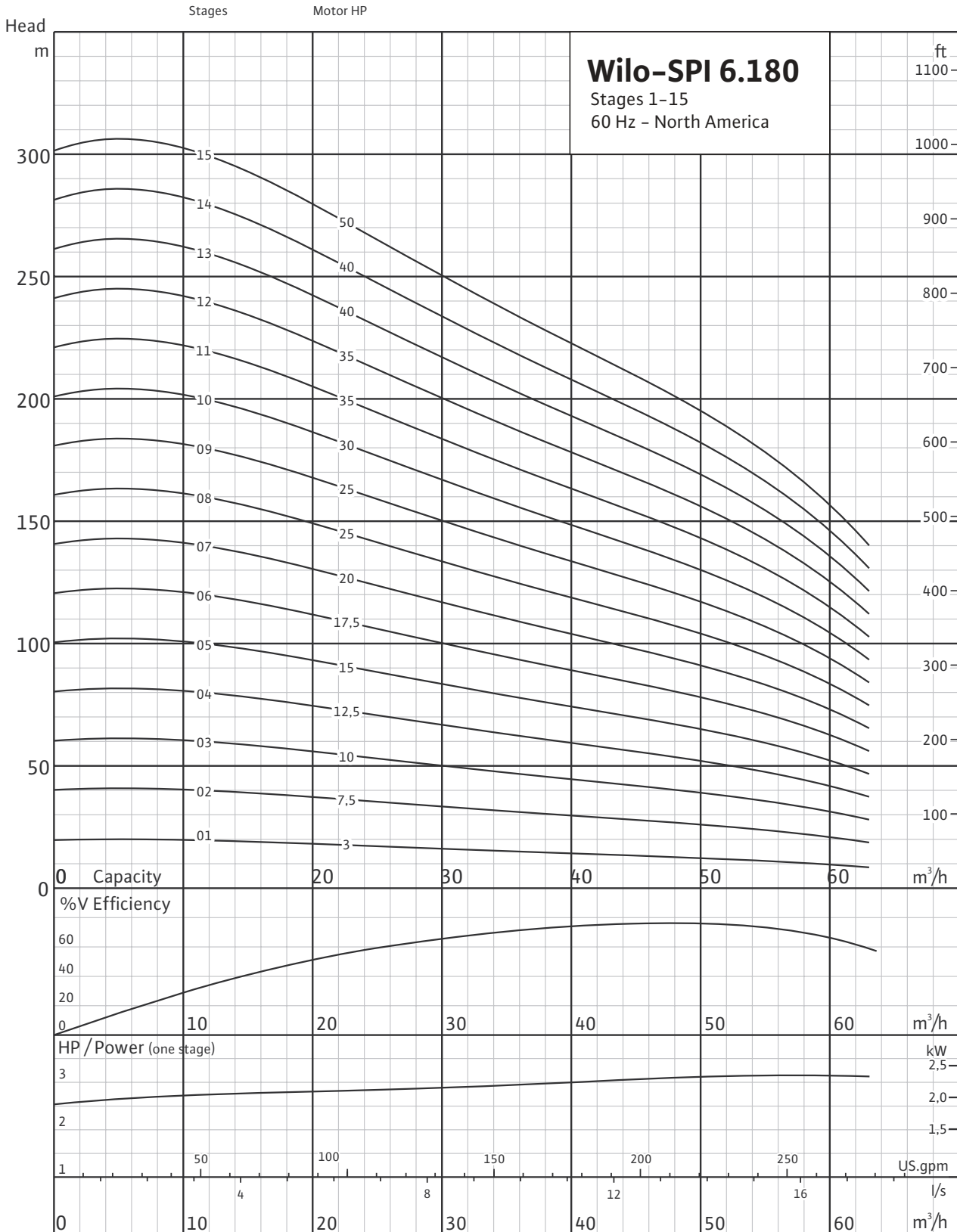


# Wilco-SPI 6.180

Stainless Steel Submersible Well Pumps



## Stages 1-15

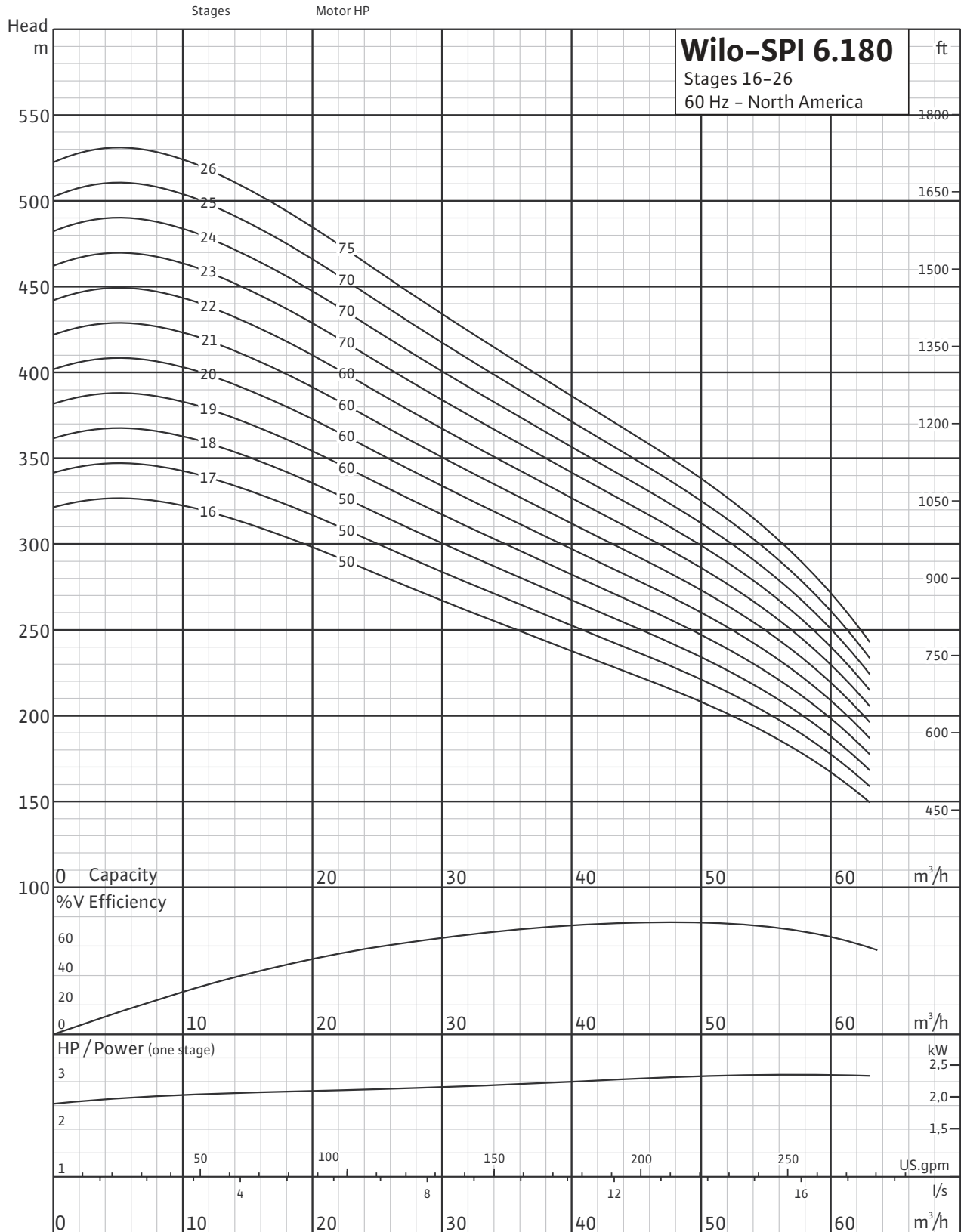


# Wilo-SPI 6.180

Stainless Steel Submersible Well Pumps



## Stages 16-26

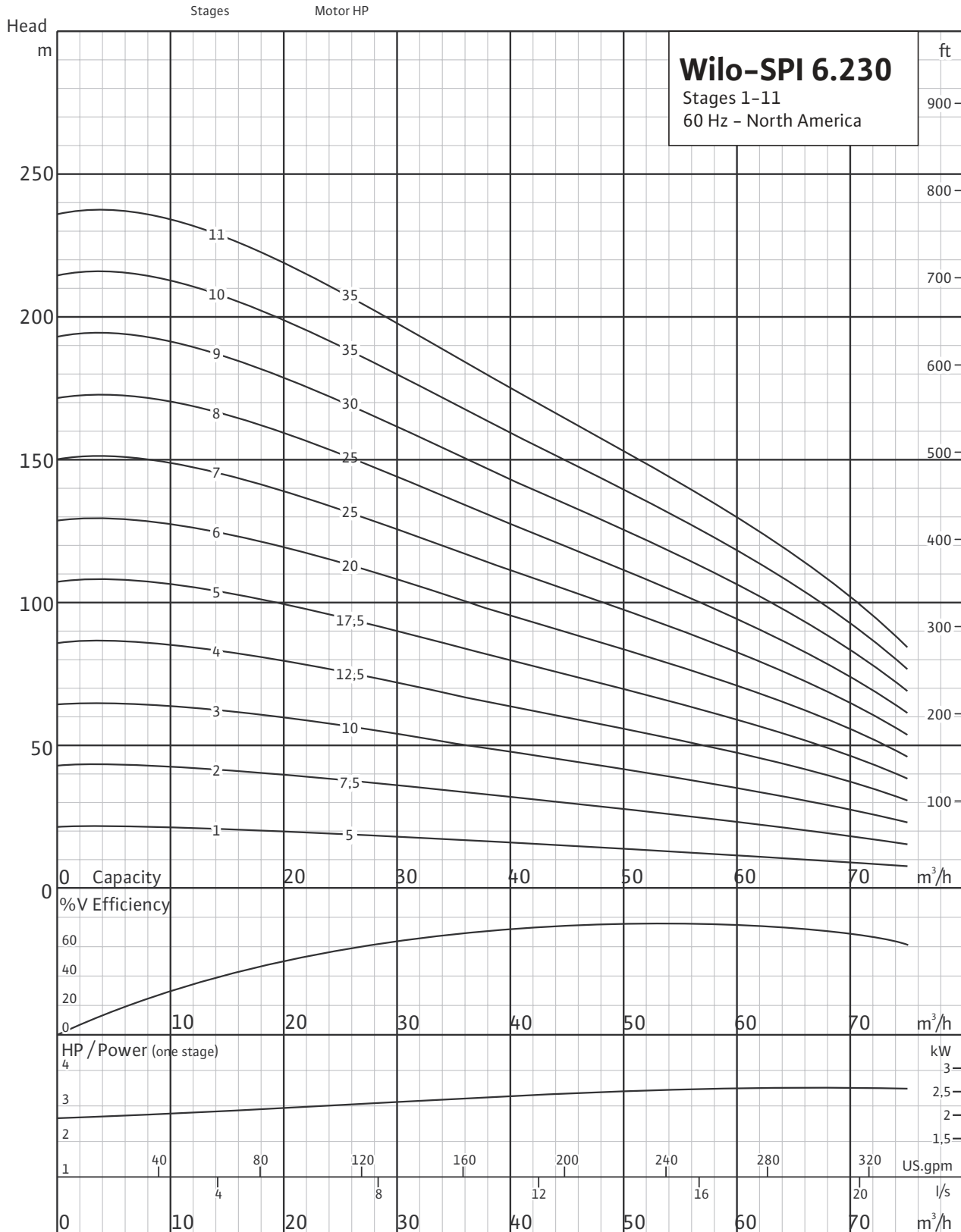


# Wilo-SPI 6.230

Stainless Steel Submersible Well Pumps



## Stages 1-11



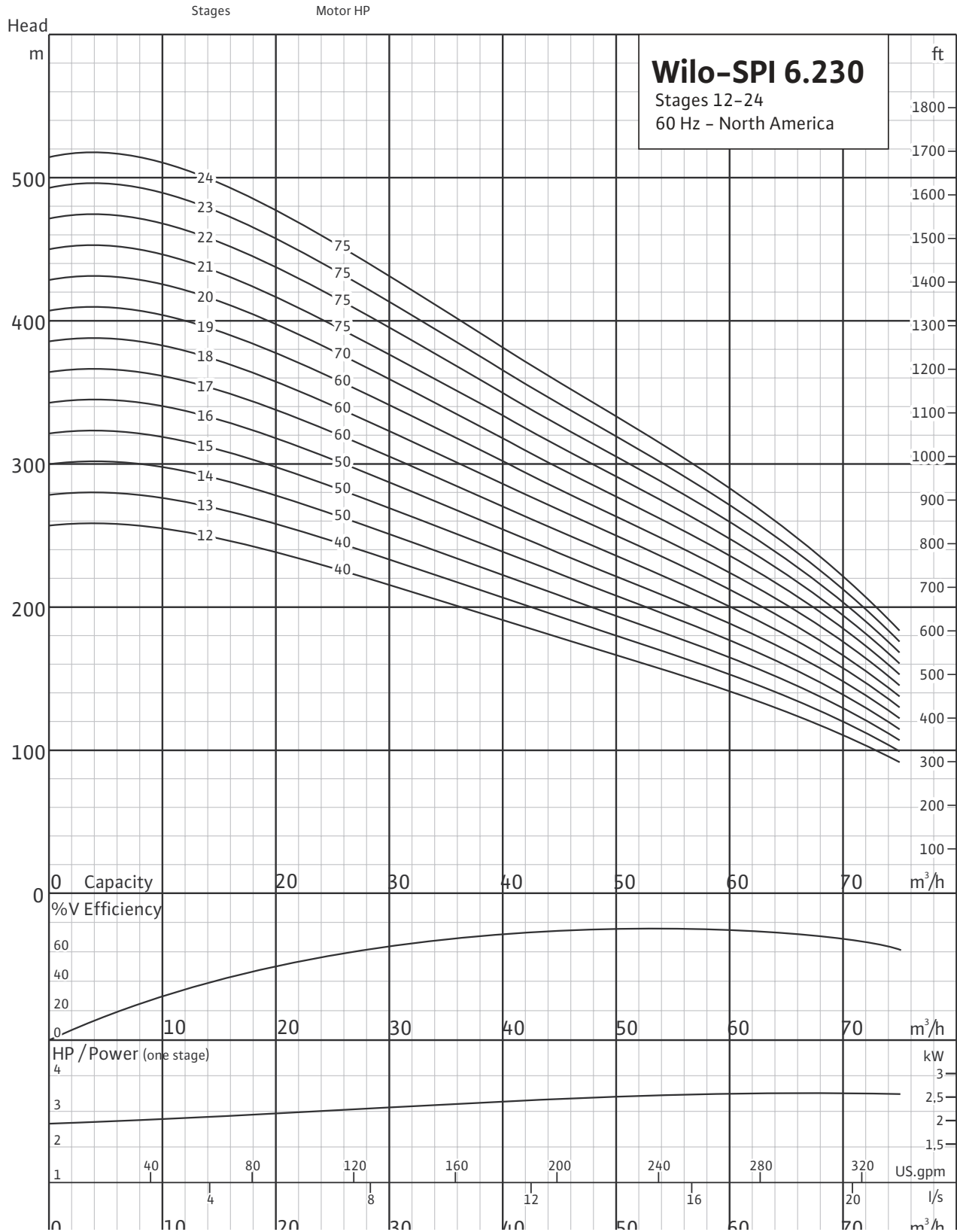


# Wilo-SPI 6.230

## Stainless Steel Submersible Well Pumps



### Stages 12-24

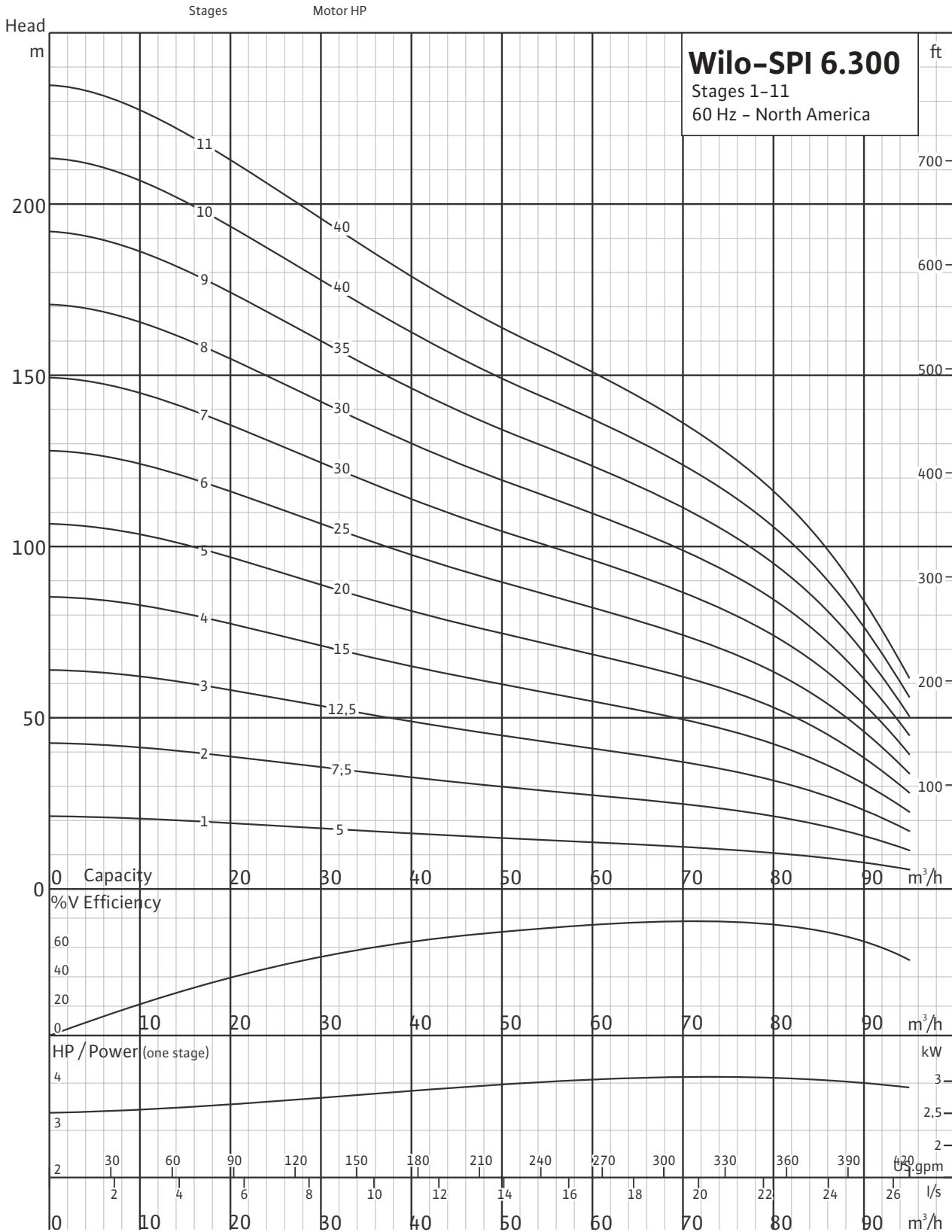


# Wilco-SPI 6.300

Stainless Steel Submersible Well Pumps



## Stages 1-11

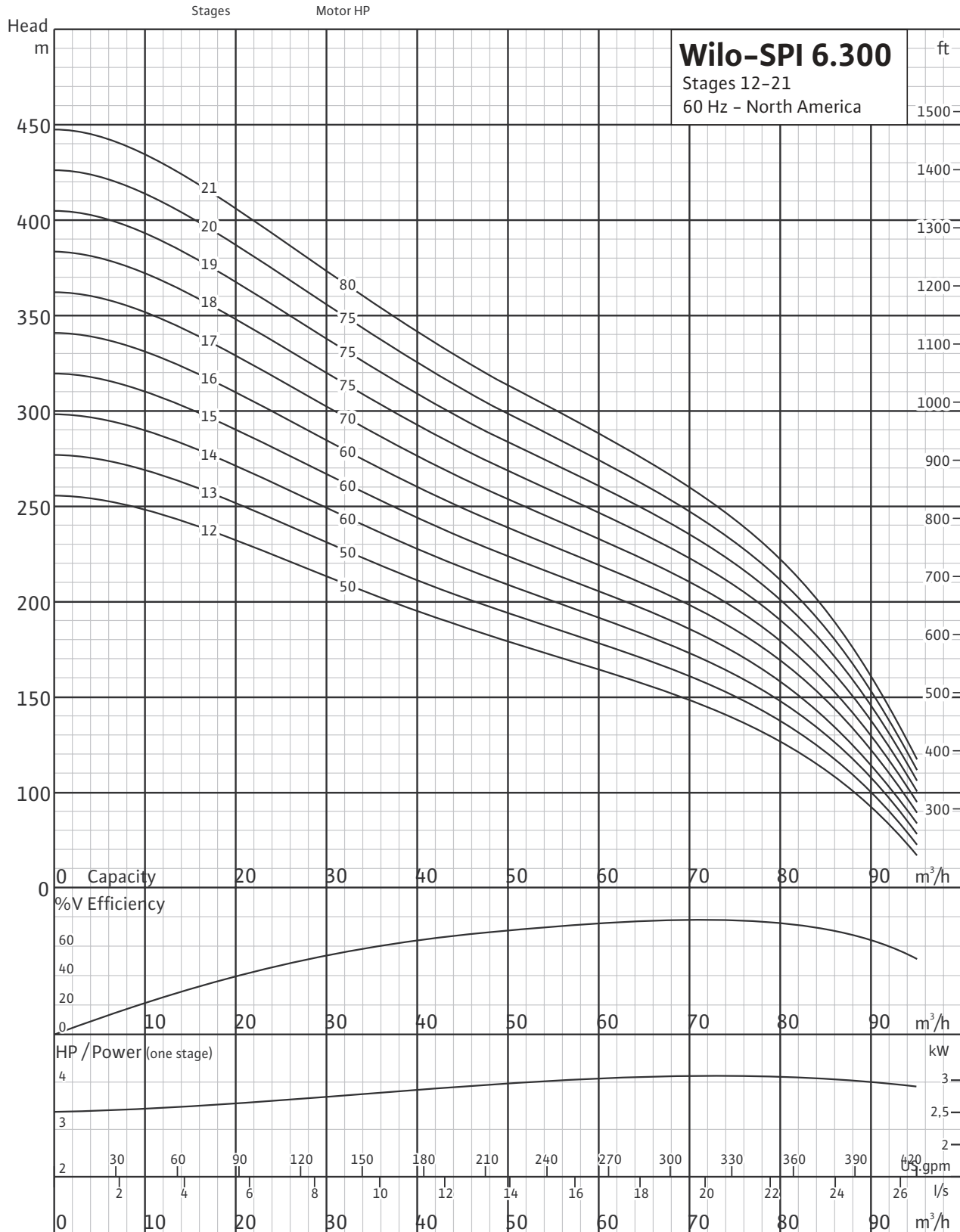


# Wilo-SPI 6.300

Stainless Steel Submersible Well Pumps



## Stages 12-21



# Wilo-SPI 6.50

## Stainless Steel Submersible Well Pumps



### Weights and Dimensions

50 GPM										
Model	PEI	HP	Dimensions (In.)					Weight (lbs.)		
			A	B	C	D	E	Complete Unit	Pump End	Motor
SPI 6.50-01	0.78	1	36.6	19.9	16.7	3	3.7	71	15	55
SPI 6.50-02	0.78	2	41	21.7	19.3	3	3.7	82	18	64
SPI 6.50-03	0.78	3	44.9	23.1	21.7	3	3.7	95	20	75
SPI 6.50-04	0.78	3	44.1	24	20.2	3	3.7	97	22	75
SPI 6.50-05	0.78	4	48.1	25.6	22.5	3	3.7	112	24	86
SPI 6.50-06	0.78	5.5	50.4	25.6	24.9	3	5.6	117	29	88
SPI 6.50-07	0.78	5.5	52.8	25.6	27.3	3	5.6	119	31	88
SPI 6.50-08	0.78	7.5	56.3	26.7	29.6	3	5.6	129	33	96
SPI 6.50-09	0.78	7.5	58.7	26.7	32	3	5.6	133	37	96
SPI 6.50-10	0.78	7.5	61.1	26.7	34.4	3	5.6	136	40	96
SPI 6.50-11	0.78	10	66.7	29.8	36.8	3	5.6	154	44	110
SPI 6.50-12	0.78	10	69	29.8	39.2	3	5.6	157	46	110
SPI 6.50-13	0.78	10	71.4	29.8	41.6	3	5.6	161	51	110
SPI 6.50-14	0.78	15	77.4	33.5	43.9	3	5.6	185	53	132
SPI 6.50-15	0.78	15	79.8	33.5	46.3	3	5.6	190	57	132
SPI 6.50-16	0.78	15	82.2	33.5	48.7	3	5.6	192	60	132
SPI 6.50-17	0.78	15	84.6	33.5	51.1	3	5.6	194	62	132
SPI 6.50-18	0.78	15	87	33.5	53.5	3	5.6	198	66	132
SPI 6.50-19	0.78	15	89.4	33.5	55.9	3	5.6	201	68	132
SPI 6.50-20	0.78	15	91.7	33.5	58.2	3	5.6	205	73	132
SPI 6.50-21	0.78	20	98.9	38.3	60.6	3	5.6	234	75	159
SPI 6.50-22	0.78	20	101.3	38.3	63	3	5.6	238	79	159
SPI 6.50-23	0.78	20	103.7	38.3	65.4	3	5.6	240	82	159
SPI 6.50-24	0.78	20	106.1	38.3	67.8	3	5.6	245	86	159
SPI 6.50-25	0.78	20	108.5	38.3	70.2	3	5.6	247	88	159
SPI 6.50-26	0.78	20	110.8	38.3	72.5	3	5.6	249	90	159
SPI 6.50-27	0.78	20	113.2	38.3	74.9	3	5.6	254	95	159
SPI 6.50-28	0.78	25	116.9	39.6	77.3	3	5.6	265	97	168
SPI 6.50-29	0.78	25	119.3	39.6	79.7	3	5.6	269	101	168
SPI 6.50-30	0.78	25	131.5	39.6	91.9	3	5.6	333	165	168
SPI 6.50-31	0.78	25	133.9	39.6	94.3	3	5.6	335	168	168
SPI 6.50-32	0.78	25	136.3	39.6	96.7	3	5.6	340	172	168
SPI 6.50-33	0.78	25	138.7	39.6	99.1	3	5.6	344	176	168
SPI 6.50-34	0.78	25	141	39.6	101.4	3	5.6	348	181	168
SPI 6.50-35	0.78	30	147.4/138.9	43.5/35	103.8	3	5.6/6.8	375/373	183	192/190
SPI 6.50-36	0.78	30	149.7/141.2	43.5/35	106.2	3	5.6/6.8	375/373	187	192/190

Weights and Dimensions

50 GPM										
Model	PEI	HP	Dimensions (In.)					Weights (lbs.)		
			A	B	C	D	E	Complete Unit	Pump End	Motor
SPI 6.50-37	0.78	30	152.1/143.6	43.5/35	108.6	3	5.6/6.8	384/381	192	192/190
SPI 6.50-38	0.78	30	154.5/146	43.5/35	110.9	3	5.6/6.8	388/386	196	192/190
SPI 6.50-39	0.78	30	156.9/148.4	43.5/35	113.3	3	5.6/6.8	392/390	201	192/190
SPI 6.50-40	0.78	30	159.3/150.7	43.5/35	115.7	3	5.6/6.8	395/392	203	192/190
SPI 6.50-41	0.78	30	161.7/153.1	43.5/35	118.1	3	5.6/6.8	399/397	207	192/190
SPI 6.50-42	0.78	35	168.4/157.5	47.9/37	120.5	3	5.6/6.8	428/412	212	216/201
SPI 6.50-43	0.78	35	170.8/159.9	47.9/37	122.9	3	5.6/6.8	432/417	216	216/201
SPI 6.50-44	0.78	35	173.1/162.2	47.9/37	125.2	3	5.6/6.8	437/421	220	216/201
SPI 6.50-45	0.78	35	175.6/164.6	47.9/37	127.6	3	5.6/6.8	439/423	223	216/201
SPI 6.50-46	0.78	35	177.9/167	47.9/37	130	3	5.6/6.8	443/428	227	216/201
SPI 6.50-47	0.78	35	180.3/169.4	47.9/37	132.4	3	5.6/6.8	448/432	231	216/201
SPI 6.50-48	0.78	35	182.7/171.8	47.9/37	134.8	3	5.6/6.8	452/437	236	216/201
SPI 6.50-49	0.78	40	186.3/175.7/178.7	49.1/38.6/41.6	137.2	3	5.6/6.8/7.6	465/465/522	238	227/227/284
SPI 6.50-50	0.78	40	188.6/178.1/181.1	49.1/38.6/41.6	139.5	3	5.6/6.8/7.6	470/470/527	243	227/227/284
SPI 6.50-51	0.78	40	191/180.5/183.5	49.1/38.6/41.6	141.9	3	5.6/6.8/7.6	474/474/531	247	227/227/284
SPI 6.50-52	0.78	40	193.4/182.9/185.9	49.1/38.6/41.6	144.3	3	5.6/6.8/7.6	478/478/536	251	227/227/284
SPI 6.50-53	0.78	40	195.8/185.3/188.3	49.1/38.6/41.6	146.7	3	5.6/6.8/7.6	483/483/540	256	227/227/284
SPI 6.50-54	0.78	40	198.1/187.6/190.6	49.1/38.6/41.6	149.1	3	5.6/6.8/7.6	485/485/542	258	227/227/284
SPI 6.50-55	0.78	40	200.6/190/193	49.1/38.6/41.6	151.5	3	5.6/6.8/7.6	489/489/547	262	227/227/284

# Wilco-SPI 6.90

Stainless Steel Submersible Well Pumps



## Weights and Dimensions

90 GPM										
Model	PEI	HP	Dimensions (In.)					Weights (lbs.)		
			A	B	C	D	E	Complete Unit	Pump End	Motor
SPI 6.90-01	0.75	1.5	36.6	20.8	15.7	3	3.7	51	15	35
SPI 6.90-02	0.75	3	38.1	22.4	15.7	3	3.7	66	18	49
SPI 6.90-03	0.75	4	41.7	24	17.7	3	3.7	86	20	66
SPI 6.90-04	0.75	5	45.7	25.6	20.1	3	5.6	110	22	88
SPI 6.90-05	0.75	5.5	49.2	26.7	22.5	3	5.6	120	24	96
SPI 6.90-06	0.75	7.5	51.6	26.7	24.9	3	5.6	125	29	96
SPI 6.90-07	0.75	10	57.1	29.8	27.3	3	5.6	141	31	110
SPI 6.90-08	0.75	10	59.5	29.8	29.6	3	5.6	146	35	110
SPI 6.90-09	0.75	10	61.9	29.8	32	3	5.6	148	37	110
SPI 6.90-10	0.75	12.5	65.9	31.5	34.4	3	5.6	161	40	121
SPI 6.90-11	0.75	12.5	68.3	31.5	36.8	3	5.6	165	44	121
SPI 6.90-12	0.75	15	72.7	33.5	39.2	3	5.6	179	46	132
SPI 6.90-13	0.75	15	75.1	33.5	41.6	3	5.6	183	51	132
SPI 6.90-14	0.75	17.5	79.8	35.9	43.9	3	5.6	196	53	143
SPI 6.90-15	0.75	17.5	82.2	35.9	46.3	3	5.6	201	57	143
SPI 6.90-16	0.75	20	87	38.3	48.7	3	5.6	218	60	159
SPI 6.90-17	0.75	20	89.4	38.3	51.1	3	5.6	223	64	159
SPI 6.90-18	0.75	20	91.8	38.3	53.5	3	5.6	225	66	159
SPI 6.90-19	0.75	25	95.5	39.6	55.9	3	5.6	236	68	168
SPI 6.90-20	0.75	25	97.8	39.6	58.2	3	5.6	240	73	168
SPI 6.90-21	0.75	25	100.2	39.6	60.6	3	5.6	243	75	168
SPI 6.90-22	0.75	25	102.6	39.6	63	3	5.6	247	79	168
SPI 6.90-23	0.75	30	108.9/100.4	43.5/35	65.4	3	5.6/6.8	273/271	82	192/190
SPI 6.90-24	0.75	30	111.3/102.8	43.5/35	67.8	3	5.6/6.8	278/276	86	192/190
SPI 6.90-25	0.75	30	113.7/105.2	43.5/35	70.2	3	5.6/6.8	280/278	88	192/190
SPI 6.90-26	0.75	30	116.1/107.6	43.5/35	72.5	3	5.6/6.8	284/282	93	192/190
SPI 6.90-27	0.75	35	122.8/111.9	47.9/37	74.9	3	5.6/6.8	311/295	95	216/201
SPI 6.90-28	0.75	35	125.2/114.3	47.9/37	77.3	3	5.6/6.8	315/300	99	216/201
SPI 6.90-29	0.75	35	127.6/116.7	47.9/37	79.7	3	5.6/6.8	317/302	101	216/201
SPI 6.90-30	0.75	35	139.8/128.9	47.9/37	91.9	3	5.6/6.8	381/366	165	216/201
SPI 6.90-31	0.75	40	143.4/132.9/135.9	49.1/38.6/41.6	94.3	3	5.6/6.8/7.6	397/397/454	170	227/227/284
SPI 6.90-32	0.75	40	145.7/135.2/138.2	49.1/38.6/41.6	96.7	3	5.6/6.8/7.6	399/399/456	172	227/227/284
SPI 6.90-33	0.75	40	148.1/137.6/140.6	49.1/38.6/41.6	99.1	3	5.6/6.8/7.6	403/403/461	176	227/227/284
SPI 6.90-34	0.75	40	150.5/140/143	49.1/38.6/41.6	101.4	3	5.6/6.8/7.6	408/408/465	181	227/227/284
SPI 6.90-35	0.75	40	152.9/142.4/145.4	49.1/38.6/41.6	103.8	3	5.6/6.8/7.6	412/412/470	185	227/227/284
SPI 6.90-36	0.75	40	155.3/144.8/147.8	49.1/38.6/41.6	106.2	3	5.6/6.8/7.6	417/417/474	190	227/227/284

Weights and Dimensions

90 GPM										
Model	PEI	HP	Dimensions (In.)					Weights (lbs.)		
			A	B	C	D	E	Complete Unit	Pump End	Motor
SPI 6.90-37	0.75	50	161.6/150.3/152.5	53/41.7/43.9	108.6	3	5.6/6.8/7.6	434/441/496	192	243/249/304
SPI 6.90-38	0.75	50	164/152.7/154.9	53/41.7/43.9	110.9	3	5.6/6.8/7.6	439/445/500	196	243/249/304
SPI 6.90-39	0.75	50	166.4/155.1/157.3	53/41.7/43.9	113.3	3	5.6/6.8/7.6	443/450/505	201	243/249/304
SPI 6.90-40	0.75	50	168.7/157.4/159.6	53/41.7/43.9	115.7	3	5.6/6.8/7.6	448/454/509	205	243/249/304
SPI 6.90-41	0.75	50	171.1/159.8/162	53/41.7/43.9	118.1	3	5.6/6.8/7.6	452/459/514	209	243/249/304
SPI 6.90-42	0.75	50	173.5/162.2/164.4	53/41.7/43.9	120.5	3	5.6/6.8/7.6	454/461/516	212	243/249/304
SPI 6.90-43	0.75	60	167.7/170.2	44.8/47.3	122.9	3	6.8/7.6	496/551	216	280/335
SPI 6.90-44	0.75	60	170.1/172.5	44.8/47.3	125.2	3	6.8/7.6	500/556	220	280/335
SPI 6.90-45	0.75	60	172.5/174.9	44.8/47.3	127.6	3	6.8/7.6	505/560	225	280/335
SPI 6.90-46	0.75	60	174.8/177.3	44.8/47.3	130	3	6.8/7.6	507/562	227	280/335
SPI 6.90-47	0.75	60	177.2/179.7	44.8/47.3	132.4	3	6.8/7.6	511/567	231	280/335
SPI 6.90-48	0.75	60	179.6/182	44.8/47.3	134.8	3	6.8/7.6	516/571	236	280/335
SPI 6.90-49	0.75	60	182/184.4	44.8/47.3	137.2	3	6.8/7.6	520/575	240	280/335
SPI 6.90-50	0.75	60	184.4/186.8	44.8/47.3	139.5	3	6.8/7.6	525/580	245	280/335

### Weights and Dimensions

150 GPM										
Model	PEI	HP	Dimensions (In)					Weights (lbs)		
			A	B	C	D	E	Complete Unit	Pump End	Motor
SPI 6.150-01	0.79	2	40.3	23.2	17.1	3	3.7	75	15	60
SPI 6.150-02	0.79	4	42.4	24.4	18.1	3	3.7	99	20	79
SPI 6.150-03	0.79	5.5	47.4	25.6	21.8	3	5.6	112	24	88
SPI 6.150-04	0.79	7.5	52.2	26.7	25.6	3	5.6	125	29	96
SPI 6.150-05	0.79	10	59.1	29.8	29.3	3	5.6	143	33	110
SPI 6.150-06	0.79	12.5	64.5	31.5	33	3	5.6	159	37	121
SPI 6.150-07	0.79	12.5	68.3	31.5	36.8	3	5.6	163	42	121
SPI 6.150-08	0.79	15	74	33.5	40.5	3	5.6	179	46	132
SPI 6.150-09	0.79	17.5	80.1	35.9	44.3	3	5.6	194	51	143
SPI 6.150-10	0.79	17.5	83.9	35.9	48	3	5.6	198	55	143
SPI 6.150-11	0.79	20	90	38.3	51.7	3	5.6	218	60	159
SPI 6.150-12	0.79	25	95.1	39.6	55.5	3	5.6	231	64	168
SPI 6.150-13	0.79	25	98.8	39.6	59.2	3	5.6	236	68	168
SPI 6.150-14	0.79	25	102.6	39.6	63	3	5.6	240	73	168
SPI 6.150-15	0.79	30	110.2/101.7	43.5/35	66.7	3	5.6/6.8	271/269	79	192/190
SPI 6.150-16	0.79	30	114/105.5	43.5/35	70.4	3	5.6/6.8	276/273	84	192/190
SPI 6.150-17	0.79	30	117.7/109.2	43.5/35	74.2	3	5.6/6.8	280/278	88	192/190
SPI 6.150-18	0.79	35	125.8/114.9	47.9/37	77.9	3	5.6/6.8	309/293	93	216/201
SPI 6.150-19	0.79	35	129.6/118.7	47.9/37	81.7	3	5.6/6.8	313/298	97	216/201
SPI 6.150-20	0.79	35	133.3/122.4	47.9/37	85.4	3	5.6/6.8	317/302	101	216/201
SPI 6.150-21	0.79	40	138.2/127.7/130.7	49.1/38.6/41.6	89.1	3	5.6/6.8/7.6	333/333/390	106	227/227/284
SPI 6.150-22	0.79	40	142/131.5/134.4	49.1/38.6/41.6	92.9	3	5.6/6.8/7.6	337/337/395	110	227/227/284
SPI 6.150-23	0.79	40	145.7/135.2/138.2	49.1/38.6/41.6	96.6	3	5.6/6.8/7.6	342/342/399	115	227/227/284
SPI 6.150-24	0.79	50	153.4/142.1/144.3	53/41.7/43.9	100.4	3	5.6/6.8/7.6	362/368/423	119	243/249/304
SPI 6.150-25	0.79	50	157.1/145.8/148	53/41.7/43.9	104.1	3	5.6/6.8/7.6	366/373/428	123	243/249/304
SPI 6.150-26	0.79	50	160.9/149.6/151.8	53/41.7/43.9	107.8	3	5.6/6.8/7.6	370/377/432	128	243/249/304
SPI 6.150-27	0.79	50	164.6/153.3/155.5	53/41.7/43.9	111.6	3	5.6/6.8/7.6	375/381/437	132	243/249/304
SPI 6.150-28	0.79	50	168.3/157/159.3	53/41.7/43.9	115.3	3	5.6/6.8/7.6	381/388/443	139	243/249/304
SPI 6.150-29	0.79	60	163.9/166.3	44.8/47.3	119.1	3	6.8/7.6	423/478	143	280/335
SPI 6.150-30	0.79	60	177.5/179.9	44.8/47.3	132.6	3	6.8/7.6	500/556	220	280/335
SPI 6.150-31	0.79	60	181.2/183.7	44.8/47.3	136.4	3	6.8/7.6	507/562	227	280/335
SPI 6.150-32	0.79	60	185/187.4	44.8/47.3	140.1	3	6.8/7.6	511/567	231	280/335
SPI 6.150-33	0.79	60	188.7/191.1	44.8/47.3	143.9	3	6.8/7.6	518/573	238	280/335
SPI 6.150-34	0.79	60	192.4/194.9	44.8/47.3	147.6	3	6.8/7.6	525/580	245	280/335
SPI 6.150-35	0.79	70	199.3/202	48/50.6	151.3	3	6.8/7.6	553/624	249	304/375
SPI 6.150-36	0.79	70	203/205.7	48/50.6	155.1	3	6.8/7.6	560/631	256	304/375



**Weights and Dimensions**

<b>150 GPM</b>										
Model	PEI	HP	Dimensions (In)					Weights (lbs)		
			A	B	C	D	E	Complete Unit	Pump End	Motor
<b>SPI 6.150-37</b>	0.79	70	206.8/209.4	48/50.6	158.8	3	6.8/7.6	564/635	260	304/375
<b>SPI 6.150-38</b>	0.79	70	210.5/213.2	48/50.6	162.6	3	6.8/7.6	571/642	267	304/375
<b>SPI 6.150-39</b>	0.79	70	214.3/216.9	48/50.6	166.3	3	6.8/7.6	578/648	273	304/375

Weights and Dimensions

180 GPM									
Model	HP	Dimensions (In.)					Weights (lbs.)		
		A	B	C	D	E	Complete Unit	Pump End	Motor
SPI 6.180-01	3	42.6	17.1	23.2	3	3.7	88	29	60
SPI 6.180-02	7.5	44.8	18.1	24.4	3	3.7	112	33	79
SPI 6.180-03	10	51.7	21.8	29.8	3	5.6	126	37	88
SPI 6.180-04	12.5	57	25.6	31.5	3	5.6	139	43	96
SPI 6.180-05	15	65.2	29.3	35.9	3	5.6	152	42	110
SPI 6.180-06	17.5	71.3	33	38.3	3	5.6	168	46	121
SPI 6.180-07	20	76.4	36.8	39.6	3	5.6	174	53	121
SPI 6.180-08	25	80.1	40.5	39.6	3	5.6	190	57	132
SPI 6.180-09	25	87.8/79.3	44.3	43.5/35	3	5.6/6.8	282/284	90/95	192/190
SPI 6.180-10	30	95.9/85	48	47.9/37	3	5.6/6.8	287/284	90/95	192/190
SPI 6.180-11	35	99.6/88.7	51.7	47.9/37	3	5.6/6.8	291/289	90/95	192/190
SPI 6.180-12	40	104.6/94.1/97	55.5	49.1/38.6/41.6	3	5.6/6.8/7.6	317/302	101/99	216/201
SPI 6.180-13	40	108.3/97.8/100.8	59.2	49.1/38.6/41.6	3	5.6/6.8/7.6	324/322	108/99	216/201
SPI 6.180-14	40	116/104.7/106.9	63	53/41.7/43.9	3	5.6/6.8/7.6	328/313	112/115	216/201
SPI 6.180-15	50	119.7/108.4/110.6	66.7	53/41.7/43.9	3	5.6/6.8/7.6	333/333/390	106/106/234	227/227/284
SPI 6.180-16	50	123.5/112.2/114.4	70.4	53/41.7/43.9	3	5.6/6.8/7.6	337/337/395	110/110/238	227/227/284
SPI 6.180-17	60	119/121.5	74.2	44.8/47.3	3	6.8/7.6	342/342/399	115/115/243	227/227/284
SPI 6.180-18	60	122.8/125.2	77.9	44.8/47.3	3	6.8/7.6	362/368/423	119/119/119	243/249/304
SPI 6.180-19	60	126.5/128.9	81.7	44.8/47.3	3	6.8/7.6	366/373/428	123/123/123	243/249/304
SPI 6.180-20	60	133.3/136	85.4	48/50.6	3	6.8/7.6	370/377/432	128/128/128	243/249/304
SPI 6.180-21	60	138.3/139.8	89.1	49.2/50.6	3	6.8/7.6	375/381/437	132/132/132	243/249/304
SPI 6.180-22	60	142.1/143.5	92.9	49.2/50.6	3	6.8/7.6	381/388/443	139/139/139	243/249/304
SPI 6.180-23	70	145.8/147.2	96.6	49.2/50.6	3	6.8/7.6	423/478	143/143	280/335
SPI 6.180-24	70	149.6/151	100.4	49.2/50.6	3	6.8/7.6	500/556	220/220	280/335
SPI 6.180-25	70	153.3/154.7	104.1	49.2/50.6	3	6.8/7.6	507/562	227/227	280/335
SPI 6.180-26	75	157/158.5	107.8	49.2/50.6	3	6.8/7.6	511/567	231/231	280/335

Weights and Dimensions

230 GPM										
Model	PEI	HP	Dimensions (In.)					Weights (lbs.)		
			A	B	C	D	E	Complete Unit	Pump End	Motor
SPI 6.230-01	0.88	5	40.6	25.6	15	4	5.6	104	15	88
SPI 6.230-02	0.88	7.5	46.1	26.7	19.4	4	5.6	118	22	96
SPI 6.230-03	0.88	10	53.7	29.8	23.9	4	5.6	137	26	110
SPI 6.230-04	0.88	12.5	59.8	31.5	28.3	4	5.6	154	33	121
SPI 6.230-05	0.88	15	68.5	35.9	32.7	4	5.6	183	40	143
SPI 6.230-06	0.88	20	75.4	38.3	37.1	4	5.6	203	44	159
SPI 6.230-07	0.88	25	81.1	39.6	41.5	4	5.6	218	51	168
SPI 6.230-08	0.88	25	85.5	39.6	45.9	4	5.6	225	57	168
SPI 6.230-09	0.88	30	93.9/85.4	43.5/35	50.3	4	5.6/6.8	254/251	62	192/190
SPI 6.230-10	0.88	35	102.6/91.7	47.9/37	54.7	4	5.6/6.8	284/269	68	216/201
SPI 6.230-11	0.88	35	107/96.1	47.9/37	59.1	4	5.6/6.8	291/276	75	216/201
SPI 6.230-12	0.88	40	112.6/102.1/105.1	49.1/38.6/41.6	63.5	4	5.6/6.8/7.6	306/306/364	79	227/227/284
SPI 6.230-13	0.88	40	117/106.5/109.5	49.1/38.6/41.6	68	4	5.6/6.8/7.6	313/313/370	86	227/227/284
SPI 6.230-14	0.88	50	125.4/114.1/116.3	53/41.7/43.9	72.4	4	5.6/6.8/7.6	335/342/397	93	243/249/304
SPI 6.230-15	0.88	50	129.8/118.5/120.7	53/41.7/43.9	76.8	4	5.6/6.8/7.6	340/346/401	97	243/249/304
SPI 6.230-16	0.88	50	134.2/122.9/125.1	53/41.7/43.9	81.2	4	5.6/6.8/7.6	346/353/408	104	243/249/304
SPI 6.230-17	0.88	60	130.4/132.9	44.8/47.3	85.6	4	6.8/7.6	388/443	108	280/335
SPI 6.230-18	0.88	60	134.8/137.3	44.8/47.3	90	4	6.8/7.6	395/450	115	280/335
SPI 6.230-19	0.88	60	139.3/141.7	44.8/47.3	94.4	4	6.8/7.6	401/456	121	280/335
SPI 6.230-20	0.88	70	146.8/149.4	48/50.6	98.8	4	6.8/7.6	430/500	126	304/375
SPI 6.230-21	0.88	75	152.4/153.9	49.2/50.6	103.2	4	6.8/7.6	437/507	132	304/375
SPI 6.230-22	0.88	75	156.9/158.3	49.2/50.6	107.6	4	6.8/7.6	443/514	139	304/375
SPI 6.230-23	0.88	75	161.3/162.7	49.2/50.6	112	4	6.8/7.6	448/518	143	304/375
SPI 6.230-24	0.88	75	165.7/167.1	49.2/50.6	116.5	4	6.8/7.6	454/525	150	304/375

### Weights and Dimensions

300 GPM										
Model	PEI	HP	Dimensions (In)					Weights (lbs)		
			A	B	C	D	E	Complete Unit	Pump End	Motor
SPI 6.300-01	0.87	5	40.6	25.6	15	4	5.6	104	15	88
SPI 6.300-02	0.87	7.5	46.1	26.7	19.4	4	5.6	118	22	96
SPI 6.300-03	0.87	10	55.4	31.5	23.9	4	5.6	148	26	121
SPI 6.300-04	0.87	15	61.8	33.5	28.3	4	5.6	165	33	132
SPI 6.300-05	0.87	20	71	38.3	32.7	4	5.6	198	40	159
SPI 6.300-06	0.87	25	76.7	39.6	37.1	4	5.6	212	44	168
SPI 6.300-07	0.87	30	85/76.5	43.5/35	41.5	4	5.6/6.8	243/240	51	192/190
SPI 6.300-08	0.87	30	89.4/80.9	43.5/35	45.9	4	5.6/6.8	249/247	57	192/190
SPI 6.300-09	0.87	35	98.2/87.3	47.9/37	50.3	4	5.6/6.8	278/262	62	216/201
SPI 6.300-10	0.87	40	103.8/93.3/96.3	49.1/38.6/41.6	54.7	4	5.6/6.8/7.6	295/295/353	68	227/227/284
SPI 6.300-11	0.87	40	108.2/97.7/100.7	49.1/38.6/41.6	59.1	4	5.6/6.8/7.6	302/302/359	75	227/227/284
SPI 6.300-12	0.87	50	116.6/105.3/107.5	53/41.7/43.9	63.5	4	5.6/6.8/7.6	322/328/384	79	243/249/304
SPI 6.300-13	0.87	50	121/109.7/111.9	53/41.7/43.9	68	4	5.6/6.8/7.6	328/335/390	86	243/249/304
SPI 6.300-14	0.87	60	117.2/119.6	44.8/47.3	72.4	4	6.8/7.6	373/428	93	280/335
SPI 6.300-15	0.87	60	121.6/124.1	44.8/47.3	76.8	4	6.8/7.6	377/432	97	280/335
SPI 6.300-16	0.87	60	126/128.5	44.8/47.3	81.2	4	6.8/7.6	384/439	104	280/335
SPI 6.300-17	0.87	70	133.5/136.2	48/50.6	85.6	4	6.8/7.6	414/485	110	304/375
SPI 6.300-18	0.87	75	139.2/140.6	49.2/50.6	90	4	6.8/7.6	419/489	115	304/375
SPI 6.300-19	0.87	75	143.6/145	49.2/50.6	94.4	4	6.8/7.6	425/496	121	304/375
SPI 6.300-20	0.87	75	148/149.4	49.2/50.6	98.8	4	6.8/7.6	432/503	128	304/375
SPI 6.300-21	0.87	80	156	52.8	103.2	4	7.6	540	132	408

## Electrical Data

6" R-Series Motors									
HP	kW	PH (~)	Voltage	FL Amps	SF Amps	Start Amps	Cos $\Phi$	Eff.	Article Number
5	4	3	208/230	17	19.6	-	0.84	70%	2761123
			460	8.4	9.7	46.2	0.85	71%	2761124
7½	5.5	3	208/230	22.5	25.9	-	0.85	72%	2761125
			460	11.3	13	62.2	0.85	72%	2761126
10	7.5	3	208/230	28.5	32.8	-	0.85	78%	2761127
			460	14.2	16.3	78.1	0.85	78%	2761128
15	11	3	208/230	39.2	45.1	-	0.86	82%	2761129
			460	19.6	22.5	107.8	0.86	81%	2761130
20	15	3	208/230	54.8	63	-	0.85	81%	2761131
			460	27.3	31.4	150.2	0.86	80%	2761132
25	18.5	3	208/230	69.2	79.6	-	0.84	80%	2761133
			460	34.5	39.7	189.8	0.83	80%	2761134
30	22	3	208/230	80.3	92.4	-	0.85	81%	2761135
			460	40.1	46.1	220.6	0.84	82%	2761136
40	30	3	460	53.4	61.4	293.7	0.83	82%	2761137
50	37	3	460	66.6	76.6	366.3	0.85	82%	2761138
60	45	3	460	74.7	85.9	379	0.89	85%	2711652

6" AG / Mining Series Motors									
HP	kW	PH (~)	Voltage	FL Amps	SF Amps	Cos $\Phi$	Eff.	Article Number	
5	4	3	208/230	15.9	16.8	0.83	74%	2707636	
			460	7.8	8.9	0.85	76%	2707637	
7½	5.5	3	208/230	23.5	26.2	0.82	72%	2707638	
			460	11	12.6	0.82	78%	2707639	
10	7.5	3	208/230	29	32.8	0.81	80%	2707640	
			460	14.9	16.8	0.82	77%	2707641	
15	11	3	208/230	39.8	47.2	0.85	82%	2707642	
			460	21	24	0.81	80%	2707643	
20	15	3	208/230	54.5	61.5	0.85	82%	2707644	
			460	27.2	30.6	0.84	81%	2707645	
25	18.5	3	208/230	67.5	76	0.82	84%	2707646	
			460	33.8	38	0.84	82%	2707647	
30	22	3	208/230	80.2	91	0.82	85%	2707648	
			460	40.2	45.5	0.83	83%	2707649	
40	30	3	460	53	61.8	0.84	85%	2707650	
50	37	3	460	72	76	0.83	85%	2707651	

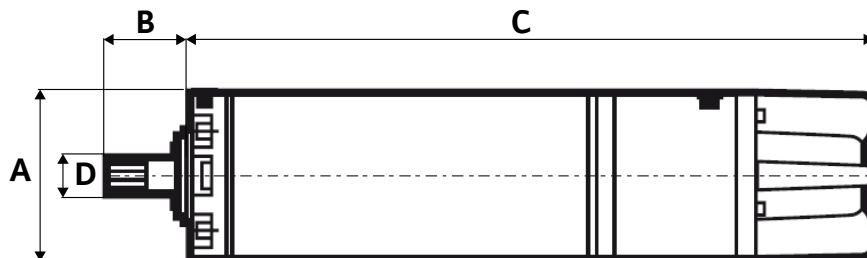
## Dimensional Data

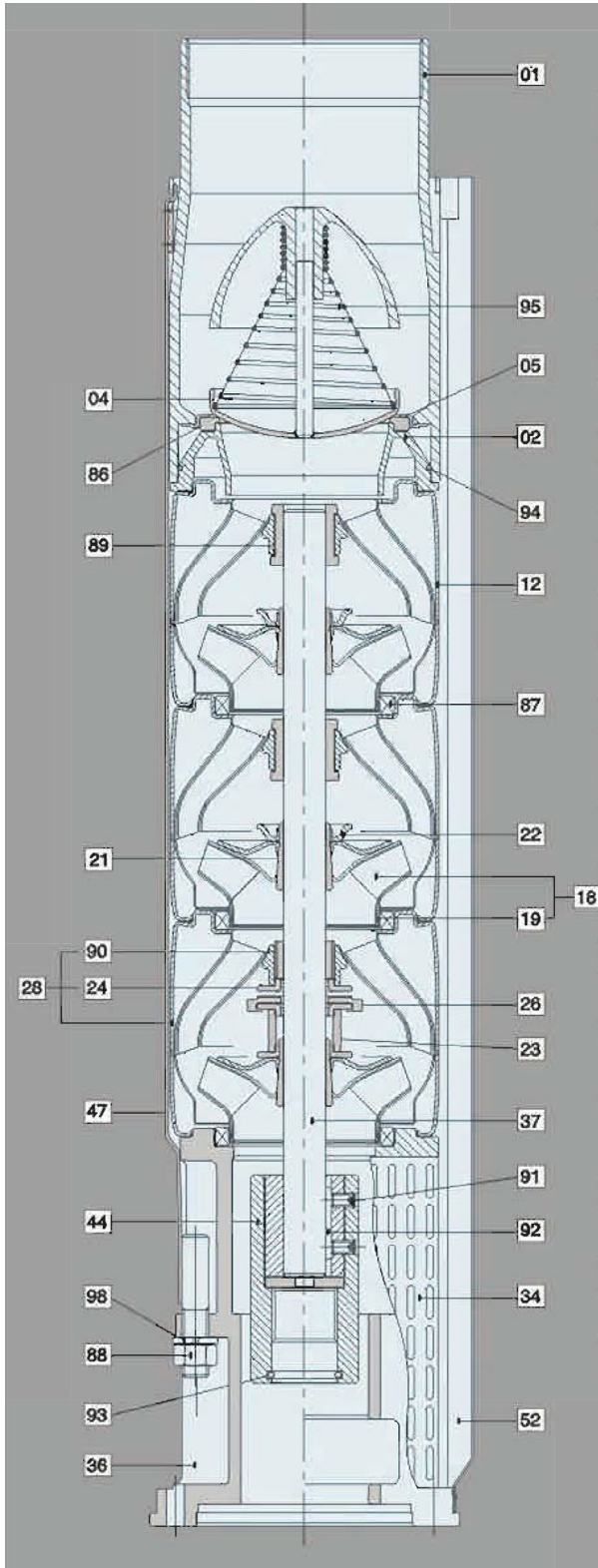
### 6" R Series Motors

HP	kW	PH	A	B	C	D	Weight (lb)
5	4	3	5.59 in	2.87 in	25.5 in	1 in	96.8
7.5	5.5	3	5.59 in	2.87 in	26.7 in	1 in	103.4
10	7.5	3	5.59 in	2.87 in	29.8 in	1 in	116.6
15	11	3	5.59 in	2.87 in	33.5 in	1 in	134.2
20	15	3	5.59 in	2.87 in	38.3 in	1 in	158.4
25	18.5	3	5.59 in	2.87 in	39.6 in	1 in	176
30	22	3	5.59 in	2.87 in	43.5 in	1 in	189.2
40	30	3	5.59 in	2.87 in	49.1 in	1 in	228.8
50	37	3	5.59 in	2.87 in	53.0 in	1 in	244.2
60	45	3	5.59 in	2.87 in	59.0 in	1 in	265

### 6" AG / Mining Series Motors

HP	kW	PH (~)	A	B	C	D	Weight (lbs)
5	4	3	5.47 in	2.87 in	21.2 in	1 in	70.4
7½	5.5	3	5.47 in	2.87 in	22.4 in	1 in	74.8
10	7.5	3	5.47 in	2.87 in	23.5 in	1 in	79.2
15	11	3	5.47 in	2.87 in	27.5 in	1 in	92.4
20	15	3	5.47 in	2.87 in	29.8 in	1 in	105.6
25	18.5	3	5.47 in	2.87 in	32.8 in	1 in	143
30	22	3	5.47 in	2.87 in	35.2 in	1 in	154
40	30	3	5.47 in	2.87 in	40.7 in	1 in	198
50	37	3	5.47 in	2.87 in	45.0 in	1 in	215





Pos.	Components	Material	Standard
01	Discharge	Stainless Steel	304
02	Lower Valve Seat Retainer	Stainless Steel	304
04	Valve Cup	Stainless Steel	304
05	Upper Valve Seat Retainer	Stainless Steel	304
12	Diffuser	Stainless Steel	304
18	Impeller	Stainless Steel	304
19	Ring of Impeller	Stainless Steel	304
21	Split Cone	Stainless Steel	304
22	Split Cone Nut	Stainless Steel	304
23	Nut for Stop Ring	Stainless Steel	304
24	Stop Ring	Stainless Steel	304
26	Spacing Washer for Stop Ring	Carbon/Graphite/PTFE	
28	Bottom Diffuser	Stainless Steel	304
34	Strainer	Stainless Steel	304
36	Suction Interconnector	Stainless Steel	304
37	Pump Shaft	Stainless Steel	431
44	Coupling	Stainless Steel	304
47	Strap	Stainless Steel	304
52	Cable Guard	Stainless Steel	304
86	Valve Seat	NBR	
87	Neck Ring	SUS304+NBR	
88	Nut	Stainless Steel	304
89	Bearing	NBR	
90	Bearing	NBR+SUS304	
91	Screw	Stainless Steel	304
92	Key	Stainless Steel	304
93	O-Ring	NBR	
94	O-Ring	NBR	
95	Spring	Stainless Steel	304
98	Spring Washer	Stainless Steel	304

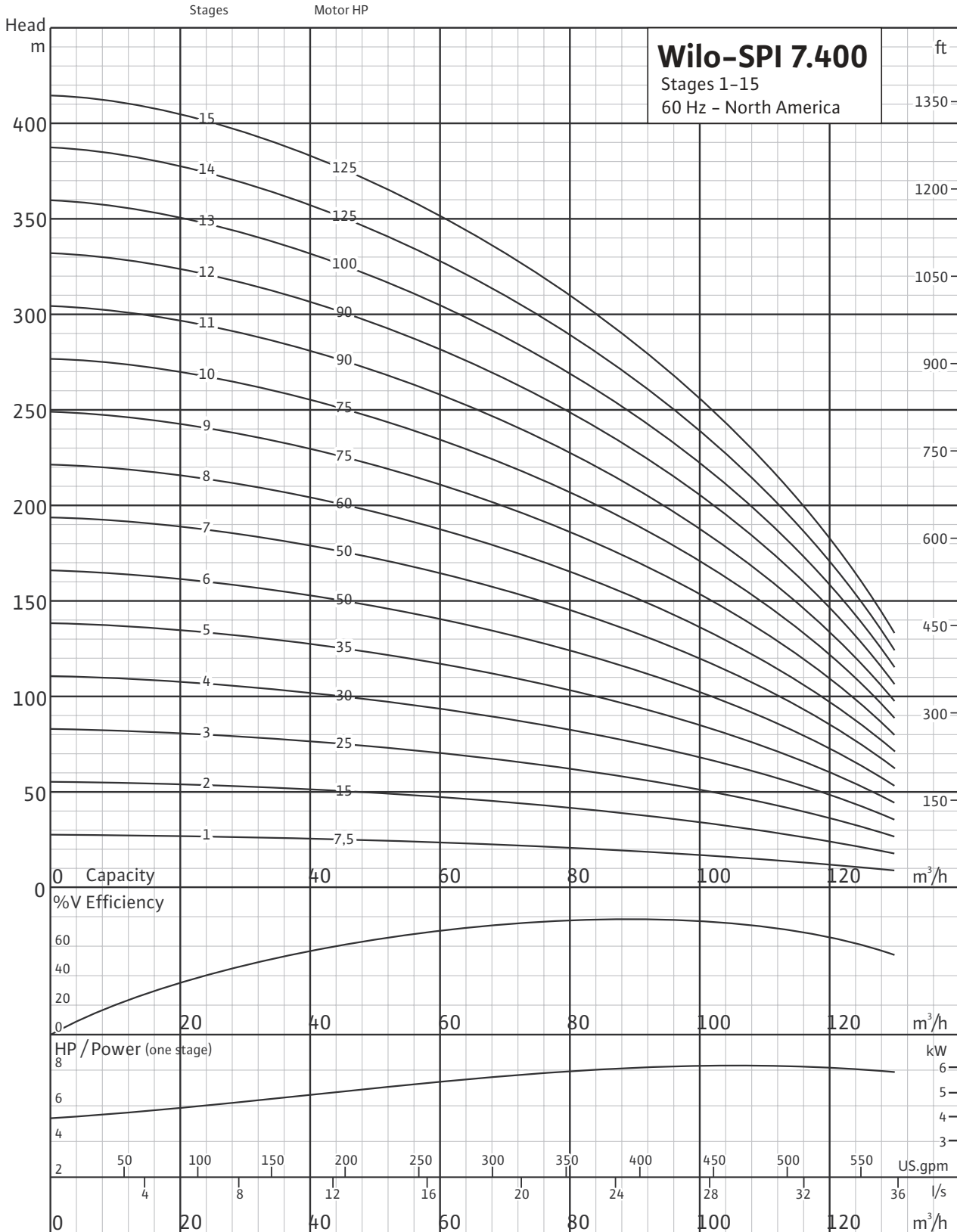
\*AISI 316 Stainless Steel Pumps are available on request.

# Wilo-SPI 7.400

Stainless Steel Submersible Well Pumps



## Stages 1-15



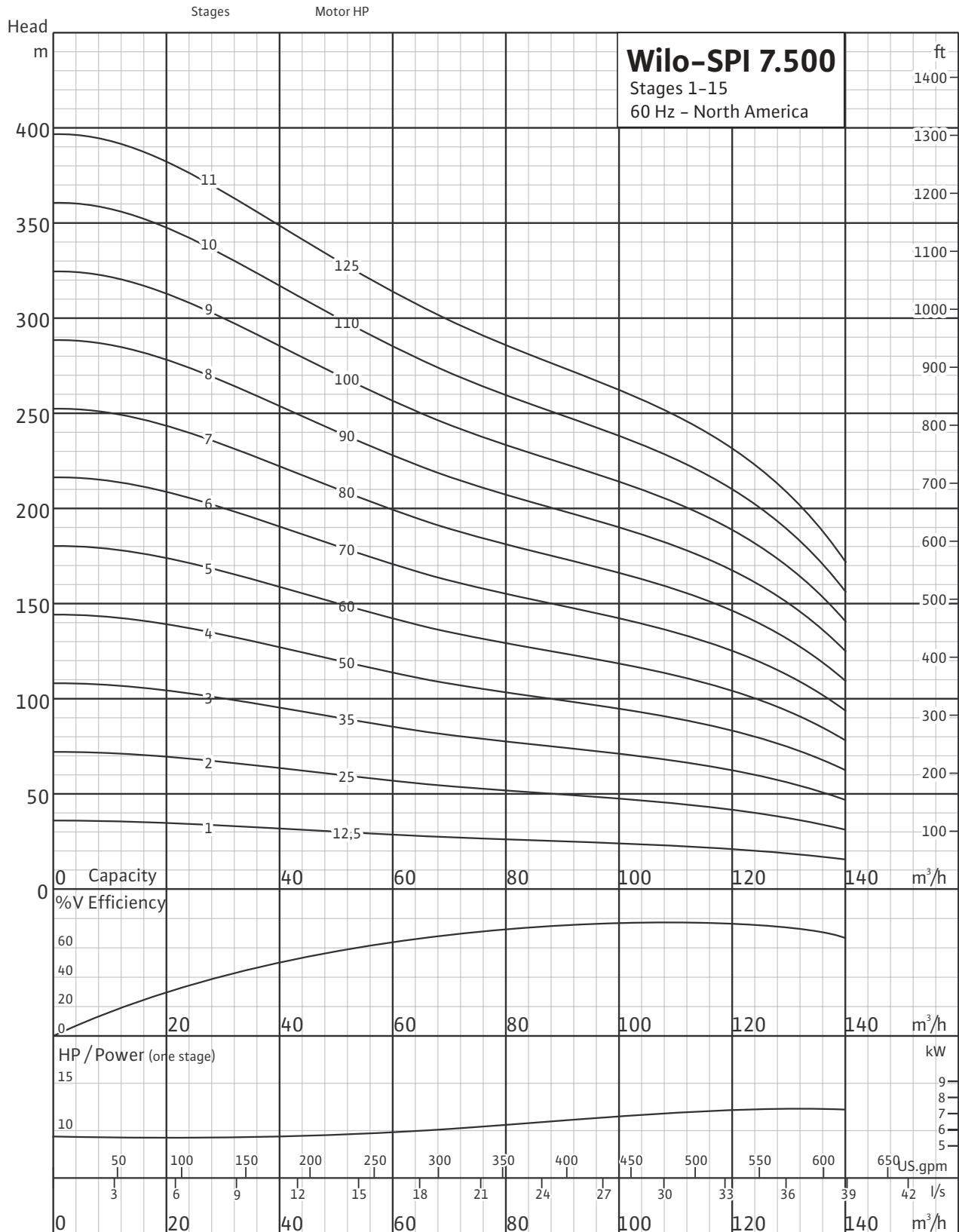


# Wilo-SPI 7.500

## Stainless Steel Submersible Well Pumps



### Stages 1-15

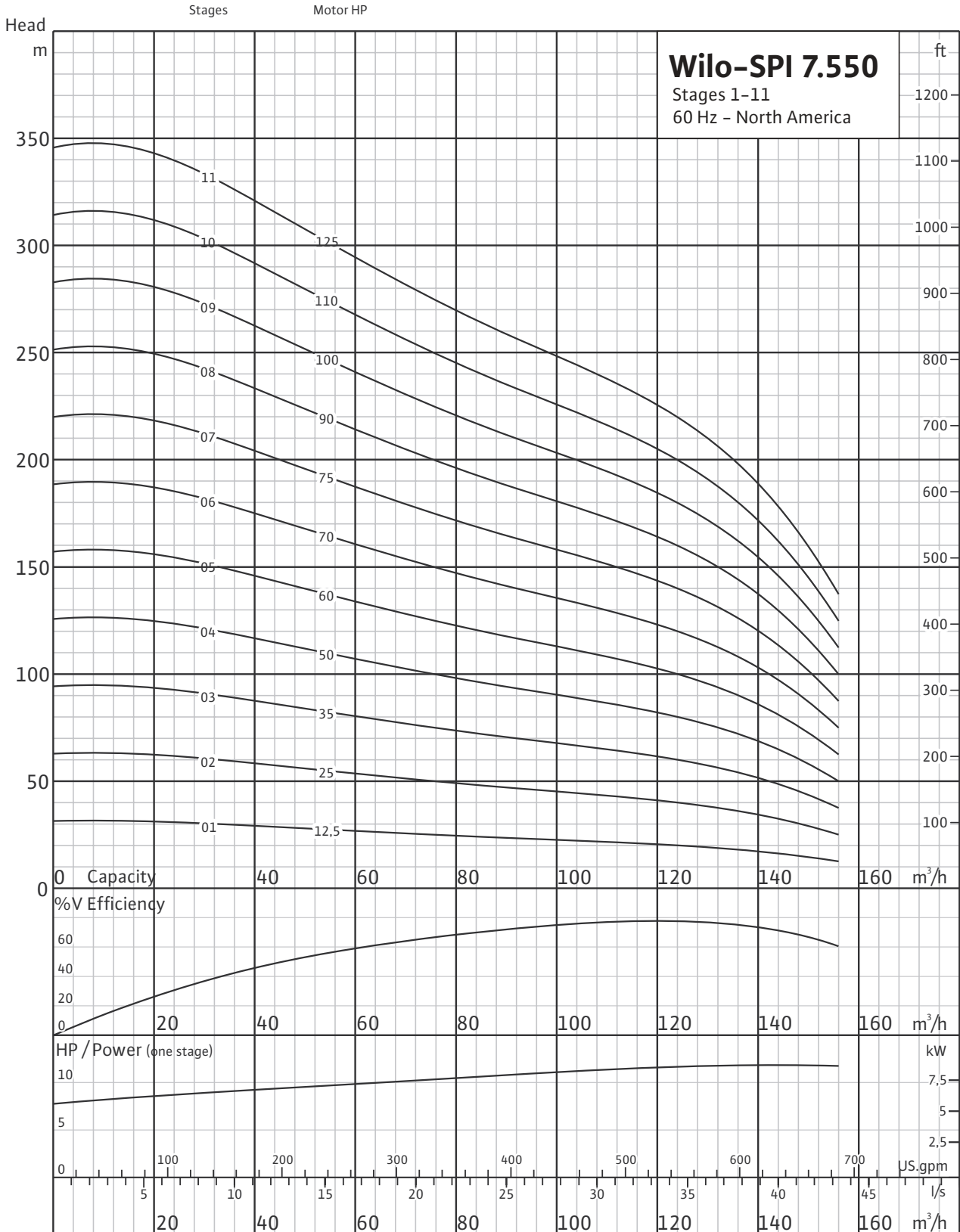


# Wilо-SPI 7.550

Stainless Steel Submersible Well Pumps



## Stages 1-11



**Weights and Dimensions**

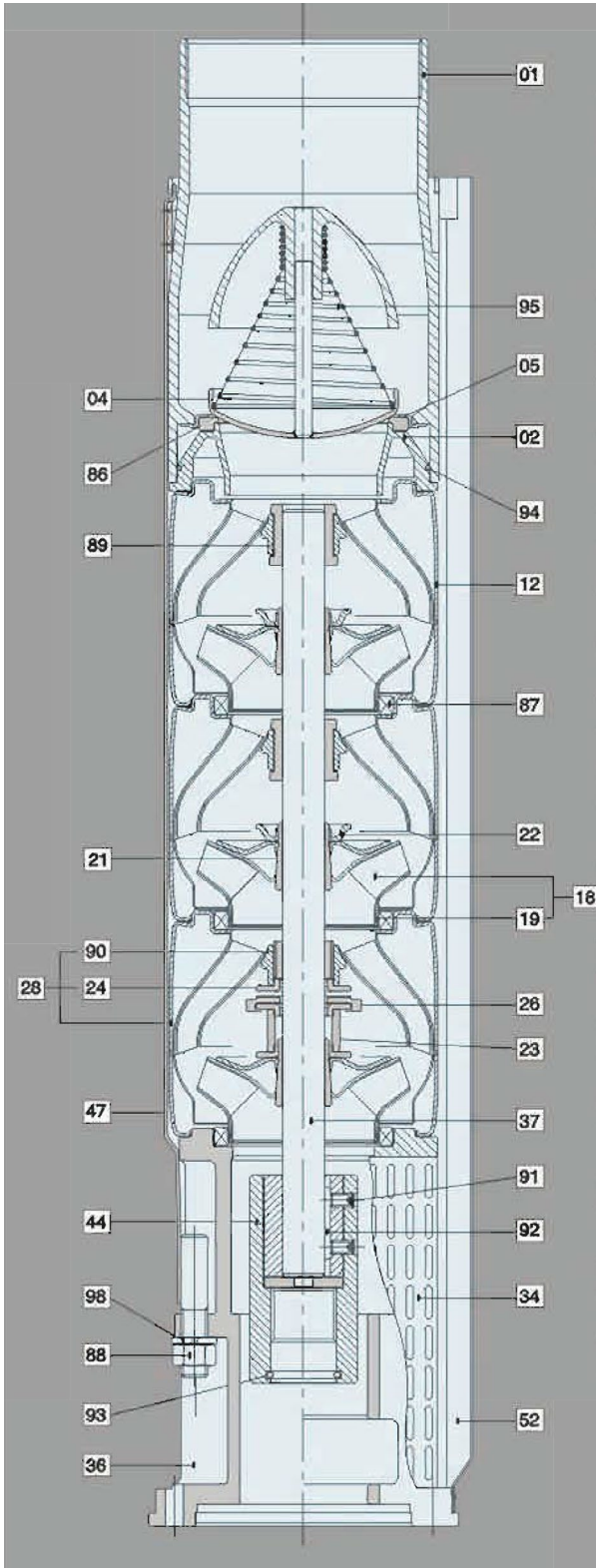
<b>400 GPM</b>									
Model	HP	Dimensions (In.)					Weights (lbs.)		
		A	B	C	D	E	Complete Unit	Pump End	Motor
<b>SPI 7.400-01</b>	7.5	49.2	26.7	22.5	5	5.6	153	57	96
<b>SPI 7.400-02</b>	15	61	33.5	27.5	5	5.6	198	66	132
<b>SPI 7.400-03</b>	25	72.2	39.6	32.6	5	5.6	243	75	168
<b>SPI 7.400-04</b>	30	81.1/72.6	43.5/35	37.6	5	5.6/6.8	276/273	84	192/190
<b>SPI 7.400-05</b>	35	90.6/79.6	47.9/37	42.6	5	5.6/6.8	309/293	93	216/201
<b>SPI 7.400-06</b>	50	100.7/89.4/91.6	53/41.7/43.9	47.7	5	5.6/6.8/7.6	344/351/406	101	243/249/304
<b>SPI 7.400-07</b>	50	105.7/94.4/96.7	53/41.7/43.9	52.7	5	5.6/6.8/7.6	353/359/414	110	243/249/304
<b>SPI 7.400-08</b>	60	102.6/105	44.8/47.3	57.8	5	6.8/7.6	399/454	119	280/335
<b>SPI 7.400-09</b>	75	112/113.4	49.2/50.6	62.8	5	6.8/7.6	432/503	128	304/375
<b>SPI 7.400-10</b>	75	117/118.5	49.2/50.6	67.8	5	6.8/7.6	441/511	137	304/375
<b>SPI 7.400-11</b>	90	126.7	53.8	72.9	5	7.6	556	146	410
<b>SPI 7.400-12</b>	90	131.7	53.8	77.9	5	7.6	564	154	410
<b>SPI 7.400-13</b>	100	137.7	54.8	83	5	7.6	593	163	430
<b>SPI 7.400-14</b>	125	148.5	60.5	88	5	7.6	639	172	467
<b>SPI 7.400-15</b>	125	153.5	60.5	93	5	7.6	648	181	467

Weights and Dimensions

500 GPM									
Model	HP	Dimensions (In.)					Weights (lbs.)		
		A	B	C	D	E	Complete Unit	Pump End	Motor
SPI 7.500-01	10	54	31.5	22.5	5	5.6	179	57	121
SPI 7.500-02	25	67.1	39.6	27.5	5	5.6	234	66	168
SPI 7.500-03	35	80.5/69.6	47.9/37	32.6	5	5.6/6.8	291/276	75	216/201
SPI 7.500-04	50	90.6/79.3/81.5	53/41.7/43.9	37.6	5	5.6/6.8/7.6	326/333/388	84	243/249/304
SPI 7.500-05	60	87.5/89.9	44.8/47.3	42.6	5	6.8/7.6	373/428	93	280/335
SPI 7.500-06	70	95.6/98.3	48/50.6	47.7	5	6.8/7.6	406/476	101	304/375
SPI 7.500-07	80	105.5	52.8	52.7	5	7.6	518	110	408
SPI 7.500-08	90	111.5	53.8	57.8	5	7.6	529	119	410
SPI 7.500-09	100	117.6	54.8	62.8	5	7.6	558	128	430
SPI 7.500-10	110	125.7	57.9	67.8	5	7.6	600	137	463
SPI 7.500-11	125	133.3	60.5	72.9	5	7.6	613	146	467
SPI 7.500-12	150	138.4	60.5	77.9	5	7.6	622	154	467
SPI 7.500-13	150	143.4	60.5	83	5	7.6	631	163	467

Weights and Dimensions

550 GPM									
Model	HP	Dimensions (mm)					Weights (lbs.)		
		A	B	C	D	E	Complete Unit	Pump End	Motor
SPI 07.550-01	12.5	54	31.5	22.5	5	5.6	179	57	121
SPI 7.550-02	25	67.1	39.6	27.5	5	5.6	234	66	168
SPI 7.550-03	35	80.5/69.6	47.9/37	32.6	5	5.6/6.8	291/276	75	216/201
SPI 7.550-04	50	90.6/79.3/81.5	53/41.7/43.9	37.6	5	5.6/6.8/7.6	326/333/388	84	243/249/304
SPI 7.550-05	60	87.5/89.9	44.8/47.3	42.6	5	6.8/7.6	373/428	93	127/152
SPI 7.550-06	70	95.6/98.3	48/50.6	47.7	5	6.8/7.6	406/476	101	138/170
SPI 7.550-07	75	105.5	52.8	52.7	5	7.6	518	110	408
SPI 7.550-08	90	111.5	53.8	57.8	5	7.6	529	119	410
SPI 7.550-09	100	117.6	54.8	62.8	5	7.6	558	128	430
SPI 7.550-10	110	125.7	57.9	67.8	5	7.6	600	137	463
SPI 7.550-11	125	133.3	60.5	72.9	5	7.6	613	146	467
SPI 7.550-12	125	138.4	60.5	77.9	5	7.6	622	154	467
SPI 7.550-13	150	143.4	60.5	83	5	7.6	631	163	467



Pos.	Components	Material	Standard
01	Discharge	Stainless Steel	304
02	Lower Valve Seat Retainer	Stainless Steel	304
04	Valve Cup	Stainless Steel	304
05	Upper Valve Seat Retainer	Stainless Steel	304
12	Diffuser	Stainless Steel	304
18	Impeller	Stainless Steel	304
19	Ring of Impeller	Stainless Steel	304
21	Split Cone	Stainless Steel	304
22	Split Cone Nut	Stainless Steel	304
23	Nut for Stop Ring	Stainless Steel	304
24	Stop Ring	Stainless Steel	304
26	Spacing Washer for Stop Ring	Carbon/ Graphite/PTFE	
28	Bottom Diffuser	Stainless Steel	304
34	Strainer	Stainless Steel	304
36	Suction Interconnector	Stainless Steel	304
37	Pump Shaft	Stainless Steel	431
44	Coupling	Stainless Steel	304
47	Strap	Stainless Steel	304
52	Cable Guard	Stainless Steel	304
86	Valve Seat	NBR	
87	Neck Ring	SUS304+NBR	
88	Nut	Stainless Steel	304
89	Bearing	NBR	
90	Bearing	NBR+SUS304	
91	Screw	Stainless Steel	304
92	Key	Stainless Steel	304
93	O-Ring	NBR	
94	O-Ring	NBR	
95	Spring	Stainless Steel	304
98	Spring Washer	Stainless Steel	304

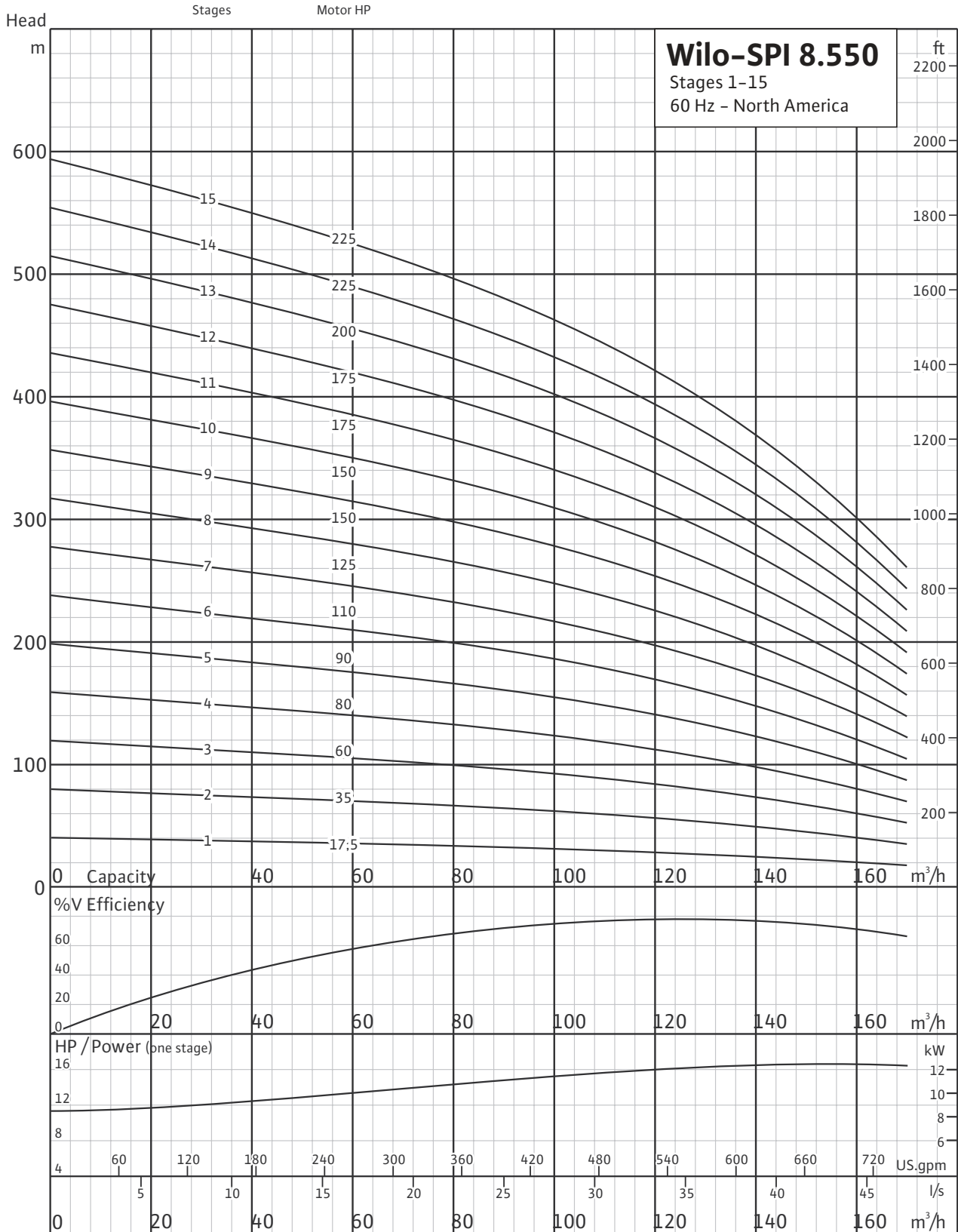
\*AISI 316 Stainless Steel Pumps are available on request.

# Wilo-SPI 8.550

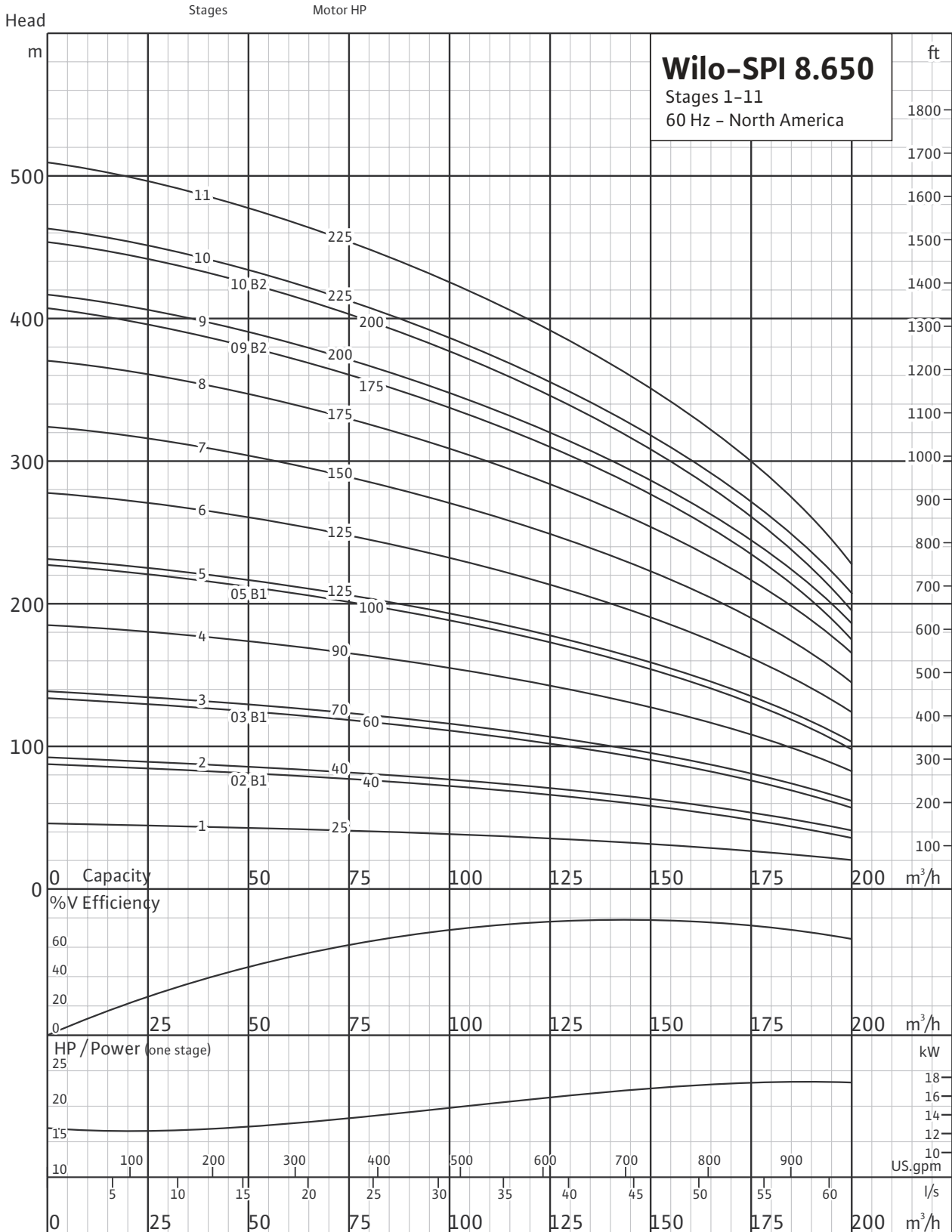
## Stainless Steel Submersible Well Pumps



### Stages 1-15



Stages 1-11



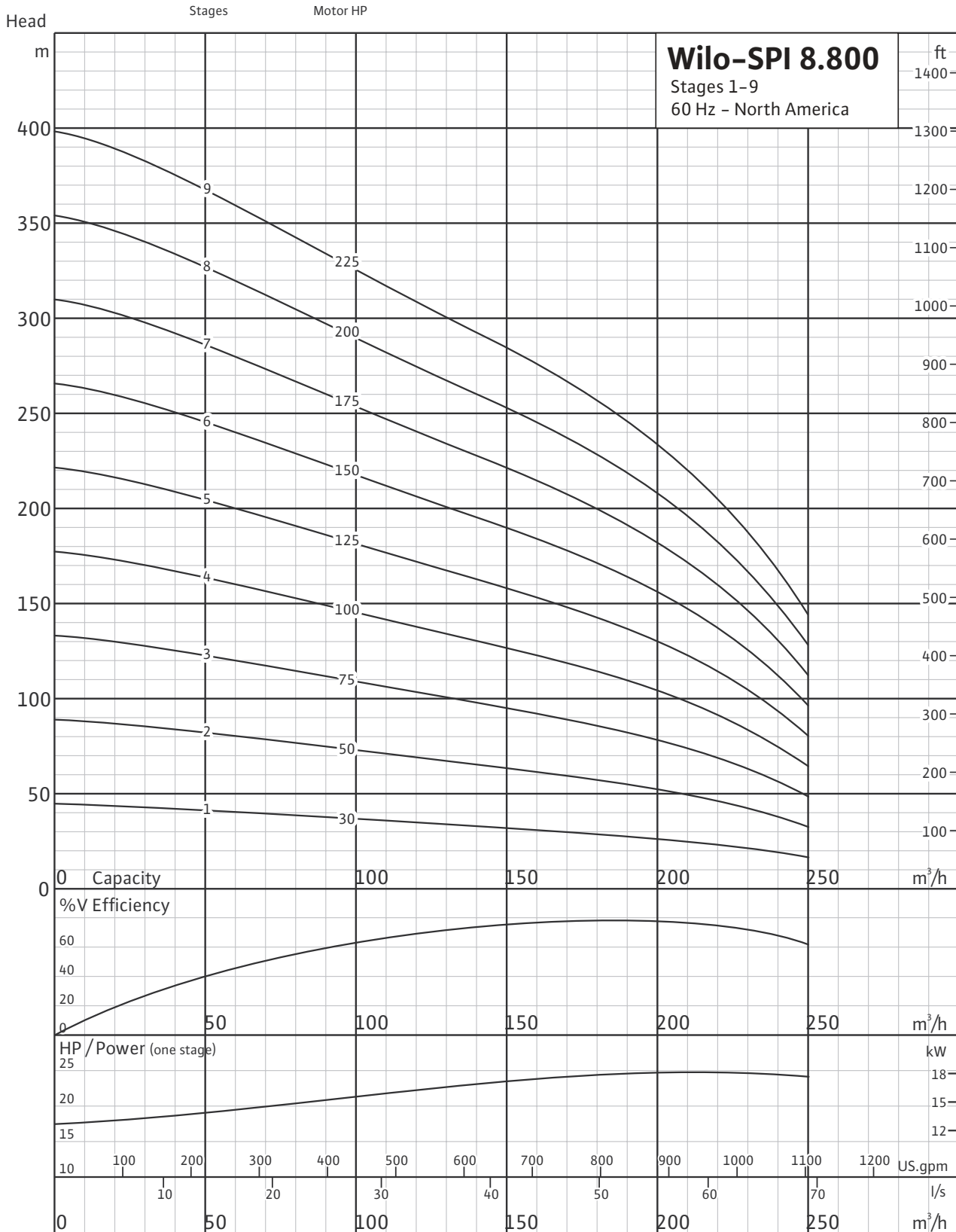


# Wilo-SPI 8.800

Stainless Steel Submersible Well Pumps



## Stages 1-9



### Weights and Dimensions

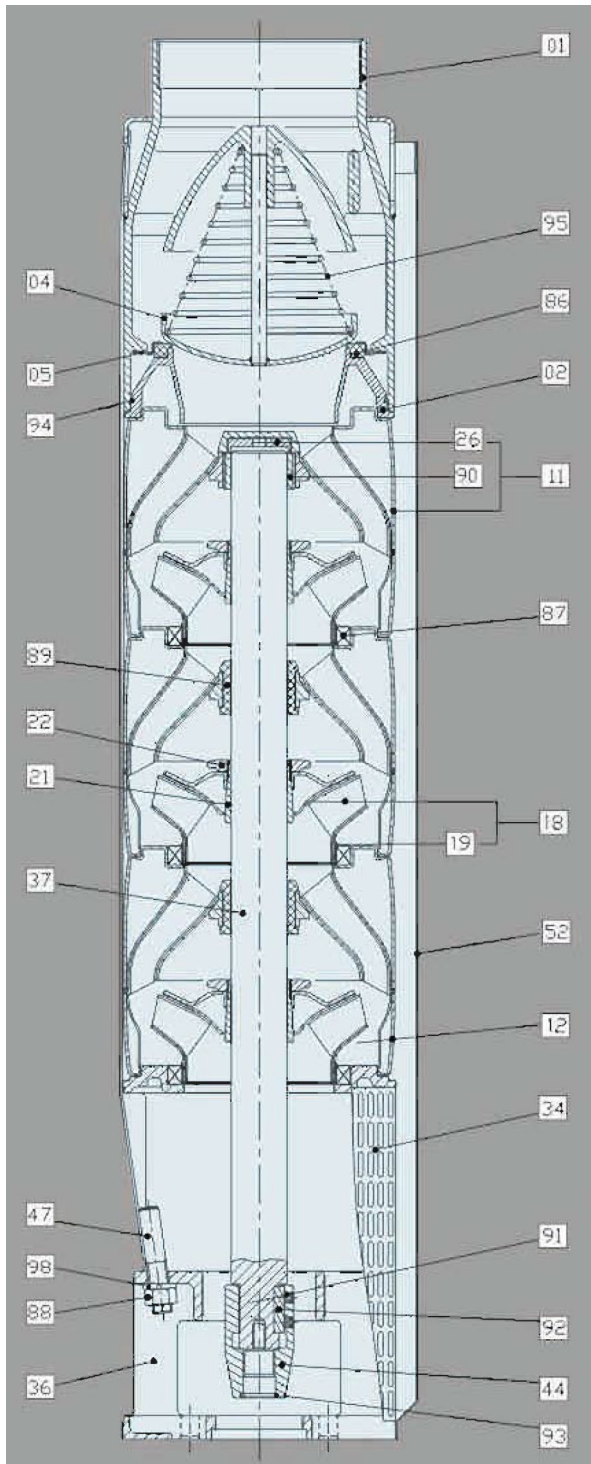
550 GPM									
Model	HP	Dimensions (In.)					Weights (lbs.)		
		A	B	C	D	E	Complete Unit	Pump End	Motor
<b>SPI 8.550-01</b>	15	62.9	35.9	27	6	5.6	214	71	143
<b>SPI 8.550-02</b>	35	81.1/70.2	47.9/37	33.1	6	5.6/6.8	300/284	84	216/201
<b>SPI 8.550-03</b>	50	92.3/81/83.2	53/41.7/43.9	39.3	6	5.6/6.8/7.6	342/348/403	99	243/249/304
<b>SPI 8.550-04</b>	60	90.2/92.7	44.8/47.3	45.4	6	6.8/7.6	392/448	112	280/335
<b>SPI 8.550-05</b>	75	104.3	52.8	51.5	6	7.6	534	126	408
<b>SPI 8.550-06</b>	90	111.5	53.8	57.7	6	7.6	551	141	410
<b>SPI 8.550-07</b>	110	121.7	57.9	63.8	6	7.6	617	154	463
<b>SPI 8.550-08</b>	125	130.4	60.5	69.9	6	7.6	635	168	467
<b>SPI 8.550-09</b>	150	136.5	60.5	76.1	6	9.7	661	194	600
<b>SPI 8.550-10</b>	175	142.6	60.5	82.2	6	9.7	679	212	688
<b>SPI 8.550-11</b>	175	148.8	60.5	88.3	6	9.7	692	225	847

Weights and Dimensions

650 GPM									
Model	HP	Dimensions (In.)					Weights (lbs.)		
		A	B	C	D	E	Complete Unit	Pump End	Motor
SPI 8.650-01	25	66.6	39.6	27	6	5.6	238	71	168
SPI 8.650-02	40	82.2/71.7/74.7	49.1/38.6/41.6	33.1	6	5.6/6.8/7.6	313/313/370	86	227/227/284
SPI 8.650-03	60	84.1/86.5	44.8/47.3	39.3	6	6.8/7.6	379/434	99	280/335
SPI 8.650-04	70	87.2/89.9	48/50.6	39.3	6	6.8/7.6	403/474	99	304/375
SPI 8.650-05	90	99.2	53.8	45.4	6	7.6	525	115	410
SPI 8.650-06	100	106.3	54.8	51.5	6	7.6	558	128	430
SPI 8.650-07	125	112	60.5	51.5	6	7.6	595	128	467
SPI 8.650-08	150	118.1	60.5	57.7	6	9.7	611	143	553
SPI 8.650-09	175	126	63.8	63.8	6	9.7	780	157	624
SPI 8.650-10	200	133.9	67.7	69.9	6	9.7	849	172	677
SPI 8.650-11	225	133.9	67.7	76.1	6	9.7	908	185	723

**Weights and Dimensions**

<b>800 GPM</b>									
Model	HP	Dimensions (In.)					Weights (Lbs.)		
		A	B	C	D	E	Complete Unit	Pump End	Motor
<b>SPI 8.800-01</b>	30	70.6/62	43.5/35	27	6	5.6/6.8	267/265	75	192/190
<b>SPI 8.800-02</b>	50	86.2/74.9/77.1	53/41.7/43.9	33.1	6	5.6/6.8/7.6	331/337/392	88	243/249/304
<b>SPI 8.800-03</b>	75	88.5/89.9	49.2/50.6	39.3	6	6.8/7.6	408/478	104	304/375
<b>SPI 8.800-04</b>	100	100.2	54.8	45.4	6	7.6	547	117	430
<b>SPI 8.800-05</b>	125	112	60.5	51.5	6	7.6	600	132	467
<b>SPI 8.800-06</b>	150	118.1	62.6	57.7	6	9.7	611	143	553
<b>SPI 8.800-07</b>	175	126	63.8	63.8	6	9.7	780	157	624
<b>SPI 8.800-08</b>	200	133.9	67.7	69.9	6	9.7	849	172	677
<b>SPI 8.800-09</b>	225	133.9	67.7	76.1	6	9.7	908	185	723



Pos.	Components	Material	Standard
01	Discharge	Stainless Steel	304
02	Lower Valve Seat Retainer	Stainless Steel	304
04	Valve Cup	Stainless Steel	304
05	Upper Valve Seat Retainer	Stainless Steel	304
11	Upper Diffuser	Stainless Steel	304
+26	Spacing Washer For Stop Ring	Carbon Fiber +MoS2+PTFE	
+90	Upper Bearing	SUS304+NBR	
12	Diffuser	Stainless Steel	304
18	Impeller	Stainless Steel	304
18	Impeller - A	Stainless Steel	304
+19	Ring of Impeller	Stainless Steel	304
21	Split Cone	Stainless Steel	304
22	Split Cone Nut	Stainless Steel	304
34	Strainer - one lead	Stainless Steel	304
34	Strainer - two leads	Stainless Steel	304
36	Suction Interconnector - 6"	Stainless Steel	304
36	Suction Interconnector - 8"	Stainless Steel	304
37	Shaft	Stainless Steel	431
44	Coupling - 6"	Stainless Steel	304
44	Coupling - 8"	Stainless Steel	304
47	Strap	Stainless Steel	304
52	Cable Guard	Stainless Steel	304
86	Valve Seat	NBR	70
87	Neck Ring	PPS+NBR	
88	Nut	Stainless Steel	304
89	Bearing	NBR	70
91	Screw - 6"	Stainless Steel	304
91	Screw - 8"	Stainless Steel	304
92	Key - 6"	Stainless Steel	304
92	Key - 8"	Stainless Steel	304
93	O-Ring - 6"	NBR	70
93	O-Ring - 8"	NBR	70
94	O-Ring	NBR	70
95	Spring	Stainless Steel	304
98	Spring Washer	Stainless Steel	304

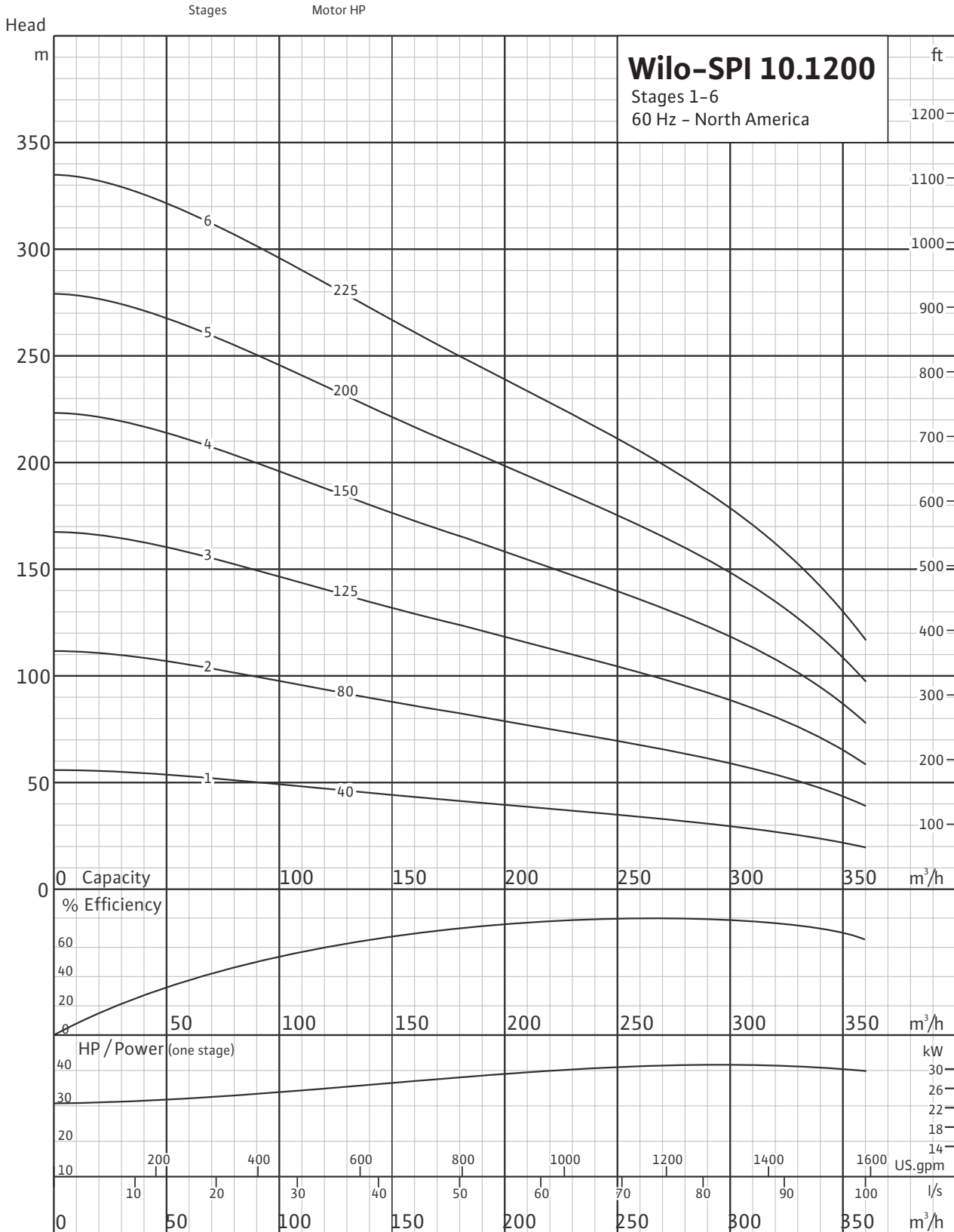
\*AISI 316 Stainless Steel Pumps are available on request.

# Wilo-SPI 10.1200

Stainless Steel Submersible Well Pumps



## Stages 1-6



Weights and Dimensions

1200 GPM									
Model	HP	Dimensions (In.)					Weights (Lbs.)		
		A	B	C	D	E	Complete Unit	Pump End	Motor
<b>SPI 10.1200-01</b>	40	80.4/69.8/72.8	49.1/38.6/41.6	31.3	6	5.6/6.8/7.6	324/324/381	97	227/227/284
<b>SPI 10.1200-02</b>	80	91	52.8	38.2	6	7.6	529	121	408
<b>SPI 10.1200-03</b>	125	105.6	60.5	45.2	6	7.6	613	146	467
<b>SPI 10.1200-04</b>	150	114.7	62.6	52.1	6	9.7	721	168	553
<b>SPI 10.1200-05</b>	175	122.8	63.8	59	6	9.7	816	192	624
<b>SPI 10.1200-06</b>	250	133.7	67.7	65.9	6	9.7	893	216	677
<b>SPI 10.1200-07</b>	250	140.6	67.7	72.9	6	9.7	963	240	723

## Electrical Data

### 7" R Series Motors

HP	kW	PH (-)	Voltage	FL Amps	SF Amps	Cos $\Phi$	Eff.	Article Number
30	22	3	460	38.2	43.9	0.87	83%	2763387
40	30	3	460	52.1	59.9	0.87	84%	2763388
50	37	3	460	61.4	70.6	0.89	86%	2763389
60	45	3	460	74.7	86	0.89	86%	2763390
75	56	3	460	90.2	103.8	0.91	87%	2763391
90	67	3	460	111.2	127.9	0.91	87%	2763392

### 8" R Series Motors

HP	kW	PH (-)	Voltage	FL Amps	SF Amps	Cos $\Phi$	Eff.	Article Number
40	30	3	460	51	58.7	0.89	83%	2761163
50	37	3	460	61.4	70.6	0.89	84%	2761164
60	45	3	460	74.8	86	0.89	85%	2761165
75	52	3	460	90.2	103.7	0.9	83%	2761166
100	75	3	460	123.1	141.6	0.9	85%	2761167
125	92	3	460	152.8	175.7	0.89	85%	2761168

### 10" R Series Motors

HP	kW	PH (-)	Voltage	FL Amps	SF Amps	Cos $\Phi$	Eff.	Article Number
150	112	3	460	180.5	207.6	0.91	83%	2711903
175	130	3	460	207	238	0.92	84%	2761176
200	150	3	460	236	271.4	0.92	85%	2711904
250	186	3	460	297	341.6	0.92	83%	2711905



## Dimensions

### 7" R Series Motors

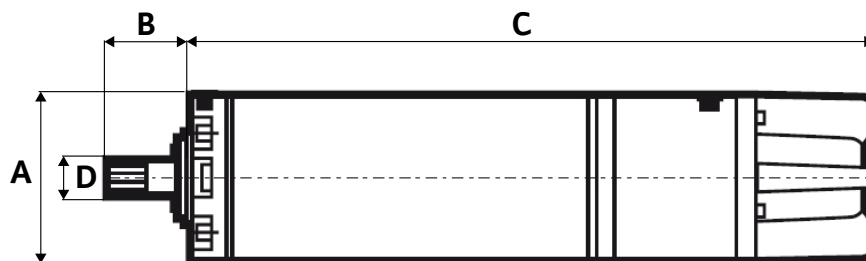
HP	kW	PH	A	B	C	D	Weight (lbs)
30	22	3	6.8 in	2.87	37 in	1	195
40	30	3	6.8 in	2.87	42 in	1	208
50	37	3	6.8 in	2.87	45 in	1	232
60	45	3	6.8 in	2.87	48 in	1	255
75	56	3	6.8 in	2.87	49.5 in	1	294
90	67	3	6.8 in	2.87	53 in	1	347

### 8" R Series Motors

HP	kW	PH	A	B	C	D	Weight (lbs)
40	30	3	7.48 in	4 in	41.6 in	1.5 in	279.4
50	37	3	7.48 in	4 in	43.9 in	1.5 in	292.6
60	45	3	7.48 in	4 in	47.3 in	1.5 in	308
75	52	3	7.48 in	4 in	50.6 in	1.5 in	334.4
100	75	3	7.48 in	4 in	54.7 in	1.5 in	418
125	92	3	7.48 in	4 in	60.5 in	1.5 in	457.6

### 10" R Series Motors

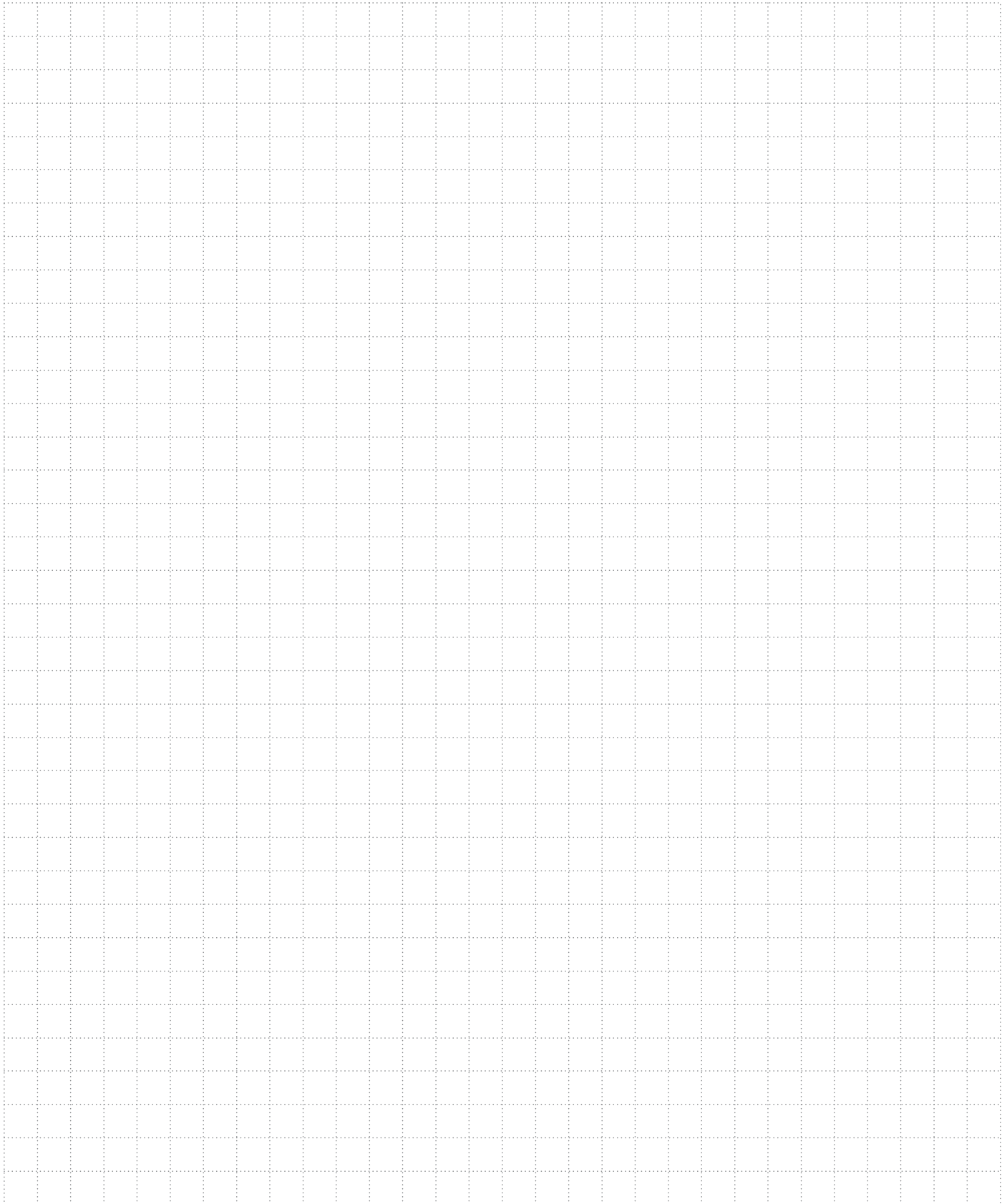
HP	kW	PH	A	B	C	D	Weight (lbs)
150	112	3	9.1 in	4 in	59.4 in	1.5 in	657.8
175	130	3	9.1 in	4 in	63.4 in	1.5 in	721.6
200	150	3	9.1 in	4 in	68.5 in	1.5 in	809.6
250	186	3	9.1 in	4 in	71.6 in	1.5 in	959.2



## Wire Sizing

6”-7”-8”-10” 3~ 60 Hz

Motor Rating		Copper Wire Size												
Voltage	HP	14	12	10	8	6	4	2	0	00	000	0000	250	350
208	5		170'	280'	440'	690'	1080'	1660'	2490'					
	7½			200	310	490	770	1180	1770	2170'	2600'			
	10				230	370	570	880	1330	1640	1970			
	15					250	390	600	910	1110	1340			
	10						300	460	700	860	1050	1270'		
	25							370	570	700	840	1030		
	30							310	470	580	700	850		
230	5		230'	370'	590'	920'	1430'	2190'						
	7½			260	420	650	1020	1560	2340'	2870'				
	10				310	490	760	1170	1760	2160	2610'			
	15					330	520	800	1200	1470	1780			
	10						400	610	930	1140	1380	1450'		
	25						320	500	750	920	1120	1170		
	30							410	620	760	930	970		
460	5	590'	950'	1500'	2360'	3700'	5750'							
	7½	420	680	1070	1690	2640	4100	6260'						
	10	310	500	790	1250	1960	3050	4680						
	15			540	850	1340	2090	3200	4810'					
	10			410	650	1030	1610	2470	3730					
	25				530	830	1300	1990	3010	3700'				
	30				430	680	1070	1640	2490	3060	3700'			
	40						790	1210	1830	2250	2710	3290'	3730'	
	50						640	980	1480	1810	2190	2650	3010	3830'
	60							830	1250	1540	1850	2240	2540	3240
	75								1030	1260	1520	1850	2100	2700
	100									940	1130	1380	1560	2010
	125										890	1000	1220	1560
	150												1050	1340
	200													1030
250														990



**WILO USA LLC**

+ 1 262-204-6600  
[www.wilo-usa.com](http://www.wilo-usa.com)  
[info.us@wilo.com](mailto:info.us@wilo.com)

