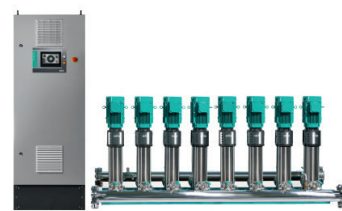


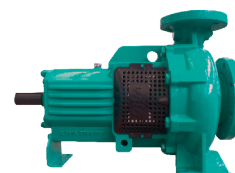
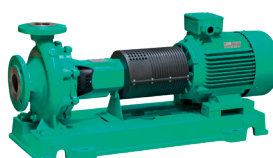


Member of
German Water
Partnership

wilo



Product range	MHiKE D Series <i>Booster pumps with inverter</i>	Helix V <i>Vertical, multistage centrifugal pumps</i>	HiBoost Series <i>Multi-pump pressure boosting systems</i>
Application	<ul style="list-style-type: none"> → Water supply and pressure boosting (Big capacity, high-rise/low water pressure) → Sprinkler systems 	<ul style="list-style-type: none"> → Water supply and pressure boosting → Process water → Cooling water circulation systems → Washing systems → Irrigation 	<ul style="list-style-type: none"> → Direct water supply, with frequent pressure fluctuation → Buildings with large engine room and limited personnel → Sites with many different operation points → Inverter: single/multiple/combination
Special Features	<ul style="list-style-type: none"> → Energy saving by integrated inverter → Various operation mode → Pump load distribution → Customer optimized system setting: speed and pressure → Easy operation by display screen → High durability by stainless steel pump → Operation by skipping the faulty pump → Friction loss compensation function 	<ul style="list-style-type: none"> → Efficiency-optimised, laser-welded 2D/3D hydraulics, flow and degassing optimised → Corrosion-resistant impellers, guide vane apparatuses and stage housings → Flow and NPSH-optimised pump housing → Maintenance-friendly design. → WRAS/KTW/ACS approval for all parts that come in contact with the fluid. 	<ul style="list-style-type: none"> → Energy efficient and low noise → Excellent control and protection functions → Stable supply system due to quick adjustment for condition change → Easy and simple system control and monitoring → No. of pumps : up to 8 pumps.
Volume flow Q max.	50 m ³ /hr	80 m ³ /hr	1360 m ³ /hr
Delivery head H max.	80 m	280 m	290 m
Technical data	<ul style="list-style-type: none"> → Fluid temperature -15 ~ +80 °C → Max. operating pressure 16/25 bar → Max. inlet pressure 10 bar → Protection class IPx4 → Motor power: 1.5 kW x 2ea, 1.85 kW x 2ea, 2.2 kW x 3ea, 2.5 kW x 3ea → Dis. sizes: 50 ~ 65 mm → Tank : 4 ℓ 	<ul style="list-style-type: none"> → Fluid temperature -30 ~ +120 °C → Max. operating pressure 16/25 bar → Max. inlet pressure 10 bar → Protection class IP55 → Motor power: 1.55 kW ~ 45 kW → Dis. sizes: 25 ~ 80 mm 	<ul style="list-style-type: none"> → Fluid temperature 70 °C → Max. operating pressure 10/25/30 bar → Max. inlet pressure 10 bar → Protection class IP54 or IP55 → Motor power: 0.55 kW~45 kW → Dis. sizes: 25 ~ 100 mm → Tank : 100 ~ 450 ℓ



Product range	SCP Series <i>Axially split case pumps</i>	NL Series <i>End suction pumps</i>	MISO/PISO Series <i>End suction pumps</i>
Application	<ul style="list-style-type: none"> → Pumping of heating water in accordance with VDI 2035, water-glycol mixtures, cooling/ cold water and process water → Municipal water supply, irrigation, building services, general industry, power stations, etc. 	<ul style="list-style-type: none"> → Pumping of heating water, cold water and water-glycol mixtures without abrasive substances supply and pressure boosting → Applications in municipal water supply, irrigation, general industry, power stations etc. 	<ul style="list-style-type: none"> → Chemical and process → Water supply/HVAC → Irrigation and sprinkling systems → Fire fighting/jockey pump → General industry
Special Features	<ul style="list-style-type: none"> → Energy saving by integrated inverter → Various operation mode → Various operation mode → Customer optimized system setting: speed and pressure → Easy operation by display screen → High durability by stainless steel pump 	<ul style="list-style-type: none"> → Reduced life-cycle costs through optimised efficiency levels → Bidirectional, force-flushed mechanical seal → Low NPSH values, best cavitation properties → Shaft coupling with or without spacer 	<ul style="list-style-type: none"> → End suction top discharge → Mounting: Horizontal → Back pullout design → Closed impeller → Mechanical seal/gland packing → Grease lubricated, entifriction bearings
Volume flow Q max.	4000 m ³ /hr	500 m ³ /hr	750 m ³ /hr
Delivery head H max.	180 m	90 m	170 m
Technical data	<ul style="list-style-type: none"> → Fluid temperature 0 ~ +120 °C → Max. operating pressure 16 bar or 25 bar → Max. inlet pressure 10 bar → Protection class IP54 or IP55 → Motor power: 3.7 kW ~ 1000 kW → Dis. sizes: 100 ~ 400 mm 	<ul style="list-style-type: none"> → Fluid temperature -20 ~ +120 °C → Max. operating pressure 16 bar or 25 bar → Max. inlet pressure 10 bar → Protection class IP55 → Motor power: 0.4 kW ~ 160 kW → Dis. sizes: 32 ~ 150 mm 	<ul style="list-style-type: none"> → Fluid temperature -20 ~ +120 °C → Max. operating pressure 16 bar → Max. inlet pressure 10 bar → Protection class IP55 → Mounting: Horizontal, vertical (optional) → Lubrication: Grease, oil

WILO SE Philippines
24th/FL, BGC Corporate Center
11th Ave., corner 30th Street
Bonifacio Global City, Taguig 1634, Philippines

M +632 8790 0178
sales.ph@wilo.com
www.wilo.ph

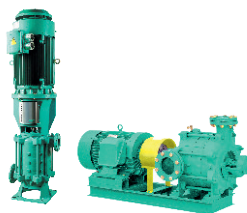
Stay connected with us!





Member of
German Water
Partnership

wilo



Product range	VMT, CNE, VAF Series <i>Vertical turbine pumps</i>	PMT, PMV Series <i>Multistage ring section pumps</i>	EMU FA Series <i>Submersible sewage pumps</i>
Application	<ul style="list-style-type: none"> → Industrial or municipal water supply → Irrigation → Cooling for power plant → Dewatering, flood control → Fire fighting 	<ul style="list-style-type: none"> → Raw water intake, circulation, drainage pressure boosting → Water supply, cooling/heating water → Fire extinguish system → Boiler supply → Agriculture/sprinkler system 	<ul style="list-style-type: none"> → Untreated sewage with faeces and long fiber components → Sewage containing faeces (DIN) EN 12050-1) → Process water, wastewater
Special Features	<ul style="list-style-type: none"> → Minimum surface area needed → High hydraulic efficiency → Closed impeller → Above or below floor discharge → Non pull out bowl/rotating element antifriction bearing → Submerged pump hydraulics → Design to order as per customer specifications 	<ul style="list-style-type: none"> → Compact design and energy saving → Easy piping and installation → A wide range of operating point → Low noise/vibration → Flexible sealing: gland packing or mechanical seal → Balancing hole in impeller-reduced axial thrust → Flexible installation with both vertical and horizontal installation 	<ul style="list-style-type: none"> → Self-cooling motors for the use in wet well and dry well installation → Process security thanks to extensive monitoring devices → Special version for abrasive and corrosive fluids → Low vibration and long service life thanks to high quality components → Customized versions are possible
Volume flow Q max.	50,000 m ³ /hr	350 m ³ /hr	7,840 m ³ /hr
Delivery head H max.	450 m	250 m	100 m
Technical data	<ul style="list-style-type: none"> → Permitted temperature range up to 80 °C, or up to 105 °C on request → Nominal diameter on pressure side DN 100 to DN 2000 	<ul style="list-style-type: none"> → Fluid temperature 0 ~ 80 °C → Max. operating pressure 16/25 bar → Max. inlet pressure 10 bar → Protection class IP54 → Motor power: 1.5 kW ~ 200 kW → Dis. sizes: 40 ~ 150 mm 	<ul style="list-style-type: none"> → Fluid temperature 40 °C → Immersed operating mode: S1 → Non-immersed operating mode: S1 with self-cooling motor, S2 with surface-cooled motor → Protection class IP68 → Max. immersion depth: 20 m



Product range	PD,PDV,PDN,PDG,SSD,SSV Series <i>Submersible drainage/sewage pumps</i>	PSS Series <i>Submersible borehole pumps</i>	EMU K..KM..Polder Series <i>Submersible borehole pumps</i>
Application	<ul style="list-style-type: none"> → General drainage for buildings → Drainage and wastewater transfer → Factory waste water disposal → Sewage treatment plant, waste treatment → Construction site or civil engineering, buildings, tunnel, subway & sewage facilities 	<ul style="list-style-type: none"> → Water supply from boreholes and rain water storage tanks → Municipal and industrial systems → Sprinkling and irrigation → Pressure boosting; lowering the ground water level 	<ul style="list-style-type: none"> → Supplying sprinkler systems → Potable and process water from tanks or shallow bodies of water → Municipal industrial water supply → Irrigation, lowering the ground water level → Geothermal and offshore applications
Special Features	<ul style="list-style-type: none"> → Stainless steel shaft as standard → Leak-proof by double M/seal and oil seal → Excellent lubrication → Minimize stopping-up foreign materials → Powerful starting torque → Excellent sludge transfer by non-clog type → Safety design with built-in OLP → Various materials are available 	<ul style="list-style-type: none"> → Compact design → Excellent durability by NEMA standard bearings and all stainless steel → A wide range of motor → Easy maintenance → Flexible installation with both vertical and horizontal installation 	<ul style="list-style-type: none"> → Vds certification → Sturdy cast iron or bronze → Deep water lowering → Compact construction → Maintenance friendly → Optional with Ceram CT coating for increasing the efficiency
Volume flow Q max.	1,480 m ³ /hr	240 m ³ /hr	2,400 m ³ /hr
Delivery head H max.	43 m	800 m	560 m
Technical data	<ul style="list-style-type: none"> → Fluid temperature -5 ~ 40 °C → Max. operating pressure 16 bar or 25 bar → Max. inlet pressure 10 bar → Protection class IP68 → Motor power: 1.5 kW ~ 40 kW → Dis. sizes: 50 ~ 500 mm → Ball passage: max 98mm 	<ul style="list-style-type: none"> → Fluid temperature 4 ~ 40 °C → Max. operating pressure 20 bar → Protection class IP68 → Motor power: 0.75 kW ~ 93 kW → Dis. sizes: 32 ~ 150 mm 	<ul style="list-style-type: none"> → Fluid temperature 20 ~ 30 °C → Minimum flow rate at motor: 0.1 m/s → Maximum sand content: 35 g/m³ → Up to 10 starts per hour → Max. immersion depth: 350m

WILO SE Philippines
24th/FL, BGC Corporate Center
11th Ave., corner 30th Street
Bonifacio Global City, Taguig 1634, Philippines

M +632 8790 0178
sales.ph@wilo.com
www.wilo.ph

Stay connected with us!

