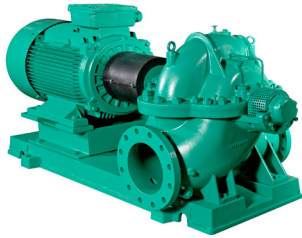


# Submittal Data Sheet

## Wilco SCP - Horizontal Split Case Pumps

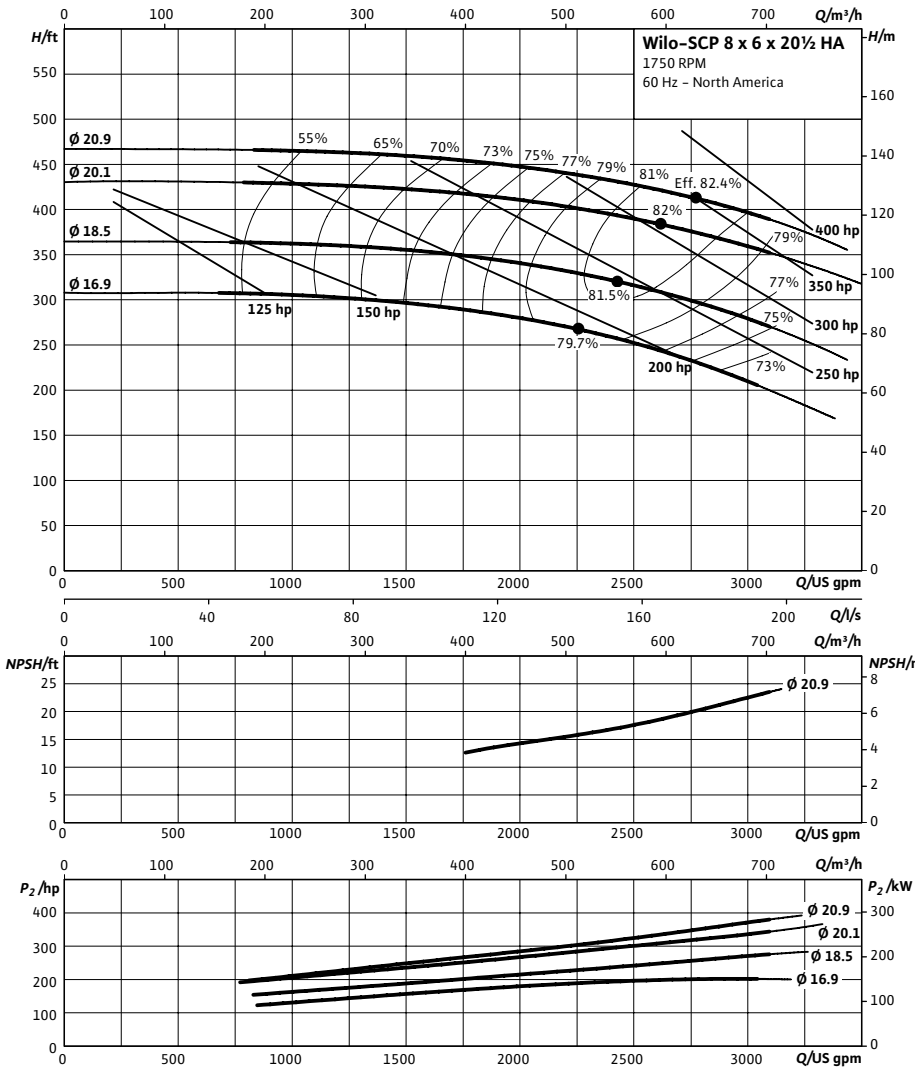


### SCP 8 x 6 x 20½ HA



|               |       |
|---------------|-------|
| Project:      |       |
| Engineer:     |       |
| Contractor:   |       |
| Submitted By: | Date: |
| Approved By:  | Date: |

| Tag # | Model #            | Flow (USGPM) | Head (Feet) | HP | Enclosure TEFC/ODP | Frame | Cycle | Phase | Voltage | RPM |
|-------|--------------------|--------------|-------------|----|--------------------|-------|-------|-------|---------|-----|
|       | SCP 8 x 6 x 20½ HA |              |             |    |                    |       | 60 Hz | 3     |         |     |



#### Technical Data

**Approved Fluids**  
Heating Water  
Cooling and cold water  
Water-Glycol mixtures (for 20-40% glycol and fluid temp ≤ 104°F [40°C])

**Fluid Temperature**  
Mechanical Seal: 18°F to 250°F (-8°C to 120°C)  
Stuffing Box Packing: 18°F to 220°F (-8°C to 105°C)

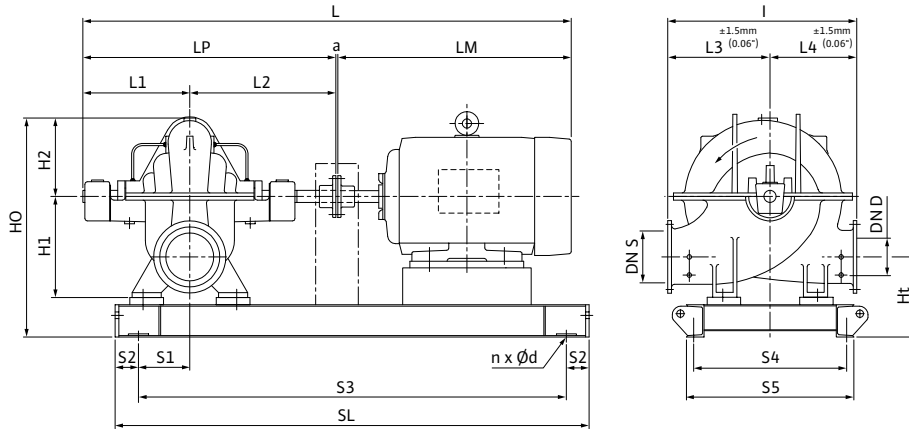
#### Materials of Construction

|   |  |
|---|--|
| <input type="checkbox"/> Pump Housing               | A48 Class 35                           |
| <input type="checkbox"/> Pump Housing (Optional)    | Ni-resist BS 3468 Gr 2 / BS 2789 500.1 |
| <input type="checkbox"/> Impeller                   | BS 84 C83 600                          |
| <input type="checkbox"/> Impeller (optional)        | A48 Class 35 / BS 84 C83 600           |
| <input type="checkbox"/> Stationary Wear Rings      | BS 84 C93 700                          |
| <input type="checkbox"/> Pump Shaft                 | A276 type 410                          |
| <input type="checkbox"/> Pump Shaft (optional)      | BS 970 316 S16                         |
| <input type="checkbox"/> Mechanical Seal            | Carbon/silicon carbide/EPDM (E1)       |
| <input type="checkbox"/> Other Mechanical Seals     | Avail. on request                      |
| <input type="checkbox"/> Additional Spacer Coupling | Avail. on request                      |
| <input type="checkbox"/> Other:                     |  |

Approval Stamp

### Dimensional Drawing

### Single Stage Pump



#### SCP 8 x 6 x 20½ HA

Dimensions - Inches (mm)

| Frame           | a           | L               | I              | L1             | L2             | L3             | L4             | LM              | LP              | H1             | H2             | HO             | Ht             | n | Ød          | S1            | S2            | S3              | S4             | S5             | SL              | P5 | P6 |
|-----------------|-------------|-----------------|----------------|----------------|----------------|----------------|----------------|-----------------|-----------------|----------------|----------------|----------------|----------------|---|-------------|---------------|---------------|-----------------|----------------|----------------|-----------------|----|----|
| 405T            | .50<br>(13) | 89.13<br>(2264) | 35.06<br>(891) | 19.88<br>(505) | 24.50<br>(622) | 17.69<br>(449) | 17.31<br>(440) | 44.25<br>(1124) | 44.38<br>(1127) | 18.31<br>(465) | 14.56<br>(370) | 38.81<br>(986) | 11.63<br>(295) | 4 | .91<br>(23) | 8.19<br>(208) | 4.00<br>(102) | 60.06<br>(1526) | 21.69<br>(551) | 24.06<br>(611) | 68.06<br>(1729) | -  | -  |
| 444T            | .50<br>(13) | 89.13<br>(2264) | 35.06<br>(891) | 19.88<br>(505) | 24.50<br>(622) | 17.69<br>(449) | 17.31<br>(440) | 44.25<br>(1124) | 44.38<br>(1127) | 18.31<br>(465) | 14.56<br>(370) | 38.81<br>(986) | 11.63<br>(295) | 4 | .91<br>(23) | 8.19<br>(208) | 4.00<br>(102) | 53.19<br>(1356) | 21.69<br>(551) | 24.06<br>(611) | 73.19<br>(1859) | -  | -  |
| 445T/<br>200 hp | .50<br>(13) | 89.13<br>(2264) | 35.06<br>(891) | 19.88<br>(505) | 24.50<br>(622) | 17.69<br>(449) | 17.31<br>(440) | 44.25<br>(1124) | 44.38<br>(1127) | 18.31<br>(465) | 14.56<br>(370) | 38.81<br>(986) | 11.63<br>(295) | 4 | .91<br>(23) | 8.19<br>(208) | 4.00<br>(102) | 53.19<br>(1356) | 21.69<br>(551) | 24.06<br>(611) | 73.19<br>(1859) | -  | -  |
| 445T/<br>250 hp | .19<br>(5)  | 95.31<br>(2345) | 35.06<br>(891) | 19.88<br>(505) | 24.50<br>(622) | 17.69<br>(449) | 17.31<br>(440) | 47.75<br>(1213) | 44.38<br>(1127) | 18.31<br>(465) | 14.56<br>(370) | 38.81<br>(986) | 11.63<br>(295) | 4 | .91<br>(23) | 8.19<br>(208) | 4.00<br>(102) | 65.94<br>(1675) | 21.69<br>(551) | 24.06<br>(611) | 73.19<br>(1859) | -  | -  |
| 445T/<br>300 hp | .19<br>(5)  | 98.00<br>(2489) | 35.06<br>(891) | 19.88<br>(505) | 24.50<br>(622) | 17.69<br>(449) | 17.31<br>(440) | 53.38<br>(1356) | 44.38<br>(1127) | 18.31<br>(465) | 14.56<br>(370) | 38.81<br>(986) | 11.63<br>(295) | 4 | .91<br>(23) | 8.19<br>(208) | 4.00<br>(102) | 65.94<br>(1675) | 21.69<br>(551) | 24.06<br>(611) | 73.19<br>(1859) | -  | -  |
| 449T/<br>350 hp | .19<br>(5)  | 98.00<br>(2489) | 35.06<br>(891) | 19.88<br>(505) | 24.50<br>(622) | 17.69<br>(449) | 17.31<br>(440) | 53.38<br>(1356) | 44.38<br>(1127) | 18.31<br>(465) | 14.56<br>(370) | 38.81<br>(986) | 11.63<br>(295) | 4 | .91<br>(23) | 8.19<br>(208) | 4.00<br>(102) | 74.19<br>(1884) | 21.69<br>(551) | 24.06<br>(611) | 82.19<br>(2088) | -  | -  |
| 449T/<br>400 hp | .19<br>(5)  | 98.00<br>(2489) | 35.06<br>(891) | 19.88<br>(505) | 24.50<br>(622) | 17.69<br>(449) | 17.31<br>(440) | 53.38<br>(1356) | 44.38<br>(1127) | 18.31<br>(465) | 14.56<br>(370) | 38.81<br>(986) | 11.63<br>(295) | 4 | .91<br>(23) | 8.19<br>(208) | 4.00<br>(102) | 74.19<br>(1884) | 21.69<br>(551) | 24.06<br>(611) | 82.19<br>(2088) | -  | -  |

#### Flange Dimensions – Suction Side

Dimensions - Inches (mm)

| DN S #125 | ØD             | Ød             | Øk             | b            | n | D2          |
|-----------|----------------|----------------|----------------|--------------|---|-------------|
| 8         | 13.50<br>(343) | 10.63<br>(270) | 11.75<br>(298) | 1.13<br>(29) | 8 | .88<br>(22) |

#### Flange Dimensions – Discharge Side

Dimensions - Inches (mm)

| DND 125# | ØD             | Ød            | Øk            | b            | n | D2          |
|----------|----------------|---------------|---------------|--------------|---|-------------|
| 6        | 11.00<br>(279) | 8.50<br>(216) | 9.50<br>(241) | 1.00<br>(25) | 8 | .88<br>(22) |

