

Submittal Data Sheet

Wilco Stratos D - High Efficiency Circulators

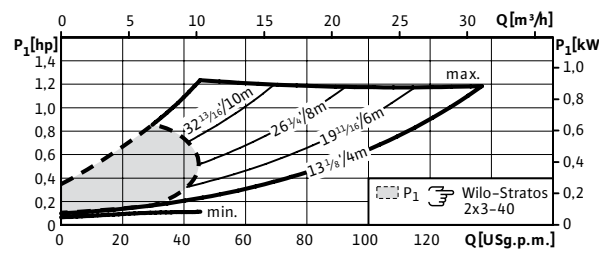
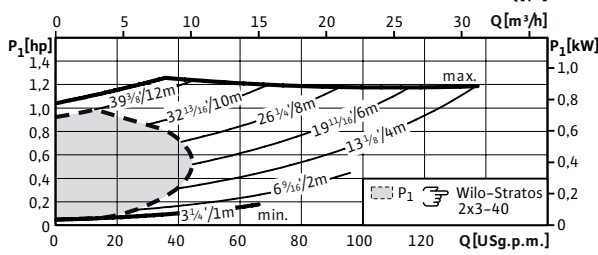
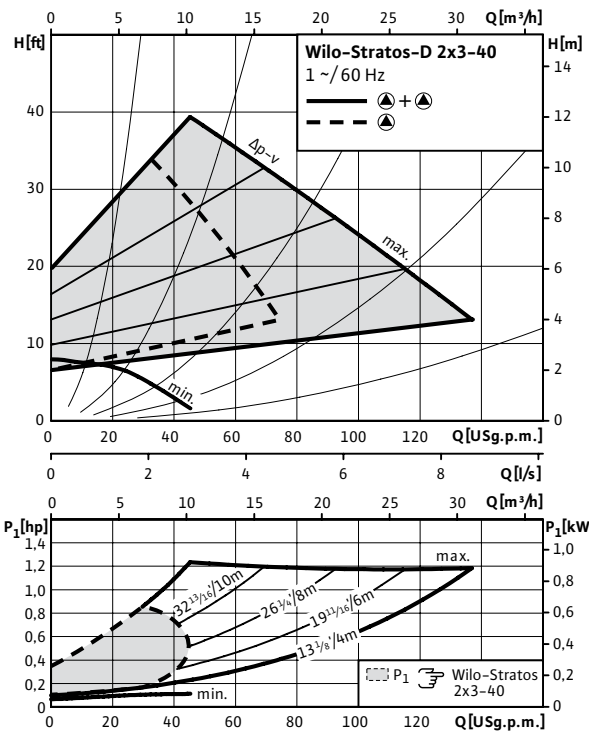
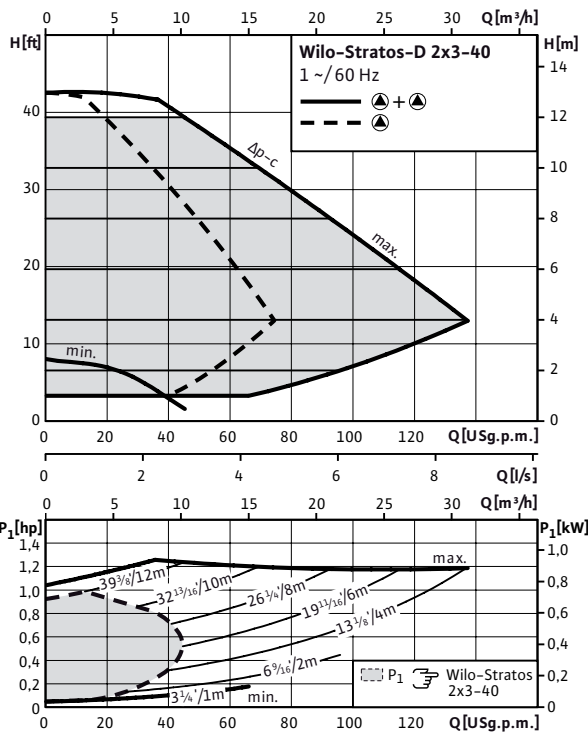


Stratos D 2x3-40



Project:	
Engineer:	
Contractor:	
Submitted By:	Date:
Approved By:	Date:

Tag #	Model #	Flow	Head	Control Mode	Cycle	Phase	Voltage
	Stratos D 2x3-40				60Hz	1	230V



Technical Data

Liquid Temp Range	14°F to 230°F (-10°C to 110°C)
Max Temperature	104°F (40°C)
Min. Suction Pressure (122°F)	7.1 PSI
Min. Suction Pressure (203°F)	17.1 PSI
Min. Suction Pressure (230°F)	25.6 PSI

Materials of Construction

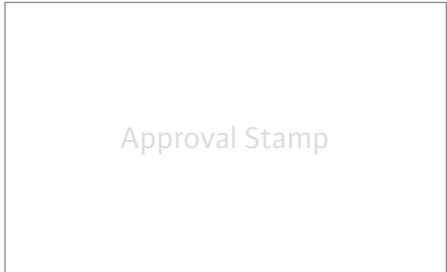
Pump Volute	Grey cast iron (EN-GJL-250)
Impeller	Engineered composite (PPS - 40% GF)
Shaft	Stainless Steel (X46Cr13)
Bearing	Metal Impregnated Carbon

IR Module Selection

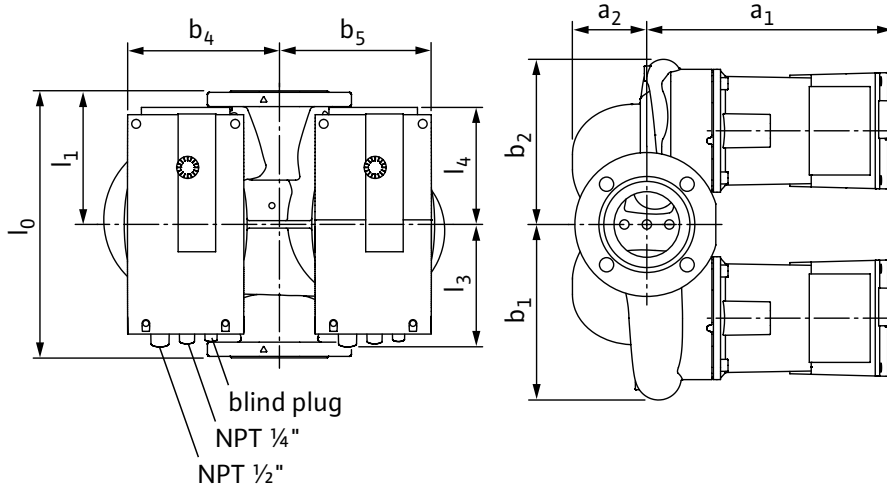
Module 1	Module
	BACnet / Dual Pump
	LONworks / Dual Pump
	SBM Run Signal / Ext. Off / Dual Pump
	SBM Run Signal / 0-10v / Dual Pump
	Ext. Min / 0-10v / Dual Pump
	Ext. Off / 0-10v / Dual Pump
	None

Applications

• Heating Systems	• Cooling Circuits
• Air Conditioning	• Industrial Circulation
• Solar Systems	• Geothermal Systems



Dimensions & Weights

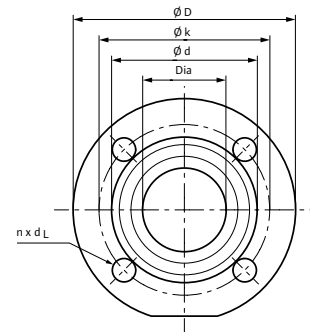


Dimensions and Weights

Model	Dimensions - Inches (mm)										Weight - lbs (kg)
	l_0	l_1	l_3	l_4	a_1	a_2	b_1	b_2	b_4	b_5	
Stratos D 2x3-40	10	5	6 ^{9/16}	4 ^{3/4}	9 ^{15/16}	2 ^{7/16}	5 ^{15/16}	5 ^{11/16}	5 ^{11/16}	5 ^{11/16}	59.52
	(254)	(127)	(166)	(120)	(252)	(62)	(151)	(144)	(145)	(145)	(27.0)

Flange Dimensions

Dia.	Dimensions - Inches (mm)			
	ϕD	ϕd	ϕk	$n \times d_L$
2"	5 ^{1/4}	3 ^{7/16}	4	4 x ϕ ^{9/16}
	(133)	(87)	(102)	(4 x ϕ 14)



ECM Motor Data (Single Motor Operation)

Model	hp	Speed	Watts	FLA
		RPM	W	1~230V
Stratos D 2x3-40	0.469	1400 - 4600	25-470	0.20-2.05

*NOTE: Three phase connections are subject to local electrical codes

