

Pioneering for You

wilo

Information for consultants and contractors

The partner you can rely on
for tailored solutions in metal industries.





Wilo – Pioneering for You.

We are there for you worldwide.

Since 1872, we at Wilo have been turning visionary ideas into intelligent solutions that regularly set new standards in the industry. The goal of our company founder, Caspar Ludwig Opländer, was to use his *Kupfer- und Messing-warenfabrik* to improve and facilitate the supply of water to people. It was not long until the decisive step was made: In 1928, his son Wilhelm designed the world's first circulation accelerator.

We have continued this tradition ever since with pioneering innovations, such as the world's first high-efficiency pump in the heating, air-conditioning and cooling sector, and at the same time we have proven our commitment to using valuable resources such as energy and water responsibly. Today, with its headquarters in Dortmund, the Wilo Group is a complete system supplier of pumps and pumping systems for water management with worldwide presence.

Cooperative support on which you can rely on.

With over 7,500 employees and 60 production and sales companies all over the world, we personally see to it that the desires and requirements of our customers and users – whether specialist consultants, operators, or general contractors – are optimally met every day. This means making your life and work as easy as possible with the help of our products, solutions and services.

“Pioneering for You” is our commitment to a clear customer focus, strict quality orientation and strong passion for technology. In times of dwindling natural resources, the responsible management of water is an extremely important task, which is why we are committed to providing pioneering developments, sustainable product solutions, and cooperative support to ensure you can rely on our solutions for the daily management of water. That’s what we call Pioneering for You.

Mining



Metal industry



Power industry



Food and beverage industry



German Engineering for the highest standards.

Decentralised consulting, designing, development and production combined with global delivery. And all according to a central set of standards: German quality. This way, our specialists ensure a uniform standard of quality, from development right through to commissioning at your site. No matter where you need us: that's what we call Pioneering for You.



- Production sites worldwide
- Dortmund, Germany
 - Minden, Germany
 - Oschersleben, Germany
 - Hof, Germany
 - Laval, France
 - Pune, India
 - Kolhapur, India
 - Beijing, China
 - Qinhuangdao, China
 - Gimhae, South Korea
 - Thomasville, USA



Hof, Germany

Top quality thanks to international quality management

Wilo focuses on excellent processing, perfection in every detail and lasting reliability in products. This commitment to the highest quality is evident in the approximately 20 patent applications we submit each year, our internationally certified production sites

and our global range of services. Our employees around the world ensure that Wilo's quality standards are met. See for yourself. Before we deliver any products, we put them through their paces in one of our test pits.



Testpits	Thomasville, USA	Hof, Germany	Pune, India	Beijing, China	Gimhae, South Korea
Volume flow	3.500 m ³ /h	20.000 m ³ /h	60.000 m ³ /h	23.400 m ³ /h	25.000 m ³ /h
Motor power	112 kW	1.600 kW	4.500 kW	2.000 kW	1.100 kW

Safety can be planned

with a wide range of solutions from Wilo.



Tailored solutions for your needs

As a system provider, we fulfil your needs with a comprehensive range of products and a wide variety of materials. All our pumps and systems offer maximum reliability, flexibility, efficiency and profitability.

But Wilo offers you much more than that: you will experience the full benefit of our services if you need individual support for important requirements from planning to delivery. With many years of experience and know-how, our specialists around the world can solve even the trickiest of tasks whether it's dimensioning, demand-oriented product configuration, certificates and documentation, delivery, spare parts concepts and service.

Our management systems for Quality, Environment, Health and Safety are certified according to the applicable international standards (ISO 9001, 14001, 18001). Also for our products we guarantee accepted worldwide certifications such as ATEX, FM and further more.



Wilo centrifugal pump, the mighty one

- High efficiency IE3 motor with standard IEC flange
- Complies with ErP Directive with $MEI \geq 0.4$
- Maximum reliability thanks to high quality materials and modular and robust design
- Extra compact and space-saving for easy installation and maintenance
- Vertical and horizontal designs available



Wilo split-case pump, the easy-maintenance one

- Energy-efficient thanks to optional IE3 motor technology
- Trendsetting thanks to RoHS conformity
- Longer running time thanks to the perfectly distributed bearing load
- Low wear due to application-oriented material combinations
- Easy maintenance without removing the pressure or suction lines
- Additional energy savings due to Ceram CT impeller coating



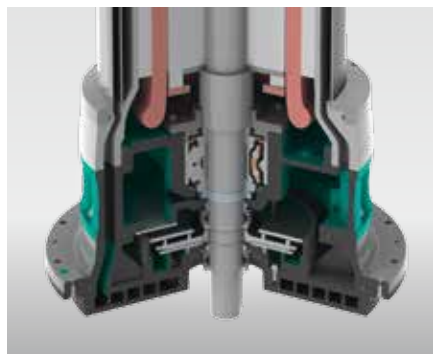
Wilo submersible sewage pump, the solid one

- Highest flexibility for almost every requirement in wet and dry well installations
- Energy-saving thanks to efficient IE3 motor technology
- Operation reliability due to high-quality sealing systems and components
- Simple maintenance
- Optional with Wilo Ceram coating



Ideal for your designing

With the selection software Wilo-Select you will find the right pump including product description, operating manual, tender texts and payback time.



Reliable process thanks to monitoring devices

FKT submersible sewage motors are equipped with an internal cooling system. Thanks to the efficient heat exchanger with a two-chamber system not only an optimum motor cooling is guaranteed but also a safe operation.

The right materials used cost-effectively worldwide.



Reliable sintering water process in the steel industry. Salzgitter Flachstahl GmbH

In focus: operational reliability.

The strategy towards modern plant technology and new process technology demanded extensive investments. The focus was set on achieving maximum operational reliability and minimised wear.

Following the expansion of the hot strip rolling mill, the increased production also significantly boosted utilisation levels of the sintering water circuit (from 8,000 to 11,000 m³ per hour), making a second circuit necessary. This was also equipped with Wilo pumps in response to positive experience with the Wilo-EMU FA 30 submersible pump with a 340 kW motor and an output of 1,800 m³/h with a 45 m water column.

Long lifetime, rapid replacement.

The standard pumps from various manufacturers which were previously installed had to be removed and serviced every three to four months – something which proved to be disruptive to the production sequence since it involved three specialists working for a week in each case. The highly wear-resistant FA 30 submersible pump installed by Wilo, on the other hand, achieved a lifetime of more than one year, and was replaced by two fitters in two days.

Special materials reduce life cycle costs.

Special materials are available for demanding chemical and mechanical loads, thereby significantly increasing the lifetime of a pump. When faced with aggressive or abrasive media, the unique Wilo coatings Ceram or chilled iron alloys ensure longer lifetimes and a remarkable increase in efficiency.



Ceram coating

Solvent-free, extremely abrasion-proof and corrosion-resistant coating for protection against aggressive fluids and wear.



Abrasit

Reduces default risk caused by high mechanical wear.



Sintering water process, Salzgitter
Flachstahl AG, Salzgitter, Germany



Water jet door cleaning system in
cokes utility, raw water intake, water
transport, Steel Manufacturing, Pohang,
South Korea



Steel melting, water supply, circulation
and cooling process, Metal Manufacturing,
Lapagna Orissa, India



Water transport and cooling water, Steel
Plant Bhilai, Chattisgarh, India



Cooling towers, ispart, steel producer/
hot rolled coils, Dolvi, Alibaug, Maha-
rashtra, India



Supply of drinking, process and cooling
water, blow down pumps and settling
tanks, SSF Feed pumps Steel Ltd., Jam-
shedpur, Jharkhand, India



Worldwide service guaranteed wherever and whenever you need Wilo.

Greater operational reliability thanks to efficient technology and reliable service

Operational reliability is crucial in metal industries. Depending on the installation situation and the cause of the failure, any repairs necessary are made to the system on site or at a Wilo factory site. After the repair work is complete, a test run is done and everything is documented in a comprehensive service report. Wilo spare parts provide the highest quality and are available quickly in an emergency. Our international structure means that we're available on site almost anywhere. Whenever you need us, we can help quickly and in person in any phase of project planning, even years after initial commissioning. Make the most of the range of services that we can provide almost anywhere in the world.

Initial commissioning together with experts from the manufacturer

Having specialists from Wilo commission your system puts your mind at ease right from the start. All installation work is carried out using the latest technology and with strict adherence to all the necessary formalities. The results of the subsequent functional inspections and test runs are documented for you in detail.

Practical user training provides know-how for everyday use

With our individualised on-site training or in one of our Wilo Academies we will prepare your employees for daily operations and reliable supervision of new pumps and systems.

Thoroughly examining each detail in the regular system check

Regular maintenance of the pumps in the system often prevents unnecessary costs for expensive repairs or even standstill. Functional checks carried out by professionals identify faults and wear in good time. In addition, regular inspections ensure optimum energy use, increase operational reliability, and lengthen the system's service life.



The advantages for you: Wilo Service worldwide

- more than 1500 Wilo technicians
- available in more than 60 countries
- customer driven solutions
- excellent supply performance
- fast and in best quality



Our pumps are installed and fully connected by qualified construction personnel with many years of experience.

Customised solutions, an optimal system for each application.

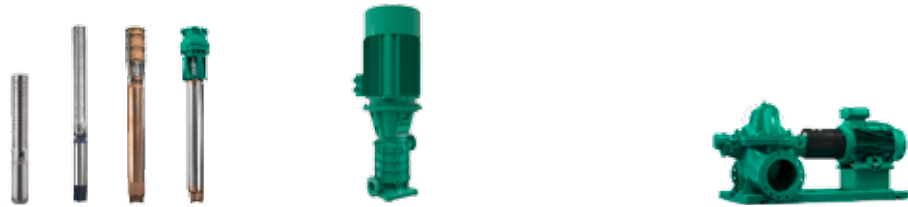




- 1 Raw Water Intake
- 2 Processing
 - Conditioning
 - Air pollution control
 - Descaling
 - Boiler feed
 - Heat transfer
- 3 Water Treatment
 - Filtration
 - Softening
 - Desalination
 - Disinfection
- 4 Wastewater Treatment
- 5 Cooling

Product solutions for mining applications

thanks to excellent technology from Wilo.



Product range	Submersible pumps	Ring section pump	Axially split case pumps
Series	Wilo-Mivo TWI 4- 10 ... Wilo-Zetos 6"-24"	Wilo-Zeox First V	Wilo-SCP
Design	Submersible pump	Multistage high-pressure centrifugal pump in sectional construction, mounted on baseplate	Low-pressure centrifugal pump with axially split housing mounted on a baseplate
Application	1	2 3	1 5
Volume flow Q max.	2,400 m ³ /h	280 m ³ /h	3,400 m ³ /h
Delivery head H max.	560 m	190 m	245 m



Product range	Special glanded pumps in in-line design	Submersible pump	Submersible sewage pumps
Series	Wilo-VeroLine-IPH-W Wilo-VeroLine-IPH-O	Series Norma V	Wilo-EMU FA 30 ... to FA 60 ...
Design	Glanded pump in in-line design with flange connection	Single-stage submersible pump with pump hydraulics as per EN 733	Submersible sewage pump with glanded motors or self-cooling motors
Application	2 3 5	1 4	1 4
Volume flow Q max.	80 m ³ /h	200 m ³ /h	7,950 m ³ /h
Delivery head H max.	38 m	100 m	87 m



Vertical turbine pumps

Serie VMF, CNE, VAF

Vertical turbine pumps for dry well installation with submerged axial or semi-axial hydraulics

1 5

40.000 m³/h

450 m

Standard glanded pumps

Wilo-CronoNorm NL/NLG,
Wilo-VeroNorm-NPG

Single-stage low-pressure centrifugal pump with axial suction, according to EN 733, mounted on a baseplate

1 2

3,000 m³/h

140 m

Vertical, multistage centrifugal pumps

Wilo-Helix EXCEL

Non-self-priming, highly efficient, fully stainless steel, high-pressure multistage centrifugal pump with EC motor in vertical design with integrated high-efficiency drive and in-line connections

2 3

800 m³/h

160 m

Multi-pump pressure boosting systems

Wilo-SiBoost Smart Helix EXCEL

Highly efficient pressure boosting system with 2 to 4 stainless steel, nonself-priming, high-pressure multistage centrifugal pumps switched in parallel, including Smart Controller SC (available with and without frequency converter FC)

2 3

132 m³/h

158 m



Submersible mixer

Wilo-EMU TR
Wilo-EMU TRE

Slow-running submersible mixer with two-stage planetary gear reduction

4

Thrust: 390 - 4950 N

Glanded high-efficiency pumps in in-line design

Wilo-Stratos GIGA

High-efficiency in-line pump with EC motor, electronically controlled, with flange connection, in glanded design

2 5 3

120 m³/h

52 m

Pressure boosting system for fire fighting

Wilo-SiFire EN

Designed specifically for sprinkler systems, with 1 or 2 base plate pumps equipped with electrical or diesel motors, and fully compatible with EN 12845

2

750 m³/h

130 m

Control devices

Wilo-Control

Wilo-Control products for the connection of pumps to building or process automation. Switch gears for controlling one or more pumps with or without integrated variable speed control.



XXXX

Pioneering for You

WILO SE
Nortkirchenstraße 100
D-44263 Dortmund
Germany
T +49 231 4102-0
F +49 231 4102-7363
wilo@wilo.com
www.wilo.com