

An aerial night view of a city skyline, likely Dubai, featuring illuminated skyscrapers and a complex highway interchange. The Burj Khalifa is visible on the right side of the image. The scene is lit with a mix of warm yellow lights from the buildings and roads, and cooler blue and teal tones from the sky and some building facades.

wilo

COMPANY PROFILE

WILO BRINGS THE FUTURE.



We are Wilo

Our company history dates back to the year 1872. Today WILO Group is one of the world's leading premium providers of pumps and pump systems for the building technology, water and industrial sectors.

The extensive product range extends from high-efficiency pumps designed for houses, apartment blocks and commercial buildings, via special pumps and agitators for use in water management, through to products and solutions for industrial applications such as large cooling water pumps for power plants

Wilo is setting new standards as an innovation leader. We offer our customers tailored products with a high level of system efficiency and maximum energy conservation. Our goal is to make this as individual as necessary and as efficient as possible.

With smart solutions that connect people, products and services, the Wilo Group is on the way to becoming the digital pioneer in the sector. The company has around 7,700 employees.

Our Vision

Wilo, the water solution leader for a smart and resource efficient world.

Our Mission

Inventing and managing responsible water solutions that benefit everyone, everywhere.

THE WILO MEGATRENDS

Thinking 20 years ahead

As part of its long-term strategic planning, Wilo has defined six megatrends that are particularly important for the Group's current and future business. Globalisation, urbanisation, climate change and water and energy shortages are worldwide developments that will significantly influence people's lives and societies in the coming decades. Wilo sees this as the creation of metropolitan areas where elements and aspects of life are digitally and intelligently connected. A smart urban area uses information and communication technology to improve people's quality of life. Intelligent, innovative infrastructures help to make mobility more efficient, conserve resources and reduce negative effects on the environment. Smart urban areas are arising not only in the familiar big cities in mature markets, but also increasingly in emerging economies. Wilo has identified smart urban areas as offering business potential and will systematically tap into new business areas here. This strategy goes hand in hand with the intensive digitalisation of the Group. Wilo aspires to establish itself as a digital pioneer of the pump industry and to evolve into the leading system provider with tailored, intelligent, and resource-efficient solutions in line with the



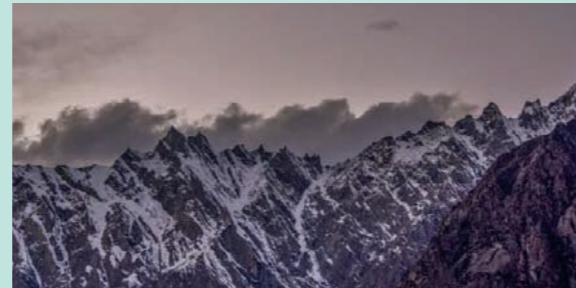
Globalization



Urbanization



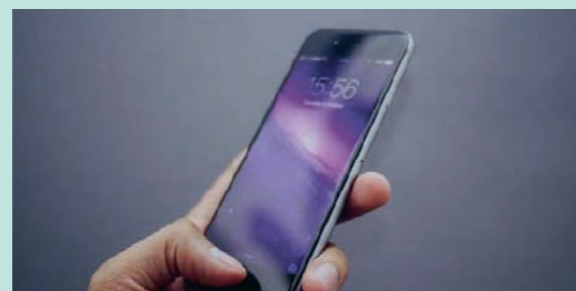
Energy shortage



Climate



Water shortage



Digital transformation

What we do for you

The Wilo Group operates in the Building Services, Water Management and Industry market segments. The portfolio of products, system solutions and services is systematically tailored to the needs of customers in these three market segments. The clear focus, impressive innovative strength and proximity to customers thanks to a local presence are key success factors. The Wilo Group is therefore able to identify different and changing requirements around the world at an early stage and to respond quickly and flexibly.

TOGETHER WE ACCELERATE OUR PROFITABLE GROWTH AS A WORLDWIDE SOLUTION PROVIDER



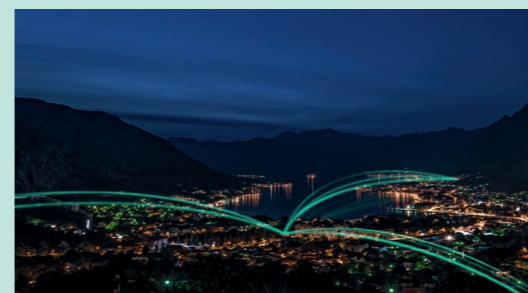
BUILDING SERVICES RESIDENTIAL

We are full-range supplier and customer's first choice



BUILDING SERVICES COMMERCIAL

We are market innovation and smart solution leader



OEM

We are preferred partner for smart integrated solutions.



WATER MANAGEMENT

We are global market player and digital solution provider.

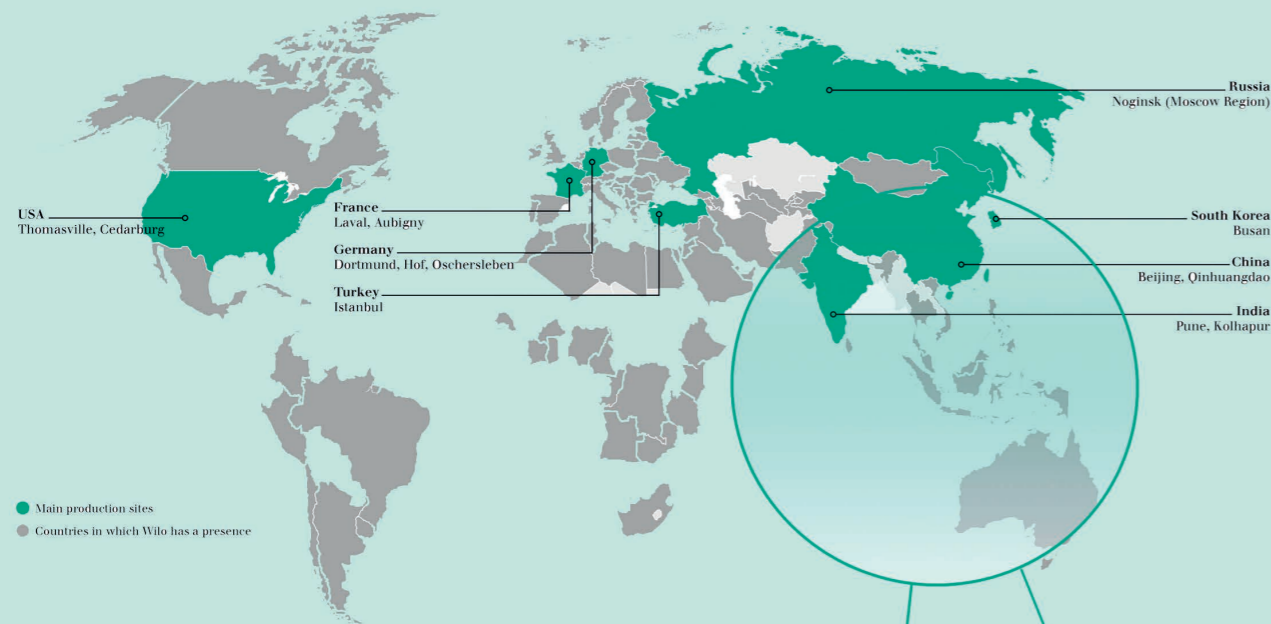


INDUSTRY

We are specialist in selected branches and applications.



Our locations around the world



The Wilo Group manufactures pumps and pump systems at 13 primary production locations in Europe, Asia and America. In accordance with the global production strategy (GPS), the production sites at these locations constitute the production network in the narrower sense. They are coordinated and managed accordingly. The products for local markets are assembled at a variety of locations. This ensures that local requirements can be met efficiently with the fastest possible delivery to customers.

The Wilo Group therefore has an efficient, customer-oriented network with currently more than 70 production and sales companies in over 50 countries. In combination with numerous additional branches and independent sales and service partners, this ensures that customers needs and requirements are met at all times and to the highest standards of quality worldwide.



We are expanding the head quarters in Dortmund into the Wilo's top digital location

On a site of more than 190,000 square metres at its headquarters in Dortmund, Wilo is implementing the production of the future with a smart factory and creating new working worlds that meet the requirements of the future.

Flexible supply chain & worldwide expertise

Our Pune/Kolhapur Factories

- Site: 26,300/40,300 m²
- Floor: 10,300 m²/8,050 m²
- Lead engineering VT/SCP
- Test bench capacity 60,000 m³/h
- Largest vertical turbine & split case manufacturer in the group (up to 3.6 MW)

Our Beijing Factory

- Site: 48,370 m²
- Floor: 26,220 m²
- Wilo global PBU water transfer
- 6 test benches up to 30,000 m³/h capacity
- Production capacity MHI: 180,000 units/year
- MVI: 65,000 units/year



Production site for sustainable innovation and customer satisfaction

Our Busan Factory

- Turnover 167 m EUR in 2017 (213 b KRW)
- Export more than 50 countries
- 437 employees
- Korean "Green building certificate"
- Site: 51,670 m²
- Floor: 31,890 m²
- The best equipped machining, assembly and testing facilities for big-sized pumps
- Production capacity 1,000,000 sets for HH pump/year
- 100,000 sets for CM pump/year



Building Services Residential

We offer greater convenience and safety for basic pump in domestic water supply.



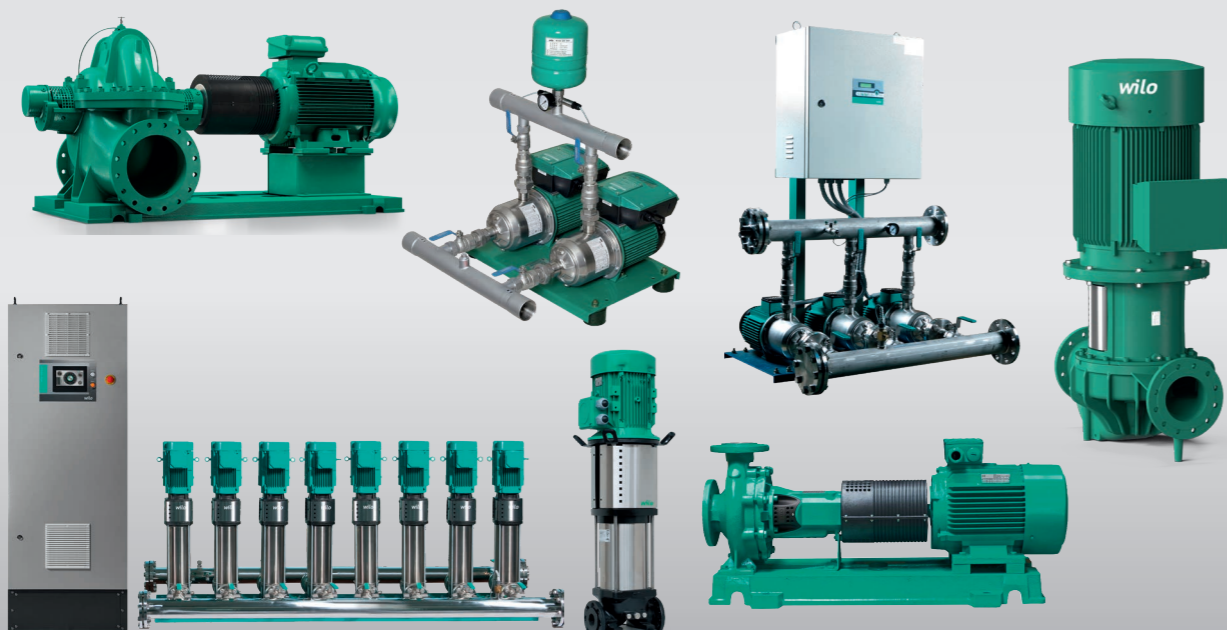
Industry

We offers a variety of industrial solutions and products that are highly efficient, safe and reliable.



Building Services Commercial

We offers intelligent and innovative solutions with HVAC, water supply, and drainage and



Water Management

We offer professional solutions designed to meet the complex requirements for water management



Achieving more together

International Networking and Certifications

As a global company, we have the best connections across the entire globe. We know – together we can achieve and change much more than we can alone.

Wilo is a member of various national and international associations, organisations and networks.



**By people,
for people**

We bear responsibility –
towards our customers, society, the common good and the environment. Responsible trading and social engagement are inseparable to us.

We are engaged –
that is why we support numerous international and national corporate citizenship programs for culture, education and development aid.



OUR LOCAL REFERENCES



NorthGate DCS
Alabang, Philippines



Philippine National Museum
Ermita Manila, Philippines



Therma South Inc.
Toril Davao City, Philippines



Dancing Fountain
Vigan Ilocos Sur, Philippines



Bulacan Flood Control Pumps
Meycauayan Bulacan, Philippines



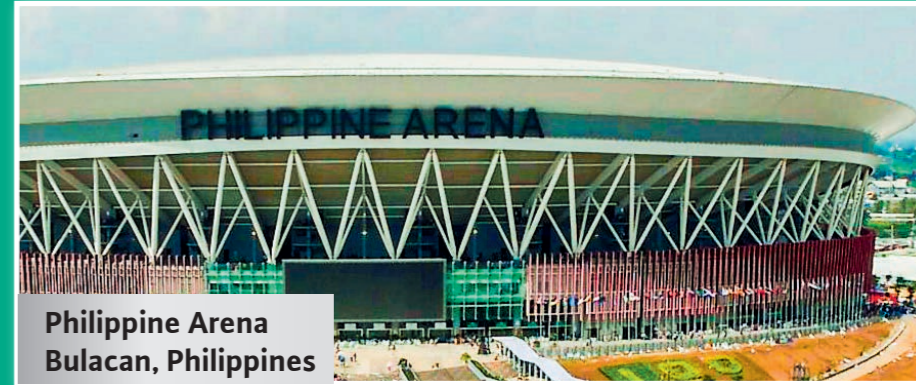
Hanjin Shipyard
Subic Zambalez, Philippines



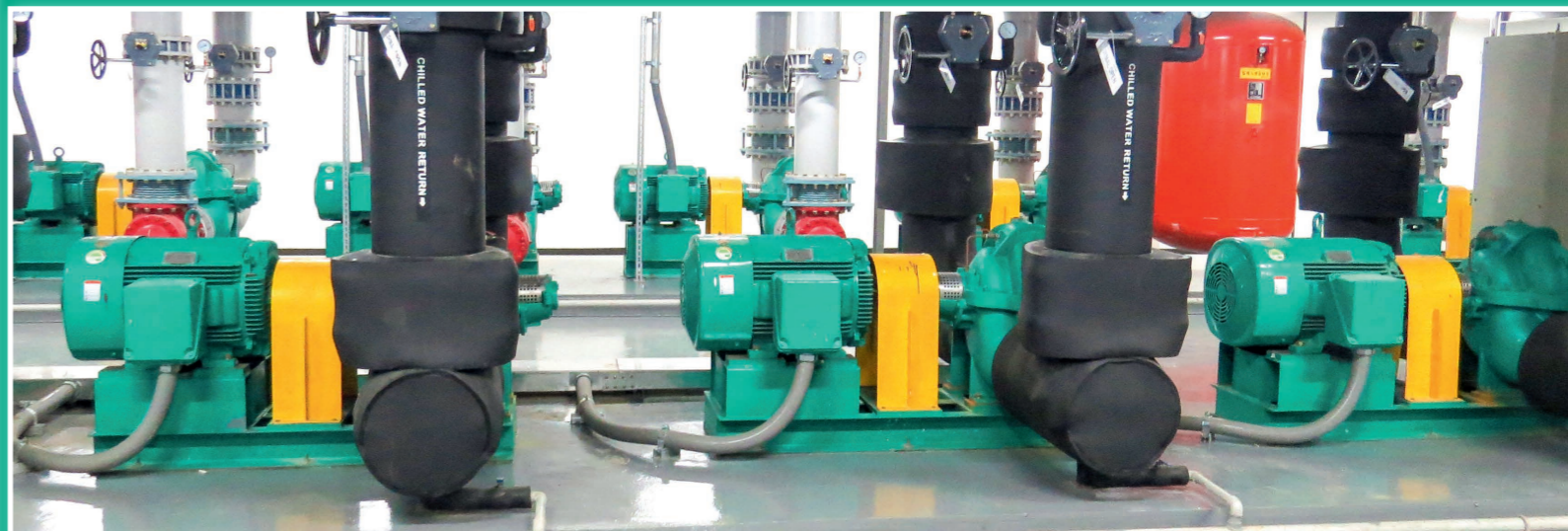
Glorietta Mall
Makati, Philippines



Alabang Town Center
Alabang Muntinlupa, Philippines



Philippine Arena
Bulacan, Philippines



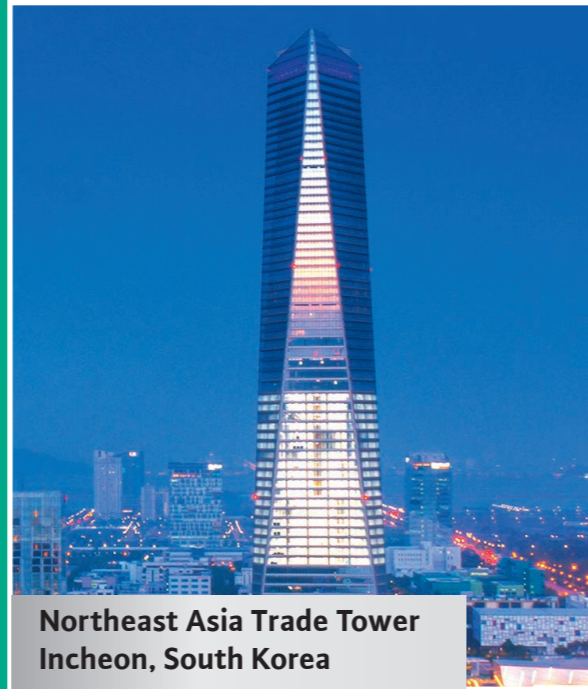
Carmen Copper
Toledo Cebu City, Philippines

Our Philippine References

All over the the Philippines, new growth of emerging and existing markets are changing. The demand for high quality products and technologies present. We are taking advantage of these opprotunities.



Federation Tower
Moscow, Russia



Northeast Asia Trade Tower
Incheon, South Korea

Our Worldwide References

Pumps from Wilo are used worldwide - from data centre to expensive private real state, facilities for commercial air transport, rapid transit rail network, shopping malls and large factories.



Incheon International Airport
Incheon, South Korea



Anpara Power Station
Anpara, India



Dubai Metro
Dubai, United Arab Emirates



Google Data Center
Hamina, Finland

wilo

Pioneering for You

WILO SE

8F Unit 810 The Infinity
25th Street, Bonifacio Global City
Taguig 1634, Philippines
T +63 2 553 4016
F +63 2 553 0544
sales@wilo-philippines.com
www.wilo.com