

Pioneering for You

**wilo**

Serving the water cycle

# Efficient solutions for Water Management.





# Pioneering for You.

## **Our promise to you.**

WILO SE is one of the world's leading premium suppliers of pumps and pump systems for building services, water management, and the industrial sector. With over 8.000 employees in more than 60 subsidiaries around the world, we develop smart solutions that connect people, products and services to effectively support you in your daily work. "Pioneering for You" is our lasting commitment to clear customer focus, unrelenting pursuit of quality and our special passion for technology.

As the digital pioneer of the pumps industry, we understand the challenges that will shape the future. As an innovation and technology leader, we provide integrated solutions to address them. We know that these issues play a major role in your daily work – and in turn, they play a major role in ours.

## **Sustainably better for you.**

One of the most pressing tasks in times of limited natural resources is the responsible management of increasingly scarce resources. Efficiency, connectivity and safety will become more and more important in the future. We aspire to offer you sustainable, user-friendly, high-tech and high-performance solutions for building services and water management that are ahead of their time.

We work closely with customers like you to create innovative products and systems that perfectly meet your requirements and are rounded off with convenient services. The result is integrated solutions you can rely on at all times.





## From water supply to sewage treatment

### The partner for tailored system solutions.

The requirements for municipal water management are complex and constantly increasing. Wilo is the system expert, supporting its partners in all areas with tailored solutions. Our pumps, systems and solutions are characterised by maximum operational reliability and sustainable energy efficiency. Our customers benefit from our decades of experience and the latest know-how for future-proof water supply and sewage disposal. We provide comprehensive support from design to implementation, even for complex projects.

#### **Comprehensive solutions for the water cycle.**

The global water shortage means that water as a raw material is one of the most precious commodities. The uninterrupted supply of clean water for drinking, for agriculture and for industry is one of the greatest challenges we face, both today and in the future.

Wilo's aim is to offer customised system solutions for this: With comprehensive solutions from a single source, offering a maximum level of safety and cost-effectiveness at all project levels.

Wilo supports both supply and disposal companies in a targeted manner until the joint project is successful: from design and documentation to personal involvement on site for commissioning and maintenance.



Immerse yourself in the  
world of water at Wilo.



# Efficient water supply

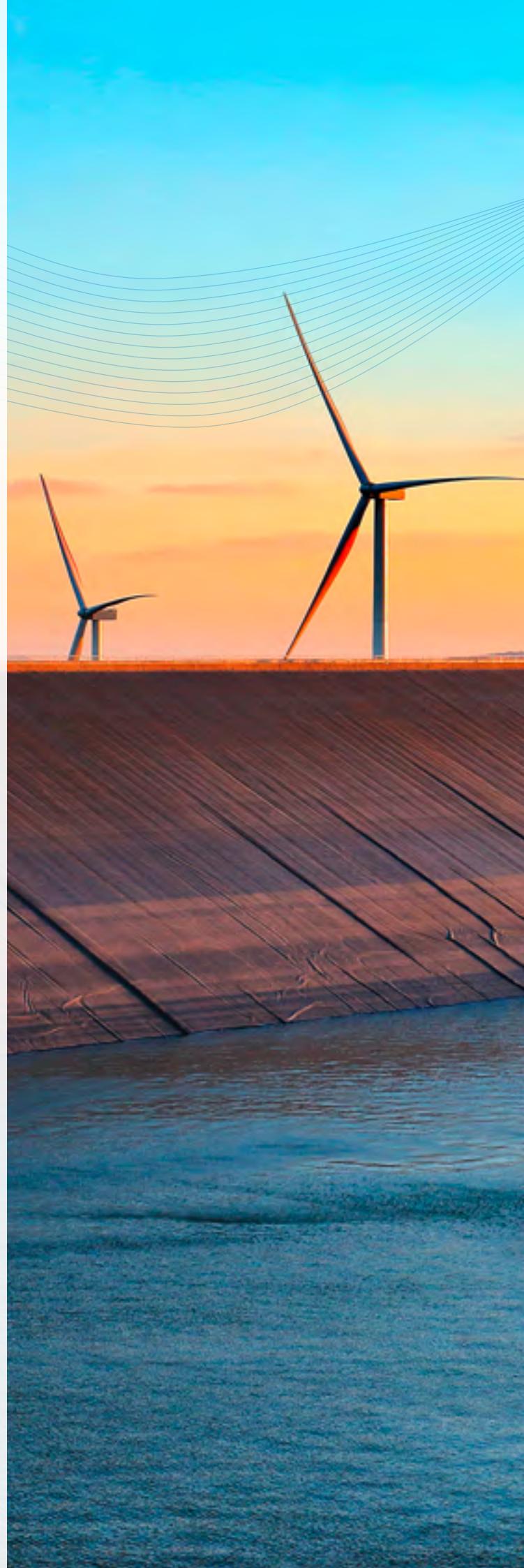
## System solutions for reliable and efficient water supply.

Supplying water has always been one of the great challenges in human history. Climate change, increasing demands on water quality and the growth of the world's population make this important task even more challenging in today's world. With intelligently digitalised and energy-saving pump systems, Wilo helps make sure that raw water intake, treatment and supply are comprehensive and future-proof.

### OUR SOLUTIONS

for efficient water supply:

- Highly efficient and thus energy-saving pump systems
- Pumps, accessories and services for the entire water cycle
- Digitalised products to optimise supply processes





## Raw water intake and pumping

With minimum energy costs to maximum security of supply.

The sustainable and future-proof water supply for domestic households, industry and agriculture is a big challenge in the face of dwindling resources, growing demands on water and fluctuating ground water levels. Thanks to Wilo's pumps, system solutions and services, you can overcome it.

We're your professional partner, supporting you at every phase of your project from design and dimensioning to commissioning and maintenance.

### OUR SOLUTIONS

for pumping raw water:

- Pumps with high-efficiency motors and variable-speed drives to meet individual requirements
- Innovative Ceram CT coating technology for increased efficiency as a result of lower flow losses
- Frequency converter for variable speed control

### OUR HIGHLIGHT PRODUCT: Wilo-Actun ZETOS

- Energy-efficient water supply, thanks to a pump efficiency of up to 85.5 %
- Cost-efficient operation, thanks to the highest overall efficiency in this class with permanent magnet motor
- High reliability thanks to particularly corrosion-resistant hydraulics made completely of 1.4408 grade stainless steel investment casting (AISI 316)
- High wear resistance: max. sand content of 150 g/m<sup>3</sup>
- ACS approval for use with drinking water



Learn more about  
our solutions for  
raw water intake!





## Agricultural irrigation systems

Minimise energy costs,  
maximise income.

Dry periods, reduced ground water levels, rising energy costs – against this backdrop, farms need a water supply that creates future prospects. Wilo pump systems meet this requirement in several aspects: With individual solutions characterised by maximum efficiency and availability.

### OUR SOLUTIONS

for commercial irrigation:

- Extensive range of norm, monobloc, split-case and vertical turbine pumps
- Solar submersible pumps for self-sufficient energy supply
- Solutions for optimal volume flow – from 0.5 m<sup>3</sup>/h to 50,000 m<sup>3</sup>/h
- Pumps for high sand content of up to 150 g/m<sup>3</sup>

### OUR HIGHLIGHT PRODUCT:

#### Wilo-Atmos GIGA-N

- Energy-saving thanks to increased overall efficiency through improved hydraulics and the use of IE3 motors
- Suitable for drinking water supply (ACS-, UBA- compliant)
- Cataphoretic coating of all cast components for high corrosion resistance and long service life (not available for the drinking water version)
- Universally usable thanks to standardised dimensions, a range of motor options and impellers made of different materials



Learn more about  
our solutions for  
agricultural irrigation!



Learn more about  
our solutions for  
drinking water supply!



## Modern drinking water supply

Optimum pressure, high energy efficiency, protection from leakage.

With Wilo, utility companies guarantee a reliable supply of water 365 days of the year. Energy-saving, cost-effective, digitalised and protected against leakage.

Whether it's large volume flows, distances, height differences or fluctuating needs and pressures, Wilo's intelligent and comprehensive solutions meet all requirements.

### OUR SOLUTIONS

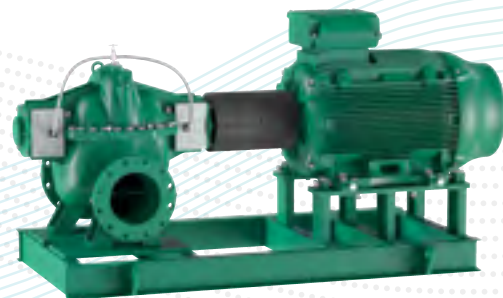
for water distribution:

- Pump systems with variable speed for optimal water pressure
- Pumps with drinking water approval certifications – including ACS, UBA, GVGW, W270
- Digital monitoring with interfaces suitable for your system

### OUR HIGHLIGHT PRODUCT:

#### Wilo-Atmos TERA-SCH

- Reliable continuous duty for an efficient drinking water supply over extensive piping networks – can be tailored to suit your exact requirements
- Reduced energy costs through high overall efficiency
- Simplified and shorter alignment process thanks to tolerant coupling and motor adjusting device
- Increased operational reliability thanks to quiet-running hydraulics with lower vibrations and reduced noise level
- Reduced cavitation tendency through optimised NPSH-performances





# Sewage and wastewater disposal

## Reliable and energy-saving system solutions.

Significantly increasing requirements with cost pressure at the same time – wastewater and sewage disposal will have to be more intelligent, environmentally-friendly and reliable in the future. For this, Wilo has developed innovative process solutions and an ultra-modern, comprehensive product portfolio, thus creating new strategic possibilities for operators of wastewater treatment plants and wastewater companies.

### OUR SOLUTIONS

for wastewater and sewage disposal:

- Long-term reliable pumping stations ready for operation
- Efficient products for dewatering and flood control
- Digitally supported processes for increased cost-effectiveness
- Comprehensive service – from design to maintenance







# Wastewater collection and transport

## For reliable and energy-efficient processes.

A reliable and safe sewage system is an increasingly demanding challenge. Wilo provides the comprehensive know-how, the services and, above all, the energy-efficient pump systems that meet the requirements and are characterised by process reliability, durability and intelligent control and networking.

### OUR HIGHLIGHT PRODUCT: Wilo-Rexa SOLID-Q with Nexos Intelligence

- Maximum operational reliability and reduced service costs, especially for pumping untreated sewage, thanks to self-cleaning properties
- Lower energy costs thanks to high hydraulic efficiency and up to IE5 motor technology in wet and dry well installation (based on IEC TS 60034-30-2)
- Corrosion protection provided by an optional Ceram coating for a long service life in aggressive media

### OUR SOLUTIONS

for wastewater collection and transport:

- Durable pump systems with intelligent control
- Impellers with maximum hydraulic efficiency
- Highly efficient motors for maximum energy efficiency
- Reliable solids separation systems for maximum operational reliability
- Pressure drainage systems with comprehensive digital connectivity



Learn more about our solutions for wastewater collection and transport!



Learn more about  
our solutions for  
wastewater treatment!



## Wastewater treatment

### Reliable system solutions for wastewater treatment plants.

The challenges faced by your wastewater treatment plant are growing: There is more and more contamination in sewage and wastewater, and at the same time the requirements for water quality following treatment are increasing. In addition, cost pressures are increasing to ensure consistent wastewater charges. As system experts, we draw on our know-how to offer you customised solutions for all wastewater treatment processes. Reduce your operating costs with us, whilst increasing efficiency at the same time.

#### OUR SOLUTIONS

for wastewater treatment:

- Mixer, aeration and pump technology for optimum cleaning results
- Submersible sewage pumps for reliable and complete drainage of the retention tank
- Sewage pumps made of chilled cast iron with an increased chrome content (such as Abrasit) or a featuring Ceram coating for less wear

#### OUR HIGHLIGHT PRODUCT: Wilo-EMU TRE und EFC

- Efficient energy usage. The innovative blade geometry and energy-efficient IE3/IE4 motors ensure the best possible specific thrust coefficient. At the same time, this reduces your energy and operating costs.
- Consistently reliable. The low-wearing GFK/PA6 propeller is durable and scores with its self-cleaning effect.
- Smooth running thanks to the balanced propeller load, even in high thrust ranges and when inflow conditions are unfavourable.







## Drainage and flood control

### Effective and forward-looking solutions.

Municipal sewage, rainwater retention, drainage of excavations and flood control – there's a large range of requirements for safely collecting and discharging water and protecting infrastructures. Wilo provides specific solutions characterised by both a high level of energy efficiency and robustness.

#### OUR SOLUTIONS

for drainage:

- Wastewater pumps for wet or dry well installation
- Systems with highly efficient hydraulics and large free ball passages
- Sewage pumps with submersible motors (protection class IP68, insulation class G)

#### OUR HIGHLIGHT PRODUCT:

##### Wilo-Padus PRO

- High reliability in abrasive fluids thanks to rubber-coated hydraulics and an impeller made of Duplex chrome steel
- Easy installation thanks to low weight and flexible pressure connection (vertical/horizontal)
- Active cooling for reliable continuous operation
- Continuous duty in slurping operation thanks to passive cooling
- Easy maintenance thanks to quick access to wearing parts



Learn more about our solutions for drainage and flood control!

# Wilo-Service

## One partner for all services.

We're by your side for every phase of the project and provide you with comprehensive support – from design and configuration through to commissioning and maintenance. For your sustainable and future-proof water supply. Take advantage of our integrated range of advice, service and systems solutions and benefit from the added value.

### PRE SALES

**We make the design and selection process simple for you.**

- Local support
- Planning support
- Product selection
- Selection programmes
- Pipeline calculation
- Installation drawings
- Documentation

### IN SALES

**Get your purchase right with Wilo.**

- Certification
- Acceptance testing at the plant
- Configuration
- Commissioning
- Start-up

### AFTER SALES

**We are here for you – Even after your purchase.**

- Extensive testing and training period with qualified plant engineers
- Customised, reliable maintenance plans
- Rapid repair service in 60 countries
- Quick, customer-focused spare part solutions
- Efficiency check
- Specialised training courses







Learn more about our service offer!



#### **Wilo-Live Assistant** **Fast, instant help via video chat**

Do you know the Wilo-Live Assistant yet? Using the Wilo-Live Assistant, our expert advisers can support you in the boiler or equipment room via video transmission – live and in real time. You use your smartphone for showing the installation set-up while the Wilo expert observes everything on screen.



#### **Wilo-Energy Solutions** **Our promise for the environment**

With Energy Solutions, we point out possible energy savings and take responsibility for future generations and the fight against climate change. Wilo-Energy Solutions involves using Wilo high-efficiency technology to proactively replace pumps and pump systems which are still functioning but are inefficient.



#### **WiloCare** **Highest operational and cost security**

With WiloCare, we bundle all our maintenance services into a comprehensive package supplemented by remote maintenance of your system. We can take care of error messages, troubleshooting and optimisation thanks to the data transmitted by your pump or system. This way, we can always ensure optimum operation of the system – quickly, reliably and without complications.

#### **FURTHER SERVICES FOR YOUR CONVENIENCE**

- **Wilo-Service Packages**
- **Supervision**
- **Installation**
- **Commissioning**
- **Maintenance**
- **System optimisation**
- **Repair**
- **Spare parts**
- **Extended warranty**

## Awards and achievements

This is what sets us apart.



### SUSTAINABILITY & CLIMATE LEADERS

Wilo is one of “50 Sustainability and Climate Leaders” worldwide. This global initiative highlights international corporations who are supporting a green and sustainable future. Climate change is the defining issue of our time. Enormous economic and societal benefits await humankind if we can rise to the climate challenge. With the goal of providing one hundred million people with access to drinking water by 2025, Wilo is strongly committed to sustainability: Our pumps help to supply people around the world with water in a smart, efficient and climate-friendly way. All “50 Sustainability and Climate Leaders” take effective action in combating climate change and thereby contribute to the Sustainable Development Goals of the United Nations.



### GERMAN SUSTAINABILITY AWARD 2021

Every year, the German Sustainability Award honors pioneering contributions toward transforming our world to secure a more sustainable future. The prize aims to promote networking across borders and encourage partnerships as well as motivate all key players to bring about change. It honors best practice examples of how ecological and social progress can be achieved more quickly.

Wilo has been awarded the renowned German Sustainability Award (Deutscher Nachhaltigkeitspreis, DNP) in the “Climate” transformation field, as sustainability is an integral part of Wilo’s corporate strategy. By replacing outdated technology alone, Wilo high-efficiency pumps could save up to 246 terawatt hours of electricity – the equivalent output of 80 coal power plants.

## Our references for Water Management.



Baobab Children Foundation, Ghana – Using solar power to provide running water



ARA Schönaun, Switzerland – Eliminating micropollutants



Ureki Water Supply, Georgia – Modern standard water supply

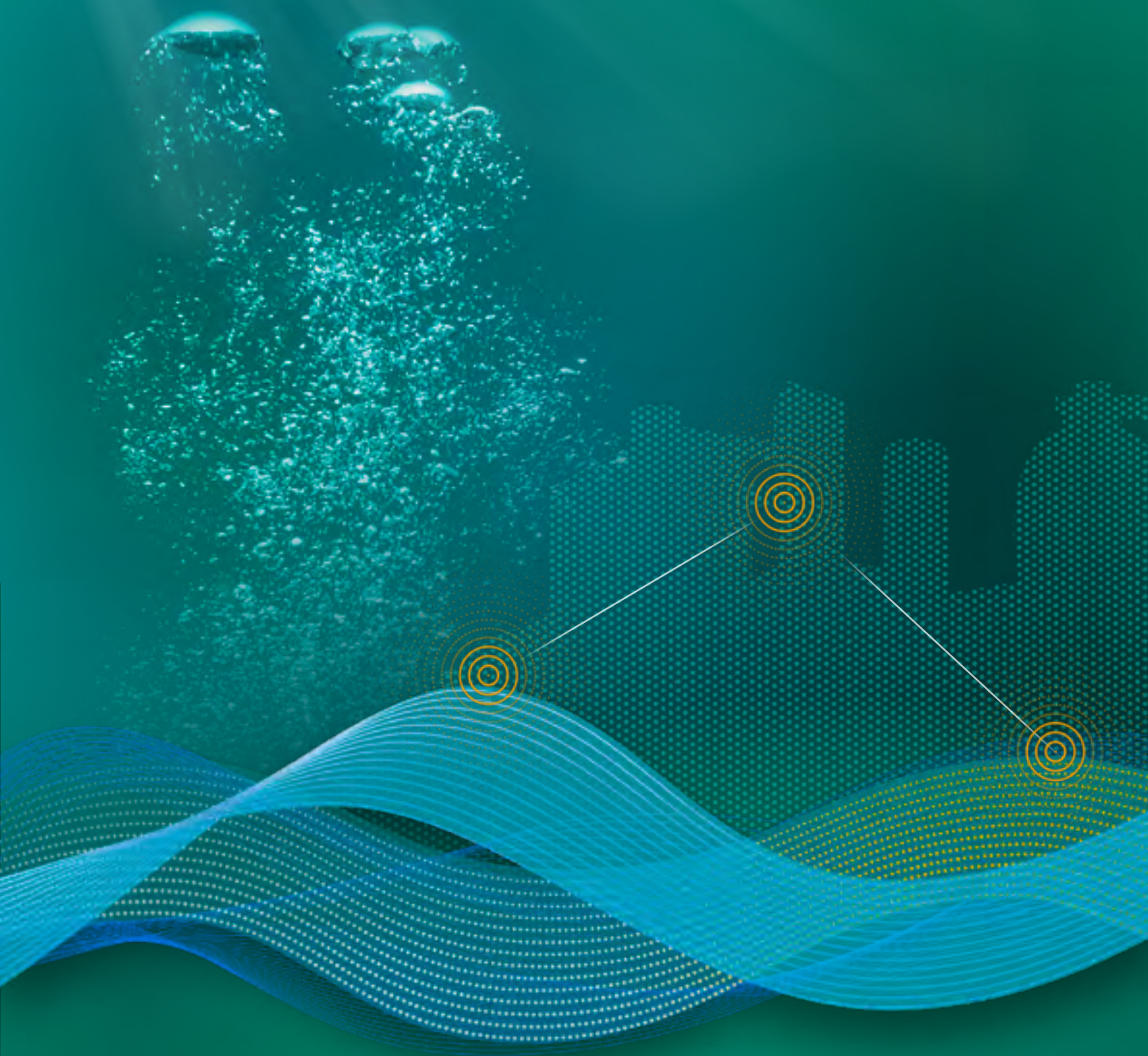


Discover more references!



*wilo*

**CARING FOR WATER.  
WITH PASSION.**



Learn more about  
our solutions along  
the water cycle!

Pioneering for You

*wilo*

WILO SE  
Wilopark 1  
44263 Dortmund

[www.wilo.com](http://www.wilo.com)