



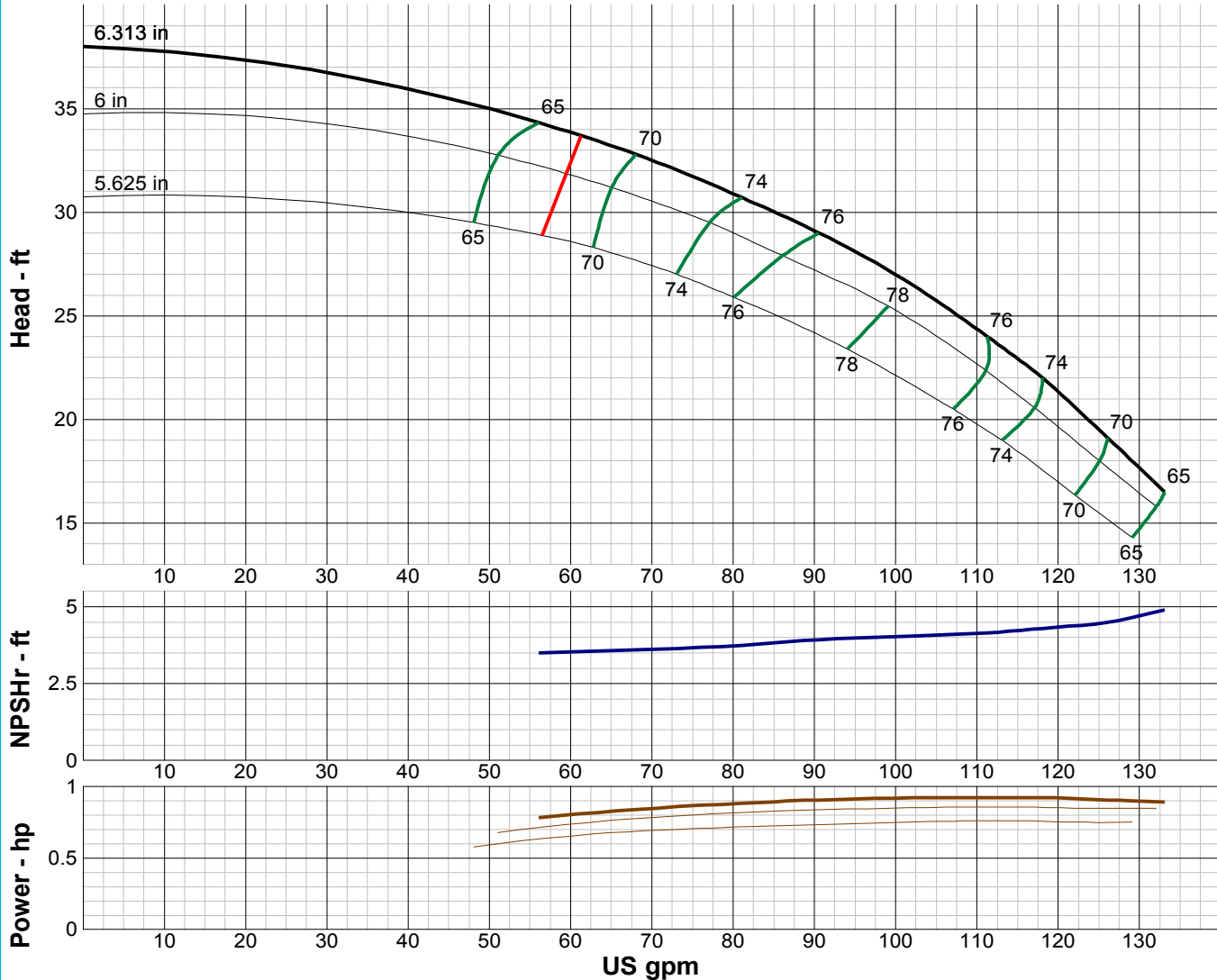
TURBINE PUMP CURVE

SINGLE STAGE PERFORMANCE

JANUARY 2010

480 SERIES

8JS 1760 RPM



IMPELLER DATA

IMPELLER NUMBER	3692	Minimum submergence above eye of bottom impeller: 14 IN.
TYPE	SEMI-OPEN	
THRUST FACTOR	K=3.52	
EYE AREA	3.18 SQ. IN.	
WEIGHT	3.55 LB.	

EFFICIENCY CORRECTION

NUMBER OF BOWLS:	1	2	3		
CHANGE AS FOLLOWS:	-3	-1	0		
CHANGE IN EFFICIENCY MAY AFFECT BOTH HEAD AND HORSEPOWER.					

PUMP MATERIAL EFFICIENCY CORRECTION

	DUCTILE	BRONZE	NI-R	STAINLESS
IMPELLER MATERIAL:	-2	0	-1	-2
BOWL MATERIAL:	-2	-2	-2	-5

FLANGED BOWL DATA

BOWL NUMBER	3629
BOWL MAX. DIAMETER	7.813 IN.
BOWL MIN. DIAMETER	7.500 IN.
MAX. NO. STAGES	42
ONE STAGE WEIGHT	130 LB.
ADD STAGE WEIGHT	30 LB.
STD. SHAFT DIA.	1.000 IN.
STD. LATERAL	0.438 IN.
DISCHARGE SIZE	5 - 6 IN.
DISCHARGE CONNECTION	THD - FLG
SUCTION SIZE	5 - 6 IN.
SUCTION CONNECTION	THD
MAX. SPHERE SIZE	0.250 IN.
MAX. OPERATIONAL P.S.I.	692 (SPECIAL)

Performance based on pumping clear, fresh water at a temperature not over 85° F., free of gas, air or abrasives and with bowls properly adjusted and submerged. Performance curve reflects Hydraulic Institute tolerances and guidelines.



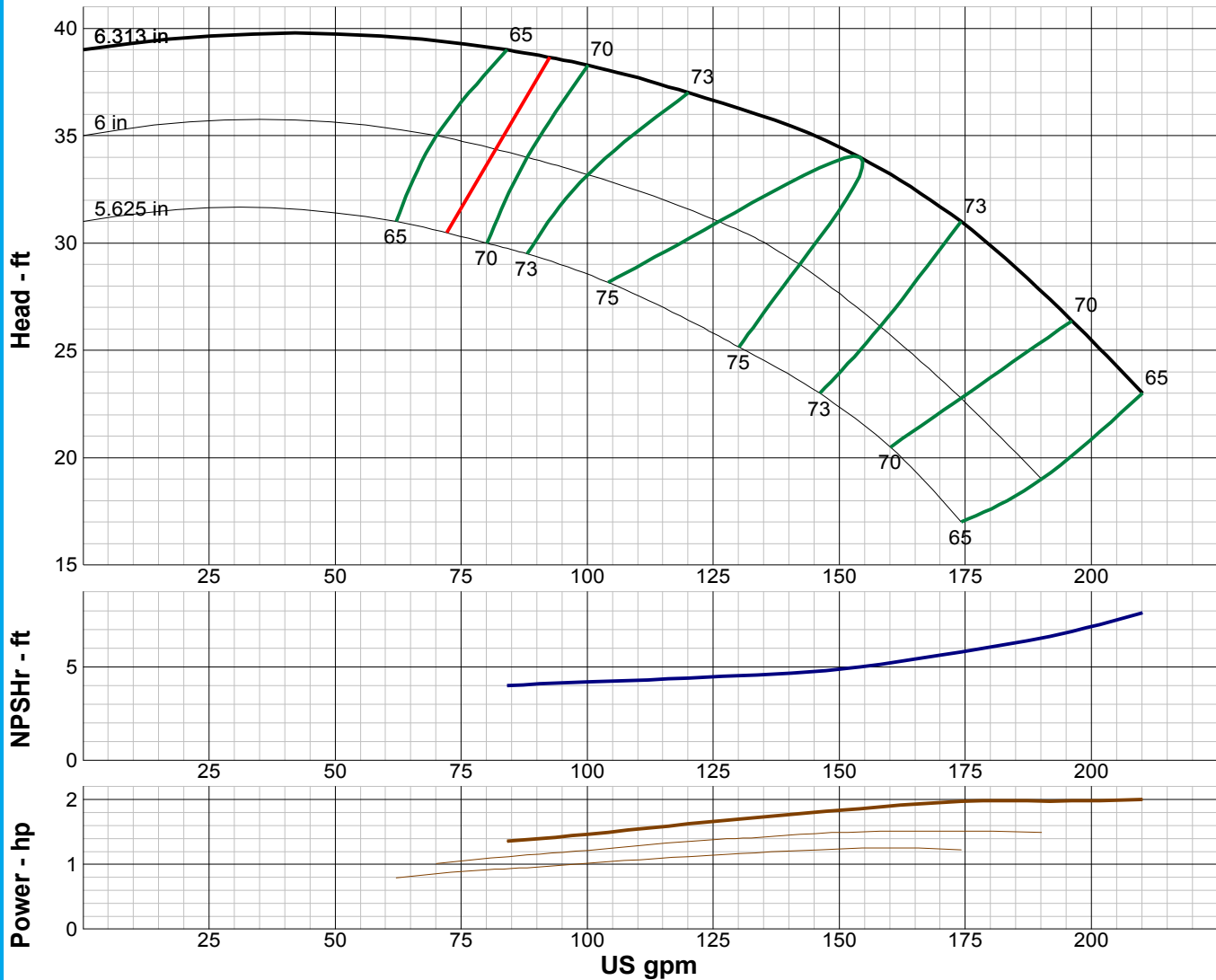
TURBINE PUMP CURVE

SINGLE STAGE PERFORMANCE

JANUARY 2010

480 SERIES

8LS 1760 RPM



IMPELLER DATA		
IMPELLER NUMBER	3641	Minimum submergence above eye of bottom impeller: 14IN.
TYPE	SEMI-OPEN	
THRUST FACTOR	K=3.34	
EYE AREA	4.64 SQ. IN.	
WEIGHT	4.25 LB.	

EFFICIENCY CORRECTION				
NUMBER OF BOWLS:	1	2	3	
CHANGE AS FOLLOWS:	-4	-2	0	
CHANGE IN EFFICIENCY MAY AFFECT BOTH HEAD AND HORSEPOWER.				

PUMP MATERIAL EFFICIENCY CORRECTION				
	DUCTILE	BRONZE	NI-R	STAINLESS
IMPELLER MATERIAL:	-2	0	-1	-2
BOWL MATERIAL:	-2	-2	-2	-5

FLANGED BOWL DATA	
BOWL NUMBER	3629
BOWL MAX. DIAMETER	7.813 IN.
BOWL MIN. DIAMETER	7.500 IN.
MAX. NO. STAGES	37
ONE STAGE WEIGHT	130 LB.
ADD STAGE WEIGHT	30 LB.
STD. SHAFT DIA.	1.000 IN.
STD. LATERAL	0.438 IN.
DISCHARGE SIZE	5 - 6 IN.
DISCHARGE CONNECTION	THD - FLG
SUCTION SIZE	5 - 6 IN.
SUCTION CONNECTION	THD
MAX. SPHERE SIZE	0.250 IN.
MAX. OPERATIONAL P.S.I.	692 (SPECIAL)

Performance based on pumping clear, fresh water at a temperature not over 85° F., free of gas, air or abrasives and with bowls properly adjusted and submerged. Performance curve reflects Hydraulic Institute tolerances and guidelines.



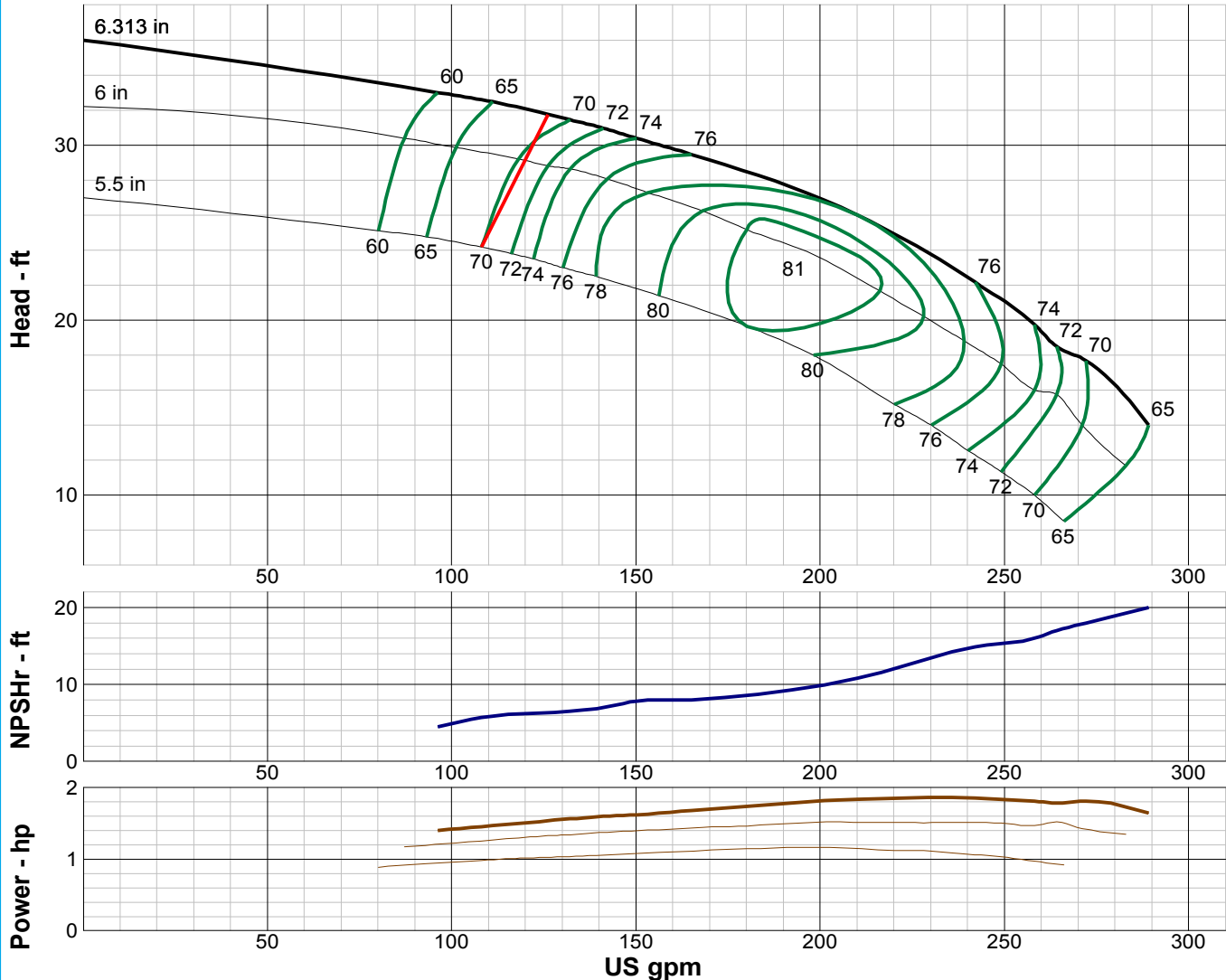
TURBINE PUMP CURVE

SINGLE STAGE PERFORMANCE

JANUARY 2010

480 SERIES

8KS 1760 RPM



IMPELLER DATA

IMPELLER NUMBER	3693	Minimum submergence above eye of bottom impeller: 20 IN.
TYPE	SEMI-OPEN	
THRUST FACTOR	K=4.42	
EYE AREA	6.60 SQ. IN.	
WEIGHT	3.75 LB.	

EFFICIENCY CORRECTION

NUMBER OF BOWLS:	1	2	3		
CHANGE AS FOLLOWS:	-3	-1	0		
CHANGE IN EFFICIENCY MAY AFFECT BOTH HEAD AND HORSEPOWER.					

PUMP MATERIAL EFFICIENCY CORRECTION

	DUCTILE	BRONZE	NI-R	STAINLESS
IMPELLER MATERIAL:	-2	0	-1	-2
BOWL MATERIAL:	-2	-2	-2	-5

FLANGED BOWL DATA

BOWL NUMBER	3591
BOWL MAX. DIAMETER	7.938 IN.
BOWL MIN. DIAMETER	7.500 IN.
MAX. NO. STAGES	37
ONE STAGE WEIGHT	130 LB.
ADD STAGE WEIGHT	30 LB.
STD. SHAFT DIA.	1.000 IN.
STD. LATERAL	0.438 IN.
DISCHARGE SIZE	5 - 6 IN.
DISCHARGE CONNECTION	THD - FLG
SUCTION SIZE	5 - 6 IN.
SUCTION CONNECTION	THD
MAX. SPHERE SIZE	0.375 IN.
MAX. OPERATIONAL P.S.I.	692 (SPECIAL)

Performance based on pumping clear, fresh water at a temperature not over 85° F., free of gas, air or abrasives and with bowls properly adjusted and submerged. Performance curve reflects Hydraulic Institute tolerances and guidelines.



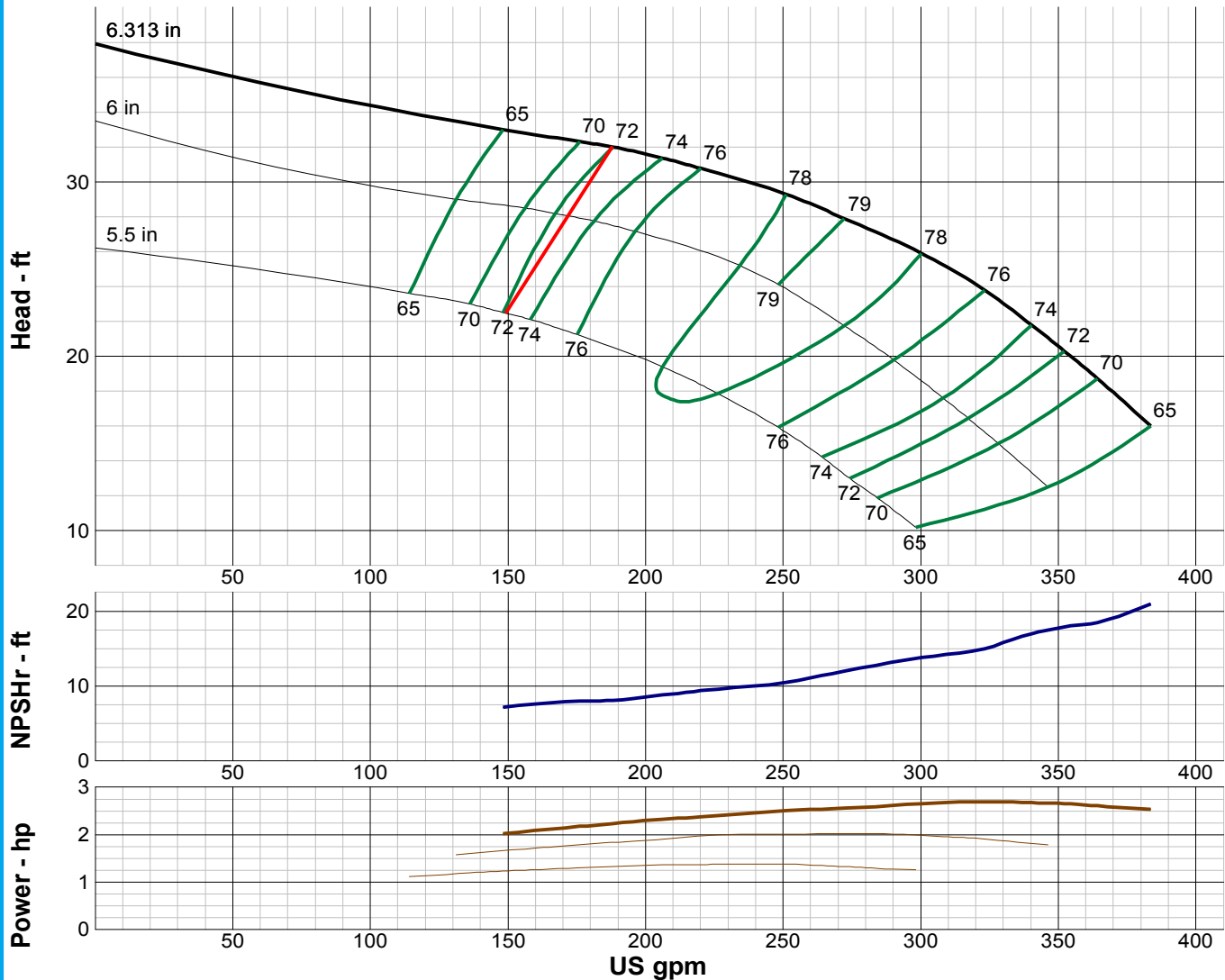
TURBINE PUMP CURVE

SINGLE STAGE PERFORMANCE

JANUARY 2010

480 SERIES

8MS 1760 RPM



IMPELLER DATA		
IMPELLER NUMBER	3590	Minimum submergence above eye of bottom impeller: 24 IN.
TYPE	SEMI-OPEN	
THRUST FACTOR	K=4.28	
EYE AREA	6.60 SQ. IN.	
WEIGHT	4.125 LB.	

EFFICIENCY CORRECTION					
NUMBER OF BOWLS:	1	2	3	4	5
CHANGE AS FOLLOWS:	-4	-3	-2	-1	0
CHANGE IN EFFICIENCY MAY AFFECT BOTH HEAD AND HORSEPOWER.					

PUMP MATERIAL EFFICIENCY CORRECTION				
	DUCTILE	BRONZE	NI-R	STAINLESS
IMPELLER MATERIAL:	-2	0	-1	-2
BOWL MATERIAL:	-2	-2	-2	-5

FLANGED BOWL DATA	
BOWL NUMBER	3591
BOWL MAX. DIAMETER	7.938 IN.
BOWL MIN. DIAMETER	7.500 IN.
MAX. NO. STAGES	23
ONE STAGE WEIGHT	130 LB.
ADD STAGE WEIGHT	30 LB.
STD. SHAFT DIA.	1.000 IN.
STD. LATERAL	0.438 IN.
DISCHARGE SIZE	5 - 6 IN.
DISCHARGE CONNECTION	THD - FLG
SUCTION SIZE	5 - 6 IN.
SUCTION CONNECTION	THD
MAX. SPHERE SIZE	0.375 IN.
MAX. OPERATIONAL P.S.I.	692 (SPECIAL)

Performance based on pumping clear, fresh water at a temperature not over 85° F., free of gas, air or abrasives and with bowls properly adjusted and submerged. Performance curve reflects Hydraulic Institute tolerances and guidelines.



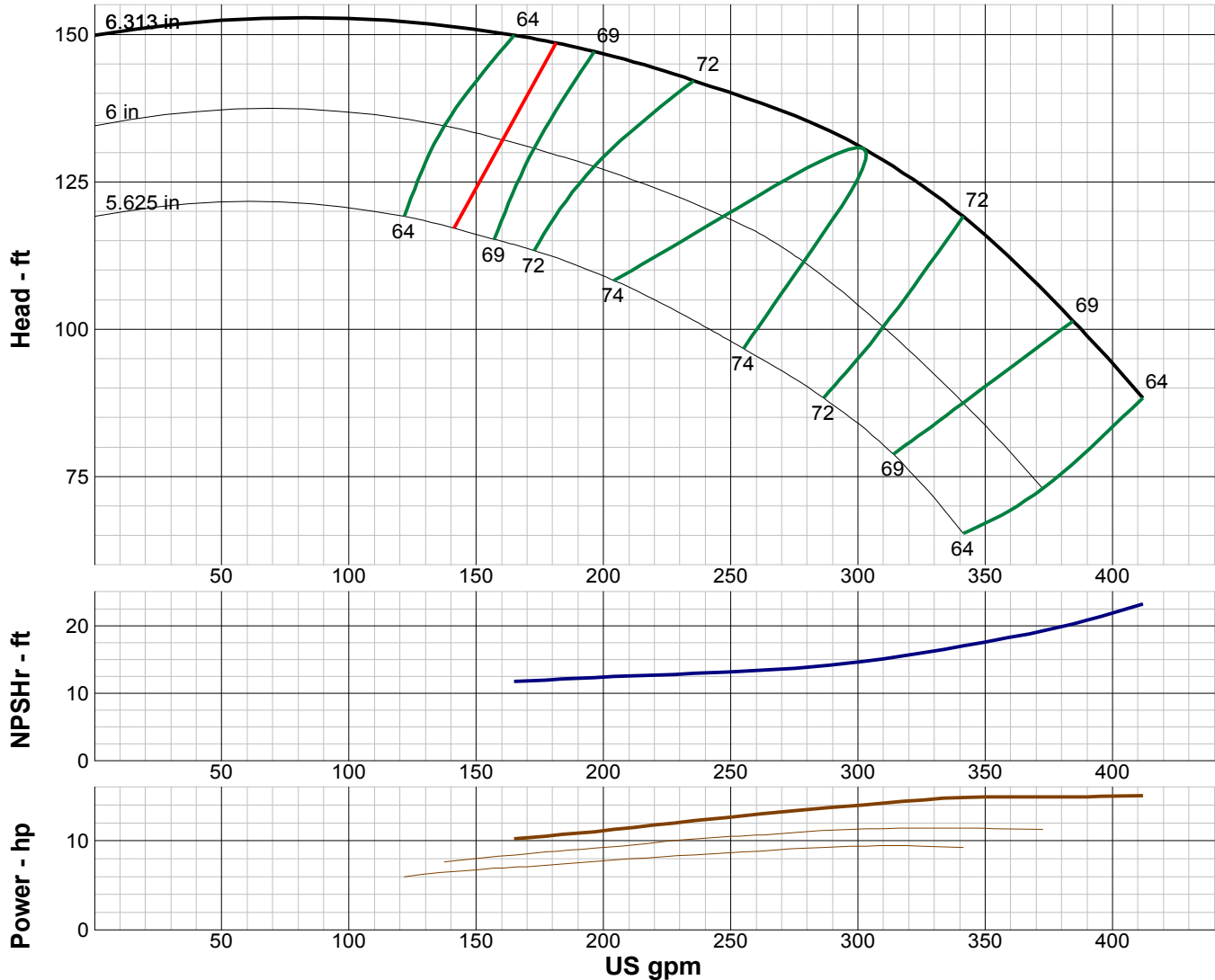
TURBINE PUMP CURVE

SINGLE STAGE PERFORMANCE

JANUARY 2010

480 SERIES

8EHS 1760 RPM



IMPELLER DATA

IMPELLER NUMBER	2981	Minimum submergence above eye of bottom impeller: 24 IN.
TYPE	SEMI-OPEN	
THRUST FACTOR	K=5.40	
EYE AREA	8.48 SQ. IN.	
WEIGHT	3.25 LB.	

EFFICIENCY CORRECTION

NUMBER OF BOWLS:	1	2	3	4
CHANGE AS FOLLOWS:	-3	-2	-1	0

CHANGE IN EFFICIENCY MAY AFFECT BOTH HEAD AND HORSEPOWER.

PUMP MATERIAL EFFICIENCY CORRECTION

	DUCTILE	BRONZE	NI-R	STAINLESS
IMPELLER MATERIAL:	-2	0	-1	-2
BOWL MATERIAL:	-2	-2	-2	-5

FLANGED BOWL DATA

BOWL NUMBER	2883
BOWL MAX. DIAMETER	7.938 IN.
BOWL MIN. DIAMETER	7.500 IN.
MAX. NO. STAGES	19
ONE STAGE WEIGHT	130 LB.
ADD STAGE WEIGHT	30 LB.
STD. SHAFT DIA.	1.188 IN.
STD. LATERAL	0.375 IN.
DISCHARGE SIZE	5 - 6 IN.
DISCHARGE CONNECTION	THD
SUCTION SIZE	5 - 6 IN.
SUCTION CONNECTION	THD
MAX. SPHERE SIZE	0.625 IN.
MAX. OPERATIONAL P.S.I.	692 (SPECIAL)

Performance based on pumping clear, fresh water at a temperature not over 85° F., free of gas, air or abrasives and with bowls properly adjusted and submerged. Performance curve reflects Hydraulic Institute tolerances and guidelines.



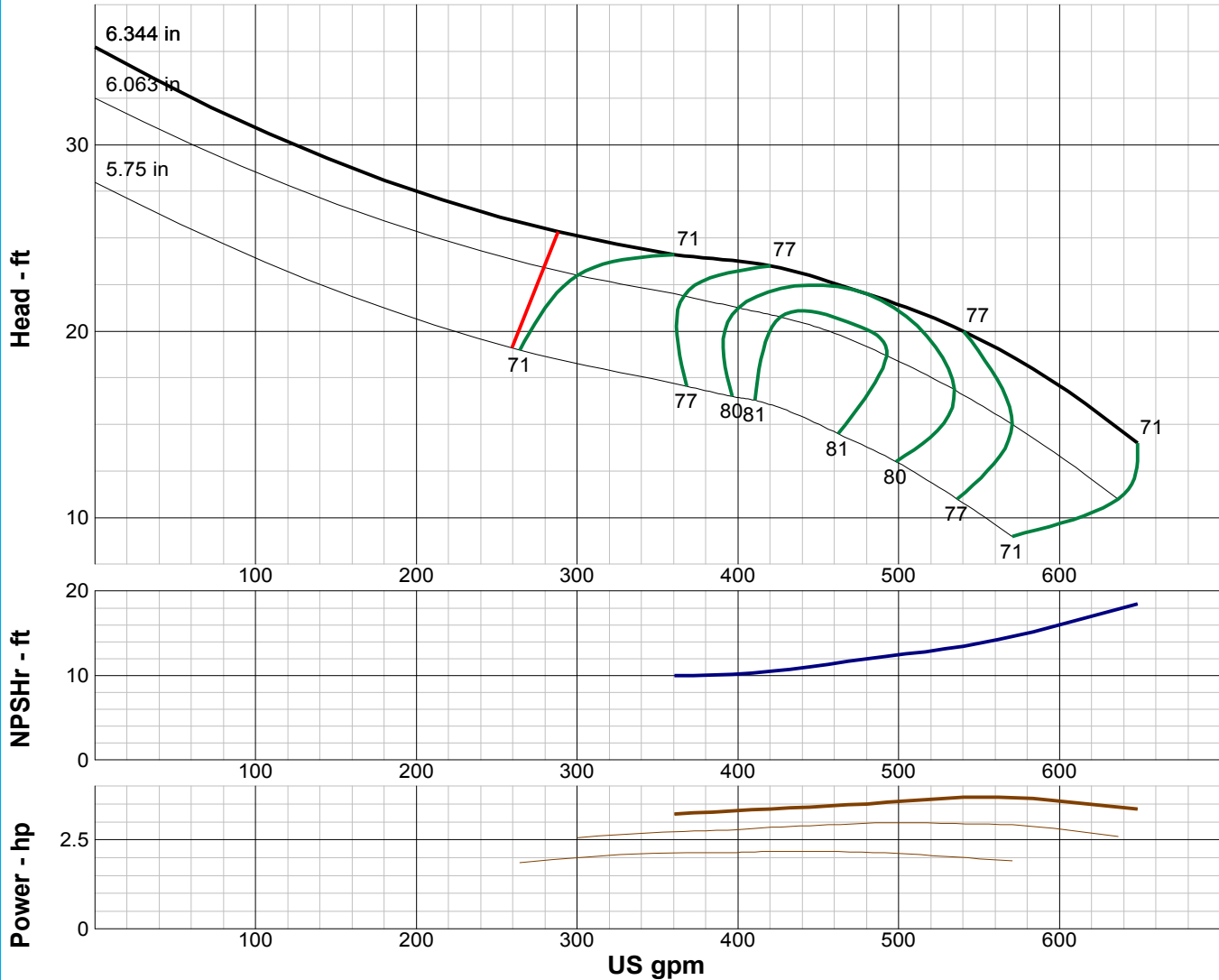
TURBINE PUMP CURVE

SINGLE STAGE PERFORMANCE

JANUARY 2010

480 SERIES

8YS 1760 RPM



IMPELLER DATA		
IMPELLER NUMBER	5506	Minimum submergence above eye of bottom impeller: 30 IN.
TYPE	SEMI-OPEN	
THRUST FACTOR	K=8.00	
EYE AREA	15.9 SQ. IN.	
WEIGHT	5.00 LB.	

EFFICIENCY CORRECTION					
NUMBER OF BOWLS:	1	2	3	4	
CHANGE AS FOLLOWS:	-3	-2	-1	0	
CHANGE IN EFFICIENCY MAY AFFECT BOTH HEAD AND HORSEPOWER.					

PUMP MATERIAL EFFICIENCY CORRECTION				
	DUCTILE	BRONZE	NI-R	STAINLESS
IMPELLER MATERIAL:	-2	0	-1	-2
BOWL MATERIAL:	-2	-2	-2	-5

FLANGED BOWL DATA	
BOWL NUMBER	5503
BOWL MAX. DIAMETER	7.938 IN.
BOWL MIN. DIAMETER	7.500 IN.
MAX. NO. STAGES	32
ONE STAGE WEIGHT	139 LB.
ADD STAGE WEIGHT	39 LB.
STD. SHAFT DIA.	1.188 IN.
STD. LATERAL	0.375 IN.
DISCHARGE SIZE	5 - 6 IN.
DISCHARGE CONNECTION	THD - FLG
SUCTION SIZE	5 - 6 IN.
SUCTION CONNECTION	THD
MAX. SPHERE SIZE	1.125 IN.
MAX. OPERATIONAL P.S.I.	692 (SPECIAL)

Performance based on pumping clear, fresh water at a temperature not over 85° F., free of gas, air or abrasives and with bowls properly adjusted and submerged. Performance curve reflects Hydraulic Institute tolerances and guidelines.



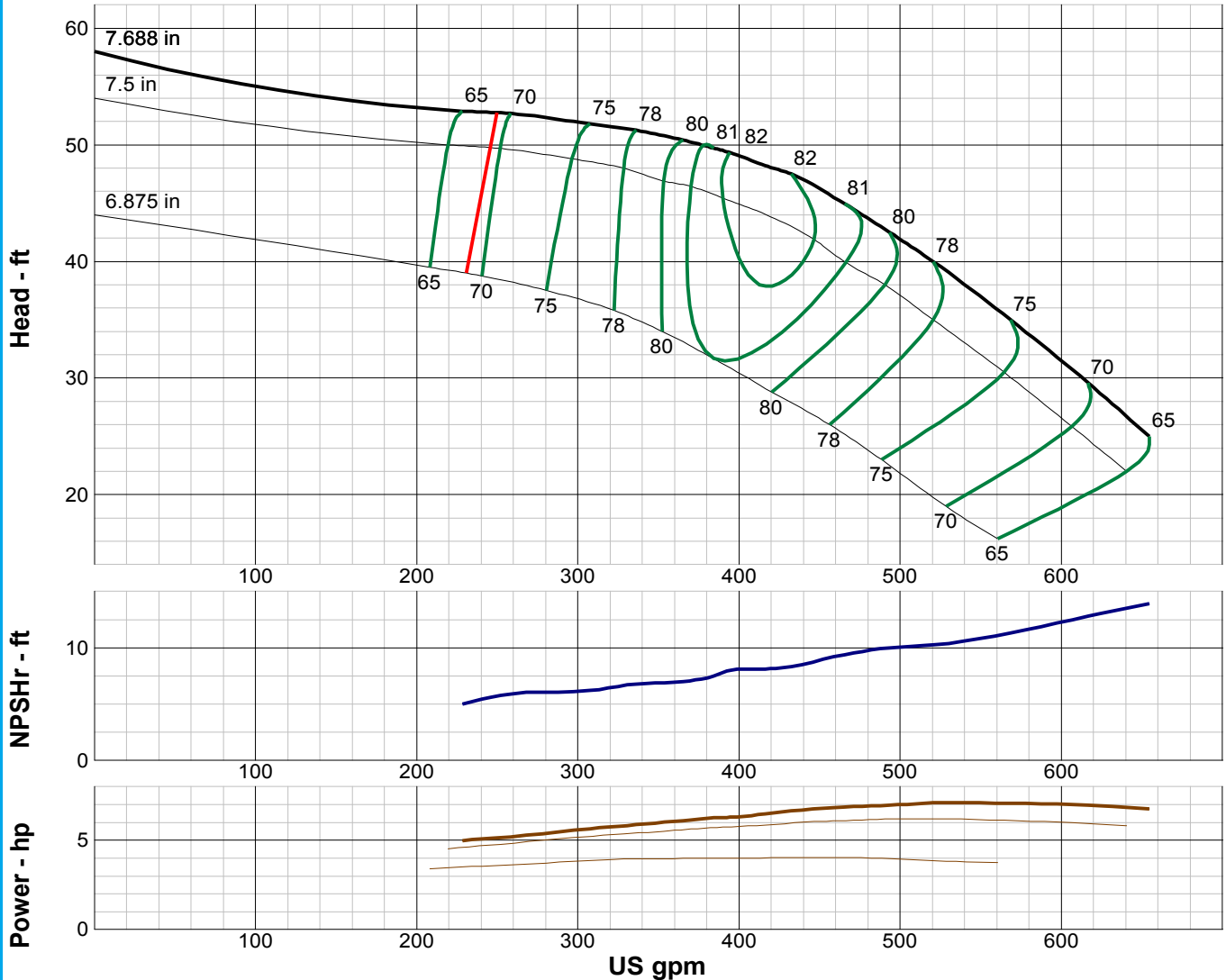
TURBINE PUMP CURVE

SINGLE STAGE PERFORMANCE

JANUARY 2010

480 SERIES

10LS 1760 RPM



IMPELLER DATA		
IMPELLER NUMBER	3103	Minimum submergence above eye of bottom impeller: 38 IN.
TYPE	SEMI-OPEN	
THRUST FACTOR	K=7.50	
EYE AREA	11.7 SQ. IN.	
WEIGHT	6.25 LB.	

EFFICIENCY CORRECTION					
NUMBER OF BOWLS:	1	2	3	4	
CHANGE AS FOLLOWS:	-4	-2	-1	0	
CHANGE IN EFFICIENCY MAY AFFECT BOTH HEAD AND HORSEPOWER.					

PUMP MATERIAL EFFICIENCY CORRECTION				
	DUCTILE	BRONZE	NI-R	STAINLESS
IMPELLER MATERIAL:	-1	0	-1	-2
BOWL MATERIAL:	-2	-2	-1	-3

FLANGED BOWL DATA	
BOWL NUMBER	3098
BOWL MAX. DIAMETER	9.500 IN.
BOWL MIN. DIAMETER	9.250 IN.
MAX. NO. STAGES	34
ONE STAGE WEIGHT	230 LB.
ADD STAGE WEIGHT	55 LB.
STD. SHAFT DIA.	1.500 IN.
STD. LATERAL	0.500 IN.
DISCHARGE SIZE	6 - 8 IN.
DISCHARGE CONNECTION	THD - FLG
SUCTION SIZE	6 - 8 IN.
SUCTION CONNECTION	THD
MAX. SPHERE SIZE	0.500 IN.
MAX. OPERATIONAL P.S.I.	595 (SPECIAL)

Performance based on pumping clear, fresh water at a temperature not over 85° F., free of gas, air or abrasives and with bowls properly adjusted and submerged. Performance curve reflects Hydraulic Institute tolerances and guidelines.



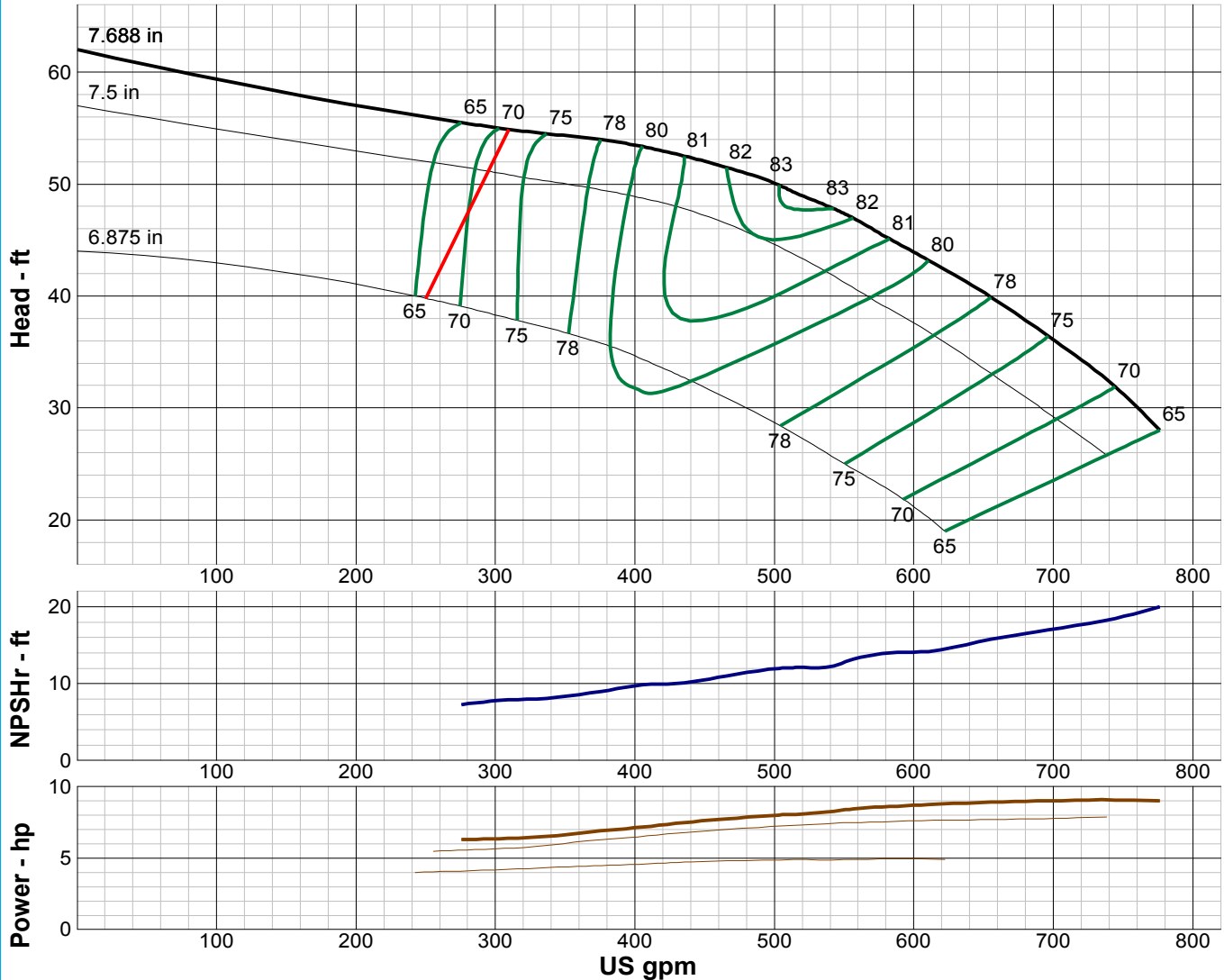
TURBINE PUMP CURVE

SINGLE STAGE PERFORMANCE

JANUARY 2010

480 SERIES

10MS 1760 RPM



IMPELLER DATA

IMPELLER NUMBER	3099	Minimum submergence above eye of bottom impeller: 38 IN.
TYPE	SEMI-OPEN	
THRUST FACTOR	K=7.50	
EYE AREA	11.7 SQ. IN.	
WEIGHT	5.75 LB.	

EFFICIENCY CORRECTION

NUMBER OF BOWLS:	1	2	3	4
CHANGE AS FOLLOWS:	-4	-2	-1	0

CHANGE IN EFFICIENCY MAY AFFECT BOTH HEAD AND HORSEPOWER.

PUMP MATERIAL EFFICIENCY CORRECTION

	DUCTILE	BRONZE	NI-R	STAINLESS
IMPELLER MATERIAL:	-1	0	-1	-2
BOWL MATERIAL:	-2	-2	-1	-3

FLANGED BOWL DATA

BOWL NUMBER	3098
BOWL MAX. DIAMETER	9.500 IN.
BOWL MIN. DIAMETER	9.250 IN.
MAX. NO. STAGES	30
ONE STAGE WEIGHT	230 LB.
ADD STAGE WEIGHT	55 LB.
STD. SHAFT DIA.	1.500 IN.
STD. LATERAL	0.625 IN.
DISCHARGE SIZE	6 - 8 IN.
DISCHARGE CONNECTION	THD - FLG
SUCTION SIZE	6 - 8 IN.
SUCTION CONNECTION	THD
MAX. SPHERE SIZE	0.625 IN.
MAX. OPERATIONAL P.S.I.	595 (SPECIAL)

Performance based on pumping clear, fresh water at a temperature not over 85° F., free of gas, air or abrasives and with bowls properly adjusted and submerged. Performance curve reflects Hydraulic Institute tolerances and guidelines.



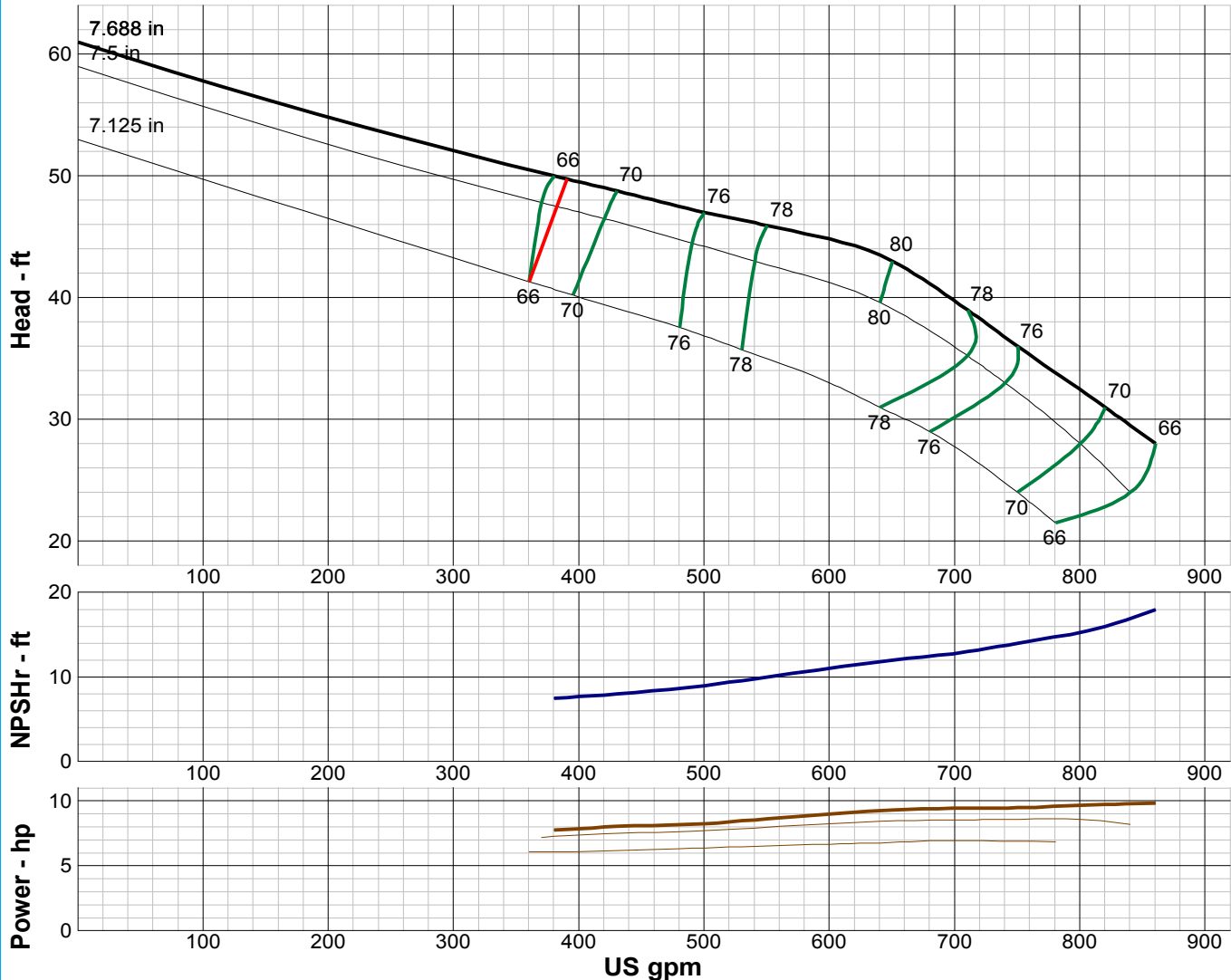
TURBINE PUMP CURVE

SINGLE STAGE PERFORMANCE

JANUARY 2010

480 SERIES

10HS 1760 RPM



IMPELLER DATA		
IMPELLER NUMBER	2969	Minimum submergence above eye of bottom impeller: 27 IN.
TYPE	SEMI-OPEN	
THRUST FACTOR	K=9.20	
EYE AREA	14.9 SQ. IN.	
WEIGHT	5.25 LB.	

EFFICIENCY CORRECTION				
NUMBER OF BOWLS:	1	2	3	4
CHANGE AS FOLLOWS:	-4	-2	-1	0
CHANGE IN EFFICIENCY MAY AFFECT BOTH HEAD AND HORSEPOWER.				

PUMP MATERIAL EFFICIENCY CORRECTION				
	DUCTILE	BRONZE	NI-R	STAINLESS
IMPELLER MATERIAL:	-1	0	-1	-2
BOWL MATERIAL:	-2	-2	-1	-3

FLANGED BOWL DATA	
BOWL NUMBER	2968
BOWL MAX. DIAMETER	9.500 IN.
BOWL MIN. DIAMETER	9.250 IN.
MAX. NO. STAGES	28
ONE STAGE WEIGHT	230 LB.
ADD STAGE WEIGHT	55 LB.
STD. SHAFT DIA.	1.500 IN.
STD. LATERAL	0.625 IN.
DISCHARGE SIZE	6 - 8 IN.
DISCHARGE CONNECTION	THD - FLG
SUCTION SIZE	6 - 8 IN.
SUCTION CONNECTION	THD
MAX. SPHERE SIZE	0.500 IN.
MAX. OPERATIONAL P.S.I.	595 (SPECIAL)

Performance based on pumping clear, fresh water at a temperature not over 85° F., free of gas, air or abrasives and with bowls properly adjusted and submerged. Performance curve reflects Hydraulic Institute tolerances and guidelines.



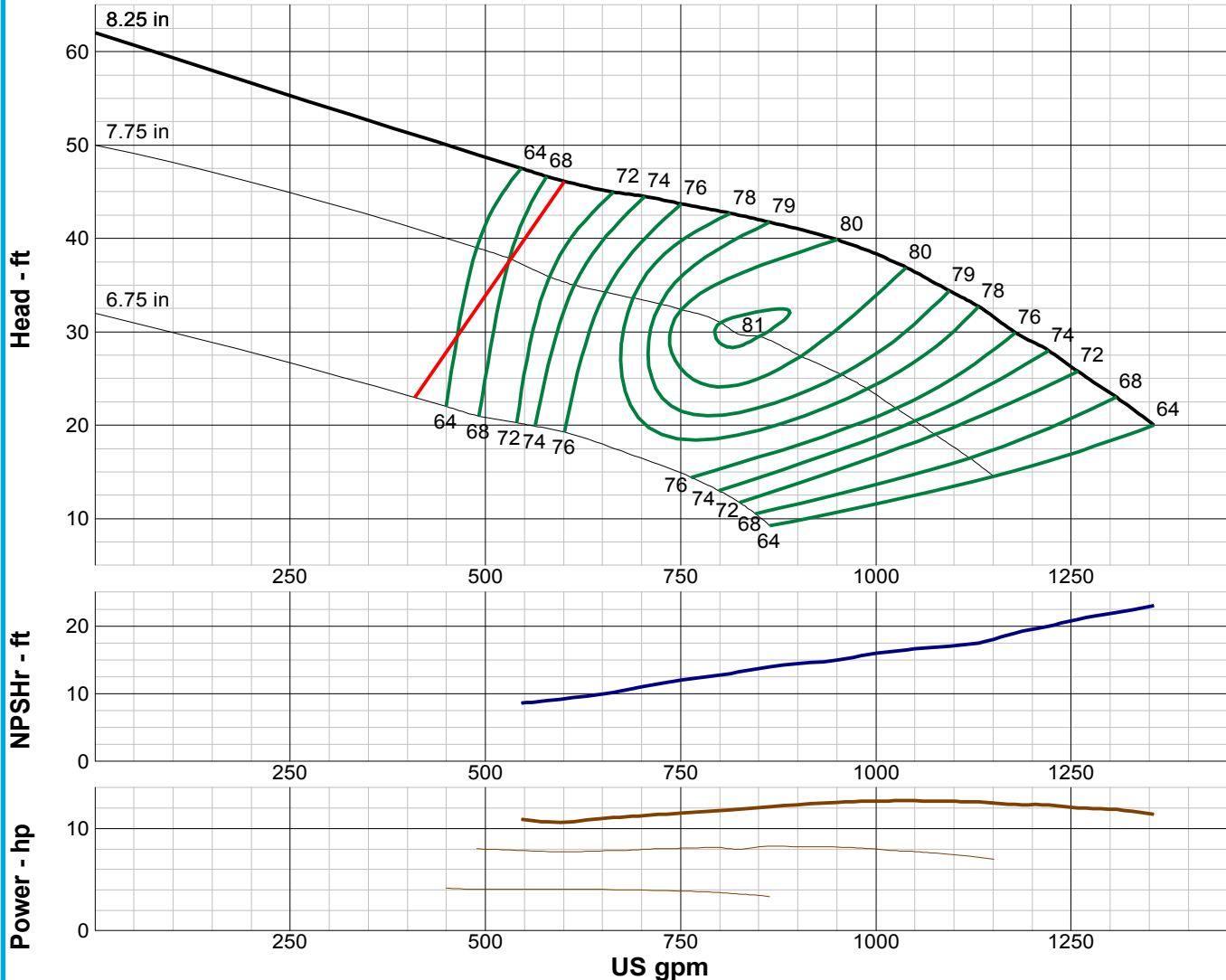
TURBINE PUMP CURVE

SINGLE STAGE PERFORMANCE

JANUARY 2010

480 SERIES

10YS 1760 RPM



IMPELLER DATA

IMPELLER NUMBER	3542	Minimum submergence above eye of bottom impeller: 28IN.
TYPE	SEMI-OPEN	
THRUST FACTOR	K=11.40	
EYE AREA	19.4 SQ. IN.	
WEIGHT	7.25 LB.	

EFFICIENCY CORRECTION

NUMBER OF BOWLS:	1	2	3	4
CHANGE AS FOLLOWS:	-4	-2	-1	0
CHANGE IN EFFICIENCY MAY AFFECT BOTH HEAD AND HORSEPOWER.				

PUMP MATERIAL EFFICIENCY CORRECTION

	DUCTILE	BRONZE	NI-R	STAINLESS
IMPELLER MATERIAL:	-1	0	-1	-2
BOWL MATERIAL:	-2	-2	-1	-3

FLANGED BOWL DATA

BOWL NUMBER	3541
BOWL MAX. DIAMETER	9.875 IN.
BOWL MIN. DIAMETER	9.500 IN.
MAX. NO. STAGES	28
ONE STAGE WEIGHT	250 LB.
ADD STAGE WEIGHT	60 LB.
STD. SHAFT DIA.	1.688 IN.
STD. LATERAL	0.750 IN.
DISCHARGE SIZE	6 - 8 IN.
DISCHARGE CONNECTION	THD - FLG
SUCTION SIZE	6 - 8 IN.
SUCTION CONNECTION	THD
MAX. SPHERE SIZE	0.875 IN.
MAX. OPERATIONAL P.S.I.	455 (SPECIAL)

Performance based on pumping clear, fresh water at a temperature not over 85° F., free of gas, air or abrasives and with bowls properly adjusted and submerged. Performance curve reflects Hydraulic Institute tolerances and guidelines.



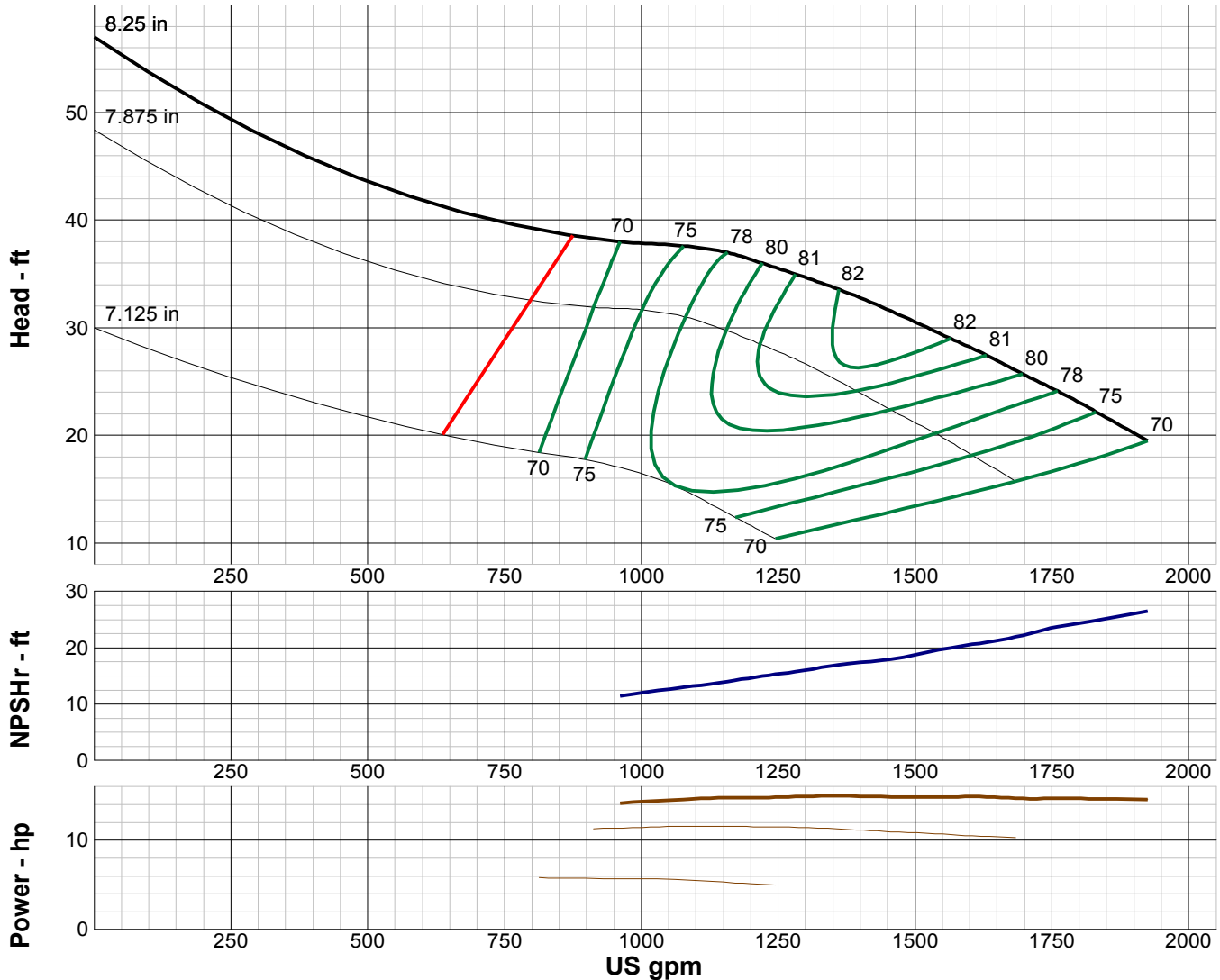
TURBINE PUMP CURVE

SINGLE STAGE PERFORMANCE

JANUARY 2010

480 SERIES

10ZS 1760 RPM



IMPELLER DATA		
IMPELLER NUMBER	3863	Minimum submergence above eye of bottom impeller: 30 IN.
TYPE	SEMI-OPEN	
THRUST FACTOR	K=13.50	
EYE AREA	26.7 SQ. IN.	
WEIGHT	5.75 LB.	

EFFICIENCY CORRECTION					
NUMBER OF BOWLS:	1	2	3	4	5
CHANGE AS FOLLOWS:	-5	-4	-2	-1	0
CHANGE IN EFFICIENCY MAY AFFECT BOTH HEAD AND HORSEPOWER.					

PUMP MATERIAL EFFICIENCY CORRECTION				
	DUCTILE	BRONZE	NI-R	STAINLESS
IMPELLER MATERIAL:	-1	0	-1	-2
BOWL MATERIAL:	-2	-2	-1	-3

FLANGED BOWL DATA	
BOWL NUMBER	3864
BOWL MAX. DIAMETER	9.875 IN.
BOWL MIN. DIAMETER	9.500 IN.
MAX. NO. STAGES	26
ONE STAGE WEIGHT	250 LB.
ADD STAGE WEIGHT	60 LB.
STD. SHAFT DIA.	1.688 IN.
STD. LATERAL	0.500 IN.
DISCHARGE SIZE	6 - 8 IN.
DISCHARGE CONNECTION	THD - FLG
SUCTION SIZE	6 - 8 IN.
SUCTION CONNECTION	THD
MAX. SPHERE SIZE	1.438 IN.
MAX. OPERATIONAL P.S.I.	455 (SPECIAL)

Performance based on pumping clear, fresh water at a temperature not over 85° F., free of gas, air or abrasives and with bowls properly adjusted and submerged. Performance curve reflects Hydraulic Institute tolerances and guidelines.



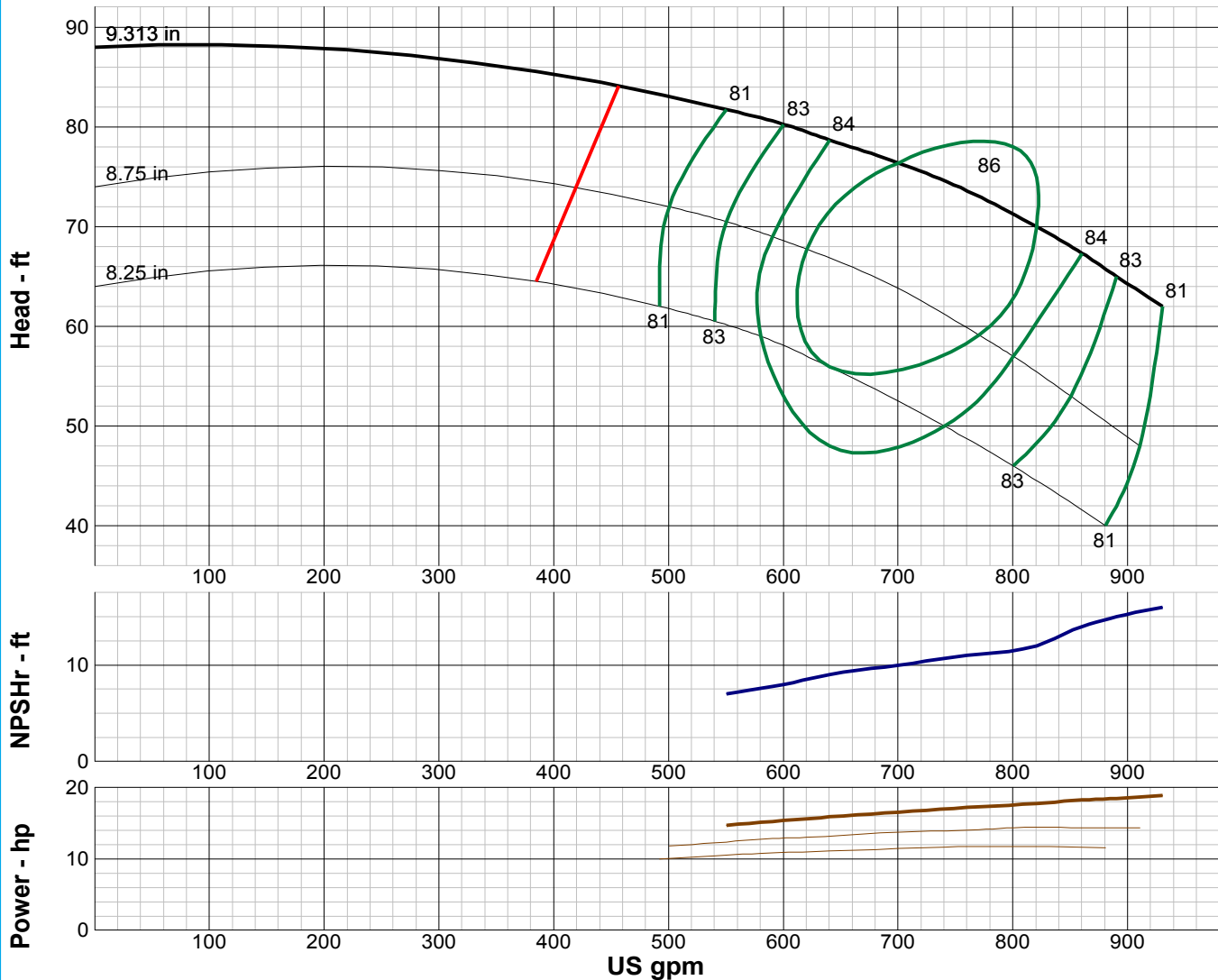
TURBINE PUMP CURVE

SINGLE STAGE PERFORMANCE

JANUARY 2010

480 SERIES

12IS 1760 RPM



IMPELLER DATA		
IMPELLER NUMBER	2997	Minimum submergence above eye of bottom impeller: 30 IN.
TYPE	SEMI-OPEN	
THRUST FACTOR	K=8.20	
EYE AREA	18.1 SQ. IN.	
WEIGHT	9.50 LB.	

EFFICIENCY CORRECTION					
NUMBER OF BOWLS:	1	2	3	4	
CHANGE AS FOLLOWS:	-4	-3	-2	-1	
CHANGE IN EFFICIENCY MAY AFFECT BOTH HEAD AND HORSEPOWER.					

PUMP MATERIAL EFFICIENCY CORRECTION				
	DUCTILE	BRONZE	NI-R	STAINLESS
IMPELLER MATERIAL:	-2	0	-1	-2
BOWL MATERIAL:	-2	-1	-2	-3

FLANGED BOWL DATA	
BOWL NUMBER	2994
BOWL MAX. DIAMETER	12.000 IN.
BOWL MIN. DIAMETER	11.500 IN.
MAX. NO. STAGES	19
ONE STAGE WEIGHT	340 LB.
ADD STAGE WEIGHT	100 LB.
STD. SHAFT DIA.	1.688 IN.
STD. LATERAL	0.625 IN.
DISCHARGE SIZE	8 - 10 IN.
DISCHARGE CONNECTION	THD - FLG
SUCTION SIZE	8 - 10 IN.
SUCTION CONNECTION	THD
MAX. SPHERE SIZE	0.625 IN.
MAX. OPERATIONAL P.S.I.	585 (SPECIAL)

Performance based on pumping clear, fresh water at a temperature not over 85° F., free of gas, air or abrasives and with bowls properly adjusted and submerged. Performance curve reflects Hydraulic Institute tolerances and guidelines.



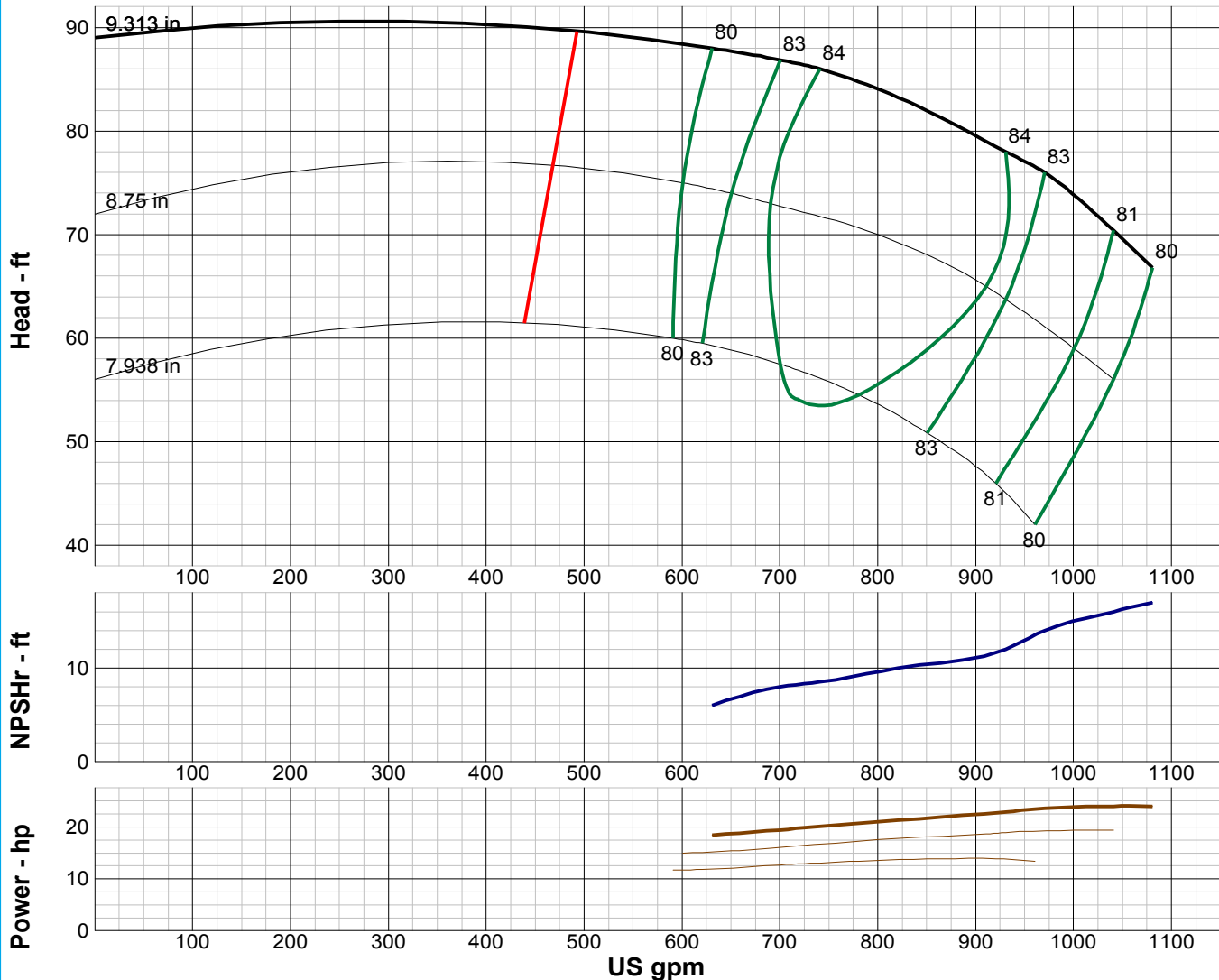
TURBINE PUMP CURVE

SINGLE STAGE PERFORMANCE

JANUARY 2010

480 SERIES

12KS 1760 RPM



IMPELLER DATA

IMPELLER NUMBER	2992	Minimum submergence above eye of bottom impeller: 30 IN.
TYPE	SEMI-OPEN	
THRUST FACTOR	K=7.75	
EYE AREA	20.4 SQ. IN.	
WEIGHT	9.00 LB.	

EFFICIENCY CORRECTION

NUMBER OF BOWLS:	1	2	3	4	5
CHANGE AS FOLLOWS:	-4	-3	-2	-1	0
CHANGE IN EFFICIENCY MAY AFFECT BOTH HEAD AND HORSEPOWER.					

PUMP MATERIAL EFFICIENCY CORRECTION

	DUCTILE	BRONZE	NI-R	STAINLESS
IMPELLER MATERIAL:	-2	0	-1	-2
BOWL MATERIAL:	-2	-1	-2	-3

FLANGED BOWL DATA

BOWL NUMBER	2994
BOWL MAX. DIAMETER	12.000 IN.
BOWL MIN. DIAMETER	11.500 IN.
MAX. NO. STAGES	16
ONE STAGE WEIGHT	340 LB.
ADD STAGE WEIGHT	100 LB.
STD. SHAFT DIA.	1.688 IN.
STD. LATERAL	0.500 IN.
DISCHARGE SIZE	8 - 10 IN.
DISCHARGE CONNECTION	THD - FLG
SUCTION SIZE	8 - 10 IN.
SUCTION CONNECTION	THD
MAX. SPHERE SIZE	0.625 IN.
MAX. OPERATIONAL P.S.I.	584 (SPECIAL)

Performance based on pumping clear, fresh water at a temperature not over 85° F., free of gas, air or abrasives and with bowls properly adjusted and submerged. Performance curve reflects Hydraulic Institute tolerances and guidelines.



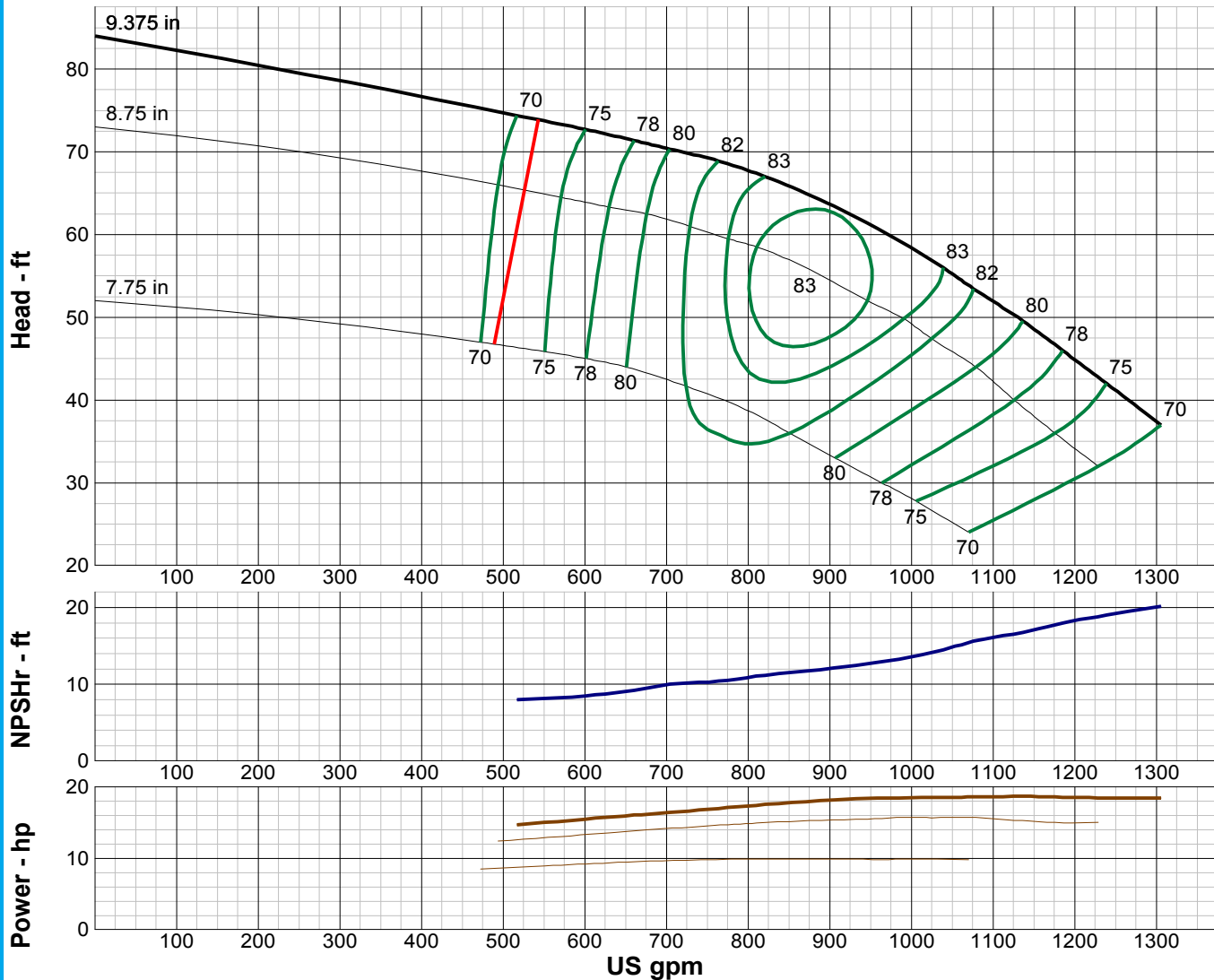
TURBINE PUMP CURVE

SINGLE STAGE PERFORMANCE

JANUARY 2010

480 SERIES

12LS 1760 RPM



IMPELLER DATA		
IMPELLER NUMBER	3779	Minimum submergence above eye of bottom impeller: 30 IN.
TYPE	SEMI-OPEN	
THRUST FACTOR	K=12.50	
EYE AREA	20.1 SQ. IN.	
WEIGHT	8.13 LB.	

EFFICIENCY CORRECTION				
NUMBER OF BOWLS:	1	2	3	4
CHANGE AS FOLLOWS:	-4	-2	-1	0
CHANGE IN EFFICIENCY MAY AFFECT BOTH HEAD AND HORSEPOWER.				

PUMP MATERIAL EFFICIENCY CORRECTION				
	DUCTILE	BRONZE	NI-R	STAINLESS
IMPELLER MATERIAL:	-2	0	-1	-2
BOWL MATERIAL:	-2	-1	-2	-3

FLANGED BOWL DATA	
BOWL NUMBER	2952
BOWL MAX. DIAMETER	11.563 IN.
BOWL MIN. DIAMETER	11.250 IN.
MAX. NO. STAGES	19
ONE STAGE WEIGHT	340 LB.
ADD STAGE WEIGHT	100 LB.
STD. SHAFT DIA.	1.688 IN.
STD. LATERAL	0.875 IN.
DISCHARGE SIZE	8 - 10 IN.
DISCHARGE CONNECTION	THD - FLG
SUCTION SIZE	8 - 10 IN.
SUCTION CONNECTION	THD
MAX. SPHERE SIZE	0.625 IN.
MAX. OPERATIONAL P.S.I.	584 (SPECIAL)

Performance based on pumping clear, fresh water at a temperature not over 85° F., free of gas, air or abrasives and with bowls properly adjusted and submerged. Performance curve reflects Hydraulic Institute tolerances and guidelines.



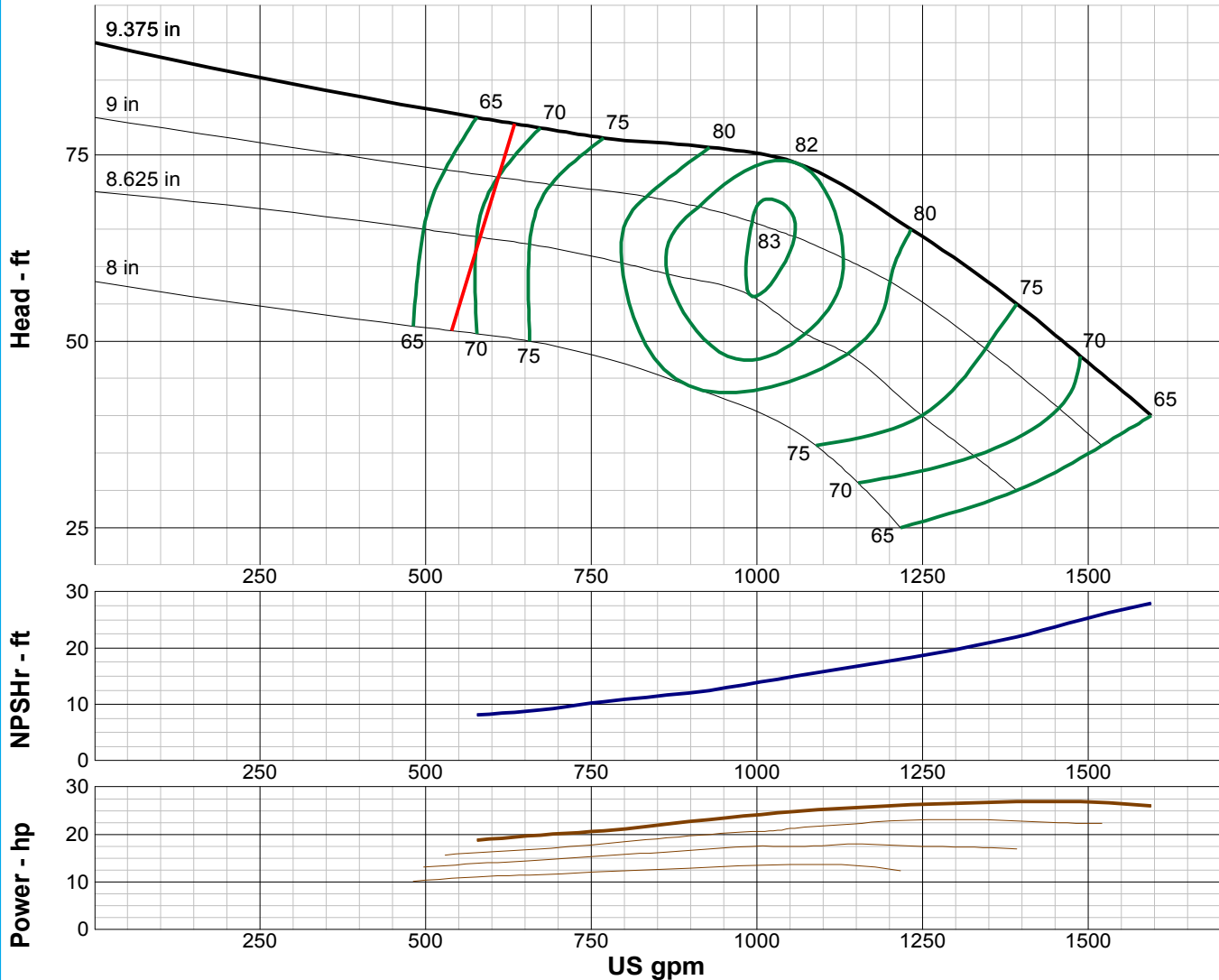
TURBINE PUMP CURVE

SINGLE STAGE PERFORMANCE

JANUARY 2010

480 SERIES

12MS 1760 RPM



IMPELLER DATA		
IMPELLER NUMBER	2956	Minimum submergence above eye of bottom impeller: 30 IN.
TYPE	SEMI-OPEN	
THRUST FACTOR	K=12.50	
EYE AREA	20.1 SQ. IN.	
WEIGHT	10.00 LB.	

EFFICIENCY CORRECTION				
NUMBER OF BOWLS:	1	2	3	4
CHANGE AS FOLLOWS:	-3	-2	-1	0
CHANGE IN EFFICIENCY MAY AFFECT BOTH HEAD AND HORSEPOWER.				

PUMP MATERIAL EFFICIENCY CORRECTION				
	DUCTILE	BRONZE	NI-R	STAINLESS
IMPELLER MATERIAL:	-2	0	-1	-2
BOWL MATERIAL:	-2	-1	-2	-3

FLANGED BOWL DATA	
BOWL NUMBER	2952
BOWL MAX. DIAMETER	11.563 IN.
BOWL MIN. DIAMETER	11.250 IN.
MAX. NO. STAGES	14
ONE STAGE WEIGHT	340 LB.
ADD STAGE WEIGHT	100 LB.
STD. SHAFT DIA.	1.688 IN.
STD. LATERAL	0.750 IN.
DISCHARGE SIZE	8 - 10 IN.
DISCHARGE CONNECTION	THD - FLG
SUCTION SIZE	8 - 10 IN.
SUCTION CONNECTION	THD
MAX. SPHERE SIZE	0.625 IN.
MAX. OPERATIONAL P.S.I.	584 (SPECIAL)

Performance based on pumping clear, fresh water at a temperature not over 85° F., free of gas, air or abrasives and with bowls properly adjusted and submerged. Performance curve reflects Hydraulic Institute tolerances and guidelines.



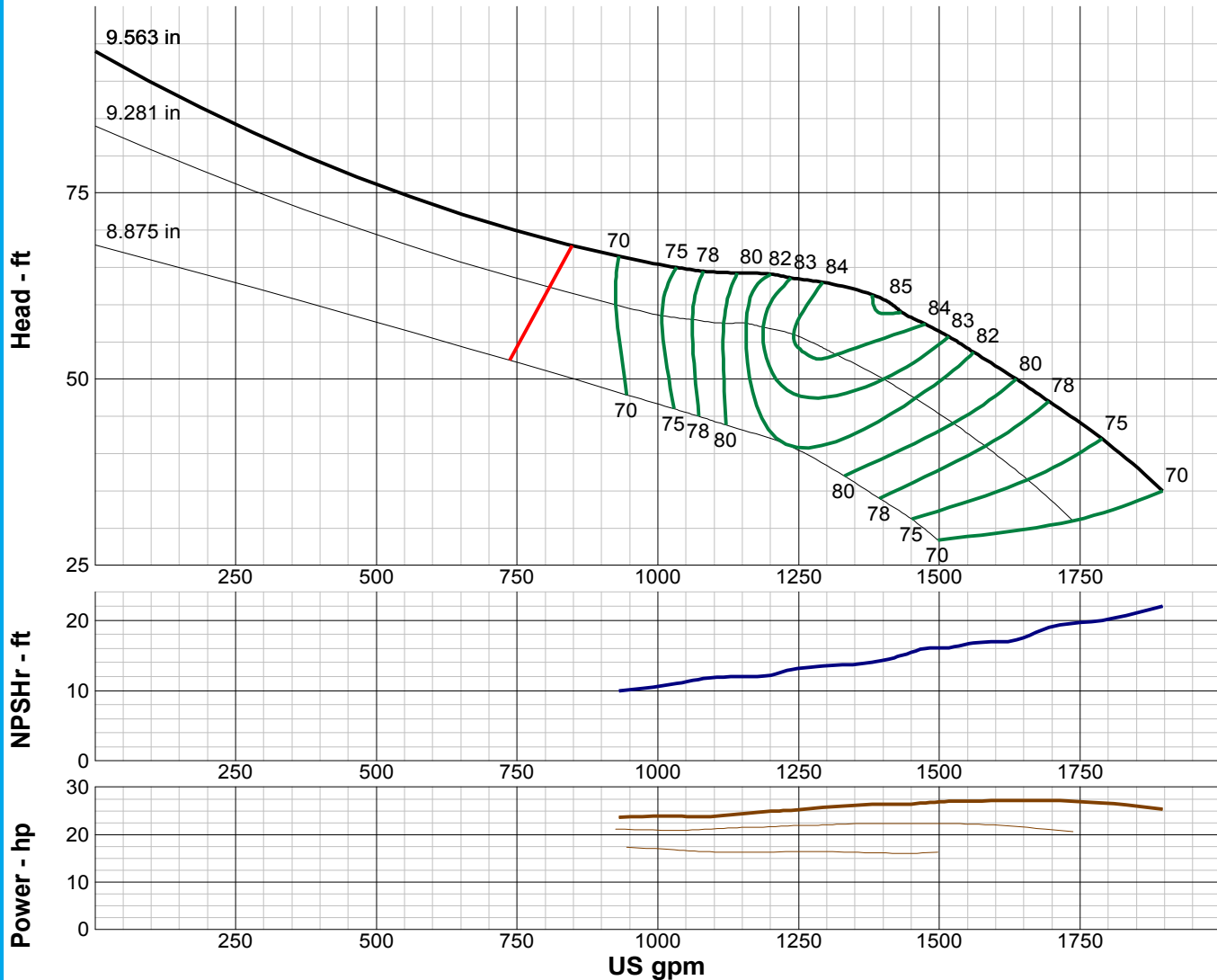
TURBINE PUMP CURVE

SINGLE STAGE PERFORMANCE

JANUARY 2010

480 SERIES

12HS 1760 RPM



IMPELLER DATA

IMPELLER NUMBER	2953	Minimum submergence above eye of bottom impeller: 30 IN.
TYPE	SEMI-OPEN	
THRUST FACTOR	K=19.00	
EYE AREA	32.4 SQ. IN.	
WEIGHT	11.25 LB.	

EFFICIENCY CORRECTION

NUMBER OF BOWLS:	1	2	3	4
CHANGE AS FOLLOWS:	-4	-2	-1	0
CHANGE IN EFFICIENCY MAY AFFECT BOTH HEAD AND HORSEPOWER.				

PUMP MATERIAL EFFICIENCY CORRECTION

	DUCTILE	BRONZE	NI-R	STAINLESS
IMPELLER MATERIAL:	-2	0	-1	-2
BOWL MATERIAL:	-2	-1	-2	-3

FLANGED BOWL DATA

BOWL NUMBER	2915
BOWL MAX. DIAMETER	11.563 IN.
BOWL MIN. DIAMETER	11.250 IN.
MAX. NO. STAGES	15
ONE STAGE WEIGHT	340 LB.
ADD STAGE WEIGHT	100 LB.
STD. SHAFT DIA.	1.688 IN.
STD. LATERAL	0.750 IN.
DISCHARGE SIZE	8 - 10 IN.
DISCHARGE CONNECTION	THD - FLG
SUCTION SIZE	8 - 10 IN.
SUCTION CONNECTION	THD
MAX. SPHERE SIZE	0.750 IN.
MAX. OPERATIONAL P.S.I.	584 (SPECIAL)

Performance based on pumping clear, fresh water at a temperature not over 85° F., free of gas, air or abrasives and with bowls properly adjusted and submerged. Performance curve reflects Hydraulic Institute tolerances and guidelines.



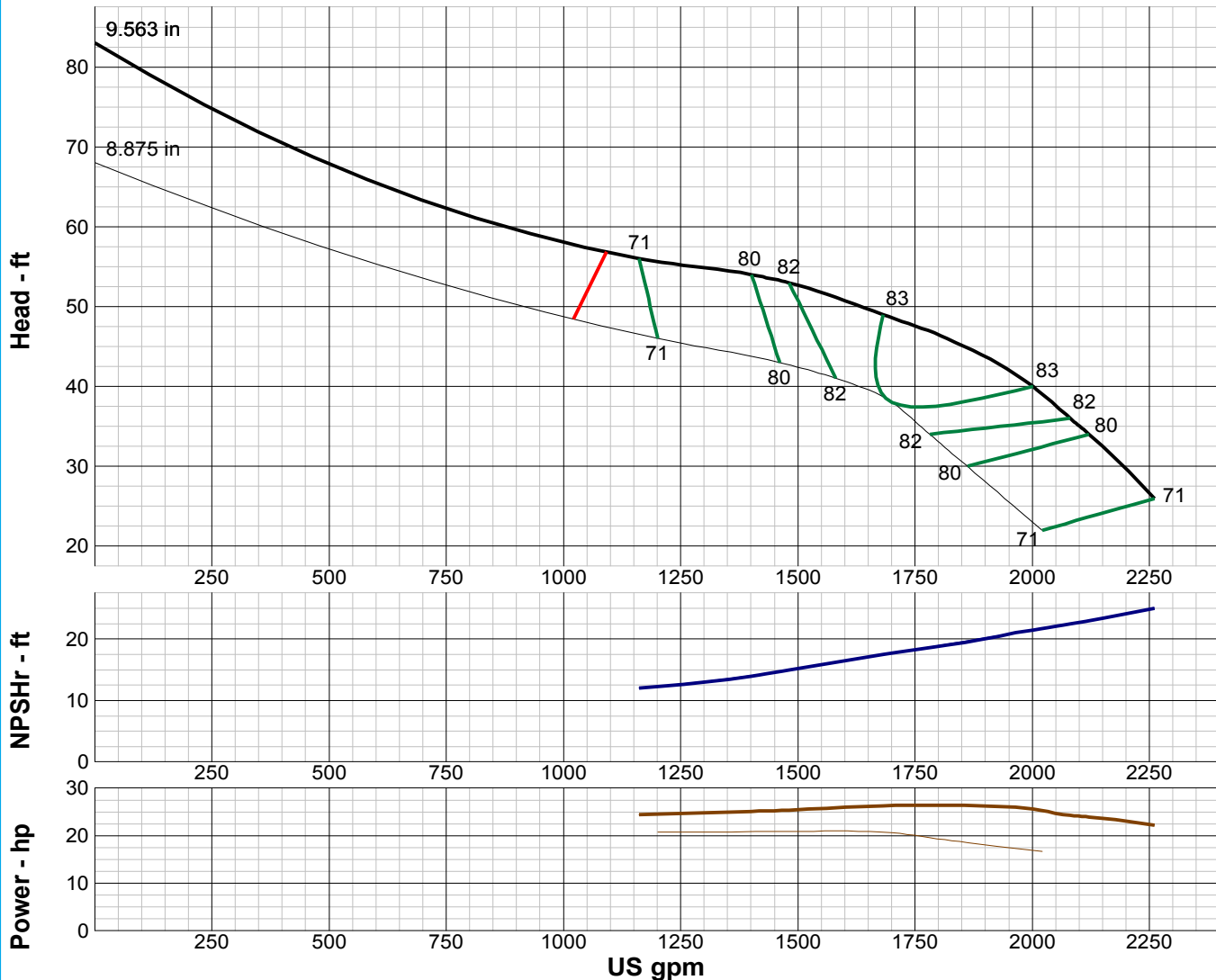
TURBINE PUMP CURVE

SINGLE STAGE PERFORMANCE

JANUARY 2010

480 SERIES

12XS 1760 RPM



IMPELLER DATA

IMPELLER NUMBER	3374	Minimum submergence above eye of bottom impeller: 30 IN.
TYPE	SEMI-OPEN	
THRUST FACTOR	K=20.80	
EYE AREA	35.6 SQ. IN.	
WEIGHT	11.50 LB.	

EFFICIENCY CORRECTION

NUMBER OF BOWLS:	1	2	3	4
CHANGE AS FOLLOWS:	-4	-2	-1	0
CHANGE IN EFFICIENCY MAY AFFECT BOTH HEAD AND HORSEPOWER.				

PUMP MATERIAL EFFICIENCY CORRECTION

	DUCTILE	BRONZE	NI-R	STAINLESS
IMPELLER MATERIAL:	-2	0	-1	-2
BOWL MATERIAL:	-2	-1	-2	-3

FLANGED BOWL DATA

BOWL NUMBER	3361
BOWL MAX. DIAMETER	11.563 IN.
BOWL MIN. DIAMETER	11.250 IN.
MAX. NO. STAGES	11
ONE STAGE WEIGHT	340 LB.
ADD STAGE WEIGHT	100 LB.
STD. SHAFT DIA.	1.688 IN.
STD. LATERAL	0.875 IN.
DISCHARGE SIZE	8 - 10 IN.
DISCHARGE CONNECTION	THD - FLG
SUCTION SIZE	8 - 10 IN.
SUCTION CONNECTION	THD
MAX. SPHERE SIZE	1.000 IN.
MAX. OPERATIONAL P.S.I.	584 (SPECIAL)

Performance based on pumping clear, fresh water at a temperature not over 85° F., free of gas, air or abrasives and with bowls properly adjusted and submerged. Performance curve reflects Hydraulic Institute tolerances and guidelines.



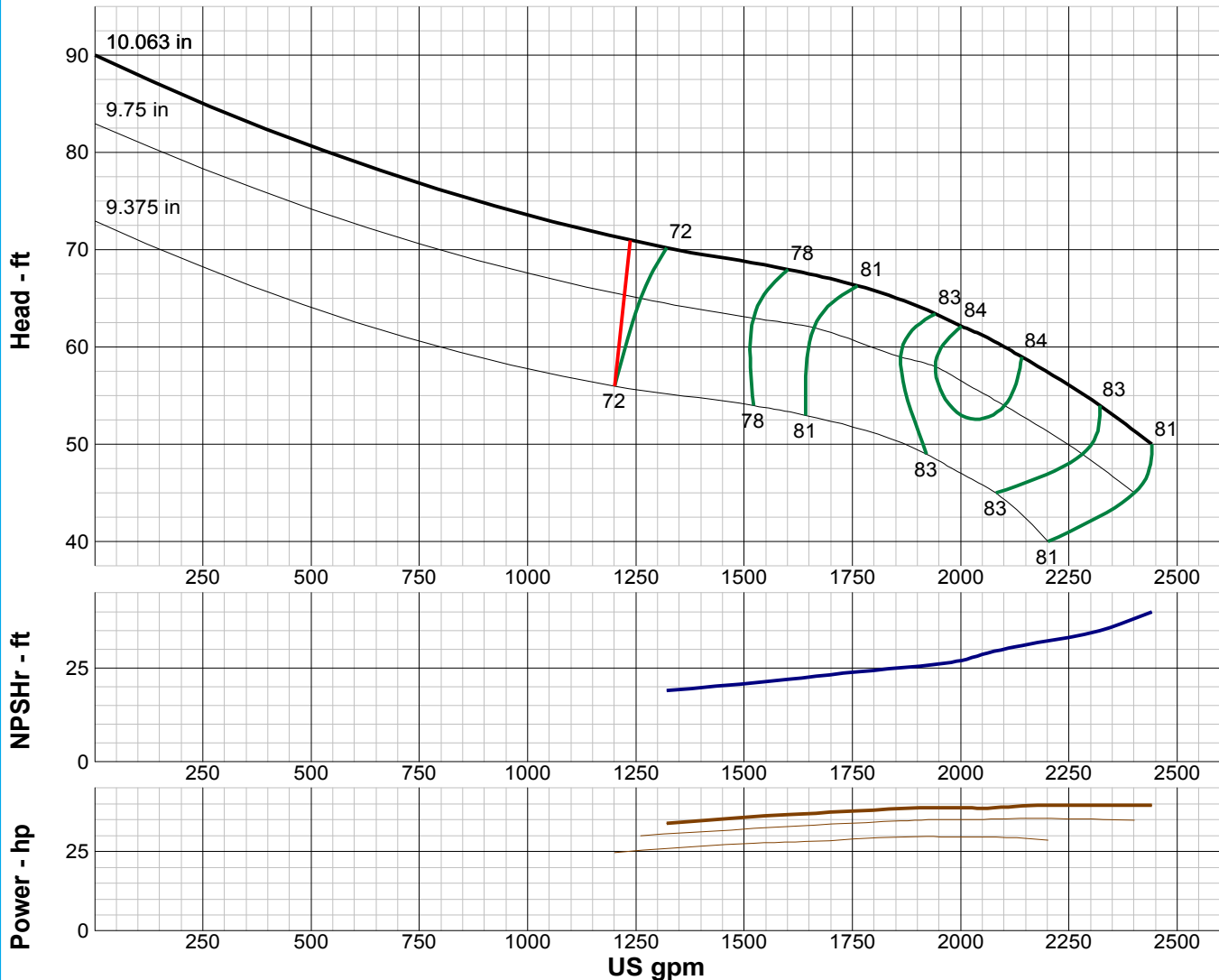
TURBINE PUMP CURVE

SINGLE STAGE PERFORMANCE

JANUARY 2010

480 SERIES

12WS 1760 RPM



IMPELLER DATA		
IMPELLER NUMBER	4777	Minimum submergence above eye of bottom impeller: 32 IN.
TYPE	SEMI-OPEN	
THRUST FACTOR	K=17.40	
EYE AREA	29.7 SQ. IN.	
WEIGHT	14.50 LB.	

EFFICIENCY CORRECTION					
NUMBER OF BOWLS:	1	2	3	4	
CHANGE AS FOLLOWS:	-3	-2	-1	0	
CHANGE IN EFFICIENCY MAY AFFECT BOTH HEAD AND HORSEPOWER.					

PUMP MATERIAL EFFICIENCY CORRECTION				
	DUCTILE	BRONZE	NI-R	STAINLESS
IMPELLER MATERIAL:	-2	0	-1	-2
BOWL MATERIAL:	-2	-1	-2	-3

FLANGED BOWL DATA	
BOWL NUMBER	4771
BOWL MAX. DIAMETER	12.188 IN.
BOWL MIN. DIAMETER	11.750 IN.
MAX. NO. STAGES	9
ONE STAGE WEIGHT	415 LB.
ADD STAGE WEIGHT	140 LB.
STD. SHAFT DIA.	1.688 IN.
STD. LATERAL	0.750 IN.
DISCHARGE SIZE	8 - 10 IN.
DISCHARGE CONNECTION	THD - FLG
SUCTION SIZE	8 - 10 IN.
SUCTION CONNECTION	THD
MAX. SPHERE SIZE	1.375 IN.
MAX. OPERATIONAL P.S.I.	584 (SPECIAL)

Performance based on pumping clear, fresh water at a temperature not over 85° F., free of gas, air or abrasives and with bowls properly adjusted and submerged. Performance curve reflects Hydraulic Institute tolerances and guidelines.



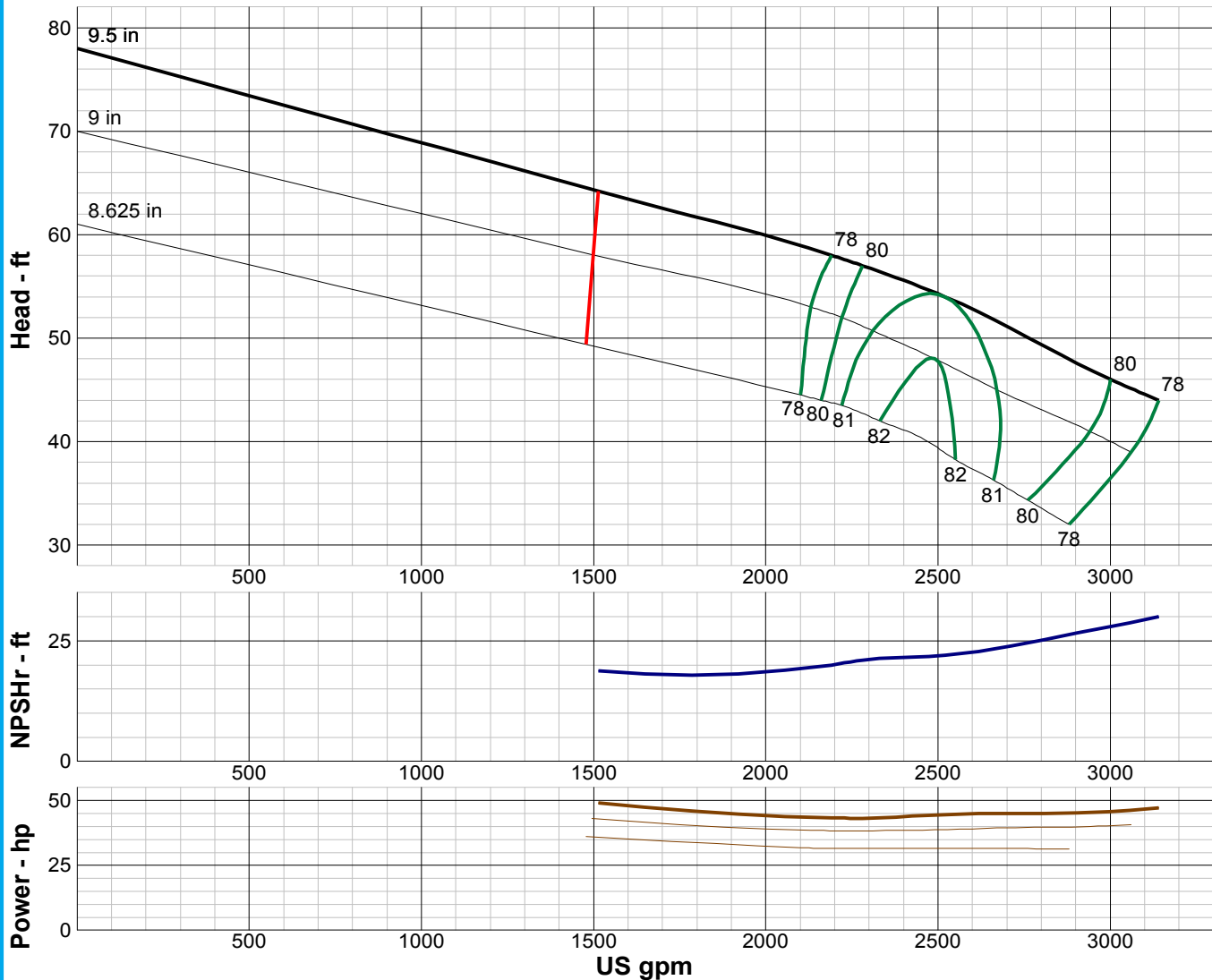
TURBINE PUMP CURVE

SINGLE STAGE PERFORMANCE

JANUARY 2010

480 SERIES

12YS 1760 RPM



IMPELLER DATA		
IMPELLER NUMBER	4778	Minimum submergence above eye of bottom impeller: 36 IN.
TYPE	SEMI-OPEN	
THRUST FACTOR	K=16.50	
EYE AREA	38.0 SQ. IN.	
WEIGHT	19.00 LB.	

EFFICIENCY CORRECTION					
NUMBER OF BOWLS:	1	2	3	4	
CHANGE AS FOLLOWS:	-4	-2	-1	0	
CHANGE IN EFFICIENCY MAY AFFECT BOTH HEAD AND HORSEPOWER.					

PUMP MATERIAL EFFICIENCY CORRECTION				
	DUCTILE	BRONZE	NI-R	STAINLESS
IMPELLER MATERIAL:	-2	0	-1	-2
BOWL MATERIAL:	-2	-1	-2	-3

FLANGED BOWL DATA	
BOWL NUMBER	4772
BOWL MAX. DIAMETER	12.188 IN.
BOWL MIN. DIAMETER	11.750 IN.
MAX. NO. STAGES	8
ONE STAGE WEIGHT	415 LB.
ADD STAGE WEIGHT	140 LB.
STD. SHAFT DIA.	1.688 IN.
STD. LATERAL	0.875 IN.
DISCHARGE SIZE	8 - 10 IN.
DISCHARGE CONNECTION	THD - FLG
SUCTION SIZE	8 - 10 IN.
SUCTION CONNECTION	THD
MAX. SPHERE SIZE	1.500 IN.
MAX. OPERATIONAL P.S.I.	584 (SPECIAL)

Performance based on pumping clear, fresh water at a temperature not over 85° F., free of gas, air or abrasives and with bowls properly adjusted and submerged. Performance curve reflects Hydraulic Institute tolerances and guidelines.



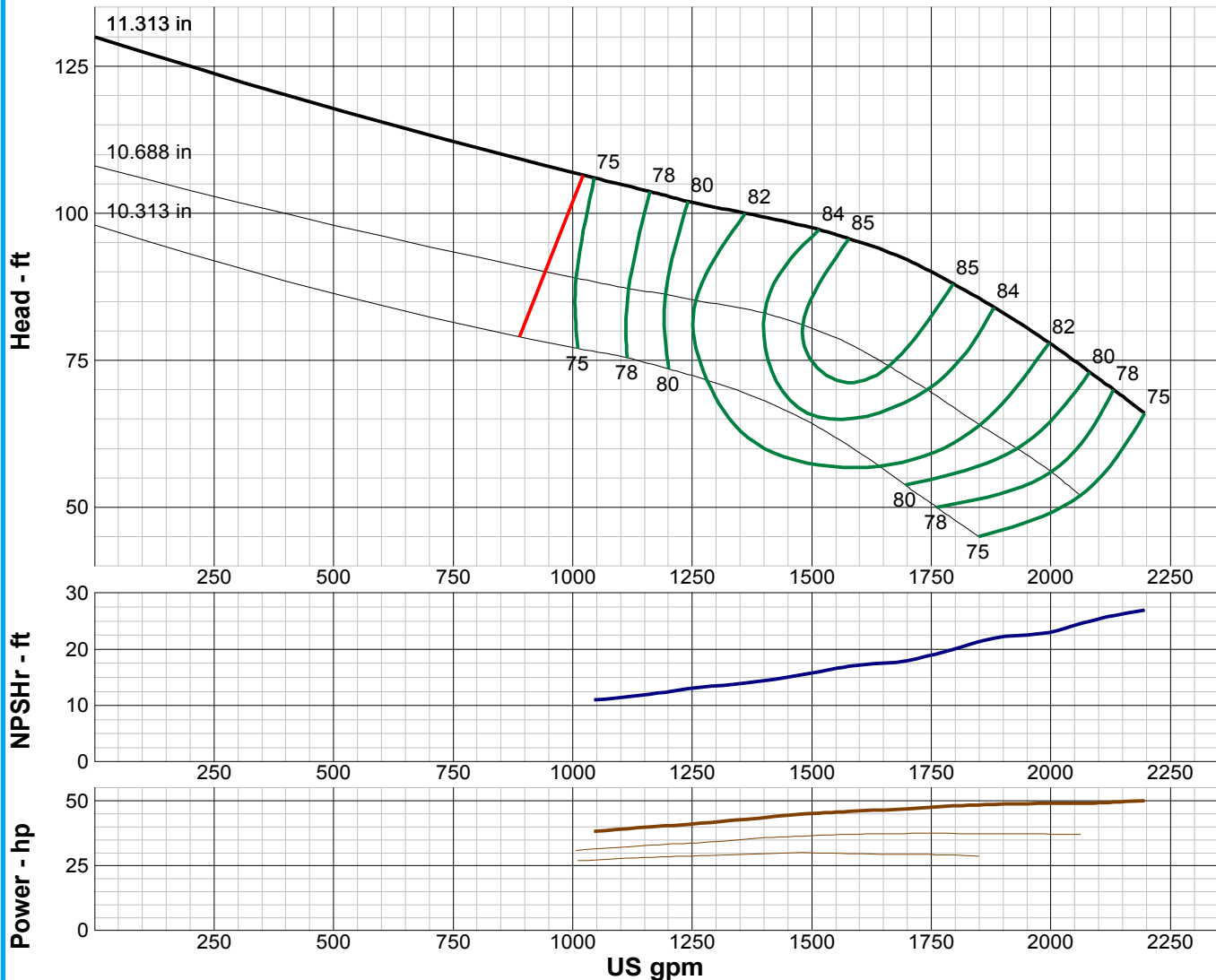
TURBINE PUMP CURVE

SINGLE STAGE PERFORMANCE

JANUARY 2010

480 SERIES

14LS 1750 RPM



IMPELLER DATA		
IMPELLER NUMBER	3107	Minimum submergence above eye of bottom impeller: 30 IN.
TYPE	ENCLOSED	
THRUST FACTOR	K=19.70	
EYE AREA	31.5 SQ. IN.	
WEIGHT	18.50 LB.	

EFFICIENCY CORRECTION				
NUMBER OF BOWLS:	1	2	3	
CHANGE AS FOLLOWS:	-2	-1	0	
CHANGE IN EFFICIENCY MAY AFFECT BOTH HEAD AND HORSEPOWER.				

PUMP MATERIAL EFFICIENCY CORRECTION				
	DUCTILE	BRONZE	NI-R	STAINLESS
IMPELLER MATERIAL:	-2	0	-1	-1
BOWL MATERIAL:	-2	-1	-2	-2

FLANGED BOWL DATA	
BOWL NUMBER	3106
BOWL MAX. DIAMETER	13.500 IN.
BOWL MIN. DIAMETER	13.250 IN.
MAX. NO. STAGES	12
ONE STAGE WEIGHT	490 LB.
ADD STAGE WEIGHT	175 LB.
STD. SHAFT DIA.	1.938 IN.
STD. LATERAL	0.875 IN.
DISCHARGE SIZE	10 - 12 IN.
DISCHARGE CONNECTION	THD - FLG
SUCTION SIZE	10 - 12 IN.
SUCTION CONNECTION	THD
MAX. SPHERE SIZE	0.750 IN.
MAX. OPERATIONAL P.S.I.	540 (SPECIAL)

Performance based on pumping clear, fresh water at a temperature not over 85° F., free of gas, air or abrasives and with bowls properly adjusted and submerged. Performance curve reflects Hydraulic Institute tolerances and guidelines.



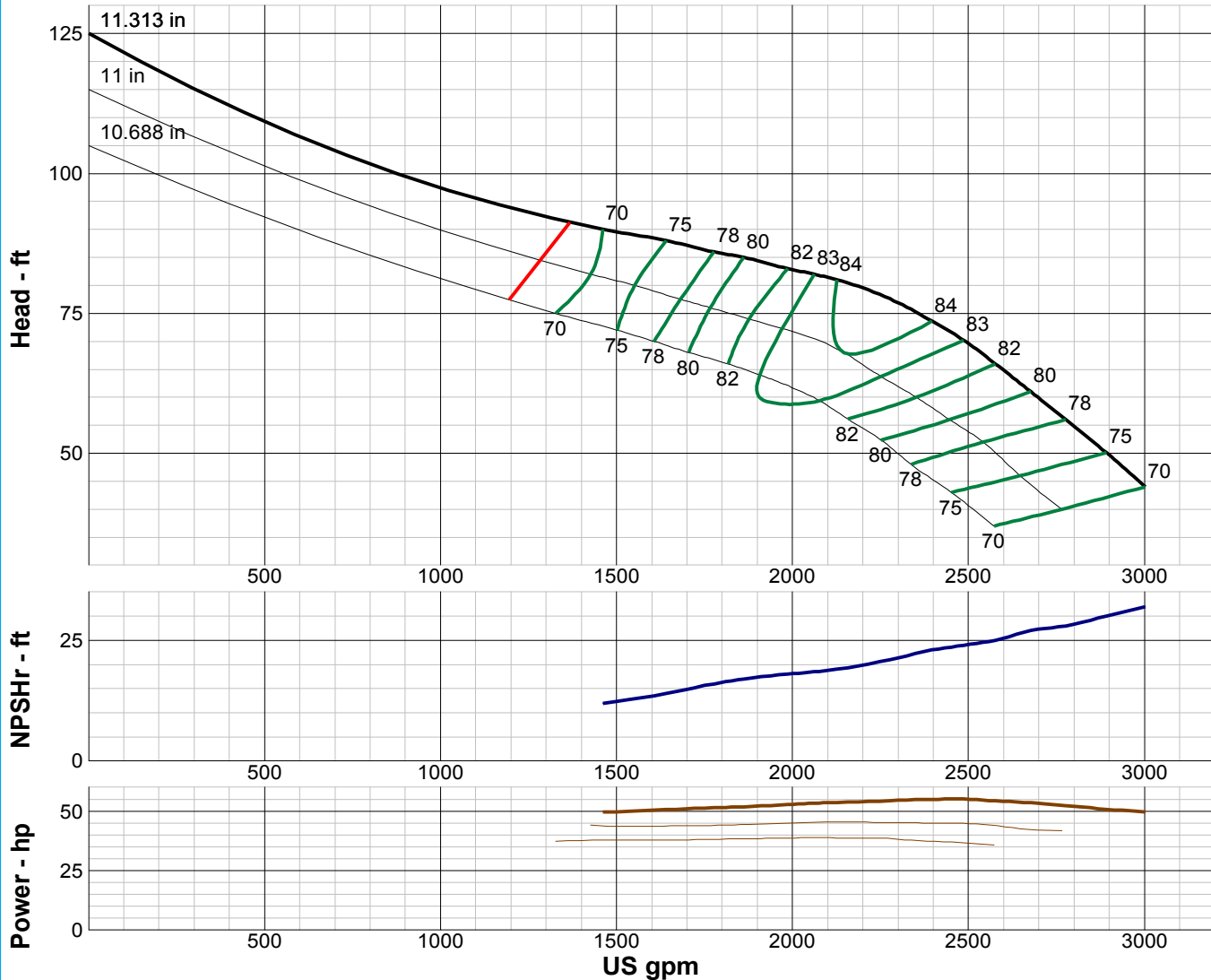
TURBINE PUMP CURVE

SINGLE STAGE PERFORMANCE

JANUARY 2010

480 SERIES

14MS 1750 RPM



IMPELLER DATA		
IMPELLER NUMBER	3078	Minimum submergence above eye of bottom impeller: 30 IN.
TYPE	SEMI-OPEN	
THRUST FACTOR	K=23.40	
EYE AREA	40.9 SQ. IN.	
WEIGHT	20.25 LB.	

EFFICIENCY CORRECTION					
NUMBER OF BOWLS:	1	2	3	4	
CHANGE AS FOLLOWS:	-3	-2	-1	0	
CHANGE IN EFFICIENCY MAY AFFECT BOTH HEAD AND HORSEPOWER.					

PUMP MATERIAL EFFICIENCY CORRECTION				
	DUCTILE	BRONZE	NI-R	STAINLESS
IMPELLER MATERIAL:	-2	0	-1	-1
BOWL MATERIAL:	-2	-1	-2	-2

FLANGED BOWL DATA	
BOWL NUMBER	3042
BOWL MAX. DIAMETER	13.500 IN.
BOWL MIN. DIAMETER	13.250 IN.
MAX. NO. STAGES	10
ONE STAGE WEIGHT	490 LB.
ADD STAGE WEIGHT	175 LB.
STD. SHAFT DIA.	1.938 IN.
STD. LATERAL	0.875 IN.
DISCHARGE SIZE	10 - 12 IN.
DISCHARGE CONNECTION	THD - FLG
SUCTION SIZE	10 - 12 IN.
SUCTION CONNECTION	THD
MAX. SPHERE SIZE	1.250 IN.
MAX. OPERATIONAL P.S.I.	540 (SPECIAL)

Performance based on pumping clear, fresh water at a temperature not over 85° F., free of gas, air or abrasives and with bowls properly adjusted and submerged. Performance curve reflects Hydraulic Institute tolerances and guidelines.



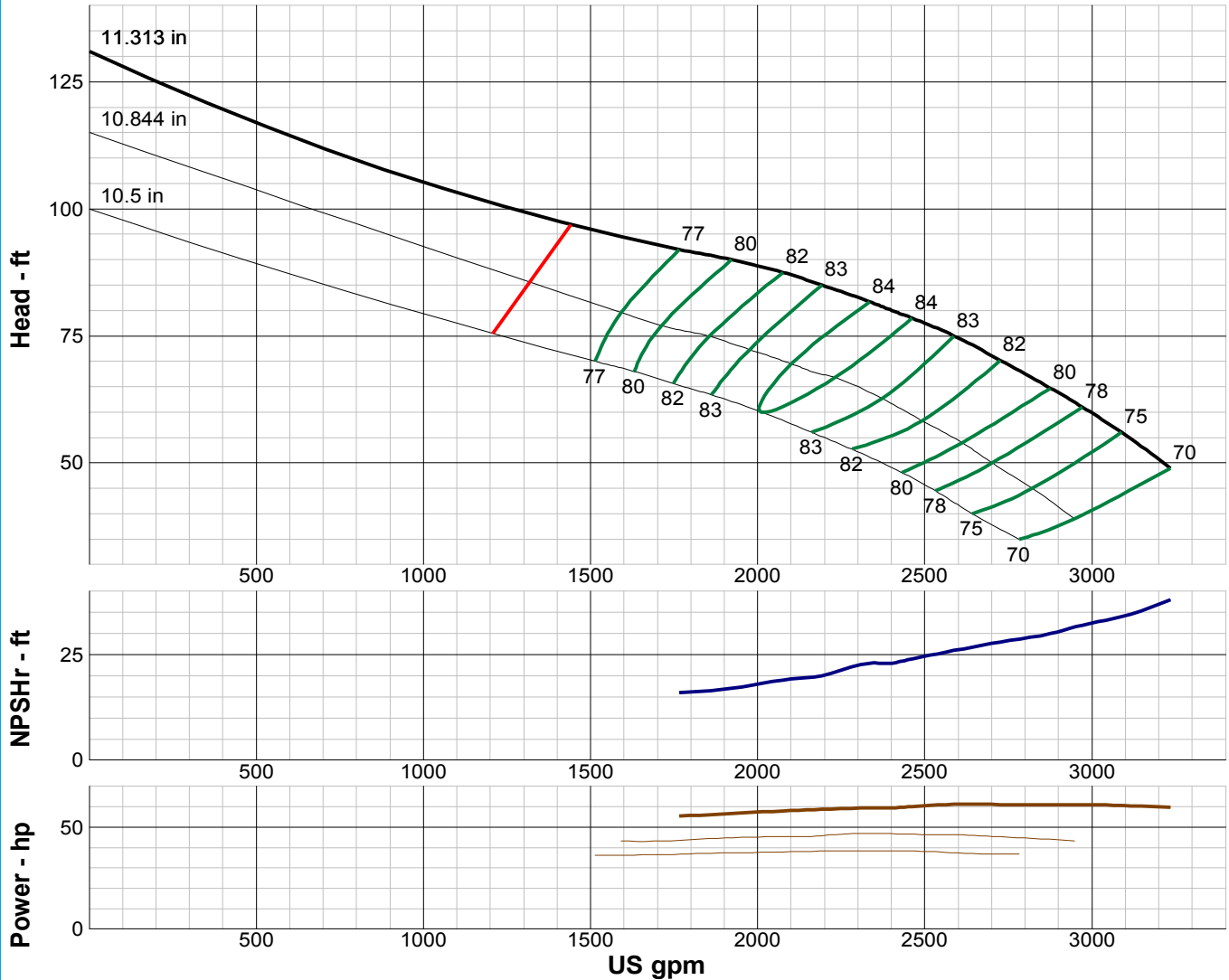
TURBINE PUMP CURVE

SINGLE STAGE PERFORMANCE

JANUARY 2010

480 SERIES

14HS 1760 RPM



IMPELLER DATA		
IMPELLER NUMBER	3029	Minimum submergence above eye of bottom impeller: 32 IN.
TYPE	SEMI-OPEN	
THRUST FACTOR	K=25.20	
EYE AREA	43.9 SQ. IN.	
WEIGHT	21.25 LB.	

EFFICIENCY CORRECTION					
NUMBER OF BOWLS:	1	2	3	4	
CHANGE AS FOLLOWS:	-3	-2	-1	0	
CHANGE IN EFFICIENCY MAY AFFECT BOTH HEAD AND HORSEPOWER.					

PUMP MATERIAL EFFICIENCY CORRECTION				
	DUCTILE	BRONZE	NI-R	STAINLESS
IMPELLER MATERIAL:	-2	0	-1	-1
BOWL MATERIAL:	-2	-1	-2	-2

FLANGED BOWL DATA	
BOWL NUMBER	3042
BOWL MAX. DIAMETER	13.500 IN.
BOWL MIN. DIAMETER	13.250 IN.
MAX. NO. STAGES	9
ONE STAGE WEIGHT	490 LB.
ADD STAGE WEIGHT	175 LB.
STD. SHAFT DIA.	1.938 IN.
STD. LATERAL	0.875 IN.
DISCHARGE SIZE	10 - 12 IN.
DISCHARGE CONNECTION	THD - FLG
SUCTION SIZE	10 - 12 IN.
SUCTION CONNECTION	THD
MAX. SPHERE SIZE	1.250 IN.
MAX. OPERATIONAL P.S.I.	540 (SPECIAL)

Performance based on pumping clear, fresh water at a temperature not over 85° F., free of gas, air or abrasives and with bowls properly adjusted and submerged. Performance curve reflects Hydraulic Institute tolerances and guidelines.



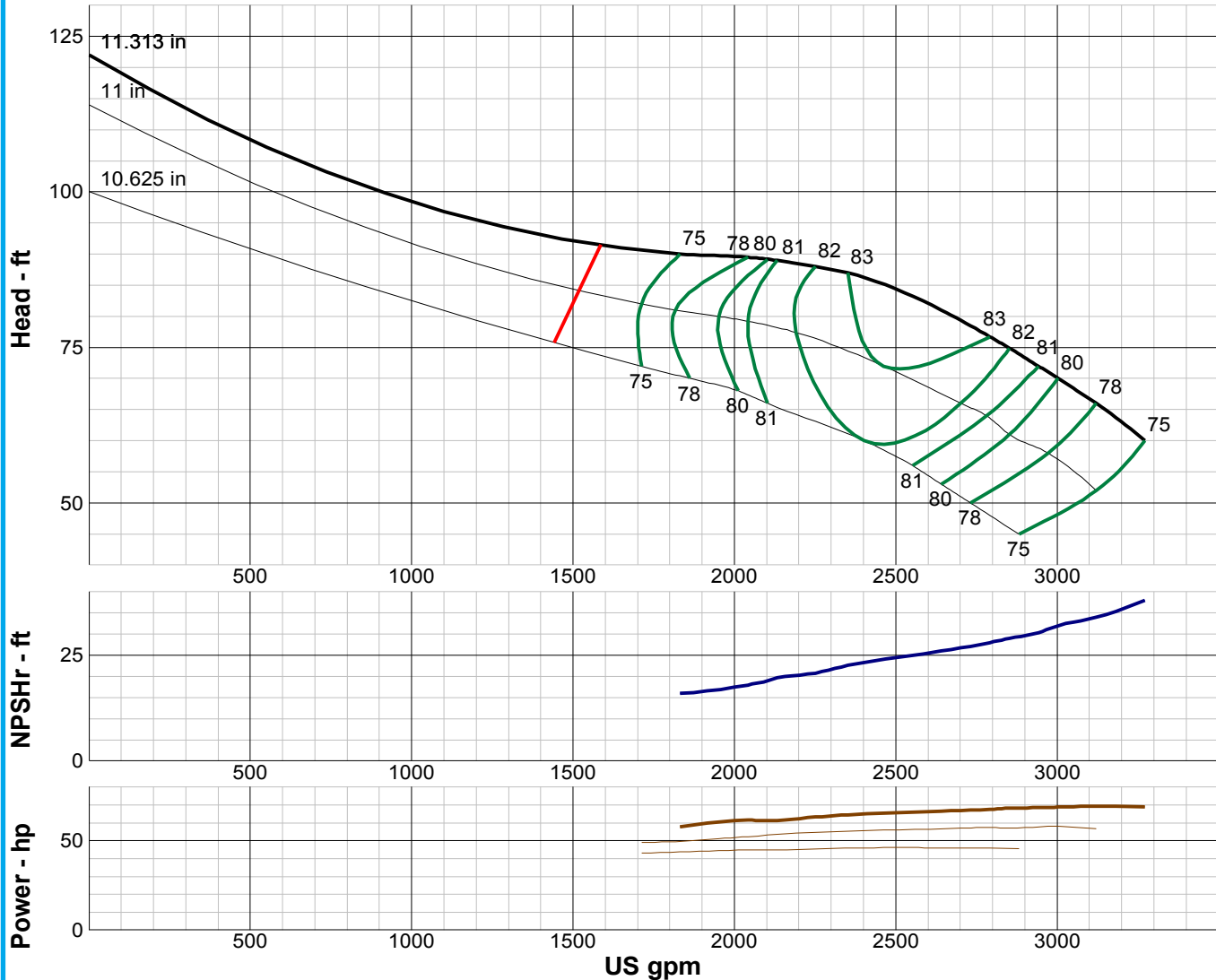
TURBINE PUMP CURVE

SINGLE STAGE PERFORMANCE

JANUARY 2010

480 SERIES

14XS 1750 RPM



IMPELLER DATA

IMPELLER NUMBER	3092	Minimum submergence above eye of bottom impeller: 32 IN.
TYPE	SEMI-OPEN	
THRUST FACTOR	K=23.40	
EYE AREA	40.9 SQ. IN.	
WEIGHT	20.25 LB.	

EFFICIENCY CORRECTION

NUMBER OF BOWLS:	1	2	3	4
CHANGE AS FOLLOWS:	-3	-2	-1	0
CHANGE IN EFFICIENCY MAY AFFECT BOTH HEAD AND HORSEPOWER.				

PUMP MATERIAL EFFICIENCY CORRECTION

	DUCTILE	BRONZE	NI-R	STAINLESS
IMPELLER MATERIAL:	-2	0	-1	-1
BOWL MATERIAL:	-2	-1	-2	-2

FLANGED BOWL DATA

BOWL NUMBER	3042
BOWL MAX. DIAMETER	13.500 IN.
BOWL MIN. DIAMETER	13.250 IN.
MAX. NO. STAGES	8
ONE STAGE WEIGHT	490 LB.
ADD STAGE WEIGHT	175 LB.
STD. SHAFT DIA.	1.938 IN.
STD. LATERAL	0.875 IN.
DISCHARGE SIZE	10 - 12 IN.
DISCHARGE CONNECTION	THD - FLG
SUCTION SIZE	10 - 12 IN.
SUCTION CONNECTION	THD
MAX. SPHERE SIZE	1.250 IN.
MAX. OPERATIONAL P.S.I.	540 (SPECIAL)

Performance based on pumping clear, fresh water at a temperature not over 85° F., free of gas, air or abrasives and with bowls properly adjusted and submerged. Performance curve reflects Hydraulic Institute tolerances and guidelines.



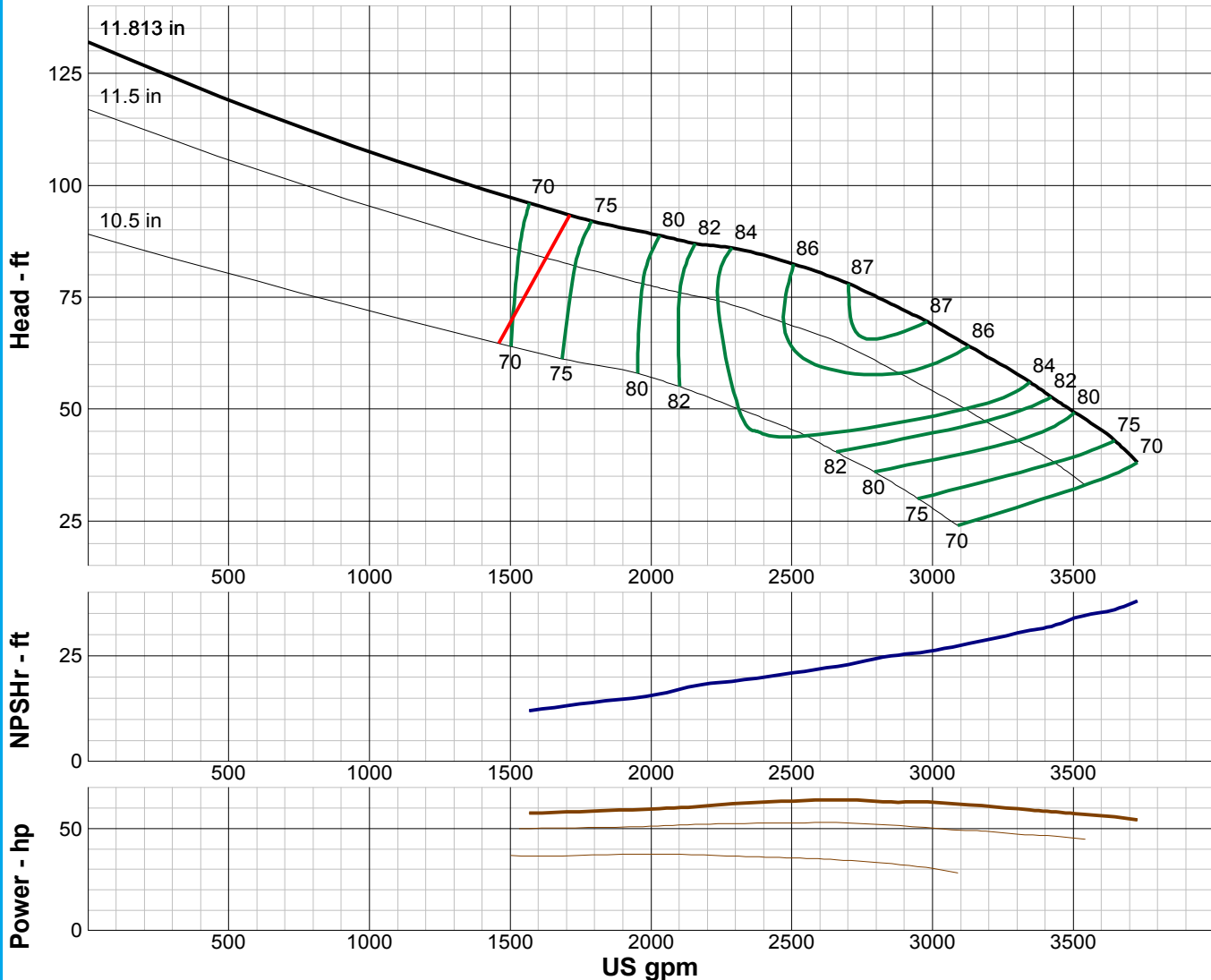
TURBINE PUMP CURVE

SINGLE STAGE PERFORMANCE

JANUARY 2010

480 SERIES

14WS 1750 RPM



IMPELLER DATA

IMPELLER NUMBER	4153	Minimum submergence above eye of bottom impeller: 34 IN.
TYPE	SEMI-OPEN	
THRUST FACTOR	K=26.20	
EYE AREA	47.3 SQ. IN.	
WEIGHT	23.25 LB.	

EFFICIENCY CORRECTION

NUMBER OF BOWLS:	1	2	3	4
CHANGE AS FOLLOWS:	-4	-2	-1	0

CHANGE IN EFFICIENCY MAY AFFECT BOTH HEAD AND HORSEPOWER.

PUMP MATERIAL EFFICIENCY CORRECTION

	DUCTILE	BRONZE	NI-R	STAINLESS
IMPELLER MATERIAL:	-2	0	-1	-1
BOWL MATERIAL:	-2	-1	-2	-2

FLANGED BOWL DATA

BOWL NUMBER	4152
BOWL MAX. DIAMETER	14.063 IN.
BOWL MIN. DIAMETER	13.750 IN.
MAX. NO. STAGES	9
ONE STAGE WEIGHT	500 LB.
ADD STAGE WEIGHT	185 LB.
STD. SHAFT DIA.	1.938 IN.
STD. LATERAL	0.875 IN.
DISCHARGE SIZE	10 - 12 IN.
DISCHARGE CONNECTION	THD - FLG
SUCTION SIZE	10 - 12 IN.
SUCTION CONNECTION	THD
MAX. SPHERE SIZE	1.500 IN.
MAX. OPERATIONAL P.S.I.	540 (SPECIAL)

Performance based on pumping clear, fresh water at a temperature not over 85° F., free of gas, air or abrasives and with bowls properly adjusted and submerged. Performance curve reflects Hydraulic Institute tolerances and guidelines.



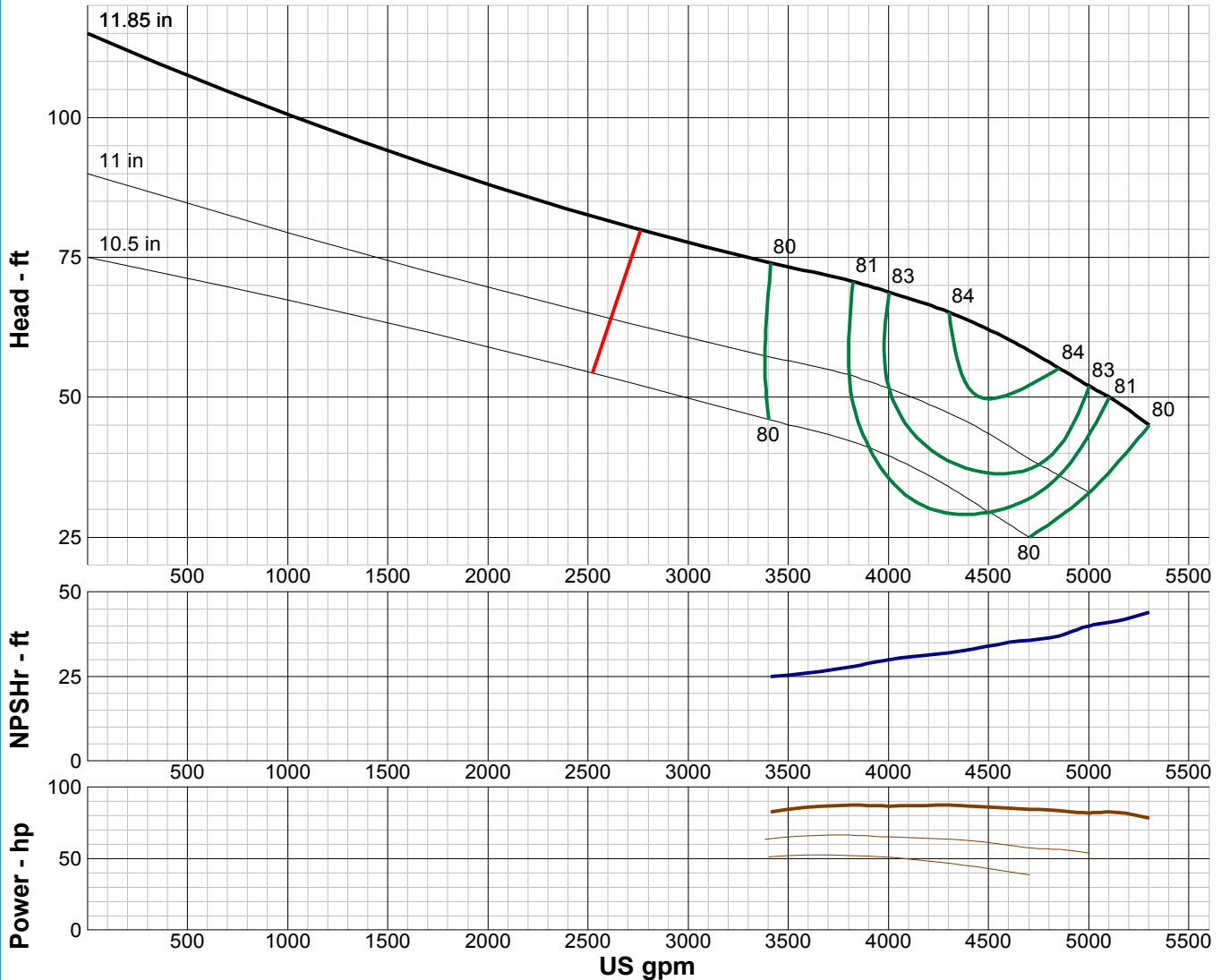
TURBINE PUMP CURVE

SINGLE STAGE PERFORMANCE

JANUARY 2010

480 SERIES

15KS 1750 RPM



IMPELLER DATA

IMPELLER NUMBER	0004	Minimum submergence above eye of bottom impeller: 36 IN.
TYPE	SEMI-OPEN	
THRUST FACTOR	K=30.00	
EYE AREA	63.6 SQ. IN.	
WEIGHT	21.00 LB.	

EFFICIENCY CORRECTION

NUMBER OF BOWLS:	1	2	3	4
CHANGE AS FOLLOWS:	-3	-2	-1	0
CHANGE IN EFFICIENCY MAY AFFECT BOTH HEAD AND HORSEPOWER.				

PUMP MATERIAL EFFICIENCY CORRECTION

	DUCTILE	BRONZE	NI-R	STAINLESS
IMPELLER MATERIAL:	-2	0	-1	-1
BOWL MATERIAL:	-2	-1	-2	-2

FLANGED BOWL DATA

BOWL NUMBER	0001
BOWL MAX. DIAMETER	15.250 IN.
BOWL MIN. DIAMETER	14.750 IN.
MAX. NO. STAGES	6
ONE STAGE WEIGHT	375 LB.
ADD STAGE WEIGHT	170 LB.
STD. SHAFT DIA.	1.938 IN.
STD. LATERAL	0.688 IN.
DISCHARGE SIZE	10 - 12 IN.
DISCHARGE CONNECTION	THD - FLG
SUCTION SIZE	10 - 12 IN.
SUCTION CONNECTION	THD
MAX. SPHERE SIZE	2.250 IN.
MAX. OPERATIONAL P.S.I.	540 (SPECIAL)

Performance based on pumping clear, fresh water at a temperature not over 85° F., free of gas, air or abrasives and with bowls properly adjusted and submerged. Performance curve reflects Hydraulic Institute tolerances and guidelines.