



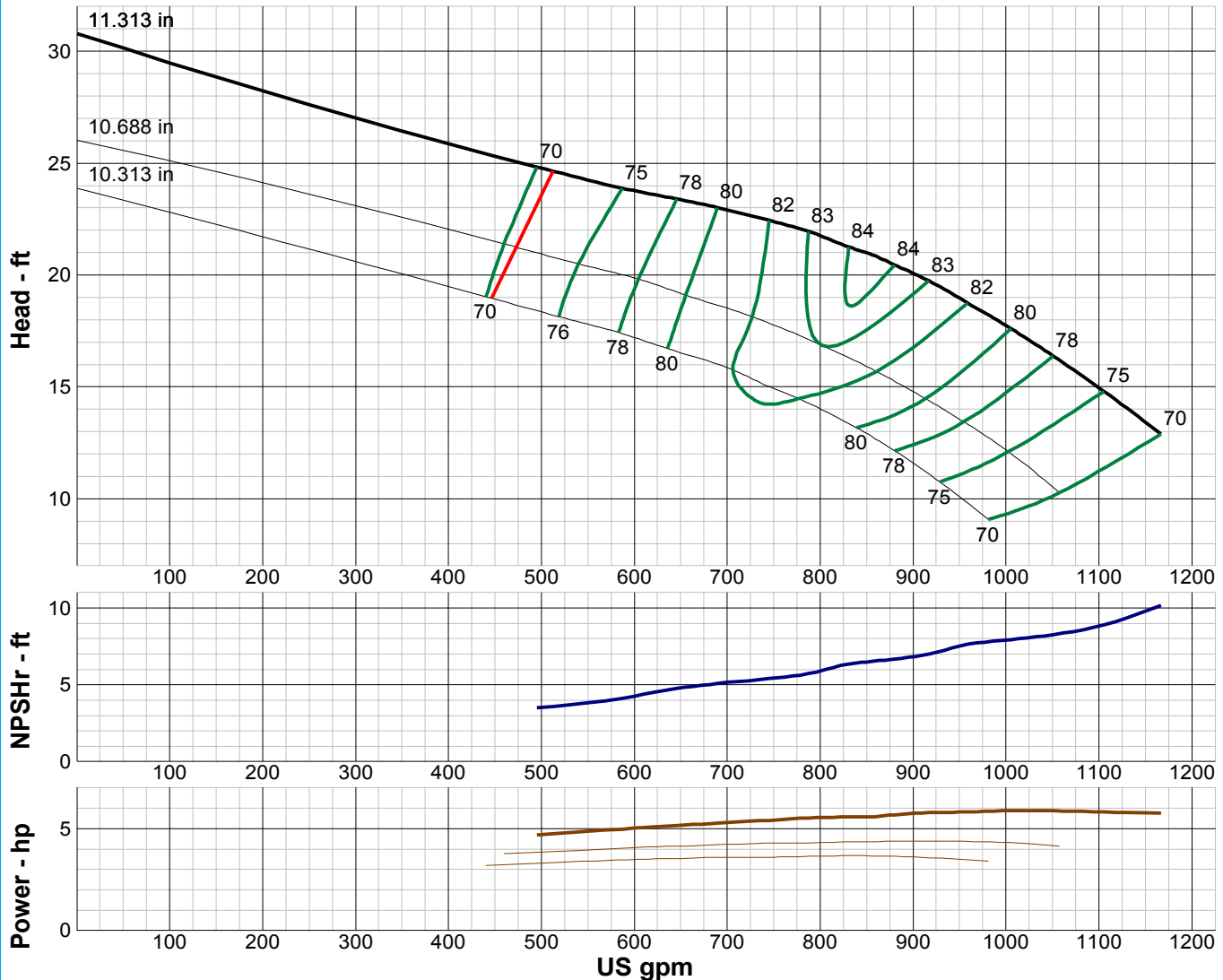
TURBINE PUMP CURVE

SINGLE STAGE PERFORMANCE

JANUARY 2010

480 SERIES

14LC 870 RPM



IMPELLER DATA

IMPELLER NUMBER	3105	Minimum submergence above eye of bottom impeller: 30 IN.
TYPE	ENCLOSED	
THRUST FACTOR	K=17.20	
EYE AREA	31.5 SQ. IN.	
WEIGHT	28.00 LB.	

EFFICIENCY CORRECTION

NUMBER OF BOWLS:	1	2	3	4
CHANGE AS FOLLOWS:	-4	-2	-1	0
CHANGE IN EFFICIENCY MAY AFFECT BOTH HEAD AND HORSEPOWER.				

PUMP MATERIAL EFFICIENCY CORRECTION

	DUCTILE	BRONZE	NI-R	STAINLESS
IMPELLER MATERIAL:	-2	0	-1	-1
BOWL MATERIAL:	-2	-1	-2	-2

FLANGED BOWL DATA

BOWL NUMBER	3106
BOWL MAX. DIAMETER	13.500 IN.
BOWL MIN. DIAMETER	13.250 IN.
MAX. NO. STAGES	27
ONE STAGE WEIGHT	490 LB.
ADD STAGE WEIGHT	175 LB.
STD. SHAFT DIA.	1.938 IN.
STD. LATERAL	0.875 IN.
DISCHARGE SIZE	10 - 12 IN.
DISCHARGE CONNECTION	THD - FLG
SUCTION SIZE	10 - 12 IN.
SUCTION CONNECTION	THD
MAX. SPHERE SIZE	0.750 IN.
MAX. OPERATIONAL P.S.I.	540 (SPECIAL)

Performance based on pumping clear, fresh water at a temperature not over 85° F., free of gas, air or abrasives and with bowls properly adjusted and submerged. Performance curve reflects Hydraulic Institute tolerances and guidelines.



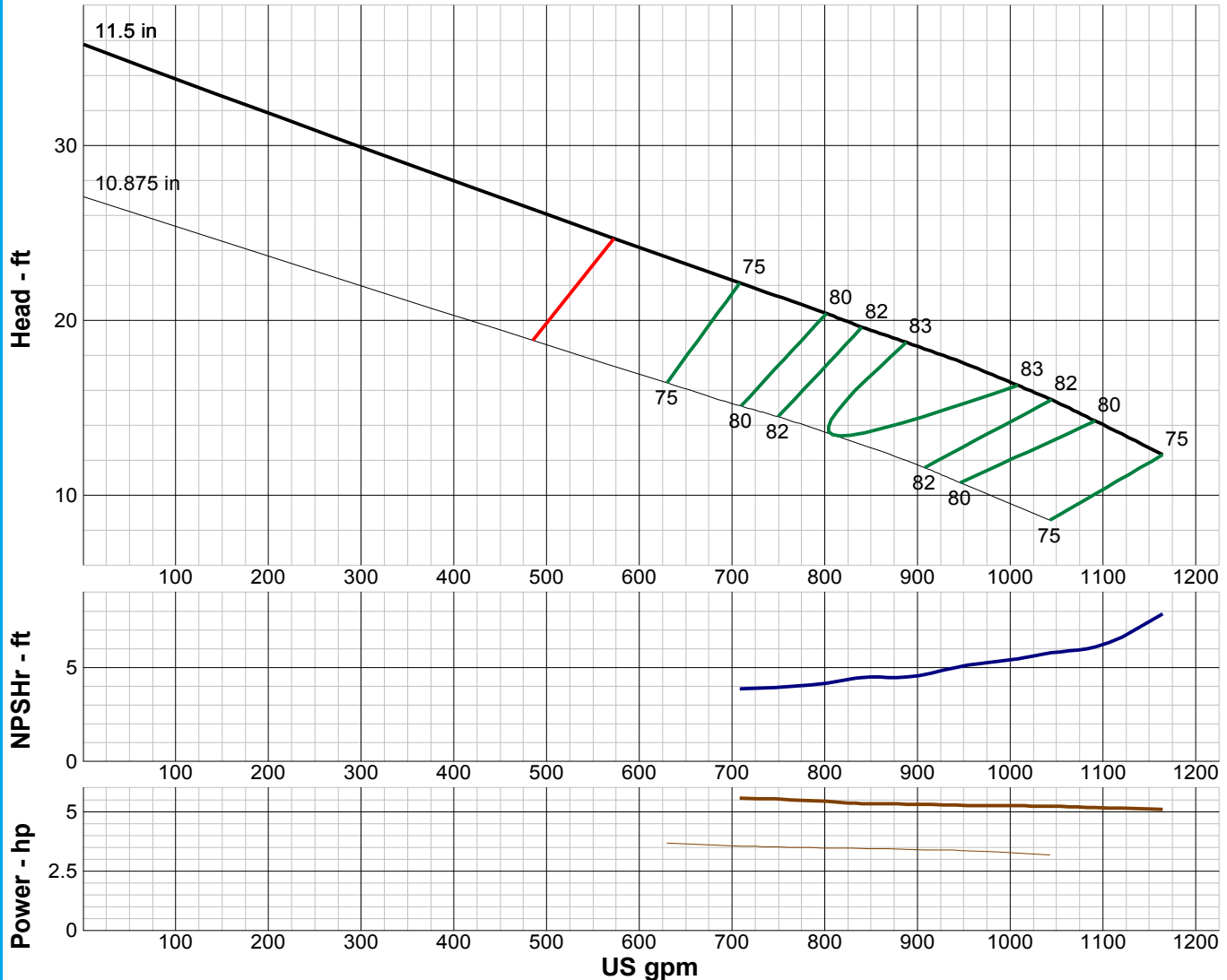
TURBINE PUMP CURVE

SINGLE STAGE PERFORMANCE

JANUARY 2010

480 SERIES

14LCR 870 RPM



IMPELLER DATA

IMPELLER NUMBER	0098	Minimum submergence above eye of bottom impeller: 36 IN.
TYPE	ENCLOSED	
THRUST FACTOR	K=15.50	
EYE AREA	37.8 SQ. IN.	
WEIGHT	26.00 LB.	

EFFICIENCY CORRECTION

NUMBER OF BOWLS:	1	2	3		
CHANGE AS FOLLOWS:	-4	-2	0		
CHANGE IN EFFICIENCY MAY AFFECT BOTH HEAD AND HORSEPOWER.					

PUMP MATERIAL EFFICIENCY CORRECTION

	DUCTILE	BRONZE	NI-R	STAINLESS
IMPELLER MATERIAL:	-2	0	-1	-1
BOWL MATERIAL:	-2	-1	-2	-2

FLANGED BOWL DATA

BOWL NUMBER	5447
BOWL MAX. DIAMETER	14.250 IN.
BOWL MIN. DIAMETER	14.125 IN.
MAX. NO. STAGES	14
ONE STAGE WEIGHT	700 LB.
ADD STAGE WEIGHT	265 LB.
STD. SHAFT DIA.	2.188 IN.
STD. LATERAL	0.813 IN.
DISCHARGE SIZE	10 - 12 IN.
DISCHARGE CONNECTION	THD - FLG
SUCTION SIZE	10 - 12 IN.
SUCTION CONNECTION	THD
MAX. SPHERE SIZE	1.250 IN.
MAX. OPERATIONAL P.S.I.	540 (SPECIAL)

Performance based on pumping clear, fresh water at a temperature not over 85° F., free of gas, air or abrasives and with bowls properly adjusted and submerged. Performance curve reflects Hydraulic Institute tolerances and guidelines.



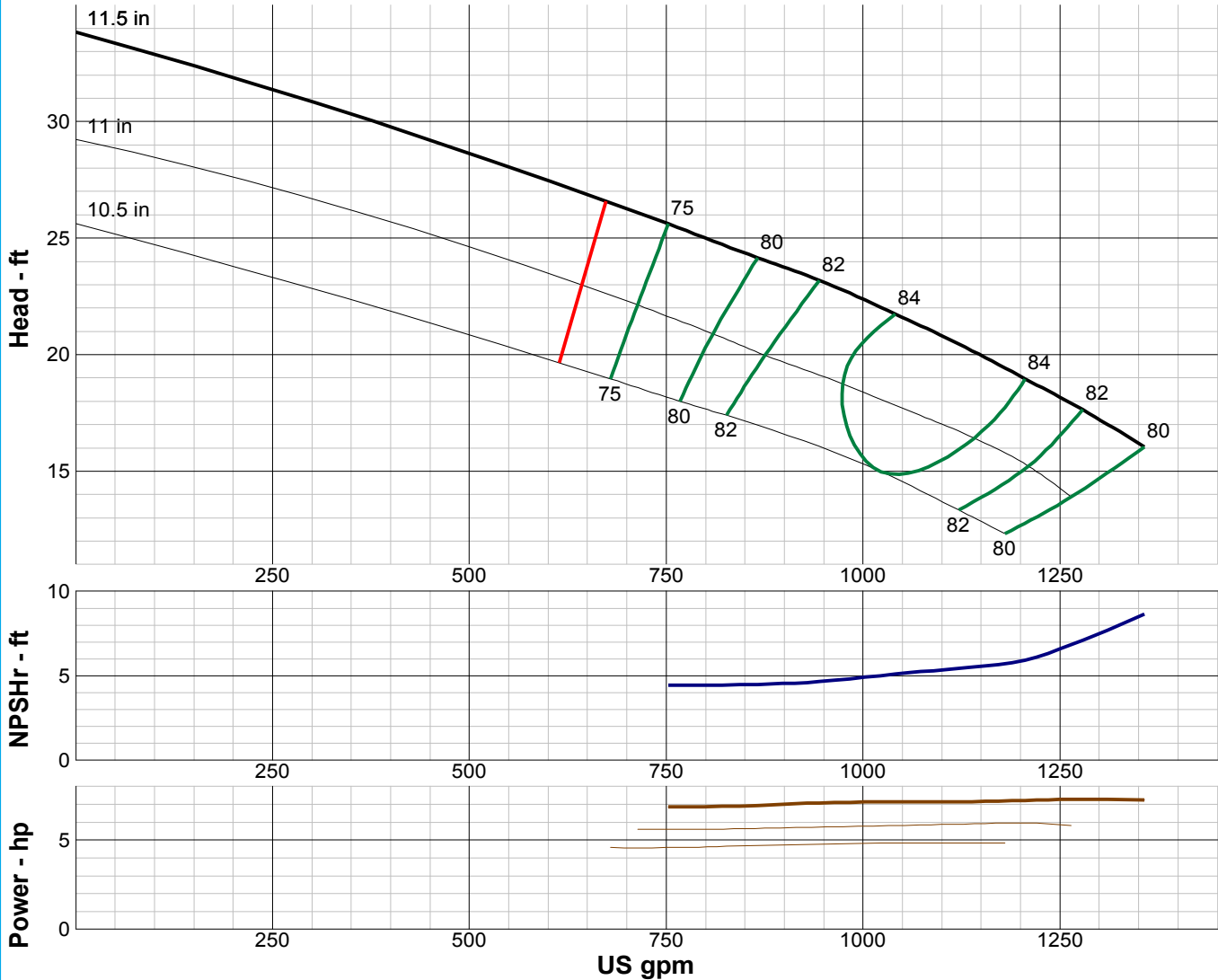
TURBINE PUMP CURVE

SINGLE STAGE PERFORMANCE

JANUARY 2010

480 SERIES

14MCR 870 RPM



IMPELLER DATA

IMPELLER NUMBER	0101	Minimum submergence above eye of bottom impeller: 36 IN.
TYPE	ENCLOSED	
THRUST FACTOR	K=15.50	
EYE AREA	37.8 SQ. IN.	
WEIGHT	26.00 LB.	

EFFICIENCY CORRECTION

NUMBER OF BOWLS:	1	2	3		
CHANGE AS FOLLOWS:	-4	-2	0		

CHANGE IN EFFICIENCY MAY AFFECT BOTH HEAD AND HORSEPOWER.

PUMP MATERIAL EFFICIENCY CORRECTION

	DUCTILE	BRONZE	NI-R	STAINLESS
IMPELLER MATERIAL:	-2	0	-1	-1
BOWL MATERIAL:	-2	-1	-2	-2

FLANGED BOWL DATA

BOWL NUMBER	5447
BOWL MAX. DIAMETER	14.250 IN.
BOWL MIN. DIAMETER	14.125 IN.
MAX. NO. STAGES	14
ONE STAGE WEIGHT	700 LB.
ADD STAGE WEIGHT	265 LB.
STD. SHAFT DIA.	2.188 IN.
STD. LATERAL	0.813 IN.
DISCHARGE SIZE	10 - 12 IN.
DISCHARGE CONNECTION	THD - FLG
SUCTION SIZE	10 - 12 IN.
SUCTION CONNECTION	THD
MAX. SPHERE SIZE	1.250 IN.
MAX. OPERATIONAL P.S.I.	540 (SPECIAL)

Performance based on pumping clear, fresh water at a temperature not over 85° F., free of gas, air or abrasives and with bowls properly adjusted and submerged. Performance curve reflects Hydraulic Institute tolerances and guidelines.



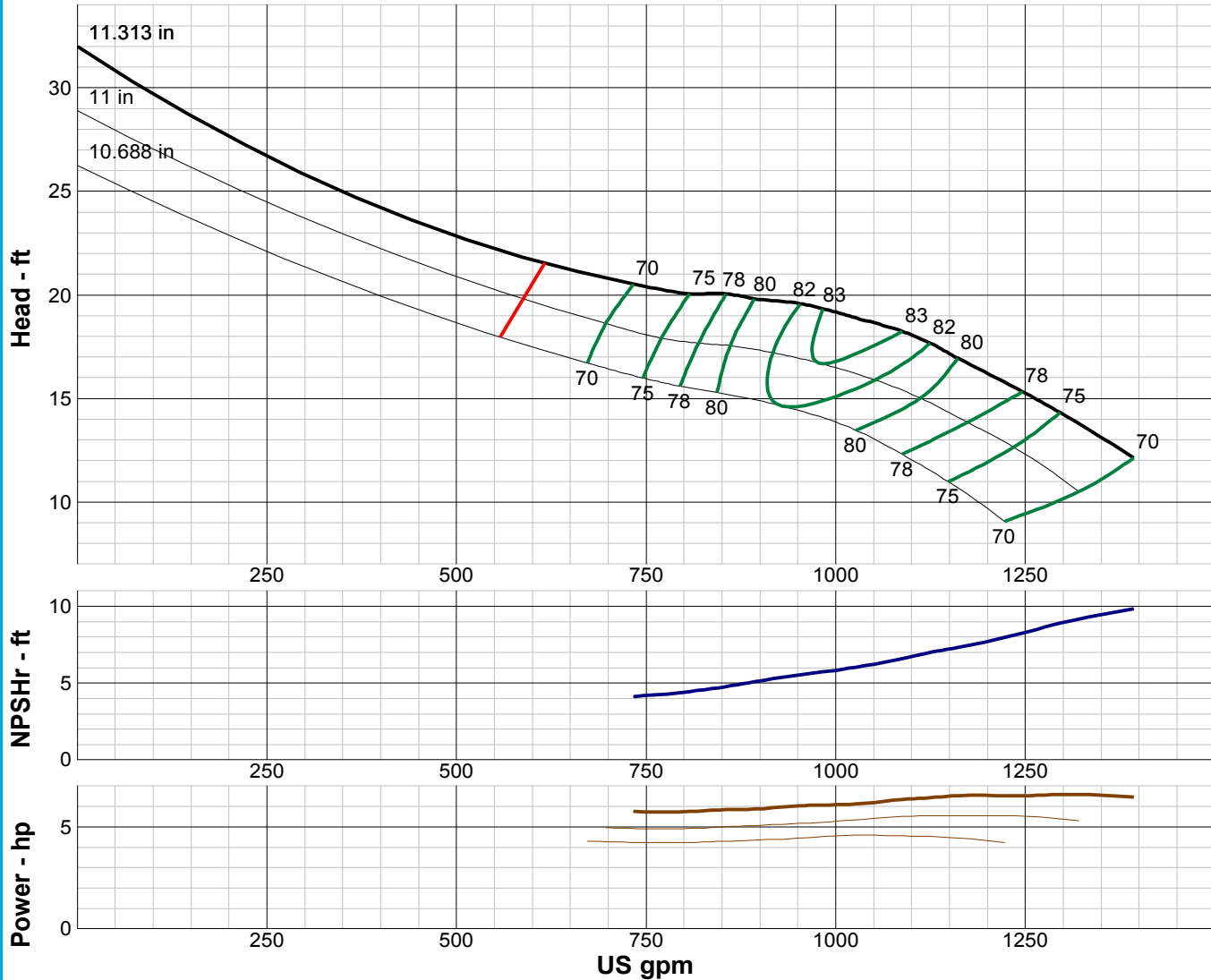
TURBINE PUMP CURVE

SINGLE STAGE PERFORMANCE

JANUARY 2010

480 SERIES

14MC 870 RPM



IMPELLER DATA		
IMPELLER NUMBER	3065	Minimum submergence above eye of bottom impeller: 30 IN.
TYPE	ENCLOSED	
THRUST FACTOR	K=21.80	
EYE AREA	40.9 SQ. IN.	
WEIGHT	28.00 LB.	

FLANGED BOWL DATA	
BOWL NUMBER	3042
BOWL MAX. DIAMETER	13.500 IN.
BOWL MIN. DIAMETER	13.250 IN.
MAX. NO. STAGES	23
ONE STAGE WEIGHT	490 LB.
ADD STAGE WEIGHT	175 LB.
STD. SHAFT DIA.	1.938 IN.
STD. LATERAL	0.875 IN.
DISCHARGE SIZE	10 - 12 IN.
DISCHARGE CONNECTION	THD - FLG
SUCTION SIZE	10 - 12 IN.
SUCTION CONNECTION	THD
MAX. SPHERE SIZE	1.250 IN.
MAX. OPERATIONAL P.S.I.	540 (SPECIAL)

EFFICIENCY CORRECTION					
NUMBER OF BOWLS:	1	2	3	4	
CHANGE AS FOLLOWS:	-4	-2	-1	0	
CHANGE IN EFFICIENCY MAY AFFECT BOTH HEAD AND HORSEPOWER.					

PUMP MATERIAL EFFICIENCY CORRECTION				
	DUCTILE	BRONZE	NI-R	STAINLESS
IMPELLER MATERIAL:	-2	0	-1	-1
BOWL MATERIAL:	-2	-1	-2	-2

Performance based on pumping clear, fresh water at a temperature not over 85° F., free of gas, air or abrasives and with bowls properly adjusted and submerged. Performance curve reflects Hydraulic Institute tolerances and guidelines.



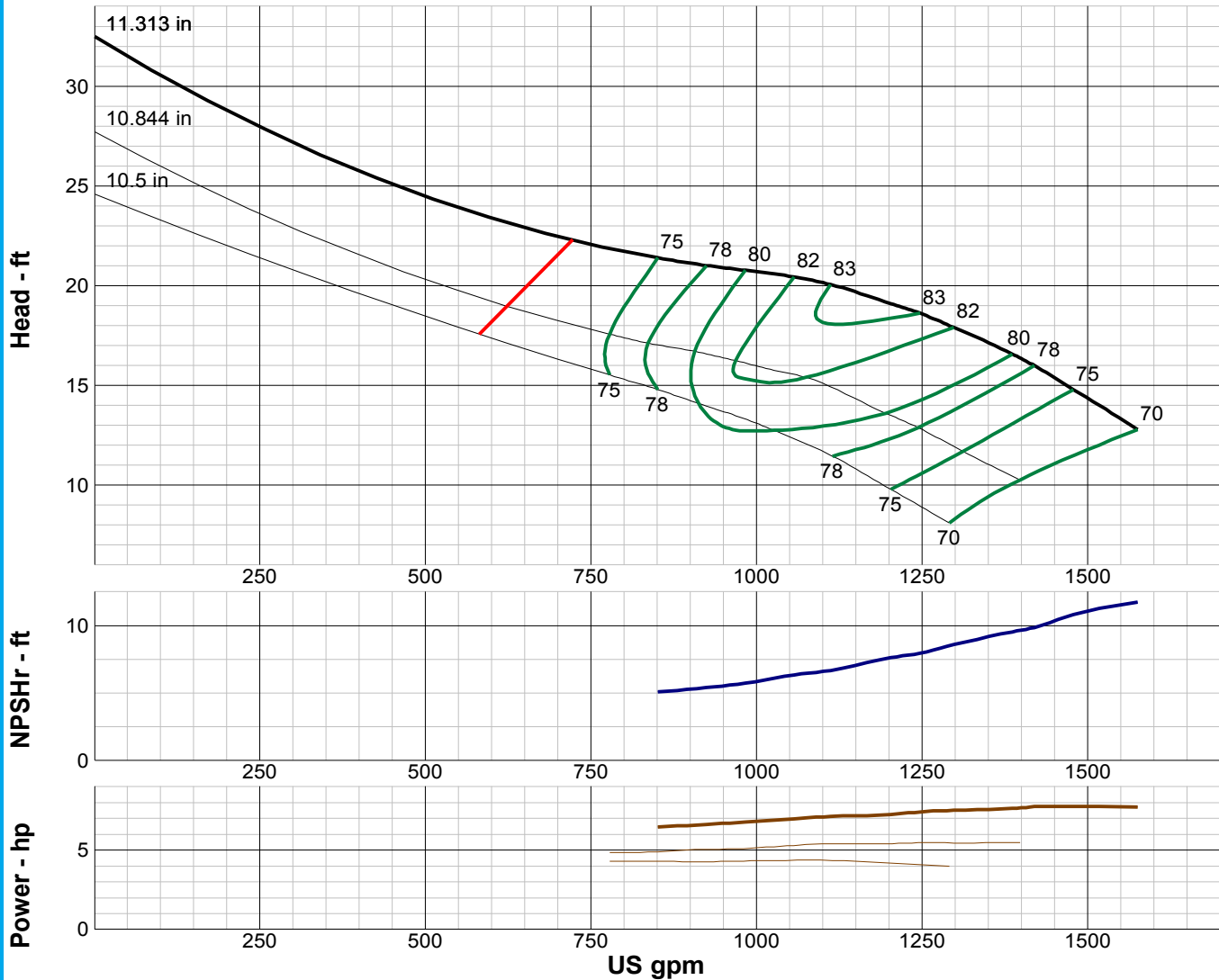
TURBINE PUMP CURVE

SINGLE STAGE PERFORMANCE

JANUARY 2010

480 SERIES

14HC 860 RPM



IMPELLER DATA		
IMPELLER NUMBER	3029	Minimum submergence above eye of bottom impeller: 32 IN.
TYPE	ENCLOSED	
THRUST FACTOR	K=21.80	
EYE AREA	40.9 SQ. IN.	
WEIGHT	30.25 LB.	

EFFICIENCY CORRECTION					
NUMBER OF BOWLS:	1	2	3	4	
CHANGE AS FOLLOWS:	-4	-2	-1	0	
CHANGE IN EFFICIENCY MAY AFFECT BOTH HEAD AND HORSEPOWER.					

PUMP MATERIAL EFFICIENCY CORRECTION				
	DUCTILE	BRONZE	NI-R	STAINLESS
IMPELLER MATERIAL:	-2	0	-1	-1
BOWL MATERIAL:	-2	-1	-2	-2

FLANGED BOWL DATA	
BOWL NUMBER	3042
BOWL MAX. DIAMETER	13.500 IN.
BOWL MIN. DIAMETER	13.250 IN.
MAX. NO. STAGES	19
ONE STAGE WEIGHT	490 LB.
ADD STAGE WEIGHT	175 LB.
STD. SHAFT DIA.	1.938 IN.
STD. LATERAL	0.875 IN.
DISCHARGE SIZE	10 - 12 IN.
DISCHARGE CONNECTION	THD - FLG
SUCTION SIZE	10 - 12 IN.
SUCTION CONNECTION	THD
MAX. SPHERE SIZE	1.250 IN.
MAX. OPERATIONAL P.S.I.	540 (SPECIAL)

Performance based on pumping clear, fresh water at a temperature not over 85° F., free of gas, air or abrasives and with bowls properly adjusted and submerged. Performance curve reflects Hydraulic Institute tolerances and guidelines.



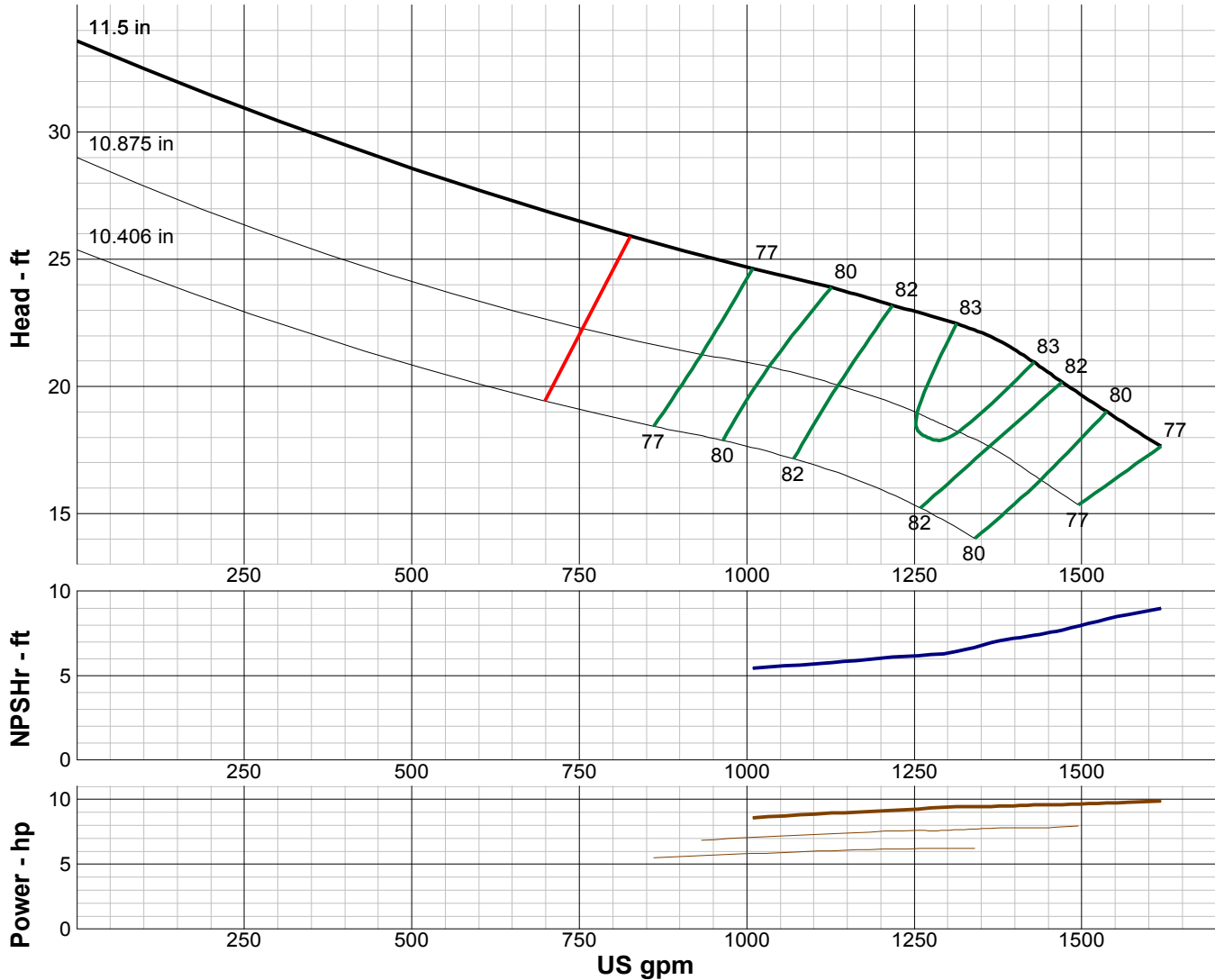
TURBINE PUMP CURVE

SINGLE STAGE PERFORMANCE

JANUARY 2010

480 SERIES

14HCR 870 RPM



IMPELLER DATA		
IMPELLER NUMBER	0103	Minimum submergence above eye of bottom impeller: 36 IN.
TYPE	ENCLOSED	
THRUST FACTOR	K=15.50	
EYE AREA	37.8 SQ. IN.	
WEIGHT	26.00 LB.	

EFFICIENCY CORRECTION				
NUMBER OF BOWLS:	1	2	3	
CHANGE AS FOLLOWS:	-4	-2	0	
CHANGE IN EFFICIENCY MAY AFFECT BOTH HEAD AND HORSEPOWER.				

PUMP MATERIAL EFFICIENCY CORRECTION				
	DUCTILE	BRONZE	NI-R	STAINLESS
IMPELLER MATERIAL:	-2	0	-1	-1
BOWL MATERIAL:	-2	-1	-2	-2

FLANGED BOWL DATA	
BOWL NUMBER	5447
BOWL MAX. DIAMETER	14.250 IN.
BOWL MIN. DIAMETER	14.125 IN.
MAX. NO. STAGES	16
ONE STAGE WEIGHT	700 LB.
ADD STAGE WEIGHT	265 LB.
STD. SHAFT DIA.	2.188 IN.
STD. LATERAL	0.813 IN.
DISCHARGE SIZE	10 - 12 IN.
DISCHARGE CONNECTION	THD - FLG
SUCTION SIZE	10 - 12 IN.
SUCTION CONNECTION	THD
MAX. SPHERE SIZE	1.250 IN.
MAX. OPERATIONAL P.S.I.	540 (SPECIAL)

Performance based on pumping clear, fresh water at a temperature not over 85° F., free of gas, air or abrasives and with bowls properly adjusted and submerged. Performance curve reflects Hydraulic Institute tolerances and guidelines.



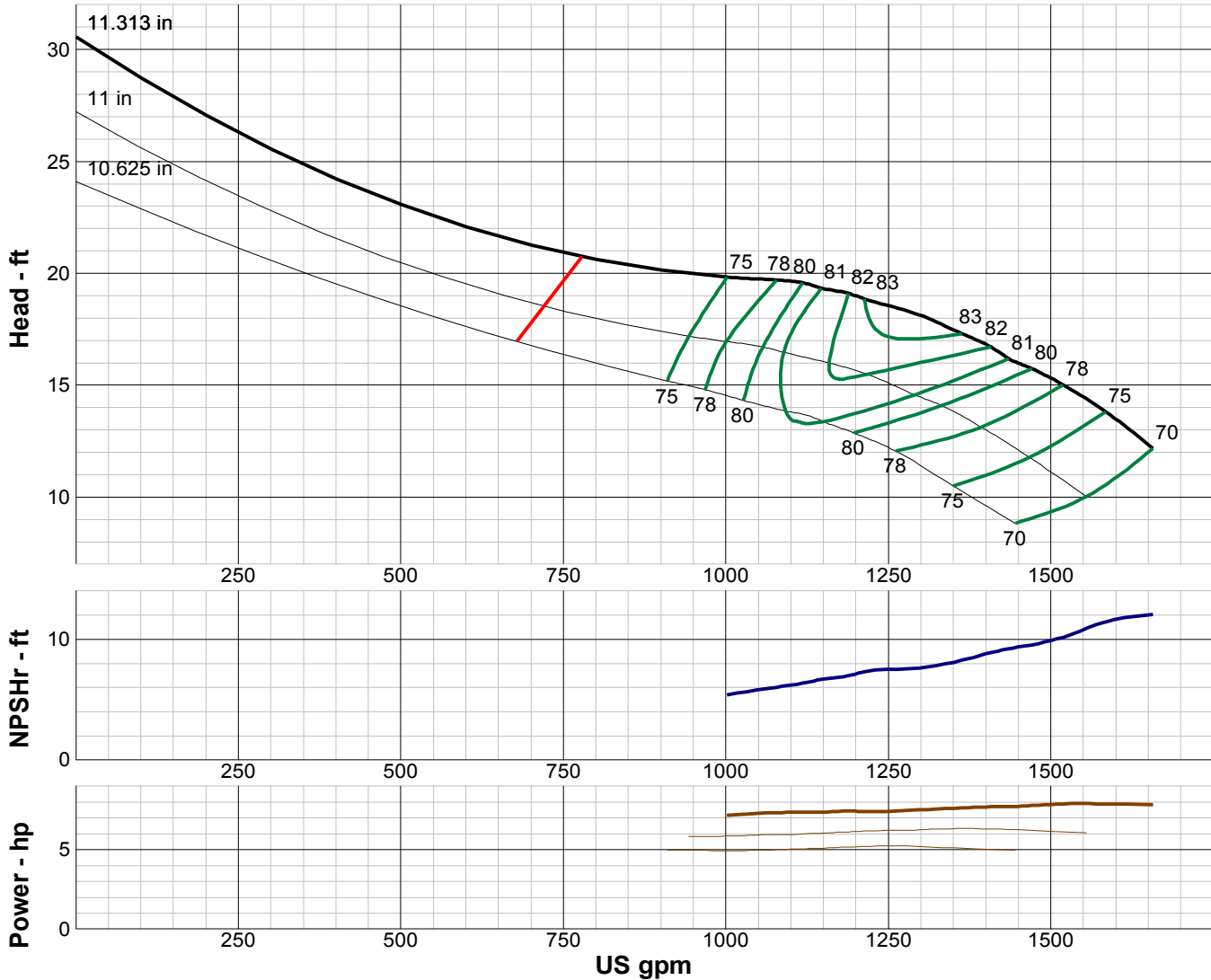
TURBINE PUMP CURVE

SINGLE STAGE PERFORMANCE

JANUARY 2010

480 SERIES

14XC 870 RPM



IMPELLER DATA		
IMPELLER NUMBER	3086	Minimum submergence above eye of bottom impeller: 32 IN.
TYPE	ENCLOSED	
THRUST FACTOR	K=21.80	
EYE AREA	40.9 SQ. IN.	
WEIGHT	29.25 LB.	

EFFICIENCY CORRECTION					
NUMBER OF BOWLS:	1	2	3	4	
CHANGE AS FOLLOWS:	-5	-3	-1	0	
CHANGE IN EFFICIENCY MAY AFFECT BOTH HEAD AND HORSEPOWER.					

PUMP MATERIAL EFFICIENCY CORRECTION				
	DUCTILE	BRONZE	NI-R	STAINLESS
IMPELLER MATERIAL:	-2	0	-1	-1
BOWL MATERIAL:	-2	-1	-2	-2

FLANGED BOWL DATA	
BOWL NUMBER	3042
BOWL MAX. DIAMETER	13.500 IN.
BOWL MIN. DIAMETER	13.250 IN.
MAX. NO. STAGES	20
ONE STAGE WEIGHT	490 LB.
ADD STAGE WEIGHT	175 LB.
STD. SHAFT DIA.	1.938 IN.
STD. LATERAL	0.875 IN.
DISCHARGE SIZE	10 - 12 IN.
DISCHARGE CONNECTION	THD - FLG
SUCTION SIZE	10 - 12 IN.
SUCTION CONNECTION	THD
MAX. SPHERE SIZE	1.250 IN.
MAX. OPERATIONAL P.S.I.	540 (SPECIAL)

Performance based on pumping clear, fresh water at a temperature not over 85° F., free of gas, air or abrasives and with bowls properly adjusted and submerged. Performance curve reflects Hydraulic Institute tolerances and guidelines.



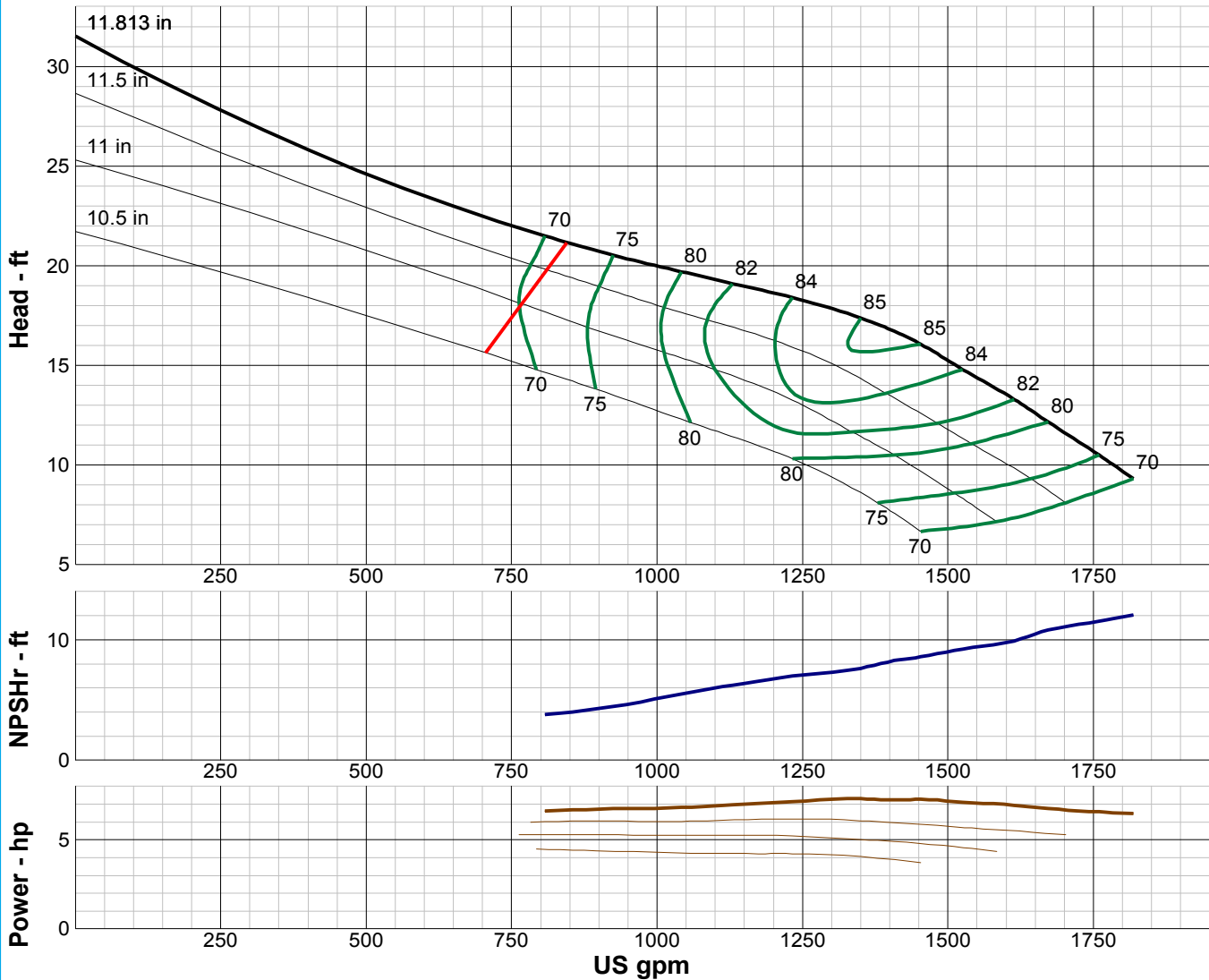
TURBINE PUMP CURVE

SINGLE STAGE PERFORMANCE

JANUARY 2010

480 SERIES

14WC 870 RPM



IMPELLER DATA		
IMPELLER NUMBER	4151	Minimum submergence above eye of bottom impeller: 34 IN.
TYPE	ENCLOSED	
THRUST FACTOR	K=24.80	
EYE AREA	47.4 SQ. IN.	
WEIGHT	31.75 LB.	

EFFICIENCY CORRECTION					
NUMBER OF BOWLS:	1	2	3	4	
CHANGE AS FOLLOWS:	-4	-2	-1	0	
CHANGE IN EFFICIENCY MAY AFFECT BOTH HEAD AND HORSEPOWER.					

PUMP MATERIAL EFFICIENCY CORRECTION				
	DUCTILE	BRONZE	NI-R	STAINLESS
IMPELLER MATERIAL:	-2	0	-1	-1
BOWL MATERIAL:	-2	-1	-2	-2

FLANGED BOWL DATA	
BOWL NUMBER	4152
BOWL MAX. DIAMETER	14.063 IN.
BOWL MIN. DIAMETER	13.750 IN.
MAX. NO. STAGES	21
ONE STAGE WEIGHT	500 LB.
ADD STAGE WEIGHT	185 LB.
STD. SHAFT DIA.	1.938 IN.
STD. LATERAL	0.875 IN.
DISCHARGE SIZE	10 - 12 IN.
DISCHARGE CONNECTION	THD -FLG
SUCTION SIZE	10 - 12 IN.
SUCTION CONNECTION	THD
MAX. SPHERE SIZE	1.500 IN.
MAX. OPERATIONAL P.S.I.	540 (SPECIAL)

Performance based on pumping clear, fresh water at a temperature not over 85° F., free of gas, air or abrasives and with bowls properly adjusted and submerged. Performance curve reflects Hydraulic Institute tolerances and guidelines.



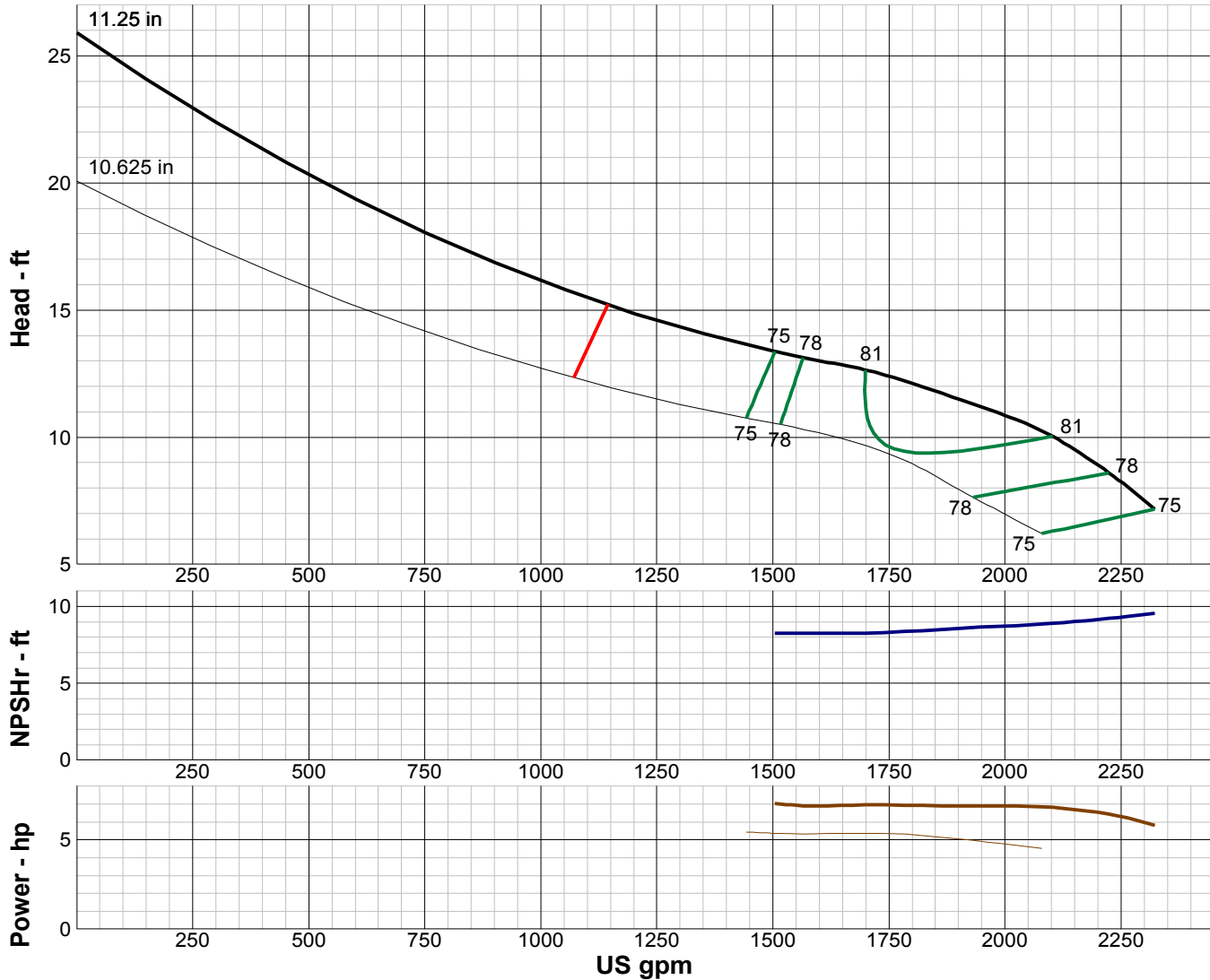
TURBINE PUMP CURVE

SINGLE STAGE PERFORMANCE

JANUARY 2010

480 SERIES

14YC 870 RPM



IMPELLER DATA

IMPELLER NUMBER	3878	Minimum submergence above eye of bottom impeller: 34 IN.
TYPE	ENCLOSED	
THRUST FACTOR	K=24.00	
EYE AREA	57.0 SQ. IN.	
WEIGHT	28.00 LB.	

EFFICIENCY CORRECTION

NUMBER OF BOWLS:	1	2	3	4	
CHANGE AS FOLLOWS:	-3	-2	-1	0	

CHANGE IN EFFICIENCY MAY AFFECT BOTH HEAD AND HORSEPOWER.

PUMP MATERIAL EFFICIENCY CORRECTION

	DUCTILE	BRONZE	NI-R	STAINLESS
IMPELLER MATERIAL:	-2	0	-1	-1
BOWL MATERIAL:	-2	-1	-2	-2

FLANGED BOWL DATA

BOWL NUMBER	3869
BOWL MAX. DIAMETER	13.750 IN.
BOWL MIN. DIAMETER	13.500 IN.
MAX. NO. STAGES	15
ONE STAGE WEIGHT	335 LB.
ADD STAGE WEIGHT	188 LB.
STD. SHAFT DIA.	1.938 IN.
STD. LATERAL	0.635 IN.
DISCHARGE SIZE	10 - 12 IN.
DISCHARGE CONNECTION	THD - FLG
SUCTION SIZE	10 - 12 IN.
SUCTION CONNECTION	THD
MAX. SPHERE SIZE	1.250 IN.
MAX. OPERATIONAL P.S.I.	540 (SPECIAL)

Performance based on pumping clear, fresh water at a temperature not over 85° F., free of gas, air or abrasives and with bowls properly adjusted and submerged. Performance curve reflects Hydraulic Institute tolerances and guidelines.



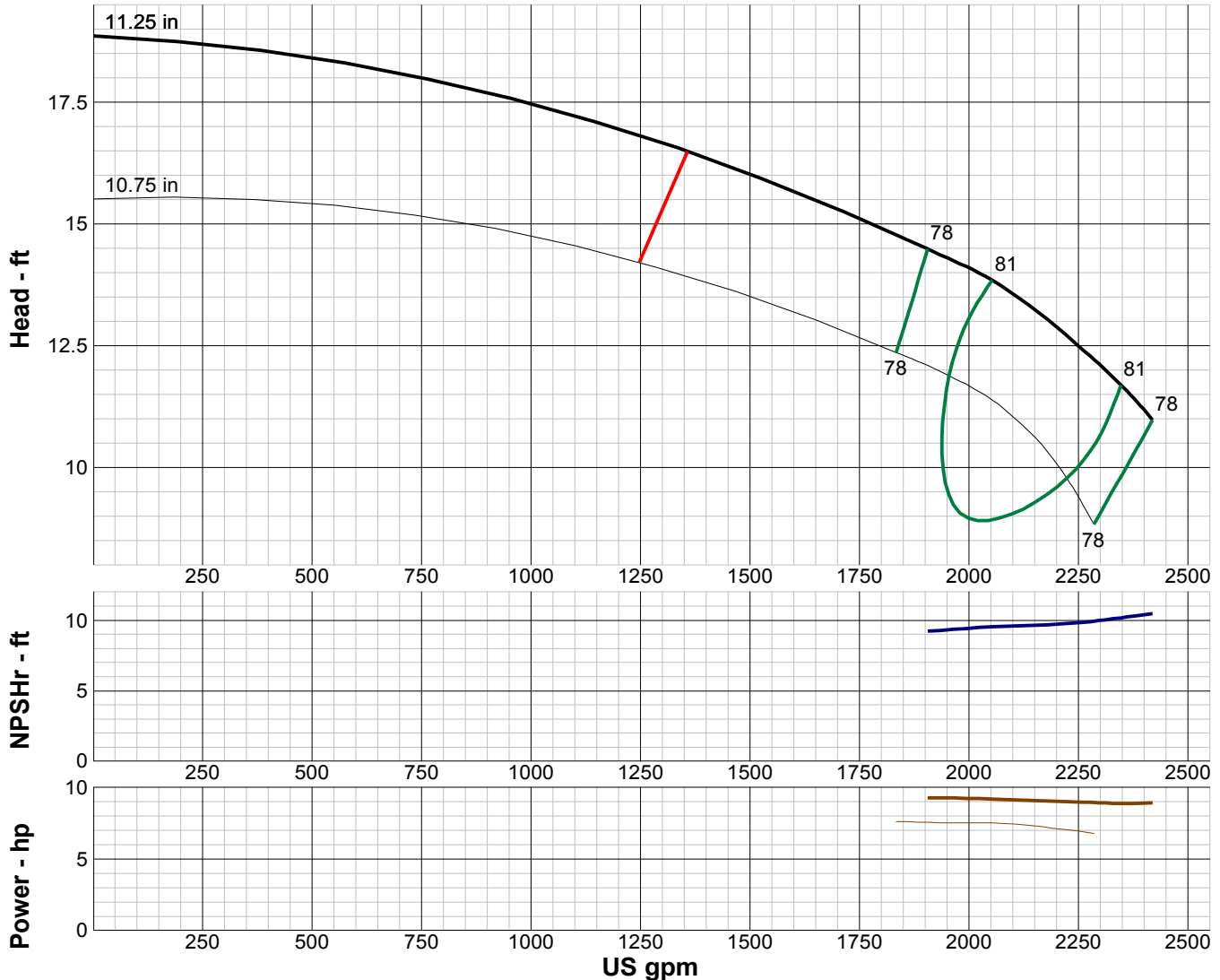
TURBINE PUMP CURVE

SINGLE STAGE PERFORMANCE

JANUARY 2010

480 SERIES

14ZC 870 RPM



IMPELLER DATA		
IMPELLER NUMBER	3896	Minimum submergence above eye of bottom impeller: 34 IN.
TYPE	ENCLOSED	
THRUST FACTOR	K=24.70	
EYE AREA	58.5 SQ. IN.	
WEIGHT	28.00 LB.	

EFFICIENCY CORRECTION					
NUMBER OF BOWLS:	1	2	3	4	
CHANGE AS FOLLOWS:	-3	-2	-1	0	
CHANGE IN EFFICIENCY MAY AFFECT BOTH HEAD AND HORSEPOWER.					

PUMP MATERIAL EFFICIENCY CORRECTION				
	DUCTILE	BRONZE	NI-R	STAINLESS
IMPELLER MATERIAL:	-2	0	-1	-1
BOWL MATERIAL:	-2	-1	-2	-2

FLANGED BOWL DATA	
BOWL NUMBER	3869
BOWL MAX. DIAMETER	13.750 IN.
BOWL MIN. DIAMETER	13.500 IN.
MAX. NO. STAGES	12
ONE STAGE WEIGHT	335 LB.
ADD STAGE WEIGHT	188 LB.
STD. SHAFT DIA.	1.938 IN.
STD. LATERAL	0.625 IN.
DISCHARGE SIZE	10 - 12 IN.
DISCHARGE CONNECTION	THD - FLG
SUCTION SIZE	10 - 12 IN.
SUCTION CONNECTION	THD
MAX. SPHERE SIZE	1.250 IN.
MAX. OPERATIONAL P.S.I.	540 (SPECIAL)

Performance based on pumping clear, fresh water at a temperature not over 85° F., free of gas, air or abrasives and with bowls properly adjusted and submerged. Performance curve reflects Hydraulic Institute tolerances and guidelines.



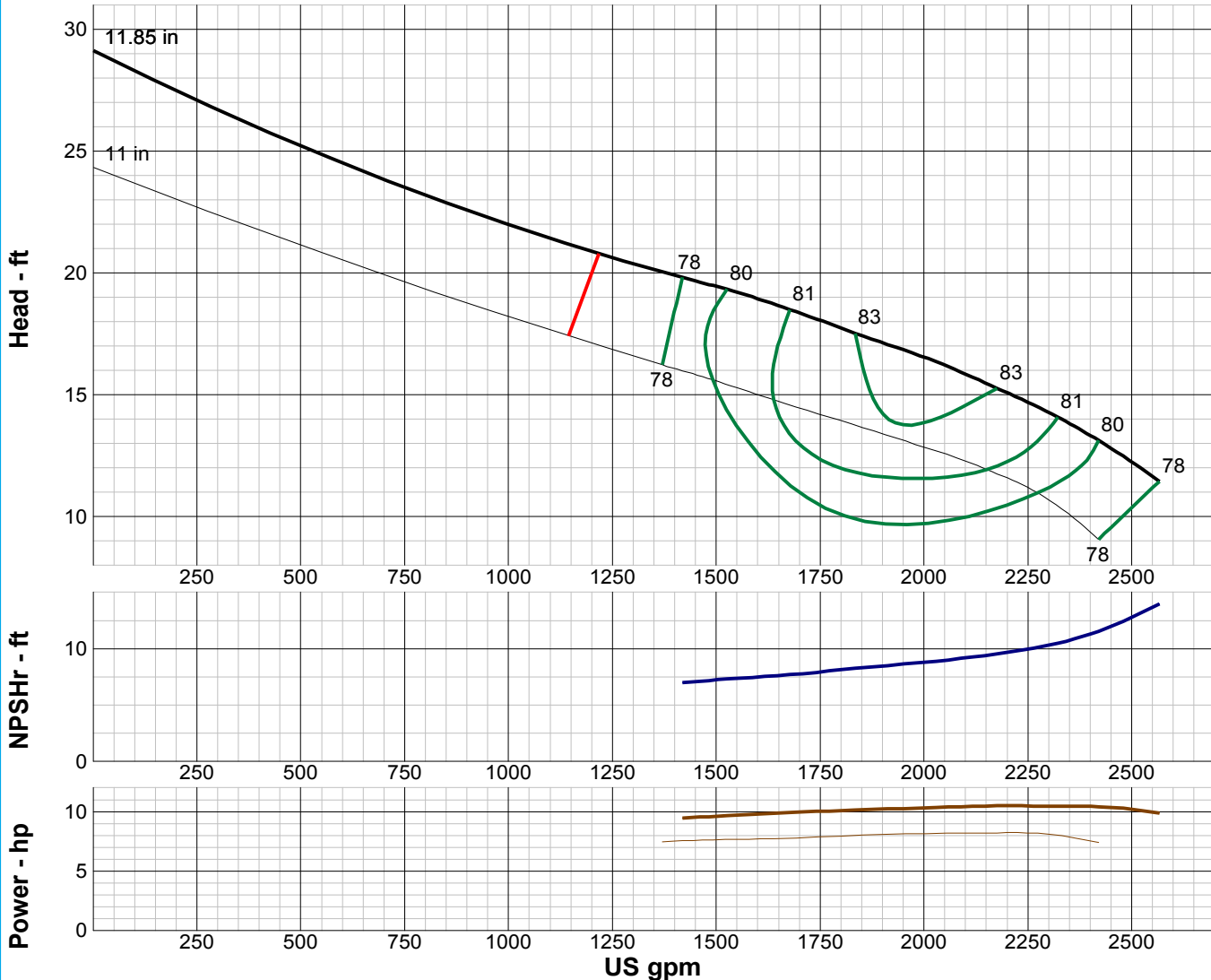
TURBINE PUMP CURVE

SINGLE STAGE PERFORMANCE

JANUARY 2010

480 SERIES

15KC 870 RPM



IMPELLER DATA

IMPELLER NUMBER	0004	Minimum submergence above eye of bottom impeller: 36 IN.
TYPE	ENCLOSED	
THRUST FACTOR	K=28.00	
EYE AREA	63.6 SQ. IN.	
WEIGHT	30.00 LB.	

FLANGED BOWL DATA

BOWL NUMBER	0001
BOWL MAX. DIAMETER	15.250 IN.
BOWL MIN. DIAMETER	14.750 IN.
MAX. NO. STAGES	14
ONE STAGE WEIGHT	510 LB.
ADD STAGE WEIGHT	195 LB.
STD. SHAFT DIA.	1.938 IN.
STD. LATERAL	0.688 IN.
DISCHARGE SIZE	10 - 12 IN.
DISCHARGE CONNECTION	THD - FLG
SUCTION SIZE	10 - 12 IN.
SUCTION CONNECTION	THD
MAX. SPHERE SIZE	2.250 IN.
MAX. OPERATIONAL P.S.I.	540 (SPECIAL)

EFFICIENCY CORRECTION

NUMBER OF BOWLS:	1	2	3	4
CHANGE AS FOLLOWS:	-3	-2	-1	0
CHANGE IN EFFICIENCY MAY AFFECT BOTH HEAD AND HORSEPOWER.				

PUMP MATERIAL EFFICIENCY CORRECTION

	DUCTILE	BRONZE	NI-R	STAINLESS
IMPELLER MATERIAL:	-2	0	-1	-1
BOWL MATERIAL:	-2	-1	-2	-2

Performance based on pumping clear, fresh water at a temperature not over 85° F., free of gas, air or abrasives and with bowls properly adjusted and submerged. Performance curve reflects Hydraulic Institute tolerances and guidelines.



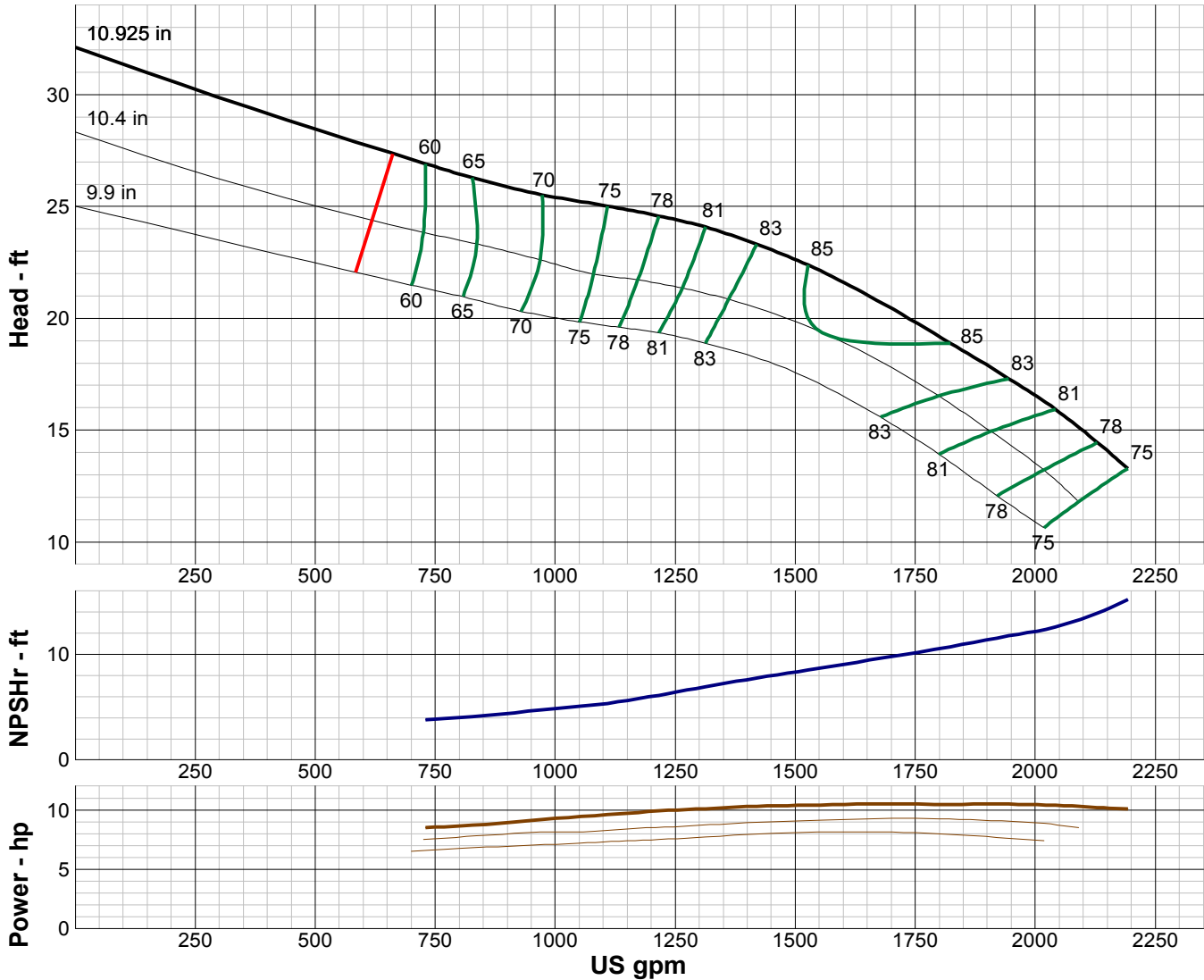
TURBINE PUMP CURVE

SINGLE STAGE PERFORMANCE

JANUARY 2010

480 SERIES

16LC 870 RPM



IMPELLER DATA			
IMPELLER NUMBER	0312		
TYPE	ENCLOSED		
THRUST FACTOR	K=20.00		
EYE AREA	51.3 SQ. IN.		
WEIGHT	32.30 LB.		
		Minimum submergence above eye of bottom impeller: 32 IN.	

EFFICIENCY CORRECTION				
NUMBER OF BOWLS:	1	2	3	
CHANGE AS FOLLOWS:	-2	-1	0	
CHANGE IN EFFICIENCY MAY AFFECT BOTH HEAD AND HORSEPOWER.				

PUMP MATERIAL EFFICIENCY CORRECTION				
	DUCTILE	BRONZE	NI-R	STAINLESS
IMPELLER MATERIAL:	-2	0	-1	-1
BOWL MATERIAL:	-2	-1	-2	-2

FLANGED BOWL DATA	
BOWL NUMBER	0310
BOWL MAX. DIAMETER	15.375 IN.
BOWL MIN. DIAMETER	15.375 IN.
MAX. NO. STAGES	14
ONE STAGE WEIGHT	630 LB.
ADD STAGE WEIGHT	260 LB.
STD. SHAFT DIA.	2.250 IN.
STD. LATERAL	0.563 IN.
DISCHARGE SIZE	N/A
DISCHARGE CONNECTION	FLG
SUCTION BELL DIA.	16.750 IN.
SUCTION CONNECTION	BELL
MAX. SPHERE SIZE	1.375 IN.
MAX. OPERATIONAL P.S.I.	300 (SPECIAL)

Performance based on pumping clear, fresh water at a temperature not over 85° F., free of gas, air or abrasives and with bowls properly adjusted and submerged. Performance curve reflects Hydraulic Institute tolerances and guidelines.



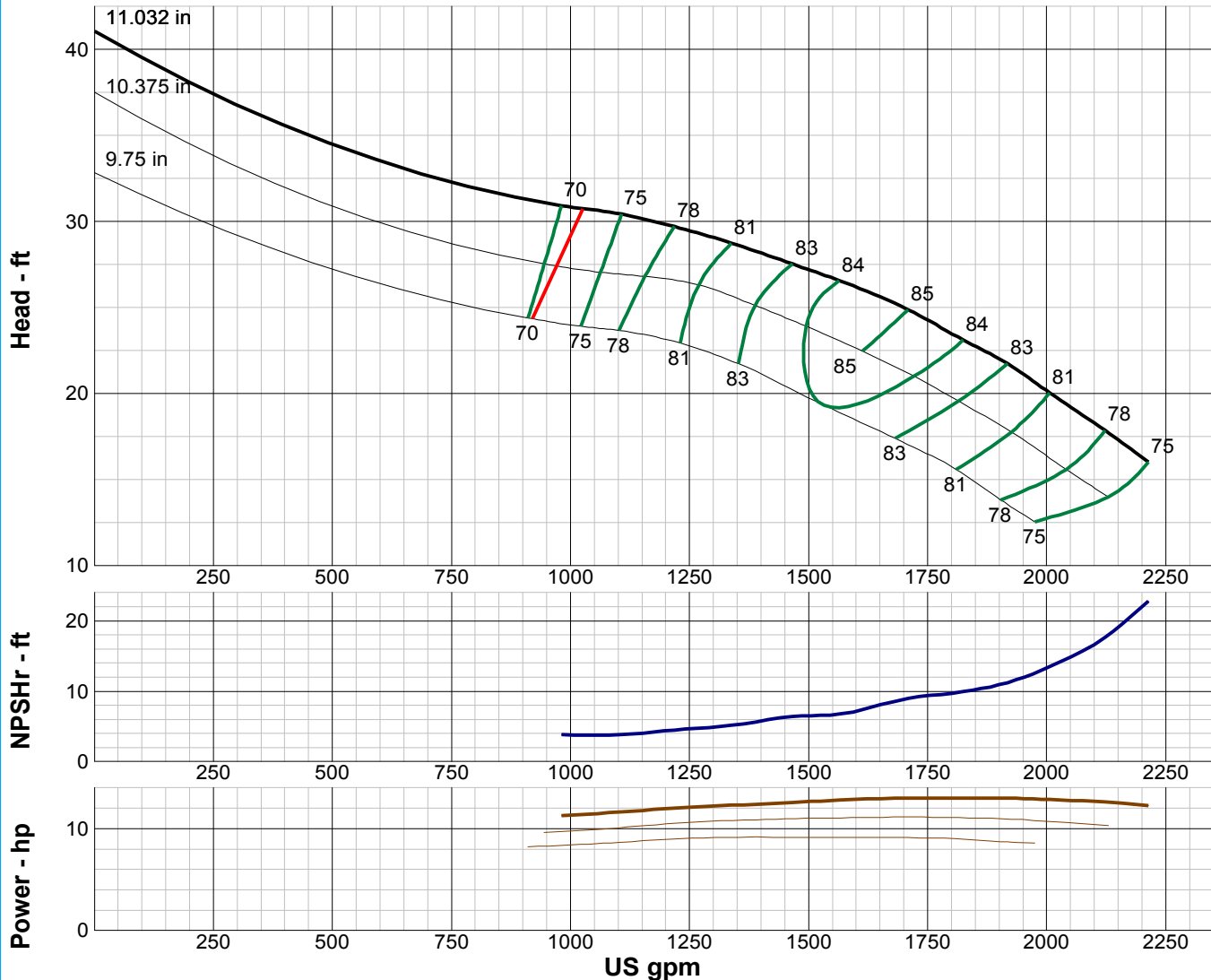
TURBINE PUMP CURVE

SINGLE STAGE PERFORMANCE

JANUARY 2010

480 SERIES

16MC 870 RPM



IMPELLER DATA		
IMPELLER NUMBER	0308	Minimum submergence above eye of bottom impeller: 36 IN.
TYPE	ENCLOSED	
THRUST FACTOR	K=23.00	
EYE AREA	58.4 SQ. IN.	
WEIGHT	42.00 LB.	

EFFICIENCY CORRECTION					
NUMBER OF BOWLS:	1	2	3		
CHANGE AS FOLLOWS:	-2	-1	0		
CHANGE IN EFFICIENCY MAY AFFECT BOTH HEAD AND HORSEPOWER.					

PUMP MATERIAL EFFICIENCY CORRECTION				
	DUCTILE	BRONZE	NI-R	STAINLESS
IMPELLER MATERIAL:	-2	0	-1	-1
BOWL MATERIAL:	-2	-1	-2	-2

FLANGED BOWL DATA	
BOWL NUMBER	0306
BOWL MAX. DIAMETER	16.000 IN.
BOWL MIN. DIAMETER	16.000 IN.
MAX. NO. STAGES	14
ONE STAGE WEIGHT	630 LB.
ADD STAGE WEIGHT	260 LB.
STD. SHAFT DIA.	2.250 IN.
STD. LATERAL	0.750 IN.
DISCHARGE SIZE	N/A
DISCHARGE CONNECTION	FLG
SUCTION BELL DIA.	17.375 IN.
SUCTION CONNECTION	BELL
MAX. SPHERE SIZE	1.688 IN.
MAX. OPERATIONAL P.S.I.	300 (SPECIAL)

Performance based on pumping clear, fresh water at a temperature not over 85° F., free of gas, air or abrasives and with bowls properly adjusted and submerged. Performance curve reflects Hydraulic Institute tolerances and guidelines.



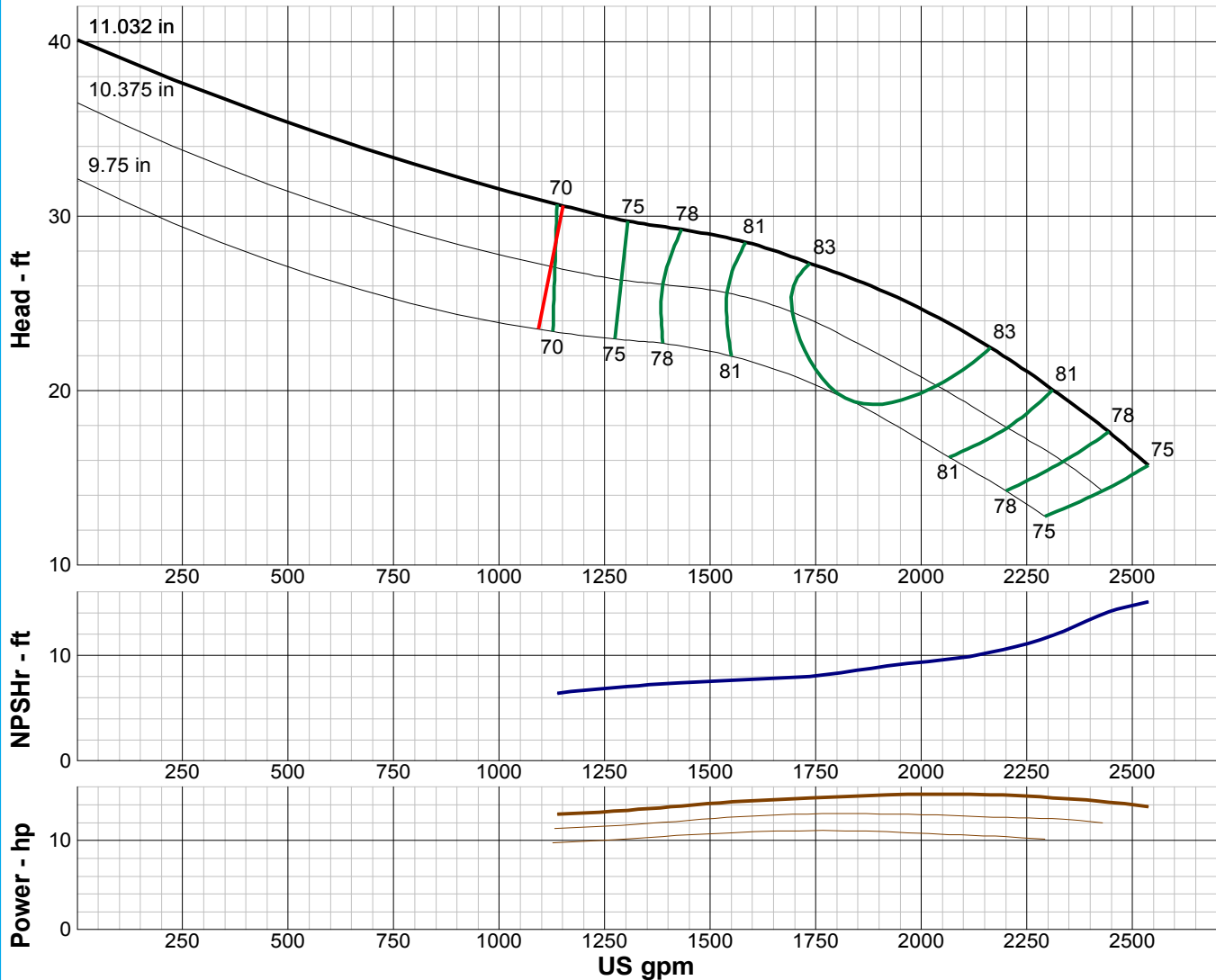
TURBINE PUMP CURVE

SINGLE STAGE PERFORMANCE

JANUARY 2010

480 SERIES

16HC 870 RPM



IMPELLER DATA		
IMPELLER NUMBER	0309	Minimum submergence above eye of bottom impeller: 36 IN.
TYPE	ENCLOSED	
THRUST FACTOR	K=23.00	
EYE AREA	58.4 SQ. IN.	
WEIGHT	52.00 LB.	

EFFICIENCY CORRECTION				
NUMBER OF BOWLS:	1	2	3	
CHANGE AS FOLLOWS:	-2	-0.5	0	
CHANGE IN EFFICIENCY MAY AFFECT BOTH HEAD AND HORSEPOWER.				

PUMP MATERIAL EFFICIENCY CORRECTION				
	DUCTILE	BRONZE	NI-R	STAINLESS
IMPELLER MATERIAL:	-2	0	-1	-1
BOWL MATERIAL:	-2	-1	-2	-2

FLANGED BOWL DATA	
BOWL NUMBER	0306
BOWL MAX. DIAMETER	16.000 IN.
BOWL MIN. DIAMETER	16.000 IN.
MAX. NO. STAGES	12
ONE STAGE WEIGHT	630 LB.
ADD STAGE WEIGHT	260 LB.
STD. SHAFT DIA.	2.250 IN.
STD. LATERAL	0.750 IN.
DISCHARGE SIZE	N/A
DISCHARGE CONNECTION	FLG
SUCTION BELL DIA.	17.375 IN.
SUCTION CONNECTION	BELL
MAX. SPHERE SIZE	1.688 IN.
MAX. OPERATIONAL P.S.I.	300 (SPECIAL)

Performance based on pumping clear, fresh water at a temperature not over 85° F., free of gas, air or abrasives and with bowls properly adjusted and submerged. Performance curve reflects Hydraulic Institute tolerances and guidelines.



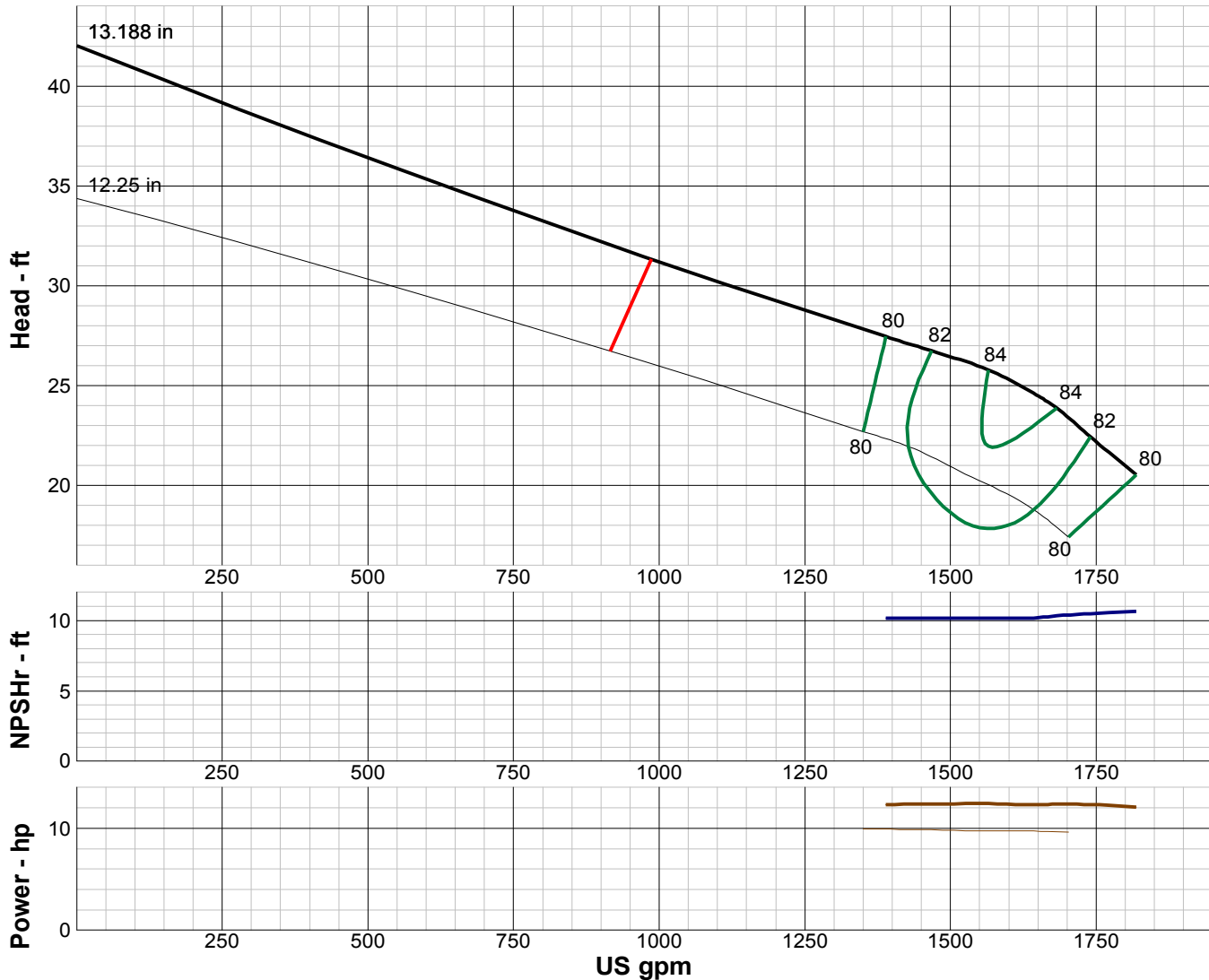
TURBINE PUMP CURVE

SINGLE STAGE PERFORMANCE

JANUARY 2010

480 SERIES

18LC 870 RPM



IMPELLER DATA

IMPELLER NUMBER	3914	Minimum submergence above eye of bottom impeller: 48 IN.
TYPE	ENCLOSED	
THRUST FACTOR	K=21.75	
EYE AREA	46.0 SQ. IN.	
WEIGHT	42.00 LB.	

EFFICIENCY CORRECTION

NUMBER OF BOWLS:	1	2	3		
CHANGE AS FOLLOWS:	-2	-1	0		
CHANGE IN EFFICIENCY MAY AFFECT BOTH HEAD AND HORSEPOWER.					

PUMP MATERIAL EFFICIENCY CORRECTION

	DUCTILE	BRONZE	NI-R	STAINLESS
IMPELLER MATERIAL:	-2	0	-1	-1
BOWL MATERIAL:	-2	-1	-2	-2

FLANGED BOWL DATA

BOWL NUMBER	3905
BOWL MAX. DIAMETER	17.750 IN.
BOWL MIN. DIAMETER	17.500 IN.
MAX. NO. STAGES	12
ONE STAGE WEIGHT	750 LB.
ADD STAGE WEIGHT	325 LB.
STD. SHAFT DIA.	2.188 IN.
STD. LATERAL	0.500 IN.
DISCHARGE SIZE	N/A
DISCHARGE CONNECTION	FLG
SUCTION BELL SIZE	18.000 IN.
SUCTION CONNECTION	BELL
MAX. SPHERE SIZE	1.250 IN.
MAX. OPERATIONAL P.S.I.	450 (SPECIAL)

Performance based on pumping clear, fresh water at a temperature not over 85° F., free of gas, air or abrasives and with bowls properly adjusted and submerged. Performance curve reflects Hydraulic Institute tolerances and guidelines.



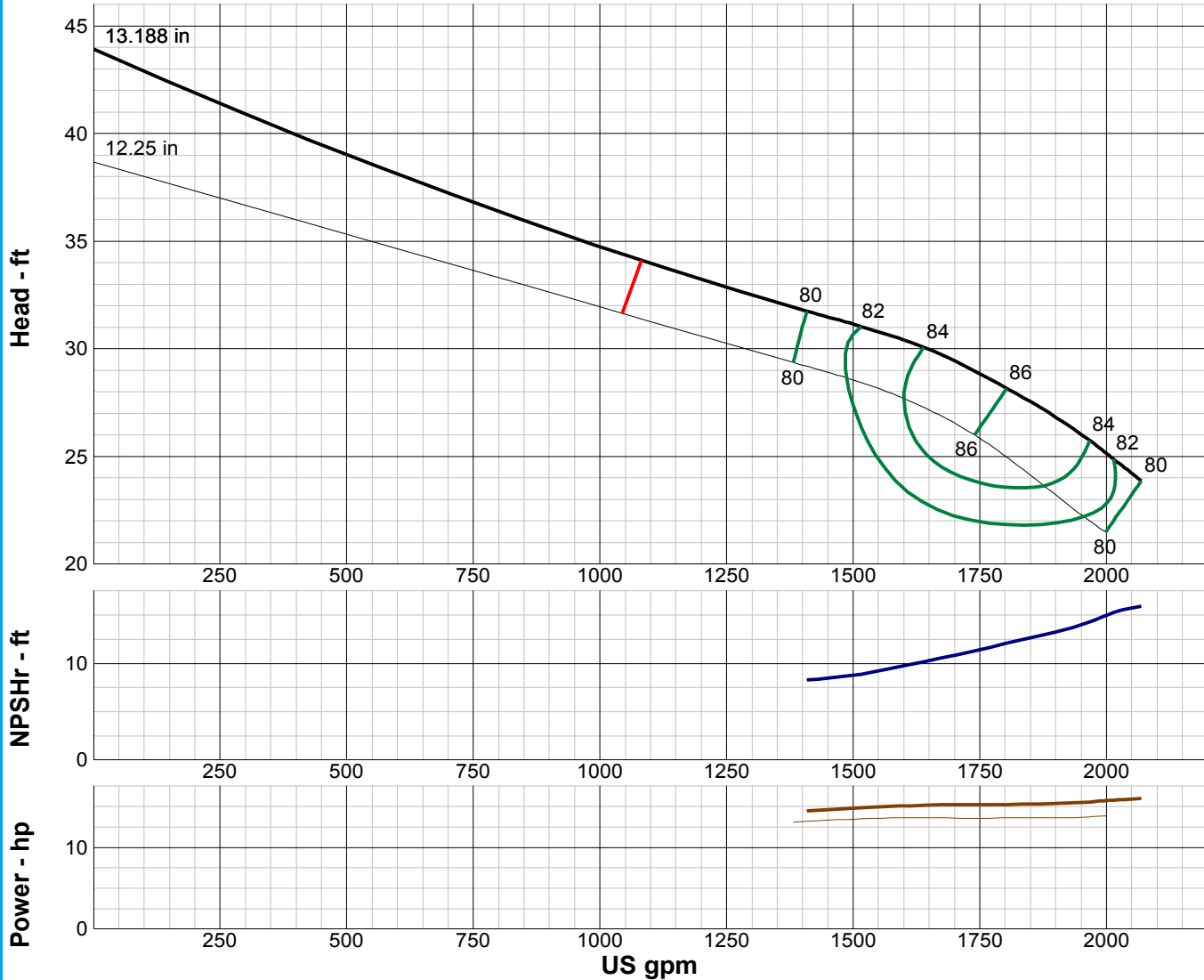
TURBINE PUMP CURVE

SINGLE STAGE PERFORMANCE

JANUARY 2010

480 SERIES

18MC 870 RPM



IMPELLER DATA

IMPELLER NUMBER	3923	Minimum submergence above eye of bottom impeller: 48 IN.
TYPE	ENCLOSED	
THRUST FACTOR	K=21.75	
EYE AREA	50.3 SQ. IN.	
WEIGHT	42.00 LB.	

EFFICIENCY CORRECTION

NUMBER OF BOWLS:	1	2	3		
CHANGE AS FOLLOWS:	-2	-1	0		
CHANGE IN EFFICIENCY MAY AFFECT BOTH HEAD AND HORSEPOWER.					

PUMP MATERIAL EFFICIENCY CORRECTION

	DUCTILE	BRONZE	NI-R	STAINLESS
IMPELLER MATERIAL:	-2	0	-1	-1
BOWL MATERIAL:	-2	-1	-2	-2

FLANGED BOWL DATA

BOWL NUMBER	3905
BOWL MAX. DIAMETER	17.750 IN.
BOWL MIN. DIAMETER	17.500 IN.
MAX. NO. STAGES	10
ONE STAGE WEIGHT	750 LB.
ADD STAGE WEIGHT	325 LB.
STD. SHAFT DIA.	2.188 IN.
STD. LATERAL	0.500 IN.
DISCHARGE SIZE	N/A
DISCHARGE CONNECTION	FLG
SUCTION BELL DIA.	18.000 IN.
SUCTION CONNECTION	BELL
MAX. SPHERE SIZE	1.250 IN.
MAX. OPERATIONAL P.S.I.	450 (SPECIAL)

Performance based on pumping clear, fresh water at a temperature not over 85° F., free of gas, air or abrasives and with bowls properly adjusted and submerged. Performance curve reflects Hydraulic Institute tolerances and guidelines.



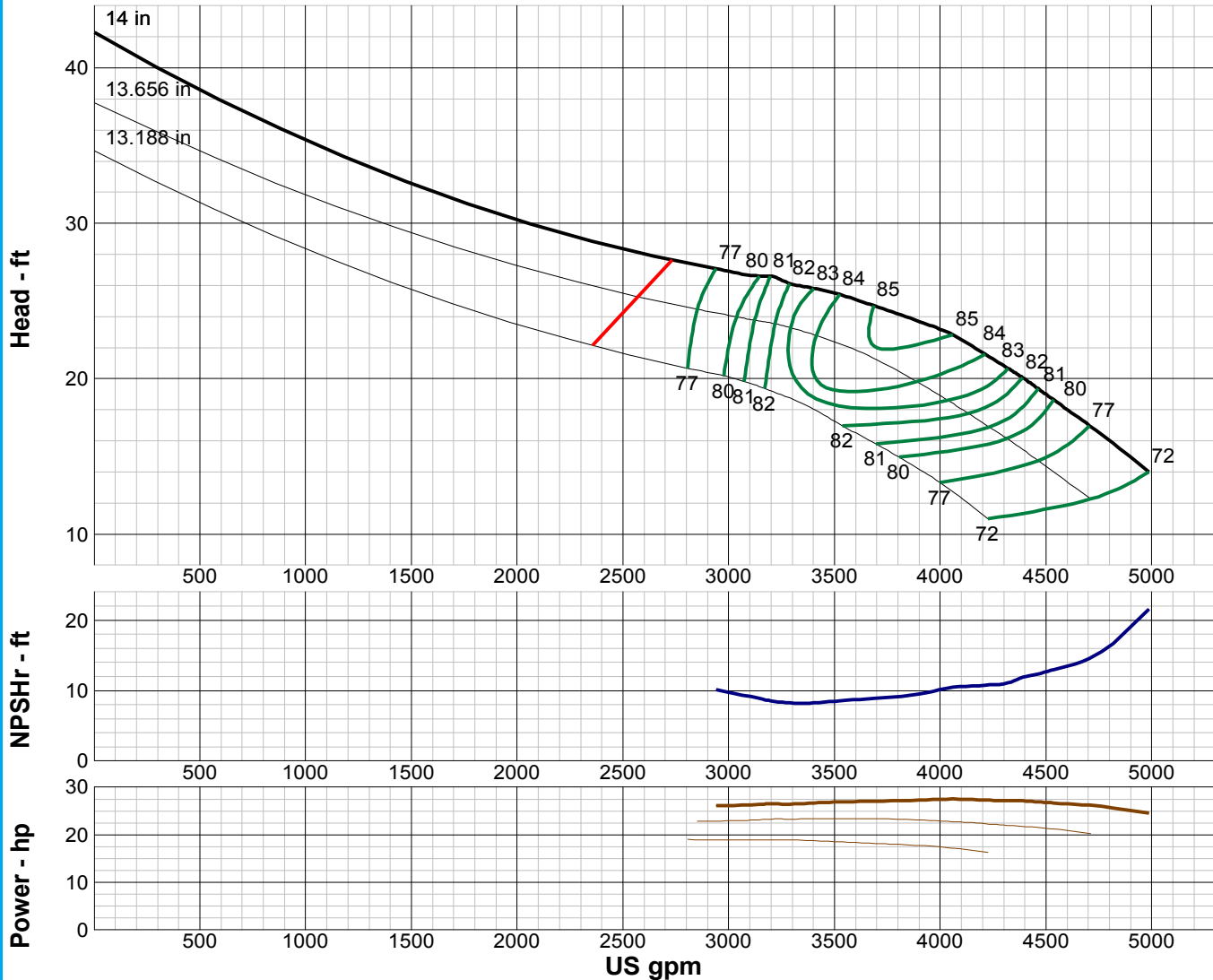
TURBINE PUMP CURVE

SINGLE STAGE PERFORMANCE

JANUARY 2010

480 SERIES

18HHC 870 RPM



IMPELLER DATA		
IMPELLER NUMBER	0777	Minimum submergence above eye of bottom impeller: 48 IN.
TYPE	ENCLOSED	
THRUST FACTOR	K=32.00	
EYE AREA	102 SQ. IN.	
WEIGHT	49.00 LB.	

FLANGED BOWL DATA	
BOWL NUMBER	0224
BOWL MAX. DIAMETER	18.625 IN.
BOWL MIN. DIAMETER	18.250 IN.
MAX. NO. STAGES	10
ONE STAGE WEIGHT	LB.
ADD STAGE WEIGHT	LB.
STD. SHAFT DIA.	2.188 IN.
STD. LATERAL	0.750 IN.
DISCHARGE SIZE	N/A
DISCHARGE CONNECTION	FLG
SUCTION BELL DIA.	18.813 IN.
SUCTION CONNECTION	BELL
MAX. SPHERE SIZE	1.250 IN.
MAX. OPERATIONAL P.S.I.	450 (SPECIAL)

EFFICIENCY CORRECTION				
NUMBER OF BOWLS:	1	2		
CHANGE AS FOLLOWS:	-0.5	0		
CHANGE IN EFFICIENCY MAY AFFECT BOTH HEAD AND HORSEPOWER.				

PUMP MATERIAL EFFICIENCY CORRECTION				
	DUCTILE	BRONZE	NI-R	STAINLESS
IMPELLER MATERIAL:	-2	0	-2	-2
BOWL MATERIAL:	-2	-1	-2	-2

Performance based on pumping clear, fresh water at a temperature not over 85° F., free of gas, air or abrasives and with bowls properly adjusted and submerged. Performance curve reflects Hydraulic Institute tolerances and guidelines.



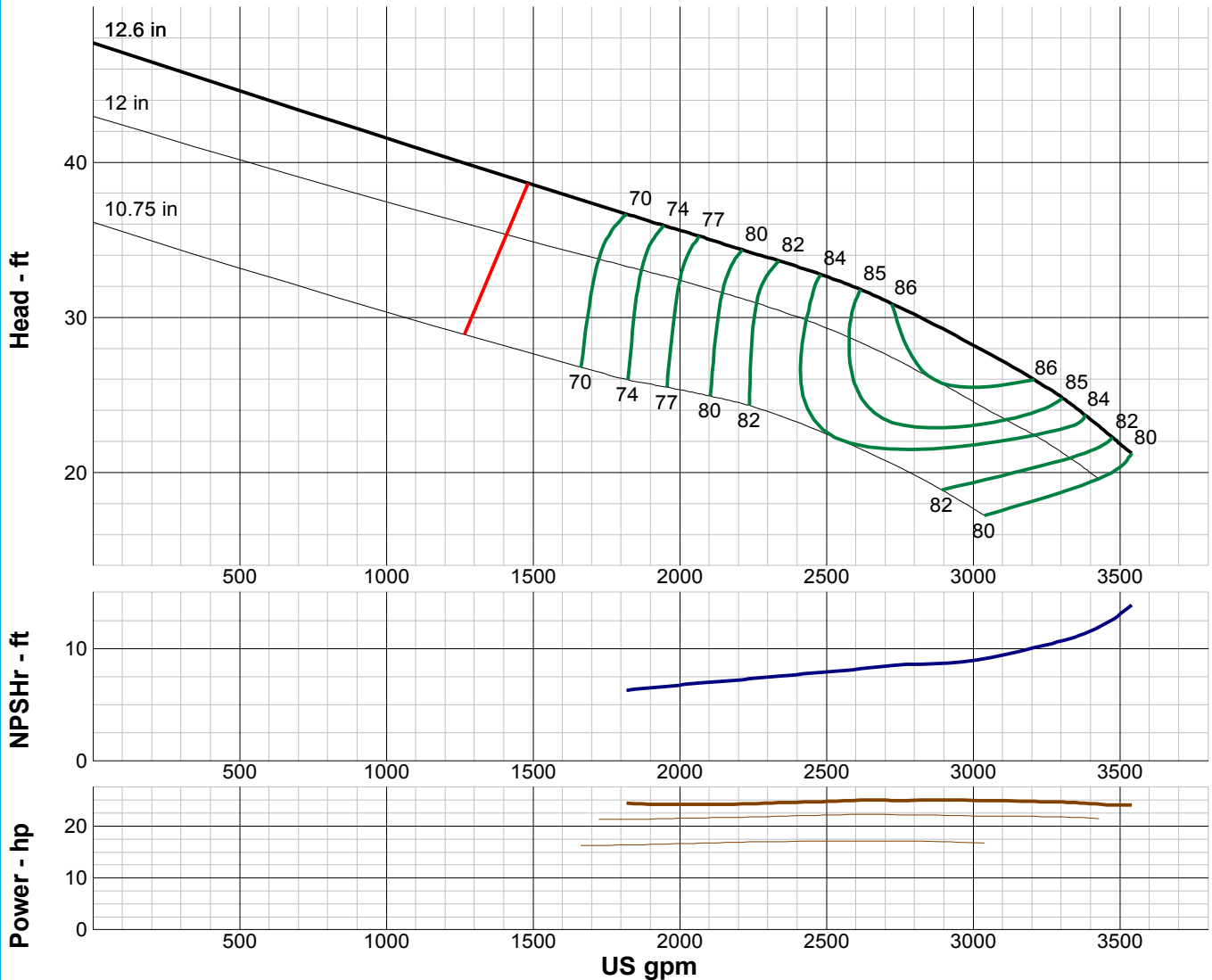
TURBINE PUMP CURVE

SINGLE STAGE PERFORMANCE

JANUARY 2010

480 SERIES

19MC 870 RPM



IMPELLER DATA		
IMPELLER NUMBER	0353	Minimum submergence above eye of bottom impeller: 42 IN.
TYPE	ENCLOSED	
THRUST FACTOR	K=32.00	
EYE AREA	74.5 SQ. IN.	
WEIGHT	54.00 LB.	

EFFICIENCY CORRECTION				
NUMBER OF BOWLS:	1	2		
CHANGE AS FOLLOWS:	-1	0		
CHANGE IN EFFICIENCY MAY AFFECT BOTH HEAD AND HORSEPOWER.				

PUMP MATERIAL EFFICIENCY CORRECTION				
	DUCTILE	BRONZE	NI-R	STAINLESS
IMPELLER MATERIAL:	-2	0	-2	-2
BOWL MATERIAL:	-2	-2	-2	-2

FLANGED BOWL DATA	
BOWL NUMBER	0358
BOWL MAX. DIAMETER	18.625 IN.
BOWL MIN. DIAMETER	18.625 IN.
MAX. NO. STAGES	10
ONE STAGE WEIGHT	770 LB.
ADD STAGE WEIGHT	447 LB.
STD. SHAFT DIA.	2.250 IN.
STD. LATERAL	0.750 IN.
DISCHARGE SIZE	N/A
DISCHARGE CONNECTION	FLG
SUCTION BELL DIA.	21.000 IN.
SUCTION CONNECTION	BELL
MAX. SPHERE SIZE	1.000 IN.
MAX. OPERATIONAL P.S.I.	350 (SPECIAL)

Performance based on pumping clear, fresh water at a temperature not over 85° F., free of gas, air or abrasives and with bowls properly adjusted and submerged. Performance curve reflects Hydraulic Institute tolerances and guidelines.



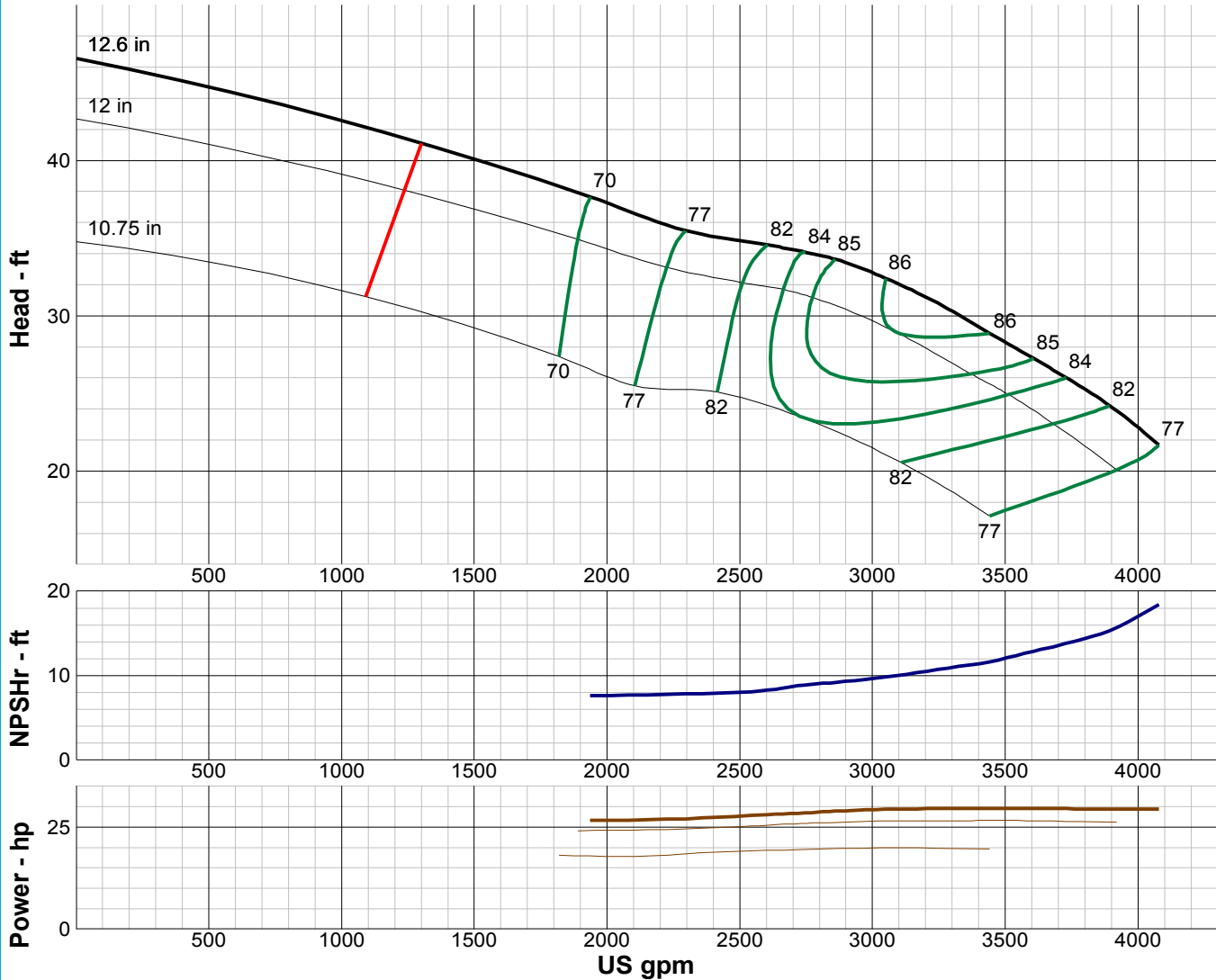
TURBINE PUMP CURVE

SINGLE STAGE PERFORMANCE

JANUARY 2010

480 SERIES

19HC 870 RPM



IMPELLER DATA

IMPELLER NUMBER	0357	Minimum submergence above eye of bottom impeller: 42 IN.
TYPE	ENCLOSED	
THRUST FACTOR	K=32.00	
EYE AREA	74.5 SQ. IN.	
WEIGHT	54.00 LB.	

EFFICIENCY CORRECTION

NUMBER OF BOWLS:	1	2			
CHANGE AS FOLLOWS:	-1	0			
CHANGE IN EFFICIENCY MAY AFFECT BOTH HEAD AND HORSEPOWER.					

PUMP MATERIAL EFFICIENCY CORRECTION

	DUCTILE	BRONZE	NI-R	STAINLESS
IMPELLER MATERIAL:	-2	0	-2	-2
BOWL MATERIAL:	-2	-2	-2	-2

FLANGED BOWL DATA

BOWL NUMBER	0358
BOWL MAX. DIAMETER	18.625 IN.
BOWL MIN. DIAMETER	18.625 IN.
MAX. NO. STAGES	10
ONE STAGE WEIGHT	770 LB.
ADD STAGE WEIGHT	447 LB.
STD. SHAFT DIA.	2.250 IN.
STD. LATERAL	0.750 IN.
DISCHARGE SIZE	N/A
DISCHARGE CONNECTION	FLG
SUCTION BELL DIA.	21.000 IN.
SUCTION CONNECTION	BELL
MAX. SPHERE SIZE	1.000 IN.
MAX. OPERATIONAL P.S.I.	350 (SPECIAL)

Performance based on pumping clear, fresh water at a temperature not over 85° F., free of gas, air or abrasives and with bowls properly adjusted and submerged. Performance curve reflects Hydraulic Institute tolerances and guidelines.



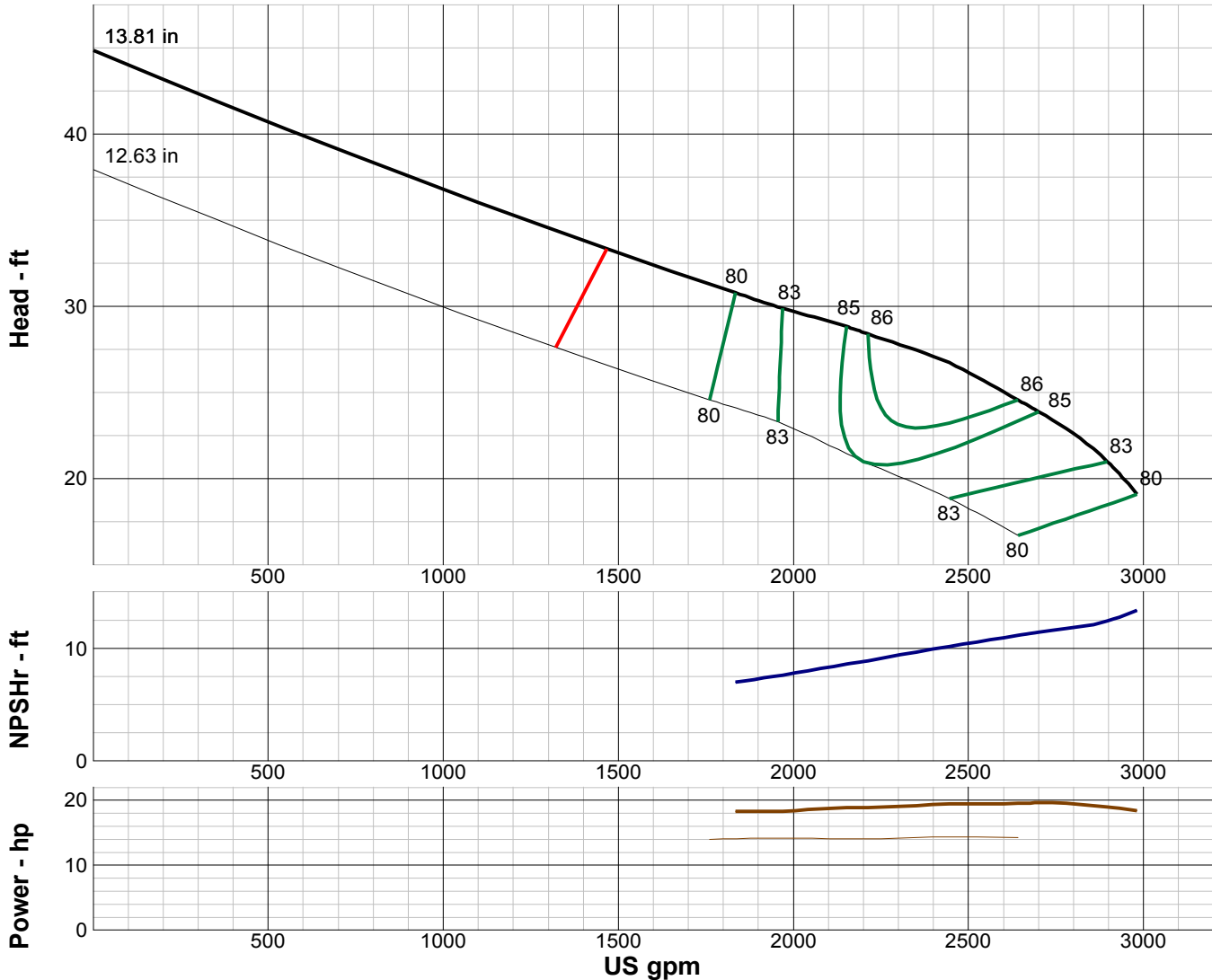
TURBINE PUMP CURVE

SINGLE STAGE PERFORMANCE

JANUARY 2010

480 SERIES

20LC 870 RPM



IMPELLER DATA		
IMPELLER NUMBER	4838	Minimum submergence above eye of bottom impeller: 33 IN.
TYPE	ENCLOSED	
THRUST FACTOR	K=29.40	
EYE AREA	72.6 SQ. IN.	
WEIGHT	69.00 LB.	

FLANGED BOWL DATA	
BOWL NUMBER	3969
BOWL MAX. DIAMETER	19.875 IN.
BOWL MIN. DIAMETER	19.250 IN.
MAX. NO. STAGES	13
ONE STAGE WEIGHT	790 LB.
ADD STAGE WEIGHT	569 LB.
STD. SHAFT DIA.	2.438 IN.
STD. LATERAL	0.750 IN.
DISCHARGE SIZE	N/A
DISCHARGE CONNECTION	FLG
SUCTION BELL DIA.	20.875 IN.
SUCTION CONNECTION	BELL
MAX. SPHERE SIZE	2.000 IN.
MAX. OPERATIONAL P.S.I.	350 (SPECIAL)

EFFICIENCY CORRECTION				
NUMBER OF BOWLS:	1	2		
CHANGE AS FOLLOWS:	-2	0		
CHANGE IN EFFICIENCY MAY AFFECT BOTH HEAD AND HORSEPOWER.				

PUMP MATERIAL EFFICIENCY CORRECTION				
	DUCTILE	BRONZE	NI-R	STAINLESS
IMPELLER MATERIAL:	-1	0	-1	-1
BOWL MATERIAL:	-1	-2	-2	-2

Performance based on pumping clear, fresh water at a temperature not over 85° F., free of gas, air or abrasives and with bowls properly adjusted and submerged. Performance curve reflects Hydraulic Institute tolerances and guidelines.



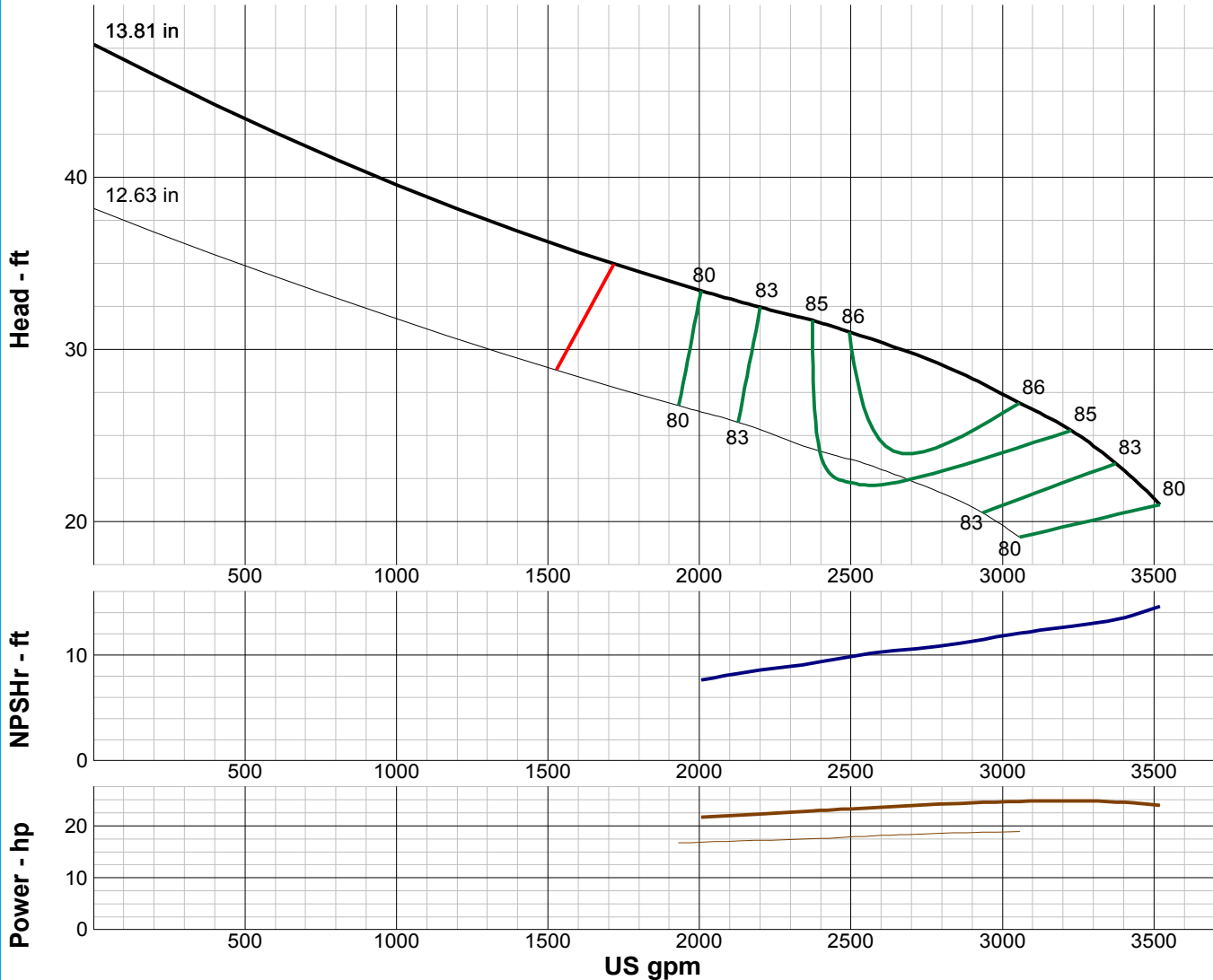
TURBINE PUMP CURVE

SINGLE STAGE PERFORMANCE

JANUARY 2010

480 SERIES

20MC 870 RPM



IMPELLER DATA		
IMPELLER NUMBER	4847	Minimum submergence above eye of bottom impeller: 33 IN.
TYPE	ENCLOSED	
THRUST FACTOR	K=29.40	
EYE AREA	72.6 SQ. IN.	
WEIGHT	69.00 LB.	

EFFICIENCY CORRECTION				
NUMBER OF BOWLS:	1	2		
CHANGE AS FOLLOWS:	-2	0		
CHANGE IN EFFICIENCY MAY AFFECT BOTH HEAD AND HORSEPOWER.				

PUMP MATERIAL EFFICIENCY CORRECTION				
	DUCTILE	BRONZE	NI-R	STAINLESS
IMPELLER MATERIAL:	-1	0	-1	-1
BOWL MATERIAL:	-1	-2	-2	-2

FLANGED BOWL DATA	
BOWL NUMBER	3969
BOWL MAX. DIAMETER	19.875 IN.
BOWL MIN. DIAMETER	19.250 IN.
MAX. NO. STAGES	10
ONE STAGE WEIGHT	790 LB.
ADD STAGE WEIGHT	569 LB.
STD. SHAFT DIA.	2.438 IN.
STD. LATERAL	0.750 IN.
DISCHARGE SIZE	N/A
DISCHARGE CONNECTION	FLG
SUCTION BELL DIA.	20.875 IN.
SUCTION CONNECTION	BELL
MAX. SPHERE SIZE	2.000 IN.
MAX. OPERATIONAL P.S.I.	350 (SPECIAL)

Performance based on pumping clear, fresh water at a temperature not over 85° F., free of gas, air or abrasives and with bowls properly adjusted and submerged. Performance curve reflects Hydraulic Institute tolerances and guidelines.



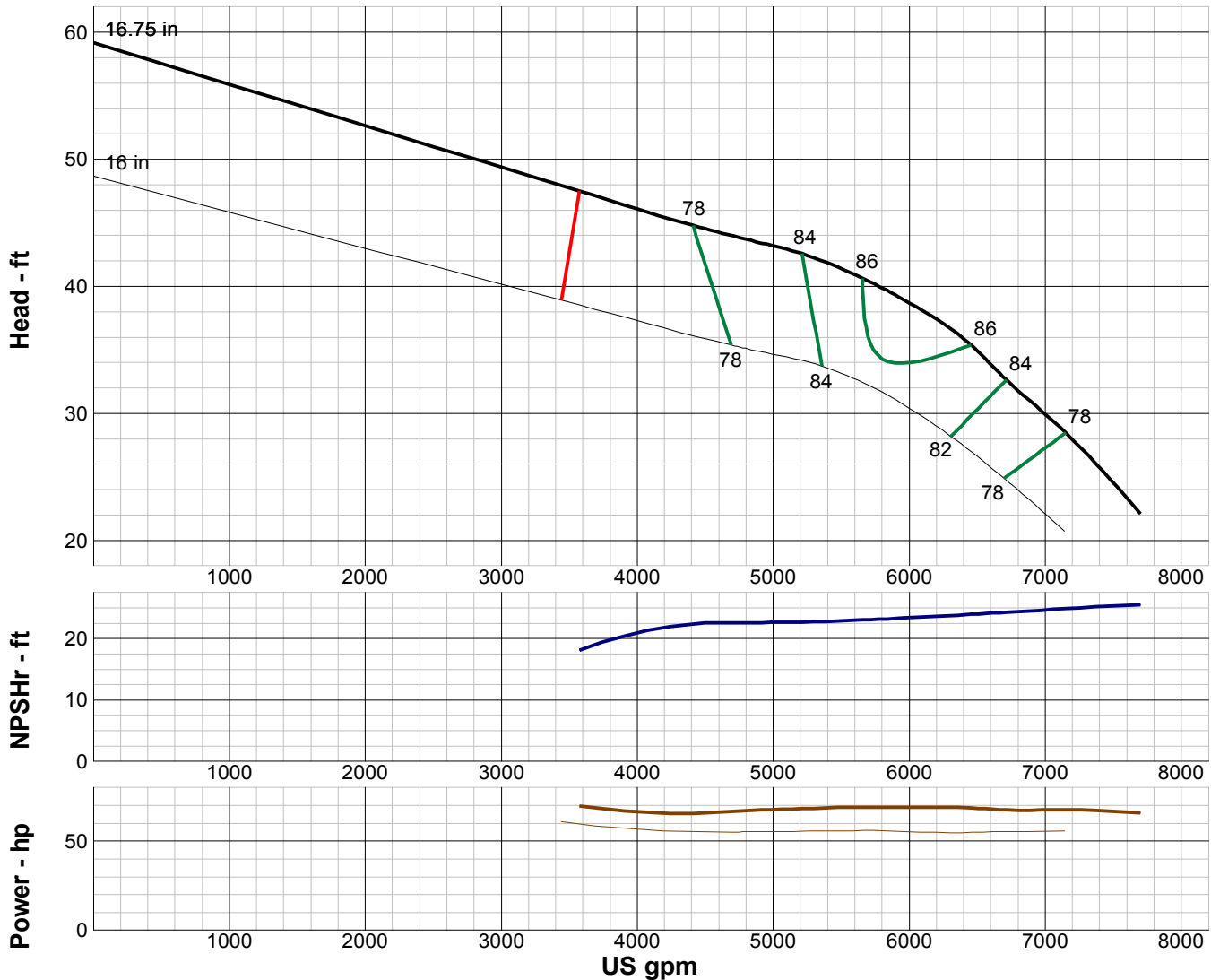
TURBINE PUMP CURVE

SINGLE STAGE PERFORMANCE

JANUARY 2010

480 SERIES

20HC 870 RPM



IMPELLER DATA

IMPELLER NUMBER	3987	Minimum submergence above eye of bottom impeller: 32 IN.
TYPE	ENCLOSED	
THRUST FACTOR	K=58.0	
EYE AREA	113 SQ. IN.	
WEIGHT	94.00 LB.	

FLANGED BOWL DATA

BOWL NUMBER	3996
BOWL MAX. DIAMETER	20.000 IN.
BOWL MIN. DIAMETER	19.750 IN.
MAX. NO. STAGES	4
ONE STAGE WEIGHT	845 LB.
ADD STAGE WEIGHT	560 LB.
STD. SHAFT DIA.	2.438 IN.
STD. LATERAL	0.625 IN.
DISCHARGE SIZE	N/A
DISCHARGE CONNECTION	FLG.
SUCTION BELL DIA.	23.313 IN.
SUCTION CONNECTION	BELL
MAX. SPHERE SIZE	2.000 IN.
MAX. OPERATIONAL P.S.I.	350 (SPECIAL)

EFFICIENCY CORRECTION

NUMBER OF BOWLS:	1	2	3	4
CHANGE AS FOLLOWS:	-2	-1	0	+1
CHANGE IN EFFICIENCY MAY AFFECT BOTH HEAD AND HORSEPOWER.				

PUMP MATERIAL EFFICIENCY CORRECTION

	DUCTILE	BRONZE	NI-R	STAINLESS
IMPELLER MATERIAL:	-1	0	-1	-1
BOWL MATERIAL:	-1	-2	-2	-2

Performance based on pumping clear, fresh water at a temperature not over 85° F., free of gas, air or abrasives and with bowls properly adjusted and submerged. Performance curve reflects Hydraulic Institute tolerances and guidelines.



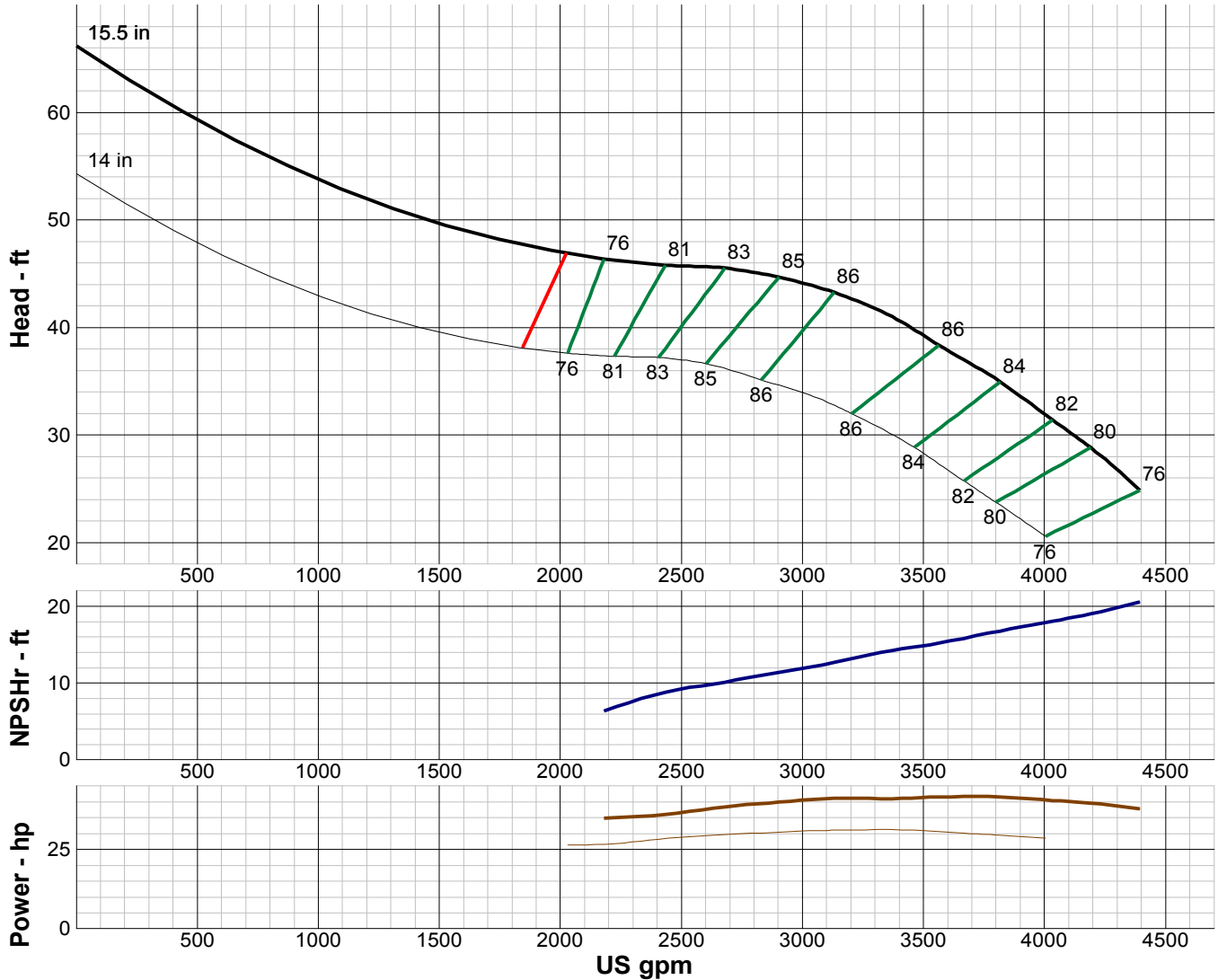
TURBINE PUMP CURVE

SINGLE STAGE PERFORMANCE

JANUARY 2010

480 SERIES

22EC 870 RPM



IMPELLER DATA		
IMPELLER NUMBER	4856	Minimum submergence above eye of bottom impeller: 32 IN.
TYPE	ENCLOSED	
THRUST FACTOR	K=26.80	
EYE AREA	78.5 SQ. IN.	
WEIGHT	LB.	

EFFICIENCY CORRECTION					
NUMBER OF BOWLS:	1	2	3	4	
CHANGE AS FOLLOWS:	-3	-2	-1	0	
CHANGE IN EFFICIENCY MAY AFFECT BOTH HEAD AND HORSEPOWER.					

PUMP MATERIAL EFFICIENCY CORRECTION				
	DUCTILE	BRONZE	NI-R	STAINLESS
IMPELLER MATERIAL:	-1	0	-1	-1
BOWL MATERIAL:	-1	-2	-2	-2

FLANGED BOWL DATA	
BOWL NUMBER	5310
BOWL MAX. DIAMETER	20.875 IN.
BOWL MIN. DIAMETER	20.625 IN.
MAX. NO. STAGES	6
ONE STAGE WEIGHT	LB.
ADD STAGE WEIGHT	LB.
STD. SHAFT DIA.	2.438 IN.
STD. LATERAL	0.688 IN.
DISCHARGE SIZE	N/A
DISCHARGE CONNECTION	FLG.
SUCTION BELL DIA.	20.625 IN.
SUCTION CONNECTION	BELL
MAX. SPHERE SIZE	1.000 IN.
MAX. OPERATIONAL P.S.I.	300 (SPECIAL)

Performance based on pumping clear, fresh water at a temperature not over 85° F., free of gas, air or abrasives and with bowls properly adjusted and submerged. Performance curve reflects Hydraulic Institute tolerances and guidelines.



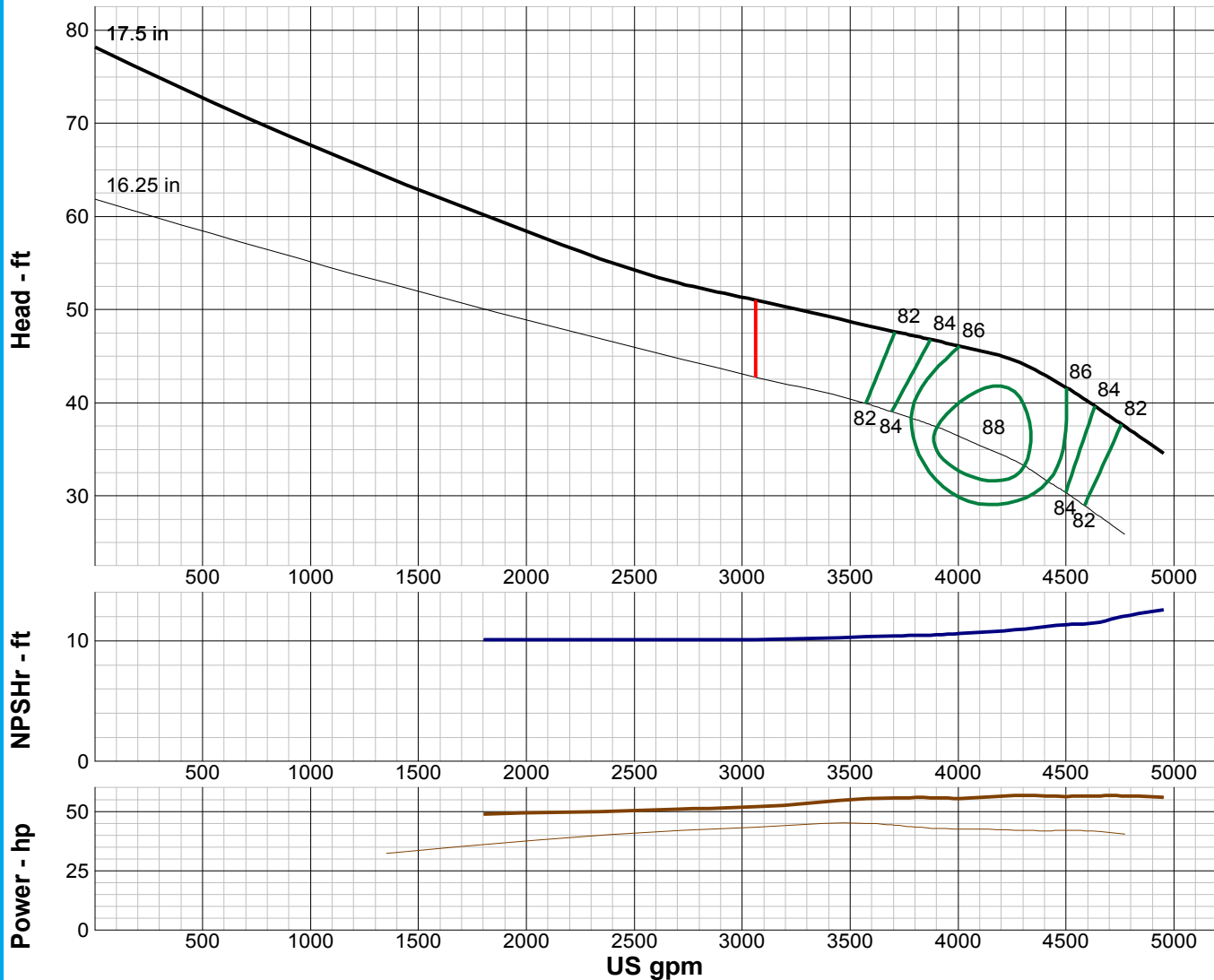
TURBINE PUMP CURVE

SINGLE STAGE PERFORMANCE

JANUARY 2010

480 SERIES

24LC 870 RPM



IMPELLER DATA		
IMPELLER NUMBER	4865	Minimum submergence above eye of bottom impeller: 32 IN.
TYPE	ENCLOSED	
THRUST FACTOR	K=41.20	
EYE AREA	93.0 SQ. IN.	
WEIGHT	82.00 LB.	

EFFICIENCY CORRECTION				
NUMBER OF BOWLS:	1	2	3	
CHANGE AS FOLLOWS:	-2	-1	0	
CHANGE IN EFFICIENCY MAY AFFECT BOTH HEAD AND HORSEPOWER.				

PUMP MATERIAL EFFICIENCY CORRECTION				
	DUCTILE	BRONZE	NI-R	STAINLESS
IMPELLER MATERIAL:	-1	0	-1	-1
BOWL MATERIAL:	-1	-2	-2	-2

FLANGED BOWL DATA	
BOWL NUMBER	5329
BOWL MAX. DIAMETER	24.000 IN.
BOWL MIN. DIAMETER	23.750 IN.
MAX. NO. STAGES	6
ONE STAGE WEIGHT	1150 LB.
ADD STAGE WEIGHT	850 LB.
STD. SHAFT DIA.	2.688 IN.
STD. LATERAL	0.938 IN.
DISCHARGE SIZE	N/A
DISCHARGE CONNECTION	FLG.
SUCTION BELL DIA.	24.750 IN.
SUCTION CONNECTION	BELL
MAX. SPHERE SIZE	2.000 IN.
MAX. OPERATIONAL P.S.I.	250 (SPECIAL)

Performance based on pumping clear, fresh water at a temperature not over 85° F., free of gas, air or abrasives and with bowls properly adjusted and submerged. Performance curve reflects Hydraulic Institute tolerances and guidelines.



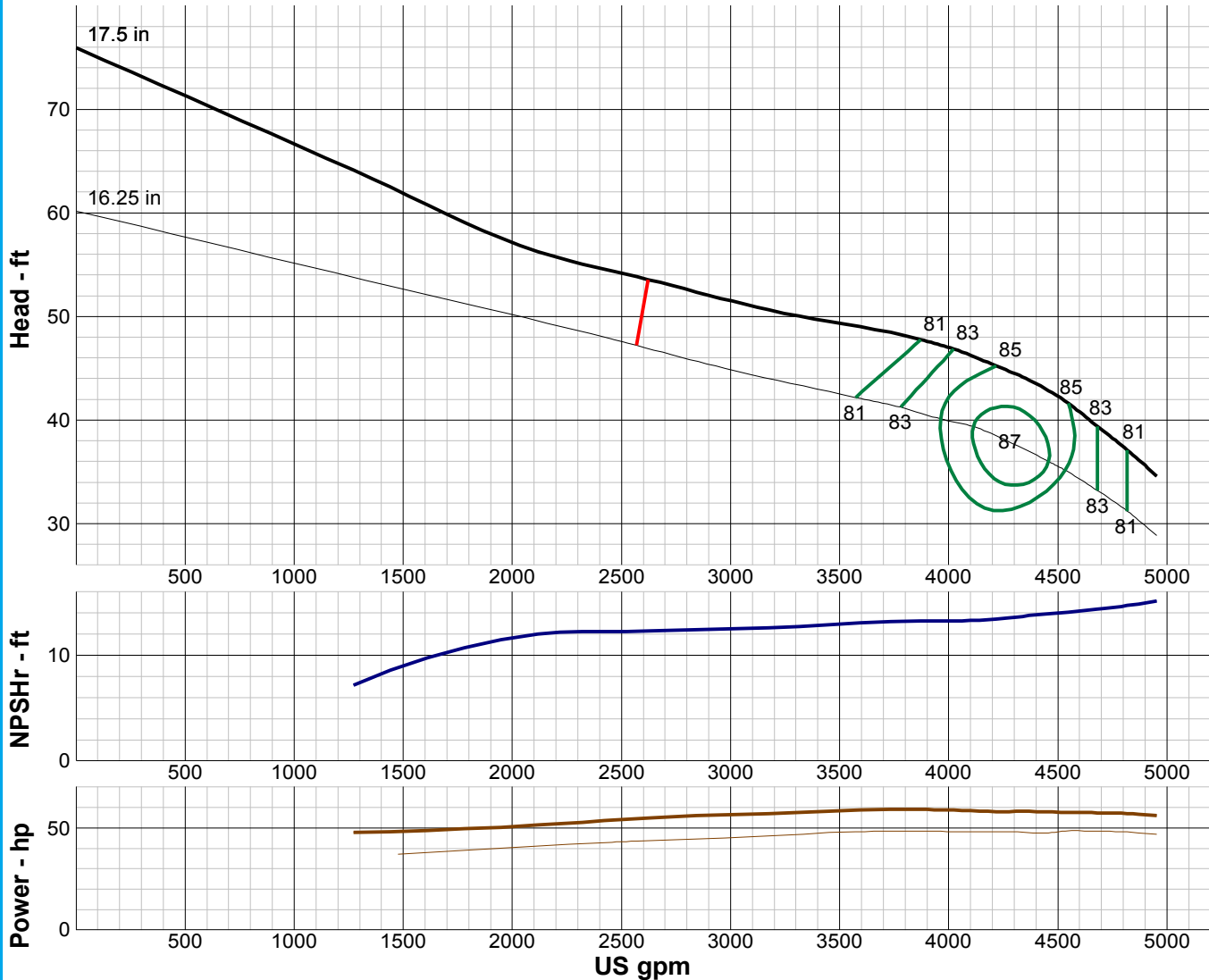
TURBINE PUMP CURVE

SINGLE STAGE PERFORMANCE

JANUARY 2010

480 SERIES

24MC 870 RPM



IMPELLER DATA		
IMPELLER NUMBER	4874	Minimum submergence above eye of bottom impeller: 32 IN.
TYPE	ENCLOSED	
THRUST FACTOR	K=41.20	
EYE AREA	93.0 SQ. IN.	
WEIGHT	82.00 LB.	

EFFICIENCY CORRECTION				
NUMBER OF BOWLS:	1	2	3	
CHANGE AS FOLLOWS:	-2	-1	0	
CHANGE IN EFFICIENCY MAY AFFECT BOTH HEAD AND HORSEPOWER.				

PUMP MATERIAL EFFICIENCY CORRECTION				
	DUCTILE	BRONZE	NI-R	STAINLESS
IMPELLER MATERIAL:	-1	0	-1	-1
BOWL MATERIAL:	-1	-2	-2	-2

FLANGED BOWL DATA	
BOWL NUMBER	5329
BOWL MAX. DIAMETER	24.000 IN.
BOWL MIN. DIAMETER	23.750 IN.
MAX. NO. STAGES	6
ONE STAGE WEIGHT	1150 LB.
ADD STAGE WEIGHT	850 LB.
STD. SHAFT DIA.	2.688 IN.
STD. LATERAL	0.938 IN.
DISCHARGE SIZE	N/A
DISCHARGE CONNECTION	FLG.
SUCTION BELL DIA.	24.750 IN.
SUCTION CONNECTION	BELL
MAX. SPHERE SIZE	2.000 IN.
MAX. OPERATIONAL P.S.I.	250 (SPECIAL)

Performance based on pumping clear, fresh water at a temperature not over 85° F., free of gas, air or abrasives and with bowls properly adjusted and submerged. Performance curve reflects Hydraulic Institute tolerances and guidelines.



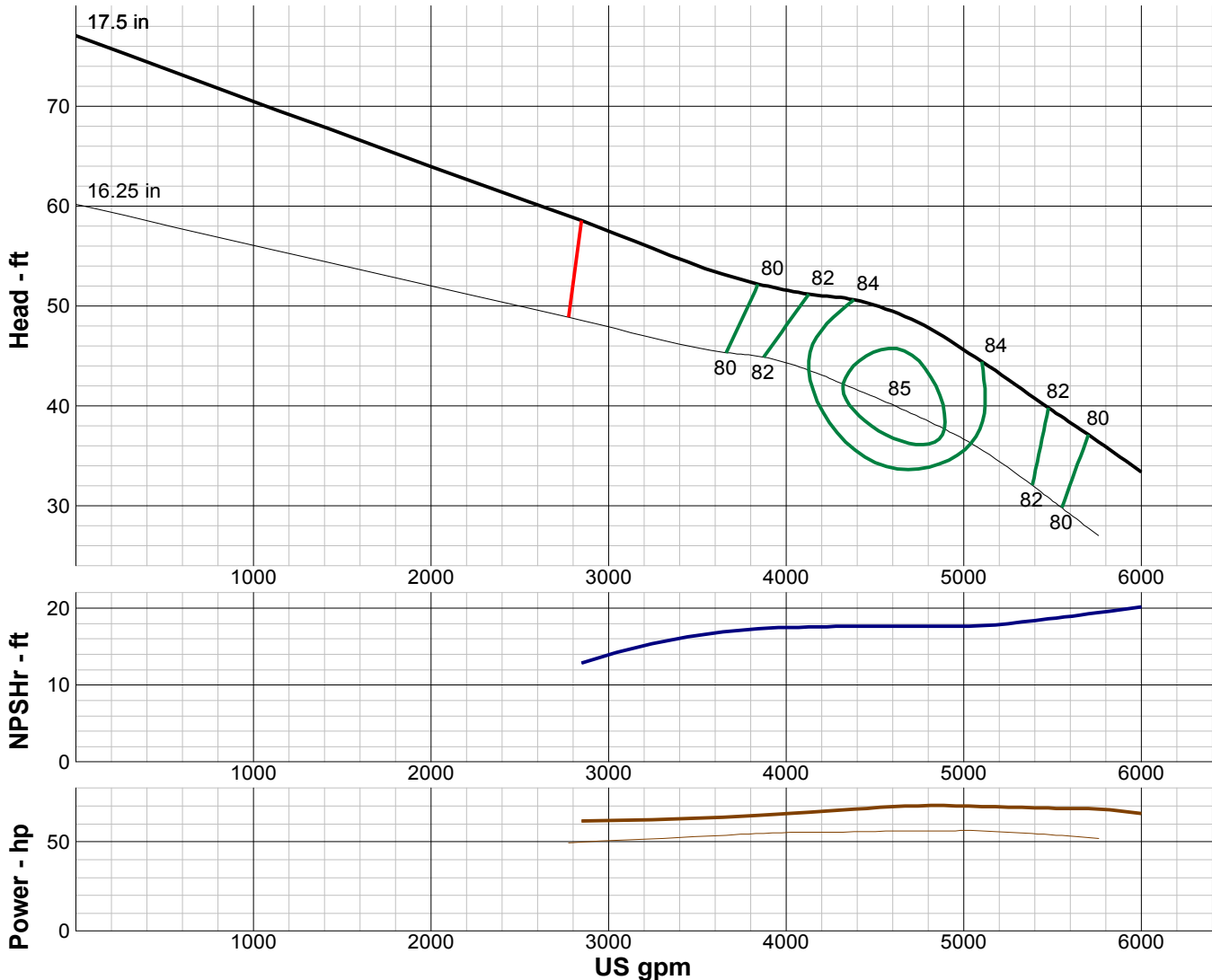
TURBINE PUMP CURVE

SINGLE STAGE PERFORMANCE

JANUARY 2010

480 SERIES

24HC 870 RPM



IMPELLER DATA

IMPELLER NUMBER	4883	Minimum submergence above eye of bottom impeller: 32 IN.
TYPE	ENCLOSED	
THRUST FACTOR	K=41.20	
EYE AREA	93.0 SQ. IN.	
WEIGHT	82.00 LB.	

EFFICIENCY CORRECTION

NUMBER OF BOWLS:	1	2	3		
CHANGE AS FOLLOWS:	-2	-1	0		
CHANGE IN EFFICIENCY MAY AFFECT BOTH HEAD AND HORSEPOWER.					

PUMP MATERIAL EFFICIENCY CORRECTION

	DUCTILE	BRONZE	NI-R	STAINLESS
IMPELLER MATERIAL:	-1	0	-1	-1
BOWL MATERIAL:	-1	-2	-2	-2

FLANGED BOWL DATA

BOWL NUMBER	5329
BOWL MAX. DIAMETER	24.000 IN.
BOWL MIN. DIAMETER	23.750 IN.
MAX. NO. STAGES	5
ONE STAGE WEIGHT	1150 LB.
ADD STAGE WEIGHT	850 LB.
STD. SHAFT DIA.	2.688 IN.
STD. LATERAL	0.938 IN.
DISCHARGE SIZE	N/A
DISCHARGE CONNECTION	FLG.
SUCTION BELL DIA.	24.750 IN.
SUCTION CONNECTION	BELL
MAX. SPHERE SIZE	2.000 IN.
MAX. OPERATIONAL P.S.I.	250 (SPECIAL)

Performance based on pumping clear, fresh water at a temperature not over 85° F., free of gas, air or abrasives and with bowls properly adjusted and submerged. Performance curve reflects Hydraulic Institute tolerances and guidelines.



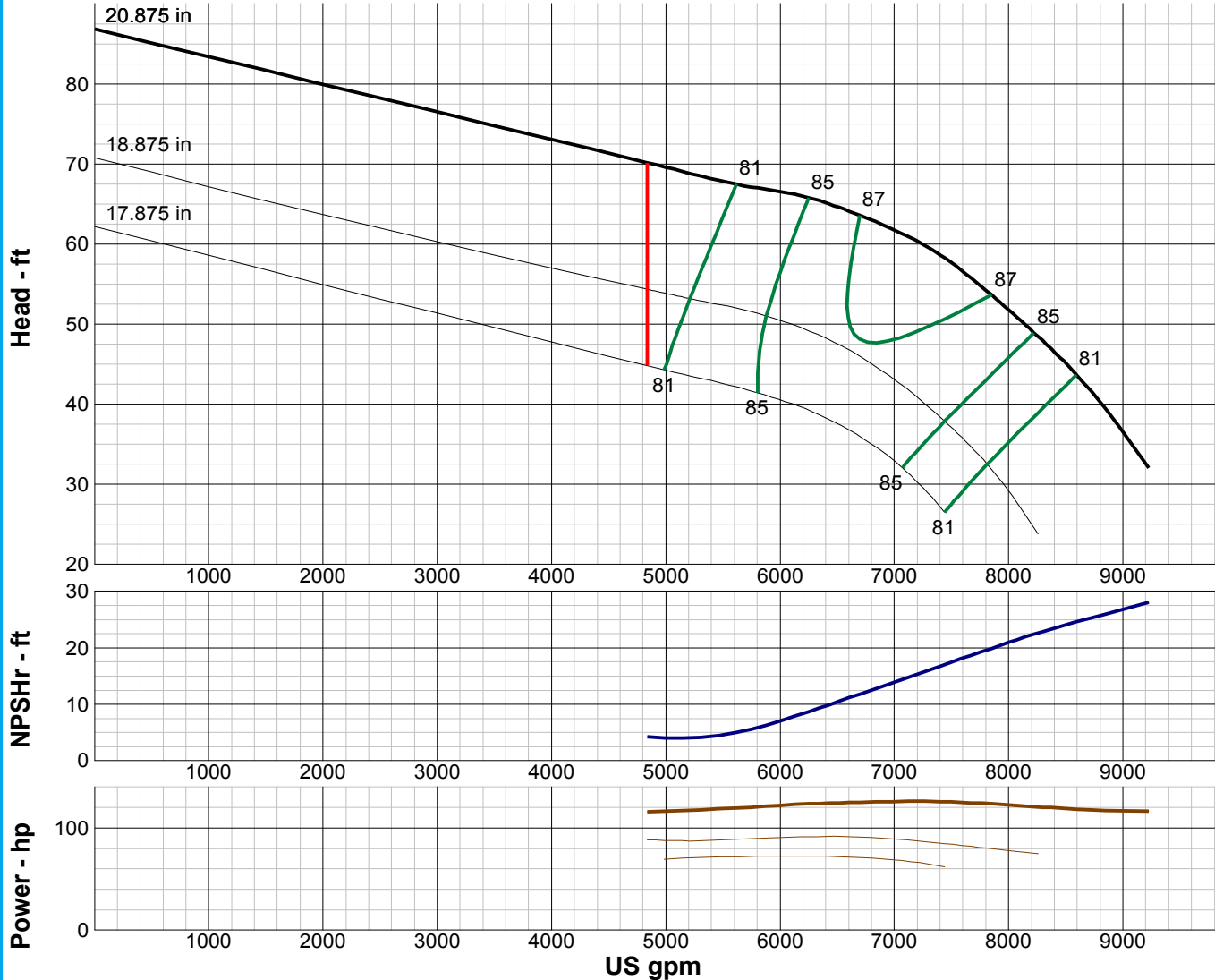
TURBINE PUMP CURVE

SINGLE STAGE PERFORMANCE

JANUARY 2010

480 SERIES

28LC 870 RPM



IMPELLER DATA		
IMPELLER NUMBER	4892	Minimum submergence above eye of bottom impeller: 56 IN.
TYPE	ENCLOSED	
THRUST FACTOR	K=61.00	
EYE AREA	133 SQ. IN.	
WEIGHT	255 LB.	

EFFICIENCY CORRECTION				
NUMBER OF BOWLS:	1	2	3	
CHANGE AS FOLLOWS:	-1	0	+1	
CHANGE IN EFFICIENCY MAY AFFECT BOTH HEAD AND HORSEPOWER.				

PUMP MATERIAL EFFICIENCY CORRECTION				
	DUCTILE	BRONZE	NI-R	STAINLESS
IMPELLER MATERIAL:	-1	0	-1	-1
BOWL MATERIAL:	-1	-1	-1	-2

FLANGED BOWL DATA	
BOWL NUMBER	5338
BOWL MAX. DIAMETER	27.000 IN.
BOWL MIN. DIAMETER	27.000 IN.
MAX. NO. STAGES	3
ONE STAGE WEIGHT	2300 LB.
ADD STAGE WEIGHT	920 LB.
STD. SHAFT DIA.	2.688 IN.
STD. LATERAL	0.875 IN.
DISCHARGE SIZE	N/A
DISCHARGE CONNECTION	FLG.
SUCTION BELL DIA.	30.750 IN.
SUCTION CONNECTION	BELL
MAX. SPHERE SIZE	1.750 IN.
MAX. OPERATIONAL P.S.I.	250 (SPECIAL)

Performance based on pumping clear, fresh water at a temperature not over 85° F., free of gas, air or abrasives and with bowls properly adjusted and submerged. Performance curve reflects Hydraulic Institute tolerances and guidelines.



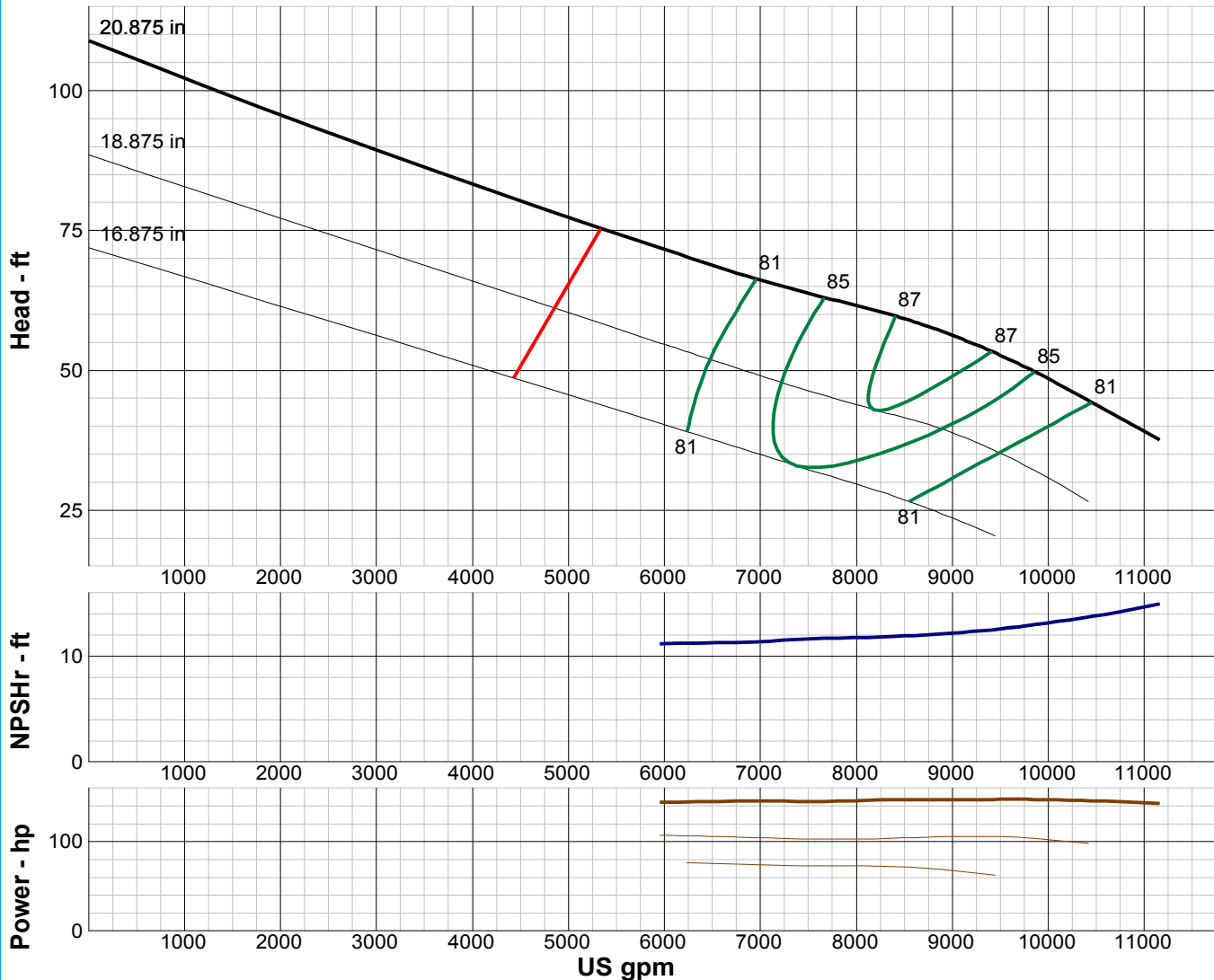
TURBINE PUMP CURVE

SINGLE STAGE PERFORMANCE

JANUARY 2010

480 SERIES

28MC 870 RPM



IMPELLER DATA		
IMPELLER NUMBER	4901	Minimum submergence above eye of bottom impeller: 60 IN.
TYPE	ENCLOSED	
THRUST FACTOR	K=61.00	
EYE AREA	133 SQ. IN.	
WEIGHT	255 LB.	

EFFICIENCY CORRECTION				
NUMBER OF BOWLS:	1	2	3	
CHANGE AS FOLLOWS:	-1	0	+1	
CHANGE IN EFFICIENCY MAY AFFECT BOTH HEAD AND HORSEPOWER.				

PUMP MATERIAL EFFICIENCY CORRECTION				
	DUCTILE	BRONZE	NI-R	STAINLESS
IMPELLER MATERIAL:	-1	0	-1	-1
BOWL MATERIAL:	-1	-1	-1	-2

FLANGED BOWL DATA	
BOWL NUMBER	5338
BOWL MAX. DIAMETER	27.000 IN.
BOWL MIN. DIAMETER	27.000 IN.
MAX. NO. STAGES	2
ONE STAGE WEIGHT	2300 LB.
ADD STAGE WEIGHT	920 LB.
STD. SHAFT DIA.	2.688 IN.
STD. LATERAL	0.875 IN.
DISCHARGE SIZE	N/A
DISCHARGE CONNECTION	FLG.
SUCTION BELL DIA.	30.750 IN.
SUCTION CONNECTION	BELL
MAX. SPHERE SIZE	1.750 IN.
MAX. OPERATIONAL P.S.I.	250 (SPECIAL)

Performance based on pumping clear, fresh water at a temperature not over 85° F., free of gas, air or abrasives and with bowls properly adjusted and submerged. Performance curve reflects Hydraulic Institute tolerances and guidelines.



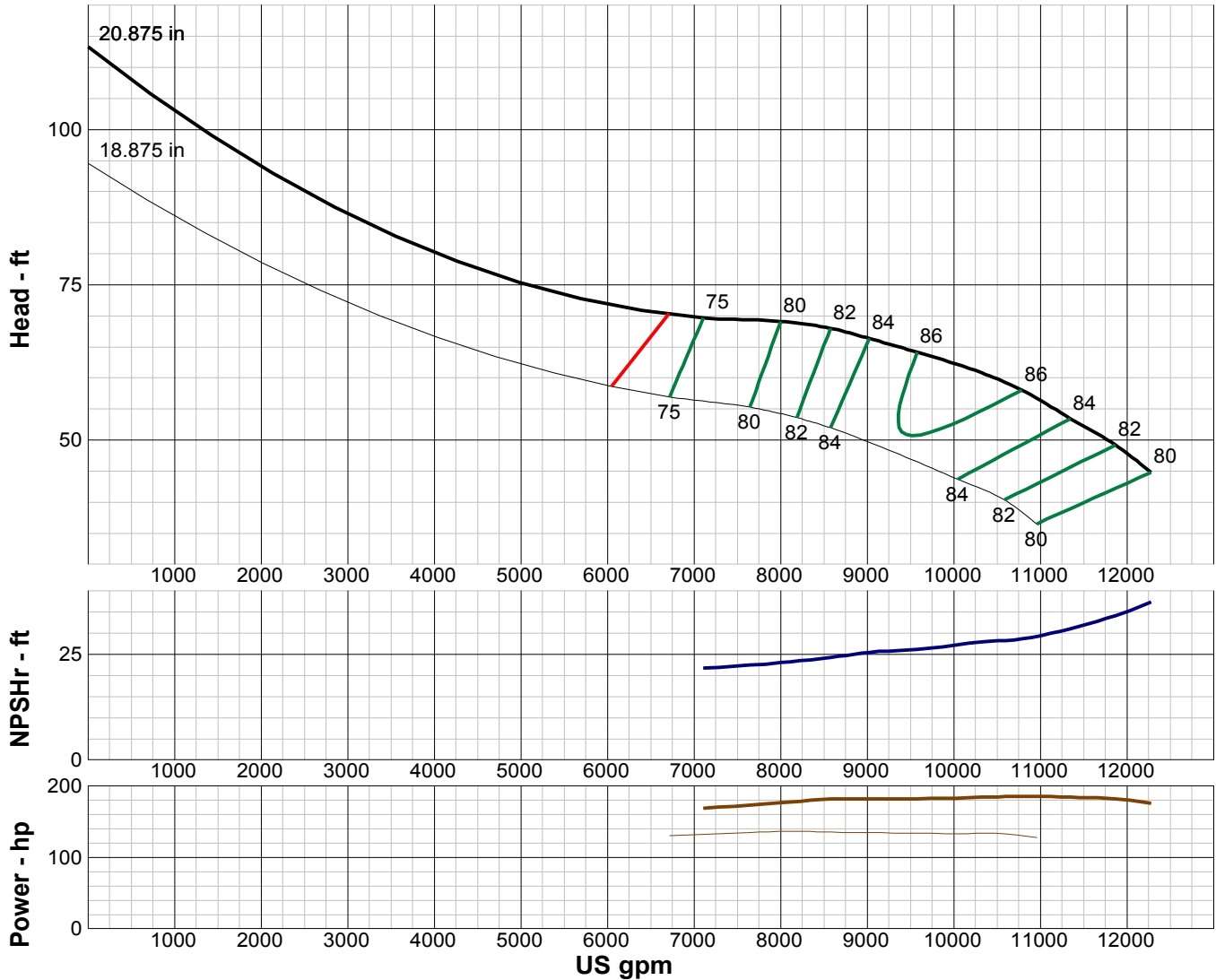
TURBINE PUMP CURVE

SINGLE STAGE PERFORMANCE

JANUARY 2010

480 SERIES

28HC 870 RPM



IMPELLER DATA		
IMPELLER NUMBER	0104	Minimum submergence above eye of bottom impeller: 62 IN.
TYPE	ENCLOSED	
THRUST FACTOR	K=61.00	
EYE AREA	133 SQ. IN.	
WEIGHT	255 LB.	

FLANGED BOWL DATA	
BOWL NUMBER	5338
BOWL MAX. DIAMETER	27.000 IN.
BOWL MIN. DIAMETER	27.000 IN.
MAX. NO. STAGES	2
ONE STAGE WEIGHT	2300 LB.
ADD STAGE WEIGHT	920 LB.
STD. SHAFT DIA.	2.688 IN.
STD. LATERAL	0.875 IN.
DISCHARGE SIZE	N/A
DISCHARGE CONNECTION	FLG.
SUCTION BELL DIA.	30.750 IN.
SUCTION CONNECTION	BELL
MAX. SPHERE SIZE	1.750 IN.
MAX. OPERATIONAL P.S.I.	250 (SPECIAL)

EFFICIENCY CORRECTION				
NUMBER OF BOWLS:	1	2	3	
CHANGE AS FOLLOWS:	-1	0	+1	
CHANGE IN EFFICIENCY MAY AFFECT BOTH HEAD AND HORSEPOWER.				

PUMP MATERIAL EFFICIENCY CORRECTION				
	DUCTILE	BRONZE	NI-R	STAINLESS
IMPELLER MATERIAL:	-1	0	-1	-1
BOWL MATERIAL:	-1	-1	-1	-2

Performance based on pumping clear, fresh water at a temperature not over 85° F., free of gas, air or abrasives and with bowls properly adjusted and submerged. Performance curve reflects Hydraulic Institute tolerances and guidelines.



TURBINE PUMP CURVE

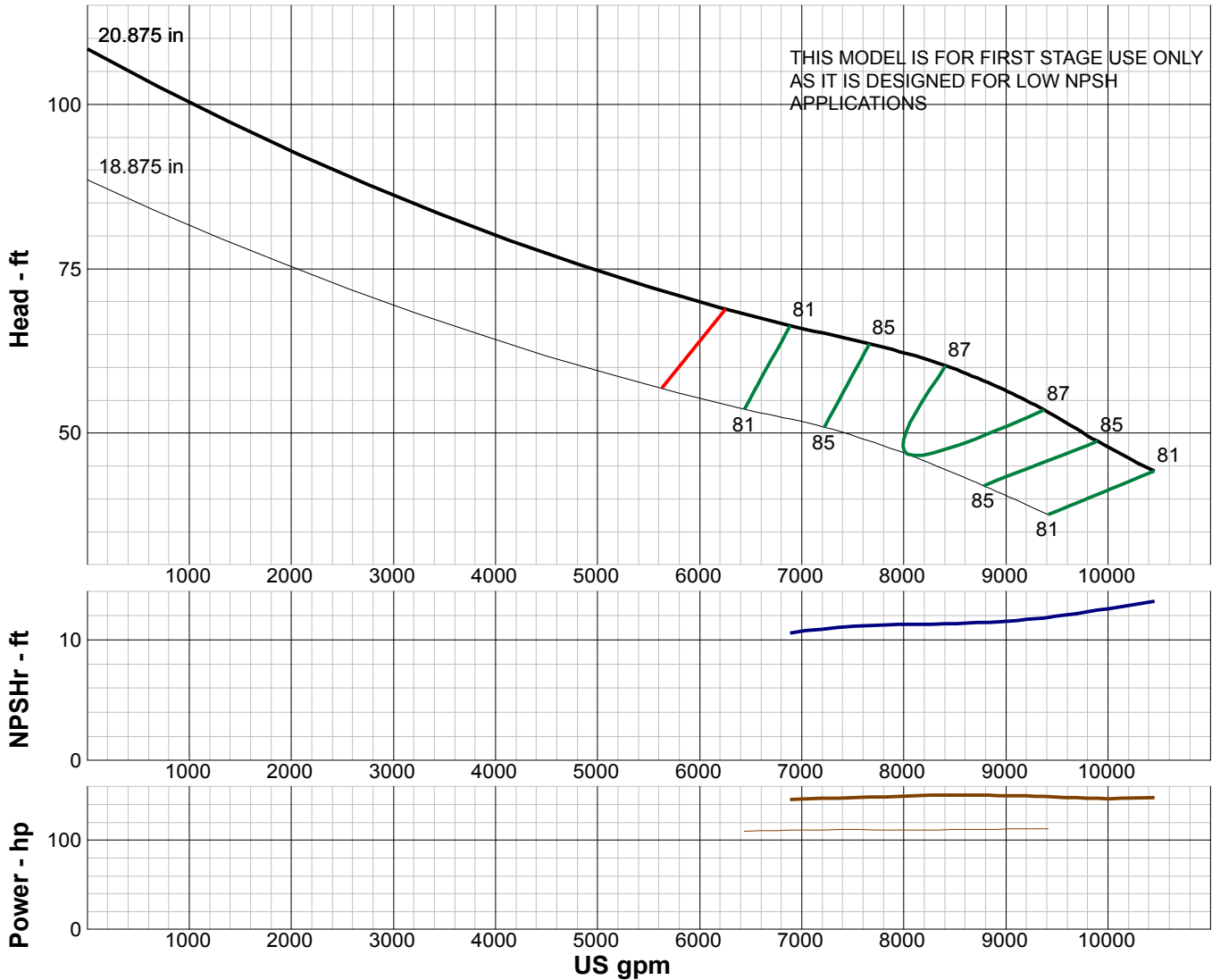
SINGLE STAGE PERFORMANCE

JANUARY 2010

480 SERIES

28SC 870 RPM

THIS MODEL IS FOR FIRST STAGE USE ONLY
AS IT IS DESIGNED FOR LOW NPSH
APPLICATIONS



IMPELLER DATA

IMPELLER NUMBER	4901	Minimum submergence above eye of bottom impeller: 60 IN.
TYPE	ENCLOSED	
THRUST FACTOR	K=59.00	
EYE AREA	140 SQ. IN.	
WEIGHT	255 LB.	

EFFICIENCY CORRECTION

NUMBER OF BOWLS:	1	2			
CHANGE AS FOLLOWS:	-2	0			
CHANGE IN EFFICIENCY MAY AFFECT BOTH HEAD AND HORSEPOWER.					

PUMP MATERIAL EFFICIENCY CORRECTION

	DUCTILE	BRONZE	NI-R	STAINLESS
IMPELLER MATERIAL:	-1	0	-1	-1
BOWL MATERIAL:	-1	-1	-1	-2

FLANGED BOWL DATA

BOWL NUMBER	5338
BOWL MAX. DIAMETER	27.000 IN.
BOWL MIN. DIAMETER	27.000 IN.
MAX. NO. STAGES	1
ONE STAGE WEIGHT	2300 LB.
ADD STAGE WEIGHT	920 LB.
STD. SHAFT DIA.	2.688 IN.
STD. LATERAL	0.875 IN.
DISCHARGE SIZE	N/A
DISCHARGE CONNECTION	FLG.
SUCTION BELL DIA.	30.750 IN.
SUCTION CONNECTION	BELL
MAX. SPHERE SIZE	1.750 IN.
MAX. OPERATIONAL P.S.I.	250 (SPECIAL)

Performance based on pumping clear, fresh water at a temperature not over 85° F., free of gas, air or abrasives and with bowls properly adjusted and submerged. Performance curve reflects Hydraulic Institute tolerances and guidelines.



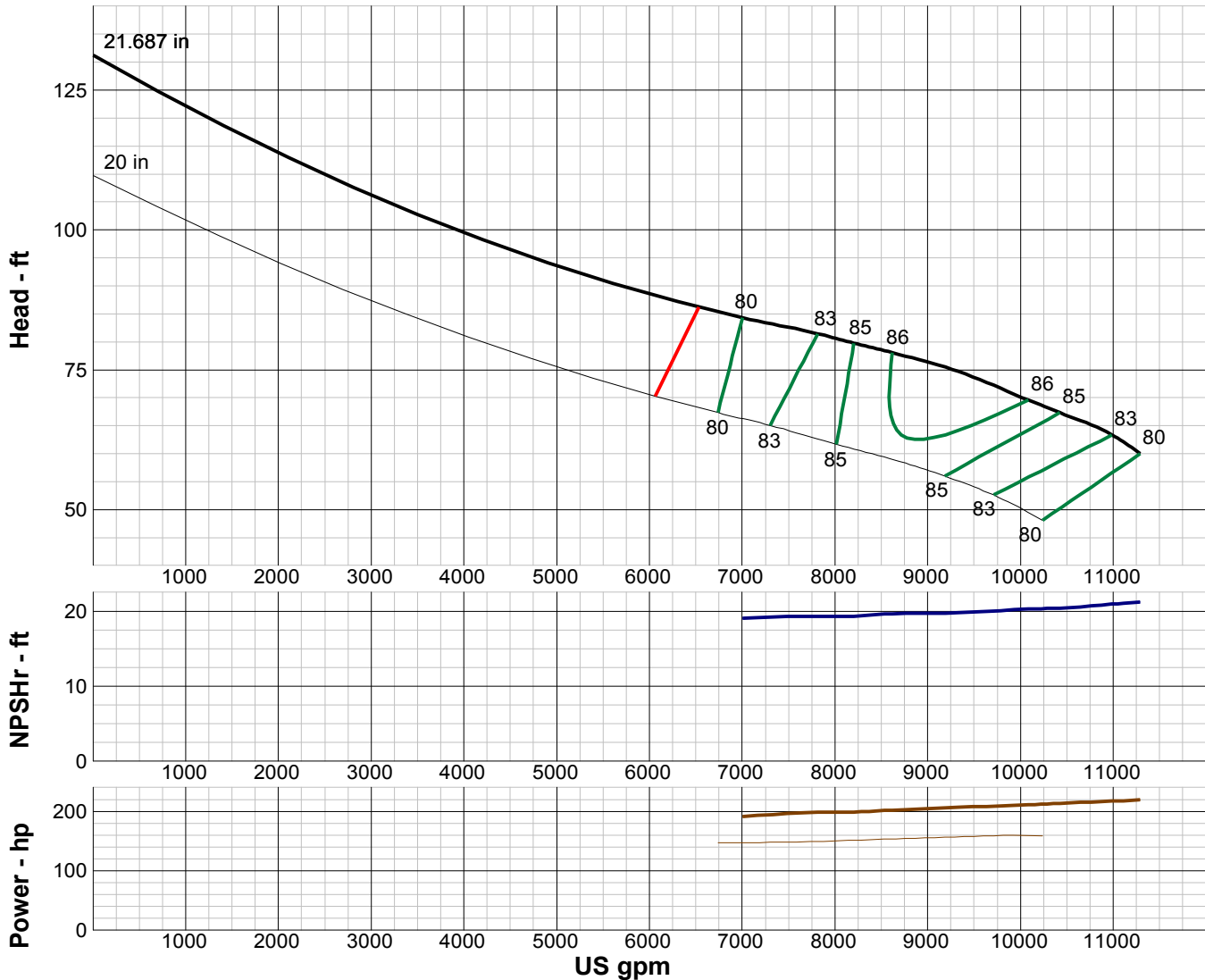
TURBINE PUMP CURVE

SINGLE STAGE PERFORMANCE

JANUARY 2010

480 SERIES

30LC 870 RPM



IMPELLER DATA

IMPELLER NUMBER	0192	Minimum submergence above eye of bottom impeller: 60 IN.
TYPE	ENCLOSED	
THRUST FACTOR	K=67.50	
EYE AREA	175 SQ. IN.	
WEIGHT	440 LB.	

EFFICIENCY CORRECTION

NUMBER OF BOWLS:	1	2	3		
CHANGE AS FOLLOWS:	-2	0	+1		
CHANGE IN EFFICIENCY MAY AFFECT BOTH HEAD AND HORSEPOWER.					

PUMP MATERIAL EFFICIENCY CORRECTION

	DUCTILE	BRONZE	NI-R	STAINLESS
IMPELLER MATERIAL:	-1	0	-1	-1
BOWL MATERIAL:	-1	-1	-1	-2

FLANGED BOWL DATA

BOWL NUMBER	0235
BOWL MAX. DIAMETER	30.000 IN.
BOWL MIN. DIAMETER	30.000 IN.
MAX. NO. STAGES	5
ONE STAGE WEIGHT	4500 LB.
ADD STAGE WEIGHT	2000 LB.
STD. SHAFT DIA.	3.250 IN.
STD. LATERAL	1.375 IN.
DISCHARGE SIZE	N/A
DISCHARGE CONNECTION	FLG.
SUCTION BELL DIA.	33.250 IN.
SUCTION CONNECTION	BELL
MAX. SPHERE SIZE	2.500 IN.
MAX. OPERATIONAL P.S.I.	250 (SPECIAL)

Performance based on pumping clear, fresh water at a temperature not over 85° F., free of gas, air or abrasives and with bowls properly adjusted and submerged. Performance curve reflects Hydraulic Institute tolerances and guidelines.



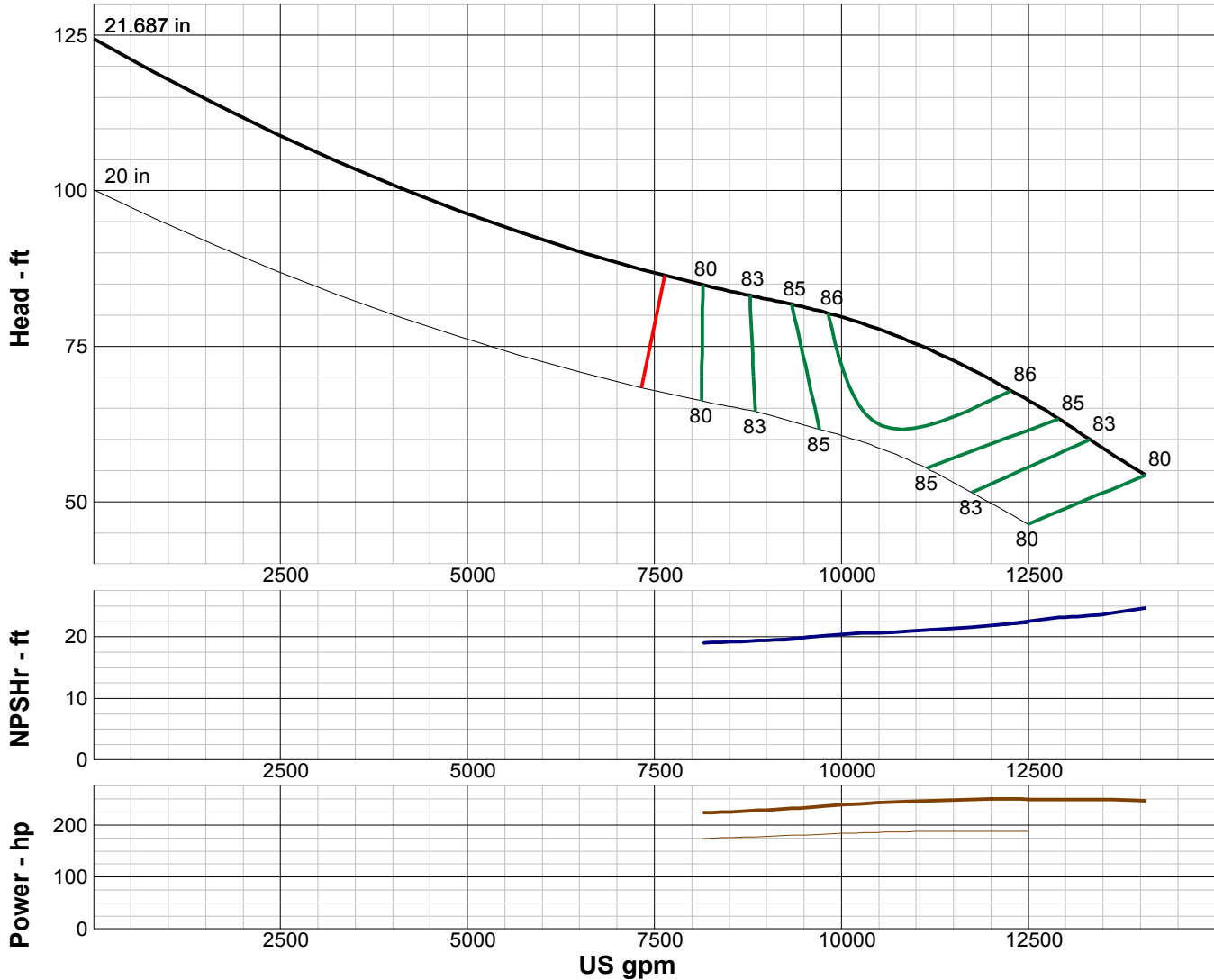
TURBINE PUMP CURVE

SINGLE STAGE PERFORMANCE

JANUARY 2010

480 SERIES

30MC 870 RPM



IMPELLER DATA		
IMPELLER NUMBER	0193	Minimum submergence above eye of bottom impeller: 50 IN.
TYPE	ENCLOSED	
THRUST FACTOR	K=67.50	
EYE AREA	175 SQ. IN.	
WEIGHT	440 LB.	

EFFICIENCY CORRECTION				
NUMBER OF BOWLS:	1	2		
CHANGE AS FOLLOWS:	-2	0		
CHANGE IN EFFICIENCY MAY AFFECT BOTH HEAD AND HORSEPOWER.				

PUMP MATERIAL EFFICIENCY CORRECTION				
	DUCTILE	BRONZE	NI-R	STAINLESS
IMPELLER MATERIAL:	-1	0	-1	-1
BOWL MATERIAL:	-1	-1	-1	-2

FLANGED BOWL DATA	
BOWL NUMBER	0235
BOWL MAX. DIAMETER	30.000 IN.
BOWL MIN. DIAMETER	30.000 IN.
MAX. NO. STAGES	5
ONE STAGE WEIGHT	4500 LB.
ADD STAGE WEIGHT	2000 LB.
STD. SHAFT DIA.	3.250 IN.
STD. LATERAL	1.375 IN.
DISCHARGE SIZE	N/A
DISCHARGE CONNECTION	BELL
SUCTION BELL DIA.	33.250 IN.
SUCTION CONNECTION	BELL
MAX. SPHERE SIZE	2.500 IN.
MAX. OPERATIONAL P.S.I.	250 (SPECIAL)

Performance based on pumping clear, fresh water at a temperature not over 85° F., free of gas, air or abrasives and with bowls properly adjusted and submerged. Performance curve reflects Hydraulic Institute tolerances and guidelines.



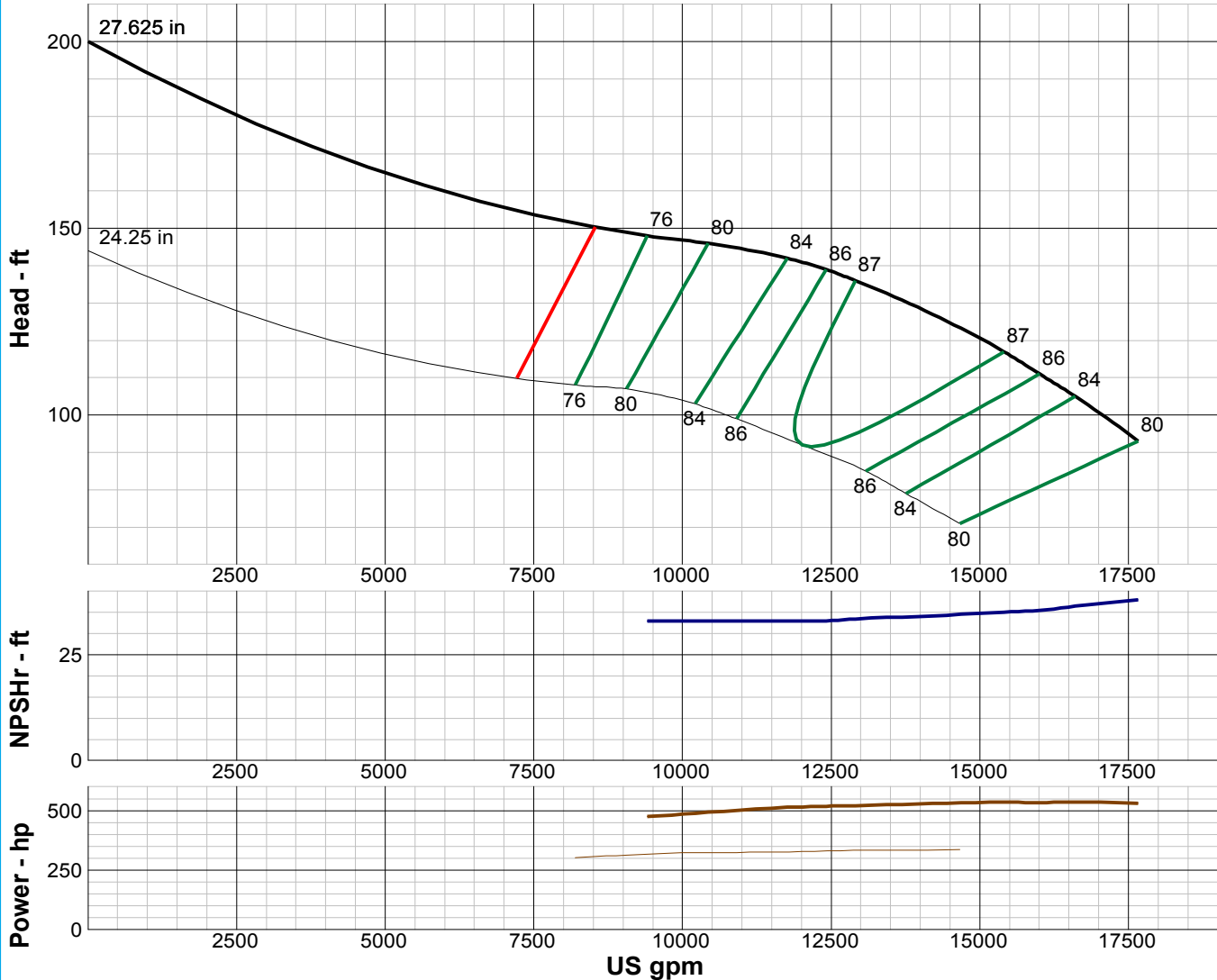
TURBINE PUMP CURVE

SINGLE STAGE PERFORMANCE

JANUARY 2010

480 SERIES

36LC 870 RPM



IMPELLER DATA

IMPELLER NUMBER	1927	Minimum submergence above eye of bottom impeller: 65 IN.
TYPE	ENCLOSED	
THRUST FACTOR	K=94.50	
EYE AREA	215 SQ. IN.	
WEIGHT	440 LB.	

EFFICIENCY CORRECTION

NUMBER OF BOWLS:	1	2	3		
CHANGE AS FOLLOWS:	-2	-1	0		
CHANGE IN EFFICIENCY MAY AFFECT BOTH HEAD AND HORSEPOWER.					

PUMP MATERIAL EFFICIENCY CORRECTION

	DUCTILE	BRONZE	NI-R	STAINLESS
IMPELLER MATERIAL:	-1	0	-1	-1
BOWL MATERIAL:	-1	-1	-1	-2

FLANGED BOWL DATA

BOWL NUMBER	1909
BOWL MAX. DIAMETER	36.000 IN.
BOWL MIN. DIAMETER	36.000 IN.
MAX. NO. STAGES	2
ONE STAGE WEIGHT	4500 LB.
ADD STAGE WEIGHT	2000 LB.
STD. SHAFT DIA.	3.250 IN.
STD. LATERAL	1.250 IN.
DISCHARGE SIZE	N/A
DISCHARGE CONNECTION	FLG.
SUCTION BELL DIA.	42.000 IN.
SUCTION CONNECTION	BELL
MAX. SPHERE SIZE	2.500 IN.
MAX. OPERATIONAL P.S.I.	200 (SPECIAL)

Performance based on pumping clear, fresh water at a temperature not over 85° F., free of gas, air or abrasives and with bowls properly adjusted and submerged. Performance curve reflects Hydraulic Institute tolerances and guidelines.



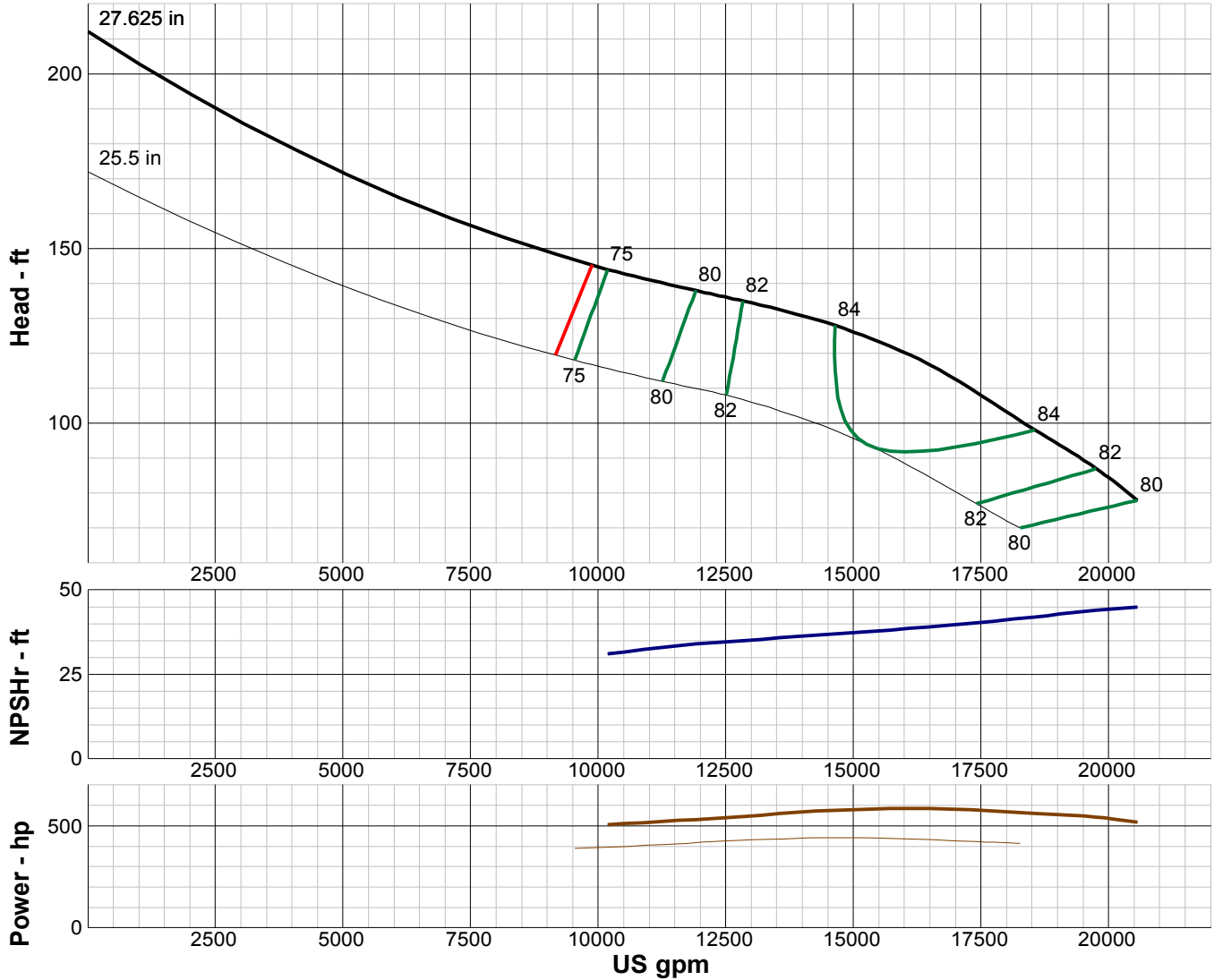
TURBINE PUMP CURVE

SINGLE STAGE PERFORMANCE

JANUARY 2010

480 SERIES

36MC 870 RPM



IMPELLER DATA		
IMPELLER NUMBER	1936	Minimum submergence above eye of bottom impeller: 65 IN.
TYPE	ENCLOSED	
THRUST FACTOR	K=94.50	
EYE AREA	215 SQ. IN.	
WEIGHT	440 LB.	

EFFICIENCY CORRECTION				
NUMBER OF BOWLS:	1	2	3	
CHANGE AS FOLLOWS:	-2	-1	0	
CHANGE IN EFFICIENCY MAY AFFECT BOTH HEAD AND HORSEPOWER.				

PUMP MATERIAL EFFICIENCY CORRECTION				
	DUCTILE	BRONZE	NI-R	STAINLESS
IMPELLER MATERIAL:	-1	0	-1	-1
BOWL MATERIAL:	-1	-1	-1	-2

FLANGED BOWL DATA	
BOWL NUMBER	1909
BOWL MAX. DIAMETER	36.000 IN.
BOWL MIN. DIAMETER	36.000 IN.
MAX. NO. STAGES	2
ONE STAGE WEIGHT	4500 LB.
ADD STAGE WEIGHT	2000 LB.
STD. SHAFT DIA.	3.250 IN.
STD. LATERAL	1.250 IN.
DISCHARGE SIZE	N/A
DISCHARGE CONNECTION	FLG.
SUCTION BELL DIA.	42.000 IN.
SUCTION CONNECTION	BELL
MAX. SPHERE SIZE	2.500 IN.
MAX. OPERATIONAL P.S.I.	200 (SPECIAL)

Performance based on pumping clear, fresh water at a temperature not over 85° F., free of gas, air or abrasives and with bowls properly adjusted and submerged. Performance curve reflects Hydraulic Institute tolerances and guidelines.



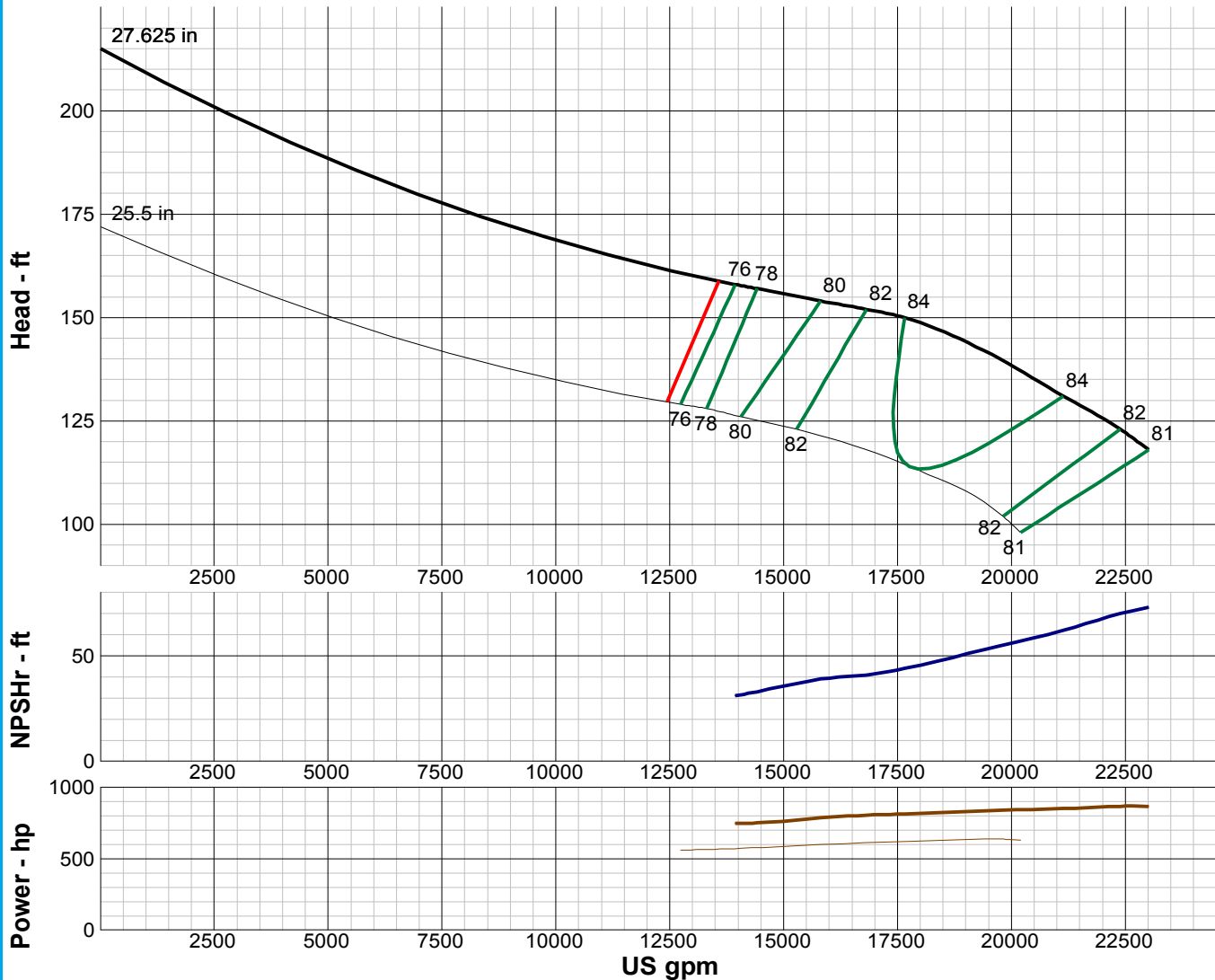
TURBINE PUMP CURVE

SINGLE STAGE PERFORMANCE

JANUARY 2010

480 SERIES

36HC 870 RPM



IMPELLER DATA

IMPELLER NUMBER	1945	Minimum submergence above eye of bottom impeller: 65 IN.
TYPE	ENCLOSED	
THRUST FACTOR	K=94.50	
EYE AREA	215 SQ. IN.	
WEIGHT	440 LB.	

FLANGED BOWL DATA

BOWL NUMBER	1909
BOWL MAX. DIAMETER	36.000 IN.
BOWL MIN. DIAMETER	36.000 IN.
MAX. NO. STAGES	2
ONE STAGE WEIGHT	4500 LB.
ADD STAGE WEIGHT	2000 LB.
STD. SHAFT DIA.	3.250 IN.
STD. LATERAL	1.250 IN.
DISCHARGE SIZE	N/A
DISCHARGE CONNECTION	FLG.
SUCTION BELL DIA.	42.000 IN.
SUCTION CONNECTION	BELL
MAX. SPHERE SIZE	2.500 IN.
MAX. OPERATIONAL P.S.I.	200 (SPECIAL)

EFFICIENCY CORRECTION

NUMBER OF BOWLS:	1	2	3		
CHANGE AS FOLLOWS:	-2	-1	0		

CHANGE IN EFFICIENCY MAY AFFECT BOTH HEAD AND HORSEPOWER.

PUMP MATERIAL EFFICIENCY CORRECTION

	DUCTILE	BRONZE	NI-R	STAINLESS
IMPELLER MATERIAL:	-1	0	-1	-1
BOWL MATERIAL:	-1	-1	-1	-2

Performance based on pumping clear, fresh water at a temperature not over 85° F., free of gas, air or abrasives and with bowls properly adjusted and submerged. Performance curve reflects Hydraulic Institute tolerances and guidelines.